

Trim	Venue Deck	D' to PL	Description	
N/A		30'0"	US BLACK MASKING (FLAT)	
		0'-0"	24'7"	US SCREEN
		19'-0"	22'0"	#3 TRUSS - US MOTORS
		23'-6"	18'0"	#3 BULBS
		26'-0"	16'6"	US LANTERNS
		21'-0"	12'6"	#2 TRUSS
NA		11'6"	#3 BLACK BORDER (FLAT)	
		23'-2"	9'0"	#2 BULBS
		26'-0"	7'6"	DS LANTERNS
		22'-0"	5'0"	#1 TRUSS
N/A		3'6"	#2 BLACK BORDER (FLAT)	
		21'-9"	2'0"	#1 BULBS
		23'-0"	6"	#1 BLACK LEG (FLAT)
N/A		0"	#1 BLACK BORDER (FLAT)	
		22'-6"	-5'0"	FOH TRUSS

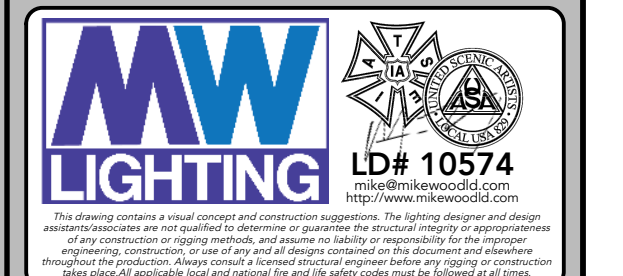
KEY TO INSTRUMENTATION

	Ayrton Eurus	50
	Mac Aura XB	33
	Mac Quantum Wash	4
	26° Lustr III	4
	36° Lustr III	24
	GLP JDC1	2
	Rosco DMG Dash	4
	Asteria NYX	7
	Look TinyCX Fogger	2
	Misc. Practical	Varies
	Generic RGB Par	Varies
	Elation KL CYC L	11
	Colorforce II 72	8

LEGEND

ABBREVIATIONS: R = Rosco, G = GAM, A = Apollo, LS = Line Set, GP = Ground Plan, LX = Electric, TD = Tech. Direct, LD = Lighting Design

FOCUS COLOR, LENS, TEMPLATE, UNIT #, ENGINE TYPE, CHANNEL #



REVISION HISTORY

NO.	REVISION	DATE	BY
001	ISSUE	05/21/2025	ASAP
002	REVISED	05/21/2025	ASAP
003	REVISED	05/21/2025	ASAP
004	REVISED	05/21/2025	ASAP
005	REVISED	05/21/2025	ASAP

DUNGEONS & DRAGONS THE TWENTY SIDED TAVERN

PRODUCTION STAFF

DIRECTOR: MICHAEL FELL
 LIGHTING DESIGNER: MIKE WOOD
 SCENIC DESIGNER: KC MCGEORGE
 ASSOCIATE LD: ABBY MAY
 PROGRAMMER: HENRY WILEN
 PRODUCTION ELEC: OLIVIA DONIPHAN
 MANAGEMENT: TINC

FIRST NATIONAL TOUR
2025-2026

SCALE: 1/2" = 1'

PG SIZE: ARCH D

DWG NUMBER: **L01**

OF 8

LIGHT PLOT - OVERHEAD OVERSTAGE HANG

A B C D E F G H I J

0

1

2

3

4

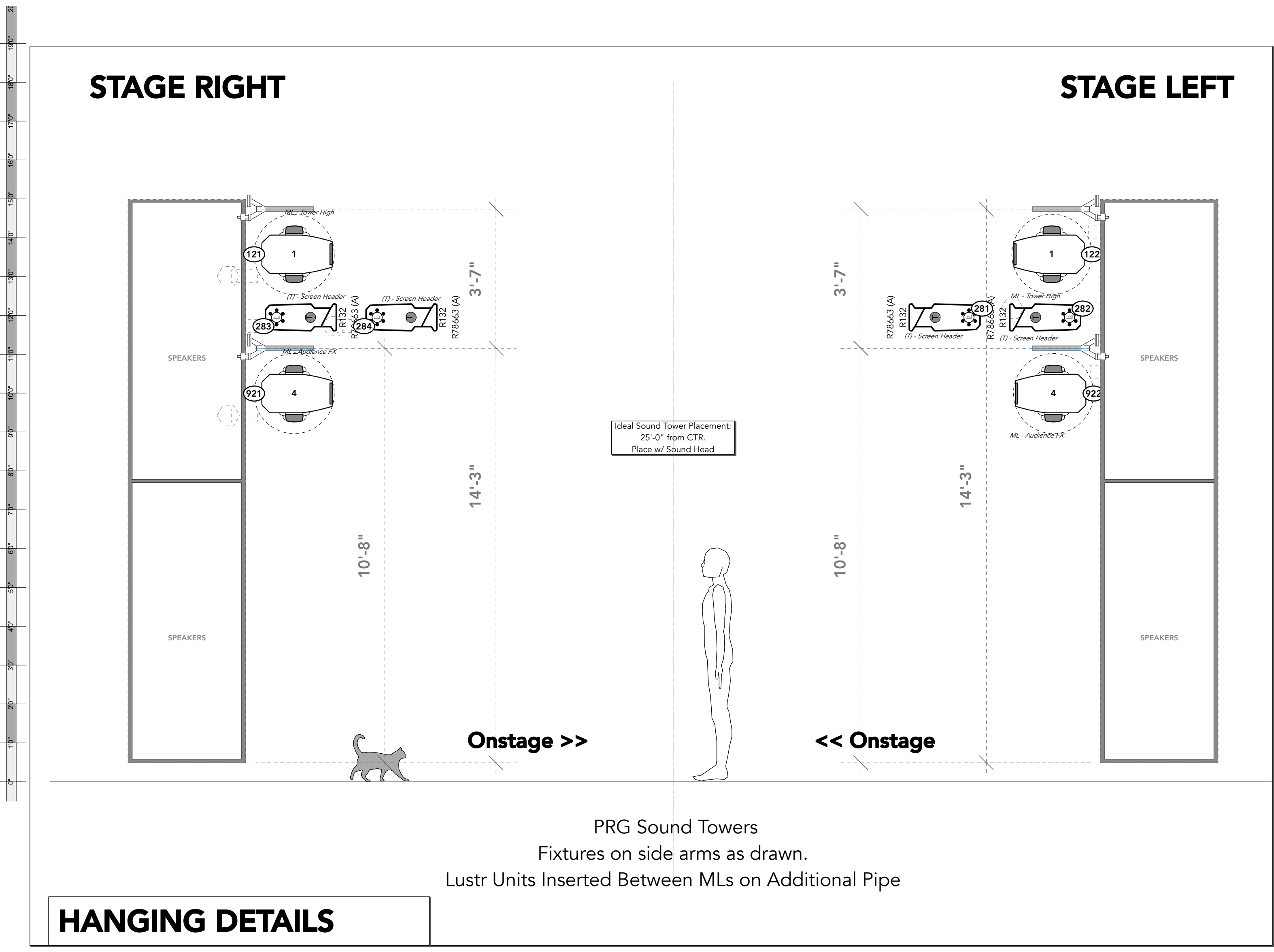
5

6

7

STAGE RIGHT

STAGE LEFT



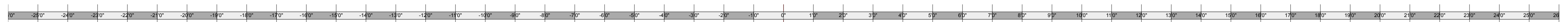
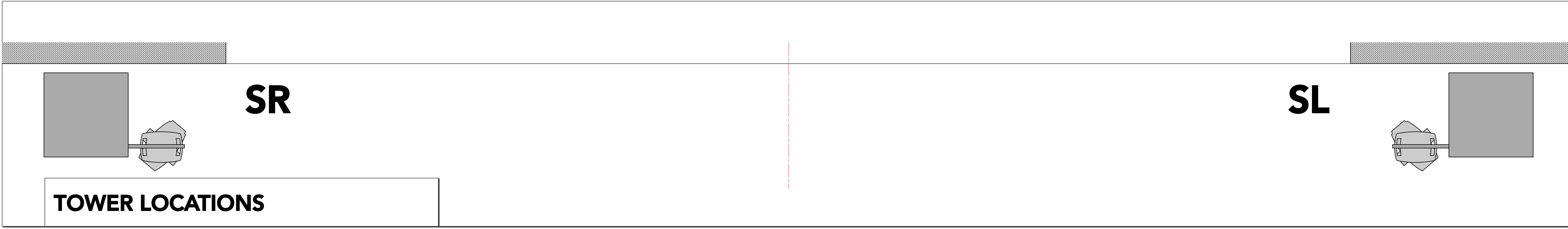
HANGING DETAILS

PRG Sound Towers
Fixtures on side arms as drawn.
Lustr Units Inserted Between MLs on Additional Pipe

SR

SL

TOWER LOCATIONS



A B C D E F G H I J

KEY TO INSTRUMENTATION

	Ayrton Eurus	50
	Mac Aura XB	33
	Mac Quantum Wash	4
	26° Lustr III	4
	36° Lustr III	24
	GLP JDC1	2
	Rosco DMG Dash	4
	Asteria NYX	7
	Look TinyCX Fogger	2
	Misc. Practical	Varies
	Generic RGB Par	Varies
	Elation KL CYC L	11
	Colorforce II 72	8

LEGEND

ABBREVIATIONS: R = Rosco, G = GAM, A = Apollo, GP = Ground Plan, LX = Electric, TD = Tech. Direct, LD = Lighting Design

FOCUS, CLIP, LENS, TEMPLATE, UNIT #, ENGINE TYPE, CHANNEL #



MW LIGHTING LD# 10574
michael@mwlighting.com
www.mwlighting.com

REVISION HISTORY

NO.	REVISION	DATE	BY
001	ISSUE	04/26	AMW
002	REVISED	05/02	AMW
003	FOR REVISION	05/15	AMW
004	ISSUE FOR	05/20	AMW
005	REVISED	05/20	AMW

DUNGEONS & DRAGONS THE TWENTY SIDED TAVERN

PRODUCTION STAFF

DIRECTOR:	MICHAEL FELL
LIGHTING DESIGNER:	MIKE WOOD
SCENIC DESIGNER:	KC MCCOY
ASSOCIATE LD:	ABBY MAY
PROGRAMMER:	HENRY WILEN
PRODUCTION ELEC. MANAGEMENT:	OLIVIA DONIPHAN

FIRST NATIONAL TOUR 2025-2026

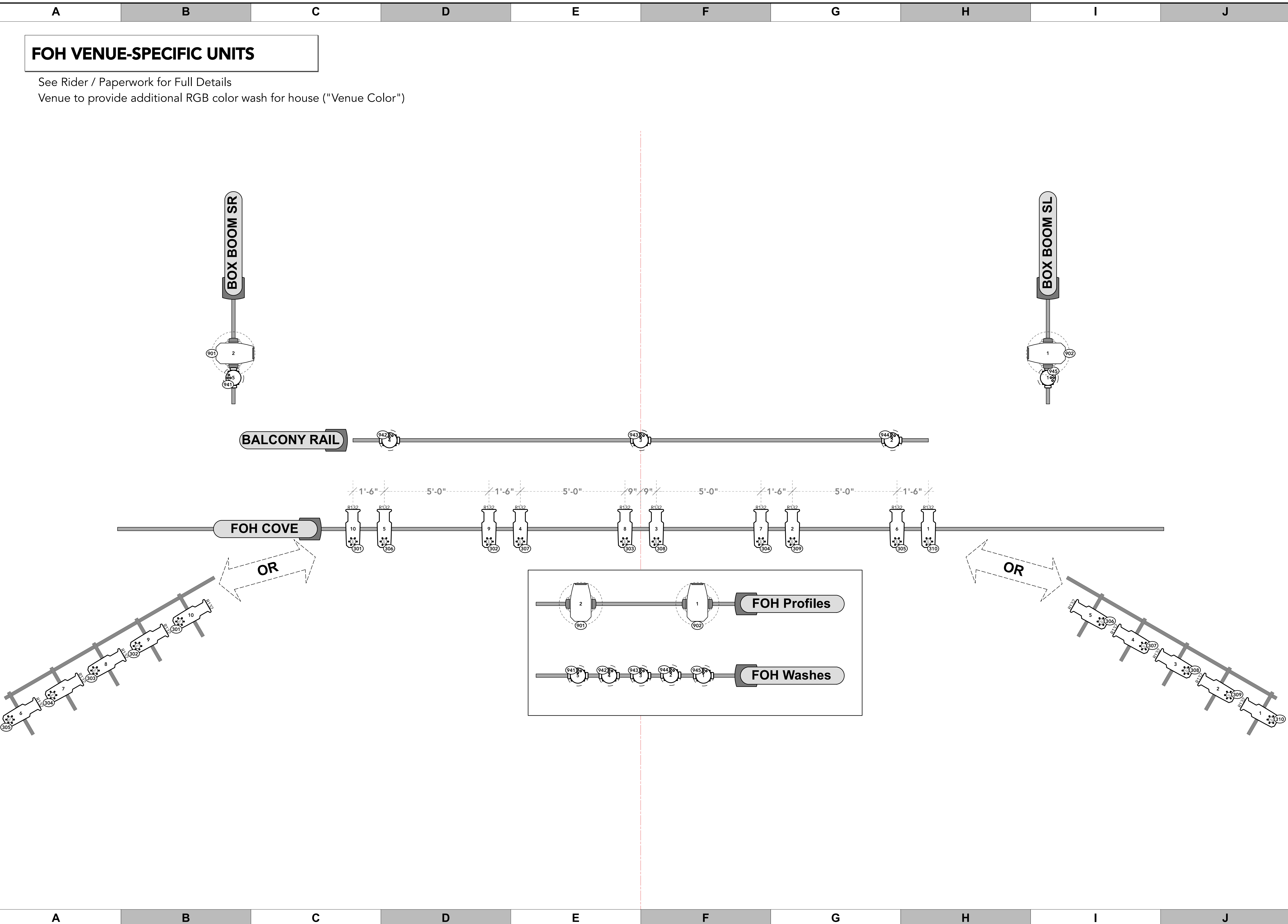
SCALE	1/2" = 1'	DWG NUMBER	L02
PG SIZE	ARCH D		OF 8

LIGHT PLOT - DS TOWERS AS NOTED

FOH VENUE-SPECIFIC UNITS

See Rider / Paperwork for Full Details
 Venue to provide additional RGB color wash for house ("Venue Color")

0
1
2
3
4
5
6
7



KEY TO INSTRUMENTATION

	Ayrton Eurus	50
	Mac Aura XB	33
	Mac Quantum Wash	4
	26° Lustr III	4
	36° Lustr III	24
	GLP JDC1	2
	Rosco DMG Dash	4
	Asteria NYX	7
	Look TinyCX Fogger	2
	Misc. Practical	Varies
	Generic RGB Par	Varies
	Elation KL CYC L	11
	Colorforce II 72	8

LEGEND

ABBREVIATIONS: R = Rosco, G = GAM, A = Apollo, LS = Line Set, GP = Ground Plan, LX = Electric, TD = Tech. Direct, LD = Lighting Design

FOCUS: CLIP, CLIP, CLIP

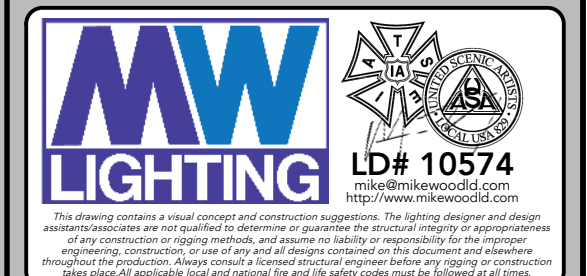
LENS: LENS, LENS, LENS

TEMPLATE: TEMPLATE, TEMPLATE, TEMPLATE

UNIT #: UNIT #, UNIT #, UNIT #

ENGINE TYPE: ENGINE TYPE, ENGINE TYPE, ENGINE TYPE

CHANNEL #: CHANNEL #, CHANNEL #, CHANNEL #



REVISION HISTORY

NO.	REVISION	DATE	BY
001	ISSUE	04/25/2024	MMW
002	FOH REVISION	04/25/2024	MMW
003	ISSUE	05/02/2024	MMW
004	ISSUE	05/02/2024	MMW
005	ISSUE	05/02/2024	MMW

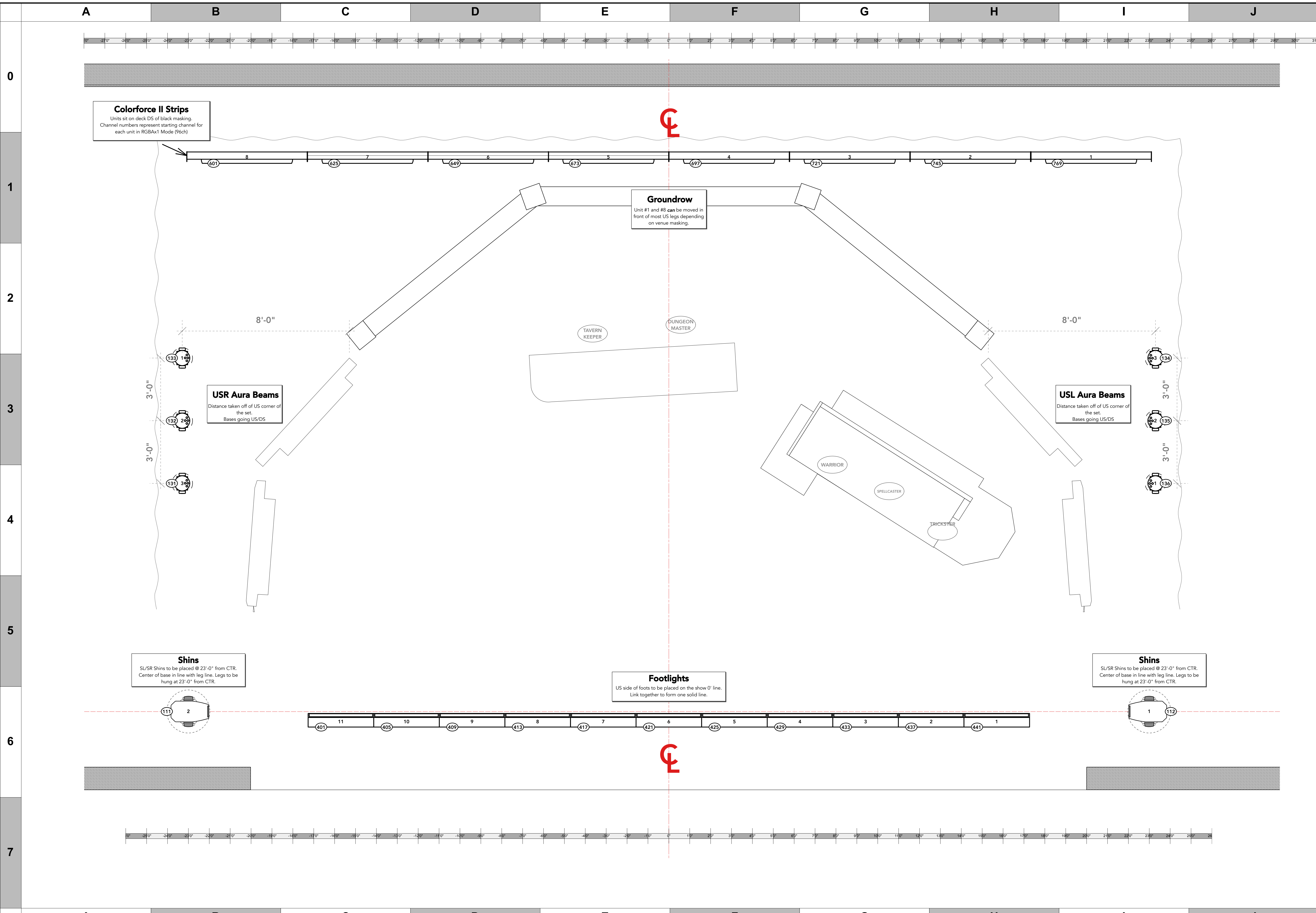
DUNGEONS & DRAGONS THE TWENTY SIDED TAVERN

PRODUCTION STAFF
 DIRECTOR: MICHAEL FELL
 LIGHTING DESIGNER: MIKE WOOD
 SCENIC DESIGNER: KC MCCOY
 ASSOCIATE LD: ABBY MAY
 PROGRAMMER: HENRY WILEN
 PRODUCTION ELEC: OLIVIA DONIPHAN
 MANAGEMENT: TINC

FIRST NATIONAL TOUR
 2025 - 2026

SCALE: NTS
 PG SIZE: ARCH D
 DWG NUMBER: L03
 OF 8

LIGHT PLOT - FOH
 AS NOTED



Colorforce II Strips
Units sit on deck DS of black masking.
Channel numbers represent starting channel for each unit in RGBAX1 Mode (Y6ch)

Groundrow
Unit #1 and #8 can be moved in front of most US legs depending on venue masking.

USR Aura Beams
Distance taken off of US corner of the set.
Bases going US/DS

USL Aura Beams
Distance taken off of US corner of the set.
Bases going US/DS

Shins
SU/SR Shins to be placed @ 23'-0" from CTR.
Center of base in line with leg line. Legs to be hung at 23'-0" from CTR.

Shins
SU/SR Shins to be placed @ 23'-0" from CTR.
Center of base in line with leg line. Legs to be hung at 23'-0" from CTR.

Footlights
US side of foots to be placed on the show 0' line.
Link together to form one solid line.

KEY TO INSTRUMENTATION

	Ayrton Eurus	50
	Mac Aura XB	33
	Mac Quantum Wash	4
	26° Lustr III	4
	36° Lustr III	24
	GLP JDC1	2
	Rosco DMG Dash	4
	Asteria NYX	7
	Look TinyCX Fogger	2
	Misc. Practical	Varies
	Generic RGB Par	Varies
	Elation KL CYC L	11
	Colorforce II 72	8

LEGEND

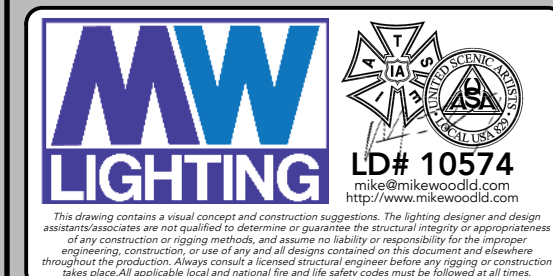
ABBREVIATIONS: R = Rosco, G = GAM, A = Apollo, LS = Line Set, GP = Ground Plan, LX = Electric, TD = Tech. Direct, LD = Lighting Design

FOCUS: FOC, CLR

LENS: LENS, TEMPL

UNIT: UNIT #, CHANNEL #

ENGINE TYPE: ENGINE TYPE



REVISION HISTORY

NO.	REVISION	DATE	BY
01	ISSUE	04/26/24	MMW
02	ISSUE	05/02/24	MMW
03	ISSUE	05/02/24	MMW
04	ISSUE	05/02/24	MMW
05	ISSUE	05/02/24	MMW
06	ISSUE	05/02/24	MMW
07	ISSUE	05/02/24	MMW
08	ISSUE	05/02/24	MMW
09	ISSUE	05/02/24	MMW
10	ISSUE	05/02/24	MMW
11	ISSUE	05/02/24	MMW
12	ISSUE	05/02/24	MMW
13	ISSUE	05/02/24	MMW
14	ISSUE	05/02/24	MMW
15	ISSUE	05/02/24	MMW
16	ISSUE	05/02/24	MMW
17	ISSUE	05/02/24	MMW
18	ISSUE	05/02/24	MMW
19	ISSUE	05/02/24	MMW
20	ISSUE	05/02/24	MMW
21	ISSUE	05/02/24	MMW
22	ISSUE	05/02/24	MMW
23	ISSUE	05/02/24	MMW
24	ISSUE	05/02/24	MMW
25	ISSUE	05/02/24	MMW
26	ISSUE	05/02/24	MMW
27	ISSUE	05/02/24	MMW
28	ISSUE	05/02/24	MMW
29	ISSUE	05/02/24	MMW
30	ISSUE	05/02/24	MMW
31	ISSUE	05/02/24	MMW
32	ISSUE	05/02/24	MMW
33	ISSUE	05/02/24	MMW
34	ISSUE	05/02/24	MMW
35	ISSUE	05/02/24	MMW
36	ISSUE	05/02/24	MMW
37	ISSUE	05/02/24	MMW
38	ISSUE	05/02/24	MMW
39	ISSUE	05/02/24	MMW
40	ISSUE	05/02/24	MMW
41	ISSUE	05/02/24	MMW
42	ISSUE	05/02/24	MMW
43	ISSUE	05/02/24	MMW
44	ISSUE	05/02/24	MMW
45	ISSUE	05/02/24	MMW
46	ISSUE	05/02/24	MMW
47	ISSUE	05/02/24	MMW
48	ISSUE	05/02/24	MMW
49	ISSUE	05/02/24	MMW
50	ISSUE	05/02/24	MMW

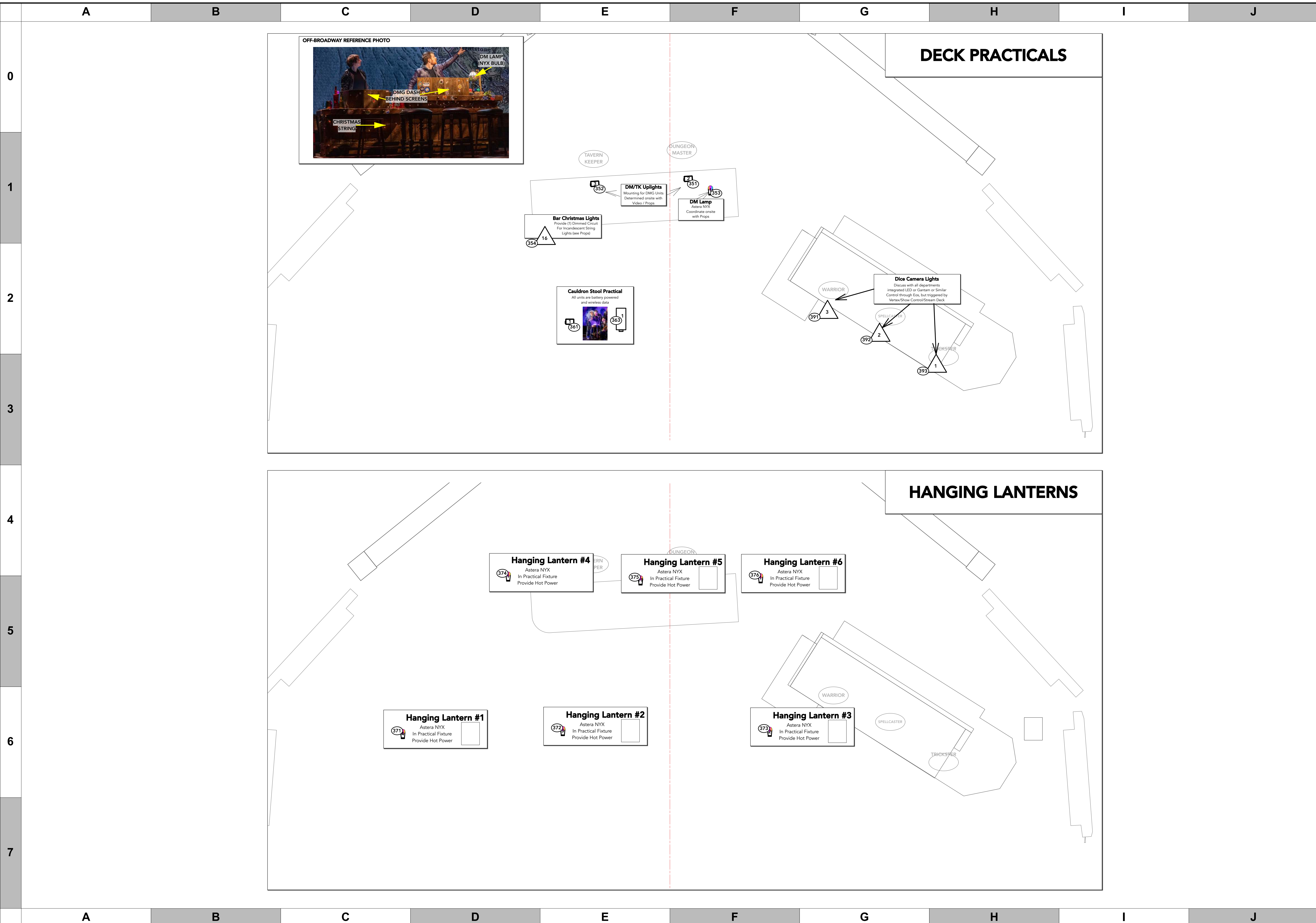
DUNGEONS & DRAGONS THE TWENTY SIDED TAVERN

PRODUCTION STAFF
DIRECTOR: MICHAEL FELL
LIGHTING DESIGNER: MIKE WOOD
SCENIC DESIGNER: KC MCCOY
ASSOCIATE LD: ABBY MAY
PROGRAMMER: HENRY WILEN
PRODUCTION ELEC: OLIVIA DONIPHAN
MANAGEMENT: TINC

FIRST NATIONAL TOUR
2025 - 2026

SCALE 1/2" = 1'
PG SIZE ARCH D
DWG NUMBER L04 OF 8

LIGHT PLOT - DECK DECK FIXTURES



KEY TO INSTRUMENTATION

	Ayrton Eurus	50
	Mac Aura XB	33
	Mac Quantum Wash	4
	26° Lustr III	4
	36° Lustr III	24
	GLP JDC1	2
	Rosco DMG Dash	4
	Asteria NYX	7
	Look TinyCX Fogger	2
	Misc. Practical	Varies
	Generic RGB Par	Varies
	Elation KL CYC L	11
	Colorforce II 72	8

LEGEND

ABBREVIATIONS: R = Rosco, G = GAM, A = Apollo, LS = Line Set, GP = Ground Plan, LX = Electric, TD = Tech. Direct, LD = Lighting Dept.

FOCUS: CLIP, CLIP, CLIP, CLIP, CLIP, CLIP, CLIP, CLIP, CLIP, CLIP

LENS: 5, 5, 5, 5, 5, 5, 5, 5, 5, 5

TEMPLATE: 5, 5, 5, 5, 5, 5, 5, 5, 5, 5

UNIT #: 5, 5, 5, 5, 5, 5, 5, 5, 5, 5

ENGINE TYPE: 5, 5, 5, 5, 5, 5, 5, 5, 5, 5

CHANNEL #: 5, 5, 5, 5, 5, 5, 5, 5, 5, 5



MW LIGHTING LD# 10574

www.mwlighting.com

This lighting system is a loaned item and must be returned to MW Lighting. The lighting designer and rigging crew are responsible for the safe use of the lighting system. The lighting designer and rigging crew are responsible for the safe use of the lighting system. The lighting designer and rigging crew are responsible for the safe use of the lighting system.

REVISION HISTORY

NO.	REVISION	DATE	BY
001	ISSUED	04/20/2025	MMW
002	REVISED	04/20/2025	MMW
003	REVISED	04/20/2025	MMW
004	REVISED	04/20/2025	MMW
005	REVISED	04/20/2025	MMW

DUNGEONS & DRAGONS THE TWENTY-SIDED TAVERN

PRODUCTION STAFF

DIRECTOR: MICHAEL FELL
 LIGHTING DESIGNER: MIKE WOOD
 SCENIC DESIGNER: KC MCCGEORGE
 ASSOCIATE LD: ABBY MAY
 PROGRAMMER: HENRY WILEN
 PRODUCTION ELEC: OLIVIA DONIPHAN
 MANAGEMENT: TINC

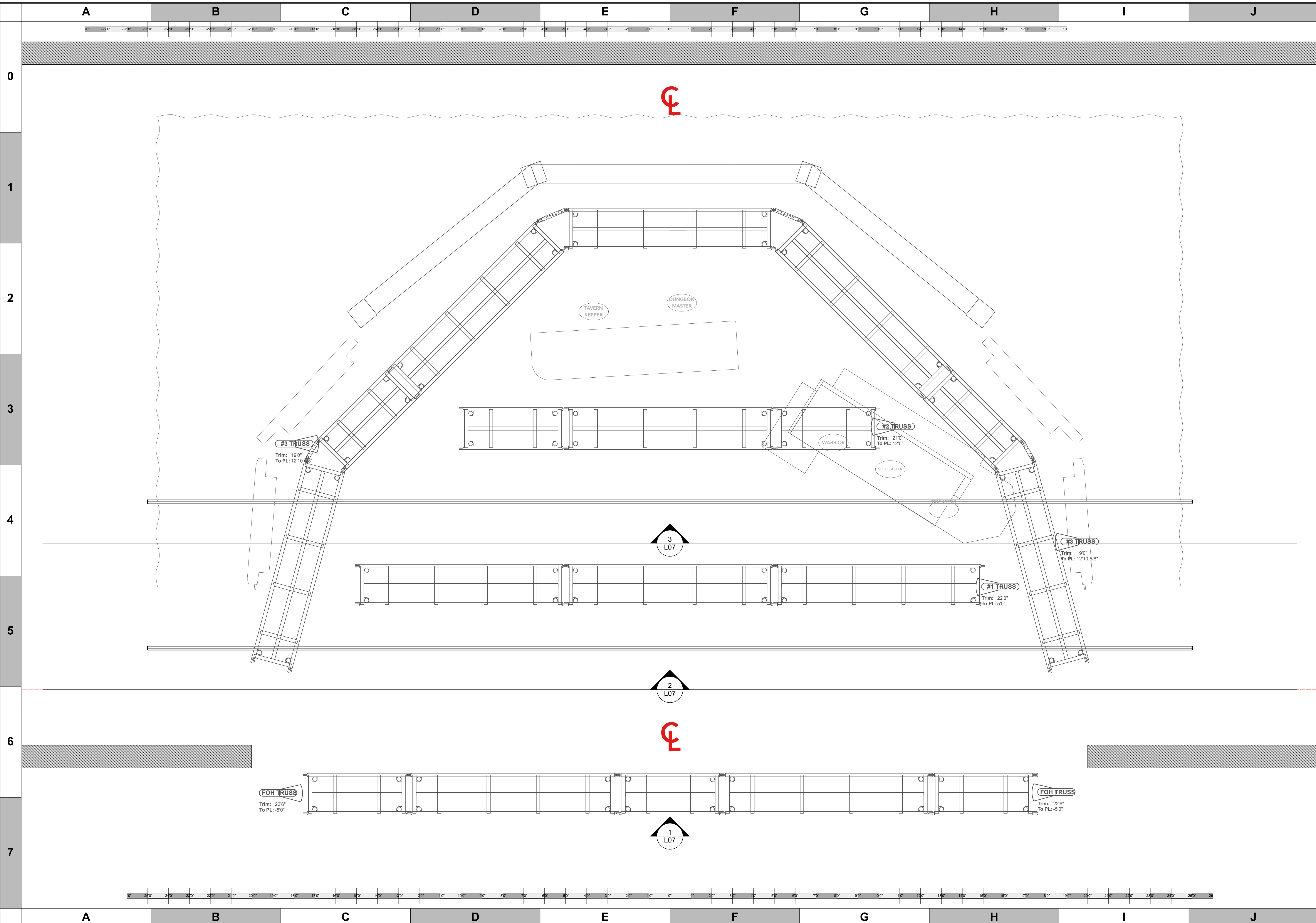
FIRST NATIONAL TOUR
2025 - 2026

SCALE 1/2" = 1'

PG SIZE ARCH D

DWG NUMBER **L05** OF 8

LIGHT PLOT - SET LX
SET LX - DECK



KEY TO INSTRUMENTATION

	Ayrton Eurus	50
	Mac Aura XB	33
	Mac Quantum Wash	4
	26° Lustr III	4
	36° Lustr III	24
	GLP JDC1	2
	Rosco DMG Dash	4
	Asteria NYX	7
	Look TinyCX Fogger	2
	Misc. Practical	Varies
	Generic RGB Par	Varies
	Elation KL CYC L	11
	Colorforce II 72	8

LEGEND

ABBREVIATIONS: EOCUS, ED-LOR, FOC, CLR, R = Rosco, G = GAM, A = Apollo, LS = Line Set, GP = Ground Plan, LX = Electric, TD = Tech. Direct, LD = Lighting Dept.

LENS, TEMPLATE, UNIT #, ENGINE TYPE, CHANNEL #



MW LIGHTING LD# 10574
 This lighting system is a new design and construction equipment. The lighting designer and manufacturer warrant the system to be free from defects in materials and workmanship for a period of 12 months from the date of installation. The lighting designer and manufacturer warrant the system to be free from defects in materials and workmanship for a period of 12 months from the date of installation. The lighting designer and manufacturer warrant the system to be free from defects in materials and workmanship for a period of 12 months from the date of installation.

REVISION HISTORY

NO.	REVISION	DATE	BY
001	ISSUE	05/21/2025	MMW
002	REVISED	05/21/2025	MMW
003	REVISED	05/21/2025	MMW
004	REVISED	05/21/2025	MMW
005	REVISED	05/21/2025	MMW
006	REVISED	05/21/2025	MMW
007	REVISED	05/21/2025	MMW
008	REVISED	05/21/2025	MMW
009	REVISED	05/21/2025	MMW
010	REVISED	05/21/2025	MMW

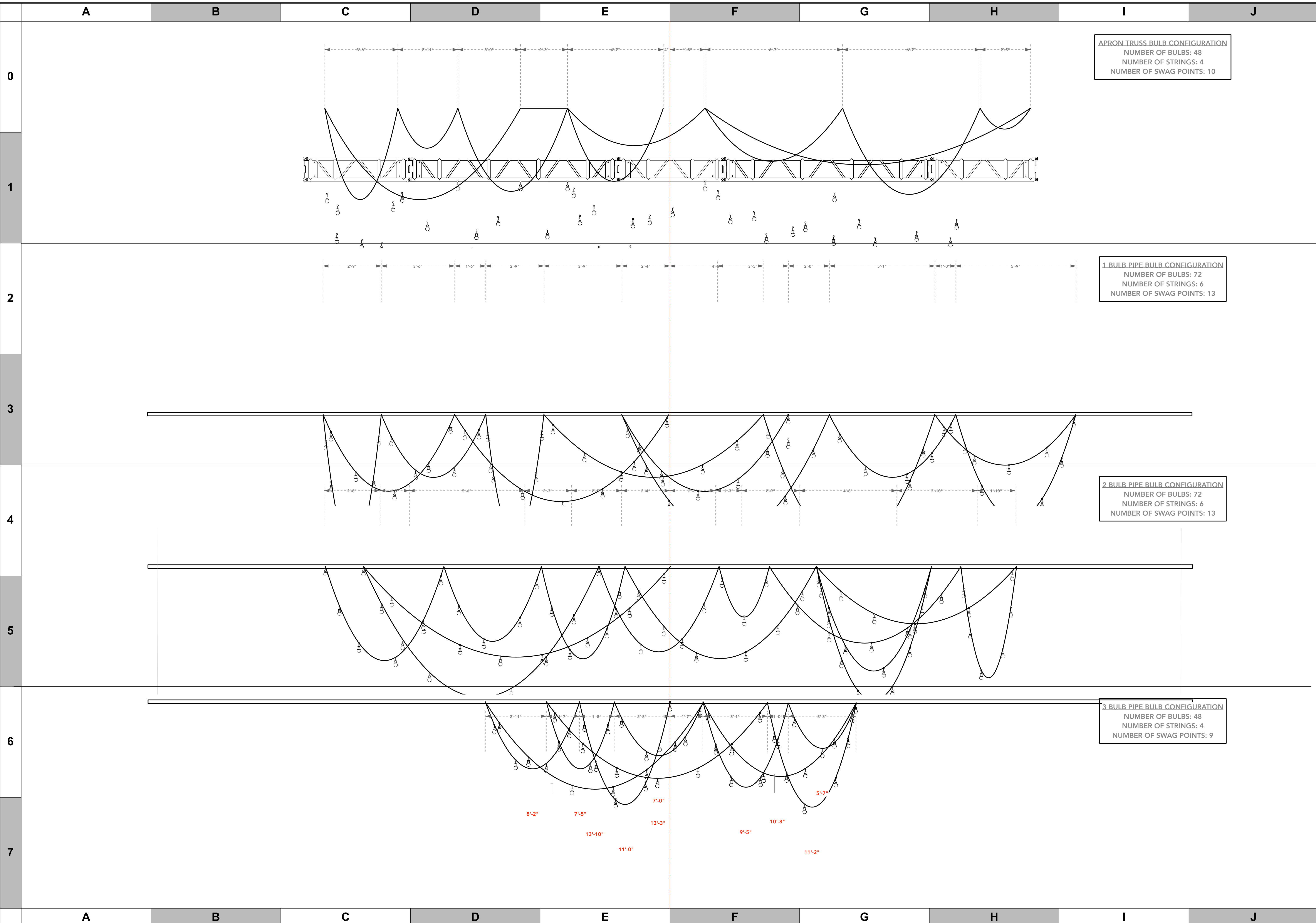
DUNGEONS & DRAGONS THE TWENTY SIDED TAVERN

PRODUCTION STAFF
 DIRECTOR: MICHAEL FELL
 LIGHTING DESIGNER: MIKE WOOD
 SCENIC DESIGNER: KC MCCOY
 ASSOCIATE LD: ABBY MAY
 PROGRAMMER: HENRY WILEN
 PRODUCTION ELEC: OLIVIA DONIPHAN
 MANAGEMENT: TINC

FIRST NATIONAL TOUR 2025-2026

SCALE 1/2" = 1'
 PG SIZE ARCH D
 DWG NUMBER **L06** OF 8

LIGHT PLOT - FESTOONS
 FESTOON STRINGS



APRON TRUSS BULB CONFIGURATION
 NUMBER OF BULBS: 48
 NUMBER OF STRINGS: 4
 NUMBER OF SWAG POINTS: 10

1 BULB PIPE BULB CONFIGURATION
 NUMBER OF BULBS: 72
 NUMBER OF STRINGS: 6
 NUMBER OF SWAG POINTS: 13

2 BULB PIPE BULB CONFIGURATION
 NUMBER OF BULBS: 72
 NUMBER OF STRINGS: 6
 NUMBER OF SWAG POINTS: 13

3 BULB PIPE BULB CONFIGURATION
 NUMBER OF BULBS: 48
 NUMBER OF STRINGS: 4
 NUMBER OF SWAG POINTS: 9

8'-2" 7'-5" 7'-0" 13'-10" 13'-3" 9'-5" 10'-8" 11'-2"
 11'-0"

KEY TO INSTRUMENTATION

- Ayrton Eurus 50
- Mac Aura XB 33
- Mac Quantum Wash 4
- 26° Lustr III 4
- 36° Lustr III 24
- GLP JDC1 2
- Rosco DMG Dash 4
- Asteria NYX 7
- Look TinyCX Fogger 2
- Misc. Practical **Varies**
- Generic RGB Par **Varies**
- Elation KL CYC L 11
- Colorforce II 72 8

LEGEND

ABBREVIATIONS:
 R = Rosco
 G = GAM
 A = Apollo
 LS = Line Set
 GP = Ground Plan
 LX = Electric
 TD = Tech. Direct.
 LD = Lighting Design

FOCUS:
 ED-LOR
 CLR

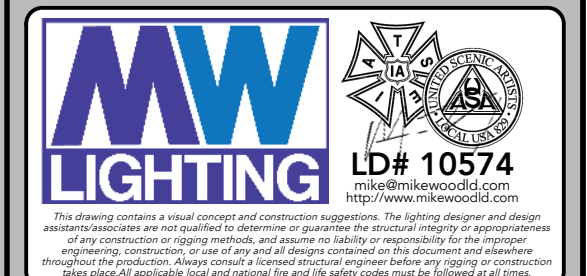
LENS:
 LENS#

TEMPLATE:
 TEMPLATE

UNIT #:
 UNIT #

ENGINE TYPE:
 ENGINE TYPE

CHANNEL #:
 CHANNEL #



REVISION HISTORY

NO.	REVISION	DATE	BY
001	ISSUE	06/20	MMW
002	REVISED	07/25	MMW
003	REVISED	07/25	MMW
004	REVISED	07/25	MMW
005	REVISED	07/25	MMW
006	REVISED	07/25	MMW
007	REVISED	07/25	MMW
008	REVISED	07/25	MMW
009	REVISED	07/25	MMW
010	REVISED	07/25	MMW

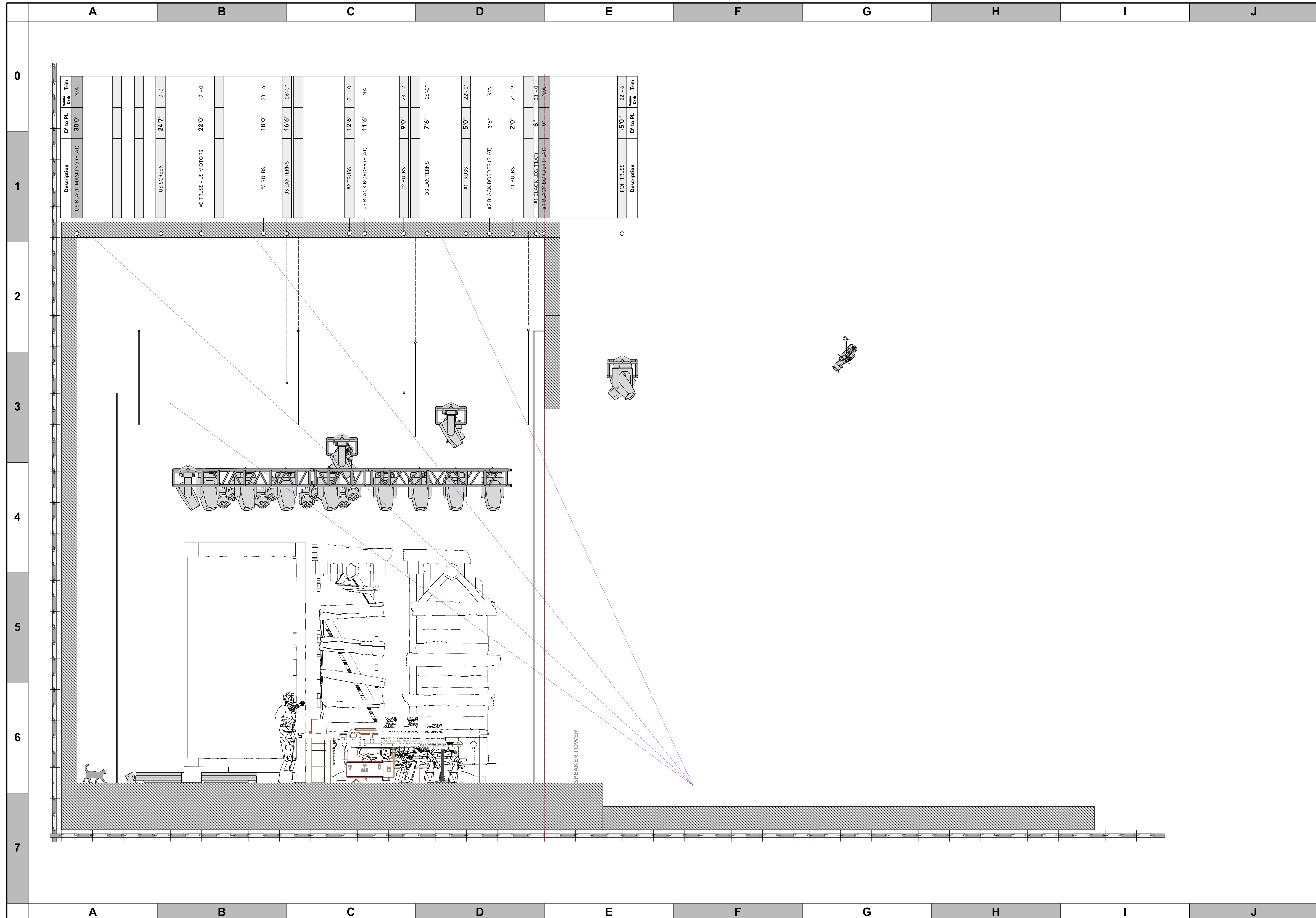
DUNGEONS & DRAGONS THE TWENTY SIDED TAVERN

PRODUCTION STAFF
 DIRECTOR: MICHAEL FELL
 LIGHTING DESIGNER: MIKE WOOD
 SCENIC DESIGNER: KC MCCOY
 ASSOCIATE LD: ABBY MAY
 PROGRAMMER: HENRY WILEN
 PRODUCTION ELEC: OLIVIA DONIPHAN
 MANAGEMENT: TINC

FIRST NATIONAL TOUR
 2025 - 2026

SCALE 1/2" = 1'
 PG SIZE ARCH D
 DWG NUMBER **L07**
 OF 8

FESTOON DETAIL
 FESTOON STRINGS



Description	D' to PL	Truss	Truss
US BLACK MASKING (FLAT)	30'0"	N/A	
US SCREEN	24'7"	0'0"	
#3 TRUSS - US MOTORS	22'0"	19' - 0"	
#3 BULBS	18'0"	23' - 6"	
US LANTERNS	16'6"	26'0"	
#2 TRUSS	12'6"	21' - 0"	
#3 BLACK BORDER (FLAT)	11'6"	N/A	
#2 BULBS	9'0"	23' - 2"	
DS LANTERNS	7'6"	26'0"	
#1 TRUSS	5'0"	22' - 0"	
#2 BLACK BORDER (FLAT)	3'6"	N/A	
#1 BULBS	2'0"	21' - 9"	
#1 BLACK LEG (FLAT)	6"	23' - 0"	
#1 BLACK BORDER (FLAT)	0"	N/A	
FOH TRUSS	-5'0"	22' - 6"	
Description	D' to PL	Truss	Truss

KEY TO INSTRUMENTATION

	Ayrton Eurus	50
	Mac Aura XB	33
	Mac Quantum Wash	4
	26° Lustr III	4
	36° Lustr III	24
	GLP JDC1	2
	Rosco DMG Dash	4
	Asteria NYX	7
	Look TinyCX Fogger	2
	Misc. Practical	Varies
	Generic RGB Par	Varies
	Elation KL CYC L	11
	Colorforce II 72	8

LEGEND

ABBREVIATIONS:	FOCUS	CLIP
R = Rosco	CD-LOR	
G = GAM		
A = Apollo	LENS	
LS = Line Set	TEMPLATE	
GP = Ground Plan	UNIT #	
LX = Electric	ENGINE TYPE	
TD = Tech. Direct	CHANNEL #	
LD = Lighting Design		



MW LIGHTING LD# 10574
 michael@mwlighting.com
 703.444.1111

REVISION HISTORY

NO.	REVISION	DATE	BY
01	ISSUE	05/21/25	MMW
02	REVISED	05/21/25	MMW
03	REVISED	05/21/25	MMW
04	REVISED	05/21/25	MMW
05	REVISED	05/21/25	MMW
06	REVISED	05/21/25	MMW
07	REVISED	05/21/25	MMW
08	REVISED	05/21/25	MMW
09	REVISED	05/21/25	MMW
10	REVISED	05/21/25	MMW

DUNGEONS & DRAGONS THE TWENTY-SIDED TAVERN

PRODUCTION STAFF

DIRECTOR:	MICHAEL FELL
LIGHTING DESIGNER:	MIKE WOOD
SCENIC DESIGNER:	KC MCCGEORGE
ASSOCIATE LD:	ABBY MAY
PROGRAMMER:	HENRY WILEN
PRODUCTION ELEC:	OLIVIA DONIPHAN
MANAGEMENT:	TINC

FIRST NATIONAL TOUR 2025 - 2026

SCALE	3/8" = 1'	DWG NUMBER	L08
PG SIZE	ARCH D	OF 8	

LIGHTING SECTION @CL > SL