

KEY TO INSTRUMENTATION

	Martin Mac Viper Performance	7
	Martin Mac 250 Entour	10
	Martin Mac 250 Wash	12
	Martin MAC 101 CT	6
	ETC Source 4 19° 750w	4
	ETC Source 4 26° 750w	36
	ETC S4-19° LED Lustr II	3
	ETC S4-26° LED Lustr II	2
	ETC S4-36° LED Lustr II	14
	ETC S4-50° LED Lustr II	4
	ETC Colorsource Par DB	12
	Rosco DMG Dash	3
	Rosco Miro Cube 4C	9
	Axtera NYX Bulb	20'
	Lazer - Unique II	1

DRAWING NOTES
- All units have top hats - not drawn for visual clarity

LEGEND

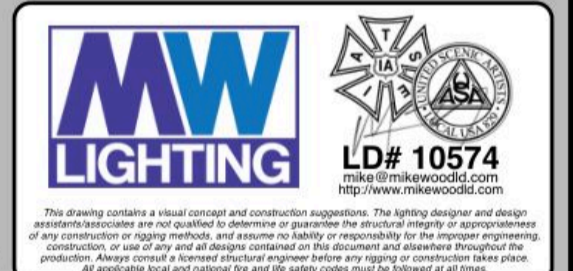
ABBREVIATIONS:
R = Rosco
G = GAM
A = Apollo
LS = Line Set
GP = Ground Plan
LD = Tech. Direct.
LD = Lighting Design

FOCUS COLOR:
— FOC CLR
— CLR

LENSE:
— LENS

TEMPLATE:
— UNIT #

ENGINE TYPE:
— CHANNEL #



REVISION HISTORY

NO.	REVISION	DATE	BY
A01	PRELIM SHOP BID	11/02/24	MTW
A02	INCANDESCENT SWAPS	11/11/24	MTW
B01	SHOP PREP	11/20/24	MTW

DUNGEONS & DRAGONS THE TWENTY-SIDED TAVERN

PRODUCTION STAFF
DIRECTOR: MICHAEL FELL
LIGHTING DESIGNER: MIKE WOOD
SCENIC DESIGNER: KE MCGEORGE
PROGRAMMER: LACHLAN HOGAN
HEAD OF LX: MATT OSBORN
LX SUPERVISOR: RAFFAELE WATT
PRODUCTION LX: MATT QUINCE

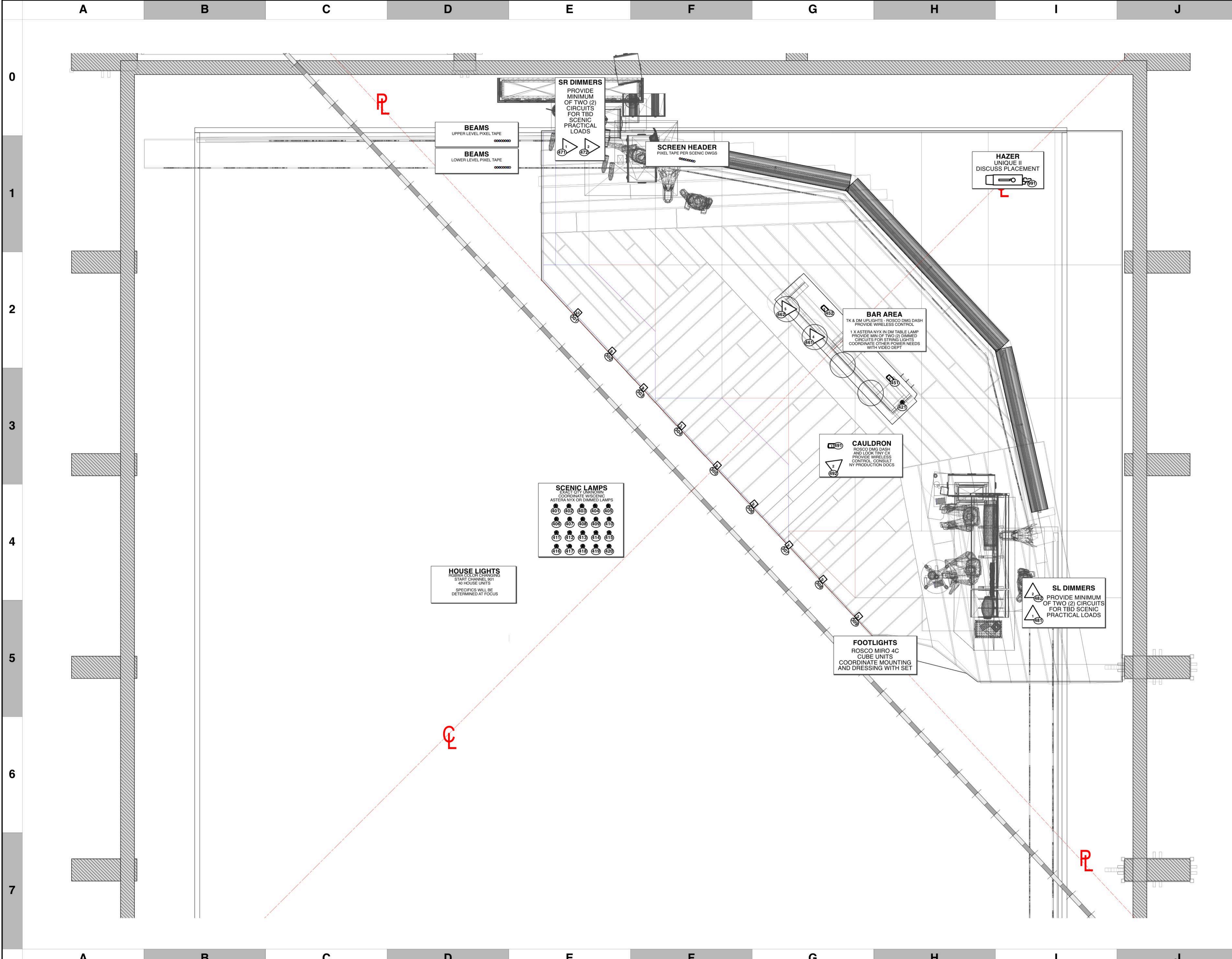
SYDNEY OPERA HOUSE STUDIO THEATRE

SCALE 1:30
UNLESS OTHERWISE NOTED

PG SIZE ISO A1

DWG NUMBER L01

LIGHT PLOT - OVERHEAD
Overhead Hang



BEAMS
UPPER LEVEL PIXEL TAPE

BEAMS
LOWER LEVEL PIXEL TAPE

SR DIMMERS
PROVIDE MINIMUM OF TWO (2) CIRCUITS FOR TBD SCENIC PRACTICAL LOADS

SCREEN HEADER
PIXEL TAPE PER SCENIC DWGS

HAZER
UNIQUE II
DISCUSS PLACEMENT

BAR AREA
TK & DM UPLIGHTS - ROSCO DMG DASH
PROVIDE WIRELESS CONTROL

1 X ASTERA NYX IN DM TABLE LAMP
PROVIDE MIN OF TWO (2) DIMMED CIRCUITS FOR STRING LIGHTS
COORDINATE OTHER POWER NEEDS WITH VIDEO DEPT

CAULDRON
ROSCO DMG DASH AND LOOK TINY CX
PROVIDE WIRELESS CONTROL CONSULT NY PRODUCTION DOCS

SCENIC LAMPS
EXACT CITY LAMPING
COORDINATE W/SCENIC
ASTERA NYX OR DIMMED LAMPS

401	402	403	404	405
406	407	408	409	410
411	412	413	414	415
416	417	418	419	420

HOUSE LIGHTS
ROSCO DMG DASH
START CHANNEL 801
40 HOUSE UNITS
SPECIFICS WILL BE DETERMINED AT FOCUS

FOOTLIGHTS
ROSCO MIRO 4C
CUBE UNITS
COORDINATE MOUNTING AND DRESSING WITH SET

SL DIMMERS
PROVIDE MINIMUM OF TWO (2) CIRCUITS FOR TBD SCENIC PRACTICAL LOADS

KEY TO INSTRUMENTATION

	Martin Mac Viper Performance	7
	Martin Mac 250 Entour	10
	Martin Mac 250 Wash	12
	Martin MAC 101 CT	6
	ETC Source 4 19° 750w	4
	ETC Source 4 26° 750w	36
	ETC S4-19° LED Lustr II	3
	ETC S4-26° LED Lustr II	2
	ETC S4-36° LED Lustr II	14
	ETC S4-50° LED Lustr II	4
	ETC Colorsource Par DB	12
	Rosco DMG Dash	3
	Rosco Miro Cube 4C	9
	Axtera NYX Bulb	20'
	Hazer - Unique II	1

DRAWING NOTES

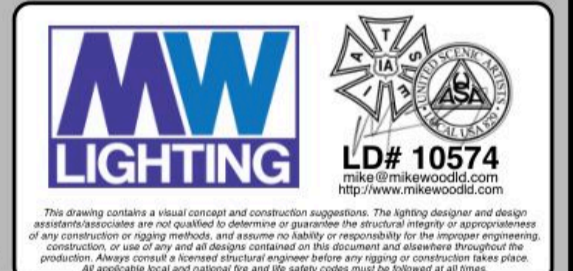
LEGEND

ABBREVIATIONS: R = Rosco, G = GAM, A = Apollo, LS = Line Set, GP = Ground Plan, LX = Electric, TD = Tech. Direct, LD = Lighting Design

FOCUS: COLOR, FOC CLR

LENSE, TEMPLATE

UNIT #, ENGINE TYPE, CHANNEL #



REVISION HISTORY

NO.	REVISION	DATE	BY
A01	PRELIM SHOP BID	11/02/24	MTW
A02	INCANDESCENT SWAPS	11/11/24	MTW
B01	SHOP PREP	11/20/24	MTW

DUNGEONS & DRAGONS THE TWENTY-SIDED TAVERN

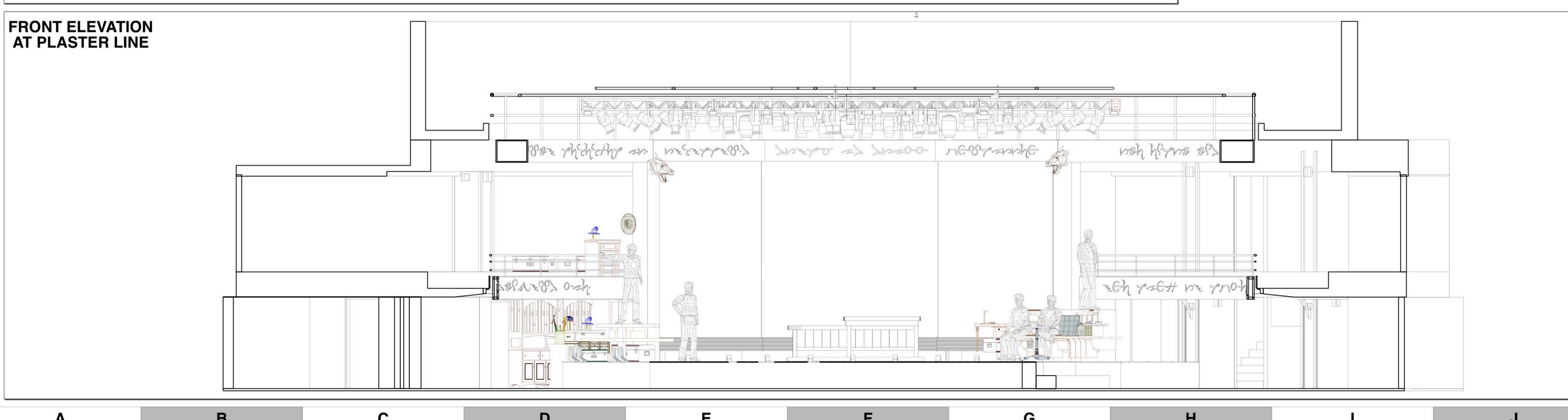
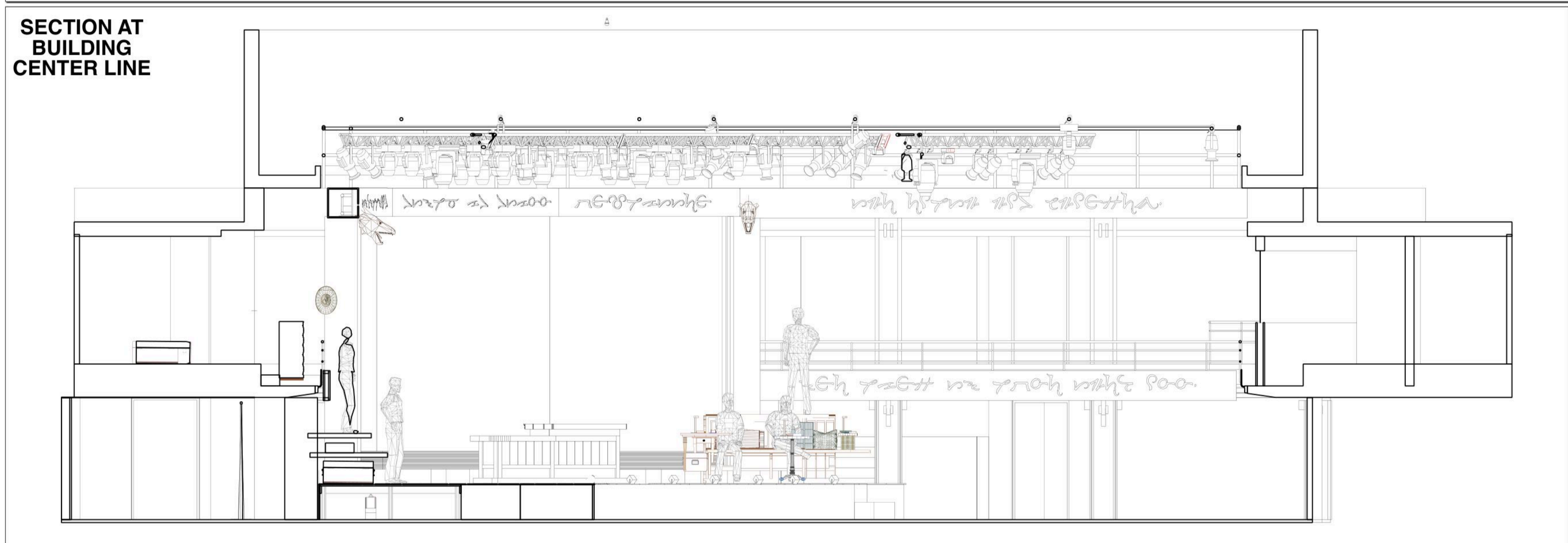
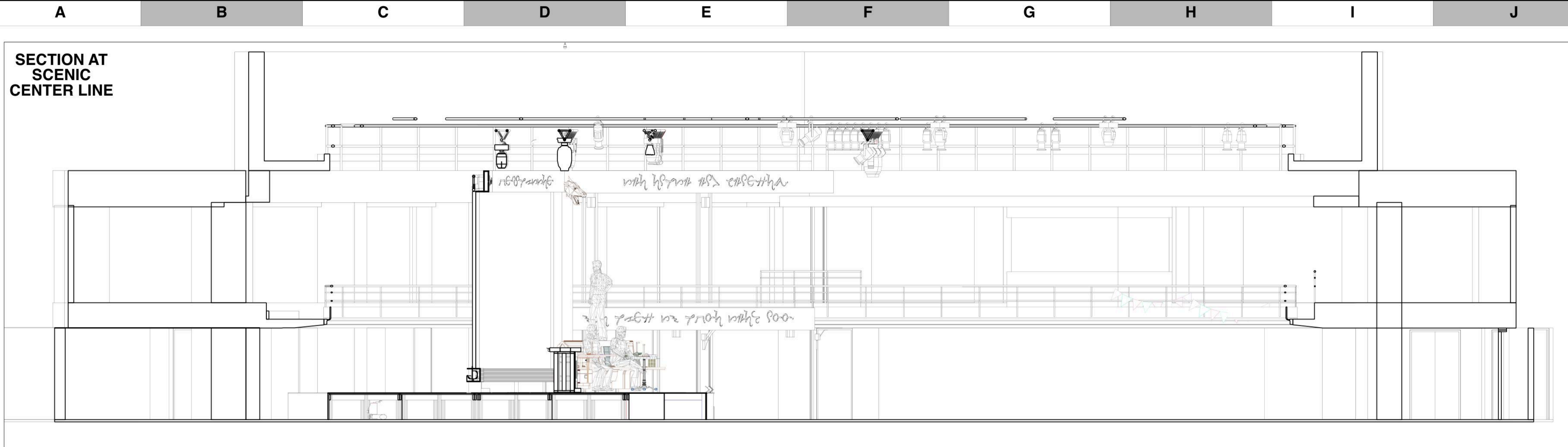
PRODUCTION STAFF

DIRECTOR: MICHAEL FELL
LIGHTING DESIGNER: MIKE WOOD
SCENIC DESIGNER: KE MCGEORGE
PROGRAMMER: LACHLAN HOGAN
HEAD OF LX: MATT OSBORN
LX SUPERVISOR: RAFFAELE WATT
PRODUCTION LX: MATT QUINCE

SYDNEY OPERA HOUSE STUDIO THEATRE

SCALE 1:30
PG SIZE ISO A1
DWG NUMBER L02

LIGHT PLOT - SCENIC SET ELECTRICS



KEY TO INSTRUMENTATION

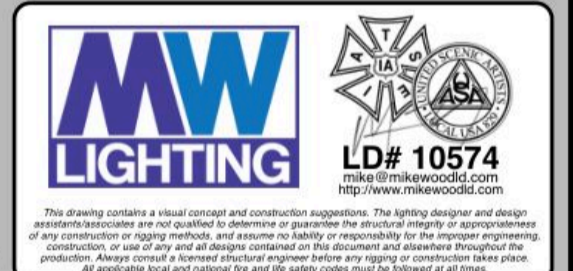
	Martin Mac Viper Performance	7
	Martin Mac 250 Entour	10
	Martin Mac 250 Wash	12
	Martin MAC 101 CT	6
	ETC Source 4 19° 750w	4
	ETC Source 4 26° 750w	36
	ETC S4-19° LED Lustr II	3
	ETC S4-26° LED Lustr II	2
	ETC S4-36° LED Lustr II	14
	ETC S4-50° LED Lustr II	4
	ETC Colorsourc Par DB	12
	Rosco DMG Dash	3
	Rosco Miro Cube 4C	9
	Axtera NYX Bulb	20
	Zer - Unique II	1

DRAWING NOTES

LEGEND

ABBREVIATIONS:

R = Rosco	FOCUS	—	FOC
G = GAM	COLOR	—	CLR
A = Apollo	LENS	—	
LS = Line Set	TEMPLATE	—	
GP = Ground Plan	UNIT #	—	
LX = Electric	ENGINE TYPE	—	
TD = Tech. Direct.	CHANNEL #	—	
LD = Lighting Design			



REVISION HISTORY

NO.	REVISION	DATE	BY
A01	PRELIM SHOP BID	11/20/24	MTW
A02	INCANDESCENT SWAPS	11/11/24	MTW
B01	SHOP PREP	11/20/24	MTW

DUNGEONS & DRAGONS THE TWENTY-SIDED TAVERN

PRODUCTION STAFF

DIRECTOR:	MICHAEL FELL
LIGHTING DESIGNER:	MIKE WOOD
SCENIC DESIGNER:	KC MCGEORGE
PROGRAMMER:	LACHLAN HOGAN
HEAD OF LX:	MATT OSBORN
LX SUPERVISOR:	RAFFAELE WATT
PRODUCTION LX:	MATT QUINCE

SCALE **1:30** DWG NUMBER **L03**

PG SIZE **ISO A1**

LIGHT PLOT - SECTION
Views as Noted

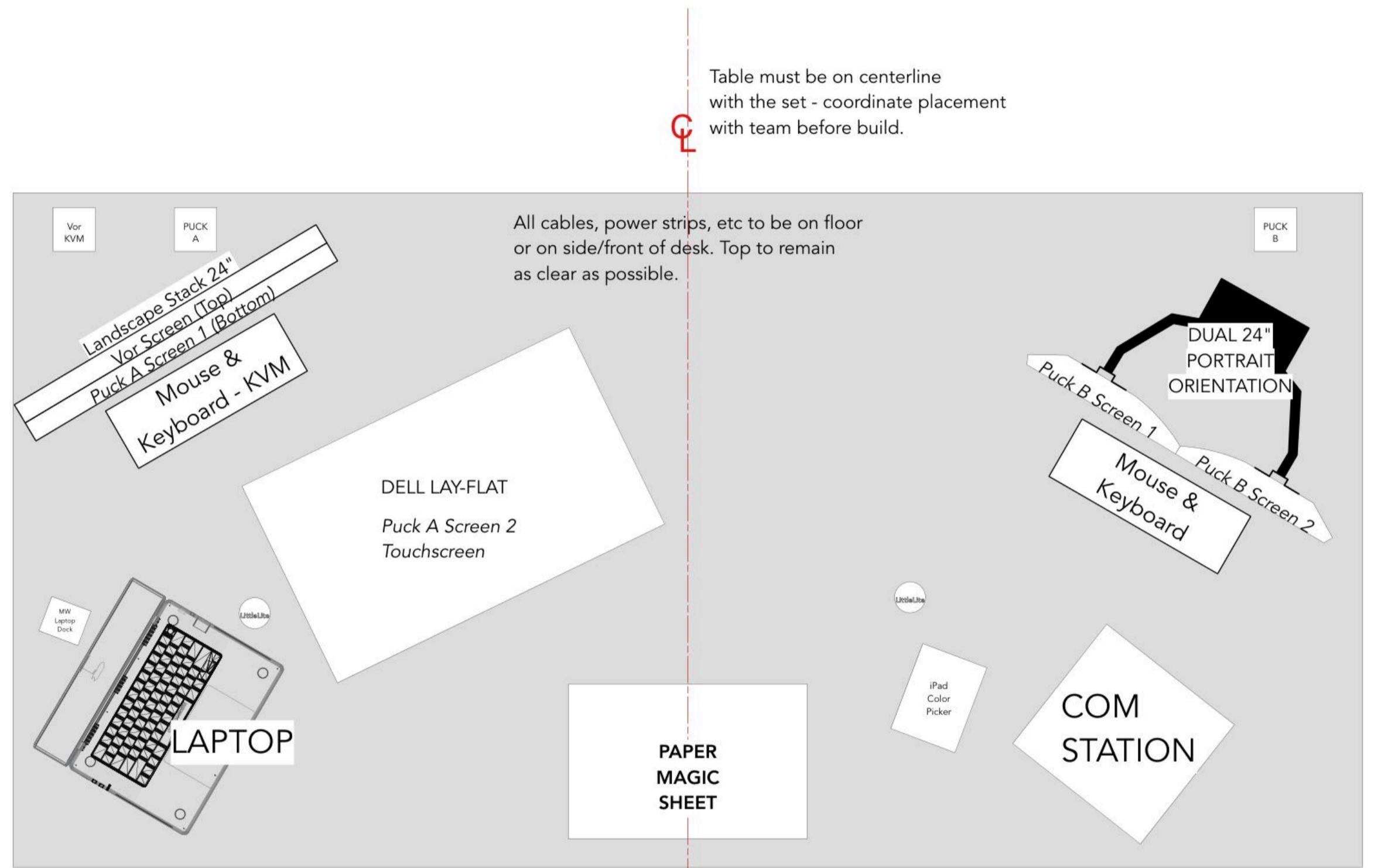


Table must be on centerline with the set - coordinate placement with team before build.

All cables, power strips, etc to be on floor or on side/front of desk. Top to remain as clear as possible.

- Provide (4) Lighting Network Connections:**
- Puck A (Left)
 - Puck B (Right)
 - Laptop Dock (Left)
 - iPad (Right)

- Provide AC Power:**
- As needed for required equipment
 - Additional outlet(s) for chargers, cameras, etc

- Designer will provide his own com headset**
- Please ensure com station has role provisioned with Electric Mic type.
 - Minimum 2 channels - Public/Private
 - Please inform team of system type/specs prior to load in.

Mike
(LD)

DRAWING NOTES

LEGEND

ABBREVIATIONS:

- R = Rosco
- G = GAM
- A = Apollo
- LS = Line Set
- GP = Ground Plan
- LX = Electric
- TD = Tech. Direct.
- LD = Lighting Dsgnr

FOCUS COLOR

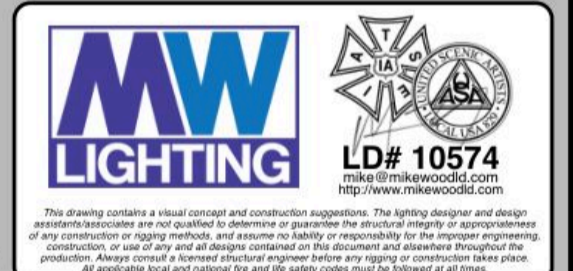
LENS

TEMPLATE

UNIT #

ENGINE TYPE

CHANNEL #



REVISION HISTORY

NO.	REVISION	DATE	BY
A01	PRELIM SHOP BID	11/02/24	MTW
A02	INCANDESCENT SWAPS	11/11/24	MTW
B01	SHOP PREP	11/20/24	MTW

DUNGEONS & DRAGONS THE TWENTY-SIDED TAVERN

PRODUCTION STAFF

DIRECTOR:	MICHAEL FELL
LIGHTING DESIGNER:	MIKE WOOD
SCENIC DESIGNER:	KC MCGEORGE
PROGRAMMER:	LACHLAN HOGAN
HEAD OF LX:	MATT OSBORN
LX SUPERVISOR:	RAFFAELE WATT
PRODUCTION LX:	MATT QUINCE

SCALE	NTS	DWG NUMBER
PG SIZE	ISO A1	L04

LIGHTING TECH TABLE PLAN VIEW