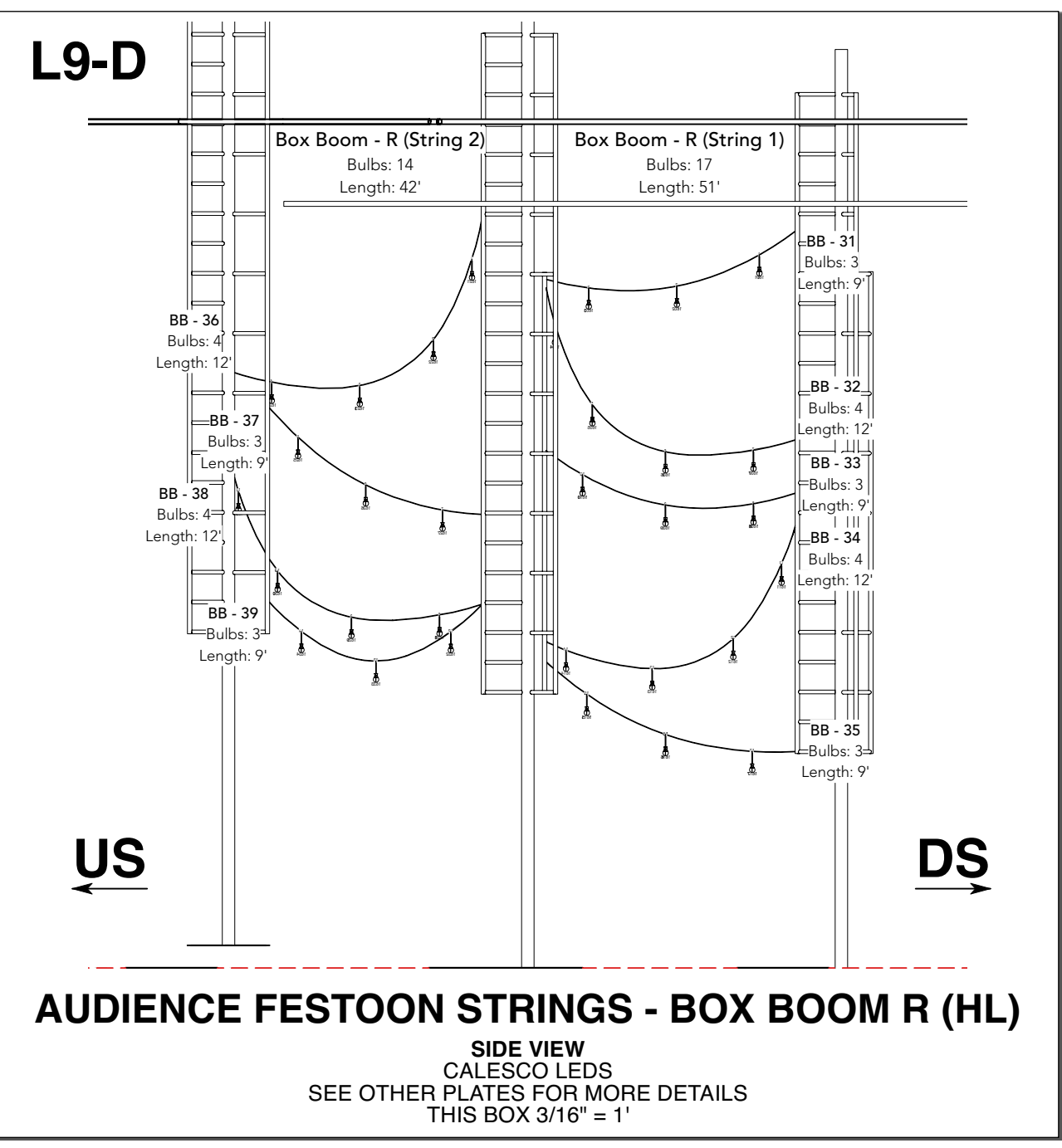
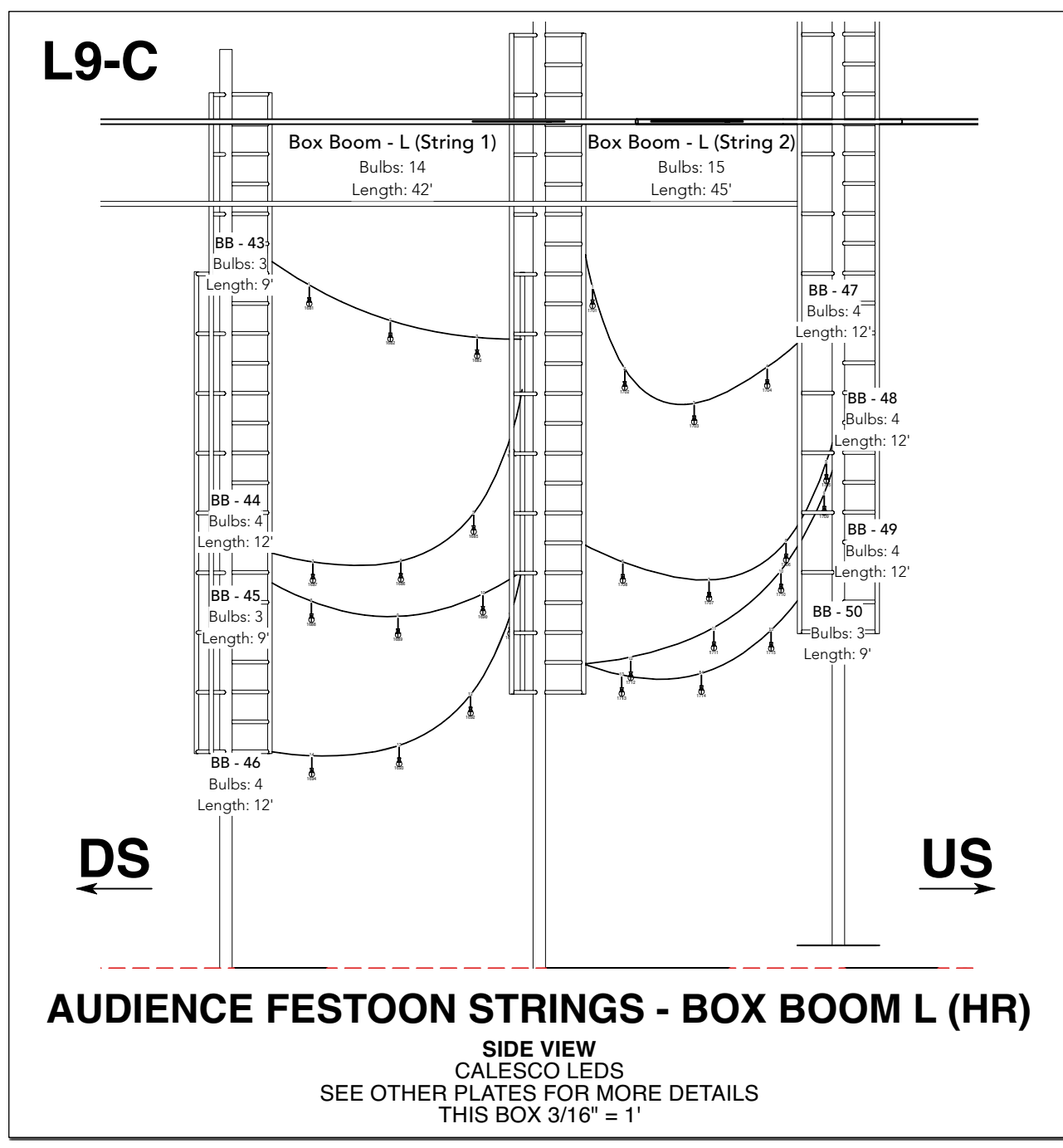
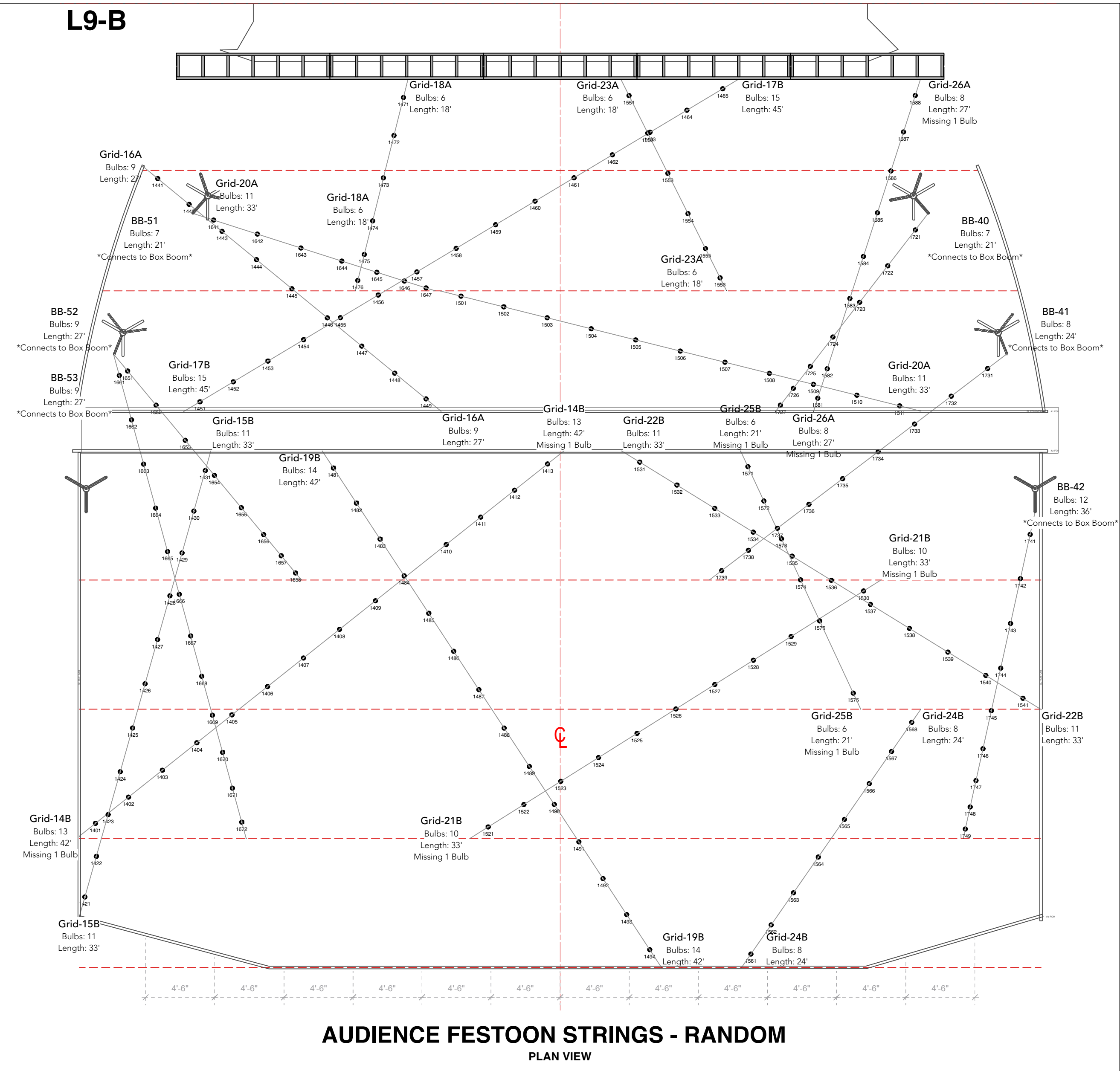
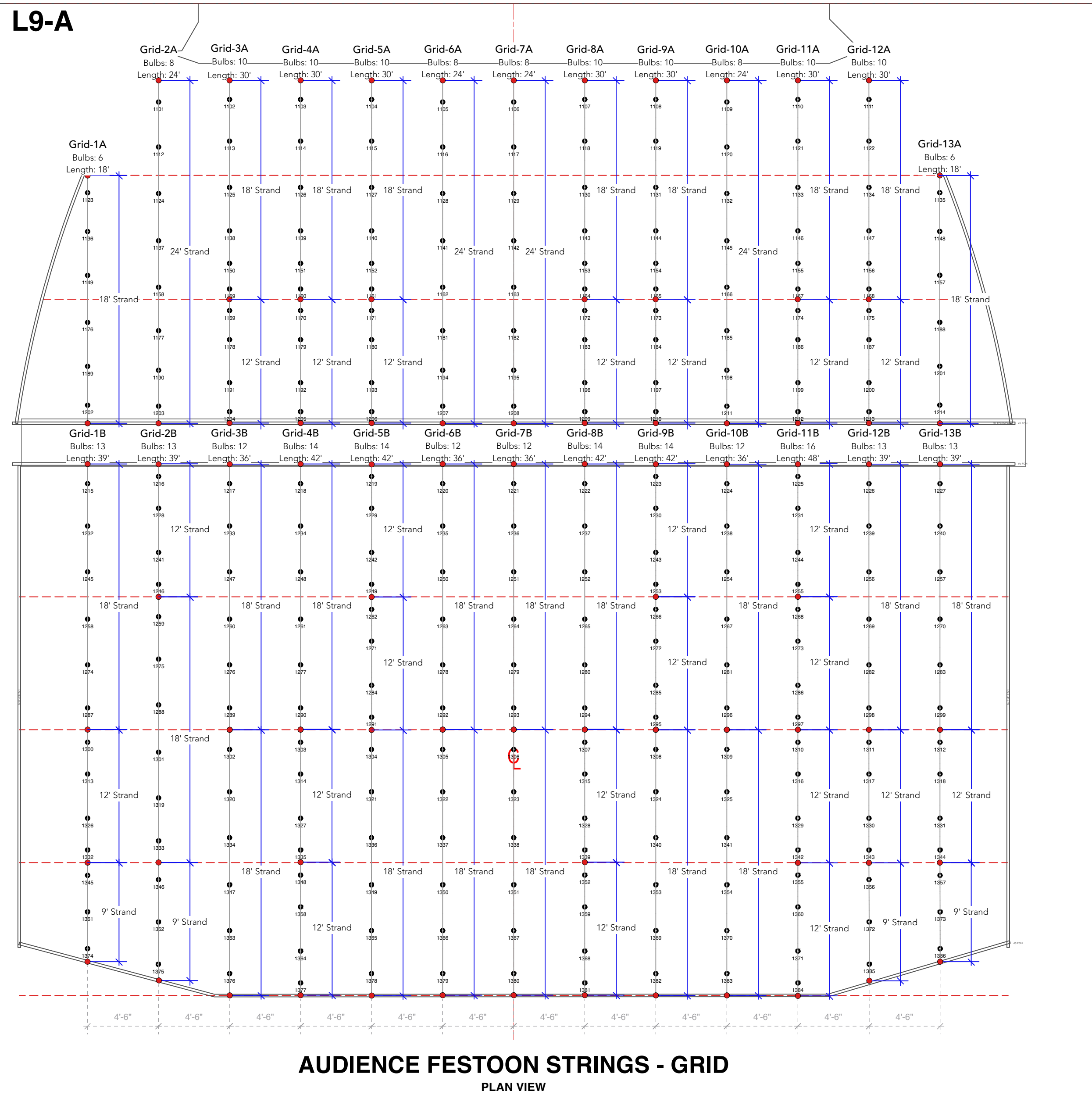


A B C D E F G H I J



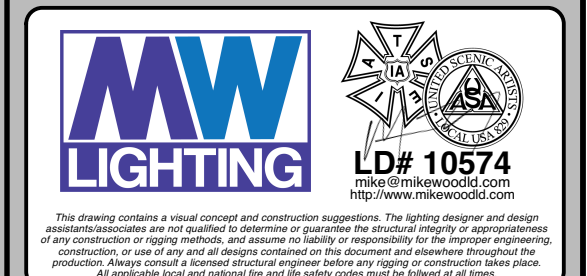
**KEY TO INSTRUMENTATION**

- Elation Artiste Picasso
- Martin Mac Aura XB
- ETC S4-14° LED Lustr 3
- ETC S4-19° LED Lustr 3
- ETC S4-26° LED Lustr 3
- ETC S4-36° LED Lustr 3
- ETC S4-50° LED Lustr 3
- ETC ColorSource PAR Lenses Vary
- Rosco Miro Cube 4CA
- ChromaQ Colorforce II 72
- Axtera NYX Bulb
- MDG ATMe Hazer

**LEGEND**

ABBREVIATIONS:  
 R = Rosco  
 A = Apollo  
 G = GAM  
 LS = Line Set  
 GP = Ground Plan  
 LX = Electric  
 TD = Tech. Direct.  
 LD = Lighting Design

FOCUS COLOR  
 FOC CLR  
 LENS  
 TEMPLATE  
 UNIT #  
 ENGINE TYPE  
 CHANNEL #



**REVISION HISTORY**

NO.	REVISION	DATE	BY
A01	DOCUMENT PREP	1/20/24	MTW
A02	SHOP BID	2/1/24	MTW
A03	SET ELECTRICS ADDR.	2/28/24	MTW
A04	POSITION UPDATES	2/29/24	MTW
B01	SHOP PREP	2/25/24	MTW
B02	CANOPY CONSTR.	3/19/24	AGM

**DUNGEONS & DRAGONS THE TWENTY-SIDED TAVERN**

**PRODUCTION STAFF**  
 DUNGEON MASTER: DAGL  
 LIGHTING DESIGNER: MIKE WOOD  
 SCENIC DESIGNER: KC MCGEOGHEE  
 ASSOC LD: DALTON HAMILTON  
 ASSOC LD: ABBY MAY  
 PROD ELEC: DAN MULLINS  
 PROGRAMMER: HENRY WILEN  
 STAGE 42 / OPENING MAY 5, 2024  
 OFF BROADWAY / NEW YORK, NY

SCALE 3/16" = 1'  
 DWG NUMBER **L09**  
 PG SIZE US Arch D

**LX PLOT - AUD CANOPY CONSTRUCTION DRAWING**

A B C D E F G H I J