

LS #	Trim	Venue Deck	D' to PL	Description
46	0'-0"	38'-9 1/2"		
45	0'-0"	38'-1 1/2"		
44	0'-0"	37'-5 1/2"		
43	0'-0"	36'-9 1/2"		
42	0'-0"	36'-1 1/2"		HOUSE CYC (NOT USED)
41	0'-0"	35'-5 1/2"		HOUSE SCRIM (NOT USED)
40	30'-0"	34'-9 1/2"		#4 ELECTRIC (XOVER)
39	0'-0"	33'-5 1/2"		
38	0'-0"	32'-9 1/2"		
37	0'-0"	30'-9 1/2"		[ORCH SHELL #3 - NOT USED]
36	28'-0"	29'-5 1/2"		
35	0'-0"	28'-9 1/2"		FULL STAGE BLACKOUT
34	28'-0"	28'-1 1/2"		#3 ELECTRIC
33	0'-0"	27'-5 1/2"		#5 LEGS
32	0'-0"	26'-1 1/2"		US SCENIC WALL SUPPORT
31	27'-10"	25'-5 1/2"		#2 ELECTRIC
30	0'-0"	24'-9 1/2"		DS SCENIC WALL SUPPORT
29	0'-0"	24'-1 1/2"		
28	28'-5"	23'-5 1/2"		#1 ELECTRIC
27	0'-0"	22'-9 1/2"		#4 LEGS
26	0'-0"	22'-1 1/2"		#4 BORDER
25	0'-0"	20'-9 1/2"		
24	0'-0"	18'-9 1/2"		[ORCH SHELL #2 - NOT USED]
23	0'-0"	17'-5 1/2"		B/O TRAV
22	0'-0"	16'-9 1/2"		#3 BORDER
21	0'-0"	16'-1 1/2"		
20	0'-0"	15'-5 1/2"		#3 LEGS
19	0'-0"	14'-9 1/2"		
18	0'-0"	14'-1 1/2"		
17	0'-0"	13'-5 1/2"		#2 BORDER
16	0'-0"	12'-1 1/2"		
15	0'-0"	11'-5 1/2"		
14	0'-0"	10'-9 1/2"		
13	0'-0"	10'-1 1/2"		
12	0'-0"	9'-5 1/2"		
11	0'-0"	8'-9 1/2"		#2 LEGS
10	0'-0"	8'-1 1/2"		
9	0'-0"	6'-9 1/2"		[ORCH SHELL #1 - NOT USED]
8	0'-0"	5'-5 1/2"		#1 BORDER
7	0'-0"	4'-9 1/2"		
6	0'-0"	4'-1 1/2"		
5	0'-0"	3'-5 1/2"		[PJ SCREEN - NOT USED]
4	0'-0"	2'-9 1/2"		
3	0'-0"	2'-1 1/2"		MAIN CURTAIN (NOT USED)
2	0'-0"	1'-1 1/2"		#1 LEGS
1	0'-0"	0'-9 1/2"		FRONT VALANCE (REF)
N/A	N/A	0"		Plaster Line
LS #	Trim	Venue Deck	D' to PL	Description

KEY TO INSTRUMENTATION

	Robe BMFL Followspot	3
	Martin Mac Viper Performance	17
	Martin Mac Viper Profile	9
	High End SolaSpot 1000	12
	High End SolaFrame Theatre	6
	CHAUVET R2 WASH	18
	ETC Source-4 10"	5
	ETC S4-14" LED Lungsten	17
	ETC S4-14" LED Lustr	6
	ETC S4-19" LED Lustr	18
	ETC S4-26" LED Lustr	26
	ETC S4-36" LED Lustr	26
	Prolights EclipseFS 50deg	2
	Prolights EclipseFS 26deg	4
	ETC S4 Fresnel Lustr	8
	ETC ColorSource PAR-MR	37
	ETC S4-PAR (MFL)	10
	ETC S4-PAR (WFL)	12
	ETC ColorSource Linear 4 Deep Blue	10
	6.25in Top Hat	42
	7.5in Concentric Ring	12
	7.5in Top Hat	16

LEGEND

ABBREVIATIONS:
 R = Rosco
 G = GAM
 A = Apollo
 LS = Line Set
 GP = Ground Plan
 LX = Electric
 TD = Tech. Direct.
 LD = Lighting Design

FOCUS COLOR
 LENS
 TEMPLATE
 UNIT #
 ENGINE TYPE
 CHANNEL #



MW LIGHTING LD# 10574
 www.mwlighting.com
 www.ld10574.com

REVISION HISTORY

NO.	REVISION	DATE	BY
A01	SCENIC LAYOUT / DOC PREP	08 MAR 22	MMW
A02	REVISED PROF	14 MAR 22	MMW
A03	PRELIM / SHIP BLD	29 MAR 22	MMW
A04	SHIP PREP / BLD	12 APR 22	MMW
A05	BOND CHANGES	13 APR 22	MMW
A06	LOAD IN / GROUND CHANGES	29 APR 22	AGM

THE COLOR PURPLE

PRODUCTION STAFF
 DIRECTOR KAMILAH LONG
 LIGHTING DESIGNER MIKE WOOD
 ASSOC LIGHTING DESIGNER ABBY MAY
 ASST. LIGHTING DESIGNER MARCELLA BARBEAU
 PROGRAMMER HARRISON FREN
 PROD. ELEC BARRETT ROBERTS
 ASST. PROD. ELEC MATTHEW PEDDIE

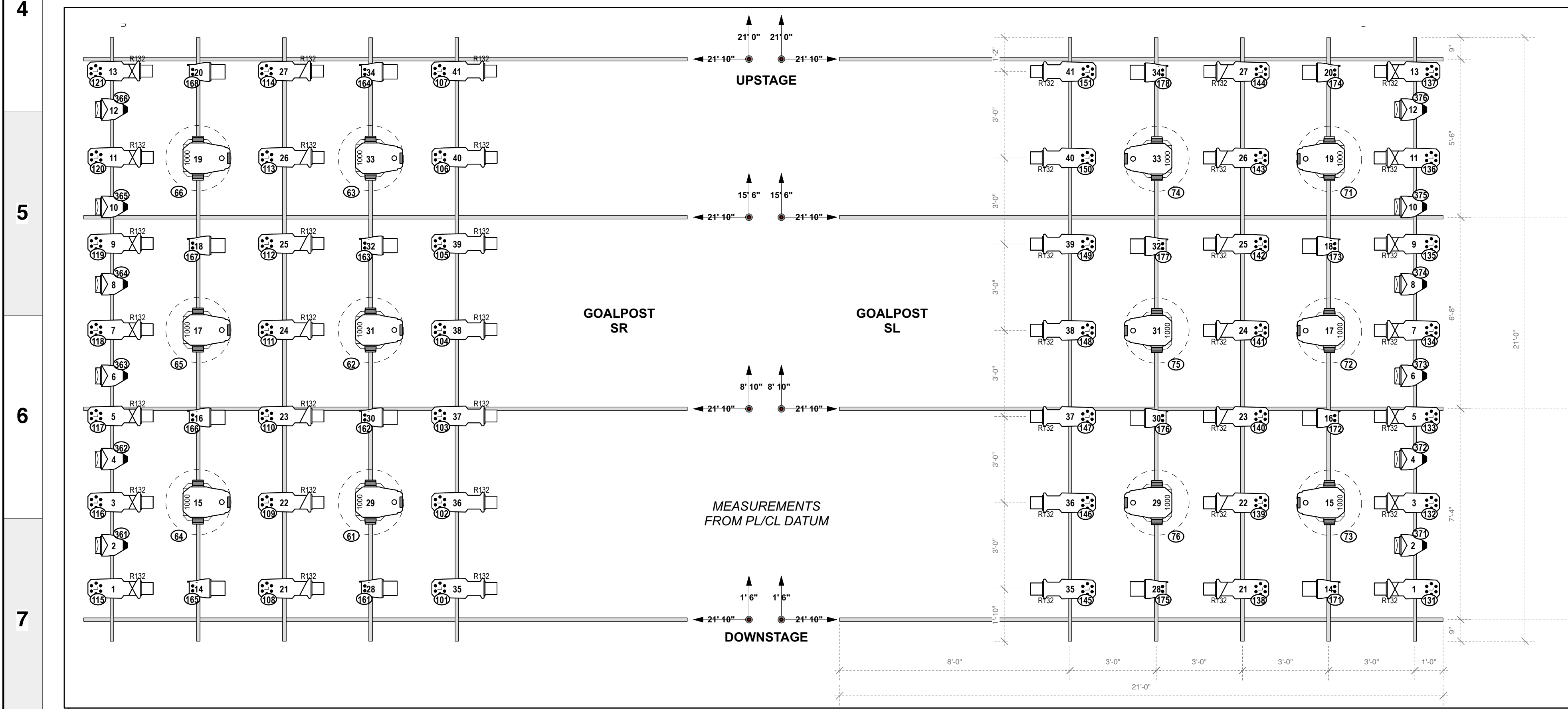
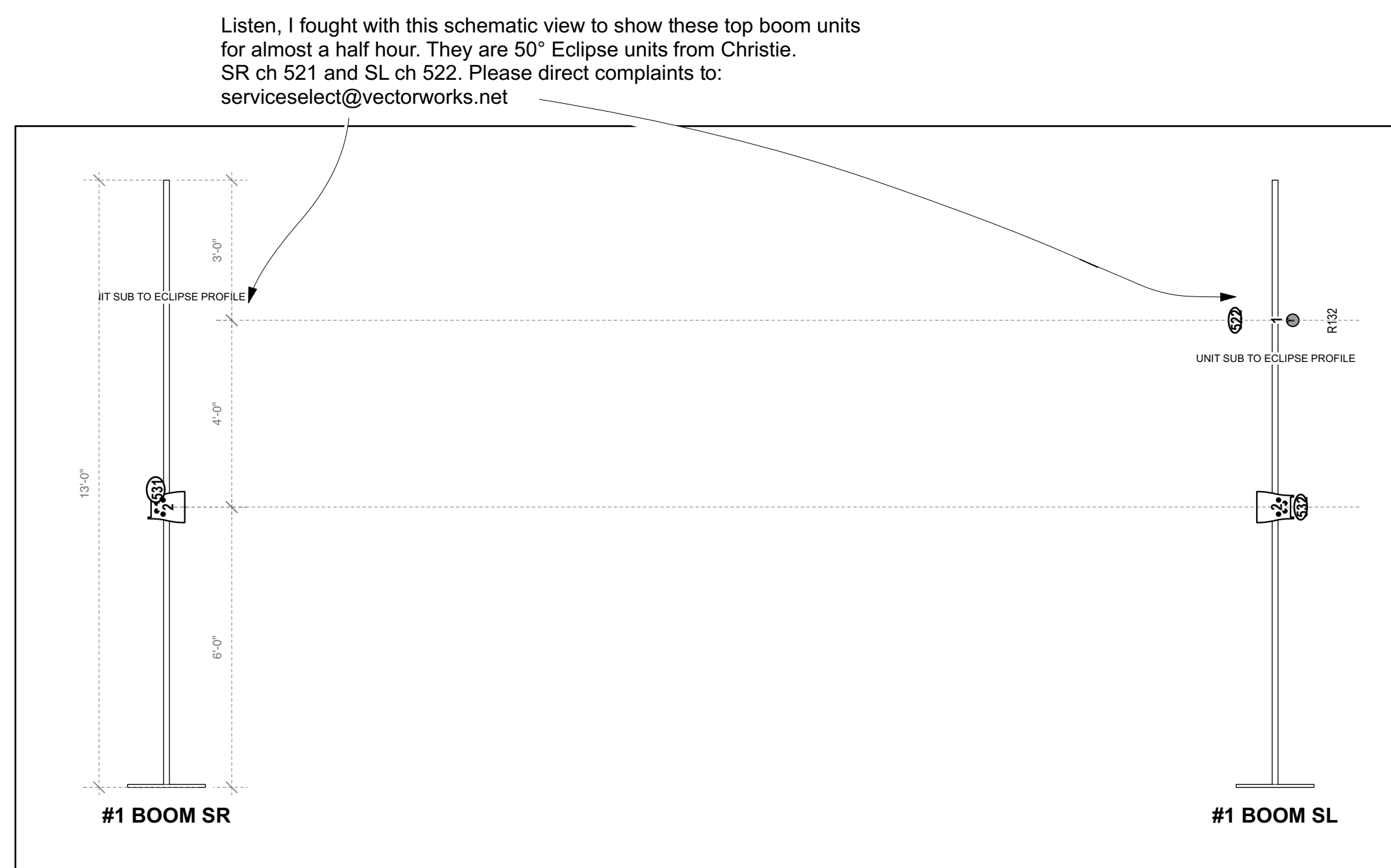
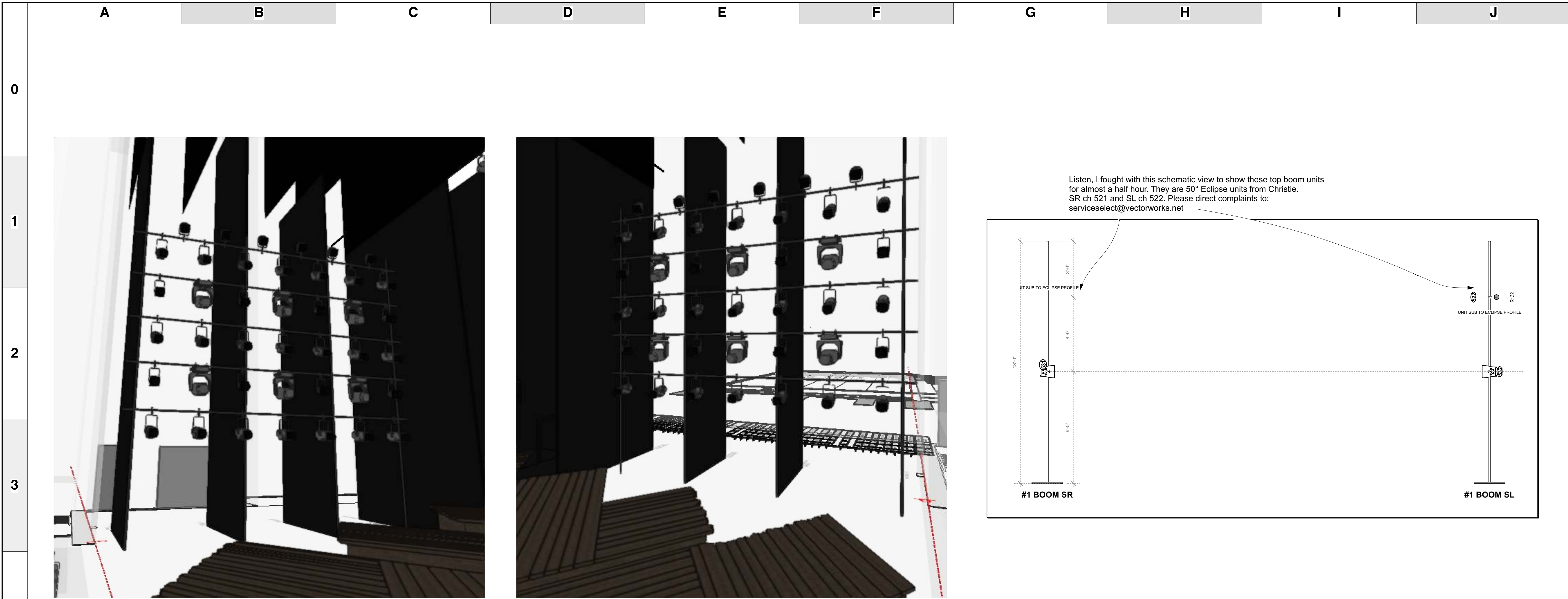
- THE BYERS THEATRE -
 SANDY SPRINGS, GA - MAY 2022

SCALE **3/8" = 1'**
UNLESS OTHERWISE NOTED

PG SIZE **ARCH D**

DWG NUMBER **1**
OF 6

LIGHT PLOT OVER STAGE



UNIT #	HEIGHT	WIDTH	DESCRIPTION
26	0'-0"	22'-1 1/2"	#4 BORDER
25	0'-0"	20'-9 1/2"	
24	0'-0"	18'-9 1/2"	[ORCH SHELL #2 - NOT USED]
23	0'-0"	17'-5 1/2"	B/O TRAV
22	0'-0"	16'-9 1/2"	#3 BORDER
21	0'-0"	16'-1 1/2"	
20	0'-0"	15'-5 1/2"	#3 LEGS
19	0'-0"	14'-9 1/2"	
18	0'-0"	14'-1 1/2"	
17	0'-0"	13'-5 1/2"	#2 BORDER
16	0'-0"	12'-1 1/2"	
15	0'-0"	11'-5 1/2"	
14	0'-0"	10'-9 1/2"	
13	0'-0"	10'-1 1/2"	
12	0'-0"	9'-5 1/2"	
11	0'-0"	8'-9 1/2"	#2 LEGS
10	0'-0"	8'-1 1/2"	
9	0'-0"	6'-9 1/2"	[ORCH SHELL #1 - NOT USED]
8	0'-0"	5'-5 1/2"	#1 BORDER
7	0'-0"	4'-9 1/2"	
6	0'-0"	4'-1 1/2"	
5	0'-0"	3'-5 1/2"	[PJ SCREEN - NOT USED]
4	0'-0"	2'-9 1/2"	
3	0'-0"	2'-1 1/2"	MAIN CURTAIN (NOT USED)
2	0'-0"	1'-1 1/2"	#1 LEGS
1	0'-0"	0'-9 1/2"	FRONT VALANCE (REP)

KEY TO INSTRUMENTATION

	Robe BMFL Followspot	3
	Martin Mac Viper Performance	17
	Martin Mac Viper Profile	9
	High End SolaSpot 1000	12
	High End SolaFrame Theatre	6
	CHAUVET R2 WASH	18
	ETC Source-4 10"	5
	ETC S4-14" LED Tungsten	17
	ETC S4-14" LED Lustr	6
	ETC S4-19" LED Lustr	18
	ETC S4-26" LED Lustr	26
	ETC S4-36" LED Lustr	26
	Prolights EclipseFS 50deg	2
	Prolights EclipseFS 26deg	4
	ETC S4 Fresnel Lustr	8
	ETC ColorSource PAR-MR	37
	ETC S4-PAR (MFL)	10
	ETC S4-PAR (WFL)	12
	ETC ColorSource Linear 4 Deep Blue	10
	6.25in Top Hat	42
	7.5in Concentric Ring	12
	7.5in Top Hat	16

LEGEND

ABBREVIATIONS: R = Rosco, A = Apollo, LS = Line Set, GP = Ground Plan, TD = Tech. Direct., LD = Lighting Design.

FOCUS COLOR: FOC CLR

LENS: LENS

TEMPLATE: TEMPLATE

UNIT #: UNIT #

ENGINE TYPE: ENGINE TYPE

CHANNEL #: CHANNEL #



REVISION HISTORY

NO.	REVISION	DATE	BY
A01	SCENIC LAYOUT / DOC PREP	08 MAR 22	MMW
A02	REVISED PLOT	14 MAR 22	MMW
A03	PRELIM / SHIP BID	29 MAR 22	MMW
A04	SHIP PREP / BUILD	12 APR 22	MMW
A05	LOAD IN / GROUND CHANGES	29 APR 22	AGM

THE COLOR PURPLE

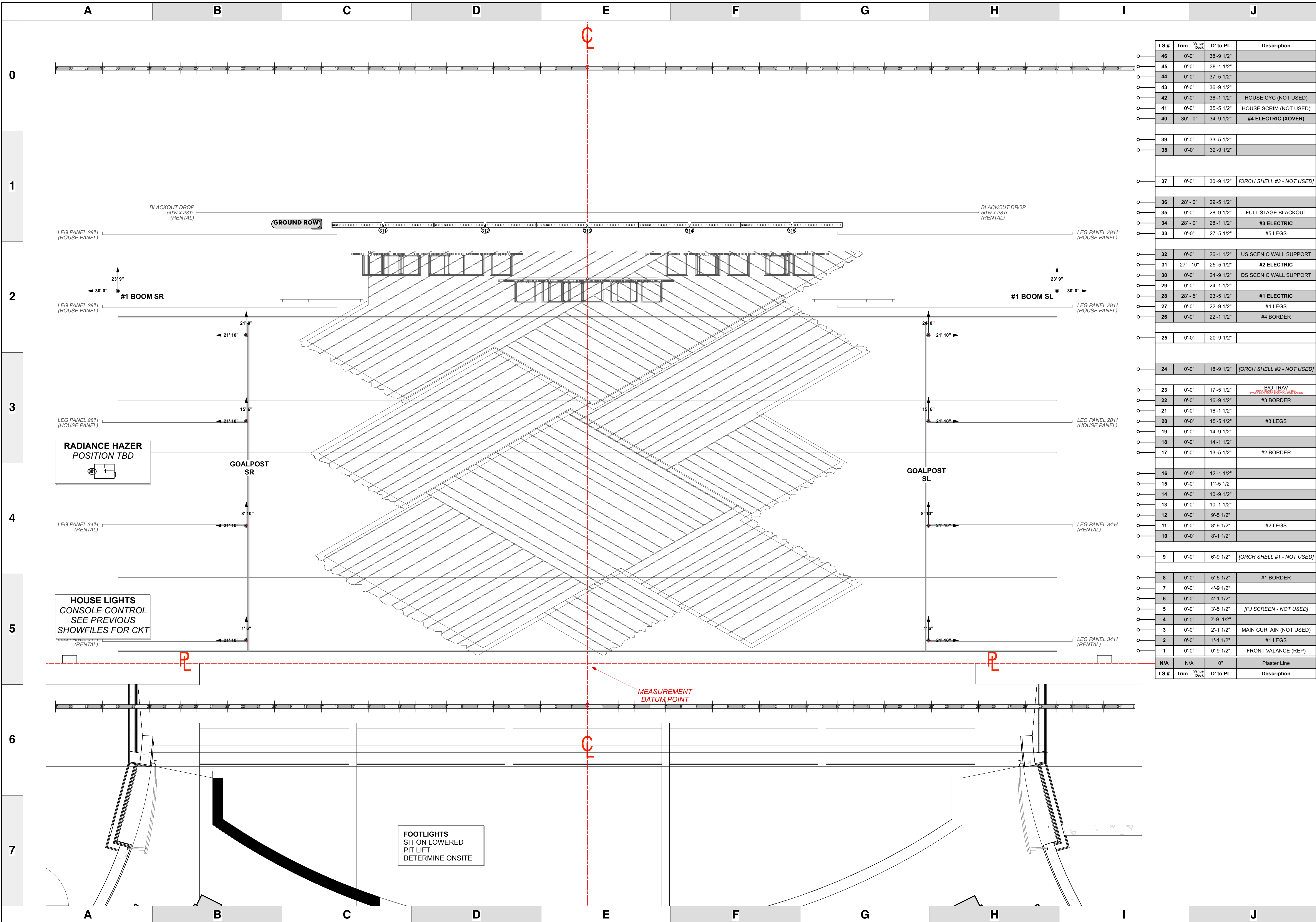
PRODUCTION STAFF

DIRECTOR: KAMILAH LONG
 LIGHTING DESIGNER: MIKE WOOD
 ASSOC LIGHTING DESIGNER: ABBY MAY
 ASST LIGHTING DESIGNER: MARCELA BARBEAU
 PROGRAMMER: HARRISON FREN
 PROD. ELEC: BARRETT ROBERTS
 ASST. PROD. ELEC: MATTHEW PEDDIE

- THE BYERS THEATRE -
 SANDY SPRINGS, GA. MAY 2022

SCALE: 3/8" = 1'
 PG SIZE: ARCH D
 DWG NUMBER: 3 OF 6

LIGHT PLOT
 GOALPOSTS & BOOMS



LS #	Trim	Venue Deck	D' to PL	Description
46	0'-0"		38'-9 1/2"	
44	0'-0"		37'-5 1/2"	
43	0'-0"		36'-9 1/2"	
42	0'-0"		36'-1 1/2"	HOUSE CYC (NOT USED)
41	0'-0"		35'-5 1/2"	HOUSE SCRIM (NOT USED)
40	30'-0"		34'-9 1/2"	#4 ELECTRIC (XOVER)
39	0'-0"		33'-5 1/2"	
38	0'-0"		32'-9 1/2"	
37	0'-0"		30'-9 1/2"	[ORCH SHELL #3 - NOT USED]
36	28'-0"		29'-5 1/2"	
35	0'-0"		28'-9 1/2"	FULL STAGE BLACKOUT
34	28'-0"		28'-1 1/2"	#3 ELECTRIC
33	0'-0"		27'-5 1/2"	#5 LEGS
32	0'-0"		26'-1 1/2"	US SCENIC WALL SUPPORT
31	27'-10"		25'-5 1/2"	#2 ELECTRIC
30	0'-0"		24'-9 1/2"	DS SCENIC WALL SUPPORT
29	0'-0"		24'-1 1/2"	
28	28'-5"		23'-5 1/2"	#1 ELECTRIC
27	0'-0"		22'-9 1/2"	#4 LEGS
26	0'-0"		22'-1 1/2"	#4 BORDER
25	0'-0"		20'-9 1/2"	
24	0'-0"		18'-9 1/2"	[ORCH SHELL #2 - NOT USED]
23	0'-0"		17'-5 1/2"	B/O TRAY
22	0'-0"		16'-9 1/2"	#3 BORDER
21	0'-0"		16'-1 1/2"	
20	0'-0"		15'-5 1/2"	#3 LEGS
19	0'-0"		14'-9 1/2"	
18	0'-0"		14'-1 1/2"	
17	0'-0"		13'-5 1/2"	#2 BORDER
16	0'-0"		12'-1 1/2"	
15	0'-0"		11'-5 1/2"	
14	0'-0"		10'-9 1/2"	
13	0'-0"		10'-1 1/2"	
12	0'-0"		9'-5 1/2"	
11	0'-0"		8'-9 1/2"	#2 LEGS
10	0'-0"		8'-1 1/2"	
9	0'-0"		6'-9 1/2"	[ORCH SHELL #1 - NOT USED]
8	0'-0"		5'-5 1/2"	#1 BORDER
7	0'-0"		4'-9 1/2"	
6	0'-0"		4'-1 1/2"	
5	0'-0"		3'-5 1/2"	[PJ SCREEN - NOT USED]
4	0'-0"		2'-9 1/2"	
3	0'-0"		2'-1 1/2"	MAIN CURTAIN (NOT USED)
2	0'-0"		1'-1 1/2"	#1 LEGS
1	0'-0"		0'-9 1/2"	FRONT VALANCE (REP)
N/A	N/A		0"	Plaster Line
LS #	Trim	Venue Deck	D' to PL	Description

KEY TO INSTRUMENTATION

	Robe BMFL Followspot	3
	Martin Mac Viper Performance	17
	Martin Mac Viper Profile	9
	High End SolaSpot 1000	12
	High End SolaFrame Theatre	6
	CHAUVET R2 WASH	18
	ETC Source-4 10"	5
	ETC S4-14" LED Tungsten	17
	ETC S4-14" LED Lustr	6
	ETC S4-19" LED Lustr	18
	ETC S4-26" LED Lustr	26
	ETC S4-36" LED Lustr	26
	Prolights EclipseFS 50deg	2
	Prolights EclipseFS 26deg	4
	ETC S4 Fresnel Lustr	8
	ETC ColorSource PAR-MR	37
	ETC S4-PAR (MFL)	10
	ETC S4-PAR (WFL)	12
	ETC ColorSource Linear 4 Deep Blue	10
	6.25in Top Hat	42
	7.5in Concentric Ring	12
	7.5in Top Hat	16

LEGEND

ABBREVIATIONS:
 R = Rosco
 G = GAIM
 A = Apollo
 LS = Line Set
 GP = Ground Plan
 LX = Electric
 TD = Tech. Direct.
 LD = Lighting Design

FOCUS COLOR: FOC CLR
 LENS: LENS
 TEMPLATE: TEMPLATE
 UNIT #: UNIT #
 ENGINE TYPE: ENGINE TYPE
 CHANNEL #: CHANNEL #



MW LIGHTING LD# 10574
 www.mwlighting.com

REVISION HISTORY

NO.	REVISION	DATE	BY
A01	SCENIC LAYOUT / DOC PREP	08 MAR 22	MTW
A02	REVISED PLOT	14 MAR 22	MTW
A03	PRELIM / SHIP BID	29 MAR 22	MTW
T01	SHIP PREP / BUILD	02 APR 22	MTW
R001	BAND CHANGES	13 APR 22	MTW
001C	LOAD IN / GSSO CHANGES	29 APR 22	AGM

THE COLOR PURPLE

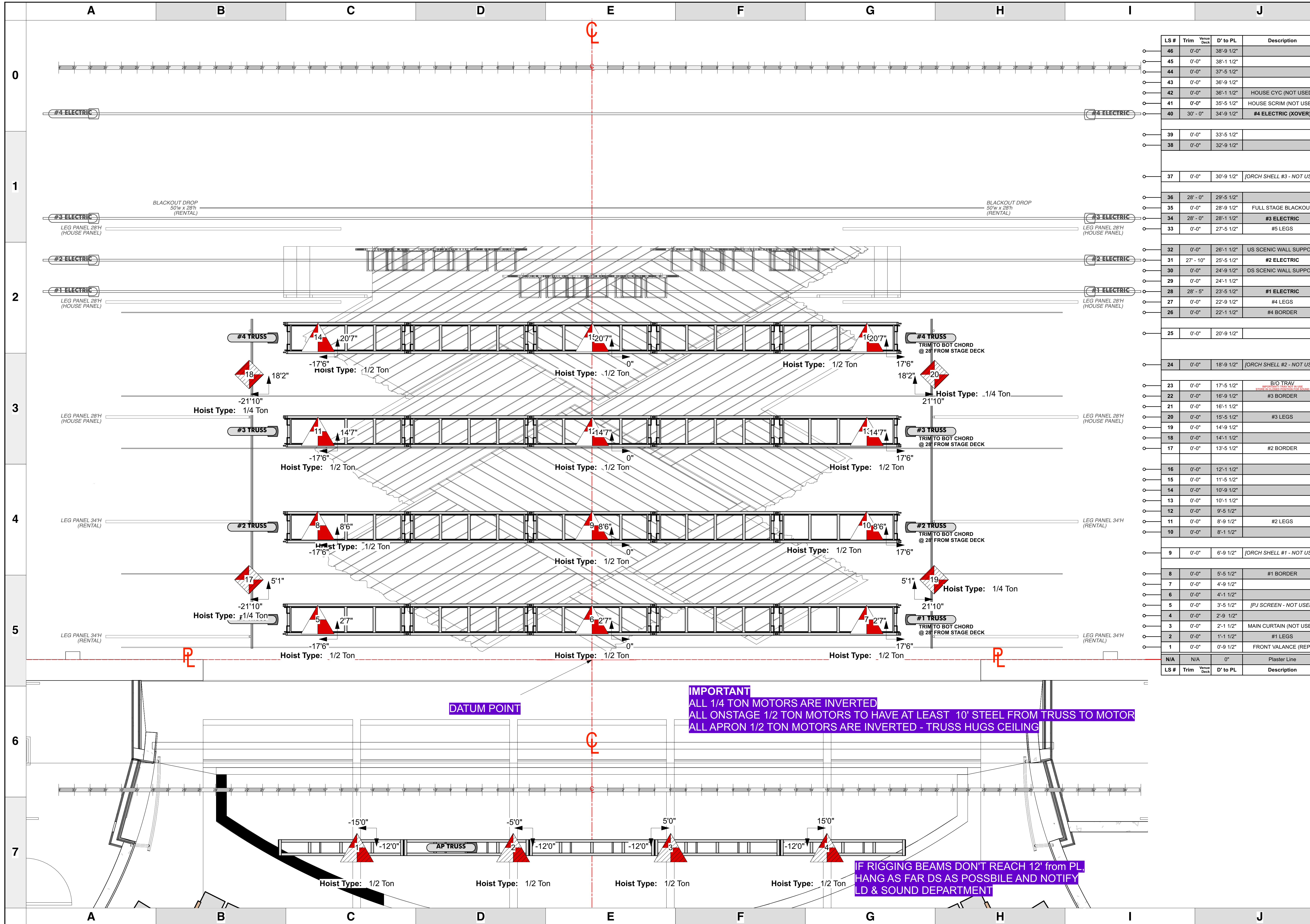
PRODUCTION STAFF
 DIRECTOR: KAMILAH LONG
 LIGHTING DESIGNER: MIKE WOOD
 ASSOC LIGHTING DESIGNER: ABBY MAY
 ASST. LIGHTING DESIGNER: MARCELLA BARBEAU
 PROGRAMMER: HARRISON FRENI
 PROD. ELEC: BARRETT ROBERTS
 ASST. PROD. ELEC: MATTHEW PEDDIE
 - THE BYERS THEATRE -
 SANDY SPRINGS, GA - MAY 2022

SCALE: 3/8" = 1'
 UNLESS OTHERWISE NOTED

PG SIZE: ARCH D

DWG NUMBER: **4** OF 6

LIGHT PLOT
 DECK / FLOOR MOUNT



LS #	Trim	Venue Deck	D' to PL	Description
46	0'-0"		38'-9 1/2"	
45	0'-0"		38'-1 1/2"	
44	0'-0"		37'-5 1/2"	
43	0'-0"		36'-9 1/2"	
42	0'-0"		36'-1 1/2"	HOUSE CYC (NOT USED)
41	0'-0"		35'-5 1/2"	HOUSE SCRIM (NOT USED)
40	30'-0"		34'-9 1/2"	#4 ELECTRIC (XOVER)
39	0'-0"		33'-5 1/2"	
38	0'-0"		32'-9 1/2"	
37	0'-0"		30'-9 1/2"	[ORCH SHELL #3 - NOT USED]
36	28'-0"		29'-5 1/2"	
35	0'-0"		28'-9 1/2"	FULL STAGE BLACKOUT
34	28'-0"		28'-1 1/2"	#3 ELECTRIC
33	0'-0"		27'-5 1/2"	#5 LEGS
32	0'-0"		26'-1 1/2"	US SCENIC WALL SUPPORT
31	27'-10"		25'-5 1/2"	#2 ELECTRIC
30	0'-0"		24'-9 1/2"	DS SCENIC WALL SUPPORT
29	0'-0"		24'-1 1/2"	
28	28'-5"		23'-5 1/2"	#1 ELECTRIC
27	0'-0"		22'-9 1/2"	#4 LEGS
26	0'-0"		22'-1 1/2"	#4 BORDER
25	0'-0"		20'-9 1/2"	
24	0'-0"		18'-9 1/2"	[ORCH SHELL #2 - NOT USED]
23	0'-0"		17'-5 1/2"	B/O TRAV
22	0'-0"		16'-9 1/2"	#3 BORDER
21	0'-0"		16'-1 1/2"	
20	0'-0"		15'-5 1/2"	#3 LEGS
19	0'-0"		14'-9 1/2"	
18	0'-0"		14'-1 1/2"	
17	0'-0"		13'-5 1/2"	#2 BORDER
16	0'-0"		12'-1 1/2"	
15	0'-0"		11'-5 1/2"	
13	0'-0"		10'-9 1/2"	
12	0'-0"		9'-5 1/2"	
11	0'-0"		8'-9 1/2"	#2 LEGS
10	0'-0"		8'-1 1/2"	
9	0'-0"		6'-9 1/2"	[ORCH SHELL #1 - NOT USED]
8	0'-0"		5'-5 1/2"	#1 BORDER
7	0'-0"		4'-9 1/2"	
6	0'-0"		4'-1 1/2"	
5	0'-0"		3'-5 1/2"	[PJ SCREEN - NOT USED]
4	0'-0"		2'-9 1/2"	
3	0'-0"		2'-1 1/2"	MAIN CURTAIN (NOT USED)
2	0'-0"		1'-1 1/2"	#1 LEGS
1	0'-0"		0'-9 1/2"	FRONT VALANCE (REP)
N/A	N/A		0"	Plaster Line

KEY TO INSTRUMENTATION

	Robe BMFL Followspot	3
	Martin Mac Viper Performance	17
	Martin Mac Viper Profile	9
	High End SolaSpot 1000	12
	High End SolaFrame Theatre	6
	CHAUVET R2 WASH	18
	ETC Source-4 10"	5
	ETC S4-14" LED Tungsten	17
	ETC S4-14" LED Lustr	6
	ETC S4-19" LED Lustr	18
	ETC S4-26" LED Lustr	26
	ETC S4-36" LED Lustr	26
	Prolights EclipseFS 50deg	2
	Prolights EclipseFS 26deg	4
	ETC S4 Fresnel Lustr	8
	ETC ColorSource PAR-MR	37
	ETC S4-PAR (MFL)	10
	ETC S4-PAR (WFL)	12
	ETC ColorSource Linear 4 Deep Blue	10
	6.25in Top Hat	42
	7.5in Concentric Ring	12
	7.5in Top Hat	16

LEGEND

ABBREVIATIONS:
 R = Rosco
 G = GAM
 A = Apollo
 LS = Line Set
 GP = Ground Plan
 LX = Tech. Direct.
 LD = Lighting Design

FOCUS COLOR
 LENS
 TEMPLATE
 UNIT #
 ENGINE TYPE
 CHANNEL #



MW LIGHTING LD# 10574
 www.mwlighting.com

REVISION HISTORY

NO.	REVISION	DATE	BY
A01	SCENIC LAYOUT / DOC PREP	08 MAR 22	MMW
A02	REVISION	14 MAR 22	MMW
A03	PRELIM / SHIP BLD	29 MAR 22	MMW
T01	SHIP PREP / BUILD	12 APR 22	MMW
R003	SCENIC CHANGES	13 APR 22	MMW
SCENIC	LOAD IN / GSSO CHANGES	25 APR 22	AGM

THE COLOR PURPLE

PRODUCTION STAFF

DIRECTOR	KAMILAH LONG
LIGHTING DESIGNER	MIKE WOOD
ASSOC LIGHTING DESIGNER	ABBY MAY
ASST LIGHTING DESIGNER	MARCELLA BARBEAU
PROGRAMMER	HARRISON FRENI
PROD. ELEC	BARRETT ROBERTS
ASST. PROD. ELEC	MATTHEW PEDDIE

- THE BYERS THEATRE -
 SANDY SPRINGS, GA - MAY 2022

SCALE 3/8" = 1'
 UNLESS OTHERWISE NOTED

PG SIZE ARCH D

DWG NUMBER **5** OF 6

MOTOR PLOT
 OVER STAGE

IMPORTANT
 ALL 1/4 TON MOTORS ARE INVERTED
 ALL ONSTAGE 1/2 TON MOTORS TO HAVE AT LEAST 10' STEEL FROM TRUSS TO MOTOR
 ALL APRON 1/2 TON MOTORS ARE INVERTED - TRUSS HUGS CEILING

IF RIGGING BEAMS DON'T REACH 12' FROM PL,
 HANG AS FAR DS AS POSSIBLE AND NOTIFY
 LD & SOUND DEPARTMENT

DATUM POINT

