

LS #	Trim	Qty	D' to PL	Description
46	0-0"	38-9 1/2"		MOUNTAIN BACKDROP
45	27-0"	38-1 1/2"		#5 ELECTRIC
44	0-0"	37-5 1/2"		LEGS #5
43	0-0"	36-9 1/2"		BLACK BORDER
42	0-0"	36-3 1/2"		BLACK SCRM
41	0-0"	35-5 1/2"		PROFILE DROP
40	0-0"	34-9 1/2"		VON TRAPP WINDOWS
39	0-0"	33-5 1/2"		HY & SHUTTERS
38	30-0"	32-9 1/2"		#4 ELECTRIC
37	0-0"	30-9 1/2"		JORCH SHELL #3 - NOT USED
36	0-0"	29-5 1/2"		ROSE WINDOW
35	0-0"	28-9 1/2"		TREE TRAVELERS
34	0-0"	28-1 1/2"		LEGS #4 SR
33	0-0"	27-5 1/2"		LEGS #4 SL
32	27-0"	26-1 1/2"		#2 SOUND MONITORS
31	27-0"	25-5 1/2"		#3 ELECTRIC
30	0-0"	24-9 1/2"		OPEN
29	0-0"	24-1 1/2"		GATES HANGER
28	0-0"	23-5 1/2"		LEGS #3 SL
27	0-0"	22-9 1/2"		LEGS #3 SR
26	0-0"	22-1 1/2"		BLACK BORDER (REP)
25	0-0"	20-9 1/2"		CHANDELIER
24	0-0"	18-9 1/2"		JORCH SHELL #2 - NOT USED
23	0-0"	17-5 1/2"		MIDSTAGE BLACKOUT (REP)
22	0-0"	16-9 1/2"		MIDSTAGE MOUNTAIN SCRM
21	0-0"	16-1 1/2"		OPEN
20	29-0"	15-5 1/2"		#2 ELECTRIC
19	0-0"	14-9 1/2"		OPEN
18	0-0"	14-1 1/2"		ABBEY WALL
17	0-0"	13-5 1/2"		LEGS #2
16	0-0"	12-1 1/2"		COLUMN TRAVELERS
15	0-0"	11-5 1/2"		OPEN
14	0-0"	10-9 1/2"		MARIA BEDROOM
13	0-0"	10-1 1/2"		OPEN
12	0-0"	9-5 1/2"		ARCH TRAVELERS
11	0-0"	8-9 1/2"		OPEN
10	29-0"	8-1 1/2"		#1 ELECTRIC
9	0-0"	6-9 1/2"		JORCH SHELL #1 - NOT USED
8	27-0"	5-5 1/2"		#1 SOUND MONITORS
7	0-0"	4-9 1/2"		LEGS #1 (SHOW PORTAL)
6	0-0"	4-1 1/2"		OPEN
5	0-0"	3-5 1/2"		PU SCREEN - NOT USED
4	0-0"	2-9 1/2"		OPEN
3	0-0"	2-1 1/2"		MAIN CURTAIN (REP)
2	0-0"	1-1 1/2"		NAZI BANNERS
1	0-0"	0-9 1/2"		FRONT VALANCE (REP)
N/A	N/A	0"		Passer Line
LS #	Trim	Qty	D' to PL	Description

KEY TO INSTRUMENTATION

- SolaSpot 1000 12
- SolaFrame Theatre 6
- Elation Artiste Picasso 5
- Robe BMFL Followspot 3
- CHAUVET R2 WASH 22
-
-
-
-
-
-
-
-
-
-
-
-
-
-

GENERAL NOTES

LEGEND

ABBREVIATIONS:
 R = Rosco
 G = GAM
 A = Apollo
 LS = Line Set
 GP = Ground Plan
 LX = Electric
 TD = Tech. Direct.
 LD = Lighting Desgr.

FOCUS COLOR
 LENS
 TEMPLATE
 UNIT #
 CHANNEL #

REVISION HISTORY

NO.	REVISION	DATE	BY
A01	SCENIC LAYOUT / DOC PREP	22 JULY 21	DBT
A02	REVISED PLOT	12 AUGUST 21	PGM
B01	PLOT NOTES / ADDED UNITS	08 AUGUST 21	AGM
B02	REVISED PLOT	12 AUGUST 21	PGM
B03c	ADDED PRACTICALS	26 AUGUST 21	AGM

THE SOUND OF MUSIC

PRODUCTION STAFF

DIRECTOR SHALER HENSLEY
 ASSOC DIR/CHOREO CINDY MORA REISER
 LIGHTING DESIGNER MIKE WOOD
 ASSOC LD/PROGRAMMER DALTON HAMILTON
 ASSOC LIGHTING DSGNR ABBY MAY
 PROD. ELEC OLIVIA DONIPHAN
 SCENIC DESIGNER ADAM KOCH

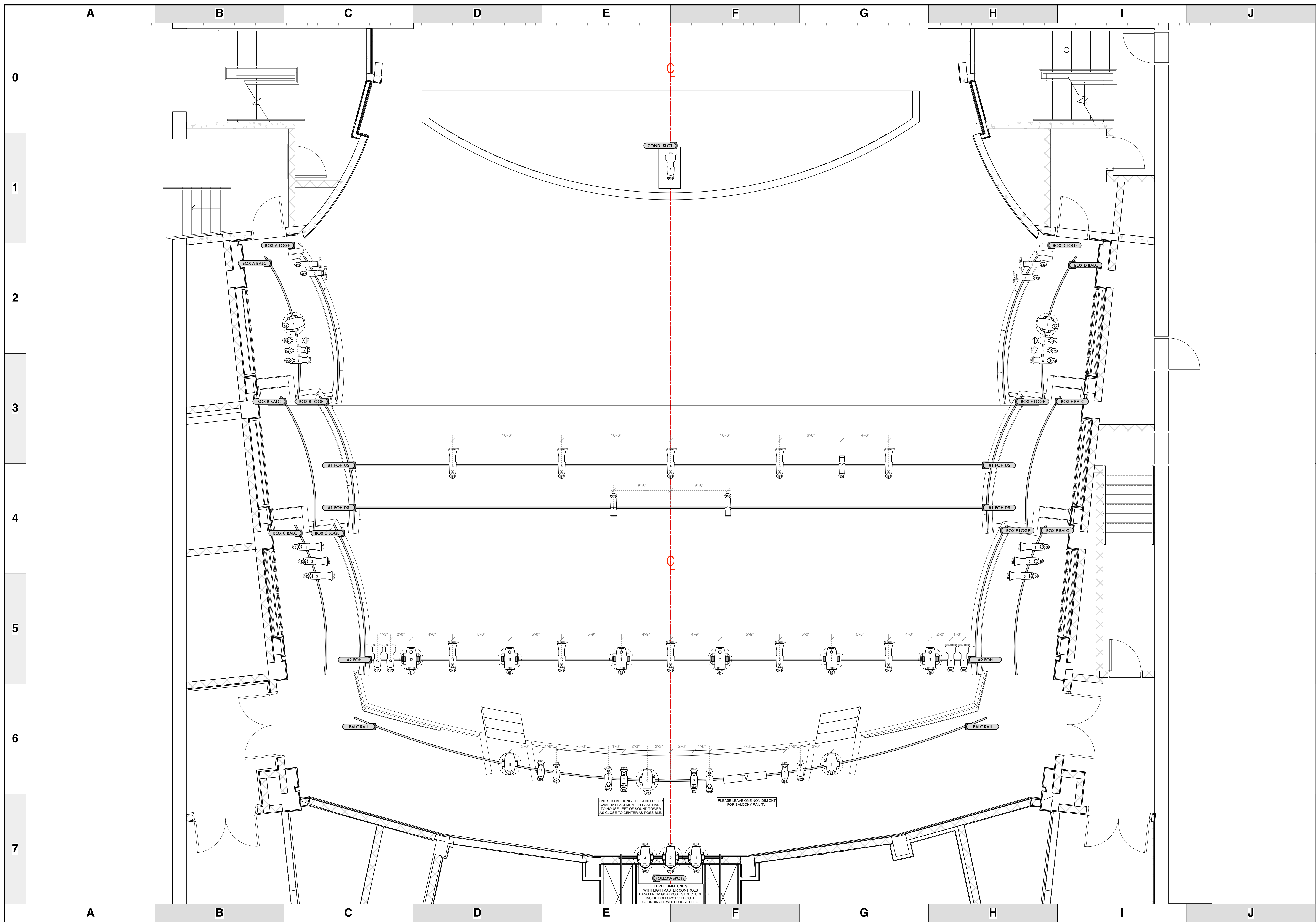
- THE BYERS THEATRE -
 SANDY SPRINGS, GA - SEPTEMBER 2021

SCALE 1/4" = 1'
 UNLESS OTHERWISE NOTED

PG SIZE ARCH D

DWG NUMBER **1**
 OF 7

LIGHT PLOT
 OVER STAGE



KEY TO INSTRUMENTATION

	SolaSpot 1000	12
	SolaFrame Theatre	6
	Elation Artiste Picasso	5
	Robe BMFL Followspot	3
	CHAUVET R2 WASH	22
	ETC Source-4 10°	5
	ETC Source-4 19°	4
	ETC S4-14° LED Tungs	10
	ETC S4-50° LED Tungs	4
	ETC S4-14° LED Lustr	6
	ETC S4-19° LED Lustr	28
	ETC S4-26° LED Lustr	24
	ETC S4-36° LED Lustr	24
	Ovation E-260 WW 36	5
	Ovation E-260 WW 50°	2
	ETC ColorSource PAR-MR	19
	ETC ColorSource PAR-WO	6
	ETC S4 Fresnel Lustr	6
	ETC ColorSource Linear 4 Deep Blue	14

GENERAL NOTES

LEGEND

ABBREVIATIONS: R = Rosco, G = GAM, A = Apollo, LS = Line Set, GP = Ground Plan, TD = Tech. Direct, LD = Lighting Design

FOCUS COLOR, LENS, TEMPLATE, UNIT #, CHANNEL #

REVISION HISTORY

NO.	REVISION	DATE	BY
A01	SCENIC LAYOUT / DOC PREP	22 JULY 21	DBRT
A02	REVISED PLOT	12 AUGUST 21	PGMT
B01	PLOT NOTES / ADDED UNITS	08 AUGUST 21	PGMT
B02	REVISED PLOT	12 AUGUST 21	PGMT
B03c	ADDED PRACTICALS	26 AUGUST 21	AGMT

THE SOUND OF MUSIC

PRODUCTION STAFF

DIRECTOR: SHULER HENSLEY
 ASSOC DIR/CHOREO: CINDY MORA REISER
 LIGHTING DESIGNER: MIKE WOOD
 ASSOC LIGHTING DESIGNER: DALTON HAMILTON
 ASSOC LIGHTING DESIGNER: ABBY MAY
 PROD. ELEC.: OLIVIA DONIPHAN
 SCENIC DESIGNER: ADAM KOCH

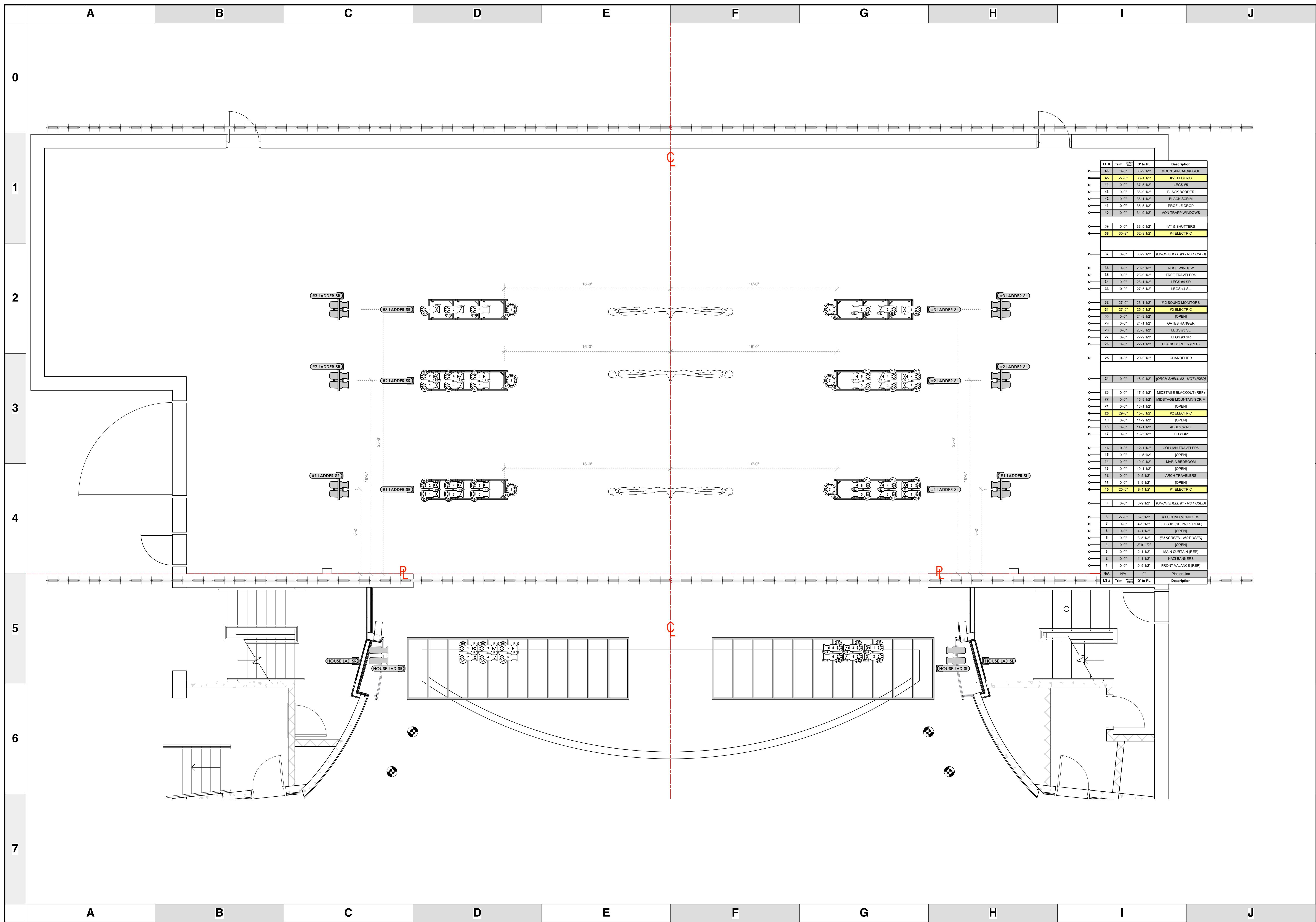
- THE BYERS THEATRE -
 SANDY SPRINGS, GA - SEPTEMBER 2021

SCALE: 1/4" = 1'
 UNLESS OTHERWISE NOTED

PG SIZE: ARCH D

DWG NUMBER: **2** OF 7

LIGHT PLOT
 FOH



LS #	Trim	Size	D' to PL	Description
46	0-0"	38-9 1/2"		MOUNTAIN BACKDROP
45	27-0"	38-1 1/2"		#5 ELECTRIC
44	0-0"	37-5 1/2"		LEGS #5
43	0-0"	36-9 1/2"		BLACK BORDER
42	0-0"	36-3 1/2"		BLACK SCRM
41	0-0"	35-5 1/2"		PROFILE DROP
40	0-0"	34-9 1/2"		VON TRAPP WINDOWS
39	0-0"	33-5 1/2"		HY & SHUTTERS
38	30-0"	32-9 1/2"		#4 ELECTRIC
37	0-0"	30-9 1/2"		JORCH SHELL #3 - NOT USED
36	0-0"	29-5 1/2"		ROSE WINDOW
35	0-0"	28-9 1/2"		TREE TRAVELERS
34	0-0"	28-1 1/2"		LEGS #4 SR
33	0-0"	27-5 1/2"		LEGS #4 SL
32	27-0"	26-1 1/2"		#2 SOUND MONITORS
31	27-0"	25-5 1/2"		#3 ELECTRIC
30	0-0"	24-9 1/2"		OPEN
29	0-0"	24-1 1/2"		GATES HANGER
28	0-0"	23-5 1/2"		LEGS #3 SL
27	0-0"	22-9 1/2"		LEGS #3 SR
26	0-0"	22-1 1/2"		BLACK BORDER (REP)
25	0-0"	20-9 1/2"		CHANDELIER
24	0-0"	18-9 1/2"		JORCH SHELL #2 - NOT USED
23	0-0"	17-5 1/2"		MIDSTAGE BLACKOUT (REP)
22	0-0"	16-9 1/2"		MIDSTAGE MOUNTAIN SCRM
21	0-0"	16-1 1/2"		OPEN
20	29-0"	15-5 1/2"		#2 ELECTRIC
19	0-0"	14-9 1/2"		OPEN
18	0-0"	14-1 1/2"		ABBEY WALL
17	0-0"	13-5 1/2"		LEGS #2
16	0-0"	12-1 1/2"		COLUMN TRAVELERS
15	0-0"	11-5 1/2"		OPEN
14	0-0"	10-9 1/2"		MARIA BEDROOM
13	0-0"	10-1 1/2"		OPEN
12	0-0"	9-5 1/2"		ARCH TRAVELERS
11	0-0"	8-9 1/2"		OPEN
10	25-0"	8-1 1/2"		#1 ELECTRIC
9	0-0"	6-9 1/2"		JORCH SHELL #1 - NOT USED
8	27-0"	5-5 1/2"		#1 SOUND MONITORS
7	0-0"	4-9 1/2"		LEGS #1 (SHOW PORTAL)
6	0-0"	4-1 1/2"		OPEN
5	0-0"	3-5 1/2"		(PU SCREEN - NOT USED)
4	0-0"	2-9 1/2"		OPEN
3	0-0"	2-1 1/2"		MAIN CURTAIN (REP)
2	0-0"	1-1 1/2"		NAZI BANNERS
1	0-0"	0-9 1/2"		FRONT VALANCE (REP)
N/A	N/A	0"		Plaster Line

KEY TO INSTRUMENTATION

- SolaSpot 1000 12
- SolaFrame Theatre 6
- Elation Artiste Picasso 5
- Robe BMFL Followspot 3
- CHAUVET R2 WASH 22
- ETC Source-4 10" 5
- ETC Source-4 19" 4
- ETC S4-14" LED Tungs 10
- ETC S4-50" LED Tungs 4
- ETC S4-14" LED Lustr 6
- ETC S4-19" LED Lustr 28
- ETC S4-26" LED Lustr 24
- ETC S4-36" LED Lustr 24
- Ovation E-260 WW 36
- Ovation E-260 WW 50" 2
- ETC ColorSource PAR-MR 19
- ETC ColorSource PAR-WO 6
- ETC S4 Fresnel Lustr 6
- ETC ColorSource Linear 4 Deep Blue 14

GENERAL NOTES

LEGEND

ABBREVIATIONS:
 R = Rosco
 A = Apollo
 LS = Line Set
 GP = Ground Plan
 LX = Electric
 TD = Tech. Direct.
 LD = Lighting Desgr.

FOCUS COLOR
 LENS
 TEMPLATE
 UNIT #
 CHANNEL #

REVISION HISTORY

NO.	REVISION	DATE	BY
A01	SCENIC LAYOUT / DOC PREP	22 JULY 21	DBT
A02	REVISED PLOT	12 AUGUST 21	PGT
B01	PLOT NOTES / ADDED UNITS	06 AUGUST 21	AGM
B02	REVISED PRACTICALS	12 AUGUST 21	PGT
B03c	ADDED PRACTICALS	26 AUGUST 21	AGM

THE SOUND OF MUSIC

PRODUCTION STAFF

DIRECTOR: SHALER HENSLEY
 ASSOC DIR/CHOREO: CINDY MORA REISER
 LIGHTING DESIGNER: MIKE WOOD
 ASSOC LD/PROGRAMMER: DALTON HAMILTON
 ASSOC LIGHTING DSGNR: ABBY MAY
 PROD. ELEC: OLIVIA DONIPHAN
 SCENIC DESIGNER: ADAM KOCH

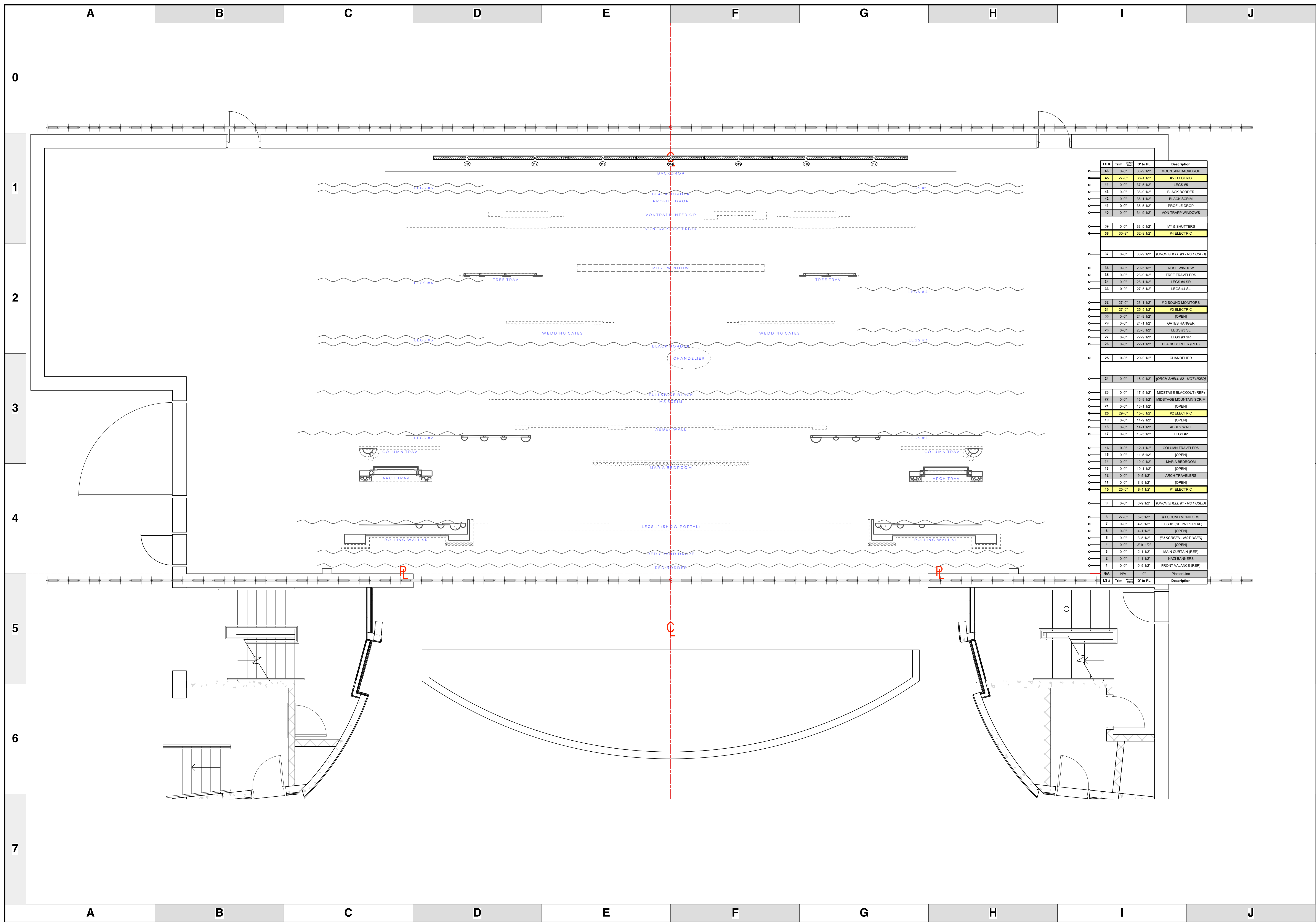
- THE BYERS THEATRE -
 SANDY SPRINGS, GA - SEPTEMBER 2021

SCALE 3/8" = 1'
 UNLESS OTHERWISE NOTED

PG SIZE ARCH D

DWG NUMBER **3** OF 7

LIGHT PLOT
 LADDERS & SIDE LIGHT



LS #	Trim	Qty	D' to PL	Description
46	0-0"	38-0 1/2"		MOUNTAIN BACKDROP
45	27-0"	38-1 1/2"		#5 ELECTRIC
44	0-0"	37-5 1/2"		LEGS #5
43	0-0"	36-9 1/2"		BLACK BORDER
42	0-0"	36-1 1/2"		BLACK SCRM
41	0-0"	35-5 1/2"		PROFILE DROP
40	0-0"	34-9 1/2"		VON TRAPP WINDOWS
39	0-0"	33-5 1/2"		AVY & SHUTTERS
38	30-0"	32-9 1/2"		#4 ELECTRIC
37	0-0"	30-9 1/2"		JDRCH SHELL #2 - NOT USED
36	0-0"	29-5 1/2"		ROSE WINDOW
35	0-0"	28-9 1/2"		TREE TRAVELERS
34	0-0"	28-1 1/2"		LEGS #4 SR
33	0-0"	27-5 1/2"		LEGS #4 SL
32	27-0"	26-1 1/2"		#2 SOUND MONITORS
31	27-0"	25-5 1/2"		#3 ELECTRIC
30	0-0"	24-9 1/2"		OPEN
29	0-0"	24-1 1/2"		GATES HANGER
28	0-0"	23-5 1/2"		LEGS #3 SL
27	0-0"	22-9 1/2"		LEGS #3 SR
26	0-0"	22-1 1/2"		BLACK BORDER (REP)
25	0-0"	20-9 1/2"		CHANDELIER
24	0-0"	18-9 1/2"		JDRCH SHELL #2 - NOT USED
23	0-0"	17-5 1/2"		MIDSTAGE BLACKOUT (REP)
22	0-0"	16-9 1/2"		MIDSTAGE MOUNTAIN SCRM
21	0-0"	16-1 1/2"		OPEN
20	29-0"	15-5 1/2"		#2 ELECTRIC
19	0-0"	14-9 1/2"		OPEN
18	0-0"	14-1 1/2"		ABBAY WALL
17	0-0"	13-5 1/2"		LEGS #2
16	0-0"	12-1 1/2"		COLUMN TRAVELERS
15	0-0"	11-5 1/2"		OPEN
14	0-0"	10-9 1/2"		MARRIAGE BEDROOM
13	0-0"	10-1 1/2"		OPEN
12	0-0"	9-5 1/2"		ARCH TRAVELERS
11	0-0"	8-9 1/2"		OPEN
10	29-0"	8-1 1/2"		#1 ELECTRIC
9	0-0"	6-9 1/2"		JDRCH SHELL #1 - NOT USED
8	27-0"	5-5 1/2"		#1 SOUND MONITORS
7	0-0"	4-9 1/2"		LEGS #1 (SHOW PORTAL)
6	0-0"	4-1 1/2"		OPEN
5	0-0"	3-5 1/2"		(PJ SCREEN - NOT USED)
4	0-0"	2-9 1/2"		OPEN
3	0-0"	2-1 1/2"		MAIN CURTAIN (REP)
2	0-0"	1-1 1/2"		NAZI BANNERS
1	0-0"	0-9 1/2"		FRONT VALANCE (REP)
N/A	N/A	0"		Passer Line
LS #	Trim	Qty	D' to PL	Description

KEY TO INSTRUMENTATION		
	SolaSpot 1000	12
	SolaFrame Theatre	6
	Elation Artiste Picasso	5
	Robe BMFL Followspot	3
	CHAUVET R2 WASH	22
	ETC Source-4 10°	5
	ETC Source-4 19°	4
	ETC S4-14° LED Tungs	10
	ETC S4-50° LED Tungs	4
	ETC S4-14° LED Lustr	6
	ETC S4-19° LED Lustr	28
	ETC S4-26° LED Lustr	24
	ETC S4-36° LED Lustr	24
	Ovation E-260 WW 36	5
	Ovation E-260 WW 50°	2
	ETC ColorSource PAR-MR	19
	ETC ColorSource PAR-WO	6
	ETC S4 Fresnel Lustr	6
	ETC ColorSource Linear 4 Deep Blue	14

GENERAL NOTES

LEGEND

ABBREVIATIONS: R = Rosco, G = GAM, A = Apollo, LS = Line Set, GP = Ground Plan, LX = Electric, TD = Tech. Direct, LD = Lighting Desgr.

FOCUS COLOR: FOC CLR

LENS: LENS

TEMPLATE: TEMPLATE

UNIT #: UNIT #

CHANNEL #: CHANNEL #



MW LIGHTING
Nashville, Tennessee, USA

LD# 10574
http://www.mwlighting.com

No warranty is made by the manufacturer for use of the equipment in applications not intended by the manufacturer. The manufacturer shall not be responsible for any damage or injury to persons or property resulting from the use of the equipment in applications not intended by the manufacturer. Always consult a licensed electrician before using any lighting or electrical system. All equipment must be installed by a qualified electrician in accordance with the National Electrical Code.

REVISION HISTORY

NO.	REVISION	DATE	BY
A01	SCENIC LAYOUT / DOC PREP	22 JULY 21	DBT
A02	REVISED PLOT	12 AUGUST 21	PGMT
B01	PLOT NOTES / ADDED UNITS	08 AUGUST 21	PGMT
B02	REVISED PLOT	12 AUGUST 21	PGMT
B03c	ADDED PRACTICALS	26 AUGUST 21	AGMT

THE SOUND OF MUSIC

PRODUCTION STAFF

DIRECTOR: SHALER HENSLEY
 ASSOC DIR/CHOREO: CINDY MORA REISER
 LIGHTING DESIGNER: MIKE WOOD
 ASSOC LD/PROGRAMMER: DALTON HAMILTON
 ASSOC LIGHTING DSGNR: ABBY MAY
 PROD. ELEC: OLIVIA DONIPHAN
 SCENIC DESIGNER: ADAM KOCH

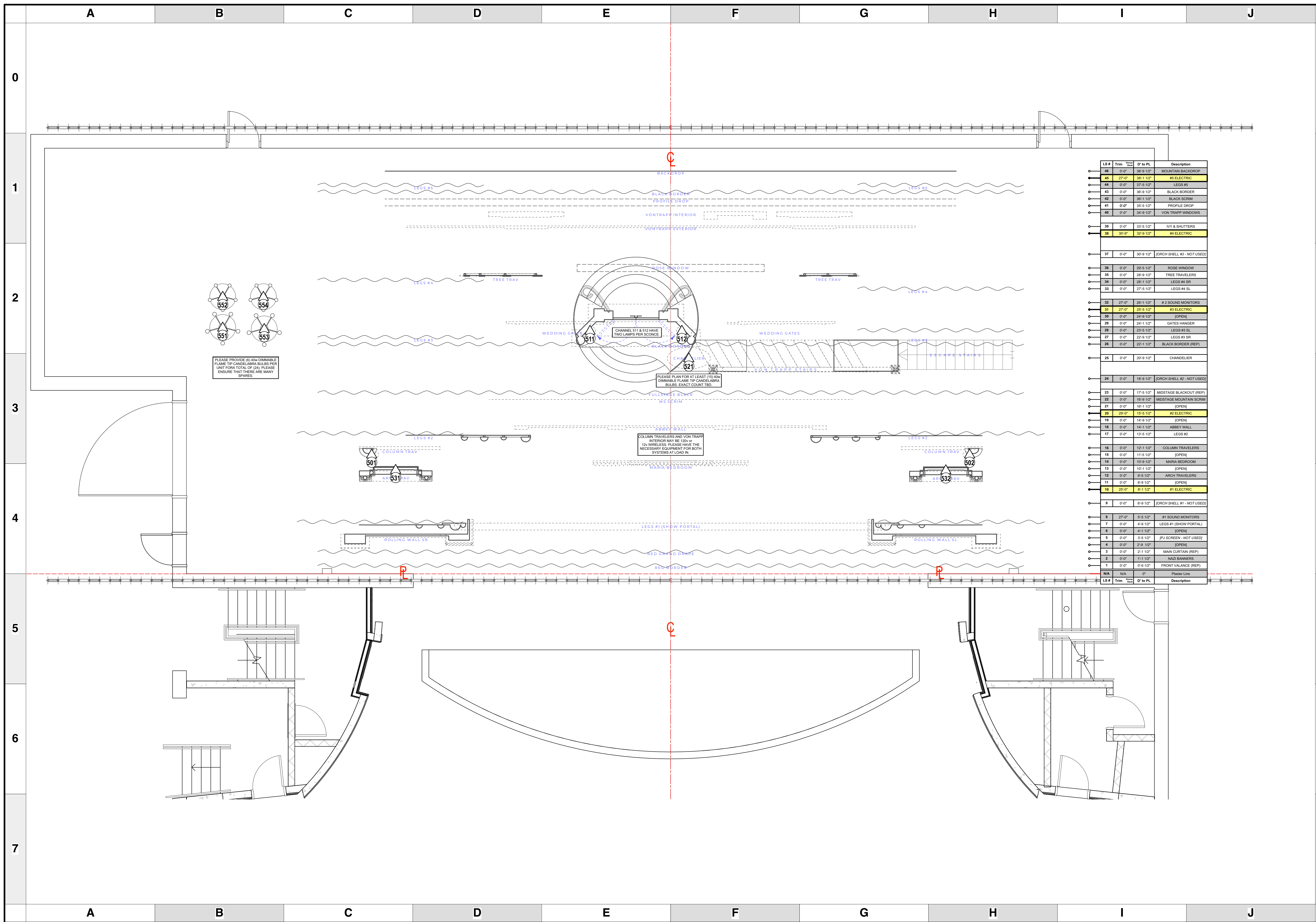
- THE BYERS THEATRE -
SANDY SPRINGS, GA - SEPTEMBER 2021

SCALE: 1/4" = 1'
UNLESS OTHERWISE NOTED

PG SIZE: ARCH D

DWG NUMBER: **4** OF 7

LIGHT PLOT
DECK UNITS



LS #	Trim	Qty	D' to PL	Description
46	0-0"	38-9 1/2"		MOUNTAIN BACKDROP
45	27-0"	38-1 1/2"		#5 ELECTRIC
44	0-0"	37-5 1/2"		LEGS #5
43	0-0"	36-9 1/2"		BLACK BORDER
42	0-0"	35-5 1/2"		BLACK SCRM
41	0-0"	35-5 1/2"		PROFILE DROP
40	0-0"	34-9 1/2"		VON TRAPP WINDOWS
39	0-0"	33-5 1/2"		RY & SHUTTERS
38	30-0"	32-9 1/2"		#4 ELECTRIC
37	0-0"	30-9 1/2"		JDRCH SHELL #3 - NOT USED
36	0-0"	29-5 1/2"		ROSE WINDOW
35	0-0"	28-9 1/2"		TREE TRAVELERS
34	0-0"	28-1 1/2"		LEGS #4 SR
33	0-0"	27-5 1/2"		LEGS #4 SL
32	27-0"	26-1 1/2"		#2 SOUND MONITORS
31	27-0"	25-5 1/2"		#3 ELECTRIC
30	0-0"	24-9 1/2"		OPEN
29	0-0"	24-1 1/2"		GATES HANGER
28	0-0"	23-5 1/2"		LEGS #3 SL
27	0-0"	22-9 1/2"		LEGS #3 SR
26	0-0"	22-1 1/2"		BLACK BORDER (REP)
25	0-0"	20-9 1/2"		CHANDELIER
24	0-0"	18-9 1/2"		JDRCH SHELL #2 - NOT USED
23	0-0"	17-5 1/2"		MIDSTAGE BLACKOUT (REP)
22	0-0"	16-9 1/2"		MIDSTAGE MOUNTAIN SCRM
21	0-0"	16-1 1/2"		OPEN
20	29-0"	15-5 1/2"		#2 ELECTRIC
19	0-0"	14-9 1/2"		OPEN
18	0-0"	14-1 1/2"		ABBAY WALL
17	0-0"	13-5 1/2"		LEGS #2
16	0-0"	12-1 1/2"		COLUMN TRAVELERS
15	0-0"	11-5 1/2"		OPEN
14	0-0"	10-9 1/2"		MARIA BEDROOM
13	0-0"	10-1 1/2"		OPEN
12	0-0"	9-5 1/2"		ARCH TRAVELERS
11	0-0"	8-9 1/2"		OPEN
10	29-0"	8-1 1/2"		#1 ELECTRIC
9	0-0"	6-9 1/2"		JDRCH SHELL #1 - NOT USED
8	27-0"	5-5 1/2"		#1 SOUND MONITORS
7	0-0"	4-9 1/2"		LEGS #1 (SHOW PORTAL)
6	0-0"	4-1 1/2"		OPEN
5	0-0"	3-5 1/2"		(PJ) SCREEN - NOT USED
4	0-0"	2-9 1/2"		OPEN
3	0-0"	2-1 1/2"		MAIN CURTAIN (REP)
2	0-0"	1-1 1/2"		NAZI BANNERS
1	0-0"	0-9 1/2"		FRONT VALANCE (REP)
N/A	N/A	0"		Plaster Line

KEY TO INSTRUMENTATION

- SolaSpot 1000 12
- SolaFrame Theatre 6
- Elation Artiste Picasso 5
- Robe BMFL Followspot 3
- CHAUVET R2 WASH 22
- ETC Source-4 10" 5
- ETC Source-4 19" 4
- ETC S4-14" LED Tungs 10
- ETC S4-50" LED Tungs 4
- ETC S4-14" LED Lustr 6
- ETC S4-19" LED Lustr 28
- ETC S4-26" LED Lustr 24
- ETC S4-36" LED Lustr 24
- Ovation E-260 WW 36
- Ovation E-260 WW 50" 2
- ETC ColorSource PAR-MR 19
- ETC ColorSource PAR-WO 6
- ETC S4 Fresnel Lustr 6
- ETC ColorSource Linear 4 Deep Blue 14

GENERAL NOTES

LEGEND

ABBREVIATIONS: R = Rosco, G = GAM, A = Apollo, LS = Line Set, GP = Ground Plan, LX = Electric, TD = Tech. Direct, LD = Lighting Desgr.

FOCUS COLOR, LENS, TEMPLATE, UNIT #, CHANNEL #

REVISION HISTORY

NO.	REVISION	DATE	BY
A01	SCENIC LAYOUT / DOC PREP	22 JULY 21	DBT
A02	REVISED PLOT	12 AUGUST 21	PGMT
B01	PLOT NOTES / ADDED UNITS	08 AUGUST 21	AGMT
B02	REVISED PRACTICALS	12 AUGUST 21	PGMT
B03c	ADDED PRACTICALS	26 AUGUST 21	AGMT

THE SOUND OF MUSIC

PRODUCTION STAFF

DIRECTOR: SHALER HENSLEY
 ASSOC DIR/CHOREO: CINDY MORA REISER
 LIGHTING DESIGNER: MIKE WOOD
 ASSOC LD/PROGRAMMER: DALTON HAMILTON
 ASSOC LIGHTING DSGNR: ABBY MAY
 PROD. ELEC: OLIVIA DONIPHAN
 SCENIC DESIGNER: ADAM KOCH

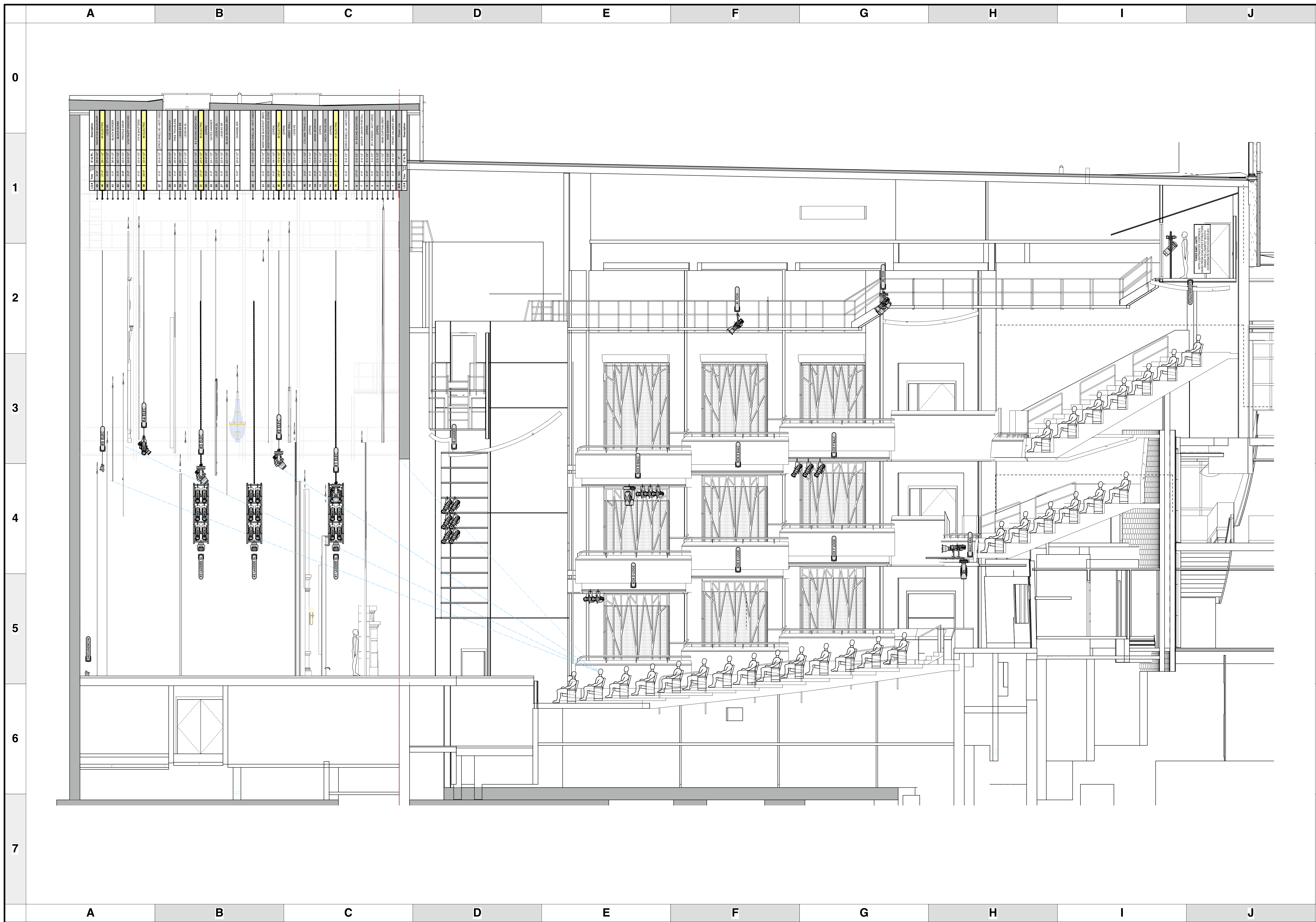
- THE BYERS THEATRE -
 SANDY SPRINGS, GA - SEPTEMBER 2021

SCALE: 3/8"=1'
 UNLESS OTHERWISE NOTED

PG SIZE: ARCH D

DWG NUMBER: **5** OF 7

LIGHT PLOT
 SET MOUNT / PRACTICALS



KEY TO INSTRUMENTATION

- SolaSpot 1000 12
- SolaFrame Theatre 6
- Elation Artiste Picasso 5
- Robe BMFL Followspot 3
- CHAUVET R2 WASH 22
- ETC Source-4 10° 5
- ETC Source-4 19° 4
- ETC S4-14° LED Tungs 10
- ETC S4-50° LED Tungs 4
- ETC S4-14° LED Lustr 6
- ETC S4-19° LED Lustr 28
- ETC S4-26° LED Lustr 24
- ETC S4-36° LED Lustr 24
- Ovation E-260 WW 36 5
- Ovation E-260 WW 50° 2
- ETC ColorSource PAR-MR 19
- ETC ColorSource PAR-WO 6
- ETC S4 Fresnel Lustr 6
- ETC ColorSource Linear 4 Deep Blue 14

GENERAL NOTES

LEGEND

ABBREVIATIONS:
 R = Rosco
 G = GAM
 A = Apollo
 LS = Line Set
 GP = Ground Plan
 LX = Electric
 TD = Tech. Direct.
 LD = Lighting Desgr.

FOCUS COLOR
 LENS
 TEMPLATE
 UNIT #
 CHANNEL #

LD# 10574
 Nashville, Tennessee, USA

REVISION HISTORY

NO.	REVISION	DATE	BY
A01	SCENIC LAYOUT / DOC PREP	22 JULY 21	DBT
A02	REVISED PLOT	12 AUGUST 21	FGST
B01	PLOT NOTES / ADDED UNITS	06 AUGUST 21	AGMT
B02	REVISED PLOT	12 AUGUST 21	FGST
B03c	ADDED PRACTICALS	26 AUGUST 21	AGMT

THE SOUND OF MUSIC

PRODUCTION STAFF

DIRECTOR SHULER HENSLEY
 ASSOC DIR/CHOREO CINDY MORA REISER
 LIGHTING DESIGNER MIKE WOOD
 ASSOC LD/PROGRAMMER DALTON HAMILTON
 ASSOC LIGHTING DSGNR ABBY MAY
 PROD. ELECTRICIAN OLIVIA DONIPHAN
 SCENIC DESIGNER ADAM KOCH

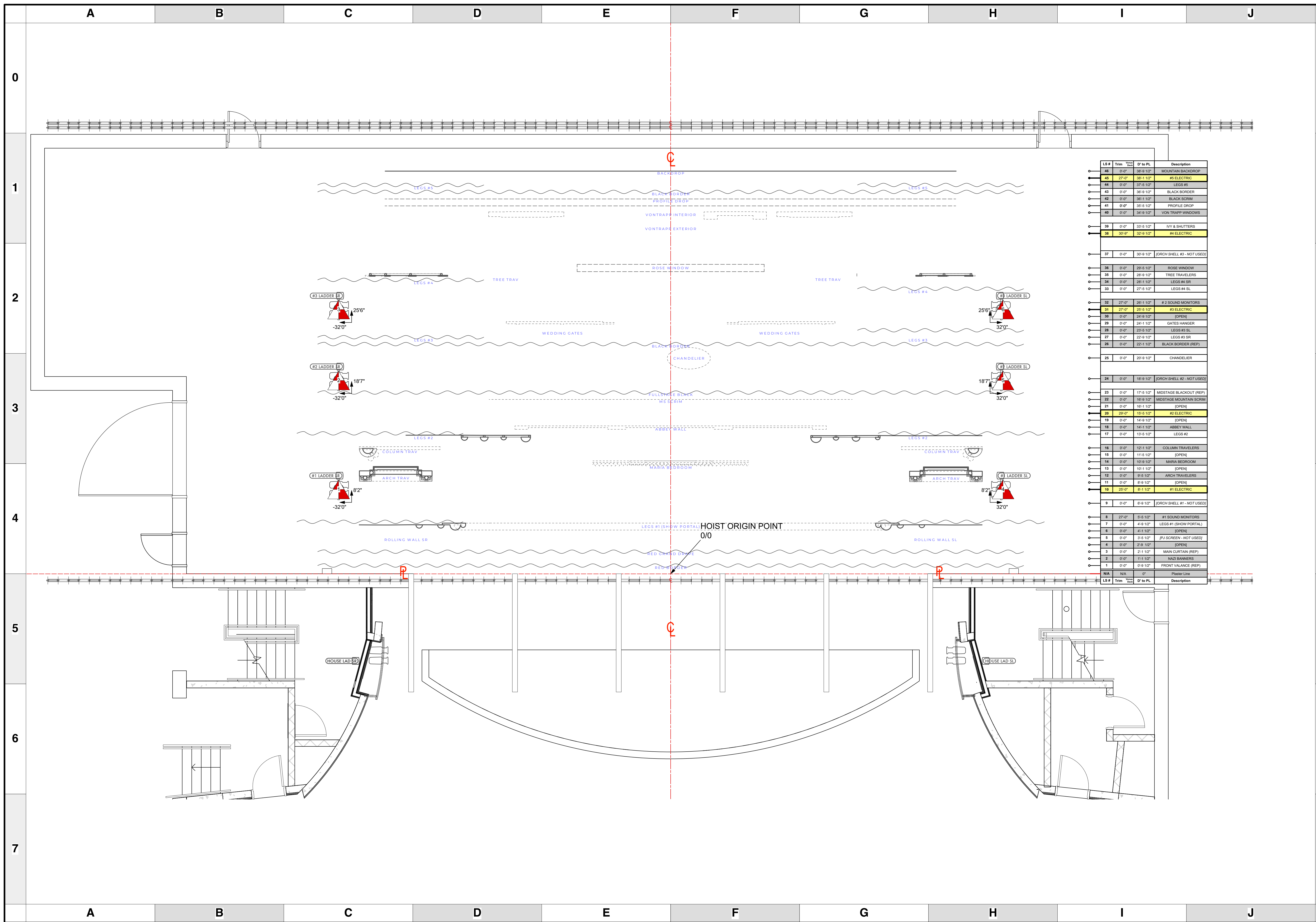
- THE BYERS THEATRE -
 SANDY SPRINGS, GA - SEPTEMBER 2021

SCALE 3/16" = 1'0"
 UNLESS OTHERWISE NOTED

PG SIZE ARCH D

6 OF 7

LIGHT PLOT
 SL SECTION THRU CL



LS #	Trim	Qty	D' to PL	Description
46	0-0"	38-9 1/2"		MOUNTAIN BACKDROP
45	27-0"	38-1 1/2"		#5 ELECTRIC
44	0-0"	37-5 1/2"		LEGS #5
43	0-0"	36-9 1/2"		BLACK BORDER
42	0-0"	36-9 1/2"		BLACK SCRM
41	0-0"	35-5 1/2"		PROFILE DROP
40	0-0"	34-9 1/2"		VON TRAPP WINDOWS
39	0-0"	33-5 1/2"		RVY & SHUTTERS
38	30-0"	32-9 1/2"		#4 ELECTRIC
37	0-0"	30-9 1/2"		JDRCH SHELL #3 - NOT USED
36	0-0"	29-5 1/2"		ROSE WINDOW
35	0-0"	28-9 1/2"		TREE TRAVELERS
34	0-0"	28-1 1/2"		LEGS #4 SR
33	0-0"	27-5 1/2"		LEGS #4 SL
32	27-0"	26-1 1/2"		#2 SOUND MONITORS
31	27-0"	25-5 1/2"		#3 ELECTRIC
30	0-0"	24-9 1/2"		OPEN
29	0-0"	24-1 1/2"		GATES HANGER
28	0-0"	23-5 1/2"		LEGS #3 SL
27	0-0"	22-9 1/2"		LEGS #3 SR
26	0-0"	22-1 1/2"		BLACK BORDER (REP)
25	0-0"	20-9 1/2"		CHANDELIER
24	0-0"	18-9 1/2"		JDRCH SHELL #2 - NOT USED
23	0-0"	17-5 1/2"		MIDSTAGE BLACKOUT (REP)
22	0-0"	16-9 1/2"		MIDSTAGE MOUNTAIN SCRM
21	0-0"	16-1 1/2"		OPEN
20	29-0"	15-5 1/2"		#2 ELECTRIC
19	0-0"	14-9 1/2"		OPEN
18	0-0"	14-1 1/2"		ABBEY WALL
17	0-0"	13-5 1/2"		LEGS #2
16	0-0"	12-1 1/2"		COLUMN TRAVELERS
15	0-0"	11-5 1/2"		OPEN
14	0-0"	10-9 1/2"		MARIA BEDROOM
13	0-0"	10-1 1/2"		OPEN
12	0-0"	9-5 1/2"		ARCH TRAVELERS
11	0-0"	8-9 1/2"		OPEN
10	25-0"	8-1 1/2"		#1 ELECTRIC
9	0-0"	6-9 1/2"		JDRCH SHELL #1 - NOT USED
8	27-0"	5-5 1/2"		#1 SOUND MONITORS
7	0-0"	4-9 1/2"		LEGS #1 (SHOW PORTAL)
6	0-0"	4-1 1/2"		OPEN
5	0-0"	3-5 1/2"		(PU SCREEN - NOT USED)
4	0-0"	2-9 1/2"		OPEN
3	0-0"	2-1 1/2"		MAIN CURTAIN (REP)
2	0-0"	1-1 1/2"		NAZI BANNERS
1	0-0"	0-9 1/2"		FRONT VALANCE (REP)
N/A	N/A	0"		Passer Line
LS #	Trim	Qty	D' to PL	Description

KEY TO INSTRUMENTATION

- SolaSpot 1000 12
- SolaFrame Theatre 6
- Elation Artiste Picasso 5
- Robe BMFL Followspot 3
- CHAUVET R2 WASH 22
- ETC Source-4 10" 5
- ETC Source-4 19" 4
- ETC S4-14" LED Tungs 10
- ETC S4-50" LED Tungs 4
- ETC S4-14" LED Lustr 6
- ETC S4-19" LED Lustr 28
- ETC S4-26" LED Lustr 24
- ETC S4-36" LED Lustr 24
- Ovation E-260 WW 36 5
- Ovation E-260 WW 50" 2
- ETC ColorSource PAR-MR 19
- ETC ColorSource PAR-WO 6
- ETC S4 Fresnel Lustr 6
- ETC ColorSource Linear 4 Deep Blue 14

GENERAL NOTES

LEGEND

ABBREVIATIONS:
 R = Rosco
 G = GAM
 A = Apollo
 LS = Line Set
 GP = Ground Plan
 LX = Electric
 TD = Tech. Direct.
 LD = Lighting Desgr.

FOCUS COLOR
 LENS
 TEMPLATE
 UNIT #
 CHANNEL #

REVISION HISTORY

NO.	REVISION	DATE	BY
A01	SCENIC LAYOUT / DOC PREP	22 JULY 21	DBT
A02	REVISED PLOT	12 AUGUST 21	PGMT
B01	PLOT NOTES / ADDED UNITS	08 AUGUST 21	AGMT
B02	REVISED PLOT	12 AUGUST 21	PGMT
B03c	ADDED PRACTICALS	26 AUGUST 21	AGMT

THE SOUND OF MUSIC

PRODUCTION STAFF

DIRECTOR: SHALER HENSLEY
 ASSOC DIR/CHOREO: CINDY MORA REISER
 LIGHTING DESIGNER: MIKE WOOD
 ASSOC LD/PROGRAMMER: DALTON HAMILTON
 ASSOC LIGHTING DSGNR: ABBY MAY
 PROD. ELEC: OLIVIA DONIPHAN
 SCENIC DESIGNER: ADAM KOCH

- THE BYERS THEATRE -
 SANDY SPRINGS, GA - SEPTEMBER 2021

SCALE: 3/8"=1'
 UNLESS OTHERWISE NOTED

PG SIZE: ARCH D

DWG NUMBER: 7 OF 7

LIGHTING MOTORS
 HOIST PLAN / DIMENSIONS