

**freeFall**  
theatre company

freeFall Theatre and Brian Reale present...

# Tell Me On a **SUNDAY**

**Sep 5–Oct 5, 2025**

music by **Andrew Lloyd Webber**

lyrics by **Don Black**

Presenting Sponsor

**Brian Reale**

Show Sponsors

**Patricia & Timothy Doyle**

**Michael Miller & Robert Jenkins**

Community Partners

**Hal Freedman & Willi Rudowsky**

**Pinellas Community Foundation**

**Betsy Schweitzer**

**Bill Ward**

**Theresa Watson**

**Cherie Willard**



**Subscribe for only \$29 a month!**

See all that freeFall has to offer.

Mainstage shows and special events from movies screenings, concerts, cabarets, and more! See the full lineup at [freefalltheatre.com](http://freefalltheatre.com).

### **Subscriptions**

Subscriptions are only \$29/mo for adults and \$19/mo for youth under 18. See as much freeFall programming as you'd like for one low monthly price.

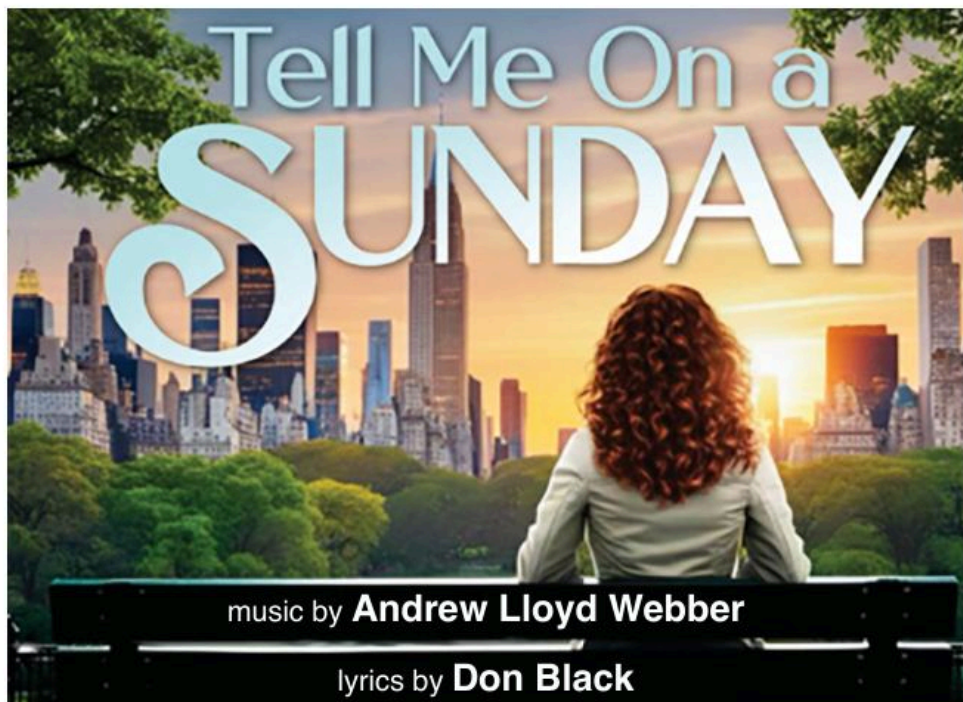
### **Flex Pass**

This flexible package is the OG punchcard style subscription. This is a pack of 6 admissions that can be used in any combination you wish. See each mainstage production once. A couple could catch three of the shows together. Or bring a group of 6 to one show. You get the idea. This is a great package for those who only wish to attend mainstage productions or for those who are only in town seasonally. This package expires one year after purchase.

### **Gift Cards**

Give the gift of live theatre. Immediate delivery by email or print out an attractive card.

For more information, visit:  
[freefalltheatre.com](http://freefalltheatre.com) or call us at (727) 498-5205



Presenting Sponsor

**Brian Reale**

Show Sponsors

**Patricia & Timothy Doyle • Michael Miller & Robert Jenkins**

Community Partners

**Hal Freedman & Willi Rudowsky • Pinellas Community Foundation  
Betsy Schweitzer • Bill Ward • Theresa Watson • Cherie Willard**

*Tell Me On a Sunday* is presented by arrangement with Concord Theatricals on behalf of The Really Useful Group. [www.concordtheatricals.com](http://www.concordtheatricals.com)

*Tell Me On a Sunday* was first presented at the 1979 Sydmonton Festival.

freeFall Theatre is a member of Theatre Communications Group (TCG), the national organization for the American theatre.

THE VIDEOTAPING OR MAKING OF ELECTRONIC OR OTHER AUDIO AND/OR VISUAL RECORDINGS OF THIS PRODUCTION AND DISTRIBUTING RECORDINGS OR STREAMS IN ANY MEDIUM, INCLUDING THE INTERNET, IS STRICTLY PROHIBITED, A VIOLATION OF THE AUTHOR(S)'S RIGHTS AND ACTIONABLE UNDER UNITED STATES COPYRIGHT LAW.

<sup>Δ</sup>Member of Actors' Equity Association, the union of professional actors and stage managers in the United States

+ denotes members of United Scenic Artists, local USA 829, a labor union and professional association of designers, artists, and craftspeople



## Booking a group at freeFall has never been easier.

Group tickets become available in springtime when single tickets go on sale to the general public. To check availability or learn details about a performance in advance, please email [groups@freefalltheatre.com](mailto:groups@freefalltheatre.com). We are always happy to hear from you!

### GROUPS OF TEN OR MORE GET 10% OFF PER TICKET!

In addition to discounted tickets,  
your group can expect:

- No handling/ticketing fees
- Group holds up to one month prior to selected performance
- Printed tickets mailed at least one week prior to selected performance
- Post-show talkbacks (must be scheduled in advance)

#### Are you an academic group?

school teacher? college professor?  
instructor? coach? Send us an email at  
[groups@freefalltheatre.com](mailto:groups@freefalltheatre.com)! We'll get  
your group ready to go.

## ways to purchase ♦

#### BUY ONLINE

Enter code **Group10 for 10% off** when you buy tickets online at [freefalltheatre.com](http://freefalltheatre.com)!

#### GIVE US A CALL

Give us a call at 727-498-5205 x107 and we'll find you great seats for a performance of your choice. Box office phones are open Wednesday - Sunday from 10am-3pm.

#### QUESTIONS?

Let us know how we can help you plan your next group outing. Please contact us at [groups@freefalltheatre.com](mailto:groups@freefalltheatre.com).

## BRING HOME THE MAGIC OF OZ!

CD NOW  
AVAILABLE  
AT CONCESSIONS



**OZTHEMUSICAL.COM**

Emma .....	Julia Rifino
Ensemble.....	Maiky Ayala
Ensemble.....	David Tanciar <sup>A</sup>
Ensemble.....	Mark Wildman

## production Team

director.....	Eric Davis
music director .....	Michael Raabe
set designer .....	Hansen Scenic
choreographer .....	Leann Alduenda
dance captain .....	David Tanciar <sup>A</sup>
lighting designer .....	Mike Wood <sup>+</sup>
video/costume/properties designer.....	Eric Davis
sound engineer.....	Nathan Doyle
production stage manager.....	Daniel LeMien <sup>A</sup>
master carpenter .....	James Putnam
carpentry assistant .....	Stephen Lima
scenic painter .....	Julia Rifino
assistant scenic painters .....	James Putnam Jonathan Harrison
master electrician/technical supervisor.....	Trenten Szabo
electrician .....	Reuben Hirsh
scenic volunteers.....	Larry Alexander Ralph Contursi Denver McLeod Bill Ward

## the Setting

**Place:** London, New York, and Hollywood

**Time Period:** 1980s

**Run time:** approximately 70 minutes with no intermission

YOU'RE INVITED TO THE

# freeFall castParty

**SATURDAY, NOVEMBER 8, 2025**  
6 - 10 PM ✦ PERFORMANCE AT 7

**FREEFALL THEATRE**  
6099 CENTRAL AVE, ST PETERSBURG

- pre-show open bar with hors d'oeuvres
- performance of *DEATHTRAP*
- post-performance dessert and celebration with the cast
- \$50 from each ticket is a charitable contribution to freeFall Theatre's annual fund

castParty ticket: \$125



## Save the Date!

# the Musicians

music director/keys.....	Michael Raabe
cello .....	George Alexander
drums (select performances).....	Melanie Downs
woodwinds (select performances).....	Josh Hollenbeck
bass.....	Richard Jimenez
drums.....	Burt Rushing
guitar.....	Paul Stoddart
woodwinds.....	David Tagliarini
bass (select performances) .....	Kenny Walker

## freeFall Staff

artistic director .....	Eric Davis
executive director .....	Craig Badinger
community outreach/marketing director .....	Matthew McGee
resident musical director.....	Michael Raabe
patron services/operations manager .....	Jonathan Harrison
resident stage manager.....	Daniel LeMien <sup>A</sup>
artistic associate.....	Julia Rifino
artistic associate.....	James Putnam
master electrician/technical supervisor.....	Trenten Szabo
audio supervisor .....	Nathan Doyle
grant writing.....	Georgia Mallory Guy
support team.....	Hannah Barrens Colleen Cherry, Sara DelBeato Mary Jane Jeffery, Savannah Moore Erin Robinson, Paul Rose Janice Strawn, and Marc Vallin

## the Board

Robert O'Brion, President	Gabe Alves	<i>Emeritus Status:</i>
Eileen Sweeney, VP	Chris Eaton	Cheryl Forchilli
Molly Moorhead, Secretary	Yasmin Marinaro-Basone	Bob Devin Jones
Ed Lally, Treasurer	Diane Bailey Morton	
	Marjorie Sherwin	

# 2025/26 Season

Thanks to all our sponsors. We couldn't do it without you.

## **Tell Me On a Sunday**

**Sep 5 - Oct 5, 2025**

music by **Andrew Lloyd Webber**  
lyrics by **Don Black**

### *Presenting Sponsor*

Brian Reale

### *Show Sponsors*

Patricia & Timothy Doyle  
Michael Miller & Robert Jenkins  
*Community Partners*  
Hal Freedman & Willi Rudowsky  
Pinellas Community Foundation  
Betsy Schweitzer  
Bill Ward  
Theresa Watson  
Cherie Willard

## **Deathtrap**

**Oct 24 - Dec 7, 2025**

by **Ira Levin**

### *Presenting Sponsor*

Bill Ward

### *Show Sponsors*

Michael Miller & Robert Jenkins  
*Community Partners*  
Patricia & Timothy Doyle  
Betsy Schweitzer  
Cherie Willard

## **A Christmas Carol**

**Dec 12 - Dec 24, 2025**

book and lyrics by **Keith Fergusson**  
music by **Bruce Greer**

### *Presenting Sponsor*

Brian Reale

### *Show Sponsors*

Al & Sandee Steinberg  
*Community Partner*  
Kathy Day IMO Irma Stanley Day

To find out more about sponsorship opportunities, please contact  
**Craig Badinger** at:

[craig@freefalltheatre.com](mailto:craig@freefalltheatre.com) or  
(727) 498-5205 x110.

**Simply escape awhile.**

## **Himself and Nora**

**Jan 30 - Mar 8, 2026**

book, music, and lyrics by **Jonathan Brielle**

### *Presenting Sponsor*

Brian Reale

### *Show Sponsors*

Bill & Suzanne Garth  
*Community Partners*  
Stephen Andon & Susan Robertson  
Russell Buchan  
Patricia & Timothy Doyle  
Robert & Vivian Fabbro Keenan  
Betsy Schweitzer  
Bill Ward  
Theresa Watson  
Cherie Willard

## **And Then They Came For Me: Remembering the World of Anne Frank**

**Apr 10 - May 17, 2026**

by **James Still**

### *Presenting Sponsors*

Al May

Michael Schine ICO

Jerome Schine's centennial  
Charis & Rich Warshof

### *Show Sponsors*

Gary & Linda Hansen  
Michael Miller & Robert Jenkins  
*Community Partners*  
Joanne & Ralph Contursi  
Hal Freedman & Willi Rudowsky  
Judy Heintzelman

## **Bash of the Titans:**

### **An Unauthorized Parody Party**

**Jun 12 - Aug 2, 2026**

book & lyrics by **Eric Davis, Matthew McGee & Michael Raabe**

music arrangements & orchestrations by **Michael Raabe**

### *Presenting Sponsors*

Michael Miller & Robert Jenkins  
Kevin A. Lane

### *Show Sponsors*

Jim Carlson IMO JoEllen Carlson  
Hal Freedman & Willi Rudowsky  
Bill Ward  
*Community Partners*  
Betsy Schweitzer  
Cherie Willard

# special Thanks

Larry Alexander  
Avery Anderson  
The Artisan Magazine  
Arts Axis Florida  
Katie Berger Wood  
BroadwayWorld  
Meredith Borden & Judy Schroeder  
Ralph Contursi  
Creative Loafing Tampa  
Creative Pinellas  
Cheryl Davis  
Daytime NBC  
Sara DelBeato  
Amanda Ferrer & Vanessa Galvis  
freeFall volunteers  
The Gabber

Judy Heintzelman  
Kevin A. Lane  
Denver McLeod  
Radio St Pete  
Cindy Stovall  
The City of St Petersburg  
St Pete Catalyst  
St Pete Arts Alliance  
Tampa Bay Arts Passport  
Tampa Bay Magazine  
Tampa Bay's Morning Blend  
Visit St. Pete/Clearwater  
Bill Ward  
Nanette Wisner  
WMNF



## THE STUFFED MUSHROOM

CREATIVE CATERING • ELEGANT ENTERTAINING

Tampa Bay's premier caterer now features a charming boutique with gifts for every occasion.



Beatriz Ball



Europe 2 You



Mud Pie



Nora Fleming

825 Main Street • Safety Harbor, FL 34695 • 727.726.8686

[TheStuffedMushroom.com](http://TheStuffedMushroom.com)

# Theater. Music. Art. Dance. Literature. *And More.*

The most complete arts  
coverage in Tampa Bay



visit [stpetecatalyst.com](http://stpetecatalyst.com)

## How else can you help?



**Housing.** If you have an accessory dwelling unit with its own entrance and kitchenette, you can host freeFall actors while they appear on our stage. About half of our actors are local favorites, and the rest visit us for 8-week stays and need cozy housing.



**Vehicle.** freeFall will gratefully accept a functioning car as a donation. We provide our visiting actors with local transportation, and we would be thrilled to own an extra vehicle.



**Laptops.** Some computers in our office are slowing down. Donating your used yet functional laptop could save us thousands of dollars.

**If you wish to donate housing, a vehicle, or a laptop, please contact Executive Director Craig Badinger at [craig@freefalltheatre.com](mailto:craig@freefalltheatre.com) or (727) 498-5205 x110. We will provide documentation for your generous in-kind gift.**

**Thank you!**



## Julia Rifino

Emma

...is thrilled to be back onstage at freeFall in *Tell Me On a Sunday!* In addition to being one of freeFall's Artistic Associates, she finds joy in performing in our Tampa Bay community! You may recognize her from credits including: Sophie in *Mamma Mia!* (American Stage), Olivia Glatt in *Miracle on 34th Street: A Live*

*Musical Radio Play* (freeFall), Kate Monster in *Avenue Q* (Straz Center & Stageworks), Red Girl in *Shout! The Mod Musical* (Straz Center), Alice in Jobsite Theater's *Alice* and as Pickles in Stageworks Theatre's popular *The Great American Trailer Park The Musical* series. She thanks you wholeheartedly for supporting the arts, and sends love and gratitude to her incredible family, friends, and partner! Follow Julia on Instagram: @juliarifino, @juliarifino.art



## Maiky Ayala

Ensemble

... is excited to make his freeFall debut! Based in Orlando, Maiky has performed with Orlando Shakespeare in *Evita* and *In The Heights*. He has trained with Alvin Ailey American Dance, American Ballet Theatre, and Broadway Dance Center as part of their summer intensive programs. Other credits include *Pippin*, *Hairspray*, and as a featured dancer for

Linda Eder, Taylor Dayne, and many more. He appeared as part of the BBC's Christmas Parade Special on BBC and has been a dancer for Disney Cruise Lines, Royal Caribbean, Norwegian Cruise Lines, and MSC Cruise Lines.

# TANDEM SERIES

## Included with your \$29 monthly subscription!

Our popular Tandem series brings together your favorite freeFall and Tampa Bay artists in one-night-only themed cabaret concerts.

*single ticket prices listed below*

### *Barefoot in the Park*



**Thu, Sep 25, 2025 @ 7pm**

\$15

freeFall at the Movies returns for the 2025/2026 season with a salute to late screen legend, Robert Redford. In this film based on a hit play by Neil Simon, newlyweds Corie, a free spirit, and Paul Bratter, an uptight lawyer share a sixth-floor apartment in Greenwich Village. Soon after their marriage, a series of comic misadventures cause the young couple to question if they are cut out for love in the Big

Apple. *Barefoot in the Park* also stars Jane Fonda, Charles Boyer and Mildred Natwick.

*Barefoot in the Park* is rated G and runs 1 hour and 46 minutes.



**Fri, Oct 3, 2025 @ 7pm**

\$35 (Adult) \$20 (Youth) <18

Get ready for a British Musical Invasion as freeFall salutes our favorite music from across the pond. From the Beatles and Petula Clark to Elton and Adele, come hear a fab lineup of artists interpret the British songbook. Join us, grab yourself a pint and don't miss it!

Featuring Sara DelBeato, Matthew McGee, and Julia Rifino (more to be announced...) with Michael Raabe on keys and George Alexander on cello.



**Wed, Oct 29, 2025 @ 7pm**

\$35 (Adult) \$20 (Youth) <18

Featuring Kathryn Nevets, Daphne Ferraro, and Chi Chi LaLique

Join the Tampa Bay Sanderson Sisters for a tribute to everyone's favorite Halloween film franchise, *Hocus Pocus* and *Hocus Pocus 2*. Watch as Winifred, Sarah, and Mary present some of your favorite scenes (and songs) from these beloved movies. In this show, the sisters turn *Hocus*

*Pocus* on its head as the three lead witches are played by some of Florida's favorite drag queens.

The evening also includes a costume contest and trivia with the sisters! Prizes for best costume.

**\*\*This show is intended only for mature audiences. Audience discretion is advised.**

**For more information, visit:**

[freefalltheatre.com](http://freefalltheatre.com), or call the box office at (727) 498-5205

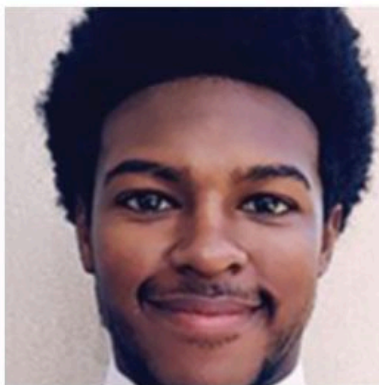


## David Tanciar<sup>Δ</sup>

Dance Captain/Ensemble

...is excited to be making his debut at freeFall. He was last seen in *Kinky Boots* at The Olney Theatre Center. Favorite credits include Brian in *Summer: The Donna Summer Musical* (National Tour) *The Wedding Singer* (Gateway Playhouse), *Beauty and The Beast: Live on Stage* (Walt Disney World), Trick in *The Boy From Oz* (TheatreZone), Swing/

Dance Captain in *Wicked* (Universal Japan), Puck in *A Midsummer Night's Dream* (Opera Naples), Benjamin in *Seven Brides for Seven Brothers* and Mingo in *Crazy For You*, (Alhambra Theatre & Dining) Fan/Reporter in *Tonya and Nancy: The Rock Opera* (TheatreZone). Instagram: @fancytanci

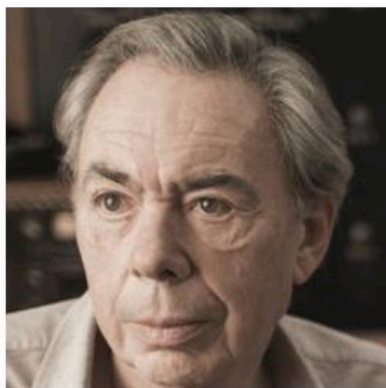


## Mark Wildman

Ensemble

...recently wowed Tampa Bay audiences as Rocky in Jobsite Theater's smash-hit production of *The Rocky Horror Show* at the Straz Center. With an AA in musical theater, he hopes to one day make it to Broadway. As a substitute teacher by day and a dance teacher in the afternoon, he enjoys any chance to be able to perform

on stages all over the Tampa Bay area. Some of his hobbies include singing, dancing, visiting coffee shops, and spending time with friends. He thanks all who support him on his journey as well as freeFall Theatre for the opportunity to work with new faces and continue doing what he loves. Some of his professional credits include *The Little Mermaid*, *42nd Street*, *Rock of Ages*, *A Chorus Line*, and *Elf the Musical*. He dedicates this performance to his son, Jamie Wildman.



## Andrew Lloyd Webber

Music

...has composed the scores of some of the world's most famous musicals. His shows have run continuously in London's West End for 50 years and ran for 43 uninterrupted years on Broadway. When the original *Sunset Boulevard* joined *School of Rock*, *CATS*, and *The Phantom of the Opera*, he equaled Rodgers & Hammerstein's record of four shows running simultaneously on

Broadway. He is one of the select group of artists with EGOT status, having received Emmy, Grammy, Oscar, and Tony Awards.

Lloyd Webber owns six London theatres, including the iconic London Palladium and Theatre Royal Drury Lane. Reopened in July 2021, the latter was completely restored and renovated at a cost of over £60 million. This was one of the biggest projects ever undertaken by a private theatre owner in recent times. His mantra is that every penny of profit made from his theatres is ploughed back into the buildings for their conservation and development.

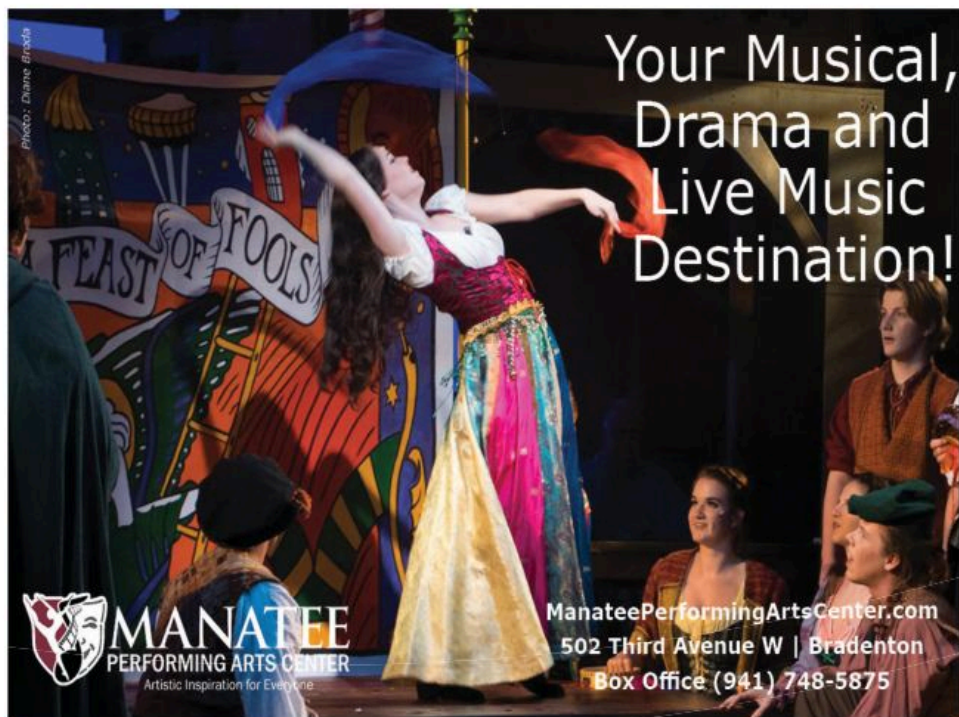

A photograph of a theater performance. A woman in a colorful, multi-layered dress is dancing on stage, holding a blue umbrella. In the background, a banner reads "A FEAST OF FOOLS". Other performers are visible in the foreground and background.

Photo: Diane Broda

# Your Musical, Drama and Live Music Destination!

 **MANATEE**  
PERFORMING ARTS CENTER  
Artistic Inspiration for Everyone

ManateePerformingArtsCenter.com  
502 Third Avenue W | Bradenton  
Box Office (941) 748-5875



## Don Black

Lyrics

...received two Tony Awards for best book and lyrics of a musical for his work with Christopher Hampton on *Sunset Boulevard*, which marked his third collaboration with Andrew Lloyd Webber. They first joined forces to write the song cycle *Tell Me On a Sunday* which developed to form the basis of the stage show *Song and Dance*. They were reunited again for *Aspects of Love*. He also wrote the lyrics for the Andrew Lloyd Webber-produced *Bombay Dreams*. Awards include an Oscar for his song "Born Free," five Academy Award nominations, two Tony Awards and three Tony nominations, six Ivor Novello Awards, a Golden Globe, and many platinum and gold discs. He has written a quintet of James Bond theme songs: "Thunderball," "Diamonds Are Forever," "The Man with the Golden Gun," "Surrender" from *Tomorrow Never Dies* and "The World Is Not Enough." Among his many popular songs are two U.S. number ones, "Ben" for Michael Jackson and "To Sir with Love" for Lulu. He was inducted in the Songwriters Hall of Fame in 2008 and recently honored in London with a BMI Icon award. Don also received the Order of the British Empire in the Queen's honours list. Don's musical, *Mrs Henderson Presents*, opened in Toronto in March 2017. Don is also a regular broadcaster and has his own show on Radio Two.



## The Bee Musketeers INC.

The Bee Musketeers Inc. is a nonprofit organization dedicated to saving honeybees, by offering donation based bee removals. We also focus on community outreach, honeybee education for children and adults, as well as offering beekeeping as a skill to at risk youth.

[WWW.BEEMUSKETEERS.COM](http://WWW.BEEMUSKETEERS.COM)

OVERTURE  
TAKE THAT LOOK OFF YOUR FACE  
LET ME FINISH  
IT'S NOT THE END OF THE WORLD (IF I LOSE HIM)  
FIRST LETTER HOME TO ENGLAND  
SHELDON BLOOM  
CAPPED TEETH AND CAESAR SALAD  
YOU MADE ME THINK YOU WERE IN LOVE  
CAPPED TEETH AND CAESAR SALAD (REPRISE)  
IT'S NOT THE END OF THE WORLD (IF HE'S YOUNGER)  
SECOND LETTER HOME TO ENGLAND  
THE LAST MAN IN MY LIFE  
COME BACK WITH THE SAME LOOK IN YOUR EYES  
LET'S TALK ABOUT YOU  
TAKE THAT LOOK OFF YOUR FACE (REPRISE)  
TELL ME ON A SUNDAY  
IT'S NOT THE END OF THE WORLD (IF HE'S MARRIED)  
THIRD LETTER HOME TO ENGLAND  
READY MADE LIFE  
I'M VERY YOU  
LET ME FINISH (REPRISE)  
NOTHING LIKE YOU'VE EVER KNOWN  
I'VE DONE IT AGAIN!  
FOURTH LETTER HOME  
DREAMS NEVER RUN ON TIME  
TAKE THAT LOOK OFF YOUR FACE (FINALE)  
UNEXPECTED SONG



**Eric Davis**

Director/Production Designer

...has been founding Artistic Director of freeFall Theatre since 2008.



## Leann Alduenda

Choreographer

...is a Southern California native, and has been a dancer, choreographer, and educator for over 30 years. She holds a BA in Dance, Magna Cum Laude and an MFA in Dance with the distinction of Leo Freeman Foundation Fellowship for choreographic and academic excellence awardee. Leann has been an artist in residence at Scottsdale Community

College, Mt. San Antonio College, Santa Ana College, and Saddleback College. Her choreography has been presented at numerous professional venues by various dance companies including Evoke Dance Company, Encore Dance Company, and AKOMIDANCE. Leann was an Associate Professor and Co-Chair of Dance at Santa Ana College for eight years and served as a lecturer at Chapman University, UC Irvine, and Riverside Community College. She also was the Artistic Director of the Jimmie DeFore Dance Center for 15 years. Leann is currently a Professor of Dance and the Dance Program Director at Cal Poly San Luis Obispo. She is beyond excited to be collaborating with freeFall Theatre on her third production!



## Michael Raabe

Music Director/Keys

...is the resident Music Director here at freeFall where he did new arrangements for our "80's intergalactic-rock" take on *The Pirates of Penzance*, retro covers and mashups for *War Of The Worlds*, and composed new music for *Peter Pan*, *White Fang*, *The Rose and The Beast*, *The Night Before*, and the World Premiere of *OZ*.

(Original Cast Recording now available!) Other musical merriment includes *Disenchanted!* (Off Broadway), Orlando Shakes, American Stage In The Park, TheatreZone, and the band Retrotastic! He is incredibly grateful to be creating and collaborating with Eric, Leann, and this super talented group of artists! Much love to my wonderful family and to James, my dear husband! [www.michaelraabe.com](http://www.michaelraabe.com)

# Do You Need Someone Savvy On your Side?

Tracie will bring the  
best mortgage solution  
for YOU



Conventional Mortgage

FHA & VA Loans

Bank Statement Loans

Reverse Mortgage

Refinance Mortgage

DSCR Loans

NOT A COMMITMENT TO LEND; NOT ALL BORROWERS WILL QUALIFY. EQUAL HOUSING OPPORTUNITY | NMLS #1663584 |  
A DBA OF MAYO MORTGAGE GROUP, LLC.



Tracie Mayo  
Savvy Mortgage Lending  
Tracie@savvymortgage.com

727-877-5684  
NMLS #1049924



**This space  
available.**

To advertise in the freeFall Program contact:  
Matthew McGee  
(727) 498-5205 x107  
matthew@freefalltheatre.com

## Nathan Doyle

Sound Engineer

...is a front of house (FOH) engineer and sound designer from right here in Tampa Bay. With a background in recorded and live music, Nathan has mixed a broad selection of national touring packages ranging from names like Tyler Bryant and Craig Xen to underground favorites Orthodox, '68, and Oh Sleeper (and most things in between). Cutting his teeth mixing regional tours, Nathan has since become a go-to sound designer within the performance theatre realm. A focus on smooth, natural sonic environments, and impactful performances keeps Nathan passionate about production work. When not in the midst of live shows, Nathan records and mixes albums, having garnered over 100 commercial credits and reviews found in "New Noise," "Vintage King," "Voyage Tampa," and more.

## Hansen Scenic, Tom Hansen

Set Designer

Over the last 24 years, Tom has designed hundreds of productions for Florida's Suncoast Theatres and abroad. His favorite award credits include: *Singin' in the Rain*, *Oklahoma!*, *Harvey*, *Philadelphia Story*, *The Sound of Music*, *Beauty and the Beast*, *The Great Sebastians*, *Mornings at Seven*, *Big River*, and *Crazy for You* (2010 Colorado Springs Fine Arts Council). Favorite shows: *Frankie and Johnny* (American Stage), *Grey Gardens* (freeFall Theatre), *Chicago* (Eight O'clock Theatre), *42nd Street* (Sarasota Players), *Hairspray* (Peach State Summer Theatre), *Man of La Mancha* (Show Palace), and *Joseph...Dreamcoat* (Colorado Springs Fine Arts Center). Tom dedicates his work to you, the audience. ENJOY THE SHOW!

## Daniel LeMien<sup>Δ</sup>

Production Stage Manager

...is thrilled to be rejoining the team for the 25/26 Season (his 35th freeFall production!). Daniel's theatre credits include—Tours: Tour Manager for Recording Artist Jim Brickman, *Forever Plaid* 25th Anniversary Tour, *Menopause the Musical*, *Say Goodnight Gracie*. Regional Credits: *Dreamgirls*, *The 39 Steps* (Virginia Stage Theatre Company), *Cabaret*, *Spring Awakening*, *Mame*, *Into the Woods*, (freeFall Theatre Company), *Dirty Blonde*, *The Importance of Being Earnest* (American Stage Theatre Company) Daniel would like to thank everyone involved in this production for all their work. Much love to his family, friends, and his partner Michael. @daniellemien

# our Partners



**Florida  
ARTS & CULTURE**

Sponsored in part by the State of Florida  
through the Division of Arts and Culture and  
the National Endowment for the Arts



**st.petersburg**  
[www.stpete.org](http://www.stpete.org)

THE **SHUBERT**  
FOUNDATION INC

**Tampa Bay  
MAGAZINE**



## James Putnam

Master Carpenter

...is in his third season working at freeFall Theatre as their master carpenter! Originally based in Orlando, he's had the privilege of gaining scenic carpentry experience at theatres including Orlando Shakespeare Theatre, Winter Park Playhouse, and St. Lukes. Outside of scenic carpentry, he is also an actor and has a passion for performance. You may have seen him on our stage in the murder mystery hit *Baskerville* and as Arthur Laurents in Doug DeVita's *Fable*. He is grateful to be on this side of the bay and would like to thank his family and partner, Julia, for their love and support during this exciting new chapter.

## Julia Rifino

Scenic Painter

... is thrilled to be working for freeFall as their resident scenic painter. Having her degrees in both Musical Theatre and Studio Art, working as one of freeFall's artistic associates allows her to merge her dual passions as a performer and visual artist. Outside of scenic painting, Julia also explores other mediums including oil paint, acrylic, charcoal, ceramics, and digital design. She sends love and gratitude to her loving family, friends, James, and the freeFall team for their endless support!

## Trenten Szabo

Master Electrician/Technical Supervisor

...has been a staple of freeFall Theatre for 13 years having previously worked in theme parks around Tampa Bay. As freeFall's technical supervisor, Trenten can be found building scenery, installing lights, working backstage, and appearing onstage as Tristan in *The Night Before* and as Sound Man in *Miracle on 34th Street: A Live Musical Radio Play*. He enjoys working on all technical aspects of freeFall productions and is excited to be a part of the *Tell Me On a Sunday* team.

# our Donors

*freeFall Theatre gratefully acknowledges the following individuals and organizations for their financial contributions. Every gift enables us to continue producing quality live theatre. Thank you!*

## Vision Circle

(founding gifts of \$25,000 or more)

Carol & Richard Lane

Kevin A. Lane

Michael & Candace Valdes – The Valdes Group

Bill Ward

Earl Waters & Ron Spivack

## Benefactor (\$25,000+)

City of St Petersburg

The Garth Family Foundation

IMO Granville Curtis Garth

Bill & Suzanne Garth

Kevin A. Lane

Michael Miller & Robert Jenkins

Brian Reale

The Shubert Foundation

Bill Ward

Charis & Rich Warshof

Cherie Willard

## Director's Circle (\$10,000+)

Drs. JoEllen\* & James Carlson

Sherry & Irv Cohen

Deborah DeBerry Long

IMO Jim Long

Patricia & Timothy Doyle

Hal Freedman & Willi Rudowsky

Al May

Janet & Iqbal Paroo

Al & Pam Roberts

Maurice & Thelma Rothman

Family Foundation

Michael Schine

ICO Jerome Schine's centennial

Betsy Schweitzer

Tampa Bay Magazine

## Diamond (\$5,000+)

anonymous

Paul & Janet Adams

Brian Biggs & Brooke Adler

Robert Briscoe

Aleta Fisher

Bernie Hall

Gary & Linda Hansen

Terry & Ron Hipps

Rob Iles & Michael Paonessa

Lynda & R. Dean Jollay, Jr.

Dr. Michael & Margaret LaRocca

Pauline McAndrew & Robert Hudson

L. Mize & N. Houghtaling

Dan & Sue Okon

Anthony Roncalli

Lisa Schweitzer

Playful Therapy

Al & Sandee Steinberg

Rose Walton\* & Marjorie Sherwin

Theresa L. Watson

James & Patricia Yoachim

Lists are current as of **Sept 1, 2025** and represent cumulative annual giving over the recent 12 months. If your name is not listed where or how you expected, please contact Executive Director Craig Badinger so that we may address any errors:

**craig@freefalltheatre.com** or **(727) 498-5205 x110**.

## Mike Wood

Lighting Designer

Mike's work has been seen on stages, screens, and classrooms throughout the world. Previously the resident lighting designer for freeFall, he lit 18 productions between 2013-2016 and met his wife, Katie, here! Recent notable projects: *Dungeons & Dragons The Twenty-Sided Tavern* (Off-Broadway, Sydney Opera House, National Tour), *Rogers the Musical* (Marvel Studios), and last year's premiere of *The Boy Who Loved Batman* at the Straz Center. Currently a Visiting Assistant Professor at Kennesaw State University, Mike has taught at Marymount Manhattan College, The Collegiate School NYC, Hillsborough Community College, and Blake School of the Arts. He received his MFA at the University of Memphis, his BA at the University of South Florida, and is a proud member of United Scenic Artists Local USA829. [www.mikewoodld.com](http://www.mikewoodld.com) @mikewoodld

### Actor's Equity Association (AEA or Equity)



...was founded in 1913 and represents more than 48,000 actors and stage managers in the United States. Equity seeks to advance, promote and foster the art of live theatre as an essential component of our society. Equity negotiates wages and working conditions, providing a wide range of benefits, including health and pension plans. AEA is a member of the AFL-CIO and is affiliated with FIA, an international organization of performing arts unions.

<sup>4</sup>Member of Actors' Equity Association, the union of professional actors and stage managers in the United States

### International Alliance of Theatrical Stage Employees (IATSE)



...is a labor union representing over 119,000 technicians, artisans, and craftspersons in the entertainment industry, including live theatre, motion picture and television production, and trade shows. United Scenic Artists, Local USA 829, is a labor union and professional association of designers, artists, and craftspeople (many of whom are world-famous) organized to protect craft standards, working conditions, and wages for the entertainment and decorative arts industries.

+Members of United Scenic Artists, Local USA 829, a labor union and professional association of designers, artists, and craftspeople

## Platinum (\$2,500+)

Gabe Alves & Aron Tomko  
Stephen Andon & Susan Robertson  
Shawn & Stacy Barko  
Jeffrey Brizzi  
Russell Buchan  
Mary Ann Cook & Debra Barrett  
Kathy Day IMO Sally Day Butler  
Phil Dinkins & Ed Lally  
Kathryn Douglas  
Christopher Eaton  
First Horizon Bank  
Vivian Fueyo  
Robert & Vivian Fabbro Keenan  
Yasmin & MaryCollette  
Marinaro-Basone  
Tracie Mayo  
Savvy Mortgage Lending

Molly Moorhead & John Sessa  
Robert & Carrie O'Brien  
Pinellas Community Foundation  
Steve & Jeana Seibert  
Simpson Family Foundation  
Eileen Sweeney & Joe Lauck  
Sandy & Keni Wilson  
McKinley Winston & Kristof Znyk

## Gold (\$1250+)

Dick & Sandi Averitt  
Jim & Kay Blair  
Joanne & Ralph Contursi  
Cheryl Davis  
Elaine & Patrick Donald  
Astrid Ellis  
Kurt Glacy  
Judy Heintzelman



Become a member.  
Save on tickets.  
Support local arts.

  
Tampa Bay  
Arts Passport



[tbartspassport.com](http://tbartspassport.com)



# LEVERONE WELLNESS

727-823-4663

[www.leveronewellness.com](http://www.leveronewellness.com)

**Professional. Relaxing. Effective.**

Chiropractic & Massage Therapy for pain relief, mobility,  
and total-body wellness.

Feel your best—schedule an appointment today!

**Gold (\$1250+) cont**

Alma Hirsch

Perry Katherine Huntington

Thomas Lahr & Ronald Dovel

David & Carol May

Gayle & Paul Metevia

Nancy S. Olson

Jack & Kelly Ornell

Julia Rosenthal

Ezra & Skipper Singer

Ron Spivack & Earl Waters

The Stuffed Mushroom

Jesse & Mila Turtle

John & Anna Broshears

Linda Burke

Susan Burnett

Mary Ellen Cease

Elinor Coleman & David Sparkman

Bill Collins

Sharon Dubble & William Richkus

Janet Eckhoff

Henry Ellis & Jeffrey Burtch

Ellen Connor Engels

Marianne & Bill Ferrari

Jan & Bob Funk

Joe Gillespie

Carol S. Green

Patrick R. Green\*

Peter & Sue Greenbaum

Jeanne & BW Hilburn

**Silver (\$750+)**

Dedee Aleccia & Hal Hultman

Cynthia & Lewis Apter

**Silver (\$750+) cont**

Linda & Al Humphers  
Vicki Pridgen Kananen  
Edward Lieberman  
Joni Long  
David & Kelly McCollum  
Mark & Mary Myers  
Kyle Norberg  
Adeline O'Connell  
Carol O'Neill  
Denny Robertson Family Foundation  
Victoria Rosado  
Priscilla & Jack Schlegel  
Shane & Emilie Socash  
Kathryn Swintek  
Total Wine & More  
Valley National Bank

Julian Weingarten  
IMO Shelby Weingarten  
Robert Wertz  
Roy & Rhonda Whitehead

**Bronze (\$250+)**

anonymous (4)  
Rob Abernathy  
Robert & Susan Allen  
Alana Badinger IMO Gary Badinger  
Barbara A. Bankoff & Robert W. Crandall  
Van H. Barnes, Jr. & Carol Barnes  
Jane & David Beam  
Dr. David & Melissa Bernstein  
Kay Borton  
Peter Bosco  
Geri Brizzi



**S T U D I O @ 6 2 0**

**LIVE RADIO THEATRE**

**Presented Monthly at The Studio@620**  
The Studio@620, 620 1st Ave. S., Downtown St. Pete  
[WWW.STUDIO620.ORG](http://WWW.STUDIO620.ORG)



**Bronze (\$250+) cont**

Elaine Buchholtz  
Kate Callahan & George Wagner  
Jean & David Campbell  
Yvonne Cappello  
Miles & Barbara Capron  
Robert C. Carlton  
Linda P. Carroll  
James Christopher  
Michael J. Cimino  
Phil Clark & Brian Jones  
Joel Cohen & Barry Dingman  
IMO Robert Culpepper  
Robert Cooke & Kay Johnson  
Tom & Bette Corboy  
Susan Cornett & William Chawk  
Patricia Courtney

Wes & Janese Davis  
Roger & Robin Deslauriers  
Doreen Dibiagio & Nancy Corporon  
Virginia G. England  
Barbara Esposito  
Ed Everett & Kitty Rose  
Thomas & Shondra Farner  
Joanne Feldman & Andrew Tartler  
Jack & Pam Flick  
Kathy & Peter Forde  
Paula & Keith Fowler  
Sue Froid  
Marcia Gassman  
The Gillespies  
Dr. Patricia Ginley  
Beth Gordon  
IMO Joseph E. Gayton, Esq.



*Sage*

**SARASOTA'S  
CULINARY  
DESTINATION**

IN THE HEART OF THE  
ARTS & THEATRE DISTRICT

**941.445.5660**

**SAGESRQ.COM**

**Bronze (\$250+) cont**

Andrea Graham & Geoff Simon  
Phyllis Green  
Greenlight Cinema  
Kimberly Gustafson  
Rob Hall  
Elaine Hare  
Albert Harris  
Jeanne Hilburn  
Andrea Hunsinger & Ronald Webster  
Carol & Mark Jaffe  
Isaiah & Phyllis Johnson  
Jill Rosie Johnson  
Joan & Bud Karins  
Pat Kelly  
Judy Krahenbuhl  
Joel Kurtz  
Larry Lentchner  
Jacquie Lewis  
Rabbi Jacob & Joanne Luski  
Kari Mainelli  
Bruce & Mary Ann Marger  
Yvonne & Adrian Marrullier  
Vanessa McCambridge  
Fred & Barbara McCoy  
Mike & Sara McNulty  
Marilou Metke  
Veronica Miller  
Chad Mize  
Joan Morrison & Shirley Magnanti  
Miriam & Joseph Nixon  
Rachel Nohlgren  
Stephen & Sarah Nohlgren  
Carolyn Nygren  
Fagl Oxman  
Tristan Panasuk  
Nick Pavonetti  
Bonnie Peavy

Patty Day & David Perkey  
IMO Sally Day Butler  
Laila Petrou  
Jay Poindexter  
Gary Polin & Etta Rosenberg  
Marilyn & Herb Polson  
Toby Port  
Doug & Lynda Porter  
Becky & David Ramsey  
Joe & Robin Reed  
Linda & Stan Reimer  
John & Martha Robb  
Gregory Rosasco  
Sylvia Rosenfield  
Lucille Ruga  
Dr. & Mrs. Lawrence Savitsky  
Brent & Debbie Sembler  
Robert & Susan Semmens  
Brenda Shaffer & Lynda Ruckman  
Edward & Betty Shamas  
Sydni Ann Shollenberger, APR  
Dr. & Mrs. John Sinnott  
Michael Slomka  
Peggy Spoor & Michael Hopkinson  
Cathy Swanson  
Patty & Tom Symons  
Phil & Carol Todd  
Michael Trager & Sarah Loughran  
Lina & Carl Treleaven  
Lindsay Trench  
Anita "Sue" Tuccillo  
Drs. Ralph & Patsy Warmack  
Sterling & Kathryn Watson  
Debbie White  
Bill Wiese & Gene Verdon  
Tim Wiley & Jim Williams  
Christopher & Denise Woods

**Friend (\$100+)**

Liana Ycikson & Mylene Santana  
Mervi Zuercher  
anonymous (16)  
Beata Abbs & Ted Seward  
Cynthia Alander  
Dorine Andrews  
Beverly & Henry Andringa  
Scott A. Arndt & Betsy Bennett  
Michael & Jean Audino  
Joyce Baffi  
Angela Baisley  
Sherry & Bill Barry  
Raoul G. Baumel  
Craig & Jeanine Baumgartner  
Rita Becchetti  
Leah Bischoff  
Penny Bishop  
Doris Boggs  
Catherine Borton  
Barbara & Jamie Brownlee  
Matt & Laura Bryant  
Robert & Cindie Buchanan  
Paul & Barbara Calhoun  
Robert Carlton  
D.D.S. Ervin Cerveny  
Mardie Chapman  
Kathy Church  
Armin & Julie Cline  
Roberta Connelly  
Michael Coon  
Gayla & Robert Copenhafer  
Julie Corkran IMO Kim Adams  
Loren Corrieri  
Mary Cox  
Margo Coyle  
Karl & Patti Crandall

Deborah Darrah  
Greg Davidson  
Jane & Simon Dawkins  
Michael De Cuollo  
Anne Deegan  
Yvonne & Timothy deLeon  
Judy Doane  
Peter Downes & Stephen Phillips  
Jillian Doyle  
Roy Duttweiler  
Janet Elias & Dave McConnell  
Patti & Mark Ewin  
Thomas Fauquet  
Maureen Feder  
Marilyn Field  
Glenn Franklin  
Carlos Frey & Sophia Sorolis  
IMO Andrew Garfinkel  
Michele Kidwell Gilbert &  
    Dr. Gordon J. Gilbert  
Cindy Goldman  
Colleen Grant  
Tom & Susan Haight &  
Ann Hathaway  
James & Lucia Hecht  
Susan Hofstader  
Craig Houk & Scott Kelly  
Lily Howard  
Susan Howard  
Dr. Peggy Huey  
Carol & Mark Jaffe  
Hugh James  
Sharon B. Kenny  
Jack & Kathleen King  
Carol Kline  
Sara Kobak  
Geerard Kosten

**Friend (\$100+) cont**

Jeff Krahenbuhl  
Jeanne & Matt Kravits  
John Kuveikis  
Teri J. Lazzara IHO Matthew McGee  
Amy Levine  
Cathy Leonard  
Debbie Lindroth  
Mary Lippitt  
Levitate  
Janet Macomber  
Caroline Maisel  
Dorothy Mann  
Cheryl Manning  
Carol & William Marger  
Marsha Mark & Judy Raynor  
Hugh M. Martin, Jr.  
Denise McCabe  
Sandy McCay  
David & Kathleen Merkler  
Davida Milne  
Deborah Mitro  
Barbara G. Moritz  
Tracy Nickel & Tom Martin  
John David Nissley  
William Nordbruch  
Wilma Norton & Peter Couture  
Mike & Sara Nower  
Christopher & Joe O'Brien  
Maxine Nadel Offenbach &  
    Russell Offenbach  
Oldja Kitchen and Bath  
Melodie & Stu Oleson  
Richard & Natalie Oliver  
Steve Osborne  
Rick & Diane Pajot  
Georgia Parsons  
Carol Petroc & John Ullman  
Liz Power & David Havasi

Jeanne Pysher & Page Whiting  
James Rayfield  
Joseph Reid  
Theresa Rifino  
Laura Ronan  
Gina Rothlein  
Dennis & Pamela Rowe  
Karen Ruzicka  
Bea & Elliot Samuelson  
Barbara Schmid  
Paulette Simon  
Steve Stephens  
Christine & Tim Stives  
Lauren & Nate Stockard  
Janice Strawn  
Patricia Strawn  
Irene Sullivan  
Marla Sutton & Marcus Lee  
Joe Tapper  
Ted & Suzy Teele  
Josie Tucker  
Marilou VanZanten  
Jose L. Velazquez, MD  
Martin G. Volpe  
Sheelagh M Wallis  
Carolyn K. Warren  
Donna Warren  
Jay Weisman IMO Kim Adams  
Krista Whipple  
Judith Willis  
Sue Wilson  
Debbie Yones & Alan Mohney, Jr.

IHO = In Honor Of

IMO = In Memory Of

ICO = In Celebration Of

\* = deceased

**Remembering freeFall in your estate planning** helps ensure our long-term financial health, creating a strong foundation from which we can continue to grow and **enrich our community for generations to come.**

The Legacy Society celebrates individuals who have included freeFall in their will, trust or estate plans, or named freeFall as a beneficiary of an insurance policy or retirement account. Inclusion in the Legacy Society allows freeFall to express our gratitude for your intended gift, and it allows your planned gift intention to serve as encouragement to others.



**Build a  
Lasting  
Legacy**

**Become a valued Legacy Society member today,** and we will honor your generosity with acknowledgement in our annual report and playbills. As another way to show our appreciation, Legacy members receive invitations to special exclusive events throughout the season.

For further information or to notify us of a planned gift, please contact Craig Badinger at [craig@freefalltheatre.com](mailto:craig@freefalltheatre.com) or (727) 498-5205 x110.

## Special thanks to our members:

Armand P. Brunet\*  
Sally Day Butler\*  
JoEllen\* & Jim Carlson  
Marsha Carson\*  
Kathy Day  
Phil Dinkins & Ed Lally  
Patricia & Timothy Doyle  
Christopher Eaton  
Henry Ellis & Jeffrey Burtch  
Helen Feldman\*  
Hal Freedman & Willi Rudowsky  
Patrick R. Green\*  
Gary & Linda Hansen  
Judy Heintzelman  
Damien & Amanda Hurm  
Rob Iles & Michael Paonessa  
Camilla D. Kilgroe

Thomas Lahr & Ronald Dovel  
Edward Lieberman  
Henry J. McClenahan Jr.  
Sonya Miller\*  
    Irwin H. Miller Family Trust  
Margaret O'Connell  
Jay Poindexter & Craig Badinger  
Joe Pugliano & Don Sheets  
Brian Reale & Fred Wilcox  
Connie Robinson  
Sheelagh M. Wallis  
Rose Walton\* & Marjorie Sherwin  
Bill Ward  
Earl Waters & Ron Spivack

\* = deceased

# our Subscriptions

For one monthly fee, see everything we do. That's the ticket!

adult  
**\$29.00**  
Per Month  
**or \$319 paid annually**  
Your all-access pass  
to everything freeFall

youth  
**\$19.00**  
Per Month  
**or \$209 paid annually**  
Same package, but for  
those under 18

## Here's how it works.

- ❖ Get access to all freeFall productions and other ticketed events. Just book your tickets at your convenience online or over the phone. There are no additional box office or ticketing fees. If the ticket is available it's yours.\*
- ❖ At least 3 unique events offered every month. See a full calendar of currently scheduled programming by visiting our website.
- ❖ Simply make an initial 12-month commitment, after that, continue to enjoy all the programming you want on a month-to-month basis.
- ❖ Return multiple times to the same production. Have you already used your ticket to a particular mainstage show and wish to see it again? Just call the box office on the day of, and as long as there are seats available, be our guest!
- ❖ Youth packages can be added to any adult subscription to make a family package that's right for you. Youth tickets are for those under 18.

## Subscribe now.

Availability of seats in the premium section is based on donor status. For full access to premium seating, and to support freeFall's mission, consider becoming a donor.

## Prefer the OG Option?

If you prefer a more traditional season ticket, consider the flexPass. This punchcard-style ticket gives you 6 mainstage admissions to be used whenever and however you like.

Book tickets online anytime at [freefalltheatre.com](http://freefalltheatre.com),  
or call the box office at (727) 498-5205.

*We are happy to help.*

## Every gift counts!

Producing live theatre requires the talents of a great many individuals—*including patrons like you!* Please support freeFall Theatre with a charitable gift today.

When you give to freeFall Theatre, 100% of your tax-deductible donation goes directly to your experience. Whether it's crafting the magic you see onstage, pouring love into our campus, or expanding community outreach programs, your support matters.

## We need your support now as much as ever!

Ticket sales cover only half of a performing arts budget, so your role is important. We show our appreciation with special perks to enhance your experience of theatre. freeFall's donor benefits are listed on the next page.

## Let's do this together.

- ✓ Monthly automated payments will spread your gift throughout the year.
- ✓ Donor Advised Funds, Required Minimum Distributions, Qualified Charitable Distributions, and stock gifts are all accepted.
- ✓ freeFall Theatre is a nonprofit 501(c)3 organization, meaning your gifts are tax-deductible.



**Please take a moment  
and become a donor today!**

**Scan the QR code to give now.**

Click the NAVIGATION BAR on the top right of the homepage, and click GIVE.

# donor Benefits

## Friend (\$100–\$249)

billed annually or \$9/month

- ❖ exchange fees waived
- ❖ access to premium seating
- ❖ recognition in print program

## Bronze (\$250–\$749)

billed annually or \$22/month

- ❖ all benefits above, plus:
- ❖ recognition on digital signage

## Silver (\$750–\$1,249)

billed annually or \$65/month

- ❖ all benefits above, plus:
- ❖ complimentary beverages at the theatre concessions
- ❖ 2 complimentary tickets to our annual season announcement

## Gold (\$1,250–\$2,499)

billed annually or \$108/month

- ❖ all benefits above, plus:
- ❖ 4 complimentary guest tickets
- ❖ invitation for 2 to Backstage Pass events for each show

## Platinum (\$2,500–\$4,999)

billed annually or \$215/month

- ❖ all benefits above, plus:
- ❖ four additional complimentary guest tickets
- ❖ a personalized behind-the-scenes tour for you and your guests (upon request)

## Diamond (\$5,000–\$9,999)

billed annually or \$430/month

- ❖ all benefits above, plus:
- ❖ annual season subscriptions for 2
- ❖ invitation for 2 to a special private event hosted by Artistic Director Eric Davis
- ❖ recognition in permanent installation on the freeFall campus (pending future construction)

## Director's Circle (\$10,000–\$24,999)

billed annually or \$860/month

- ❖ all benefits above, plus:
- ❖ customized exclusive experiences to suit your specific interests

## Benefactor (\$25,000+)

billed annually or \$2,100/month

- ❖ all benefits above, plus:
- ❖ customized exclusive experiences to suit your specific interests

For questions regarding your benefits please contact Craig Badinger, Executive Director, [craig@freefalltheatre.com](mailto:craig@freefalltheatre.com) or (727) 498-5205 x110

**YES, I would like to SUPPORT freeFall Theatre!**

Name: \_\_\_\_\_

Address: \_\_\_\_\_

City: \_\_\_\_\_ St: \_\_\_\_\_ Zip: \_\_\_\_\_

Phone: \_\_\_\_\_

Email: \_\_\_\_\_

**I would like to become a DONOR at the:**

- FRIEND LEVEL (\$100 or \$9/month)
- BRONZE LEVEL (\$250 or \$22/month)
- SILVER LEVEL (\$750 or \$65/month)
- GOLD LEVEL (\$1,250 or \$108/month)
- PLATINUM LEVEL (\$2,500 or \$215/month)
- DIAMOND LEVEL (\$5,000 or \$430/month)
- DIRECTOR'S CIRCLE LEVEL (\$10,000) or \$860/month
- BENEFACTOR LEVEL (\$25,000 or \$2,100/month)

**Want to spread payment of your gift over 12 months?  
Just check the box below and provide your credit card to set up a monthly autopay!  
or visit [freefalltheatre.com/give](http://freefalltheatre.com/give)**

Please indicate how you would like to be listed in acknowledgments.

- Enclosed is my check made payable to: freeFall Theatre
- Please charge my credit card for the full amount immediately.
- Please charge my credit card in **12 equal monthly payments for the donor level I selected above.**

Card #: \_\_\_\_\_ Exp: \_\_\_\_\_ CVV: \_\_\_\_\_

Donor benefits begin upon payment and continue for one year. For questions about donorship or for more information contact:

Craig Badinger, Executive Director  
(727) 498-5205 x110  
[craig@freefalltheatre.com](mailto:craig@freefalltheatre.com).

You can also become a donor by visiting the box office or online:  
<https://freefalltheatre.com/give>

FREEFALL THEATRE COMPANY, A 501(C)3 NOT-FOR-PROFIT ORGANIZATION (TIN: 26-4251761), ACKNOWLEDGES ALL CONTRIBUTIONS AS TAX-DEDUCTIBLE LESS THE VALUE OF ANY GOODS OR SERVICES RECEIVED. A COPY OF THE OFFICIAL REGISTRATION AND FINANCIAL INFORMATION MAY BE OBTAINED FROM THE DIVISION OF CONSUMER SERVICES BY CALLING TOLL-FREE (800-435-7352) WITHIN THE STATE. REGISTRATION DOES NOT IMPLY ENDORSEMENT, APPROVAL, OR RECOMMENDATION BY THE STATE. REGISTRATION CODE CH33321. 100% OF EACH CONTRIBUTION IS UTILIZED BY FREEFALL THEATRE.



# david reynolds

jewelry & coin

since 1971

*All that glitters ... bought and sold!*

***We are your Full -Service Jewelers!***

## Offering:

- ★ Appraisals and Estate Services
- ★ Jewelry Repairs
- ★ Custom and Reworked Designs

## Buy and Sell:

- ★ Gold, Silver, Platinum Bullion,
  - ★ Coins & Collectible Currency,
  - ★ Sterling Flatware and Holloware
  - ★ Gold & Platinum Jewelry
- ★ ***and SO MUCH MORE!*** ★

**4009 Central Avenue**  
**St. Petersburg, FL**

**(727) 327-2646**

**davidreynoldsjewelryandcoin.com**

