

KEY TO INSTRUMENTATION

	ETC High End Lonestar	4
	Chauvet Rogue R2X Spot	3
	Chauvet Rogue R1 Wash	6
	36° Prolights Eclipse	34
	50° Prolights Eclipse	2
	COLORdash Par H12 IP	8
	ETC Vivid 11	5
	ETC S4 Junior 36°	11
	ETC S4-PAR (WFL)	6
	ChromaQ Chroma-Q	7

LEGEND

ABBREVIATIONS:	FOCUS	FOC CLR
R = Rosco	—	—
G = GAM	—	—
A = Apollo	—	—
LS = Line Set	—	—
GP = Ground Plan	—	—
LE = Electric	—	—
TD = Tech. Direct.	—	—
LD = Lighting Diagram	—	—
LENS	—	—
TEMPLATE	—	—
UNIT #	—	—
ENGINE TYPE	—	—
CHANNEL #	—	—



MW LIGHTING LD# 10574
www.mwlighting.com

REVISION HISTORY

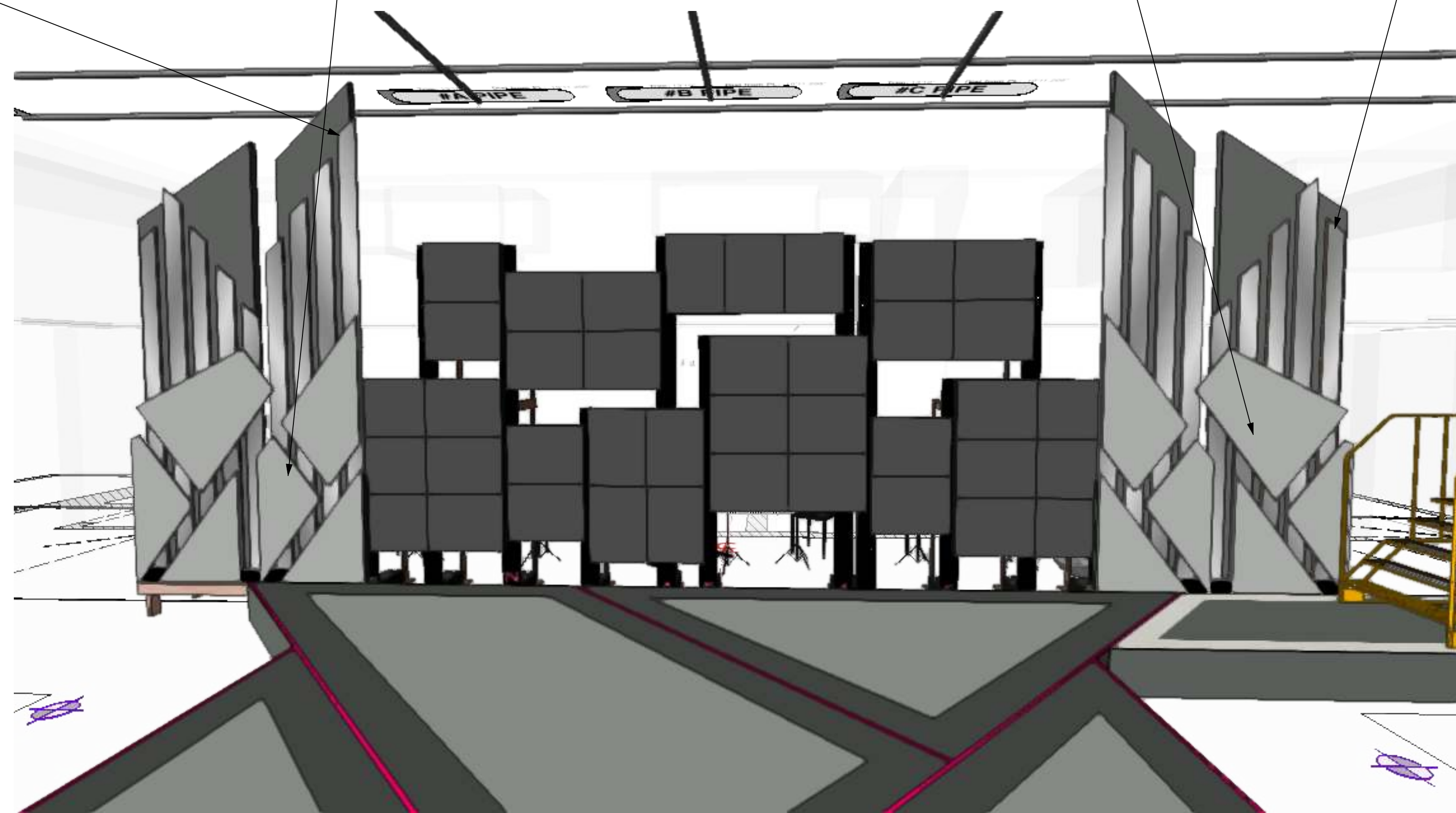
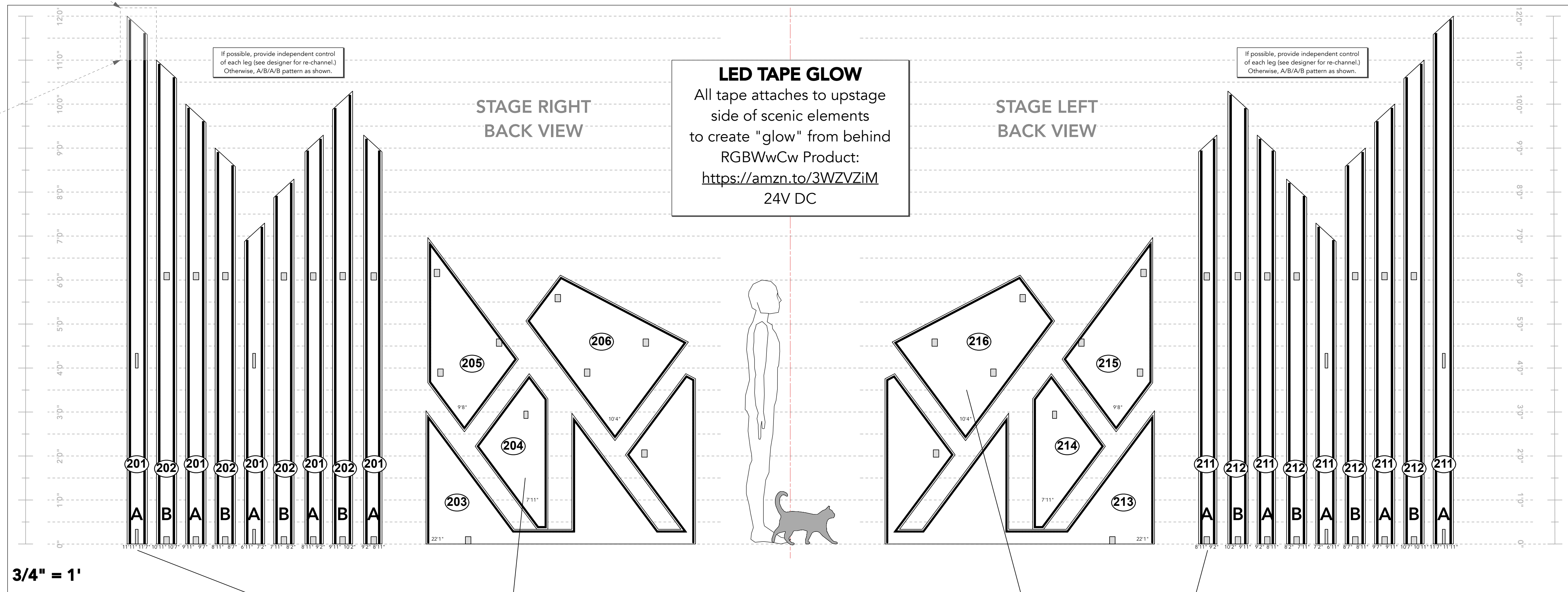
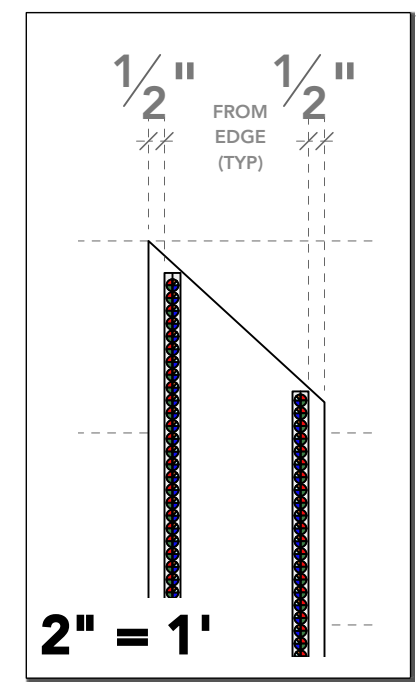
NO.	REVISION	DATE	BY

TELL ME ON A SUNDAY

PRODUCTION STAFF
 DIRECTOR: ERIC DAVIS
 LIGHTING DESIGNER: MIKE WOOD
 SCENIC DESIGNER: TOM HANSEN
 PRODUCTION ELEC: TRENTEN SZABO

freeFall
 theatre company
 2025 - St. Petersburg, FL

SCALE 1/2" = 1'
 PG SIZE ARCH D
 DWG NUMBER **L01** OF 4
LIGHT PLOT - OVERHEAD
 OVERSTAGE HANG



KEY TO INSTRUMENTATION

- ETC High End Lonestar 4
- Chauvet Rogue R2X Spot 3
- Chauvet Rogue R1 Wash 6
- 36° Prolights Eclipse 34
- 50° Prolights Eclipse 2
- COLORDash Par H12 IP 8
- ETC Vivid 11 5
- ETC S4 Junior 36° 11
- ETC S4-PAR (WFL) 6
- ChromaQ Chroma-Q 7

LEGEND

ABBREVIATIONS: R = Risco, G = GAM, A = Apollo, LS = Line Set, GP = Ground Plan, LE = Electric, TD = Tech. Direct, LD = Lighting Design

FOCUS: FOC CLR

COLOR: CLR

LENS: LENS

TEMPLATE: TEMPLATE

UNIT #: UNIT #

ENGINE TYPE: ENGINE TYPE

CHANNEL #: CHANNEL #



MW LIGHTING LD# 10574

This drawing contains a design and/or construction requirement. The lighting designer and/or manufacturer shall be responsible for providing the technical specifications for the equipment and for ensuring that the equipment is installed and operated in accordance with the manufacturer's instructions. The lighting designer and/or manufacturer shall be responsible for ensuring that the equipment is installed and operated in accordance with the manufacturer's instructions.

REVISION HISTORY

NO.	REVISION	DATE	BY

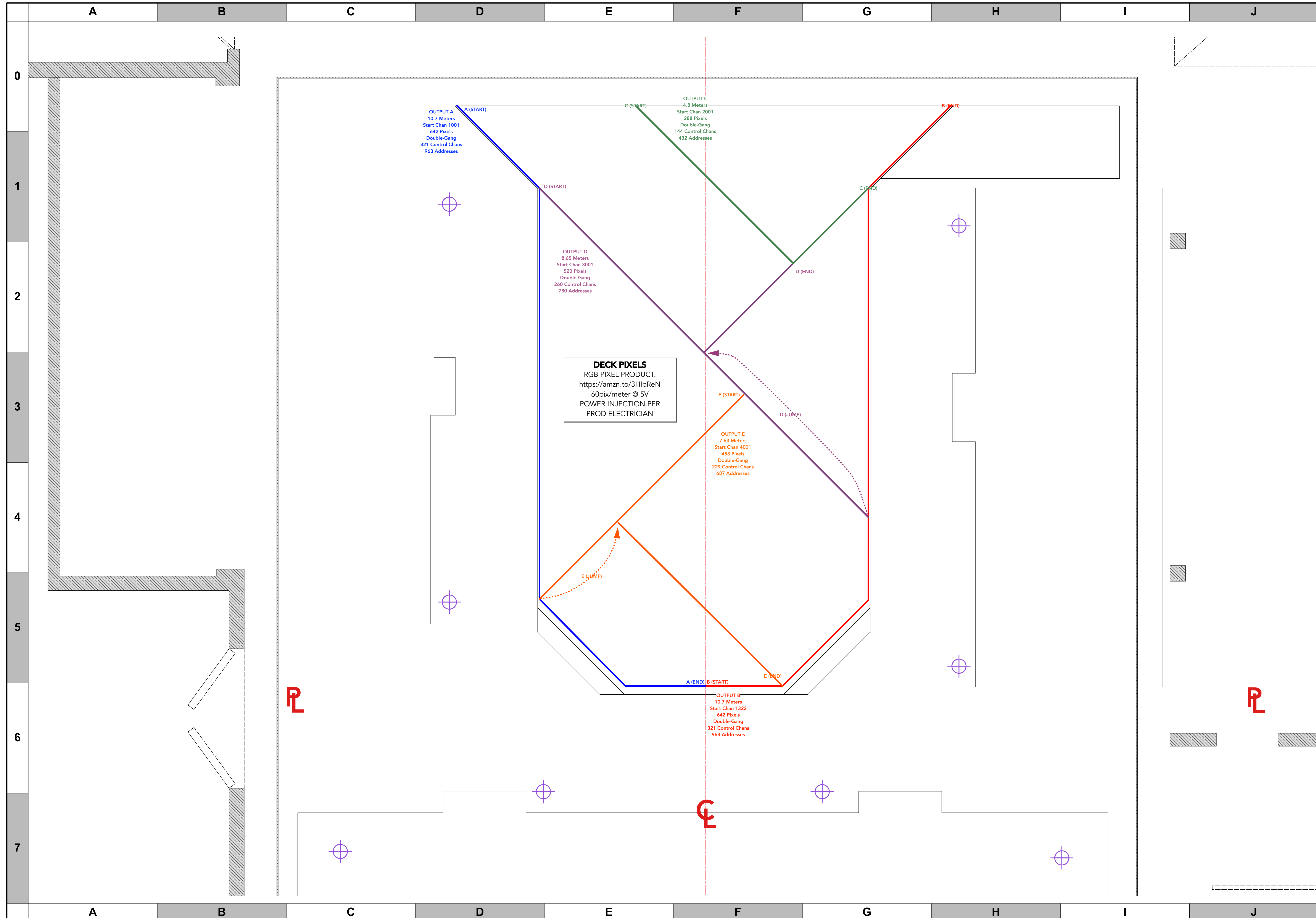
TELL ME ON A SUNDAY

PRODUCTION STAFF
 DIRECTOR: ERIC DAVIS
 LIGHTING DESIGNER: MIKE WOOD
 SCENIC DESIGNER: TOM HANSEN
 PRODUCTION ELEC: TRENTEY SZABO

freeFall
 theatre company
 2025 - St. Petersburg, FL

SCALE: NTS DWG NUMBER: L02
 PG SIZE: ARCH D OF 4

LIGHT PLOT - SET MOUNT SCENIC WALLS



KEY TO INSTRUMENTATION

	ETC High End Lonestar	4
	Chauvet Rogue R2X Spot	3
	Chauvet Rogue R1 Wash	6
	36° Prolights Eclipse	34
	50° Prolights Eclipse	2
	COLORdash Par H12 IP	8
	ETC Vivid 11	5
	ETC S4 Junior 36°	11
	ETC S4-PAR (WFL)	6
	ChromaQ Chroma-Q	7

LEGEND

ABBREVIATIONS:
R = Risco
G = GAM
A = Apollo
LS = Line Set
GP = Ground Plan
LE = Electric
TD = Tech. Direct.
LD = Lighting Design

FOCUS
FOCUS COLOR
FOC CLR

LENS
LENS

TEMPLATE
TEMPLATE

UNIT #
UNIT #

ENGINE TYPE
ENGINE TYPE

CHANNEL #
CHANNEL #



MW LIGHTING
LD# 10574
www.mwlighting.com

REVISION HISTORY

NO.	REVISION	DATE	BY

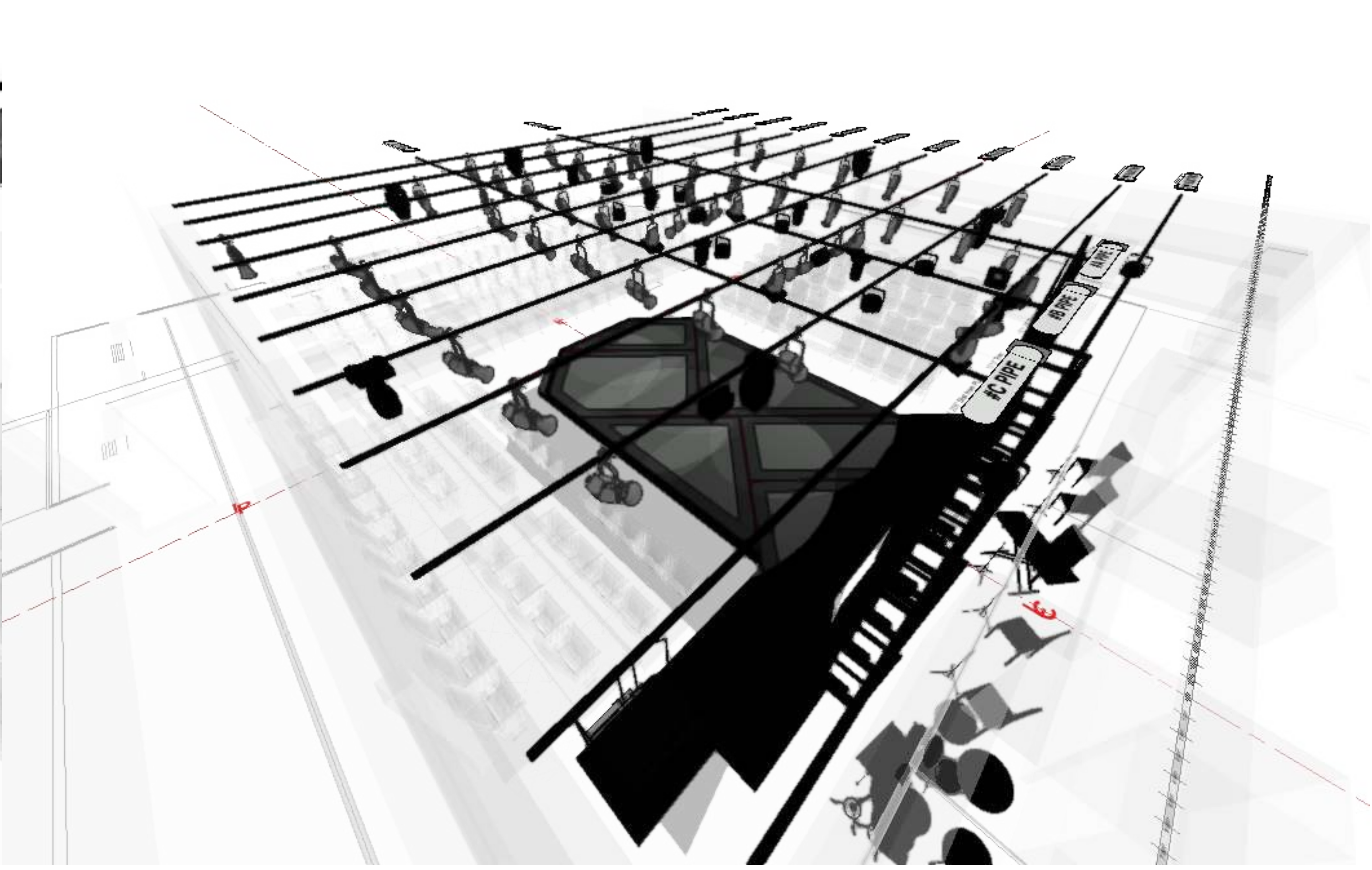
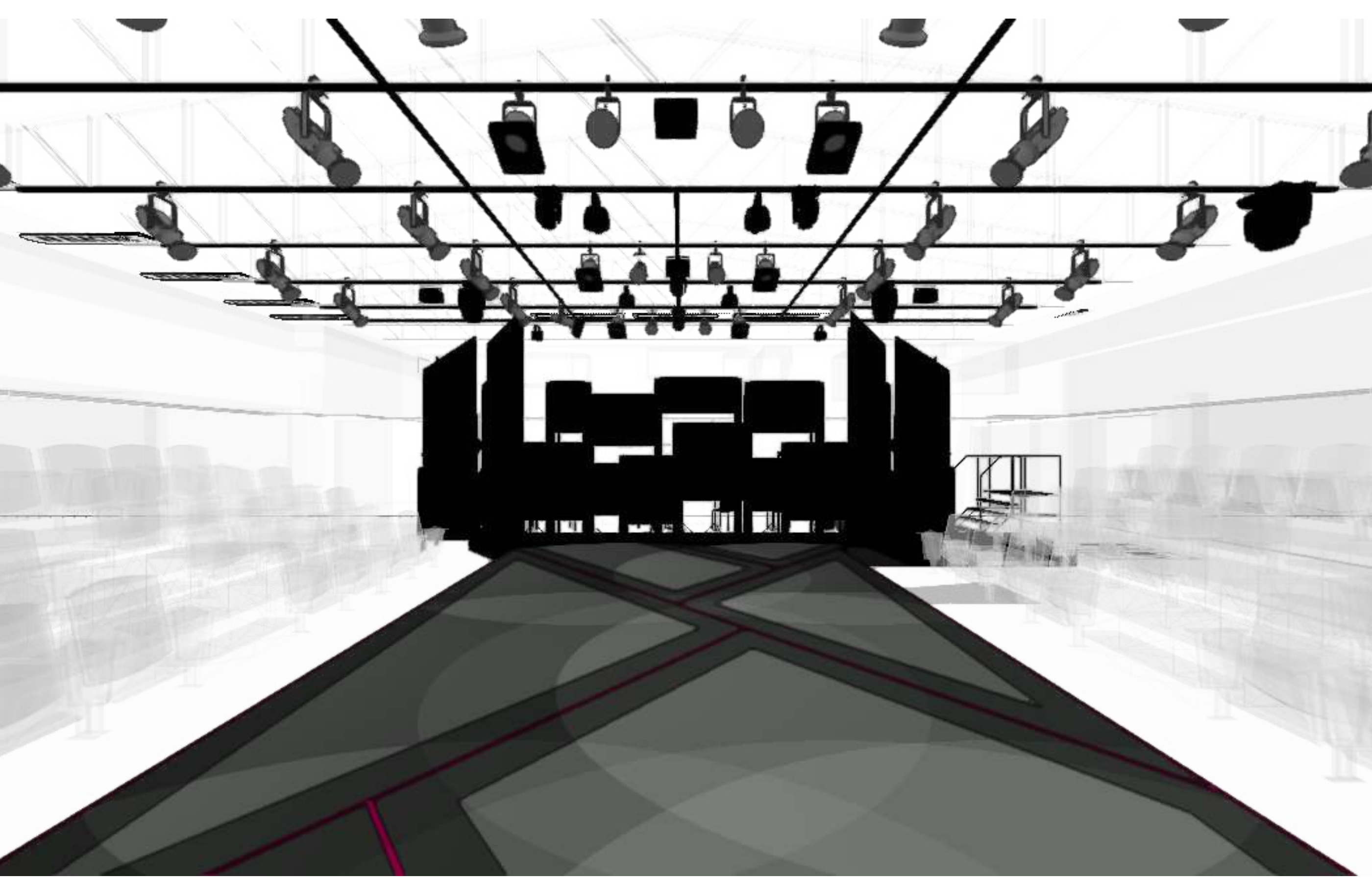
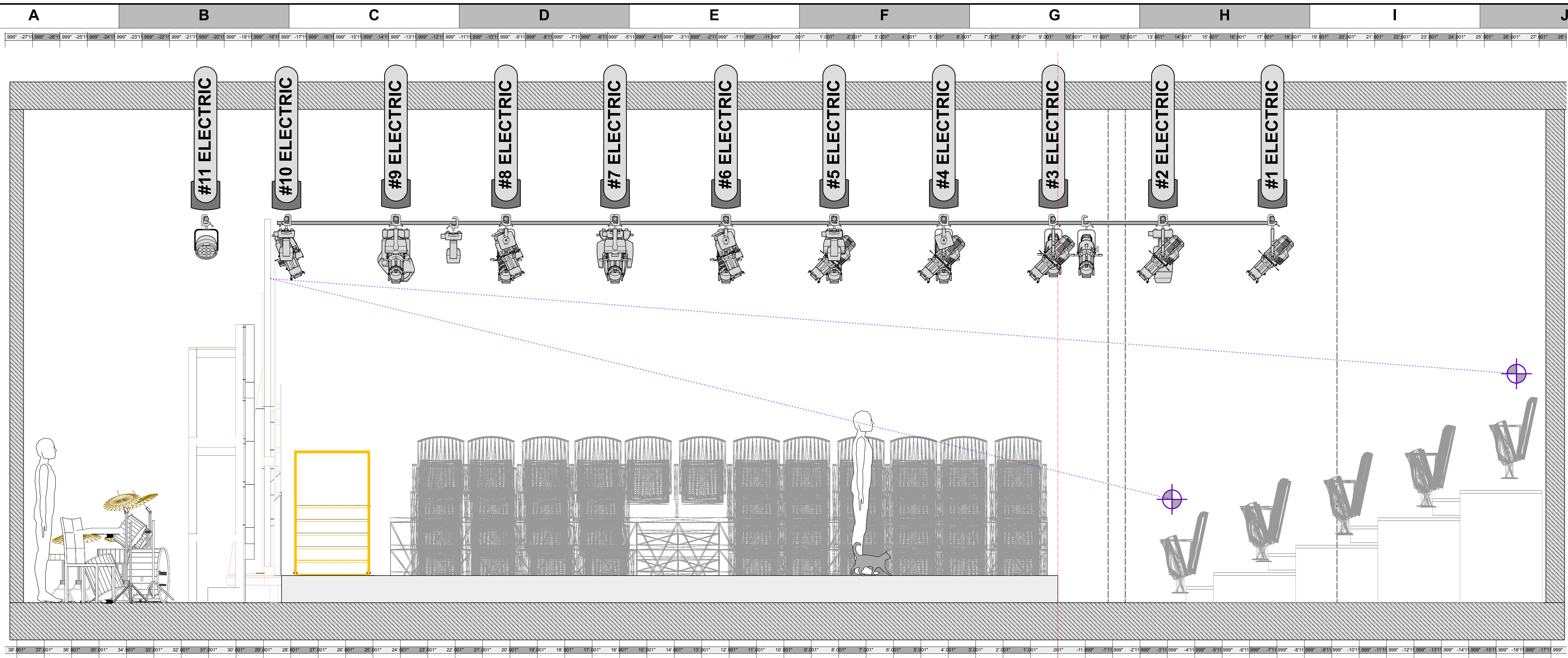
TELL ME ON A SUNDAY

PRODUCTION STAFF
 DIRECTOR: ERIC DAVIS
 LIGHTING DESIGNER: MIKE WOOD
 SCENIC DESIGNER: TOM HANSEN
 PRODUCTION ELEC: TRENTEN SZABO

freeFall theatre company
 2023 - St. Petersburg, FL

SCALE: NTS
 PG SIZE: ARCH D
 DWG NUMBER: L03
 OF 4

LIGHT PLOT - DECK
 DECK LEDS



KEY TO INSTRUMENTATION

	ETC High End Lonestar	4
	Chauvet Rogue R2X Spot	3
	Chauvet Rogue R1 Wash	6
	36° Prolights Eclipse	34
	50° Prolights Eclipse	2
	COLORdash Par H12 IP	8
	ETC Vivid 11	5
	ETC S4 Junior 36°	11
	ETC S4-PAR (WFL)	6
	ChromaQ Chroma-Q	7

LEGEND

ABBREVIATIONS:
 R = Risco
 G = GAM
 A = Apollo
 LS = Line Set
 GP = Ground Plan
 LE = Electric
 TD = Tech. Direct.
 LD = Lighting Diagram

FOCUS CLR
LENS
TEMPLATE
UNIT #
ENGINE TYPE
CHANNEL #



MW LIGHTING LD# 10574
www.mwlighting.com
 This drawing is a design and construction document. It is the property of MW Lighting and is not to be reproduced, copied, or used in any way without the written consent of MW Lighting. The lighting design and construction are the responsibility of MW Lighting. The lighting design and construction are the responsibility of MW Lighting. The lighting design and construction are the responsibility of MW Lighting.

REVISION HISTORY

NO.	REVISION	DATE	BY
1	ISSUE	8/13/23	EW
2	ISSUE	8/13/23	EW

TELL ME ON A SUNDAY

PRODUCTION STAFF
 DIRECTOR: ERIC DAVIS
 LIGHTING DESIGNER: MIKE WOOD
 SCENIC DESIGNER: TOM HANSEN
 PRODUCTION ELEC: TRENTEY SZABO

freeFall theatre company
 2023 - St. Petersburg, FL

SCALE 1/2" = 1'
 DWG NUMBER **L04**
 PG SIZE ARCH D OF 4

LIGHT PLOT - SECTION
 @CL > SL