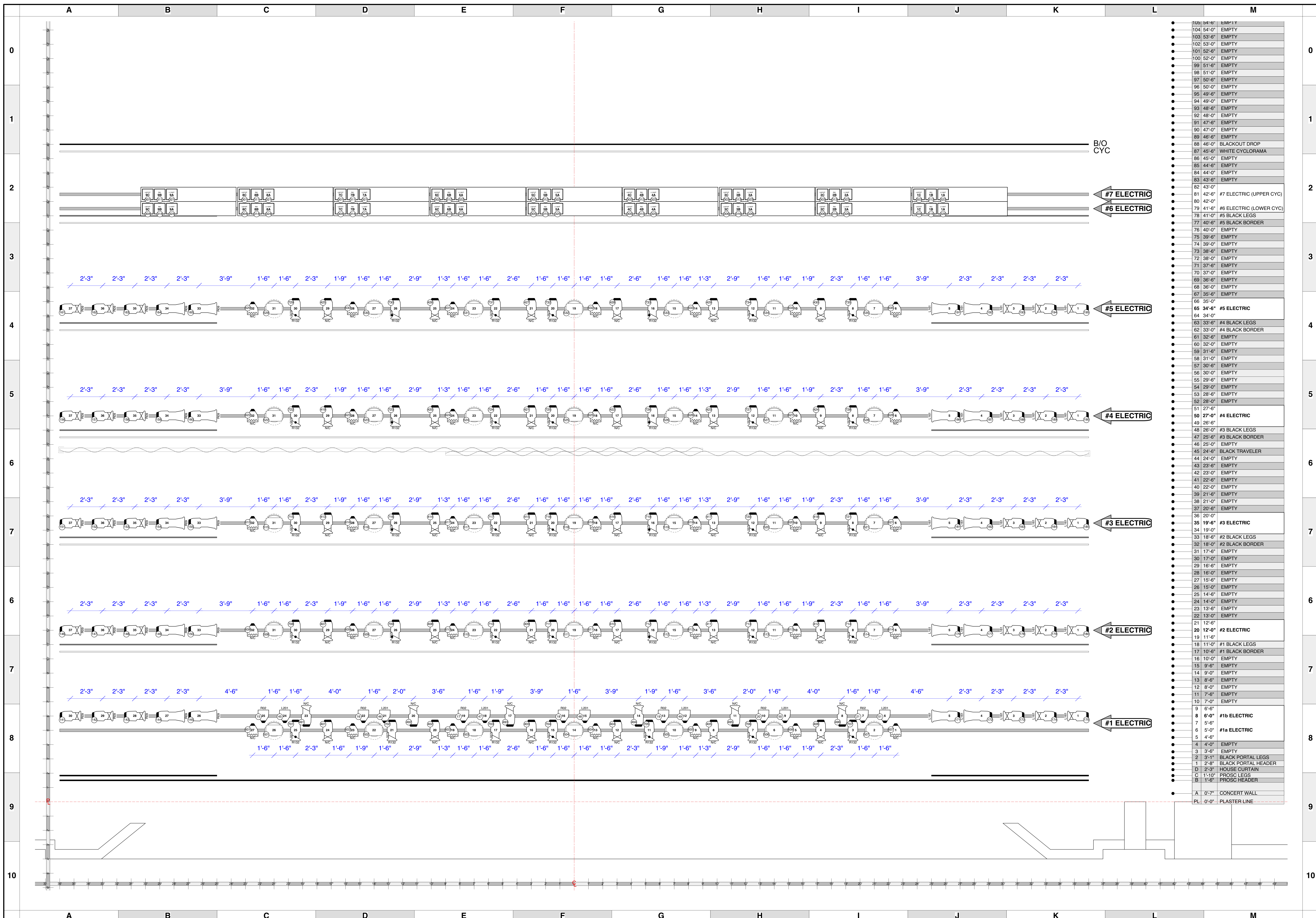
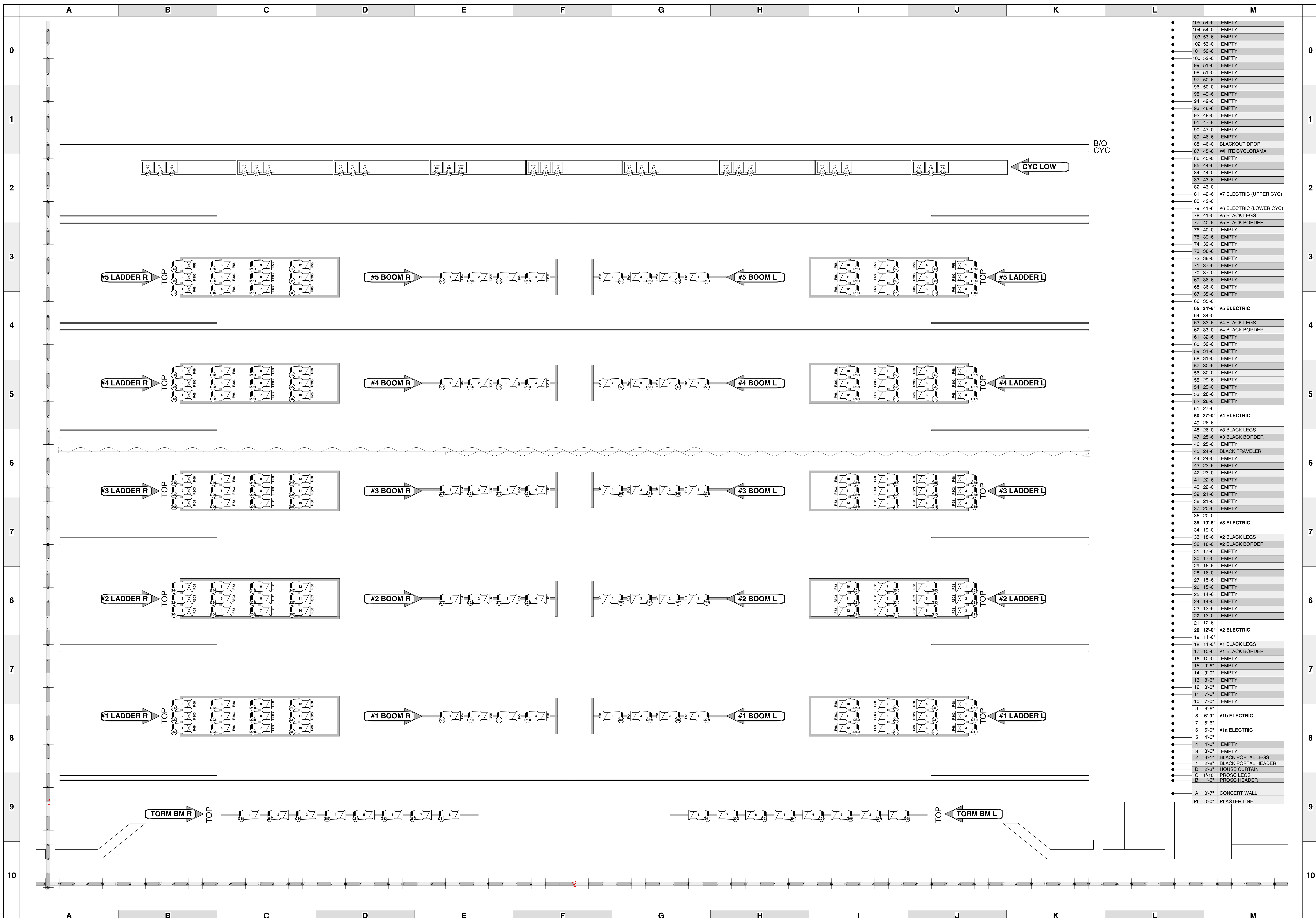


<b>KEY TO INSTRUMENTATION</b> ETC S4 14' 750w ETC S4 19' 750w ETC S4 26' 750w ETC S4 PARNEL 750w ETC S4 PAR-MFL 750w ROBE SPIDER WASH T3 CYC STRIP		<b>GENERAL NOTES</b> - Instruments hung at 10' unless otherwise noted herein. - Please see lighting paperwork for all hookup details.	<b>LEGEND</b> ABBREVIATIONS: R = Rotor G = GAM L = Line Set GP = Grand Plan LD = Light Dimmer LD = Light Dimmer LD = Light Dimmer	<b>COLOR</b> COLOR: CLR TEMPLATE: CLR UNIT #: CLR CHANNEL #: CLR	<b>STRAZ CENTER</b> IT'S MORE THAN JUST A SHOW. 1010 N. MACINNES PLACE - TAMPA, FL 33607	<b>MIKE WOOD LIGHTING DESIGN</b> 3111 Broadway NYC - New York, NY 10017 464-694-8655 Studio LD#10574	<b>PRODUCTION STAFF</b> DIRECTOR OF OPERATIONS: CJ MARSHALL DIRECTOR OF PRODUCTION: GERRARD SIEGLER HOUSE ELECTRICIAN: LESSE PERKINS HOUSE ELECTRICIAN: LESSE PERKINS STRAZ CENTER FOR THE PERFORMING ARTS - TAMPA, FLORIDA, USA	<b>CAROL MORSANI HALL OVERHEAD LIGHTING PLOT</b> DATE: 1 NOV 18 SCALE: 1/2" = 1' PG SIZE: 36"x48" DRAWING NUMBER: 1
---	--	---	---	--	--	---	---	---

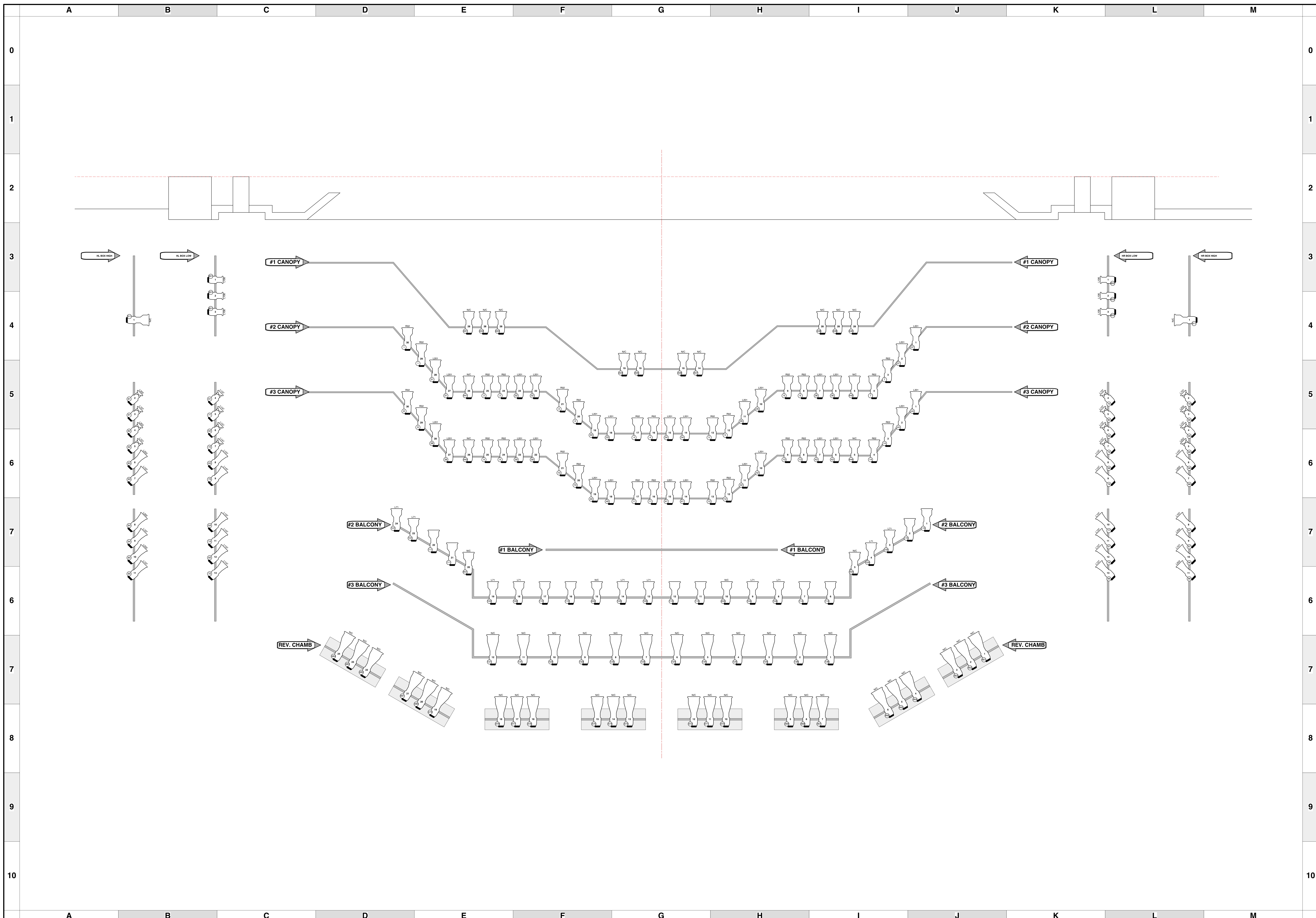


<p><b>KEY TO INSTRUMENTATION</b></p> <div style="display: flex; justify-content: space-around;"> <div style="text-align: center;"> ETC S4 14' 750w</div> <div style="text-align: center;"> ETC S4 19' 750w</div> <div style="text-align: center;"> ETC S4 26' 750w</div> <div style="text-align: center;"> ETC S4 PARNEL 750w</div> <div style="text-align: center;"> ETC S4 PAR-MFL 750w</div> <div style="text-align: center;"> ROBE SPIDER WASH BY CHANNEL MODE</div> <div style="text-align: center;"> T3 CYC STRIP WAITAGE VARIES - SEE PAPERWORK</div> </div>	<p><b>GENERAL NOTES</b></p> <p>- Instruments hung at 10' unless unless otherwise noted herein.</p> <p>Please see lighting paperwork for all hookup details.</p>	<p><b>LEGEND</b></p> <p>ABBREVIATIONS:        E = ETC        G = GAM        A = Apollo        GP = Grand Plan        LD = Line Drive        LD = Light Drive        LD = Light Drive</p> <p>COLOR: CLR</p> <p>TEMPLATE: CLR</p> <p>UNIT: CLR</p> <p>CHANNEL: CLR</p>	<p><b>STRAZ CENTER</b> IT'S MORE THAN JUST A SHOW.</p> <p>1010 N. MACINNES PLACE - TAMPA, FL 33607</p>	<p><b>MIKE WOOD LIGHTING DESIGN</b> 3141 Broadway NYC - New York, NY 10017 464-694-8656 Studio LD#10574</p>	<p><b>PRODUCTION STAFF</b></p> <p>DIRECTOR OF OPERATIONS: CJ MARSHALL        DIRECTOR OF PRODUCTION: GERRARD SIEGLER</p> <p>HOUSE ELECTRICIAN: LESSE PERKINS        HOUSE ELECTRICIAN: LESSE PERKINS</p> <p>- STRAZ CENTER FOR THE PERFORMING ARTS - TAMPA, FLORIDA, USA</p>	<p><b>CAROL MORSANI HALL</b> <b>OVERHEAD LIGHTING PLOT</b></p> <p>DATE: 1 NOV 18        SCALE: 1/2" = 1'        PG SIZE: 36"x48"</p> <p>1</p>
---	---	--	--	---	--	---



109	54'-6"	EMPTY
104	54'-0"	EMPTY
103	53'-6"	EMPTY
102	53'-0"	EMPTY
101	52'-6"	EMPTY
100	52'-0"	EMPTY
99	51'-6"	EMPTY
98	51'-0"	EMPTY
97	50'-6"	EMPTY
96	50'-0"	EMPTY
95	49'-6"	EMPTY
94	49'-0"	EMPTY
93	48'-6"	EMPTY
92	48'-0"	EMPTY
91	47'-6"	EMPTY
90	47'-0"	EMPTY
89	46'-6"	EMPTY
88	46'-0"	BLACKOUT DROP
87	45'-6"	WHITE CYCLODRAMA
86	45'-0"	EMPTY
85	44'-6"	EMPTY
84	44'-0"	EMPTY
83	43'-6"	EMPTY
82	43'-0"	EMPTY
81	42'-6"	#7 ELECTRIC (UPPER CYC)
80	42'-0"	EMPTY
79	41'-6"	#6 ELECTRIC (LOWER CYC)
78	41'-0"	#5 BLACK LEGS
77	40'-6"	#5 BLACK BORDER
76	40'-0"	EMPTY
75	39'-6"	EMPTY
74	39'-0"	EMPTY
73	38'-6"	EMPTY
72	38'-0"	EMPTY
71	37'-6"	EMPTY
70	37'-0"	EMPTY
69	36'-6"	EMPTY
68	36'-0"	EMPTY
67	35'-6"	EMPTY
66	35'-0"	EMPTY
65	34'-6"	#5 ELECTRIC
64	34'-0"	EMPTY
63	33'-6"	#4 BLACK LEGS
62	33'-0"	#4 BLACK BORDER
61	32'-6"	EMPTY
60	32'-0"	EMPTY
59	31'-6"	EMPTY
58	31'-0"	EMPTY
57	30'-6"	EMPTY
56	30'-0"	EMPTY
55	29'-6"	EMPTY
54	29'-0"	EMPTY
53	28'-6"	EMPTY
52	28'-0"	EMPTY
51	27'-6"	EMPTY
50	27'-0"	#4 ELECTRIC
49	26'-6"	EMPTY
48	26'-0"	#3 BLACK LEGS
47	25'-6"	#3 BLACK BORDER
46	25'-0"	EMPTY
45	24'-6"	BLACK TRAVELER
44	24'-0"	EMPTY
43	23'-6"	EMPTY
42	23'-0"	EMPTY
41	22'-6"	EMPTY
40	22'-0"	EMPTY
39	21'-6"	EMPTY
38	21'-0"	EMPTY
37	20'-6"	EMPTY
36	20'-0"	EMPTY
35	19'-6"	#3 ELECTRIC
34	19'-0"	EMPTY
33	18'-6"	#2 BLACK LEGS
32	18'-0"	#2 BLACK BORDER
31	17'-6"	EMPTY
30	17'-0"	EMPTY
29	16'-6"	EMPTY
28	16'-0"	EMPTY
27	15'-6"	EMPTY
26	15'-0"	EMPTY
25	14'-6"	EMPTY
24	14'-0"	EMPTY
23	13'-6"	EMPTY
22	13'-0"	EMPTY
21	12'-6"	EMPTY
20	12'-0"	#2 ELECTRIC
19	11'-6"	EMPTY
18	11'-0"	#1 BLACK LEGS
17	10'-6"	#1 BLACK BORDER
16	10'-0"	EMPTY
15	9'-6"	EMPTY
14	9'-0"	EMPTY
13	8'-6"	EMPTY
12	8'-0"	EMPTY
11	7'-6"	EMPTY
10	7'-0"	EMPTY
9	6'-6"	#1b ELECTRIC
8	6'-0"	#1a ELECTRIC
7	5'-6"	EMPTY
6	5'-0"	EMPTY
5	4'-6"	EMPTY
4	4'-0"	EMPTY
3	3'-6"	EMPTY
2	3'-1"	BLACK PORTAL LEGS
1	2'-8"	BLACK PORTAL HEADER
D	2'-8"	HOUSE CURTAIN
C	1'-10"	PROSC LEGS
B	1'-6"	PROSC HEADER
A	0'-7"	CONCERT WALL
PL	0'-0"	PLASTER LINE

<p><b>KEY TO INSTRUMENTATION</b></p> ETC S4 19' 750w ETC S4 26' 750w	<p><b>GENERAL NOTES</b></p> <p>- Instruments hung at 10' unless otherwise noted herein.</p> <p>- Please see lighting paperwork for all hookup details.</p>	<p><b>LEGEND</b></p> <p>ABBREVIATIONS:</p> <p>R = Risoop          S = GAM          L = Line Set          GP = Grand Plan          LD = Light Dimmer          LD = Lighting Design</p>	<p><b>LEGEND</b></p> <p>COLOR: CLR</p> <p>TEMPLATE: CLR</p> <p>UNIT: CLR</p> <p>CHANNEL: CLR</p>	<p><b>STRAZ CENTER</b></p> <p>1010 N. MACINNES PLACE - TAMPA, FL 33607</p>	<p><b>MIKE WOOD LIGHTING DESIGN</b></p> <p>3111 Broadway NYC - New York, NY 10017</p> <p>44-694-8655 Studio</p> <p>LD#10574</p>	<p><b>PRODUCTION STAFF</b></p> <p>DIRECTOR OF OPERATIONS: CJ MARSHALL</p> <p>DIRECTOR OF PRODUCTION: GERRARD SIEGLER</p> <p>HOUSE ELECTRICIAN: JESSE PERKINS</p> <p>HOUSE ELECTRICIAN: LESLIE ENDERMAN</p> <p>STRAZ CENTER FOR THE PERFORMING ARTS - TAMPA, FLORIDA, USA</p>	<p><b>CAROL MORSANI HALL</b></p> <p>DECK/BOOM/LADDER LIGHTING PLOT</p> <p>DATE: 1 NOV 18</p> <p>SCALE: 1/2" = 1'</p> <p>PG SIZE: 36"x48"</p> <p>PG NUMBER: 2</p>
---	--	---	--	--	---	--	--



**KEY TO INSTRUMENTATION**

ETC S4 05* 750w	ETC S4 10* 750w	ETC S4 14* 750w	ETC S4 19* 750w	ETC S4 36* 750w

**GENERAL NOTES**  
 - Instruments hung at 10' unless otherwise noted herein.  
 - Please see lighting paperwork for all hookup details.

**LEGEND**  
 ABBREVIATIONS:  
 R = Riser  
 G = GDM  
 S = Appt  
 GP = Ground Plan  
 LD = Light Dimmer  
 LD = Light Dimmer  
 LD = Light Dimmer

**COLOR**  
 C = CLR  
 T = TPL  
 L = LIT  
 CH = CHAN

**STRAZ CENTER**  
 IT'S MORE THAN JUST A SHOW.  
 1010 N. MACINNES PLACE - TAMPA, FL 33607

**CELEBRATING 30 YEARS**

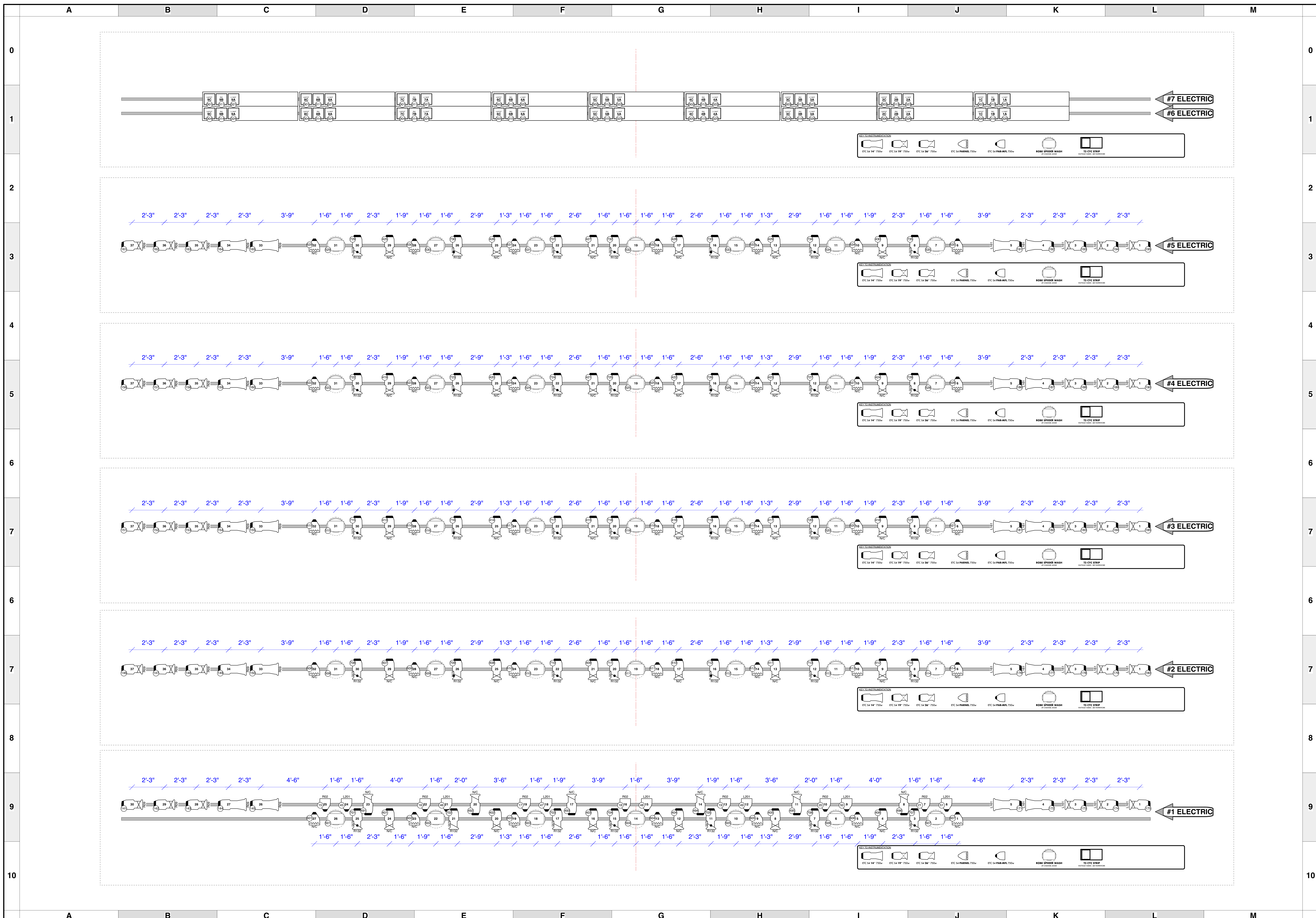
**MIKE WOOD LIGHTING DESIGN**  
 3141 Broadway NYC - New York, NY 10027  
 464-694-8655 Studio  
 LD#10574

**PRODUCTION STAFF**  
 DIRECTOR OF OPERATIONS: CJ MARSHALL  
 DIRECTOR OF PRODUCTION: GERARD SIEGLER  
 HOUSE ELECTRICIAN: REESE PERKINS  
 HOUSE ELECTRICIAN: LESLIE ENDERMAN  
 STRAZ CENTER FOR THE PERFORMING ARTS - TAMPA, FLORIDA, USA

**CAROL MORSANI HALL**  
**FOH LIGHTING PLOT**  
 DATE: 1 NOV 18  
 SCALE: 3/8" = 1'  
 PG SIZE: 36"x48"

DRW# 1116  
 3





<p><b>KEY TO INSTRUMENTATION</b></p> ETC S4 14" 750w ETC S4 19" 750w ETC S4 26" 750w ETC S4 PARNEL 750w ETC S4 PAR-MFL 750w ROBE SPIDER WASH T3 CYC STRIP <small>WAITAGE VALUES - SEE PAPERWORK</small>	<p><b>GENERAL NOTES</b></p> <ul style="list-style-type: none"> <li>Instruments hung at 10' unless otherwise noted herein.</li> <li>Please see lighting paperwork for all hookup details.</li> </ul>	<p><b>LEGEND</b></p> <p><b>ABBREVIATIONS:</b></p> <ul style="list-style-type: none"> <li>R = Riser</li> <li>G = GYM</li> <li>A = Apollo</li> <li>L = Line Set</li> <li>GP = Ground Plan</li> <li>LD = Light Detail</li> <li>LD = Light Detail</li> <li>LD = Light Detail</li> </ul> <p><b>COLOR:</b> CLR</p> <p><b>TEMPLATE:</b></p> <p><b>UNIT #:</b></p> <p><b>CHANNEL #:</b></p>	<p><b>STRAZ CENTER</b></p> <p>IT'S MORE THAN JUST A SHOW.</p> <p>1010 N. MACINNES PLACE - TAMPA, FL 33607</p> <p><b>CELEBRATING 30 YEARS</b></p>	<p><b>MIKE WOOD LIGHTING DESIGN</b></p> <p>MIKE@MIKEWOODDESIGN.COM 404-694-8656 Studio</p> <p>3111 Broadway NYC - New York NY 10017</p> <p><b>LD#10574</b></p>	<p><b>PRODUCTION STAFF</b></p> <p>DIRECTOR OF OPERATIONS: CJ MARSHALL      DIRECTOR OF PRODUCTION: GERRARD SIEGLER      HOUSE ELECTRICIAN: JESSE PERKINS      HOUSE ELECTRICIAN: LESLIE ENDERMAN      - STRAZ CENTER FOR THE PERFORMING ARTS - TAMPA, FLORIDA, USA</p>	<p><b>CAROL MORSANI HALL</b></p> <p><b>OVERHEAD HANG CARDS</b></p> <p>DATE: 1 NOV 18      SCALE: 1/2" = 1'      PG SIZE: 36"x48"</p> <p>5</p>
--	---	---	--	--	--	---