

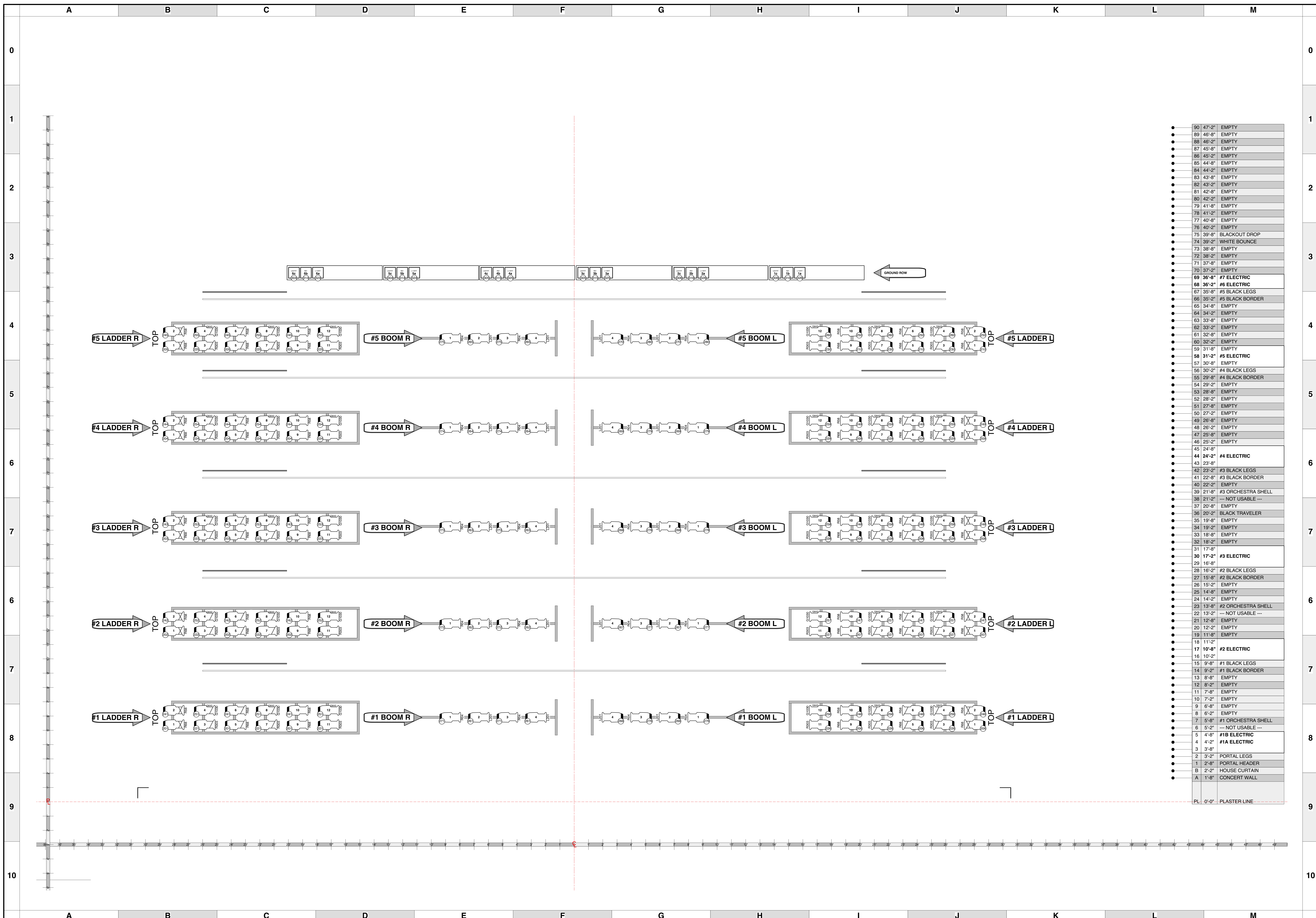
90	47'-2"	EMPTY
89	46'-8"	EMPTY
88	46'-2"	EMPTY
87	45'-8"	EMPTY
86	45'-2"	EMPTY
85	44'-8"	EMPTY
84	44'-2"	EMPTY
83	43'-8"	EMPTY
82	43'-2"	EMPTY
81	42'-8"	EMPTY
80	42'-2"	EMPTY
79	41'-8"	EMPTY
78	41'-2"	EMPTY
77	40'-8"	EMPTY
76	40'-2"	EMPTY
75	39'-8"	BLACKOUT DROP
74	39'-2"	WHITE BOUNCE
73	38'-8"	EMPTY
72	38'-2"	EMPTY
71	37'-8"	EMPTY
70	37'-2"	EMPTY
69	36'-8"	#7 ELECTRIC
68	36'-2"	#6 ELECTRIC
67	35'-8"	#5 BLACK LEGS
66	35'-2"	#5 BLACK BORDER
65	34'-8"	EMPTY
64	34'-2"	EMPTY
63	33'-8"	EMPTY
62	33'-2"	EMPTY
61	32'-8"	EMPTY
60	32'-2"	EMPTY
59	31'-8"	EMPTY
58	31'-2"	#5 ELECTRIC
57	30'-8"	EMPTY
56	30'-2"	#4 BLACK LEGS
55	29'-8"	#4 BLACK BORDER
54	29'-2"	EMPTY
53	28'-8"	EMPTY
52	28'-2"	EMPTY
51	27'-8"	EMPTY
50	27'-2"	EMPTY
49	26'-8"	EMPTY
48	26'-2"	EMPTY
47	25'-8"	EMPTY
46	25'-2"	EMPTY
45	24'-8"	EMPTY
44	24'-2"	#4 ELECTRIC
43	23'-8"	EMPTY
42	23'-2"	#3 BLACK LEGS
41	22'-8"	#3 BLACK BORDER
40	22'-2"	EMPTY
39	21'-8"	#3 ORCHESTRA SHELL
38	21'-2"	--- NOT USABLE ---
37	20'-8"	EMPTY
36	20'-2"	BLACK TRAVELER
35	19'-8"	EMPTY
34	19'-2"	EMPTY
33	18'-8"	EMPTY
32	18'-2"	EMPTY
31	17'-8"	EMPTY
30	17'-2"	#3 ELECTRIC
29	16'-8"	EMPTY
28	16'-2"	#2 BLACK LEGS
27	15'-8"	#2 BLACK BORDER
26	15'-2"	EMPTY
25	14'-8"	EMPTY
24	14'-2"	EMPTY
23	13'-8"	#2 ORCHESTRA SHELL
22	13'-2"	--- NOT USABLE ---
21	12'-8"	EMPTY
20	12'-2"	EMPTY
19	11'-8"	EMPTY
18	11'-2"	EMPTY
17	10'-8"	#2 ELECTRIC
16	10'-2"	EMPTY
15	9'-8"	#1 BLACK LEGS
14	9'-2"	#1 BLACK BORDER
13	8'-8"	EMPTY
12	8'-2"	EMPTY
11	7'-8"	EMPTY
10	7'-2"	EMPTY
9	6'-8"	EMPTY
8	6'-2"	EMPTY
7	5'-8"	#1 ORCHESTRA SHELL
6	5'-2"	--- NOT USABLE ---
5	4'-8"	#1B ELECTRIC
4	4'-2"	#1A ELECTRIC
3	3'-8"	EMPTY
2	3'-2"	PORTAL LEGS
1	2'-8"	PORTAL HEADER
B	2'-2"	HOUSE CURTAIN
A	1'-8"	CONCERT WALL
PL	0'-0"	PLASTER LINE

<b>KEY TO INSTRUMENTATION</b> ETC S4 19° 750w ETC S4 26° 750w ETC S4 PARNEL 750w ETC S4 PAR-WFL 750w ROBE SPIDER WASH T3 CYC STRIP WATTAGE VARI: SEE PAPERWORK	<b>GENERAL NOTES</b> - Instruments hung at 10' unless otherwise noted herein. - Please see lighting paperwork for all hookup details.	<b>LEGEND</b> ABBREVIATIONS: R = Riser G = GYM L = Line Set GP = Grand Plan LD = Line Drop LD = Lighting Design CHANNEL: E	<b>STRAZ CENTER</b> 1010 N. MACINNES PLACE - TAMPA, FL 33607 	<b>MIKE WOOD LIGHTING DESIGN</b> 3141 Broadway NYC - New York, NY 10027 212-694-8655 Studio LD#10574	<b>PRODUCTION STAFF</b> DIRECTOR OF OPERATIONS: GJ MARSHALL DIRECTOR OF PRODUCTION: CEMARD SIEGLER HOUSE ELECTRICIAN: JESSE PERKINS HOUSE ELECTRICIAN: LESLIE BRIDGMAN - STRAZ CENTER FOR THE PERFORMING ARTS - TAMPA, FLORIDA, USA	<b>FERGUSON HALL</b> <b>OVERHEAD LIGHTING PLOT</b> DATE: 17 MAY 2019 SCALE: 1/2" = 1' PG SIZE: 36"x48" PG NUMBER: 1
---	---	--	---	---	--	--



90	47'-2"	EMPTY
89	46'-8"	EMPTY
88	46'-2"	EMPTY
87	45'-8"	EMPTY
86	45'-2"	EMPTY
85	44'-8"	EMPTY
84	44'-2"	EMPTY
83	43'-8"	EMPTY
82	43'-2"	EMPTY
81	42'-8"	EMPTY
80	42'-2"	EMPTY
79	41'-8"	EMPTY
78	41'-2"	EMPTY
77	40'-8"	EMPTY
76	40'-2"	EMPTY
75	39'-8"	BLACKOUT DROP
74	39'-2"	WHITE BOUNCE
73	38'-8"	EMPTY
72	38'-2"	EMPTY
71	37'-8"	EMPTY
70	37'-2"	EMPTY
69	36'-8"	#7 ELECTRIC
68	36'-2"	#6 ELECTRIC
67	35'-8"	#5 BLACK LEGS
66	35'-2"	#5 BLACK BORDER
65	34'-8"	EMPTY
64	34'-2"	EMPTY
63	33'-8"	EMPTY
62	33'-2"	EMPTY
61	32'-8"	EMPTY
60	32'-2"	EMPTY
59	31'-8"	EMPTY
58	31'-2"	#5 ELECTRIC
57	30'-8"	EMPTY
56	30'-2"	#4 BLACK LEGS
55	29'-8"	#4 BLACK BORDER
54	29'-2"	EMPTY
53	28'-8"	EMPTY
52	28'-2"	EMPTY
51	27'-8"	EMPTY
50	27'-2"	EMPTY
49	26'-8"	EMPTY
48	26'-2"	EMPTY
47	25'-8"	EMPTY
46	25'-2"	EMPTY
45	24'-8"	EMPTY
44	24'-2"	#4 ELECTRIC
43	23'-8"	EMPTY
42	23'-2"	#3 BLACK LEGS
41	22'-8"	#3 BLACK BORDER
40	22'-2"	EMPTY
39	21'-8"	#3 ORCHESTRA SHELL
38	21'-2"	NOT USABLE ---
37	20'-8"	EMPTY
36	20'-2"	BLACK TRAVELER
35	19'-8"	EMPTY
34	19'-2"	EMPTY
33	18'-8"	EMPTY
32	18'-2"	EMPTY
31	17'-8"	#3 ELECTRIC
30	17'-2"	EMPTY
29	16'-8"	#2 BLACK LEGS
28	16'-2"	#2 BLACK BORDER
27	15'-8"	EMPTY
26	15'-2"	EMPTY
25	14'-8"	EMPTY
24	14'-2"	EMPTY
23	13'-8"	#2 ORCHESTRA SHELL
22	13'-2"	NOT USABLE ---
21	12'-8"	EMPTY
20	12'-2"	EMPTY
19	11'-8"	EMPTY
18	11'-2"	#2 ELECTRIC
17	10'-8"	EMPTY
16	10'-2"	EMPTY
15	9'-8"	#1 BLACK LEGS
14	9'-2"	#1 BLACK BORDER
13	8'-8"	EMPTY
12	8'-2"	EMPTY
11	7'-8"	EMPTY
10	7'-2"	EMPTY
9	6'-8"	EMPTY
8	6'-2"	EMPTY
7	5'-8"	#1 ORCHESTRA SHELL
6	5'-2"	NOT USABLE ---
5	4'-8"	#1B ELECTRIC
4	4'-2"	#1A ELECTRIC
3	3'-8"	EMPTY
2	3'-2"	PORTAL LEGS
1	2'-8"	PORTAL HEADER
B	2'-2"	HOUSE CURTAIN
A	1'-8"	CONCERT WALL
PL	0'-0"	PLASTER LINE

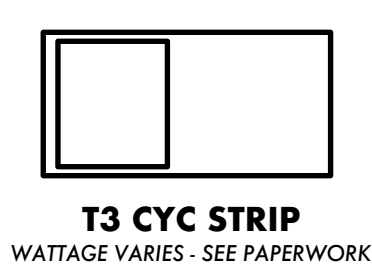
<b>KEY TO INSTRUMENTATION</b> ETC S4 19 750w ETC S4 26 750w ETC S4 PARNEL 750w ETC S4 PAR-WFL 750w ROBE SPIDER WASH T3 CYC STRIP <small>WATTAGE VALUES - SEE PAPERWORK</small>	<b>GENERAL NOTES</b> - Instruments hung at 10' unless otherwise noted herein. - Please see lighting paperwork for all hookup details.	<b>LEGEND</b> ASSIGNATIONS: R = Recess G = GAM A = Apollo GP = Grand Plan L = Line LD = Light Dimmer LD = Lighting Dimmer CHANNEL #	STRAZ CENTER 1010 N. MACINNES PLACE - TAMPA, FL 33607 CELEBRATING 30 YEARS	<b>MIKE WOOD LIGHTING DESIGN</b> 3141 Broadway NYC - New York, NY 10007 464-694-8656 Studio LD#10574	<b>PRODUCTION STAFF</b> DIRECTOR OF OPERATIONS: CJ MARSHALL DIRECTOR OF PRODUCTION: GEARARD SIEGLER HOUSE ELECTRICIAN: JESSE PERKINS HOUSE ELECTRICIAN: LESLIE BRIDGMAN STRAZ CENTER FOR THE PERFORMING ARTS - TAMPA, FLORIDA, USA	<b>FERGUSON HALL</b> <b>OVERHEAD LIGHTING PLOT</b> DATE: 17 MAY 2019 SCALE: 1/2" = 1' PG SIZE: 36"x48" DRAWING NO: 1
---	---	--	--	---	---	---



90	47'-2"	EMPTY
89	46'-8"	EMPTY
88	46'-2"	EMPTY
87	45'-8"	EMPTY
86	45'-2"	EMPTY
85	44'-8"	EMPTY
84	44'-2"	EMPTY
83	43'-8"	EMPTY
82	43'-2"	EMPTY
81	42'-8"	EMPTY
80	42'-2"	EMPTY
79	41'-8"	EMPTY
78	41'-2"	EMPTY
77	40'-8"	EMPTY
76	40'-2"	EMPTY
75	39'-8"	BLACKOUT DROP
74	39'-2"	WHITE BOUNCE
73	38'-8"	EMPTY
72	38'-2"	EMPTY
71	37'-8"	EMPTY
70	37'-2"	EMPTY
69	36'-8"	#7 ELECTRIC
68	36'-2"	#6 ELECTRIC
67	35'-8"	#5 BLACK LEGS
66	35'-2"	#5 BLACK BORDER
65	34'-8"	EMPTY
64	34'-2"	EMPTY
63	33'-8"	EMPTY
62	33'-2"	EMPTY
61	32'-8"	EMPTY
60	32'-2"	EMPTY
59	31'-8"	EMPTY
58	31'-2"	#5 ELECTRIC
57	30'-8"	EMPTY
56	30'-2"	#4 BLACK LEGS
55	29'-8"	#4 BLACK BORDER
54	29'-2"	EMPTY
53	28'-8"	EMPTY
52	28'-2"	EMPTY
51	27'-8"	EMPTY
50	27'-2"	EMPTY
49	26'-8"	EMPTY
48	26'-2"	EMPTY
47	25'-8"	EMPTY
46	25'-2"	EMPTY
45	24'-8"	EMPTY
44	24'-2"	#4 ELECTRIC
43	23'-8"	EMPTY
42	23'-2"	#3 BLACK LEGS
41	22'-8"	#3 BLACK BORDER
40	22'-2"	EMPTY
39	21'-8"	#3 ORCHESTRA SHELL
38	21'-2"	NOT USABLE ---
37	20'-8"	EMPTY
36	20'-2"	BLACK TRAVELER
35	19'-8"	EMPTY
34	19'-2"	EMPTY
33	18'-8"	EMPTY
32	18'-2"	EMPTY
31	17'-8"	EMPTY
30	17'-2"	#3 ELECTRIC
29	16'-8"	EMPTY
28	16'-2"	#2 BLACK LEGS
27	15'-8"	#2 BLACK BORDER
26	15'-2"	EMPTY
25	14'-8"	EMPTY
24	14'-2"	EMPTY
23	13'-8"	#2 ORCHESTRA SHELL
22	13'-2"	NOT USABLE ---
21	12'-8"	EMPTY
20	12'-2"	EMPTY
19	11'-8"	EMPTY
18	11'-2"	EMPTY
17	10'-8"	#2 ELECTRIC
16	10'-2"	EMPTY
15	9'-8"	#1 BLACK LEGS
14	9'-2"	#1 BLACK BORDER
13	8'-8"	EMPTY
12	8'-2"	EMPTY
11	7'-8"	EMPTY
10	7'-2"	EMPTY
9	6'-8"	EMPTY
8	6'-2"	EMPTY
7	5'-8"	#1 ORCHESTRA SHELL
6	5'-2"	NOT USABLE ---
5	4'-8"	#1B ELECTRIC
4	4'-2"	#1A ELECTRIC
3	3'-8"	EMPTY
2	3'-2"	PORTAL LEGS
1	2'-8"	PORTAL HEADER
B	2'-2"	HOUSE CURTAIN
A	1'-8"	CONCERT WALL
PL	0'-0"	PLASTER LINE

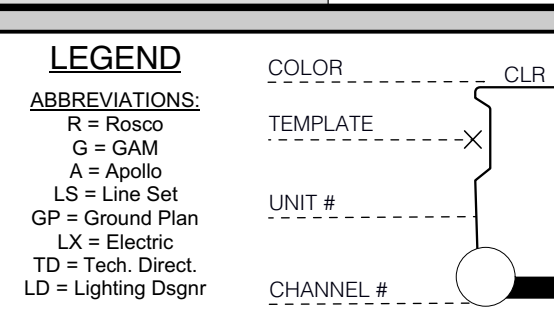
**KEY TO INSTRUMENTATION**

	ETC S4 19° 750w
	ETC S4 26° 750w
	ETC S4 36° 750w



**GENERAL NOTES**

- Instruments hung at 10' unless otherwise noted herein.
- Please see lighting paperwork for all hookup details.



**STRAZ CENTER**  
IT'S MORE THAN JUST A SHOW.  
1010 N. MACINNES PLACE - TAMPA, FL 33607

**CELEBRATING 30 YEARS**

**MIKE WOOD LIGHTING DESIGN**  
3141 Broadway Street - New York, NY 10027  
464-694-8655 Studio  
LD#10574

**PRODUCTION STAFF**

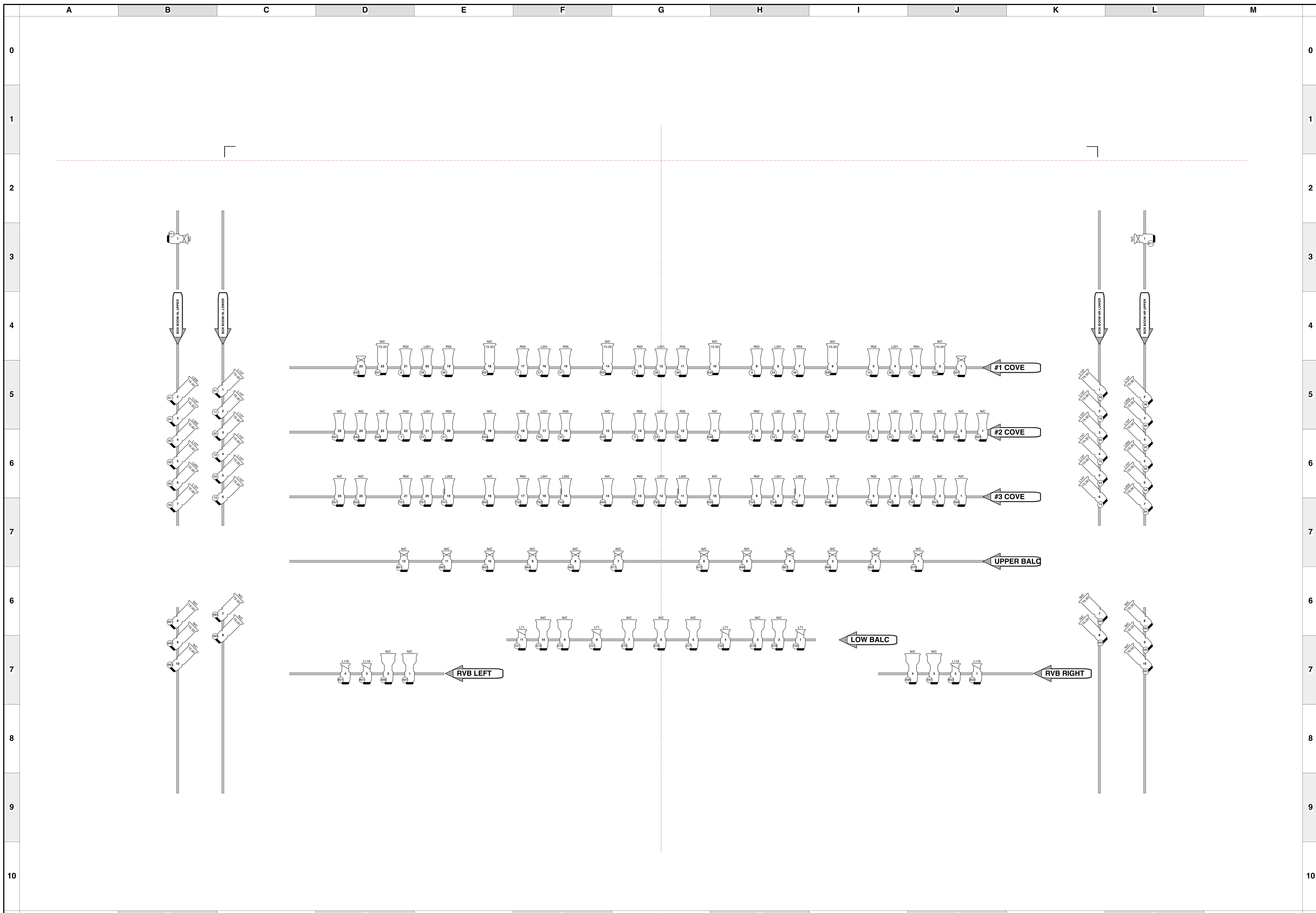
DIRECTOR OF OPERATIONS: CJ MARSHALL  
 DIRECTOR OF PRODUCTION: GERRARD SIEGLER  
 HOUSE ELECTRICIAN: JESSE PERKINS  
 HOUSE ELECTRICIAN: LESLIE ENDERMAN  
 STRAZ CENTER FOR THE PERFORMING ARTS - TAMPA, FLORIDA, USA

**FERGUSON HALL**

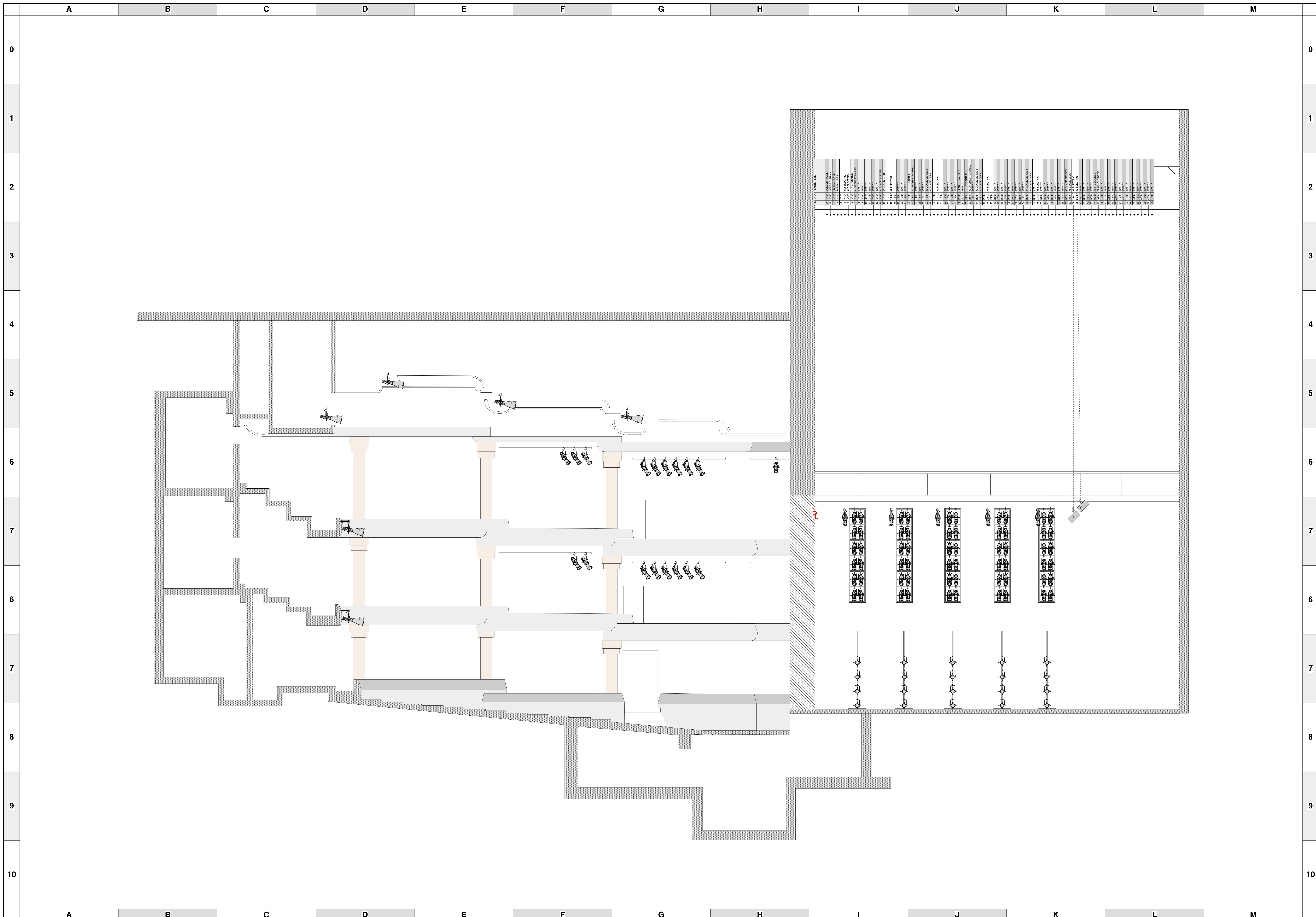
DECK/BOOM/LADDER LIGHTING PLAN

DATE: 17 MAY 2019  
 SCALE: 1/2" = 1'  
 PG SIZE: 36"x48"

2



<p><b>KEY TO INSTRUMENTATION</b></p>	<p><b>GENERAL NOTES</b></p> <p>- Instruments hung at 10' unless otherwise noted herein.</p> <p>- Please see lighting paperwork for all hookup details.</p>	<p><b>LEGEND</b></p> <p>ABBREVIATIONS:  R = Rigger  G = GDM  A = Apollo  GP = Grand Plan  LD = Light Dimmer  LD = Lighting Design</p> <p>COLOR: CLR  TEMPLATE: X  UNIT: 4  CHANNEL: 4</p>	<p><b>STRAZ CENTER</b>  IT'S MORE THAN JUST A SHOW.  1010 N. MACINNES PLACE - TAMPA, FL 33607</p> <p><b>CELEBRATING 30 YEARS</b></p>	<p><b>MIKE WOOD LIGHTING DESIGN</b>  1141 Broadway NYC - New York, NY 10007  444-694-8656 Studio  LD#10574</p>	<p><b>PRODUCTION STAFF</b></p> <p>DIRECTOR OF OPERATIONS: CJ MARSHALL  DIRECTOR OF PRODUCTION: GERARD SIEGLER  HOUSE ELECTRICIAN: RESSE PERKINS  HOUSE ELECTRICIAN: LESLIE ENDERMAN  STRAZ CENTER FOR THE PERFORMING ARTS - TAMPA, FLORIDA, USA.</p>	<p><b>FERGUSON HALL</b></p> <p><b>FOH LIGHTING PLOT</b></p> <p>DATE: 17 MAY 2019  SCALE: 1/2" = 1'  PG SIZE: 36"x48"</p> <p>3</p>
--------------------------------------	--	---	--	--	--	---



KEY TO INSTRUMENTATION

10	10' x 10' PARABOLIC
11	10' x 10' PARABOLIC
12	10' x 10' PARABOLIC
13	10' x 10' PARABOLIC
14	10' x 10' PARABOLIC
15	10' x 10' PARABOLIC
16	10' x 10' PARABOLIC
17	10' x 10' PARABOLIC
18	10' x 10' PARABOLIC
19	10' x 10' PARABOLIC
20	10' x 10' PARABOLIC
21	10' x 10' PARABOLIC
22	10' x 10' PARABOLIC
23	10' x 10' PARABOLIC
24	10' x 10' PARABOLIC
25	10' x 10' PARABOLIC
26	10' x 10' PARABOLIC
27	10' x 10' PARABOLIC
28	10' x 10' PARABOLIC
29	10' x 10' PARABOLIC
30	10' x 10' PARABOLIC
31	10' x 10' PARABOLIC
32	10' x 10' PARABOLIC
33	10' x 10' PARABOLIC
34	10' x 10' PARABOLIC
35	10' x 10' PARABOLIC
36	10' x 10' PARABOLIC
37	10' x 10' PARABOLIC
38	10' x 10' PARABOLIC
39	10' x 10' PARABOLIC
40	10' x 10' PARABOLIC
41	10' x 10' PARABOLIC
42	10' x 10' PARABOLIC
43	10' x 10' PARABOLIC
44	10' x 10' PARABOLIC
45	10' x 10' PARABOLIC
46	10' x 10' PARABOLIC
47	10' x 10' PARABOLIC
48	10' x 10' PARABOLIC
49	10' x 10' PARABOLIC
50	10' x 10' PARABOLIC
51	10' x 10' PARABOLIC
52	10' x 10' PARABOLIC
53	10' x 10' PARABOLIC
54	10' x 10' PARABOLIC
55	10' x 10' PARABOLIC
56	10' x 10' PARABOLIC
57	10' x 10' PARABOLIC
58	10' x 10' PARABOLIC
59	10' x 10' PARABOLIC
60	10' x 10' PARABOLIC
61	10' x 10' PARABOLIC
62	10' x 10' PARABOLIC
63	10' x 10' PARABOLIC
64	10' x 10' PARABOLIC
65	10' x 10' PARABOLIC
66	10' x 10' PARABOLIC
67	10' x 10' PARABOLIC
68	10' x 10' PARABOLIC
69	10' x 10' PARABOLIC
70	10' x 10' PARABOLIC
71	10' x 10' PARABOLIC
72	10' x 10' PARABOLIC
73	10' x 10' PARABOLIC
74	10' x 10' PARABOLIC
75	10' x 10' PARABOLIC
76	10' x 10' PARABOLIC
77	10' x 10' PARABOLIC
78	10' x 10' PARABOLIC
79	10' x 10' PARABOLIC
80	10' x 10' PARABOLIC
81	10' x 10' PARABOLIC
82	10' x 10' PARABOLIC
83	10' x 10' PARABOLIC
84	10' x 10' PARABOLIC
85	10' x 10' PARABOLIC
86	10' x 10' PARABOLIC
87	10' x 10' PARABOLIC
88	10' x 10' PARABOLIC
89	10' x 10' PARABOLIC
90	10' x 10' PARABOLIC
91	10' x 10' PARABOLIC
92	10' x 10' PARABOLIC
93	10' x 10' PARABOLIC
94	10' x 10' PARABOLIC
95	10' x 10' PARABOLIC
96	10' x 10' PARABOLIC
97	10' x 10' PARABOLIC
98	10' x 10' PARABOLIC
99	10' x 10' PARABOLIC
100	10' x 10' PARABOLIC

<p>KEY TO INSTRUMENTATION</p>	<p><b>GENERAL NOTES</b></p> <ul style="list-style-type: none"> <li>- Instruments hung at 10' unless otherwise noted herein.</li> <li>- Please see lighting paperwork for all hookup details.</li> </ul>	<p><b>LEGEND</b></p> <p>ABBREVIATIONS:</p> <ul style="list-style-type: none"> <li>R = Recess</li> <li>G = GYM</li> <li>A = Apollo</li> <li>GP = Grand Plan</li> <li>LD = Light Dimmer</li> <li>LD = Light Dimmer</li> <li>LD = Light Dimmer</li> </ul>	<p><b>STRAZ CENTER</b></p> <p>1010 N. MACINNES PLACE - TAMPA, FL 33607</p> <p><b>CELEBRATING 30 YEARS</b></p>	<p><b>MIKE WOOD LIGHTING DESIGN</b></p> <p>3111 Broadway NYC - New York, NY 10007</p> <p>464-694-8656 Studio</p> <p>LD#10574</p>	<p><b>PRODUCTION STAFF</b></p> <p>DIRECTOR OF OPERATIONS: CJ MARSHALL</p> <p>DIRECTOR OF PRODUCTION: GERARD SIEGLER</p> <p>HOUSE ELECTRICIAN: JESSE PERKINS</p> <p>HOUSE ELECTRICIAN: LESLIE ENDERMAN</p> <p>STRAZ CENTER FOR THE PERFORMING ARTS - TAMPA, FLORIDA, USA</p>	<p><b>FERGUSON HALL</b></p> <p>SECTION THROUGH CL</p> <p>DATE: 17 MAY 2019</p> <p>SCALE: 1/4" = 1'</p> <p>PG SIZE: 36"x48"</p> <p>DRAWING NUMBER: 4</p>
-------------------------------	---	--	---	--	---	---