

KEY TO INSTRUMENTATION

	VariLite VL3500 Spot	7
	VariLite VL3500 Wash	5
	D60 ETC WIDE OVAL	2
	ETC Source 4 5°	5
	ETC Source 4 10°	6
	ETC Source 4 14°	10
	ETC Source 4 19°	38
	ETC Source 4 26°	33
	ETC Source 4 36°	53
	SeaChanger Tungsten 36°	2
	ETC Source 4 50°	8
	SeaChanger Tungsten 50°	2
	ETC Source 4 PARnel	45
	ETC Source 4 PAR (VNSP)	2
	ETC Source 4 PAR (NSP)	2
	ETC Source 4 PAR (MFL)	2
	ETC Source 4 PAR (WFL)	2
	USITT PAR64-WFL	9
	MR16 Birdie	0
	Spectra Cyc 100 RGBA	13
	Altman Zip Strip 4 Circuit	15
	PAR56 Bordenlight B 3 Cir	3

GENERAL NOTES

- Please have ample R119, R132, and blackwrap available at focus call.
- Please have all color, templates, and accessories framed and loaded prior to focus. See Channel Hookup and Instrument Schedule for details.
- Please have top hats and barn doors on hand at focus call - all sizes.
- Instruments hung on 18" centers unless otherwise noted herein.

LEGEND

ABBREVIATIONS:
 R = Rosco
 G = GAM
 A = Apollo
 LS = Line Set
 GP = Ground Plan
 LX = Electric
 TD = Tech. Direct.
 LD = Lighting Dsgnr

FOCUS:
 COLOR
 CLB

LENSE:
 TEMPLATE
 UNIT #
 CHANNEL #

SIDE SHOW BLAKE THEATRE
 NOVEMBER 2017

MIKE WOOD LIGHTING DESIGN
 813-716-1909 Cell | 212-812-8781 Studio
 3161 Broadway #2C - New York, NY 10007
 LD# 10574

REVISION HISTORY

NO.	REVISION	DATE	BY
001	Document Prep	28 SEP17	AM
002	Scene Report	1 OCT17	AM
003	Sketch Draft	14 OCT17	AM
004	Submission Paperwork - Load in R01	15 OCT17	AM
005	Change - Load in R02	28 OCT17	AM

SIDE SHOW

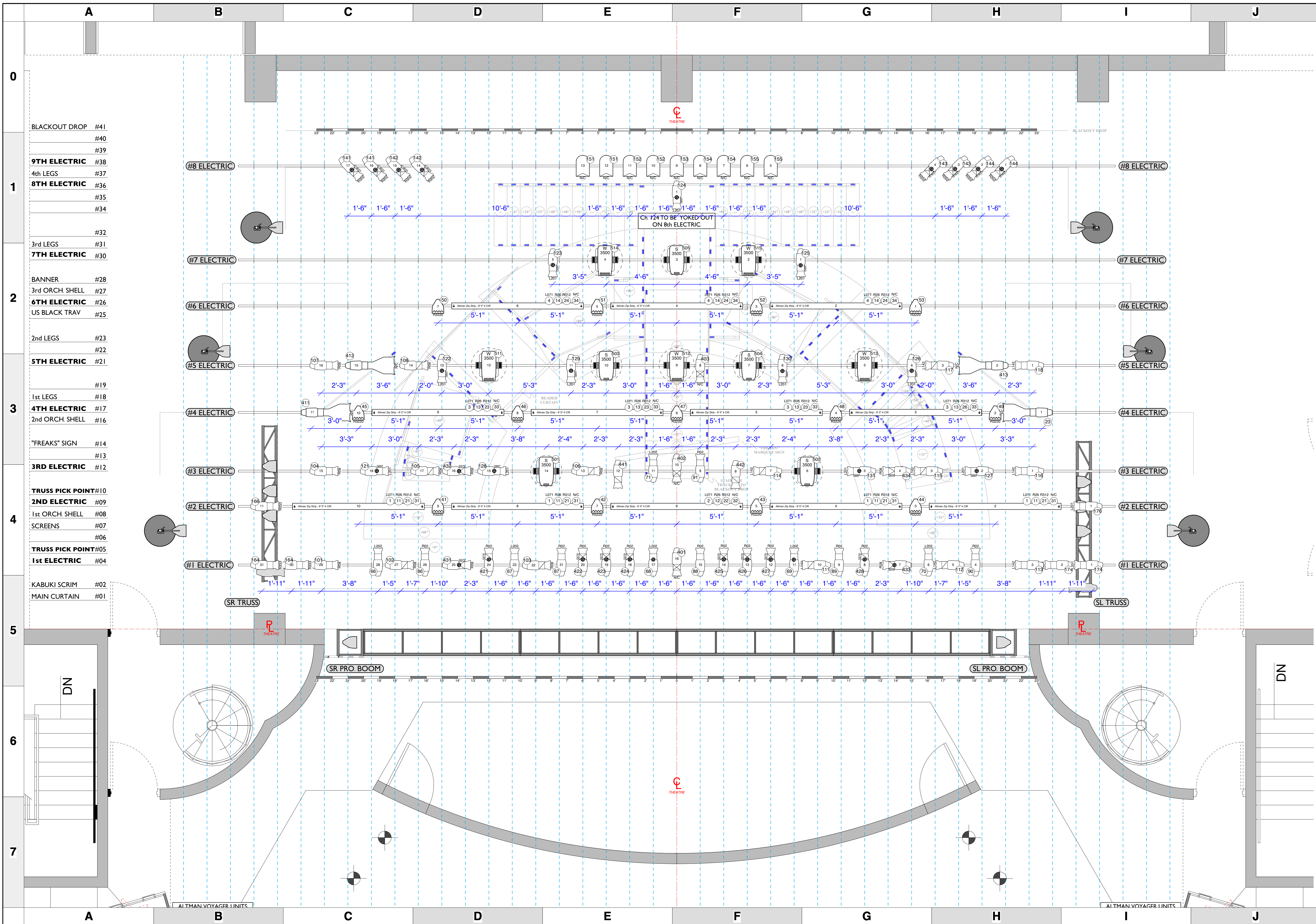
PRODUCTION STAFF

DIRECTOR SEAN RYAN PARIS
 LIGHTING DESIGNER MIKE WOOD
 ASSOC LIGHTING DESIGNER ABBY MAY
 ASST LIGHTING DESIGNER BEN PHILLIPS
 PROGRAMMER JAKE PRICE
 PROD. ELEC ANTHONY LEFEBVRE

- HWB SCHOOL OF THE ARTS -
 DON THOMPSON THEATRE // TAMPA, FL

SCALE 3/8" = 1'
 PG SIZE 24 x 36
 LIGHTING PLOT OVERSTAGE HANG

PAGE # **1** OF 7



KEY TO INSTRUMENTATION

	VariLite VL3500 Spot	7
	VariLite VL3500 Wash	5
	D60 ETC WIDE OVAL	2
	ETC Source 4 5°	5
	ETC Source 4 10°	6
	ETC Source 4 14°	10
	ETC Source 4 19°	38
	ETC Source 4 26°	33
	ETC Source 4 36°	53
	SeaChanger Tungsten 36°	2
	ETC Source 4 50°	8
	SeaChanger Tungsten 50°	2
	ETC Source 4 PARnel	45
	ETC Source 4 PAR (VNSP)	2
	ETC Source 4 PAR (NSP)	2
	ETC Source 4 PAR (MFL)	2
	ETC Source 4 PAR (WFL)	2
	USITT PAR64-WFL	9
	MR16 Birdie	0
	Spectra Cyc 100 RGBA	13
	Altman Zip Strip 4 Circuit	15
	PAR56 Bordenlight B 3 Cir	3

GENERAL NOTES

- Please have ample R119, R132, and blackwrap available at focus call.
- Please have all color, templates, and accessories framed and loaded prior to focus. See Channel Hookup and Instrument Schedule for details.
- Please have top hats and barn doors on hand at focus call - all sizes.
- Instruments hung on 18" centers unless otherwise noted herein.

LEGEND

ABBREVIATIONS:	FOCUS COLOR:
R = Rosco	FOC
G = GAM	CLB
A = Apollo	
LS = Line Set	TEMPLATE:
GP = Ground Plan	UNIT #:
LX = Electric	CHANNEL #:
TD = Tech. Direct.	
LD = Lighting Dsgnr	

SIDE SHOW BLAKE THEATRE
NOVEMBER 2017

MIKE WOOD LIGHTING DESIGN
3161 Broadway #2C - New York, NY 10007
813-716-1909 Cell: 212-812-8781 Studio
LD#10574

REVISION HISTORY

NO.	REVISION	DATE	BY
001	Document Prep	12 SEP 17	AM
002	Scene Report	1 OCT 17	AM
003	Stage Plot	14 OCT 17	AM
004	Submission Paperwork - Load in R01	15 OCT 17	AM
005	Change - Load in R02	28 OCT 17	AM

SIDE SHOW

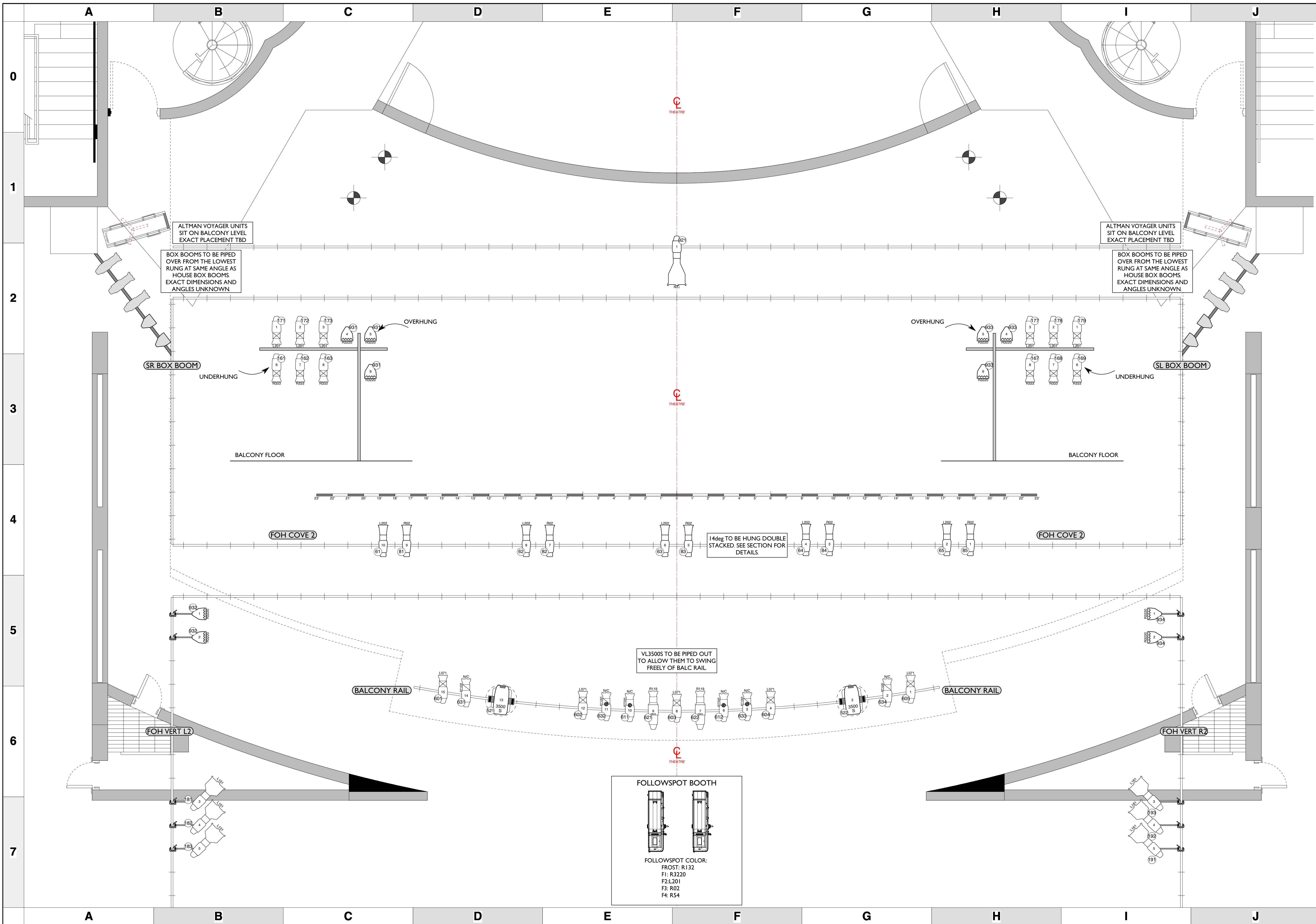
PRODUCTION STAFF

DIRECTOR SEAN RYAN PARIS
 LIGHTING DESIGNER MIKE WOOD
 ASSOC LIGHTING DESIGNER ABBY MAY
 ASST LIGHTING DESIGNER BEN PHILLIPS
 PROGRAMMER JAKE PRICE
 PROD. ELEC ANTHONY LEFEBVRE

- HWB SCHOOL OF THE ARTS -
DON THOMPSON THEATRE // TAMPA, FL

SCALE 3/8" = 1'
 PG SIZE 24 x 36
 PAGE # **1B** OF 7

LIGHTING PLOT
OVERSTAGE HANG WITH GUIDES



KEY TO INSTRUMENTATION		
	VariLite VL3500 Spot	7
	VariLite VL3500 Wash	5
	D60 ETC WIDE OVAL	2
	ETC Source 4 5°	5
	ETC Source 4 10°	6
	ETC Source 4 14°	10
	ETC Source 4 19°	38
	ETC Source 4 26°	33
	ETC Source 4 36°	53
	SeaChanger Tungsten 36°	2
	ETC Source 4 50°	8
	SeaChanger Tungsten 50°	2
	ETC Source 4 PARnel	45
	ETC Source 4 PAR (VNSP)	2
	ETC Source 4 PAR (NSP)	2
	ETC Source 4 PAR (MFL)	2
	ETC Source 4 PAR (WFL)	2
	USITT PAR64-WFL	9
	MR16 Birdie	0
	Spectra Cyc 100 RGBA	13
	Altmán Zip Strip 4 Circuit	15
	PAR56 Bordenlight 8' 3 Cir	3

GENERAL NOTES

- Please have ample R119, R132, and blackrap available at focus call.
- Please have all color, templates, and accessories framed and loaded prior to focus. See Channel Hookup and Instrument Schedule for details.
- Please have top hats and barn doors on hand at focus call - all sizes.
- Instruments hung on 18" centers unless otherwise noted herein.

LEGEND

ABBREVIATIONS:	FOCUS COLOR:
R = Rosco	FOC CLB
G = GAM	FOC CLR
A = Apollo	FOC CRB
LS = Line Set	FOC CRG
GP = Ground Plan	FOC CRP
LX = Electric	FOC CRY
TD = Tech. Direct.	FOC CRZ
LD = Lighting Dsgnr.	FOC CRW

SIDE SHOW BLAKE THEATRE
NOVEMBER 2017

MIKE WOOD LIGHTING DESIGN
813-716-1909 Call / 212-812-8781 Studio
3161 Broadway #2C - New York NY 10007
LD#10574

REVISION HISTORY

NO.	REVISION	DATE	BY
1	Document Prep	28 SEP 17	AM
2	Scene Input	1 OCT 17	AM
3	Sketch Input	14 OCT 17	AM
4	Submission Paperwork - Load in R01	15 OCT 17	AM
5	Change - Load in R02	28 OCT 17	AM

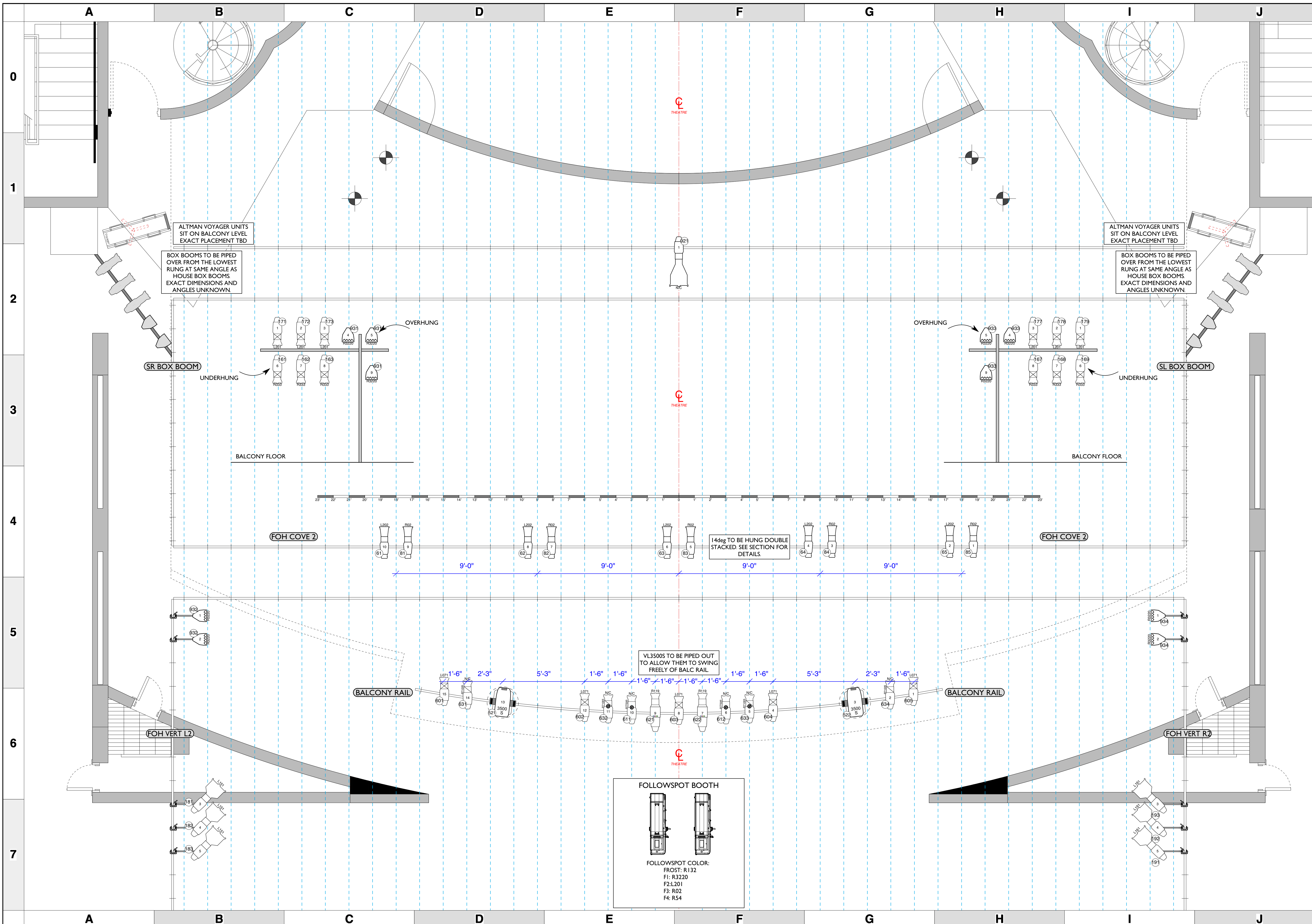
SIDE SHOW

PRODUCTION STAFF

DIRECTOR SEAN RYAN PARIS
 LIGHTING DESIGNER MIKE WOOD
 ASSOC LIGHTING DESIGNER ABBY MAY
 ASST LIGHTING DESIGNER BEN PHILLIPS
 PROGRAMMER JAKE PRICE
 PROD. ELEC ANTHONY LEFEBVRE

- HWB SCHOOL OF THE ARTS -
DON THOMPSON THEATRE // TAMPA, FL

SCALE 3/8" = 1'
 PG SIZE 24 x 36
 LIGHTING PLOT
 FOH HANG



KEY TO INSTRUMENTATION		
	VariLite VL3500 Spot	7
	VariLite VL3500 Wash	5
	D60 ETC WIDE OVAL	2
	ETC Source 4 5°	5
	ETC Source 4 10°	6
	ETC Source 4 14°	10
	ETC Source 4 19°	38
	ETC Source 4 26°	33
	ETC Source 4 36°	53
	SeaChanger Tungsten 36°	2
	ETC Source 4 50°	8
	SeaChanger Tungsten 50°	2
	ETC Source 4 PARnel	45
	ETC Source 4 PAR (VNSP)	2
	ETC Source 4 PAR (NSP)	2
	ETC Source 4 PAR (MFL)	2
	ETC Source 4 PAR (WFL)	2
	USITT PAR64-WFL	9
	MR16 Birdie	0
	Spectra Cyc 100 RGBA	13
	Altman Zip Strip 4 Circuit	15
	PAR56 Bordenlight 8' 3 Cir	3

GENERAL NOTES

- Please have ample R119, R132, and blackwrap available at focus call.
- Please have all color, templates, and accessories framed and loaded prior to focus. See Channel Hookup and Instrument Schedule for details.
- Please have top hats and barn doors on hand at focus call - all sizes.
- Instruments hung on 18" centers unless otherwise noted herein.

LEGEND

ABBREVIATIONS:	FOCUS COLOR:	FOC CLB:
R = Rosco	A = Apollo	LS = Line Set
GP = Ground Plan	LX = Electric	TD = Tech. Direct.
LD = Lighting Design		

SIDE SHOW BLAKE THEATRE
NOVEMBER 2017

MIKE WOOD LIGHTING DESIGN
LD#10574

REVISION HISTORY

NO.	REVISION	DATE	BY
1	Document Prep	12 SEP 17	AM
2	Source Import	1 OCT 17	AM
3	Source Edit	14 OCT 17	AM
4	Submission Paperwork - Load in R01	15 OCT 17	AM
5	Change - Load in R02	26 OCT 17	AM

SIDE SHOW

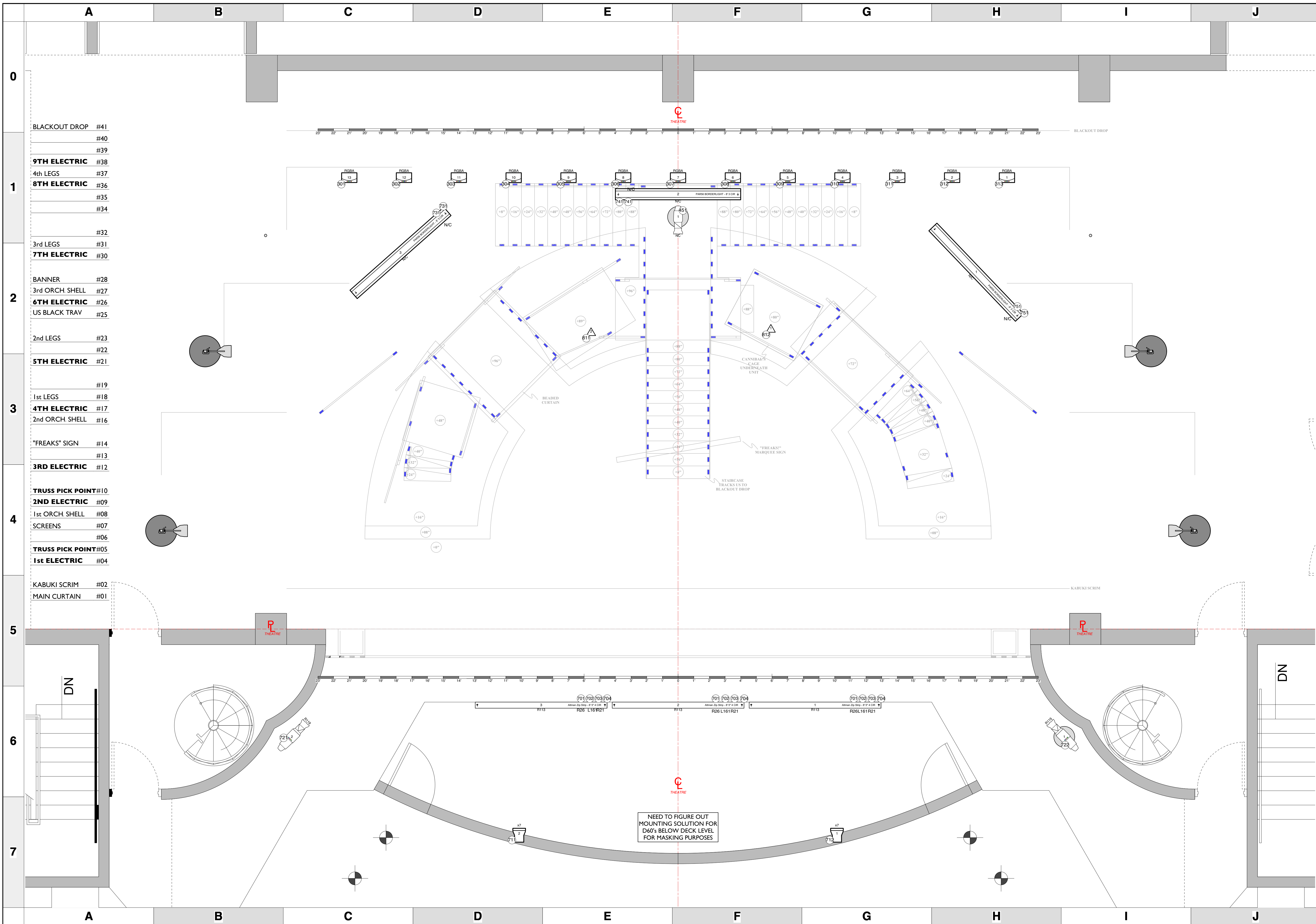
PRODUCTION STAFF

DIRECTOR: SEAN RYAN PARIS
 LIGHTING DESIGNER: MIKE WOOD
 ASSOC LIGHTING DESIGNER: ABBY MAY
 ASST LIGHTING DESIGNER: BEN PHILLIPS
 PROGRAMMER: JAKE PRICE
 PROD. ELEC: ANTHONY LEFEBVRE

- HWB SCHOOL OF THE ARTS -
DON THOMPSON THEATRE // TAMPA, FL

SCALE 3/8" = 1'
 PG SIZE 24 x 36
2B
 OF 7

LIGHTING PLOT
FOH HANG WITH GUIDES



KEY TO INSTRUMENTATION

	VariLite VL3500 Spot	7
	VariLite VL3500 Wash	5
	D60 ETC WIDE OVAL	2
	ETC Source 4 5°	5
	ETC Source 4 10°	6
	ETC Source 4 14°	10
	ETC Source 4 19°	38
	ETC Source 4 26°	33
	ETC Source 4 36°	53
	SeaChanger Tungsten 36°	2
	ETC Source 4 50°	8
	SeaChanger Tungsten 50°	2
	ETC Source 4 PARnel	45
	ETC Source 4 PAR (VNSP)	2
	ETC Source 4 PAR (NSP)	2
	ETC Source 4 PAR (MFL)	2
	ETC Source 4 PAR (WFL)	2
	USITT PAR64-WFL	9
	MR16 Birdie	0
	Spectra Cyc 100 RGBA	13
	Altman Zip Strip 4 Circuit	15
	PAR56 Boredomlight B 3 Cir	3

GENERAL NOTES

- Please have ample R119, R132, and blackwrap available at focus call.
- Please have all color, templates, and accessories framed and loaded prior to focus. See Channel Hookup and Instrument Schedule for details.
- Please have top hats and barn doors on hand at focus call - all sizes.
- Instruments hung on 18" centers unless otherwise noted herein.

LEGEND

ABBREVIATIONS:

- R = Rosco
- G = GAM
- A = Apollo
- LS = Line Set
- GP = Ground Plan
- LX = Electric
- TD = Tech. Direct.
- LD = Lighting Dsgnr

FOCUS:

- COLOR
- CLB

LENSE:

- TEMPLATE

UNIT #:

- U#

CHANNEL #:

- CH#

SIDE SHOW **BLAKE THEATER**
NOVEMBER 2017

MIKE WOOD LIGHTING DESIGN
http://www.mikewoodlighting.com
813-716-1909 Cell / 212-812-8781 Studio
3161 Broadway #2C - New York NY 10007
LD#10574

REVISION HISTORY

NO.	REVISION	DATE	BY
001	Document Prep	12 SEP 17	AM
002	Scene Report	1 OCT 17	AM
003	Stage Draft	14 OCT 17	AM
004	Submission Paperwork - Load in R01	15 OCT 17	AM
005	Change - Load in R02	29 OCT 17	AM

SIDE SHOW

PRODUCTION STAFF

DIRECTOR SEAN RYAN PARIS

LIGHTING DESIGNER MIKE WOOD

ASSOC LIGHTING DESIGNER ABBY MAY

ASST LIGHTING DESIGNER BEN PHILLIPS

PROGRAMMER JAKE PRICE

PROD. ELEC ANTHONY LEFEBVRE

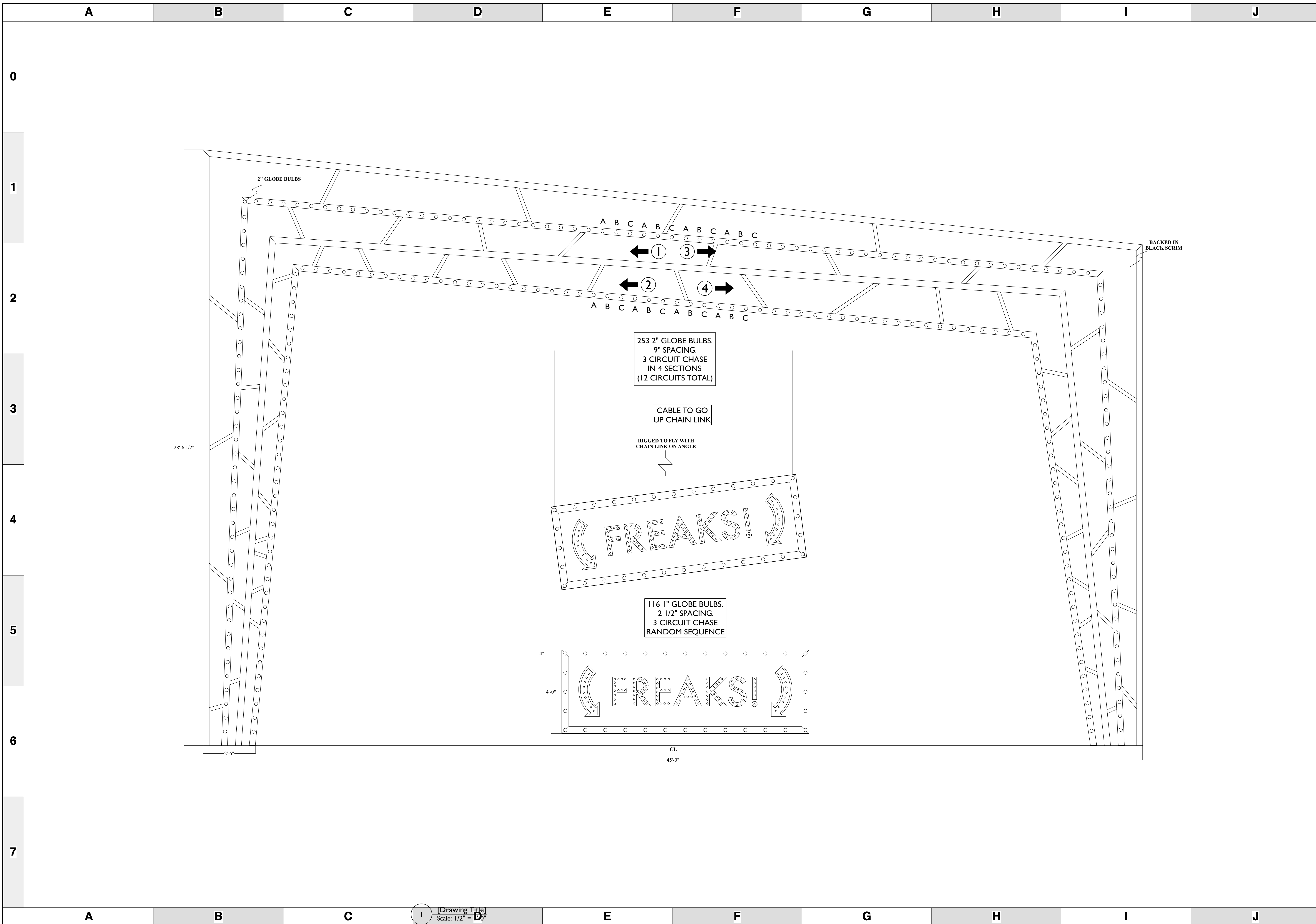
- HWB SCHOOL OF THE ARTS -
DON THOMPSON THEATRE // TAMPA, FL

SCALE 3/8" = 1'

PG SIZE 24 x 36

PAGE # **4** OF 7

LIGHTING PLOT
DECK AND SCENIC



KEY TO INSTRUMENTATION

GENERAL NOTES

- Please have ample R119, R132, and blackwrap available at focus call.
- Please have all color, templates, and accessories framed and loaded prior to focus. See Channel Hookup and Instrument Schedule for details.
- Please have top hats and barn doors on hand at focus call - all sizes.
- Instruments hung on 18" centers unless otherwise noted herein.

LEGEND

ABBREVIATIONS:
 R = Rosco
 G = GAM
 A = Apollo
 LS = Line Set
 GP = Ground Plan
 LX = Electric
 TD = Tech. Direct.
 LD = Lighting Dsgnr

FOCUS COLOR: FOC, CLR
LENS: LENS
TEMPLATE: TEMPLATE
UNIT #: UNIT #
CHANNEL #: CHANNEL #

SIDE SHOW **BLAKE THEATER** **NOVEMBER 2017**

MIKE WOOD LIGHTING DESIGN
 LD#10574

REVISION HISTORY

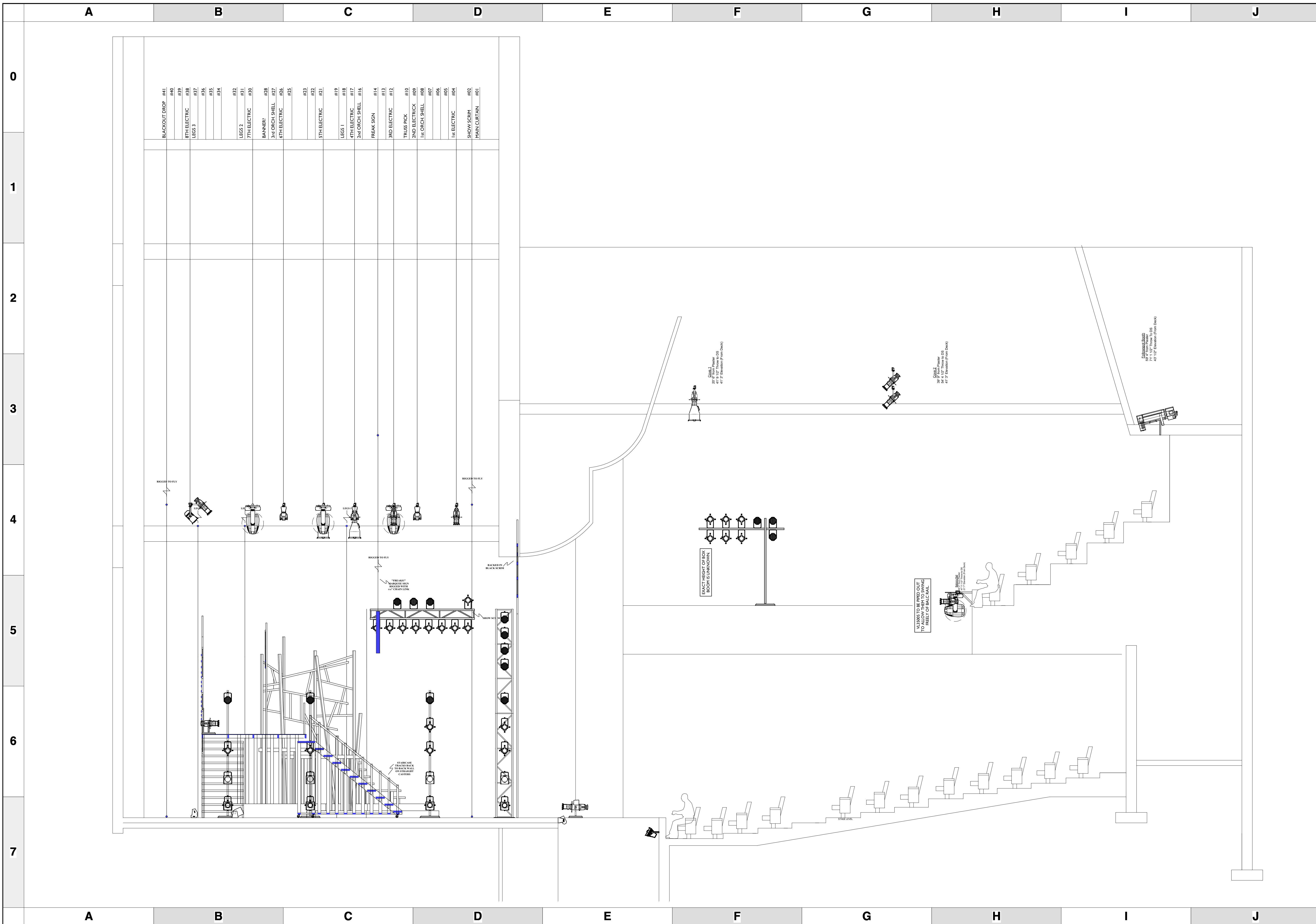
NO.	REVISION	DATE	BY
001	Document Prep	28 SEP17	AM
002	Scene Import	1 OCT17	AM
003	Stage Draft	14 OCT17	AM
004	Submission Paperwork - Load in H01	15 OCT17	AM
005	Change - Load in H02	29 OCT17	AM

PRODUCTION STAFF

DIRECTOR SEAN RYAN PARIS
 LIGHTING DESIGNER MIKE WOOD
 ASSOC LIGHTING DESIGNER ABBY MAY
 ASST LIGHTING DESIGNER BEN PHILLIPS
 PROGRAMMER JAKE PRICE
 PROD. ELEC ANTHONY LEFEBVRE

- HWB SCHOOL OF THE ARTS -
 DON THOMPSON THEATRE // TAMPA, FL

SCALE 1/2" = 1'
 PG SIZE 24 x 36
 LIGHTING PLOT SCENIC PRACTICALS



KEY TO INSTRUMENTATION		
	VariLite VL3500 Spot	7
	VariLite VL3500 Wash	5
	D60 ETC WIDE OVAL	2
	ETC Source 4 5°	5
	ETC Source 4 10°	6
	ETC Source 4 14°	10
	ETC Source 4 19°	38
	ETC Source 4 26°	33
	ETC Source 4 36°	53
	SeaChanger Tungsten 36°	2
	ETC Source 4 50°	8
	SeaChanger Tungsten 50°	2
	ETC Source 4 PAR/nel	45
	ETC Source 4 PAR (VNSP)	2
	ETC Source 4 PAR (NSP)	2
	ETC Source 4 PAR (MFL)	2
	ETC Source 4 PAR (WFL)	2
	USITT PAR64-WFL	9
	MR16 Birdie	0
	Spectra Cyc 100 RGBA	13
	Altman Zip Strip 4 Circuit	15
	PAR56 Bordenight 8' 3 Cir	3

GENERAL NOTES

- Please have ample R119, R132, and blackwrap available at focus call.
- Please have all color, templates, and accessories framed and loaded prior to focus. See Channel Hookup and Instrument Schedule for details.
- Please have top hats and barn doors on hand at focus call - all sizes.
- Instruments hung on 18" centers unless otherwise noted herein.

LEGEND

ABBREVIATIONS:	FOCUS:
R = Rosco	COLOR
G = GAM	COLOR
A = Apollo	LENS
LS = Line Set	TEMPLATE
GP = Ground Plan	UNIT #
LX = Electric	U#
TD = Tech. Direct.	CHANNEL #
LD = Lighting Design	

SIDE SHOW **BLAKE THEATRE**
 NOVEMBER 2017

MIKE WOOD LIGHTING DESIGN
 LD#10574

REVISION HISTORY

NO.	REVISION	DATE	BY
1	Document Prep	28 SEP 17	AM
2	Scene Input	1 OCT 17	AM
3	Sketch Draft	14 OCT 17	AM
4	Submission Paperwork - Load in H01	15 OCT 17	AM
5	Change - Load in H02	29 OCT 17	AM

SIDE SHOW

PRODUCTION STAFF

DIRECTOR SEAN RYAN PARIS

LIGHTING DESIGNER MIKE WOOD

ASSOC LIGHTING DESIGNER ABBY MAY

ASST LIGHTING DESIGNER BEN PHILLIPS

PROGRAMMER JAKE PRICE

PROD. ELEC ANTHONY LEFEBVRE

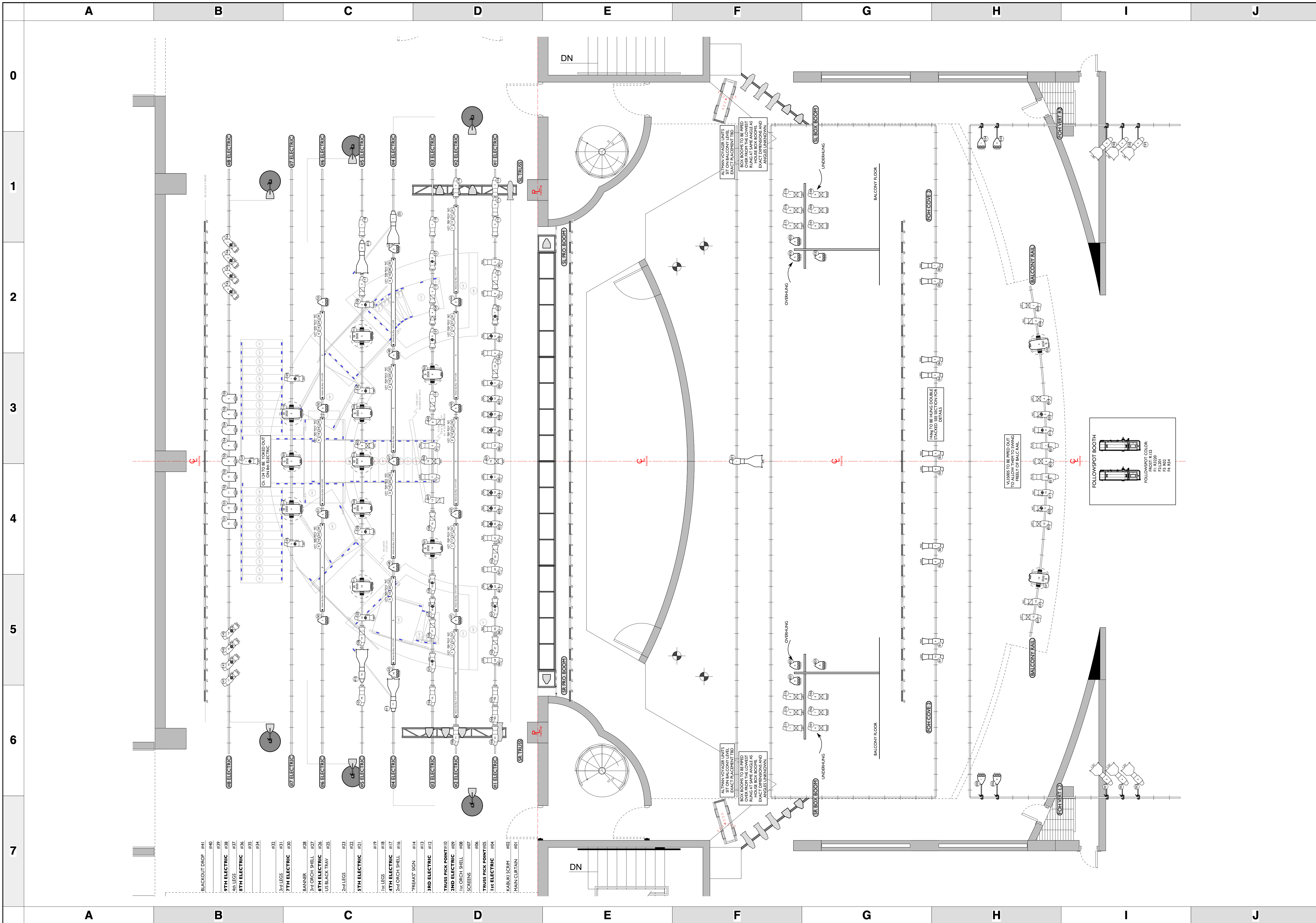
- HWB SCHOOL OF THE ARTS -
 DON THOMPSON THEATRE // TAMPA, FL

SCALE 1/4" = 1'

PG SIZE 24 x 36

PAGE # **6** OF 7

LIGHTING SECTION
 THROUGH CL TO SL



KEY TO INSTRUMENTATION

	VariLite VL3500 Spot	7
	VariLite VL3500 Wash	5
	D60 ETC WIDE OVAL	2
	ETC Source 4 5°	5
	ETC Source 4 10°	6
	ETC Source 4 14°	10
	ETC Source 4 19°	38
	ETC Source 4 26°	33
	ETC Source 4 36°	53
	SeaChanger Tungsten 36°	2
	ETC Source 4 50°	8
	SeaChanger Tungsten 50°	2
	ETC Source 4 PARnel	45
	ETC Source 4 PAR (VNSP)	2
	ETC Source 4 PAR (NSP)	2
	ETC Source 4 PAR (MFL)	2
	ETC Source 4 PAR (WFL)	2
	USITT PAR64-WFL	9
	MR16 Birdie	0
	Spectra Cyc 100 RGBA	13
	Altman Zip Strip 4 Circuit	15
	PAR56 Bordenight 8' 3 Cir	3

GENERAL NOTES

- Please have ample R119, R132, and blackwrap available at focus call.
- Please have all color, templates, and accessories framed and loaded prior to focus. See Channel Hookup and Instrument Schedule for details.
- Please have top hats and barn doors on hand at focus call - all sizes.
- Instruments hung on 18" centers unless otherwise noted herein.

LEGEND

ABBREVIATIONS:	FOCUS COLOR:
R = Rosco	FOC
G = GAM	CLB
A = Apollo	LENSE
LS = Line Set	TEMPLATE
GP = Ground Plan	UNIT #
LX = Electric	CHANNEL #
TD = Tech. Direct.	
LD = Lighting Dsgnr	

SIDE SHOW **BLAKE THEATER**
NOVEMBER 2017

MIKE WOOD LIGHTING DESIGN
http://www.mikewoodld.com
813-716-1909 Cell: 212-812-8781 Studio
3161 Broadway #2C - New York NY 10027
LD#10574

REVISION HISTORY

NO.	REVISION	DATE	BY
1	Documenting	28 SEP 17	AM
2	Scene Input	1 OCT 17	AM
3	Stage Input	14 OCT 17	AM
4	Submission Paperwork - Load in HSI	15 OCT 17	AM
5	Change - Load in HSI	29 OCT 17	AM

SIDE SHOW

PRODUCTION STAFF

DIRECTOR SEAN RYAN PARIS
 LIGHTING DESIGNER MIKE WOOD
 ASSOC LIGHTING DESIGNER ABBY MAY
 ASST LIGHTING DESIGNER BEN PHILLIPS
 PROGRAMMER JAKE PRICE
 PROD. ELEC ANTHONY LEFEBVRE

SCALE 1/4" = 1' **PAGE # 7**
 PG SIZE 24 x 36 **OF 7**

LIGHTING PLOT
FULL SITE PLAN