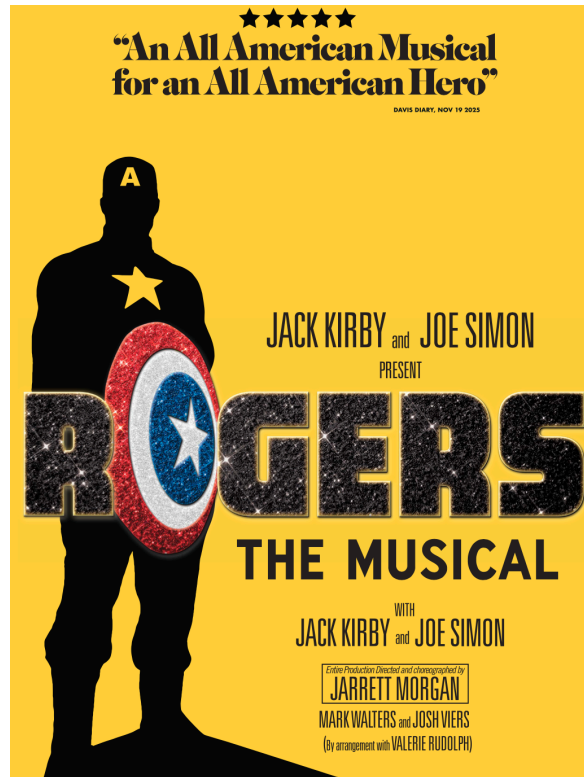


MARVEL STUDIOS
ANCHOR POINT - ROGERS THE MUSICAL
FOX THEATRE - ATLANTA, GA



LIGHTING EQUIPMENT LIST
REVISION 1 - 31 MARCH 2021
FOR BID ONLY



I. General Terms and Conditions

- a. This list supersedes any previous issue as of 31 Mar 2021
- b. All substitutions must be fully disclosed at the time of quote
- c. All units to be in good working order at the time of delivery with matching lamps
- d. All units to be supplied with manufacturer color frames, hanging hardware, and safety cables
- e. All fixtures, accessories, and hardware to be finished in flat black unless specified herein.
- f. All fixtures to come installed with specified lamps, connectors, and other accessories unless otherwise specified herein. All dimmable fixtures should assume stage pin connectors and all non dimmable fixtures should assume L6-20 Twistlock
- g. Abbreviations used throughout:
 - i. LD – *Lighting Designer*
 - ii. ALD – *Associate Lighting Designer*
 - iii. PM – *Production Manager*
 - iv. MWLD – *Mike Wood Lighting Design (Design Firm)*
 - v. SHOP – *Lighting Rental Shop*

II. Dates

- | | | |
|----------------------|----------------|----------------------------|
| a. SHOP PREP | Monday/Tuesday | 5/6 April 2021 |
| b. LOAD IN/DELIVERY: | Wednesday | 7 April 2021 |
| c. LOAD OUT/RETURN | TBD | On or Around 17 April 2021 |

III. Times

- a. All equipment to be delivered by shop onsite by 8:00am Eastern Time on load in day in coordination with LD and PM
- b. Load out time TBD

IV. Extent of Services

- a. SHOP shall not be required to do any load in or load out work.
- b. SHOP to deliver/pickup all equipment directly to show site.
- c. Quotes to be inclusive of all shipping costs.

V. Shop Prep

- a. SHOP will supply the following personnel for the duration of the shop prep call:
 - i. 1 x Crew Lead (coordinated with LD)
 - ii. 3 x Electricians
- b. SHOP to provide, at PRODUCER'S expense, customary expendables for shop prep, including gaffer's tape, black trick line, clear JLAR tape, etc.
- c. TENTATIVE SHOP Schedule 8am - 5pm (1 Hour Lunch Break)

CONTACT INFORMATION

LIGHTING DIRECTOR (ON-SITE CONTACT)

MIKE WOOD

ASSOCIATE LIGHTING DESIGNER / PROGRAMMER

DALTON HAMILTON

UNIT PRODUCTION MANAGER

NADIA PAINE

VENUE:

The Fox Theatre
660 Peachtree Street NE
Atlanta, GA 30308

LIGHTING EQUIPMENT LIST

MOVING LIGHTS

MARTIN MAC VIPER PERFORMANCE	30
MARTIN MAC VIPER PROFILE	18
MARTIN MAC WASH DX	16
CLAY PAKY SHARPY	04

LEDS

CHROMA-Q COLORFORCE II 72" DISCUSS LENS OPTIONS	33
CLAY PAKY STORMY CC STROBE	06
ETC LUSTR SERIES 2 @ 36°	16
ETC LUSTR SERIES 2 @ 50°	02
ETC LUSTR SERIES 2 @ 70°	02
ETC LUSTR SERIES 2 @ 90°	02

CONVENTIONAL

ETC S4 LENS TUBE ONLY 14° + COLOR FRAMES	16
---	----

ACCESSORIES

PATTERN HOLDER FOR SRC 4 A-SIZE	12
---------------------------------	----

RIGGING

TYLER TRUSS GT 10' BLACK	27
<i>TRUSS PROTECTORS AS NEEDED</i>	
<i>CONNECTOR PINS AND ACCESSORIES</i>	
<i>RUBBER Mallet</i>	
½ TON CHAIN HOIST 80'	19
<i>CHAIN BAG</i>	
MOTOR POINT KIT	19
<i>6' SPANSET x 2 (ea)</i>	
<i>3' SPANSET x 2 (ea)</i>	
<i>5' STEEL x 3 (ea)</i>	
<i>10' STEEL x 2 (ea)</i>	
<i>BURLAP x 2 (ea)</i>	
<i>5/8" SHACKLE x 4 (ea)</i>	
SPANSET SPARE @ 6'	06
PIPE SCH40 BLACK @ 10' (THREADED)	04
PIPE SCH40 BLACK @ 15'	02
PIPE SCH40 BLACK @ 6' (THREADED)	02
PIPE SCH40 BLACK @ 3'	14
BOOM BASE FOR PIPE	06
SANDBAG	32
CHEESBOROUGH FIXED 90°	34
SIDEARM 18" SINGLE TEE	20

MOTOR CONTROL

MOTOR CONTROLLER	TBD
<i>DISCUSS AVAILABLE INVENTORY</i>	
MOTOR CONTROL CABLE @ 50'	06
MOTOR CONTROL CABLE @ 100'	19

CABLES (THIS VERSION ESTIMATED FOR PRICING ONLY. FINAL LIST TO FOLLOW)

5-PIN DMX @ 5'	20	
5-PIN DMX @ 10'	30	
5-PIN DMX @ 25'	40	
5-PIN DMX @ 50'	20	
5-PIN DMX @ 100'	20	
5-PIN DMX TERMINATOR	10	
ETHERNET PATCH @ 12'	20	
ETHERNET PATCH @ 6'	10	
ETHERCON @ 100'	06	
ETHERCON COUPLER	03	
SOCAPEX 6-CKT @ 25'	06	
SOCAPEX 6-CKT @ 50'	02	
SOCAPEX 6-CKT @ 100'	10	
SOCAPEX BREAK OUT L6-20	10	(LONG TAILS PREFERRED)
SOCAPEX BREAK IN L6-20	10	(NOT NEEDED IF PD HAS SOCA OUT)
L6-20 TWIST JUMPER @ 10'	25	
L6-20 TWIST JUMPER @ 25'	15	
L6-20 TWOFER	20	
L6-20 > POWERCON TAIL	07	FOR LUSTR
L6-20 > TRUE1 TAIL	12	FOR COLORFORCE & STORMY
POWERCON BLUE/GREY @ 5'	12	
POWERCON BLUE/GREY @ 10'	04	
POWERCON BLUE/GREY @ 50'	01	
TRUE1 JUMPER @ 10'	28	
TRUE1 JUMPER @ 25'	06	
CAMLOCK FEEDER SET @ 25'	02	
CAMLOCK TURNAROUND SET	02	
CAMLOCK TEE SET	01	
EDISON @ 10'	06	
EDISON @ 50'	06	
EDISON TRI/CUBE TAP	06	
EDISON POWER STRIP	04	
POWER DISTRIBUTION PANEL	01	
DISCUSS INVENTORY		
AT LEAST 24-WAY 120/208V 3PH		

CONTROL SYSTEM

ETC EOS TI CONSOLE 24K (MAIN)	01
EXTERNAL MONITOR 23"	03
UPS BATTERY	01
MOUSE & KEYBOARD	01
ETC ION XE 12k (BACKUP)	01
EXTERNAL MONITOR	01
UPS BATTERY	01
MOUSE & KEYBOARD	01
CAN SUB EOS RPU	
ETC SHOW CONTROL GATEWAY	02
1 MAIN 1 BACKUP	
CAN SUB SMPTE RESPONSE	
ETC 4-PORT DMX GATEWAY	03
2 ACTIVE 1 SPARE	
OPTOSPLITTER	01
NETWORK SWITCH UNMANAGED	02
24 PORT POE REQUIRED	
NETWORK SWITCH UNMANAGED	02
8-12 PORT POE OPTIONAL	
WIRELESS ACCESS POINT	01
CISCO PREFERRED	
POE POWERED	

EXPENDABLE ITEMS

BLACK GAFFER'S TAPE 2"	TBD
WHITE GAFFER'S TAPE 2"	TBD
JLAR CLEAR TAPE 2"	TBD
SPOOL BLACK TRICK LINE	TBD
ROSCOLUX R02 SHEET	03
ROSCOLUX R132 SHEET	04
LEE COLOR L071 SHEET	03
LEE COLOR L026 HT SHEET	03
GOBO GAM579 A-SIZE	12

LABOR (SHOP PREP ONLY)

2 DAYS 8hr/day

CREW LEAD	16 HOURS
ELECTRICIAN 1	16 HOURS
ELECTRICIAN 2	16 HOURS
ELECTRICIAN 3	16 HOURS

- - END OF PACKET - -