

KEY TO INSTRUMENTATION

- Martin Mac Viper Performance 28
- Martin Mac Viper Profile 18
- Martin Mac Viper Wash DX 14
- Martin Axiom Hybrid 14
-
-
-
- ETC S4-70 Lustr 2
- ETC S4-90 Lustr 2
- ETC S4-PAR (VNSP) 18
- Clay Paky Stormy Strobe CC 6
- Chroma Q Color Force 72 33

GENERAL NOTES

- EXACT SPACING OF OVERHEAD FIXTURES DETERMINED AT SHOP
- DRESS ALL CABLE FOR NEATNESS AND CAMERA
- BLACK OUT ALL SILVER HARDWARE
- HAVE FUN

LEGEND

UNIT # (circle with number)
 FOCUS COLOR (circle with color)
 LENS (circle with lens type)
 TEMPLATE (circle with number)
 CHANNEL # (circle with number)

ANCHOR POINT

MW LIGHTING LD# 10574
 Nashville, Tennessee, USA

REVISION HISTORY

NO.	REVISION	DATE	BY
ADD	DOCUMENT PREP	30 MAR 21	MW
ADD	SCENE LAYOUT / FOCUS PREP	30 MAR 21	MW
ADD	POSITIONS AND MOTORS	31 MAR 21	MW
ADD	REVISOR'S / TROUBLESHOOTING	1 APR 21	MW
B01	SHOP PREP PRELIM REVIEW	2 APR 21	MW
B02	SHOP PREP	3 APR 21	MW
-COR-	LOAD IN	6 APR 21	MW

ROGERS THE MUSICAL

PRODUCTION STAFF

DIRECTOR RHYSS THOMAS
 CHOREOGRAPHER JOSHUA BERGASSE
 PRODUCTION DESIGNER MAYA SHIMOGUCHI
 LIGHTING DESIGNER MIKE WOOD
 ASSOCIATE LD DALTON HAMILTON
 GAFFER DAN CORNWALL
 PROD. MANAGER NADIA PAINÉ

- THE FOX THEATRE -
 ATLANTA, GA - APRIL 2021

SCALE 1/4" = 1'
 UNLESS OTHERWISE NOTED

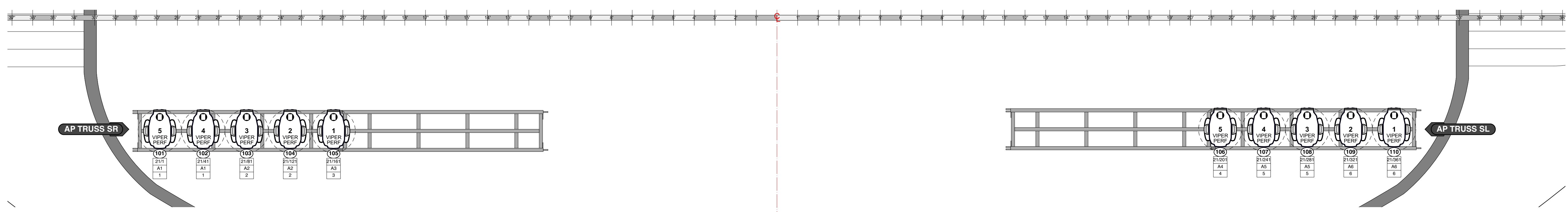
PG SIZE ARCH D

DWG NUMBER **1** OF 23

LIGHTING PLOT OVERSTAGE ELECS

A B C D E F G H I J

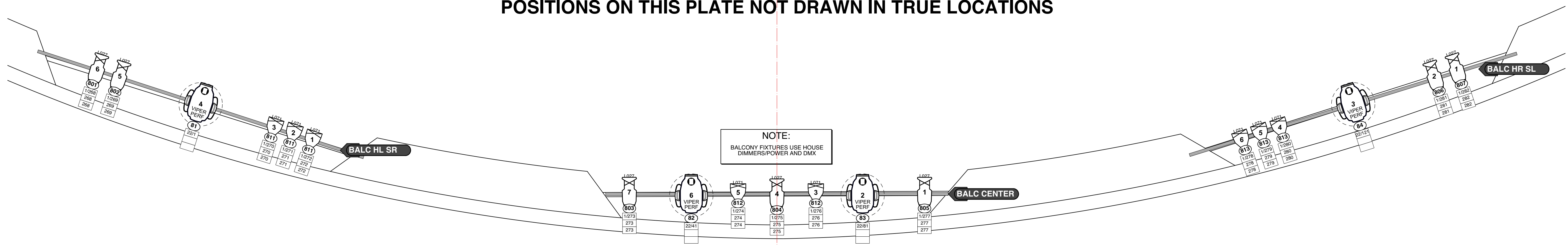
0



1

2

POSITIONS ON THIS PLATE NOT DRAWN IN TRUE LOCATIONS



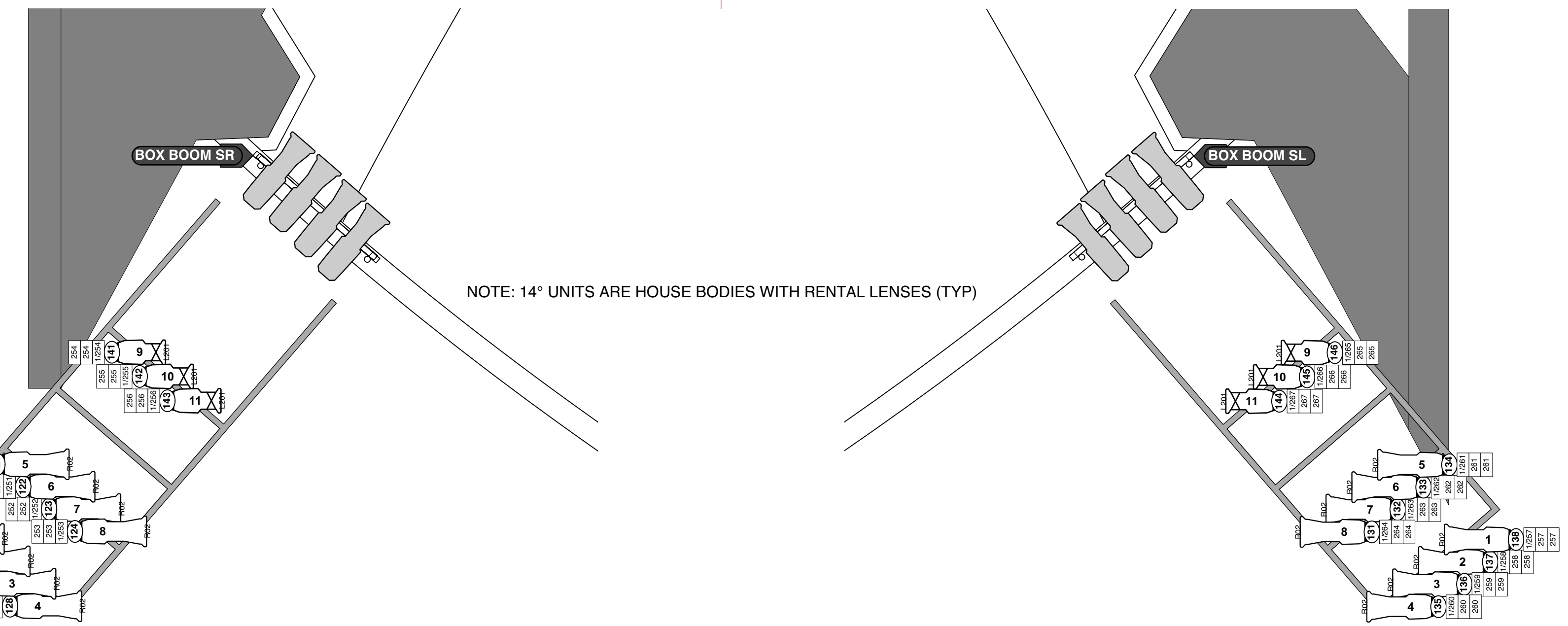
NOTE:
BALCONY FIXTURES USE HOUSE DIMMERS-POWER AND DMX

3

4



5



NOTE: 14° UNITS ARE HOUSE BODIES WITH RENTAL LENSES (TYP)

6

7

A B C D E F G H I J

KEY TO INSTRUMENTATION

- Martin Mac Viper Performance 28
- Martin Mac Viper Profile 18
- Martin Mac Viper Wash DX 14
- Martin Axiom Hybrid 14
- ETC Source-4 14" NOTE: HOUSE INVENTORY WITH RENTAL LENSES 16
- ETC Source-4 19" NOTE: HOUSE INVENTORY 13
- ETC S4-36" LED Lustr 15
- ETC S4-70 LED Lustr 2
- ETC S4-90 LED Lustr 2
- ETC S4-PAR (VNSP) NOTE: HOUSE INVENTORY 18
- Clay Paky Stormy Strobe CC 6
- Chroma Q Color Force 72 33

GENERAL NOTES

- EXACT SPACING OF OVERHEAD FIXTURES DETERMINED AT SHOP
- PRESS ALL CABLE FOR NEATNESS AND CAMERA
- BLACK OUT ALL SILVER HARDWARE
- HANG FAN

LEGEND

FOCUS COLOR: FOC CLR

LENS: LENS

TEMPLATE: TEMPLATE

UNIT #: UNIT #

ANGLE: ANGLE

GRN: GRN

DMX: DMX

CHANNEL #: CHANNEL #

ANCHOR POINT

MW LIGHTING LD# 10574

REVISION HISTORY

NO.	REVISION	DATE	BY
ADD	DOCUMENT PREP	30 MAR 21	MW
ADD	SCENE LAYOUT FLOOR PREP	30 MAR 21	MW
ADD	POSITIONS AND MOTORS	31 MAR 21	MW
ADD	REVISIONS TO MOTOR AND POSITIONS	1 APR 21	MW
ADD	SHOP PREP PRELIM REVIEW	7 APR 21	MW
ADD	SHOP PREP	12 APR 21	MW
>COR<	LOAD IN	6 APR 21	MW

ROGERS THE MUSICAL

PRODUCTION STAFF

DIRECTOR: RHYSS THOMAS

CHOREOGRAPHER: JOSHUA BERGASSE

PRODUCTION DESIGNER: MAYA SHIMOGLUCHI

LIGHTING DESIGNER: MIKE WOOD

ASSOCIATE LD: DALTON HAMILTON

GAPPER: DAN CORNWALL

PROD. MANAGER: NADIA PAINÉ

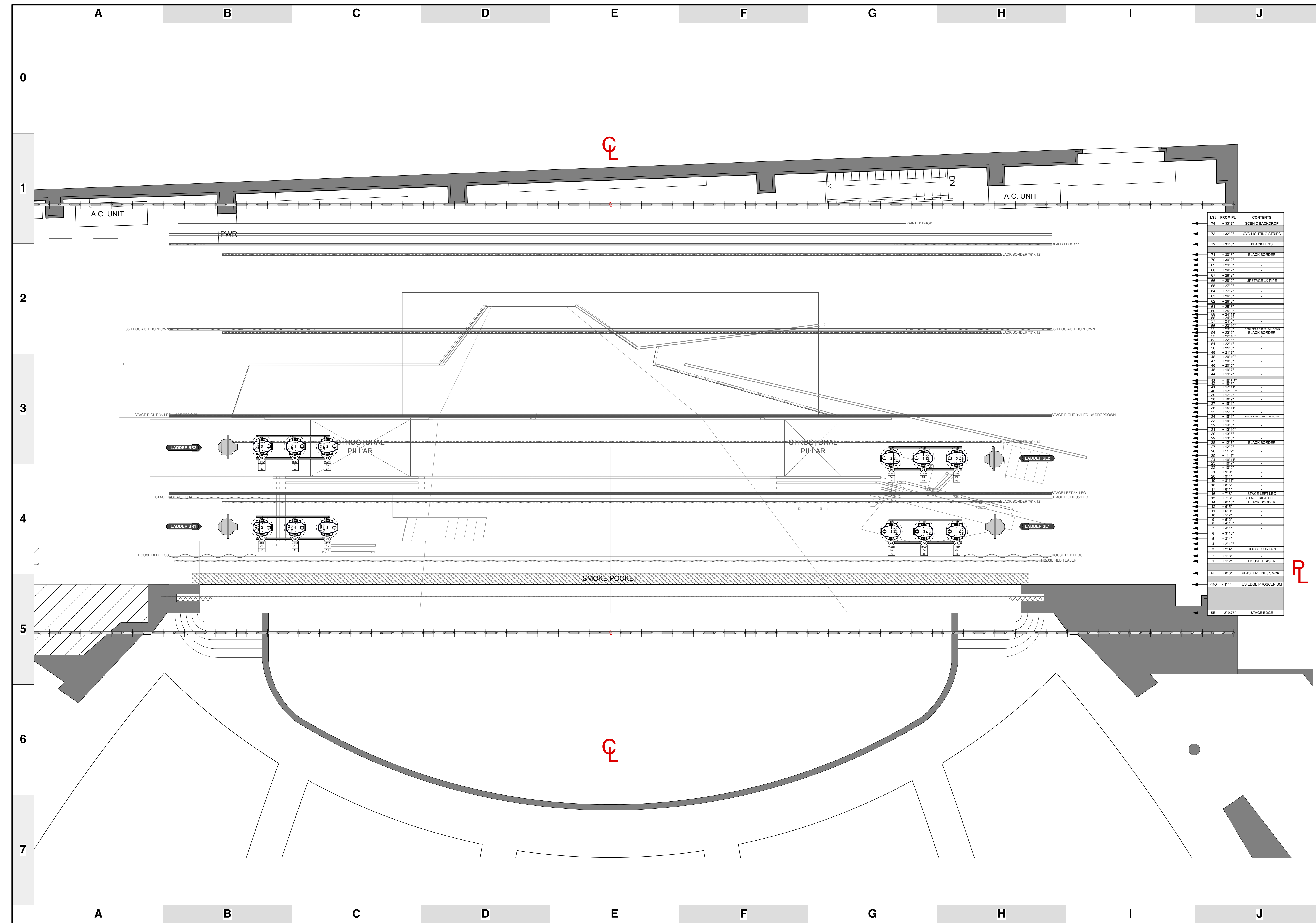
- THE FOX THEATRE -
ATLANTA, GA - APRIL 2021

SCALE 3/8" = 1'
UNLESS OTHERWISE NOTED

PG SIZE ARCH D

DWG NUMBER **2**
OF 23

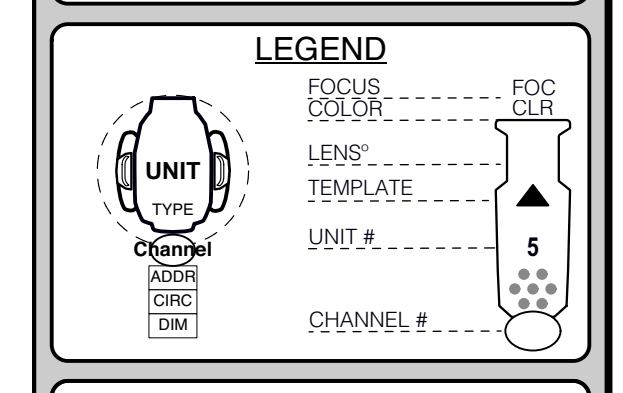
LIGHTING PLOT
FOH POSITIONS



KEY TO INSTRUMENTATION

	Martin Mac Viper Performance	28
	Martin Mac Viper Profile	18
	Martin Mac Viper Wash DX	14
	Martin Axiom Hybrid	14
	ETC Source-4 14\"/>	16
	ETC Source-4 19\"/>	13
	ETC S4-36\"/>	15
	ETC S4-70 LED Lustr	2
	ETC S4-90 LED Lustr	2
	ETC S4-PAR (VNSP) NOTE: HOUSE INVENTORY	18
	Clay Paky Stormy Strobe CC	6
	Chroma Q Color Force 72	33

GENERAL NOTES
 - EXACT SPACING OF OVERHEAD FIXTURES DETERMINED AT SHOP
 - PRESS ALL CABLE FOR NEATNESS AND CAMERA
 - BLACK OUT ALL SILVER HARDWARE
 - HAVE FUN



MW LIGHTING
 Nashville, Tennessee, USA
 LD# 10574
 www.mwlighting.com
 www.anchorpoint.com

REVISION HISTORY

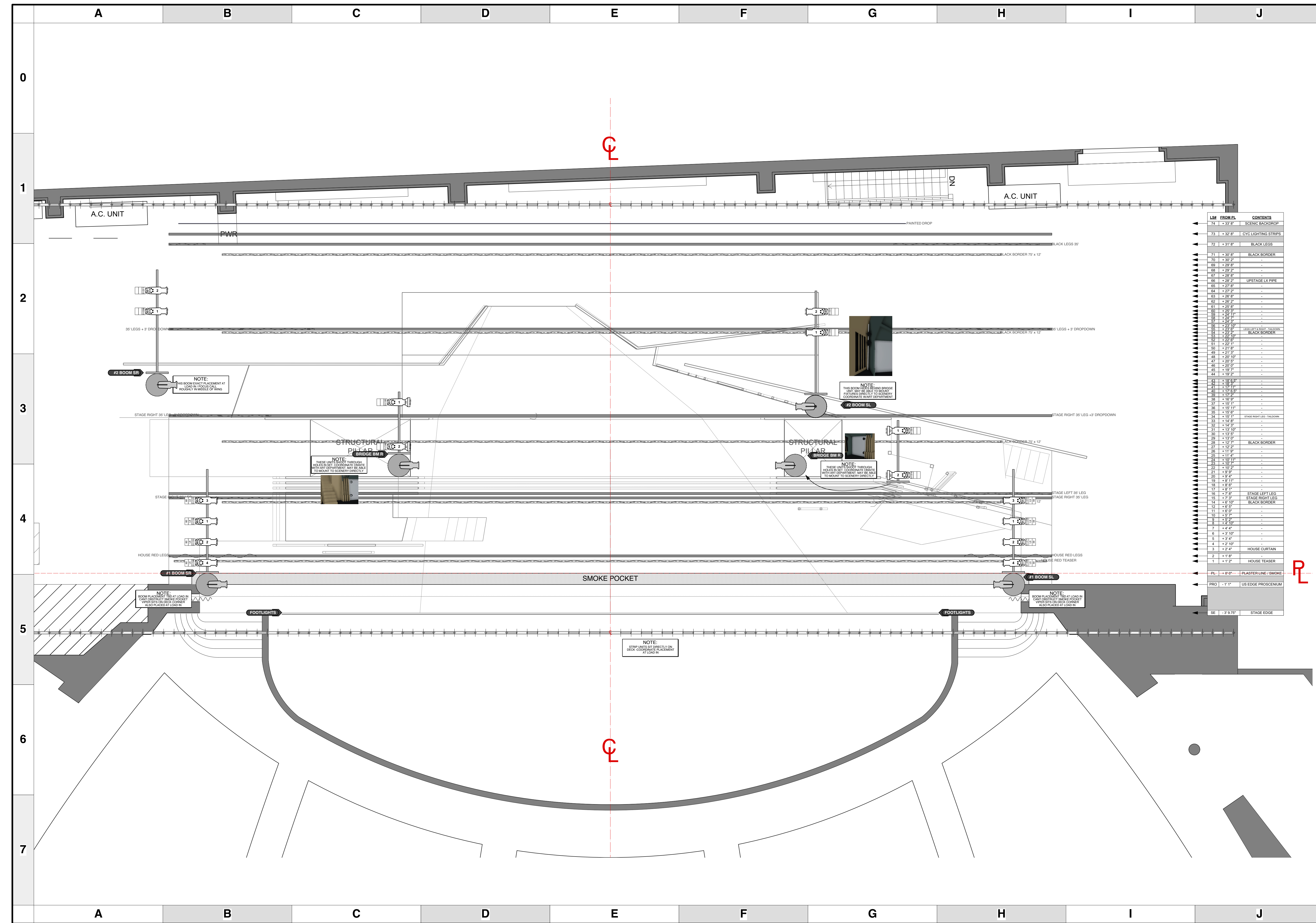
NO.	REVISION	DATE	BY
ADD	DOCUMENT PREP	30 MAR 21	MW
ADD	SCENE LAYOUT / FOCUS PREP	30 MAR 21	MW
ADD	POSITIONS AND MOTORS	31 MAR 21	MW
ADD	PROCESOR'S / FOCUS CHECK AND FOCUS	1 APR 21	MW
BET	SHOP PREP PRELIM REVIEW	2 APR 21	MW
BET	SHOP PREP	3 APR 21	MW
>COR<	LOAD IN	6 APR 21	MW

ROGERS THE MUSICAL

PRODUCTION STAFF
 DIRECTOR RHYSS THOMAS
 CHOREOGRAPHER JOSHUA BERGASSE
 PRODUCTION DESIGNER MAYA SHIMOGUCHI
 LIGHTING DESIGNER MIKE WOOD
 ASSOCIATE LD DALTON HAMILTON
 GAFFER DAN CORNWALL
 PROD. MANAGER NADIA PAINÉ
 - THE FOX THEATRE -
 ATLANTA, GA - APRIL 2021

SCALE 1/4" = 1'
 UNLESS OTHERWISE NOTED
 PG SIZE ARCH D
 DWG NUMBER
3
 OF 23

LIGHTING PLOT LADDER POSITIONS



KEY TO INSTRUMENTATION

- Martin Mac Viper Performance 28
- Martin Mac Viper Profile 18
- Martin Mac Viper Wash DX 14
- Martin Axiom Hybrid 14
-
-
-
- ETC S4-70 Lustr 2
- ETC S4-90 Lustr 2
- ETC S4-PAR (VNSP) 18
- Clay Paky Stormy Strobe CC 6
- Chroma Q Color Force 72 33

GENERAL NOTES

- EXACT SPACING OF OVER-HEAD FIXTURES DETERMINED AT SHOP
- DRESS ALL CABLE FOR NEATNESS AND CAMERA
- BLACK OUT ALL SILVER HARDWARE
- HANG FIRE

LEGEND

UNIT TYPE: UNIT #

FOCUS COLOR: FOC CLR

LENS: LENS

TEMPLATE: TEMPLATE

ANCHOR POINT:

MW LIGHTING: LD# 10574

REVISION HISTORY

NO.	REVISION	DATE	BY
ADD	DOCUMENT PREP	30 MAR 21	MW
ADD	SCENE LAYOUT / FOCUS PREP	30 MAR 21	MW
ADD	POSITIONS AND MOTORS	31 MAR 21	MW
ADD	PRODUCTION / FOCUS / POSITIONING	1 APR 21	MW
B1	SHOP PREP PRELIM REVIEW	2 APR 21	MW
B2	SHOP PREP	3 APR 21	MW
CONC	LOAD IN	6 APR 21	MW

ROGERS THE MUSICAL

PRODUCTION STAFF

DIRECTOR: RHYSS THOMAS
 CHOREOGRAPHER: JOSHUA BERGASSE
 PRODUCTION DESIGNER: MAYA SHIMOGLUCHI
 LIGHTING DESIGNER: MIKE WOOD
 ASSOCIATE LD: DALTON HAMILTON
 GAFFER: DAN CORNWALL
 PROD. MANAGER: NADIA PAINÉ

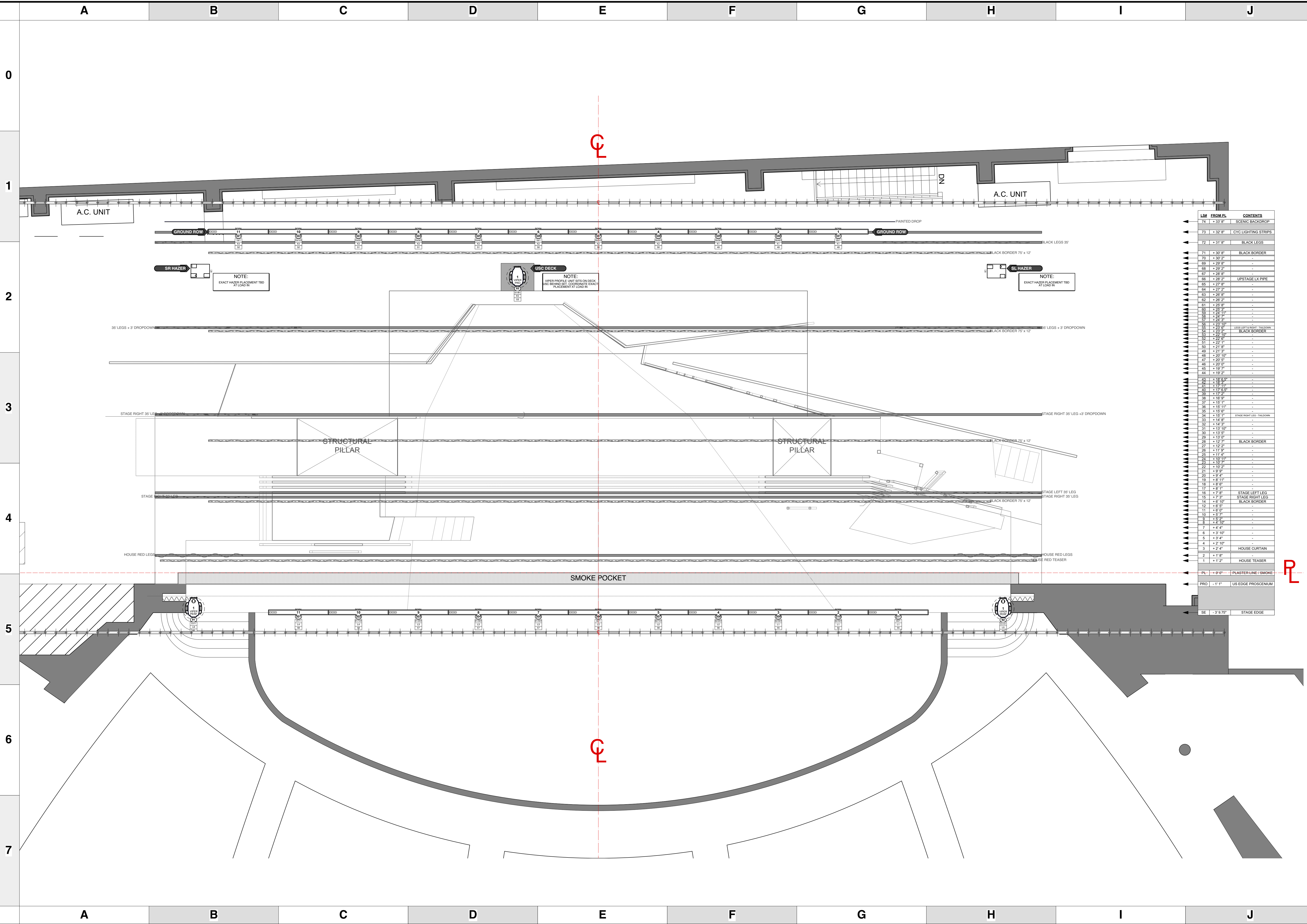
- THE FOX THEATRE -
 ATLANTA, GA - APRIL 2021

SCALE: 1/4" = 1'
 UNLESS OTHERWISE NOTED

PG SIZE: ARCH D

DWG NUMBER: **4** OF 23

LIGHTING PLOT BOOM POSITIONS



KEY TO INSTRUMENTATION

- Martin Mac Viper Performance 28
- Martin Mac Viper Profile 18
- Martin Mac Viper Wash DX 14
- Martin Axiom Hybrid 14
- ETC Source-4 14" NOTE: HOUSE INVENTORY WITH RENTAL LENSES 16
- ETC Source-4 19" NOTE: HOUSE INVENTORY 13
- ETC S4-36" LED Lustr 15
- ETC S4-70 LED Lustr 2
- ETC S4-90 LED Lustr 2
- ETC S4-PAR (VNSP) NOTE: HOUSE INVENTORY 18
- Clay Paky Stormy Strobe CC 6
- Chroma Q Color Force 72 33

GENERAL NOTES

- EXACT SPACING OF OVER-HEAD FIXTURES DETERMINED AT SHOP
- DRESS ALL CABLE FOR NEATNESS AND CAMERA
- BLACK OUT ALL SILVER HARDWARE
- HAVE FUN

LEGEND

UNIT #, FOCUS COLOR, LENS, TEMPLATE, UNIT #, CHANNEL #

ANCHOR POINT

MW LIGHTING Nashville, Tennessee, USA LD# 10574

REVISION HISTORY

NO.	REVISION	DATE	BY
ADD	DOCUMENT PREP	30 MAR 21	MW
ADD	SCENE LAYOUT / FOCUS PREP	30 MAR 21	MW
ADD	POSITIONS AND MOTORS	31 MAR 21	MW
ADD	PROCESSED / FOCUS PREP	1 APR 21	MW
ADD	SHOP PREP PRELIM REVIEW	2 APR 21	MW
REV	SHOP PREP	3 APR 21	MW
ADD	LOAD IN	6 APR 21	MW

ROGERS THE MUSICAL

PRODUCTION STAFF

DIRECTOR: RHYSS THOMAS
 CHOREOGRAPHER: JOSHUA BERGASSE
 PRODUCTION DESIGNER: MAYA SHIMOGUCHI
 LIGHTING DESIGNER: MIKE WOOD
 ASSOCIATE LD: DALTON HAMILTON
 GAFFER: DAN CORNWALL
 PROD. MANAGER: NADIA PAINÉ

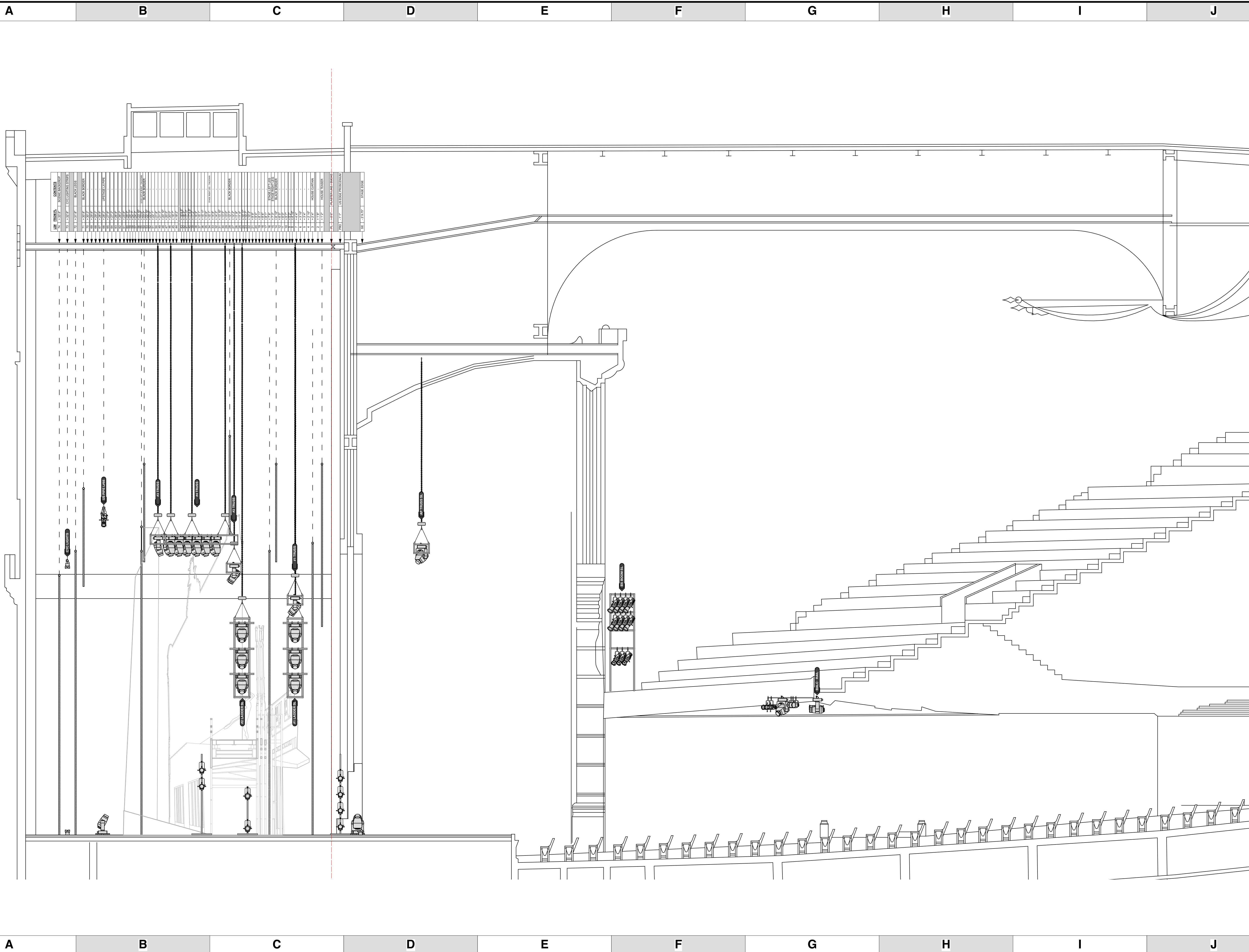
- THE FOX THEATRE -
 ATLANTA, GA - APRIL 2021

SCALE 1/4" = 1'
 UNLESS OTHERWISE NOTED

PG SIZE ARCH D

DWG NUMBER **5** OF 23

LIGHTING PLOT DECK POSITIONS



KEY TO INSTRUMENTATION

- Martin Mac Viper Performance 28
- Martin Mac Viper Profile 18
- Martin Mac Viper Wash DX 14
- Martin Axiom Hybrid 14
-
-
-
- ETC S4-70 LED Lustr 2
- ETC S4-90 LED Lustr 2
- ETC S4-PAR (VNSP) 18
- Clay Paky Stormy Strobe CC 6
- Chroma Q Color Force 72 33

GENERAL NOTES

- EXACT SPACING OF OVERHEAD FIXTURES DETERMINED AT SHOP
- PRESS ALL CABLES FOR TIGHTNESS AND CAMERA
- BLACK OUT ALL SILVER HARDWARE
- HANGERS FOR

LEGEND

FOCUS COLOR: FOC CLR
 LENS: LENS
 TEMPLATE: TEMPLATE
 UNIT #: UNIT #
 ANGLE: ANGLE
 GRC: GRC
 DM: DM
 CHANNEL #: CHANNEL #

ANCHOR POINT

MW LIGHTING
 Nashville, Tennessee, USA
 LD# 10574

REVISION HISTORY

NO.	REVISION	DATE	BY
ADD	DOCUMENT PREP	30 MAR 21	MW
ADD	SCENE LAYOUT FLOOR PREP	30 MAR 21	MW
ADD	POSITIONS AND MOTORS	31 MAR 21	MW
ADD	PRODUCTION DESIGNER'S REVIEW	1 APR 21	MW
BS1	SHOP PREP PRELIM REVIEW	2 APR 21	MW
BS1	SHOP PREP	3 APR 21	MW
>COR<	LOAD IN	6 APR 21	MW

ROGERS THE MUSICAL

PRODUCTION STAFF

DIRECTOR RHY'S THOMAS
 CHOREOGRAPHER JOSHUA BERGASSE
 PRODUCTION DESIGNER MAYA SHIMOGLUCHI
 LIGHTING DESIGNER MIKE WOOD
 ASSOCIATE LD DALTON HAMILTON
 GAFFER DAN CORNWALL
 PROD. MANAGER NADIA PAINÉ

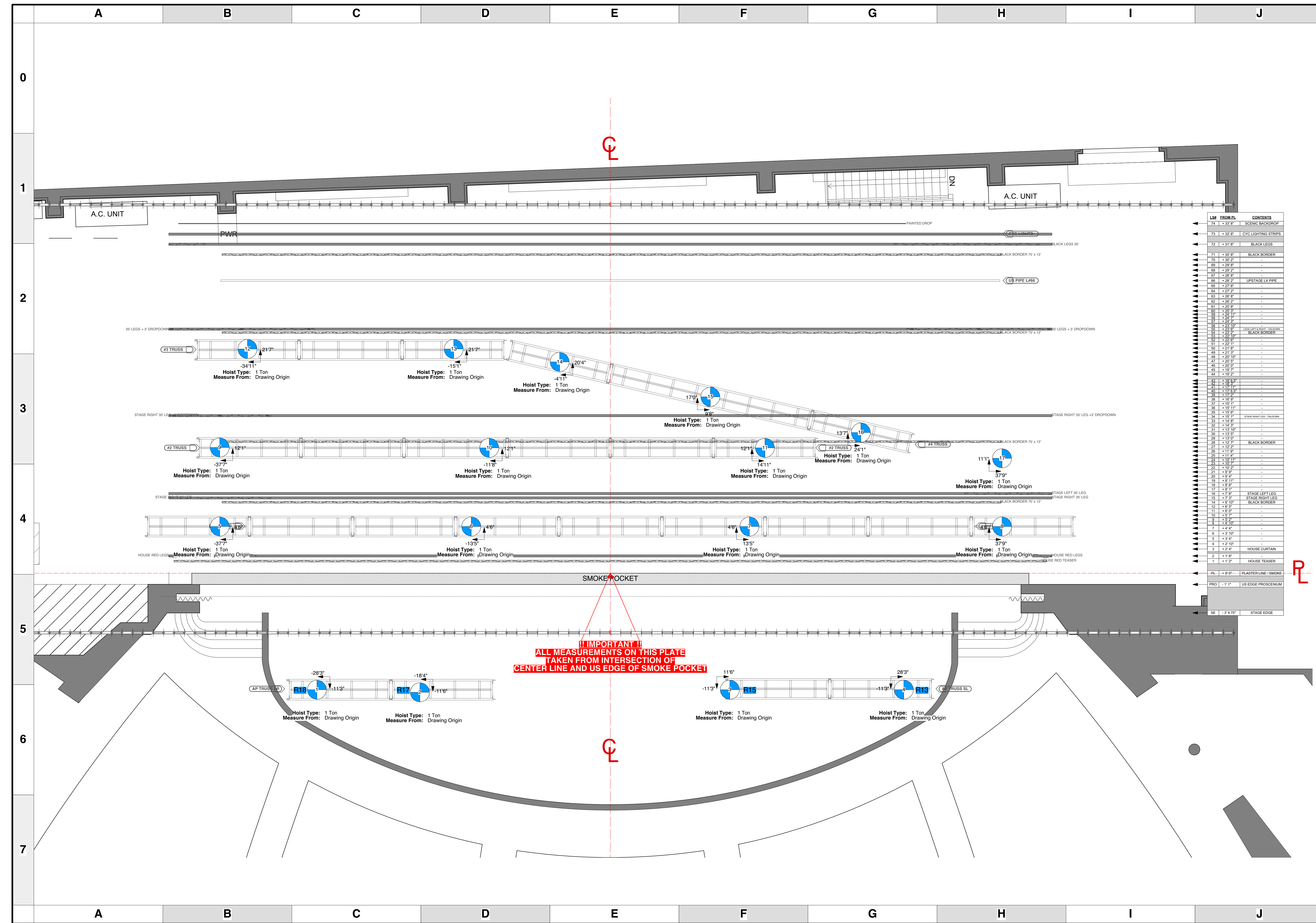
- THE FOX THEATRE -
 ATLANTA, GA - APRIL 2021

SCALE 1/4" = 1'
UNLESS OTHERWISE NOTED

PG SIZE ARCH D

DWG NUMBER
6
OF 23

LIGHTING PLOT SECTION @ CL



KEY TO INSTRUMENTATION

- Martin Mac Viper Performance 28
- Martin Mac Viper Profile 18
- Martin Mac Viper Wash DX 14
- Martin Axiom Hybrid 14
- ETC Source-4 14\"/> NOTE: HOUSE INVENTORY WITH RENTAL LENSES 16
- ETC Source-4 19\"/> NOTE: HOUSE INVENTORY 13
- ETC S4-36\"/> LED Lustr 15
- ETC S4-70 LED Lustr 2
- ETC S4-90 LED Lustr 2
- ETC S4-PAR (VNSP) NOTE: HOUSE INVENTORY 18
- Clay Paky Stormy Strobe CC 6
- Chroma Q Color Force 72 33

GENERAL NOTES

- EXACT SPACING OF OVER-HEAD FIXTURES DETERMINED AT SHOP
- DRESS ALL CABLE FOR NEATNESS AND CAMERA
- BLACK OUT ALL SILVER HARDWARE
- HANG FAN

LEGEND

- UNIT
- FOCUS COLOR
- LENS
- TEMPLATE
- UNIT #
- CHANNEL #

ANCHOR POINT

MW LIGHTING LD# 10574
Nashville, Tennessee, USA

REVISION HISTORY

NO.	REVISION	DATE	BY
ADD	DOCUMENT PREP	30 MAR 21	MW
ADD	SCENE LAYOUT FLOOR PREP	30 MAR 21	MW
ADD	POSITIONS AND MOTORS	31 MAR 21	MW
ADD	HOISTS/TIMING/STROBE/ETC PREP	1 APR 21	MW
B1	SHOP PREP PRELIM REVIEW	2 APR 21	MW
B2	SHOP PREP	3 APR 21	MW
>COR<	LOAD IN	6 APR 21	MW

ROGERS THE MUSICAL

PRODUCTION STAFF

- DIRECTOR RHYSS THOMAS
- CHOREOGRAPHER JOSHUA BERGASSE
- PRODUCTION DESIGNER MAYA SHIMOGLUCHI
- LIGHTING DESIGNER MIKE WOOD
- ASSOCIATE LD DALTON HAMILTON
- GAPPER DAN CORNWALL
- PROD. MANAGER NADIA PAINÉ

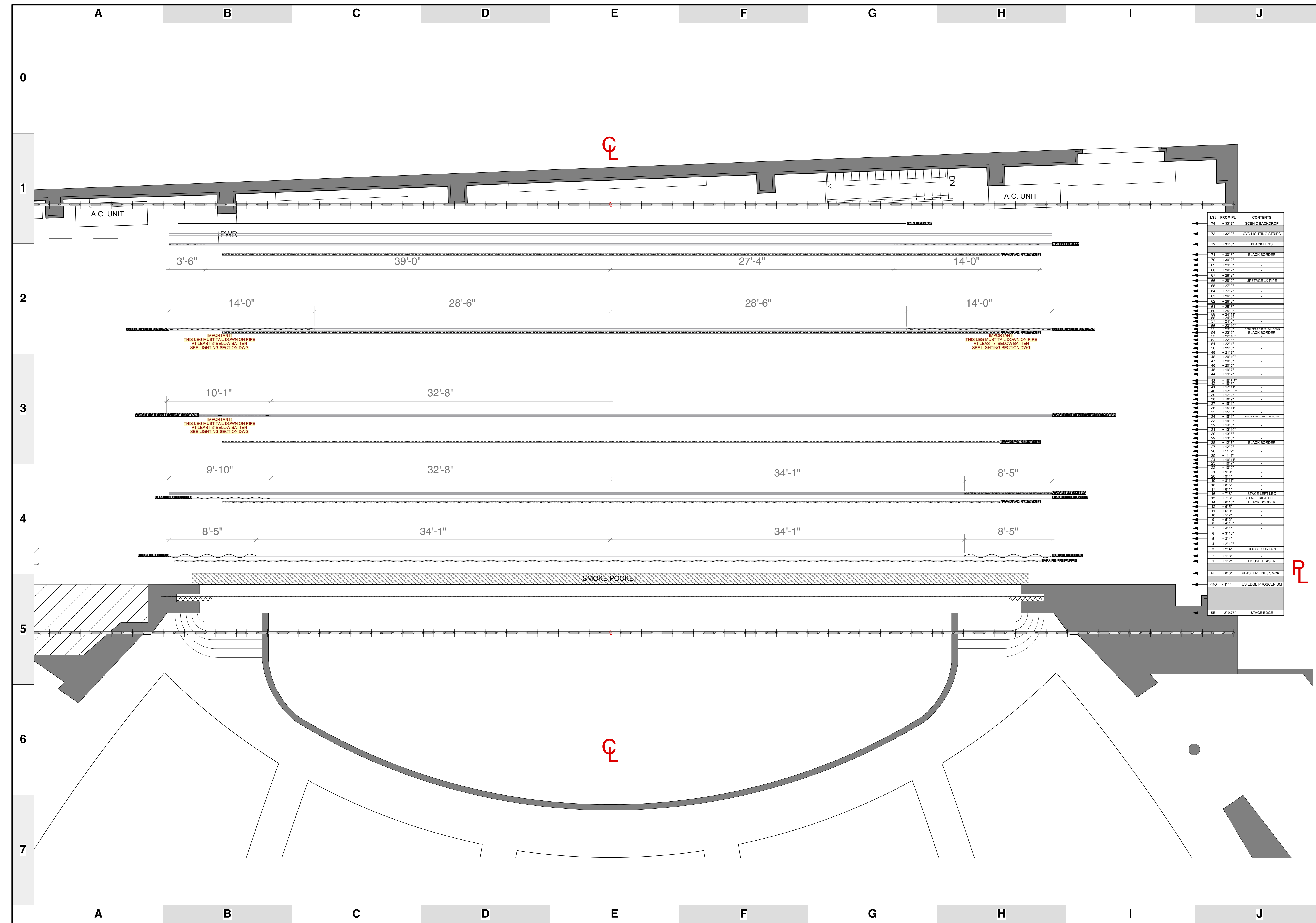
- THE FOX THEATRE -
ATLANTA, GA - APRIL 2021

SCALE 1/4" = 1'
UNLESS OTHERWISE NOTED

PG SIZE ARCH D

DWG NUMBER **7**
OF 23

LIGHTING PLOT
MOTOR PLAN



KEY TO INSTRUMENTATION

- Martin Mac Viper Performance 28
- Martin Mac Viper Profile 18
- Martin Mac Viper Wash DX 14
- Martin Axiom Hybrid 14
-
-
-
- ETC S4-70 LED Lustr 2
- ETC S4-90 LED Lustr 2
- ETC S4-PAR (VNSP) 18
- Clay Paky Stormy Strobe CC 6
- Chroma Q Color Force 72 33

GENERAL NOTES

- EXACT SPACING OF OVERHEAD FIXTURES DETERMINED AT SHOP
- PRESS ALL CABLE FOR NEATNESS AND CAMERA
- BLACK OUT ALL SILVER HARDWARE
- HANG FOR

LEGEND

ANCHOR POINT

MW LIGHTING LD# 10574
 Nashville, Tennessee, USA

REVISION HISTORY

NO.	REVISION	DATE	BY
ADD	DOCUMENT PREP	30 MAR 21	MW
ADD	SCENE LAYOUT / FOCUS PREP	30 MAR 21	MW
ADD	POSITIONS AND MOTORS	31 MAR 21	MW
ADD	REVISIONS TO MOTOR AND POSITION	1 APR 21	MW
B01	SHOP PREP PRELIM REVIEW	2 APR 21	MW
B02	SHOP PREP PRELIM REVIEW	3 APR 21	MW
>COR<	LOAD IN	6 APR 21	MW

ROGERS THE MUSICAL

PRODUCTION STAFF

DIRECTOR RHYSS THOMAS
 CHOREOGRAPHER JOSHUA BERGASSE
 PRODUCTION DESIGNER MAYA SHIMOGUCHI
 LIGHTING DESIGNER MIKE WOOD
 ASSOCIATE LD DALTON HAMILTON
 GAFFER DAN CORNWALL
 PROD. MANAGER NADIA PAINNE
- THE FOX THEATRE -
 ATLANTA, GA - APRIL 2021

SCALE 1/4" = 1'
 UNLESS OTHERWISE NOTED

PG SIZE ARCH D

DWG NUMBER **S1** OF 23

SOFT GOODS OVERHEAD MASKING