

KEY TO INSTRUMENTATION

- ROBE Robin BMFL Blade 10
- Elation Artistes Picasso 22
- Robe Robin Mega Pointe 24
- Martin MAC Aura 15
- ETC S4-26" LED Lustr 4
- ETC S4-36" LED Lustr 9
- Colorado 2 Solo 54
- Chroma Q Color Force 72 14
- ReelEFX DF-50 2
- Practical 8

GENERAL NOTES

- Please have ample R119, R132, and blackrap available at focus call.

LEGEND

ABBREVIATIONS: R = Rosco, G = GAM, A = Apollo, LS = Line Set, GP = Ground Plan, TO = Tech. Direct, LD = Lighting Design

FOCUS COLOR: FOC CLR

LENS: LENS

TEMPLATE: TEMPLATE

UNIT #: UNIT #

CHANNEL #: CHANNEL #

MAMMA MIA! CITY SPRINGS THEATRE COMPANY

MW LIGHTING LD# 10574

REVISION HISTORY

NO.	REVISION	DATE	BY
ADD	SCENIC LAYOUT / DOC PREP	19 APR 21	MW
ADD	SCENIC UPDATES	19 APR 21	MW
>BD1<	PRELIM SUBMITTAL	20 APR 21	MW

MAMMA MIA! PRODUCTION STAFF

DIRECTOR: BRANDT BLOCKER
 LIGHTING DESIGNER: MIKE WOOD
 ASSOC LD/PROGRAMMER: DALTON HAMILTON
 ASSOC LIGHTING DESIGNER: ABBY MAY

PROD. ELEC. MANAGER: JON SUMMERS
 PROD. MANAGER: JON SUMMERS

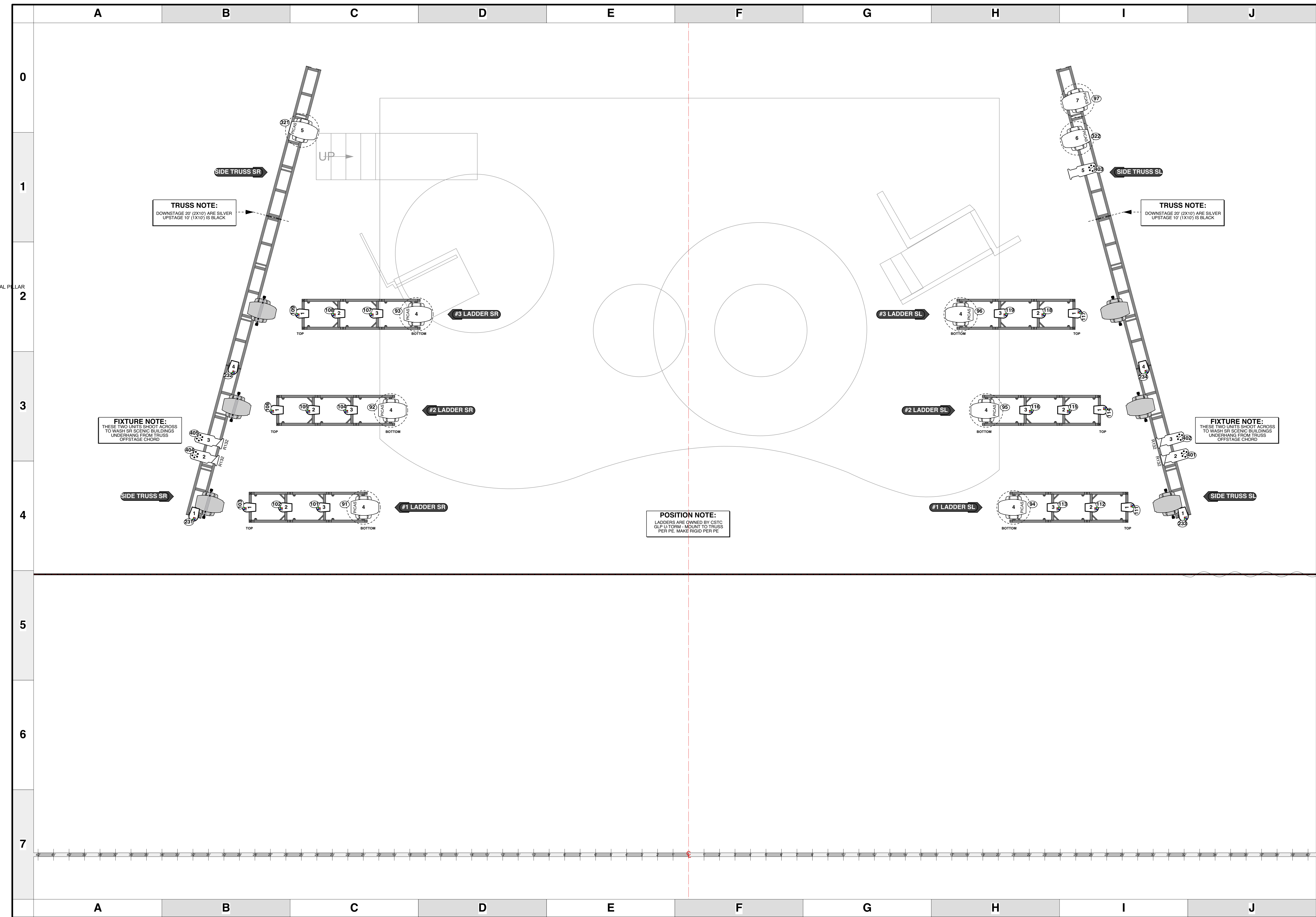
- AMERISBANK AMPHITHEATRE -
 ALPHARETTA, GA - MAY 2021

SCALE 3/8" = 1'
 UNLESS OTHERWISE NOTED

PG SIZE ARCH D

DWG NUMBER **1** OF N/A

LIGHTING PLOT OVERHEAD TRUSSES



KEY TO INSTRUMENTATION

- ROBE Robin BMFL Blade 10
- Elation Artiste Picasso 22
- Robe Robin Mega Pointe 24
- Martin MAC Aura 15
- ETC S4-26" LED Lustr 4
- ETC S4-36" LED Lustr 9
- Colorado 2 Solo 54
- Chroma Q Color Force 72 14
- ReelEFX DF-50 2
- Practical 8

GENERAL NOTES
- Please have ample R119, R132, and blackwrap available at focus call.

LEGEND

ABBREVIATIONS: R = Rosco, G = GAM, A = Apollo, LS = Line Set, GP = Ground Plan, TO = Tech. Direct, LD = Lighting Dsgnr

FOCUS COLOR: FOC CLR

LENS: LENS, TEMPLATE

UNIT #

CHANNEL #

MAMMA MIA! CITY SPRINGS THEATRE COMPANY

MW LIGHTING LD# 10574
Nashville, Tennessee, USA

REVISION HISTORY

NO.	REVISION	DATE	BY
ADD	SCENIC LAYOUT / DOC PREP	09 APR 21	MW
ADD	SCENIC UPDATES	19 APR 21	MW
>B01<	PRELIM SUBMITTAL	20 APR 21	MW

MAMMA MIA! PRODUCTION STAFF

DIRECTOR: BRANDT BLOCKER
 LIGHTING DESIGNER: MIKE WOOD
 ASSOC LD/PROGRAMMER: DALTON HAMILTON
 ASSOC LIGHTING DSGNR: ABBY MAY

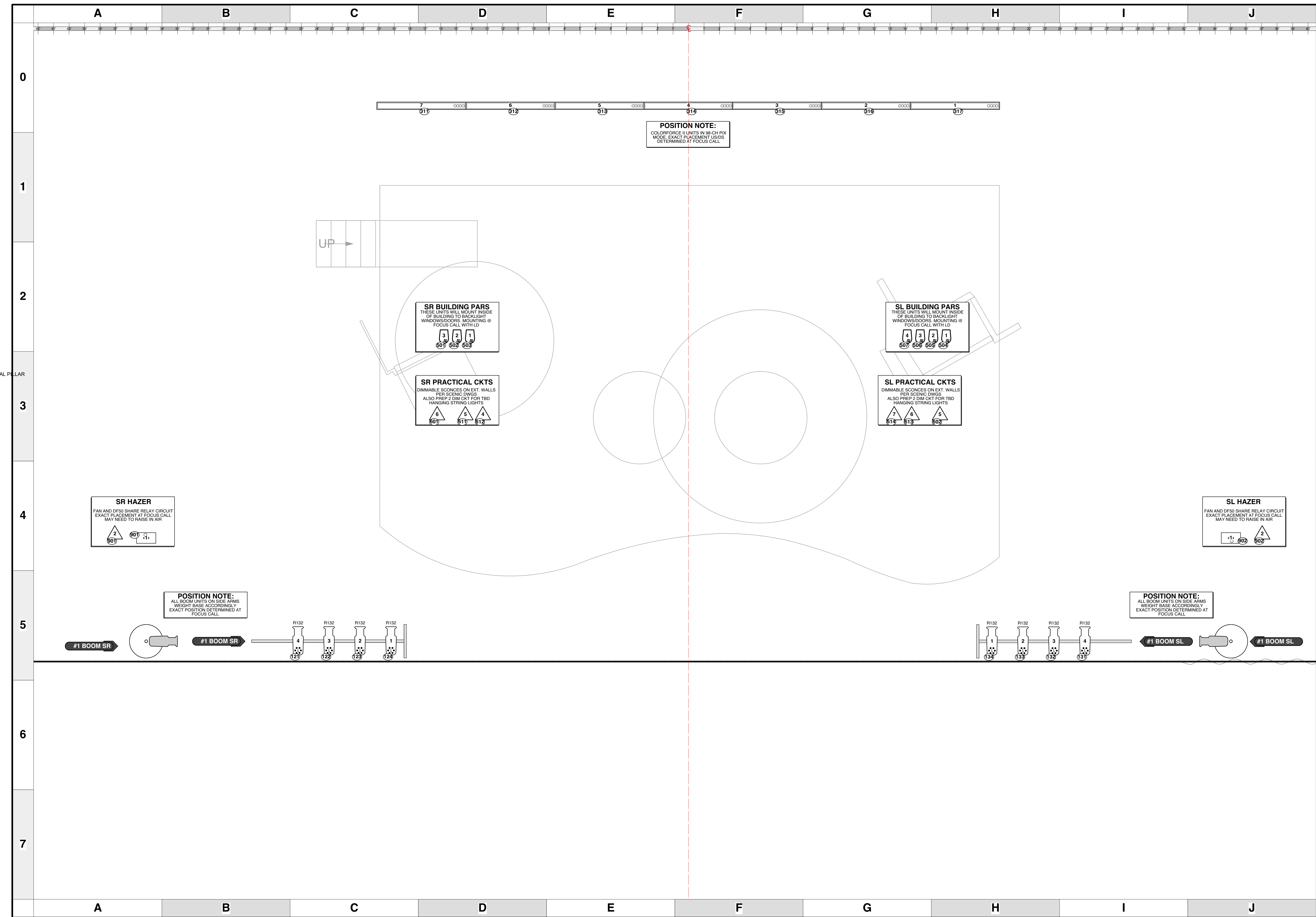
PROD. ELEC: JON SUMMERS
 PROD. MANAGER: JON SUMMERS

- AMERISBANK AMPHITHEATRE -
ALPHARETTA, GA - MAY 2021

SCALE 3/8" = 1'
UNLESS OTHERWISE NOTED

DWG NUMBER **2**
OF 14

LIGHTING PLOT SIDE LADDERS



KEY TO INSTRUMENTATION

- ROBE Robin BMFL Blade 10
- Elation Artiste Picasso 22
- Robe Robin Mega Pointe 24
- Martin MAC Aura 15
- ETC S4-26" LED Lustr 4
- ETC S4-36" LED Lustr 9
- Colorado 2 Solo 54
- Chroma Q Color Force 72 14
- ReelEFX DF-50 2
- Practical 8

GENERAL NOTES

Please have ample R119, R132, and blackrap available at focus call.

LEGEND

ABBREVIATIONS: FOCUS COLOR, FOC CLR, R = Rosco, G = GAM, A = Apollo, LS = Line Set, GP = Ground Plan, TD = Tech. Direct, LD = Lighting Design

MAMMA MIA! CITY SPRINGS THEATRE COMPANY

MW LIGHTING LD# 10574

REVISION HISTORY

NO.	REVISION	DATE	BY
ADD	SCENIC LAYOUT / DOC PREP	09 APR 21	MW
ADD	SCENIC UPDATES	19 APR 21	MW
>B01<	PRELIM SUBMITTAL	20 APR 21	MW

MAMMA MIA! PRODUCTION STAFF

DIRECTOR: BRANDT BLOCKER
 LIGHTING DESIGNER: MIKE WOOD
 ASSOC LD/PROGRAMMER: DALTON HAMILTON
 ASSOC LIGHTING DESIGNER: ABBY MAY
 PROD. ELEC.: JON SUMMERS
 PROD. MANAGER: JON SUMMERS

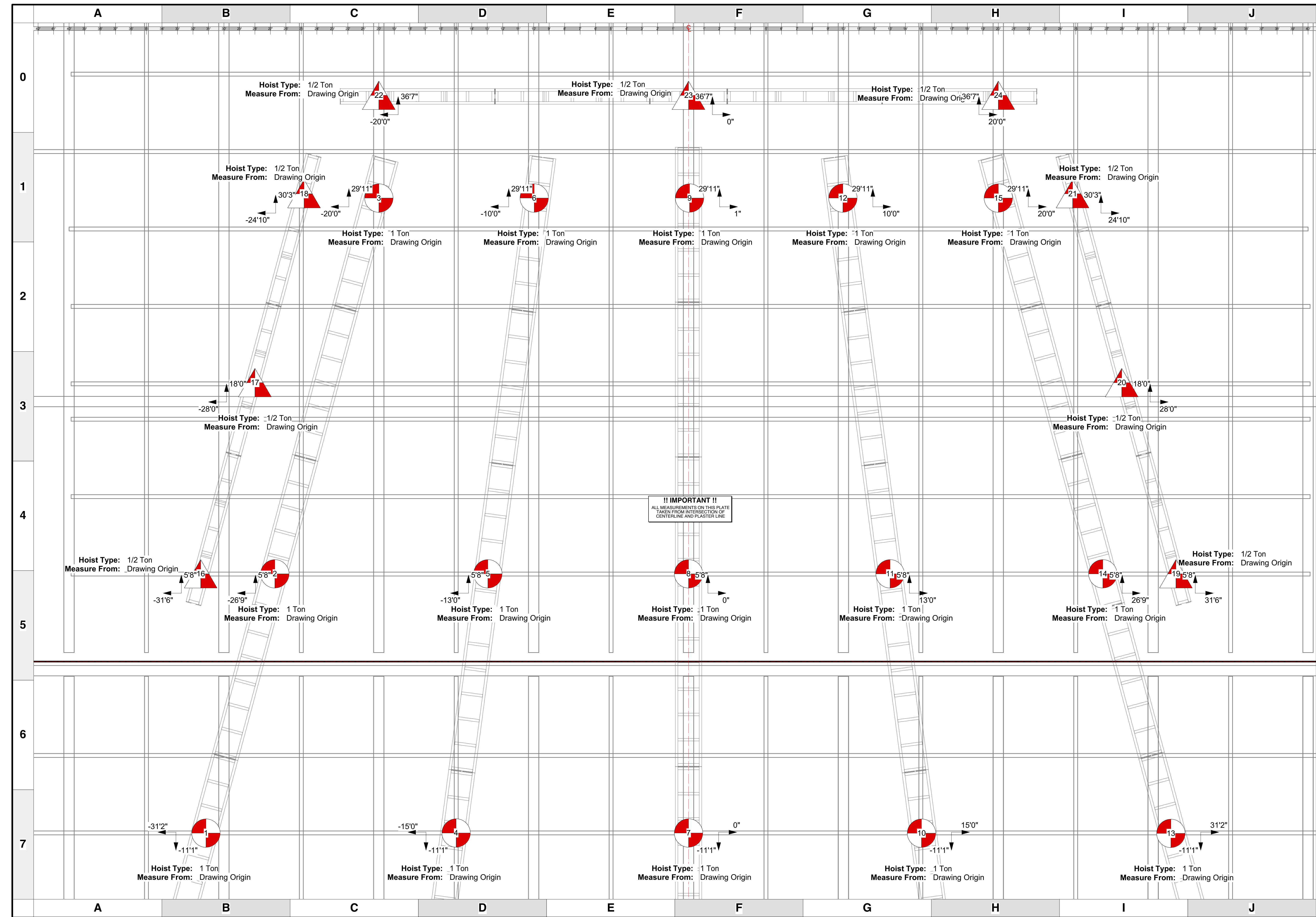
- AMERISBANK AMPHITHEATRE -
ALPHARETTA, GA - MAY 2021

SCALE 3/8" = 1'
 UNLESS OTHERWISE NOTED

PG SIZE ARCH D

DWG NUMBER **3** OF 14

LIGHTING PLOT DECK / BOOMS



KEY TO INSTRUMENTATION

- ROBE Robin BMFL Blade 10
- Elation Artiste Picasso 22
- Robe Robin Mega Pointe 24
- Martin MAC Aura 15
- ETC S4-26" LED Lustr 4
- ETC S4-36" LED Lustr 9
- Colorado 2 Solo 54
- Chroma Q Color Force 72 14
- ReelEFX DF-50 2
- Practical 8

GENERAL NOTES

Please have ample R119, R132, and blackrap available at focus call.

LEGEND

ABBREVIATIONS: R = Rosco, G = GAM, A = Apollo, LS = Line Set, GP = Ground Plan, LX = Electric, TD = Tech. Direct, LD = Lighting Design

FOCUS COLOR: FOC CLR

LENS: LENS

TEMPLATE: TEMPLATE

UNIT: UNIT # 5

CHANNEL: CHANNEL #

MAMMA MIA! CITY SPRINGS THEATRE COMPANY

MW LIGHTING LD# 10574

REVISION HISTORY

NO.	REVISION	DATE	BY
ADD	SCENE LAYOUT / DOC PREP	19 APR 21	MW
ADD	SCENE CHANGES	19 APR 21	MW
>B01<	PRELIM SUBMITTAL	20 APR 21	MW

MAMMA MIA! PRODUCTION STAFF

DIRECTOR: BRANDT BLOCKER
 LIGHTING DESIGNER: MIKE WOOD
 ASSOC LD/PROGRAMMER: DALTON HAMILTON
 ASSOC LIGHTING DESIGNER: ABBY MAY

PROD. ELEC. MANAGER: JON SUMMERS
 PROD. MANAGER: AMERISBANK AMPHITHEATRE - ALPHARETTA, GA - MAY 2021

SCALE 3/8" = 1'
 UNLESS OTHERWISE NOTED

DWG NUMBER 4 OF N/A

LIGHTING PLOT MOTOR PLAN