

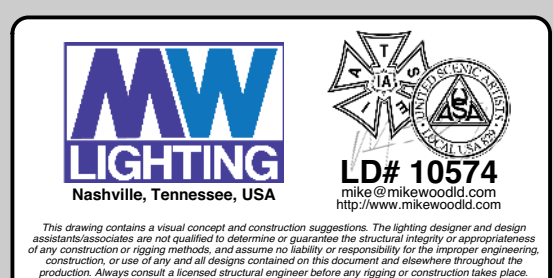
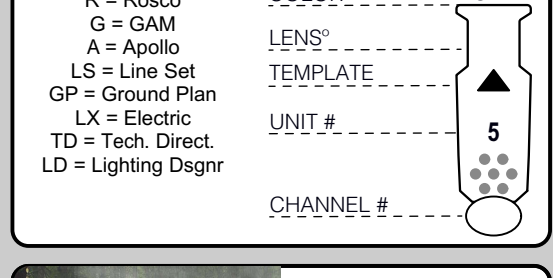
**KEY TO INSTRUMENTATION**

	SolaSpot 1000	12
	SolaFrame Theatre	6
	Elation Artiste Picasso	17
	Robe BMFL Followspot	4
	CHAUVET R2 WASH	21
	ETC Source-4 10°	5
	ETC Source-4 19°	4
	ETC Source 4 26°	4
	ETC S4-14° LED Tungs	10
	ETC S4-36° LED Tungs	11
	ETC S4-14° LED Lustr	6
	ETC S4-19° LED Lustr	15
	ETC S4-26° LED Lustr	16
	ETC S4-36° LED Lustr	24
	ETC S4-50° LED Lustr	4
	ETC S4-70° LED Lustr	6
	ETC S4-90° LED Lustr	2
	Ovation E-260 WW 36	7
	Ovation E-260 WW 50°	2
	ETC ColorSource PAR-MR	27
	ETC S4 Fresnel Lustr	6
	Stormy Strobe	2
	Star Strobe	18
	ETC ColorSource Linear 4 Deep Blue	10

**GENERAL NOTES**

ABBREVIATIONS:  
 R = Rosco  
 G = GAM  
 A = Apollo  
 LS = Line Set  
 GP = Ground Plan  
 LX = Electric  
 TD = Tech. Direct.  
 LD = Lighting Design

**LEGEND**



**REVISION HISTORY**

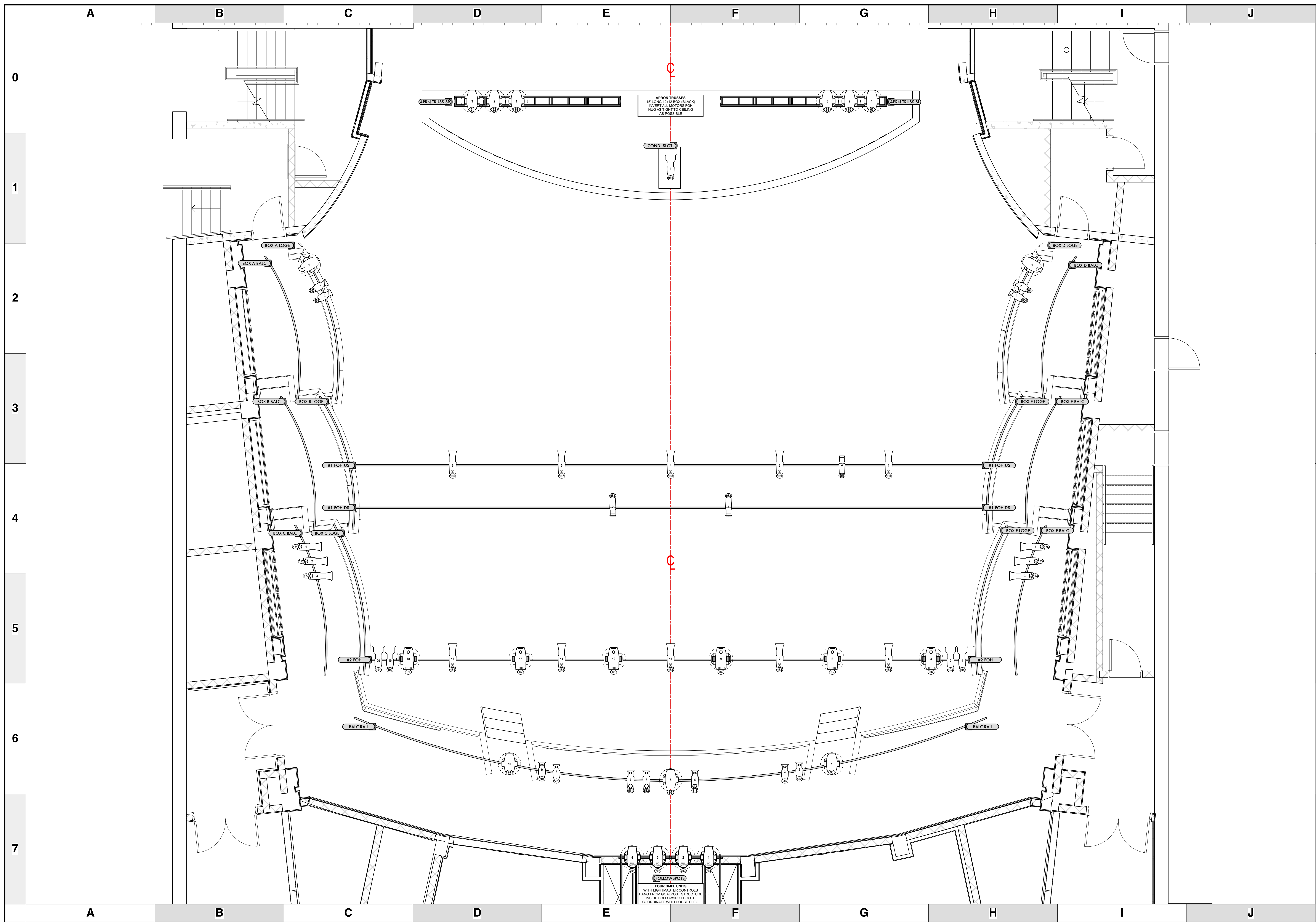
NO.	REVISION	DATE	BY
A01	SCENIC LAYOUT / DOC PREP	28 MAY 21	DHT
A02	REVISION / GROUND PLANS	28 MAY 21	MW
A03	PRELIMS / SHOP ORDER	09 JUNE 21	MW
A04	FIRST REVISION	14 JUNE 21	MW
A05	SECTION WORK	16 JUNE 21	DHT
A06	SHOP PREP	17 JUNE 21	MW
B01	SHOP PREP	18 JUNE 21	MW
B02	SHOP PREP (2 TRANSFORMERS)	22 JUNE 21	MW
C01c	LOAD IN	28 JUNE 21	MW

**INTO THE WOODS**

**PRODUCTION STAFF**  
 DIRECTOR ..... KAYCE GROGAN-WALLACE  
 LIGHTING DESIGNER ..... MIKE WOOD  
 ASSOC LD/PROGRAMMER ..... DALTON HAMILTON  
 ASSOC LIGHTING DSGNR ..... ABBY MAY  
 ASSISTANT LIGHTING DSGNR ..... CAMRYN BANKS  
 PROD. ELEC ..... LUCAS SEVEGE  
 PROD. MANAGER ..... JON SUMMERS  
 - THE BYERS THEATRE -  
 SANDY SPRINGS, GA - JULY 2021

SCALE 1/4" = 1'  
 UNLESS OTHERWISE NOTED  
 PG SIZE ARCH D  
 DWG NUMBER 1 OF 7

**LIGHT PLOT OVER STAGE**



**KEY TO INSTRUMENTATION**

	SolaSpot 1000	12
	SolaFrame Theatre	6
	Elation Artiste Picasso	17
	Robe BMFL Followspot	4
	CHAUVET R2 WASH	21
	ETC Source-4 10°	5
	ETC Source-4 19°	4
	ETC Source 4 26°	4
	ETC S4-14° LED Tungs	10
	ETC S4-36° LED Tungs	11
	ETC S4-14° LED Lustr	6
	ETC S4-19° LED Lustr	15
	ETC S4-26° LED Lustr	16
	ETC S4-36° LED Lustr	24
	ETC S4-50° LED Lustr	4
	ETC S4-70° LED Lustr	6
	ETC S4-90° LED Lustr	2
	Ovation E-260 WW 36	7
	Ovation E-260 WW 50°	2
	ETC ColorSource PAR-MR	27
	ETC S4 Fresnel Lustr	6
	Stormy Strobe	2
	Star Strobe	18
	ETC ColorSource Linear 4 Deep Blue	10

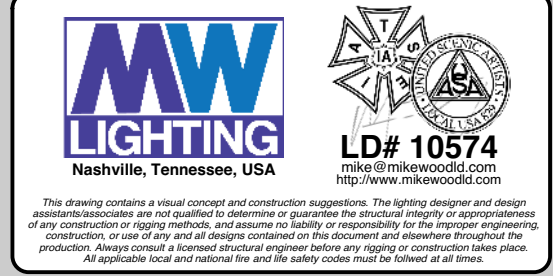
**GENERAL NOTES**

**LEGEND**

ABBREVIATIONS:  
R = Rosco  
G = GAIM  
A = Apollo  
LS = Line Set  
GP = Ground Plan  
LX = Electric  
TD = Tech. Direct.  
LD = Lighting Design

FOCUS  
COLOR

LENS  
TEMPLATE  
UNIT #  
CHANNEL #



**REVISION HISTORY**

NO.	REVISION	DATE	BY
A01	SCENIC LAYOUT / DOC PREP	28 MAY 21	DHT
A02	REVISION: GROUNDING	28 MAY 21	MW
A03	PRELIMS / SHOP ORDER	09 JUNE 21	MW
A04	FIRST REVISION	14 JUNE 21	MW
A05	SECTION WORK	16 JUNE 21	DHT
A06	SHOP PREP	17 JUNE 21	MW
B01	SHOP PREP	18 JUNE 21	MW
B02	SHOP PREP (FOLLOWSPOTS)	22 JUNE 21	MW
CD01c	LOAD IN	28 JUNE 21	MW

**INTO THE WOODS**

**PRODUCTION STAFF**

DIRECTOR ..... KAYCE GROGAN-WALLACE  
 LIGHTING DESIGNER ..... MIKE WOOD  
 ASSOC LD/PROGRAMMER ..... DALTON HAMILTON  
 ASSOC LIGHTING DSGNR ..... ABBY MAY  
 ASSISTANT LIGHTING DSGNR ..... CAMRYN BANKS  
 PROD. ELEC. .... LUCAS SEVEGE  
 PROD. MANAGER ..... JON SUMMERS

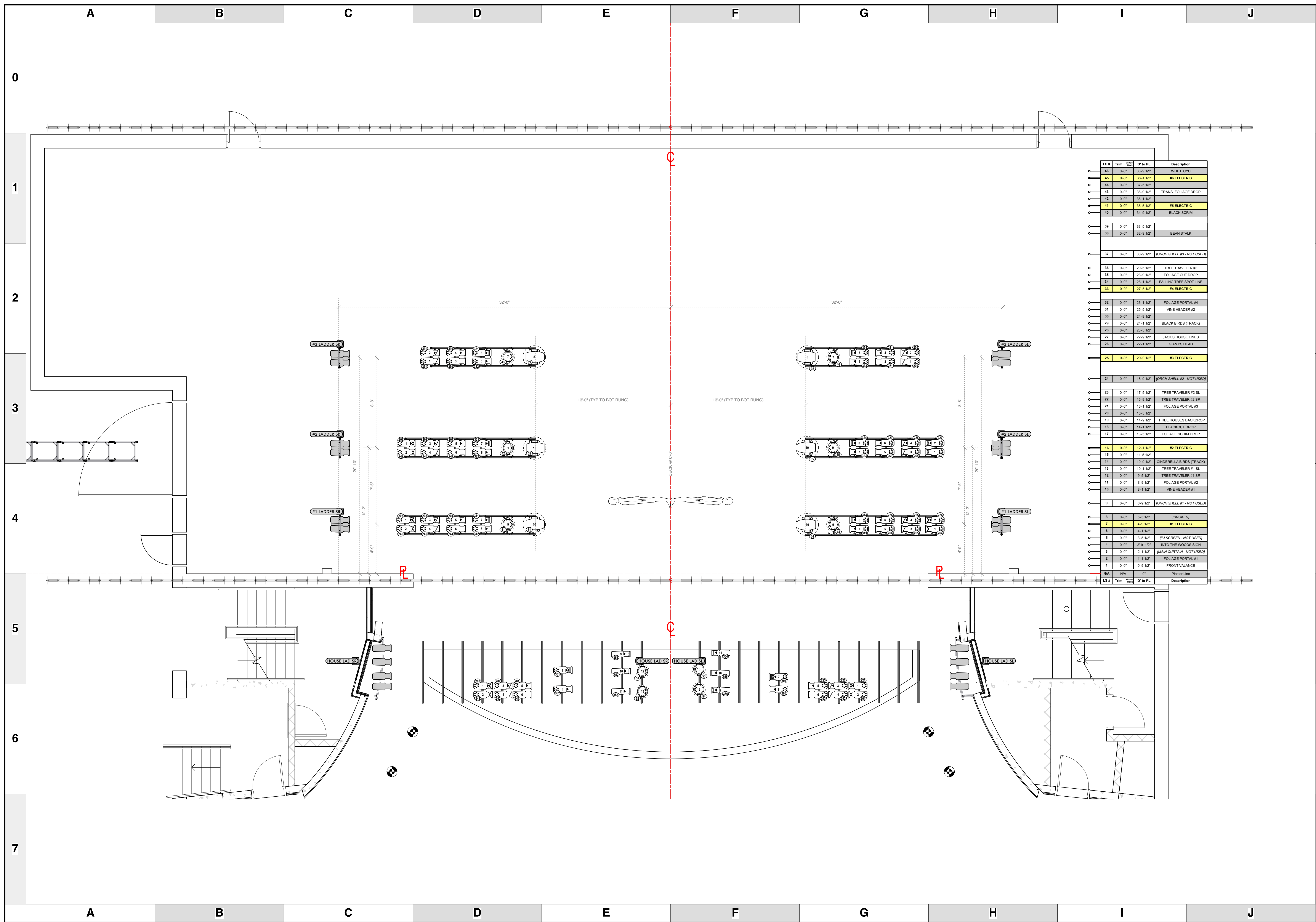
- THE BYERS THEATRE -  
 SANDY SPRINGS, GA. - JULY 2021

SCALE 1/4" = 1'  
 UNLESS OTHERWISE NOTED

PG SIZE ARCH D

DWG NUMBER  
**2**  
 OF 7

**LIGHT PLOT**  
 FOH



LS #	Trim	D' to PL	Description
46	0-0"	38'-9 1/2"	WHITE CYC
45	0-0"	38'-1 1/2"	#6 ELECTRIC
44	0-0"	37'-5 1/2"	
43	0-0"	36'-9 1/2"	TRANS. FOLIAGE DROP
42	0-0"	36'-1 1/2"	
41	0-0"	35'-5 1/2"	#5 ELECTRIC
40	0-0"	34'-9 1/2"	BLACK SCRIM
39	0-0"	33'-5 1/2"	
38	0-0"	32'-9 1/2"	BEAN STALK
37	0-0"	30'-9 1/2"	JDRCH SHELL #3 - NOT USED
36	0-0"	29'-5 1/2"	TREE TRAVELER #3
35	0-0"	28'-9 1/2"	FOLIAGE CUT DROP
34	0-0"	28'-1 1/2"	FALLING TREE SPOT LINE
33	0-0"	27'-5 1/2"	#4 ELECTRIC
32	0-0"	26'-1 1/2"	FOLIAGE PORTAL #4
31	0-0"	25'-5 1/2"	VINE HEADER #2
30	0-0"	24'-9 1/2"	
29	0-0"	24'-1 1/2"	BLACK BIRDS (TRACK)
28	0-0"	23'-5 1/2"	
27	0-0"	22'-9 1/2"	JACK'S HOUSE LINES
26	0-0"	22'-1 1/2"	GIANTS HEAD
25	0-0"	20'-9 1/2"	#3 ELECTRIC
24	0-0"	18'-9 1/2"	JDRCH SHELL #2 - NOT USED
23	0-0"	17'-5 1/2"	TREE TRAVELER #2 SL
22	0-0"	16'-9 1/2"	TREE TRAVELER #2 SR
21	0-0"	16'-1 1/2"	FOLIAGE PORTAL #3
20	0-0"	15'-5 1/2"	
19	0-0"	14'-9 1/2"	THREE HOUSES BACKDROP
18	0-0"	14'-1 1/2"	BLACKOUT DROP
17	0-0"	13'-5 1/2"	FOLIAGE SCRIM DROP
16	0-0"	12'-1 1/2"	#2 ELECTRIC
15	0-0"	11'-5 1/2"	
14	0-0"	10'-9 1/2"	CINDERELLA BIRDS (TRACK)
13	0-0"	10'-1 1/2"	TREE TRAVELER #1 SL
12	0-0"	9'-5 1/2"	TREE TRAVELER #1 SR
11	0-0"	8'-9 1/2"	FOLIAGE PORTAL #2
10	0-0"	8'-1 1/2"	VINE HEADER #1
9	0-0"	6'-9 1/2"	JDRCH SHELL #1 - NOT USED
8	0-0"	5'-6 1/2"	BROKEN
7	0-0"	4'-9 1/2"	#1 ELECTRIC
6	0-0"	4'-1 1/2"	
5	0-0"	3'-5 1/2"	(PU SCREEN - NOT USED)
4	0-0"	2'-9 1/2"	INTO THE WOODS SIGN
3	0-0"	2'-1 1/2"	(MAIN CURTAIN - NOT USED)
2	0-0"	1'-1 1/2"	FOLIAGE PORTAL #1
1	0-0"	0'-9 1/2"	FRONT VALANCE
N/A	N/A	0"	Plaster Line
LS #	Trim	D' to PL	Description

**KEY TO INSTRUMENTATION**

- SolaSpot 1000 12
- SolaFrame Theatre 6
- Elation Artiste Picasso 17
- Robe BMFL Followspot 4
- CHAUVET R2 WASH 21
- ETC Source-4 10° 5
- ETC Source-4 19° 4
- ETC Source 4 26° 4
- ETC S4-14° LED Tungs 10
- ETC S4-36° LED Tungs 11
- ETC S4-14° LED Lustr 6
- ETC S4-19° LED Lustr 15
- ETC S4-26° LED Lustr 16
- ETC S4-36° LED Lustr 24
- ETC S4-50° LED Lustr 4
- ETC S4-70° LED Lustr 6
- ETC S4-90° LED Lustr 2
- Octavon E-260 WW 36 7
- Octavon E-260 WW 50° 2
- ETC ColorSource PAR-MR 27
- ETC S4 Fresnel Lustr 6
- Stormy Strobe 2
- Star Strobe 18
- ETC ColorSource Linear 4 Deep Blue 10

**GENERAL NOTES**

**LEGEND**

ABBREVIATIONS:  
 R = Rosco  
 G = GAM  
 A = Apollo  
 LS = Line Set  
 GP = Ground Plan  
 LX = Electric  
 TD = Tech. Direct.  
 LD = Lighting Dsgnr.

FOCUS COLOR  
 LENS  
 TEMPLATE  
 UNIT #  
 CHANNEL #

**REVISION HISTORY**

NO.	REVISION	DATE	BY
A01	SCENIC LAYOUT / DOC PREP	28 MAY 21	DHT
A02	REVISION / GROUND PLANS	28 MAY 21	MW
A03	PRELIMS / SHOP ORDER	09 JUNE 21	MW
A04	FIRST REVISION	14 JUNE 21	MW
A05	SECTION WORK	16 JUNE 21	DHT
A06	SHOP HOUSES	17 JUNE 21	MW
B01	SHOP PREP	18 JUNE 21	MW
B02	SHOP PREP (2 TRACKS)	22 JUNE 21	MW
C01c	LOAD IN	28 JUNE 21	MW

**INTO THE WOODS**

**PRODUCTION STAFF**  
 DIRECTOR ..... KAYCE GROGAN-WALLACE  
 LIGHTING DESIGNER ..... MIKE WOOD  
 ASSOC LD/PROGRAMMER ..... DALTON HAMILTON  
 ASSOC LIGHTING DSGNR ..... ABBY MAY  
 ASSISTANT LIGHTING DSGNR ..... CAMRYN BANKS  
 PROD. ELEC ..... LUCAS SEVEGE  
 PROD. MANAGER ..... JON SUMMERS

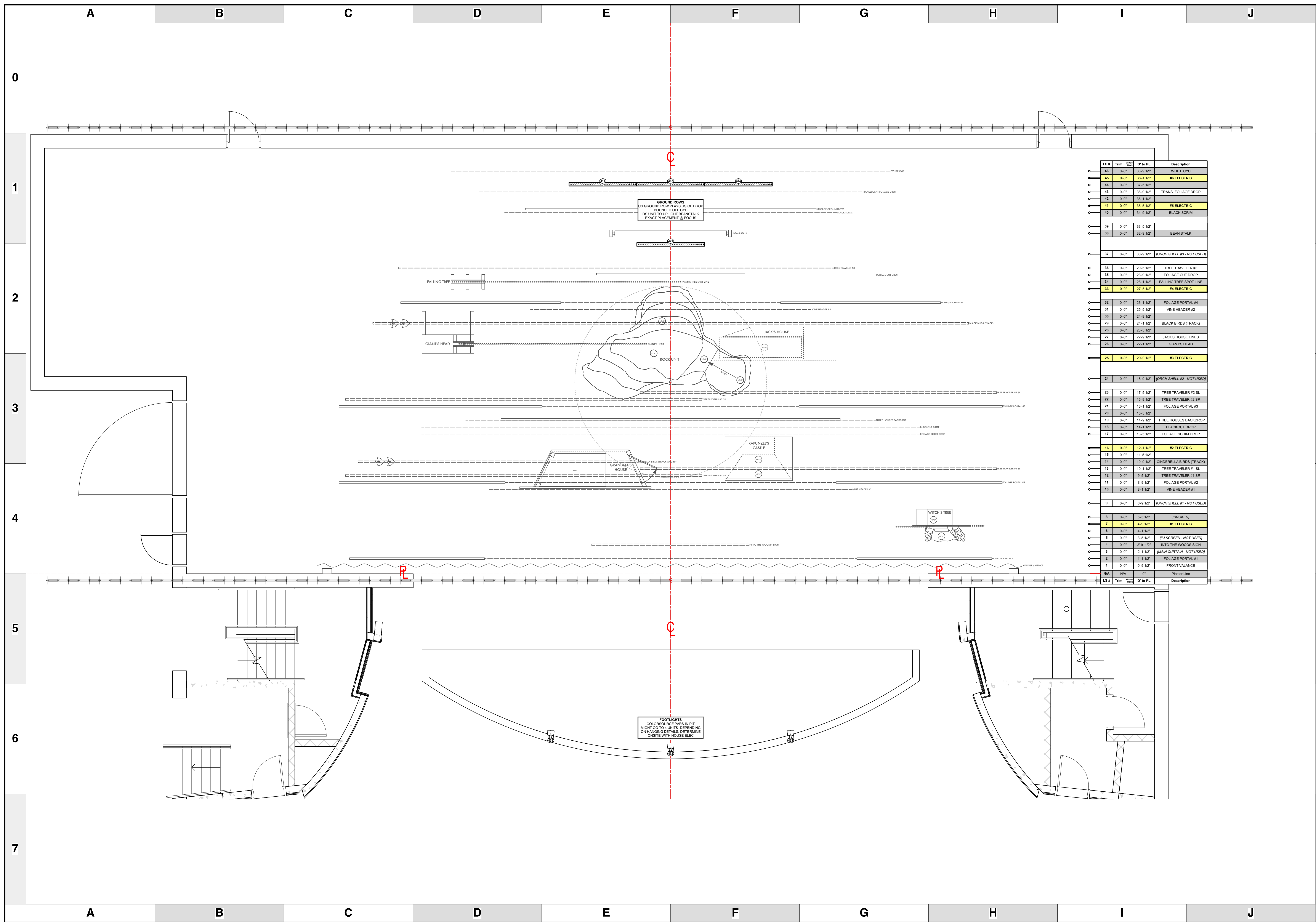
**- THE BYERS THEATRE -**  
 SANDY SPRINGS, GA - JULY 2021

SCALE 3/8" = 1'  
 UNLESS OTHERWISE NOTED

PG SIZE ARCH D

DWG NUMBER **3** OF 7

**LIGHT PLOT**  
 LADDERS & SIDE LIGHT



**KEY TO INSTRUMENTATION**

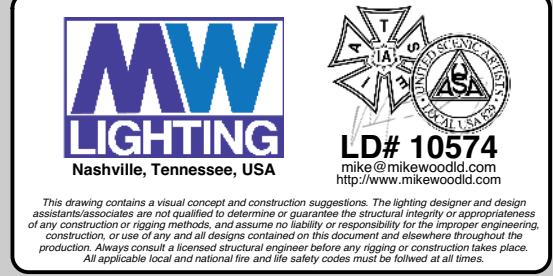
	SolaSpot 1000	12
	SolaFrame Theatre	6
	Elation Artiste Picasso	17
	Robe BMFL Followspot	4
	CHAUVET R2 WASH	21
	ETC Source-4 10°	5
	ETC Source-4 19°	4
	ETC Source 4 26°	4
	ETC S4-14° LED Tungs	10
	ETC S4-36° LED Tungs	11
	ETC S4-14° LED Lustr	6
	ETC S4-19° LED Lustr	15
	ETC S4-26° LED Lustr	16
	ETC S4-36° LED Lustr	24
	ETC S4-50° LED Lustr	4
	ETC S4-70° LED Lustr	6
	ETC S4-90° LED Lustr	2
	Ovation E-260 WW 36	7
	Ovation E-260 WW 50°	2
	ETC ColorSource PAR-MR	27
	ETC S4 Fresnel Lustr	6
	Stormy Strobe	2
	Star Strobe	18
	ETC ColorSource Linear 4 Deep Blue	10

**GENERAL NOTES**

ABBREVIATIONS:  
 R = Rosco  
 A = Apollo  
 LS = Line Set  
 GP = Ground Plan  
 TD = Tech. Direct.  
 LD = Lighting Design

**LEGEND**

FOCUS COLOR	FOC CLR
LENS	LEN
TEMPLATE	TEMP
UNIT #	UNIT #
CHANNEL #	CHANNEL #



**REVISION HISTORY**

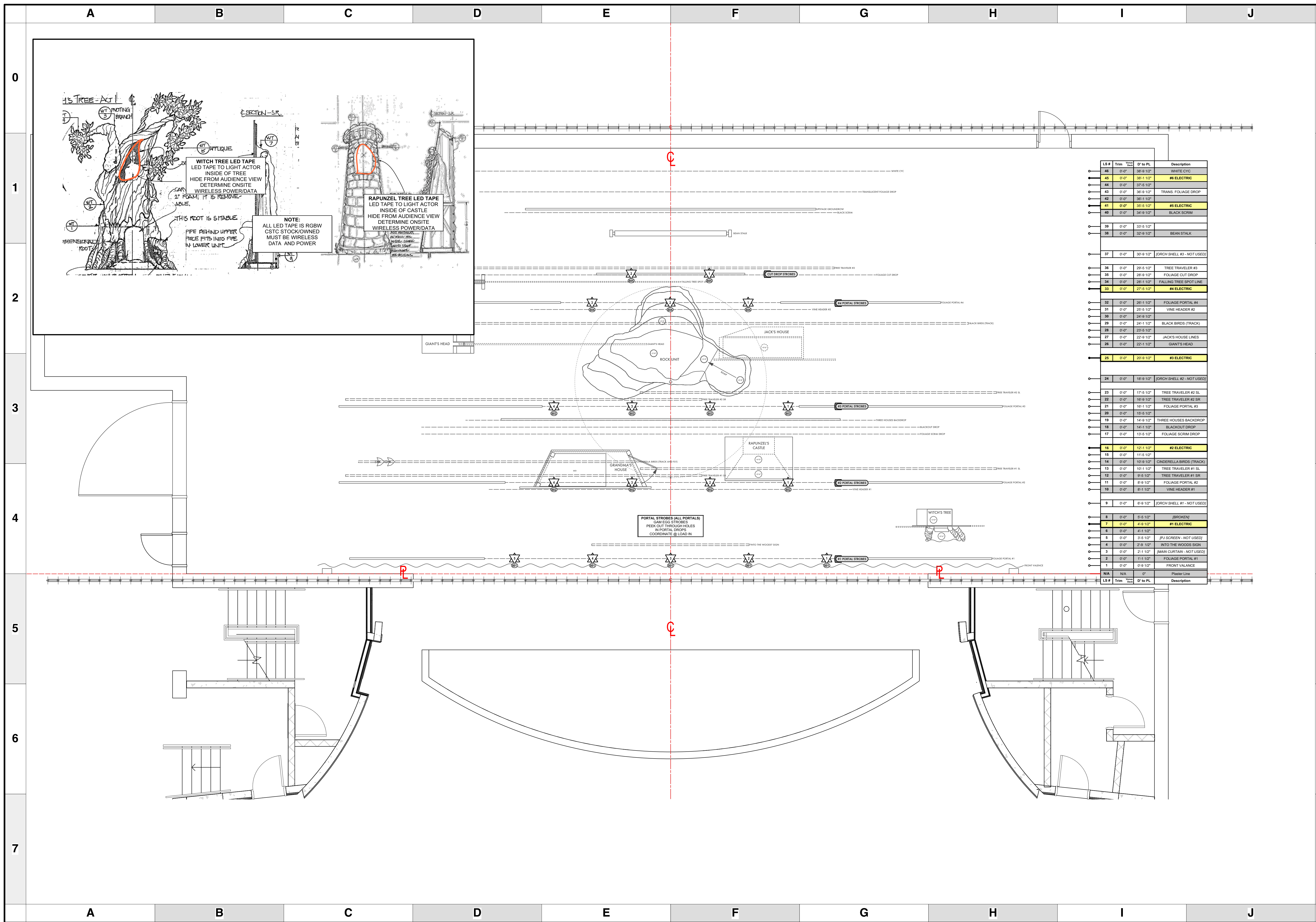
NO.	REVISION	DATE	BY
A01	SCENIC LAYOUT / DOC PREP	28 MAY 21	DHT
A02	REVISION: GROUND ROWS	28 MAY 21	MW
A03	PRELIMS / SHOP ORDER	09 JUNE 21	MW
A04	FIRST REVISION	14 JUNE 21	MW
A05	SECTION WORK	16 JUNE 21	DHT
A06	SHOP PREP	17 JUNE 21	MW
B01	SHOP PREP	18 JUNE 21	MW
B02	SHOP PREP (2 TRACKS)	22 JUNE 21	MW
B03	LOAD IN	28 JUNE 21	MW

**INTO THE WOODS**

**PRODUCTION STAFF**  
 DIRECTOR ..... KAYCE GROGAN-WALLACE  
 LIGHTING DESIGNER ..... MIKE WOOD  
 ASSOC LD/PROGRAMMER ..... DALTON HAMILTON  
 ASSOC LIGHTING DSGNR ..... ABBY MAY  
 ASSISTANT LIGHTING DSGNR ..... CAMRYN BANKS  
 PROD. ELEC ..... LUCAS SEVEGE  
 PROD. MANAGER ..... JON SUMMERS  
**- THE BYERS THEATRE -**  
 SANDY SPRINGS, GA - JULY 2021

SCALE 1/4" = 1'  
 UNLESS OTHERWISE NOTED  
 PG SIZE ARCH D  
 DWG NUMBER **4**  
 OF 7

**LIGHT PLOT**  
 DECK UNITS



**KEY TO INSTRUMENTATION**

	SolaSpot 1000	12
	SolaFrame Theatre	6
	Elation Artiste Picasso	17
	Robe BMFL Followspot	4
	CHAUVET R2 WASH	21
	ETC Source-4 10°	5
	ETC Source-4 19°	4
	ETC Source-4 26°	4
	ETC S4-14° LED Tungs	10
	ETC S4-36° LED Tungs	11
	ETC S4-14° LED Lustr	6
	ETC S4-19° LED Lustr	15
	ETC S4-26° LED Lustr	16
	ETC S4-36° LED Lustr	24
	ETC S4-50° LED Lustr	4
	ETC S4-70° LED Lustr	6
	ETC S4-90° LED Lustr	2
	Ovation E-260 WW 36	7
	Ovation E-260 WW 50°	2
	ETC ColorSource PAR-MR	27
	ETC S4 Fresnel Lustr	6
	Stormy Strobe	2
	Star Strobe	18
	ETC ColorSource Linear 4 Deep Blue	10

**GENERAL NOTES**

**ABBREVIATIONS:**  
 R = Rosco  
 G = GAM  
 A = Apollo  
 LS = Line Set  
 GP = Ground Plan  
 LX = Electric  
 TD = Tech. Direct.  
 LD = Lighting Dsgnr

**FOCUS COLOR:** FOC CLR

**LENS:** LENS

**TEMPLATE:** TEMPLATE

**UNIT #:** UNIT #

**CHANNEL #:** CHANNEL #



**REVISION HISTORY**

NO.	REVISION	DATE	BY
A01	SCENIC LAYOUT / DOC PREP	28 MAY 21	DHT
A02	REVISION: GROUND PLANS	28 MAY 21	MW
A03	PRELIMS / SHOP ORDER	09 JUNE 21	MW
A04	FIRST REVISION	14 JUNE 21	MW
A05	SECTION WORK	16 JUNE 21	DHT
A06	SHOP PREP	17 JUNE 21	MW
B01	SHOP PREP	18 JUNE 21	MW
B02	SHOP PREP (2 TRANSFORMERS)	22 JUNE 21	MW
CD01c	LOAD IN	28 JUNE 21	MW

**INTO THE WOODS**

**PRODUCTION STAFF**  
 DIRECTOR: KAYCE GROGAN-WALLACE  
 LIGHTING DESIGNER: MIKE WOOD  
 ASSOC LD/PROGRAMMER: DALTON HAMILTON  
 ASSOC LIGHTING DSGNR: ABBY MAY  
 ASSISTANT LIGHTING DSGNR: CAMRYN BANKS  
 PROD. ELEC: LUCAS SEVEGE  
 PROD. MANAGER: JON SUMMERS

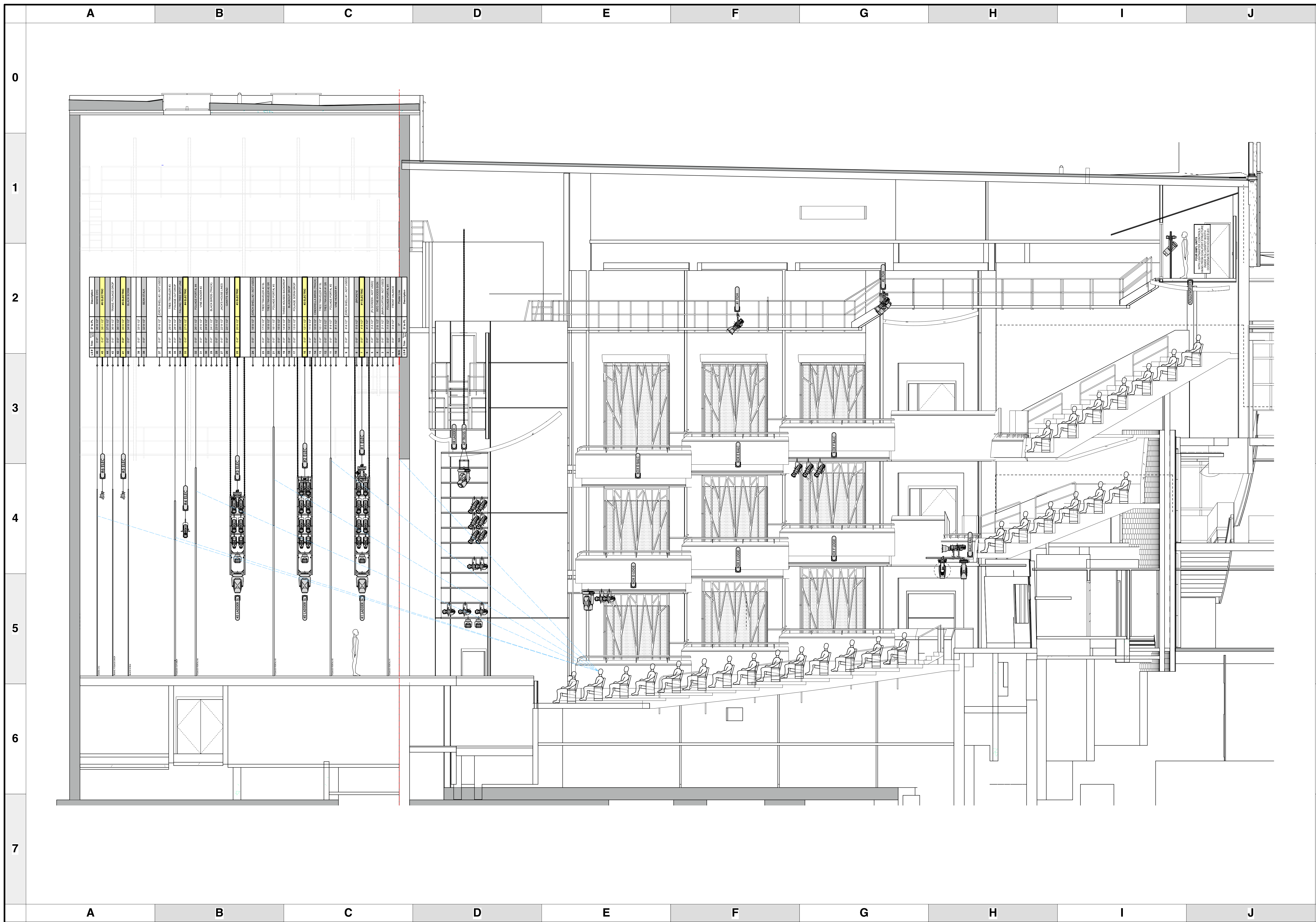
**- THE BYERS THEATRE -**  
 SANDY SPRINGS, GA. - JULY 2021

SCALE: 3/8"=1'  
 UNLESS OTHERWISE NOTED

PG SIZE: ARCH D

DWG NUMBER: **5**  
 OF 7

**LIGHT PLOT**  
 SET MOUNT / PRACTICALS



NO.	TYPE	QTY	DESCRIPTION
1	ETC	1	ETC SOURCE 4 10"
2	ETC	1	ETC SOURCE 4 19"
3	ETC	1	ETC SOURCE 4 26"
4	ETC	1	ETC S4-14" LED TUNGS
5	ETC	1	ETC S4-36" LED TUNGS
6	ETC	1	ETC S4-14" LED LUSTR
7	ETC	1	ETC S4-19" LED LUSTR
8	ETC	1	ETC S4-26" LED LUSTR
9	ETC	1	ETC S4-36" LED LUSTR
10	ETC	1	ETC S4-50" LED LUSTR
11	ETC	1	ETC S4-70" LED LUSTR
12	ETC	1	ETC S4-90" LED LUSTR
13	OVATION	1	OVATION E-260 WW 36"
14	OVATION	1	OVATION E-260 WW 50"
15	ETC	1	ETC COLORSOURCE PAR-MR
16	ETC	1	ETC S4 FRESNEL LUSTR
17	STORMY	1	STORMY STROBE
18	STAR	1	STAR STROBE
19	ETC	1	ETC COLORSOURCE LINEAR 4 DEEP BLUE

### KEY TO INSTRUMENTATION

	SolaSpot 1000	12
	SolaFrame Theatre	6
	Elation Artiste Picasso	17
	Robe BMFL Followspot	4
	CHAUVET R2 WASH	21
	ETC Source-4 10"	5
	ETC Source-4 19"	4
	ETC Source 4 26"	4
	ETC S4-14" LED Tungs	10
	ETC S4-36" LED Tungs	11
	ETC S4-14" LED Lustr	6
	ETC S4-19" LED Lustr	15
	ETC S4-26" LED Lustr	16
	ETC S4-36" LED Lustr	24
	ETC S4-50" LED Lustr	4
	ETC S4-70" LED Lustr	6
	ETC S4-90" LED Lustr	2
	Ovation E-260 WW 36	7
	Ovation E-260 WW 50"	2
	ETC ColorSource PAR-MR	27
	ETC S4 Fresnel Lustr	6
	Stormy Strobe	2
	Star Strobe	18
	ETC ColorSource Linear 4 Deep Blue	10

### GENERAL NOTES

**ABBREVIATIONS:**  
 R = Rosco  
 G = GAM  
 A = Apollo  
 LS = Line Set  
 GP = Ground Plan  
 LX = Electric  
 TD = Tech. Direct.  
 LD = Lighting Dsgnr

**LEGEND**  
 FOCUS COLOR  
 LENS  
 TEMPLATE  
 UNIT #  
 CHANNEL #



### REVISION HISTORY

NO.	REVISION	DATE	BY
A01	SCENIC LAYOUT / DOC PREP	28 MAY 21	DHT
A02	REVISIONS / CHANGES	28 MAY 21	MW
A03	PRELIMS / SHOP ORDER	09 JUNE 21	MW
A04	FIRST REVISION	14 JUNE 21	MW
A05	SECTION WORK	16 JUNE 21	DHT
A06	SHOP PREP / CHANGES	17 JUNE 21	MW
B01	SHOP PREP	18 JUNE 21	MW
B02	SHOP PREP / CHANGES	22 JUNE 21	MW
B03	LOAD IN	28 JUNE 21	MW

### INTO THE WOODS

**PRODUCTION STAFF**  
 DIRECTOR ..... KAYCE GROGAN-WALLACE  
 LIGHTING DESIGNER ..... MIKE WOOD  
 ASSOC LD/PROGRAMMER ..... DALTON HAMILTON  
 ASSOC LIGHTING DSGNR ..... ABBY MAY  
 ASSISTANT LIGHTING DSGNR ..... CAMRYN BANKS  
 PROD. ELEC ..... LUCAS SEVEGE  
 PROD. MANAGER ..... JON SUMMERS

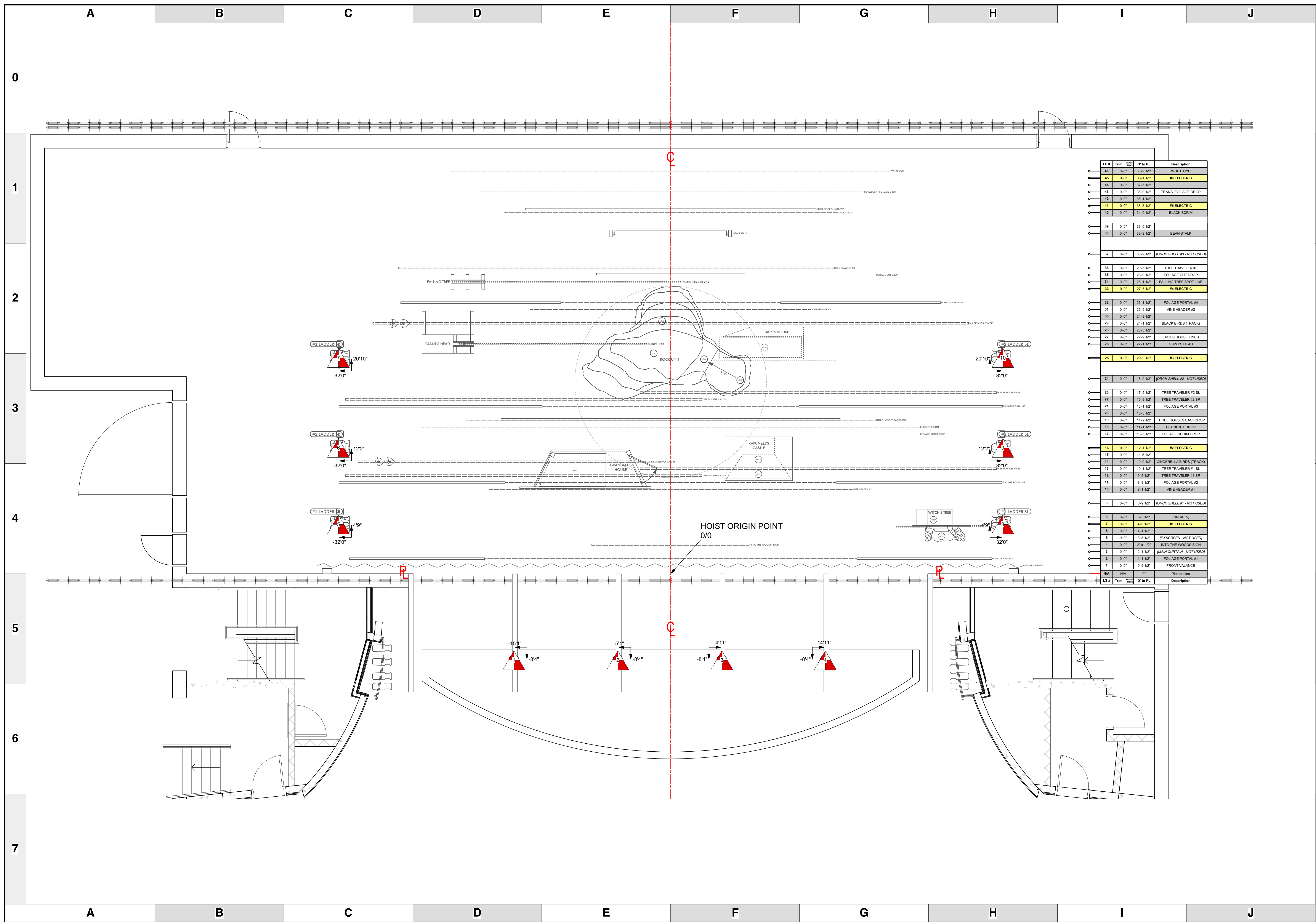
**- THE BYERS THEATRE -**  
 SANDY SPRINGS, GA - JULY 2021

SCALE 3/16" = 1'0"  
 UNLESS OTHERWISE NOTED

PG SIZE ARCH D

DWG NUMBER **6** OF 7

**LIGHT PLOT**  
 SL SECTION THRU CL



**KEY TO INSTRUMENTATION**

	SolaSpot 1000	12
	SolaFrame Theatre	6
	Elation Artiste Picasso	17
	Robe BMFL Followspot	4
	CHAUVET R2 WASH	21
	ETC Source-4 10°	5
	ETC Source-4 19°	4
	ETC Source 4 26°	4
	ETC S4-14° LED Tungs	10
	ETC S4-36° LED Tungs	11
	ETC S4-14° LED Lustr	6
	ETC S4-19° LED Lustr	15
	ETC S4-26° LED Lustr	16
	ETC S4-36° LED Lustr	24
	ETC S4-50° LED Lustr	4
	ETC S4-70° LED Lustr	6
	ETC S4-90° LED Lustr	2
	Ovation E-260 WW 36	7
	Ovation E-260 WW 50°	2
	ETC ColorSource PAR-MR	27
	ETC S4 Fresnel Lustr	6
	Stormy Strobe	2
	Star Strobe	18
	ETC ColorSource Linear 4 Deep Blue	10

**GENERAL NOTES**

ABBREVIATIONS:  
 R = Rosco  
 G = GAM  
 A = Apollo  
 LS = Line Set  
 GP = Ground Plan  
 TD = Tech. Direct.  
 LD = Lighting Design

**LEGEND**

FOCUS COLOR	FOC CLR
LENS	CLR
TEMPLATE	5
UNIT #	5
CHANNEL #	5



**REVISION HISTORY**

NO.	REVISION	DATE	BY
A01	SCENIC LAYOUT / DOC PREP	28 MAY 21	DHT
A02	REVISIONS / GROUND PLANS	28 MAY 21	MW
A03	PRELIMS / SHOP ORDER	09 JUNE 21	MW
A04	FIRST REVISION	14 JUNE 21	MW
A05	SECTION WORK	16 JUNE 21	DHT
A06	SHOP PREP	17 JUNE 21	MW
B01	SHOP PREP	18 JUNE 21	MW
B02	SHOP PREP (2 TRACKS)	22 JUNE 21	MW
C01c	LOAD IN	28 JUNE 21	MW

**INTO THE WOODS**

**PRODUCTION STAFF**  
 DIRECTOR ..... KAYCE GROGAN-WALLACE  
 LIGHTING DESIGNER ..... MIKE WOOD  
 ASSOC LD/PROGRAMMER ..... DALTON HAMILTON  
 ASSOC LIGHTING DSGNR ..... ABBY MAY  
 ASSISTANT LIGHTING DSGNR ..... CAMRYN BANKS  
 PROD. ELEC ..... LUCAS SEVEGE  
 PROD. MANAGER ..... JON SUMMERS  
**- THE BYERS THEATRE -**  
 SANDY SPRINGS, GA - JULY 2021

SCALE **3/8"=1'**  
UNLESS OTHERWISE NOTED  
 PG SIZE **ARCH D**  
 DWG NUMBER **7**  
OF 7

**LIGHTING MOTORS**  
 HOIST PLAN / DIMENSIONS