

### KEY TO INSTRUMENTATION

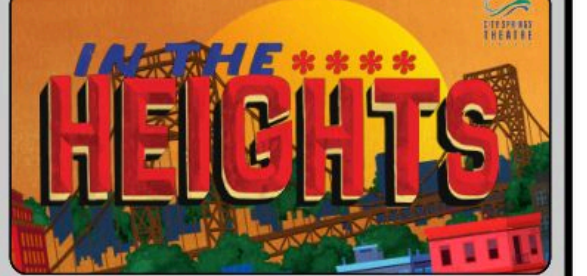
	Robe BMFL & LightMaster Followspot Controller	3
	Martin Mac Ultra Performance	12
	Martin Mac Encore Performance CLD	7
	High End SolaSpot 1000	12
	High End SolaFrame Theatre	6
	CHAUVET R2 WASH	21
	ETC 14" 750w	4
	ETC 26" 750w	10
	ETC 36" 750w	4
	ETC S4-10" LED Lustr	4
	ETC S4-14" LED Lustr	2
	ETC S4-19" LED Lustr	16
	ETC S4-26" LED Lustr	38
	ETC S4-36" LED Lustr	22
	ETC S4-10" LED Tungsten	14
	ETC S4-19" LED Tungsten	6
	ETC S4-26" LED Tungsten	4
	ETC S4-36" LED Tungsten	1
	Ovation E260 14"	4
	Ovation E260 36"	9
	ETC S4-PAR (MFL)	15
	ETC S4-PAR (WFL)	8
	ETC ColorSource PAR (No Lens)	32
	ETC ColorSource PAR (Med. Owl)	2
	ETC ColorSource PAR (Wide Rnd)	4
	Chauvet Strike 4	3
	Clay Paky Stormy Strobe	2
	ETC ColorSource Linear 4	14
	Color Kinetics Colorblast 12	19

LS #	Trim	Vertex Deck	D' to PL	Description
42	0'-0"	36'-1 1/2"		[EMPTY]
41	0'-0"	35'-5 1/2"		[EMPTY]
40	0'-0"	34'-9 1/2"		[EMPTY]
39	0'-0"	33'-5 1/2"		[EMPTY]
38	0'-0"	32'-9 1/2"		#9 ELECTRIC
37	0'-0"	30'-9 1/2"		[ORCH SHELL 3]
36	0'-0"	29'-5 1/2"		[EMPTY]
35	0'-0"	28'-9 1/2"		[EMPTY]
34	0'-0"	28'-1 1/2"		[EMPTY]
33	0'-0"	27'-5 1/2"		[EMPTY]
32	0'-0"	26'-1 1/2"		STAR CURTAIN
31	0'-0"	25'-5 1/2"		SHOW DROP
30	0'-0"	24'-9 1/2"		[EMPTY]
29	0'-0"	24'-1 1/2"		#8 ELECTRIC
28	0'-0"	23'-5 1/2"		BLACK LEGS
27	0'-0"	22'-9 1/2"		BLACK SCRIM
26	0'-0"	22'-1 1/2"		#4 BLACK BORDER
25	0'-0"	20'-9 1/2"		#7 ELECTRIC
24	0'-0"	18'-9 1/2"		[ORCH SHELL 2]
23	0'-0"	17'-5 1/2"		B/O TRAV (AS LEGS)
22	0'-0"	16'-9 1/2"		#3 BLACK BORDER
21	0'-0"	16'-1 1/2"		BODEGA BACKING
20	0'-0"	15'-5 1/2"		#6 ELECTRIC
19	0'-0"	14'-9 1/2"		[EMPTY]
18	0'-0"	14'-1 1/2"		[EMPTY]
17	0'-0"	13'-5 1/2"		CAR SERVICE BACKING
16	0'-0"	12'-1 1/2"		#5 ELECTRIC
15	0'-0"	11'-5 1/2"		[EMPTY]
14	0'-0"	10'-9 1/2"		#2 BLACK BORDER
13	0'-0"	10'-1 1/2"		AUDIO MONITORS
12	0'-0"	9'-5 1/2"		[EMPTY]
11	0'-0"	8'-9 1/2"		#4 ELECTRIC
10	0'-0"	8'-1 1/2"		#2 BLACK LEGS
9	0'-0"	6'-9 1/2"		[ORCH SHELL 1]
8	0'-0"	5'-5 1/2"		#3 ELECTRIC
7	0'-0"	4'-9 1/2"		[EMPTY]
6	0'-0"	4'-1 1/2"		#2 ELECTRIC
5	0'-0"	3'-5 1/2"		[PROJ SCREEN]
4	0'-0"	2'-9 1/2"		#1 ELECTRIC
3	0'-0"	2'-1 1/2"		MAIN CURTAIN
2	0'-0"	1'-1 1/2"		#1 BLACK LEGS
1	0'-0"	0'-9 1/2"		#1 BLACK BORDER
N/A	N/A	0"		PLASTER LINE

### LEGEND

ABBREVIATIONS: R = Rosco, G = GAM, A = Apollo, LS = Line Set, GP = Ground Plan, LX = Electric, TD = Tech. Direct, LD = Lighting Dsgnr

FOCUS COLOR, LENS, TEMPLATE, UNIT #, ENGINE TYPE, CHANNEL #



**MW LIGHTING** LD# 10574

1000 WILSON ROAD, SUITE 100, SANDY SPRINGS, GA 30076  
 770.433.1111 | www.mwlighting.com

### REVISION HISTORY

NO.	REVISION	DATE	BY
001	SCENE LAYOUT / DOC PREP	31 AUG 22	MWY
002	FINAL RELEASE / FDS	14 SEPT 22	MWY
003	STRIKE UPDATES	14 SEPT 22	MWY
004	PRODUCTION	22 SEPT 22	MWY
005	LOAD IN	11 OCT 22	MWY

### IN THE HEIGHTS

PRODUCTION STAFF  
 DIRECTOR: NATALIE CARUNCHO  
 LIGHTING DESIGNER: MIKE WOOD  
 ASSOC. PROGRAMMER: DALTON HAMILTON  
 ASSOC. LIGHTING DSGNR: ASBY MAY  
 ASST. LIGHTING DSGNR: MARCELLA BARBEAU  
 PROD. ELEC: MATTHEW PEDDIE

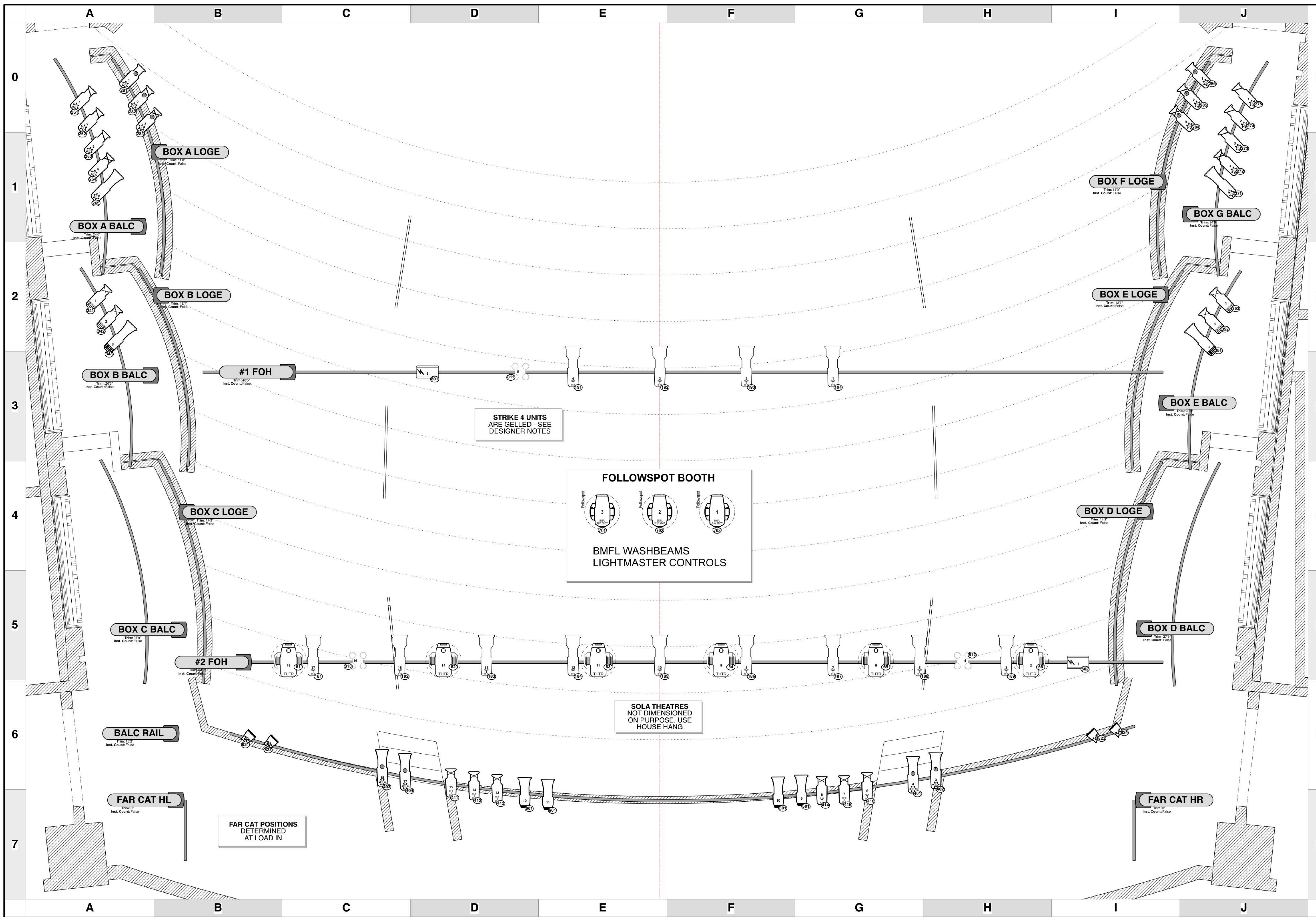
**THE BYERS THEATRE**  
 SANDY SPRINGS, GA - OCTOBER / NOVEMBER 2022

SCALE 3/8" = 1'  
 UNLESS OTHERWISE NOTED

PG SIZE ARCH D

DWG NUMBER **1** OF 6

**LIGHTING PLOT**  
 OVERTAGE HANG



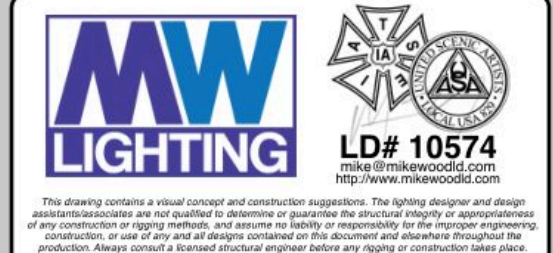
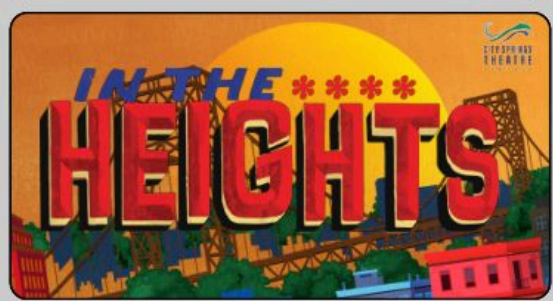
**KEY TO INSTRUMENTATION**

	Robe BMFL & LightMaster Followspot Controller	3
	Martin Mac Ultra Performance	12
	Martin Mac Encore Performance CLD	7
	High End SolaSpot 1000	12
	High End SolaFrame Theatre	6
	CHAUVET R2 WASH	21
	ETC 14" 750w	4
	ETC 26" 750w	10
	ETC 36" 750w	4
	ETC S4-10" LED Lustr	4
	ETC S4-14" LED Lustr	2
	ETC S4-19" LED Lustr	16
	ETC S4-26" LED Lustr	39
	ETC S4-36" LED Lustr	22
	ETC S4-10" LED Tungsten	14
	ETC S4-19" LED Tungsten	6
	ETC S4-26" LED Tungsten	4
	ETC S4-36" LED Tungsten	1
	Ovation E260 14"	4
	Ovation E260 36"	9
	Ovation E260 36"	9
	ETC S4-PAR (MFL)	15
	ETC S4-PAR (WFL)	8
	ETC ColorSource PAR (No Lens)	32
	ETC ColorSource PAR (Med. Ovl)	2
	ETC ColorSource PAR (Wide Rnd)	4
	Chauvet Strike 4	3
	Clay Paky Stormy Strobe	2
	ETC ColorSource Linear 4	14
	Color Kinetics Colorblast 12	19

**LEGEND**

ABBREVIATIONS: FOCUS, COLOR, FOC, CLR  
 R = Rosco  
 G = GAM  
 A = Apollo  
 LS = Line Set  
 GP = Ground Plan  
 LX = Electric  
 TD = Tech. Direct.  
 LD = Lighting Dsgnr

LENS', TEMPLATE, UNIT #, ENGINE TYPE, CHANNEL #



**REVISION HISTORY**

NO.	REVISION	DATE	BY
001	SCENIC LAYOUT / DOC PREP	31 AUG 22	MYW
002	FINAL RELEASE / FROD	14 SEPT 22	MYW
003	STROBE UPDATES	14 SEPT 22	MYW
004	PROCESSED	22 SEPT 22	MYW
005	LOAD IN	11 OCT 22	MYW

**IN THE HEIGHTS**

**PRODUCTION STAFF**

DIRECTOR: NATALIE CARUNCHO  
 LIGHTING DESIGNER: MIKE WOOD  
 ASSOC. PROGRAMMER: DALTON HAMILTON  
 ASSOC. LIGHTING DESIGNER: ASBY MAY  
 ASST. LIGHTING DESIGNER: MARCELLA BARBEAU  
 PROD. ELEC: MATTHEW PEDDIE

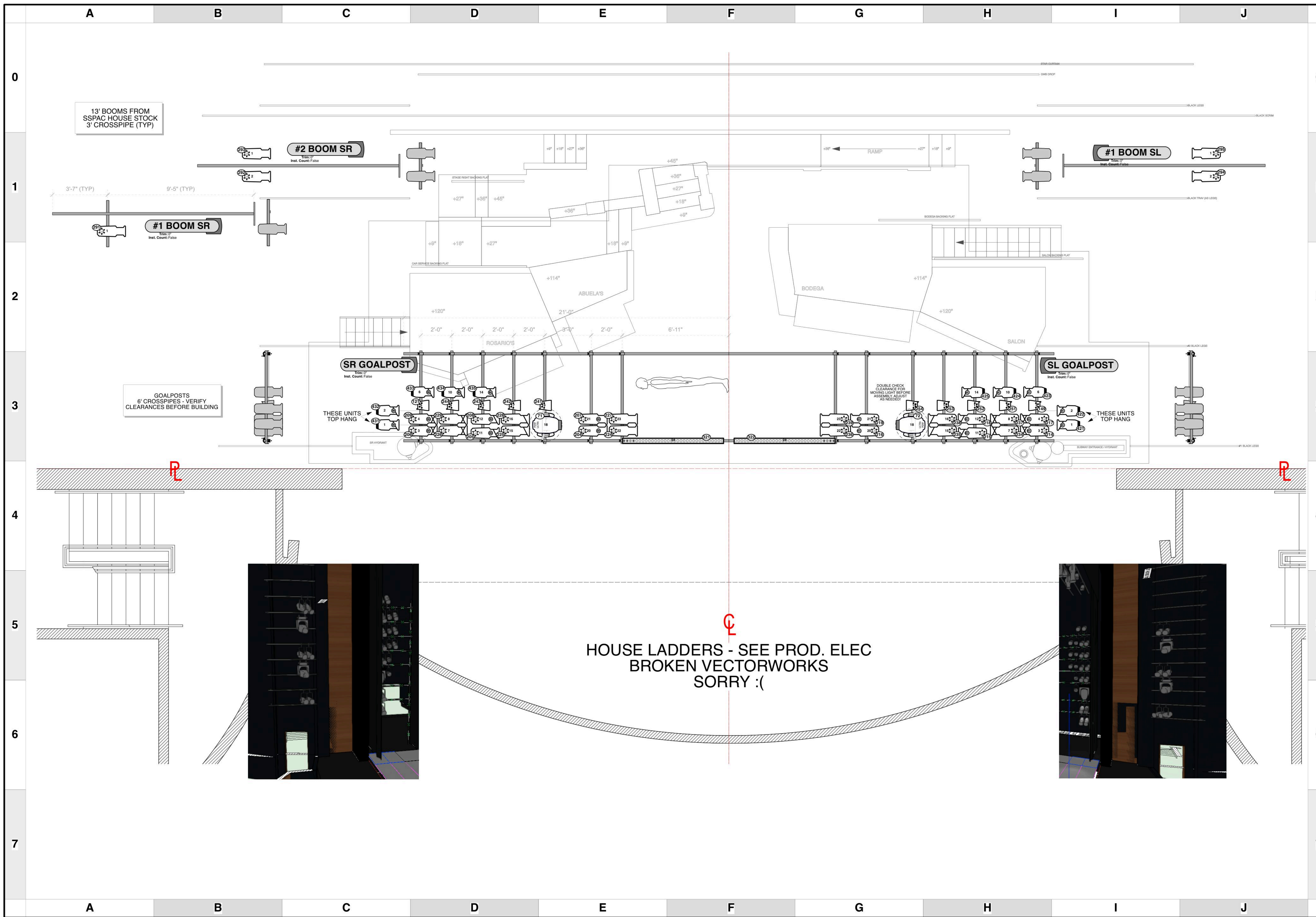
**- THE BYERS THEATRE -**  
 SANDY SPRINGS, GA - OCTOBER / NOVEMBER 2022

SCALE 3/8" = 1'  
 UNLESS OTHERWISE NOTED

PG SIZE ARCH D

DWG NUMBER **2**

**LIGHTING PLOT**  
 FRONT OF HOUSE



**KEY TO INSTRUMENTATION**

	Robe BMFL & LightMaster Followspot Controller	3
	Martin Mac Ultra Performance	12
	Martin Mac Encore Performance CLD	7
	High End SolaSpot 1000	12
	High End SolaFrame Theatre	6
	CHAUVET R2 WASH	21
	ETC 14\"/>	4
	ETC 26\"/>	10
	ETC 36\"/>	4
	ETC S4-10\"/>	4
	ETC S4-14\"/>	2
	ETC S4-19\"/>	16
	ETC S4-26\"/>	39
	ETC S4-36\"/>	22
	ETC S4-10\"/>	14
	ETC S4-19\"/>	6
	ETC S4-26\"/>	4
	ETC S4-36\"/>	1
	Ovation E260 14"	4
	Ovation E260 36"	9
	Ovation E260 36"	9
	ETC S4-PAR (MFL)	15
	ETC S4-PAR (WFL)	8
	ETC ColorSource PAR (No Lens)	32
	ETC ColorSource PAR (Med. Ovl)	2
	ETC ColorSource PAR (Wide Rnd)	4
	Chauvet Strike 4	3
	Clay Paky Stormy Strobe	2
	ETC ColorSource Linear 4	14
	Color Kinetics Colorblast 12	19

**LEGEND**

ABBREVIATIONS: R = Rosco, G = GAM, A = Apollo, LS = Line Set, GP = Ground Plan, TD = Tech. Direct., LD = Lighting Dsgnr.

FOCUS: FOC, CLR

COLOR: COLOR

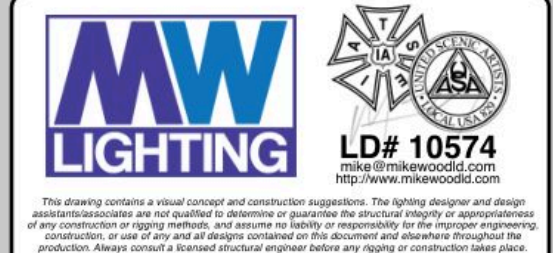
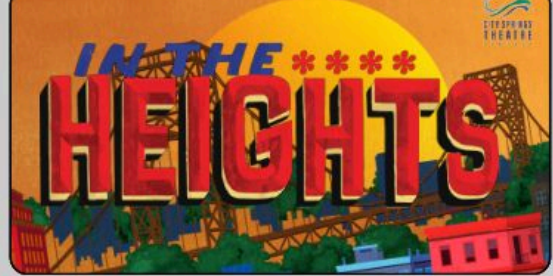
LENS: LENS

TEMPLATE: TEMPLATE

UNIT #: UNIT #

ENGINE TYPE: ENGINE TYPE

CHANNEL #: CHANNEL #



**REVISION HISTORY**

NO.	REVISION	DATE	BY
001	SCENE LAYOUT / DOC PREP	31 AUG 22	MIW
002	FINAL RELEASE / FDS	14 SEPT 22	MIW
003	STROBE UPDATES	14 SEPT 22	MIW
004	PROCESSES	22 SEPT 22	MIW
005	LOAD IN	11 OCT 22	MIW

**IN THE HEIGHTS**

**PRODUCTION STAFF**

DIRECTOR: NATALIE CARUNCHO  
 LIGHTING DESIGNER: MIKE WOOD  
 ASSOC. PROGRAMMER: DALTON HAMILTON  
 ASSOC. LIGHTING DSGNR: ASBY MAY  
 ASST. LIGHTING DSGNR: MARCELLA BARBEAU  
 PROD. ELEC: MATTHEW PEDDIE

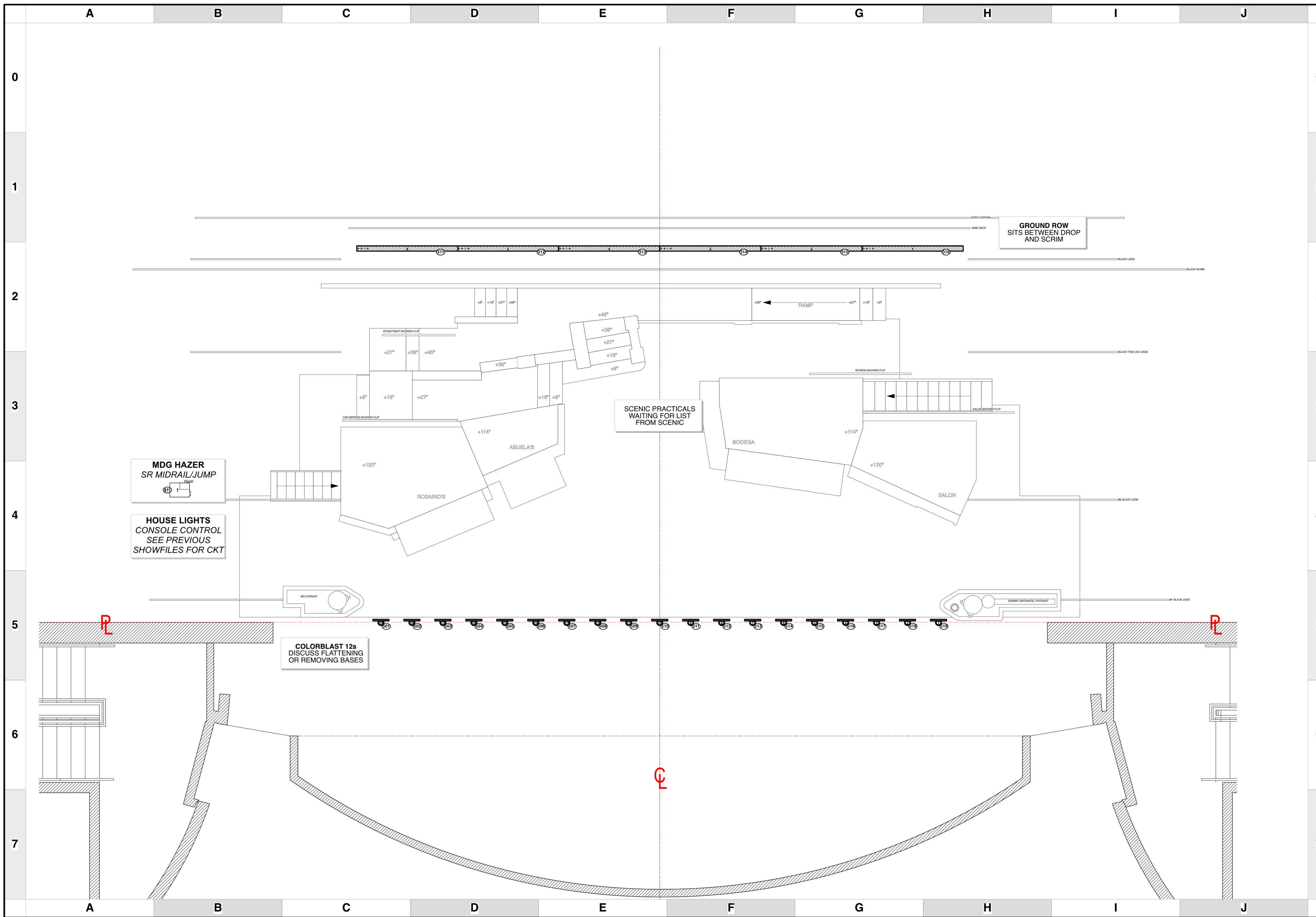
**- THE BYERS THEATRE -**  
 SANDY SPRINGS, GA - OCTOBER / NOVEMBER 2022

SCALE **3/8" = 1'**  
UNLESS OTHERWISE NOTED

PG SIZE **ARCH D**

DWG NUMBER **3**  
OF 6

**LIGHTING PLOT**  
 SIDE POSITIONS



**KEY TO INSTRUMENTATION**

	Robe BMFL & LightMaster Followspot Controller	3
	Martin Mac Ultra Performance	12
	Martin Mac Encore Performance CLD	7
	High End SolaSpot 1000	12
	High End SolaFrame Theatre	6
	CHAUVET R2 WASH	21
	ETC 14" 750w	4
	ETC 26" 750w	10
	ETC 36" 750w	4
	ETC S4-10" LED Lustr	4
	ETC S4-14" LED Lustr	2
	ETC S4-19" LED Lustr	16
	ETC S4-26" LED Lustr	39
	ETC S4-36" LED Lustr	22
	ETC S4-10" LED Tungsten	14
	ETC S4-19" LED Tungsten	6
	ETC S4-26" LED Tungsten	4
	ETC S4-36" LED Tungsten	1
	Ovation E260 14"	4
	Ovation E260 36"	9
	Ovation E260 36"	9
	ETC S4-PAR (MFL)	15
	ETC S4-PAR (WFL)	8
	ETC ColorSource PAR (No Lens)	32
	ETC ColorSource PAR (Med. Ovl.)	2
	ETC ColorSource PAR (Wide Rnd)	4
	Chauvet Strike 4	3
	Clay Paky Stormy Strobe	2
	ETC ColorSource Linear 4	14
	Color Kinetics Colorblast 12	19

**LEGEND**

ABBREVIATIONS: R = Rosco, G = GAM, A = Apollo, LS = Line Set, GP = Ground Plan, LX = Electric, TD = Tech. Direct., LD = Lighting Dsgnr.

FOCUS CLS, COLOR CLS, LENS', TEMPLATE, UNIT #, ENGINE TYPE, CHANNEL #



**MW LIGHTING** LD# 10574  
 www.mwlighting.com

**REVISION HISTORY**

NO.	REVISION	DATE	BY
001	SCENIC LAYOUT / DOC PREP	31 AUG 22	MIW
002	FINAL RELEASE / FDS	14 SEPT 22	MIW
003	STRUC UPDATES	14 SEPT 22	MIW
004	PRODUCTION	22 SEPT 22	MIW
005	LOAD IN	11 OCT 22	MIW

**IN THE HEIGHTS**

**PRODUCTION STAFF**  
 DIRECTOR: NATALIE CARUNCHO  
 LIGHTING DESIGNER: MIKE WOOD  
 ASSOC. PROGRAMMER: DALTON HAMILTON  
 ASSOC. LIGHTING DSGNR: ASBY MAY  
 ASST. LIGHTING DSGNR: MARCELLA BARBEAU  
 PROD. ELEC: MATTHEW PEDDIE

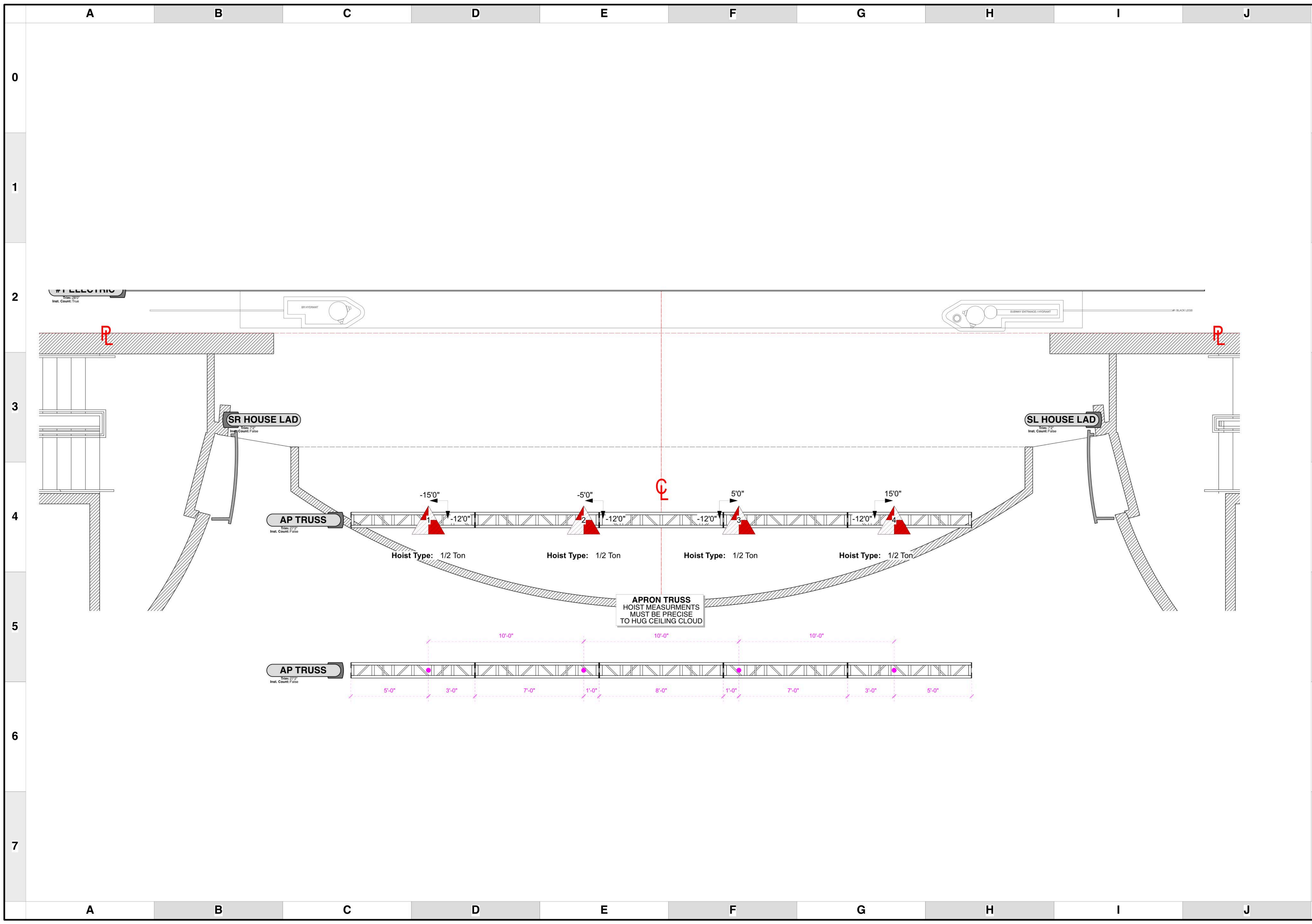
**- THE BYERS THEATRE -**  
 SANDY SPRINGS, GA - OCTOBER / NOVEMBER 2022

SCALE **3/8" = 1'**  
UNLESS OTHERWISE NOTED

PG SIZE **ARCH D**

DWG NUMBER **4** OF 6

**LIGHTING PLOT**  
 DECK & SCENIC



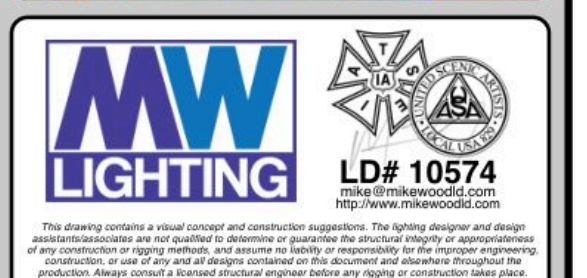
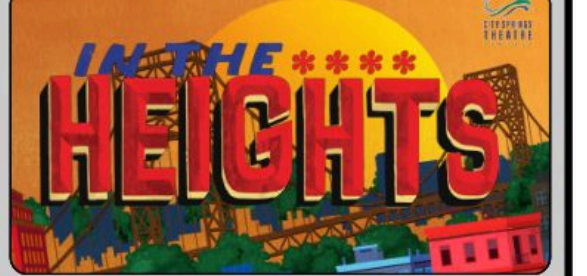
### KEY TO INSTRUMENTATION

	Robe BMFL & LightMaster Followspot Controller	3
	Martin Mac Ultra Performance	12
	Martin Mac Encore Performance CLD	7
	High End SolaSpot 1000	12
	High End SolaFrame Theatre	6
	CHAUVET R2 WASH	21
	ETC 14" 750w	4
	ETC 26" 750w	10
	ETC 36" 750w	4
	ETC S4-10" LED Lustr	4
	ETC S4-14" LED Lustr	2
	ETC S4-19" LED Lustr	16
	ETC S4-26" LED Lustr	39
	ETC S4-36" LED Lustr	22
	ETC S4-10" LED Tungsten	14
	ETC S4-19" LED Tungsten	6
	ETC S4-26" LED Tungsten	4
	ETC S4-36" LED Tungsten	1
	Ovation E260 14"	4
	Ovation E260 36"	9
	Ovation E260 36"	9
	ETC S4-PAR (MFL)	15
	ETC S4-PAR (WFL)	8
	ETC ColorSource PAR (No Lens)	32
	ETC ColorSource PAR (Med. Ovl)	2
	ETC ColorSource PAR (Wide Rnd)	4
	Chauvet Strike 4	3
	Clay Paky Stormy Strobe	2
	ETC ColorSource Linear 4	14
	Color Kinetics Colorblast 12	19

### LEGEND

ABBREVIATIONS:  
 R = Rosco  
 G = GAM  
 A = Apollo  
 LS = Line Set  
 GP = Ground Plan  
 LX = Electric  
 TD = Tech. Direct.  
 LD = Lighting Dsgnr

FOCUS COLOR  
 LENS  
 TEMPLATE  
 UNIT #  
 ENGINE TYPE  
 CHANNEL #



### REVISION HISTORY

NO.	REVISION	DATE	BY
001	SCENIC LAYOUT / DOC PREP	31 AUG 22	MYW
002	FINAL RELEASE / FROD	14 SEPT 22	MYW
003	STROBE UPDATES	14 SEPT 22	MYW
004	PROCESSED	22 SEPT 22	MYW
005	LOAD IN	11 OCT 22	MYW

### IN THE HEIGHTS

PRODUCTION STAFF  
 DIRECTOR ..... NATALIE CARUNCHO  
 LIGHTING DESIGNER ..... MIKE WOOD  
 ASSOC. PROGRAMMER ..... DALTON HAMILTON  
 ASSOC. LIGHTING DSGNR ..... ASBY MAY  
 ASST. LIGHTING DSGNR ..... MARCELLA BARBEAU  
 PROD. ELEC ..... MATTHEW PEDDIE

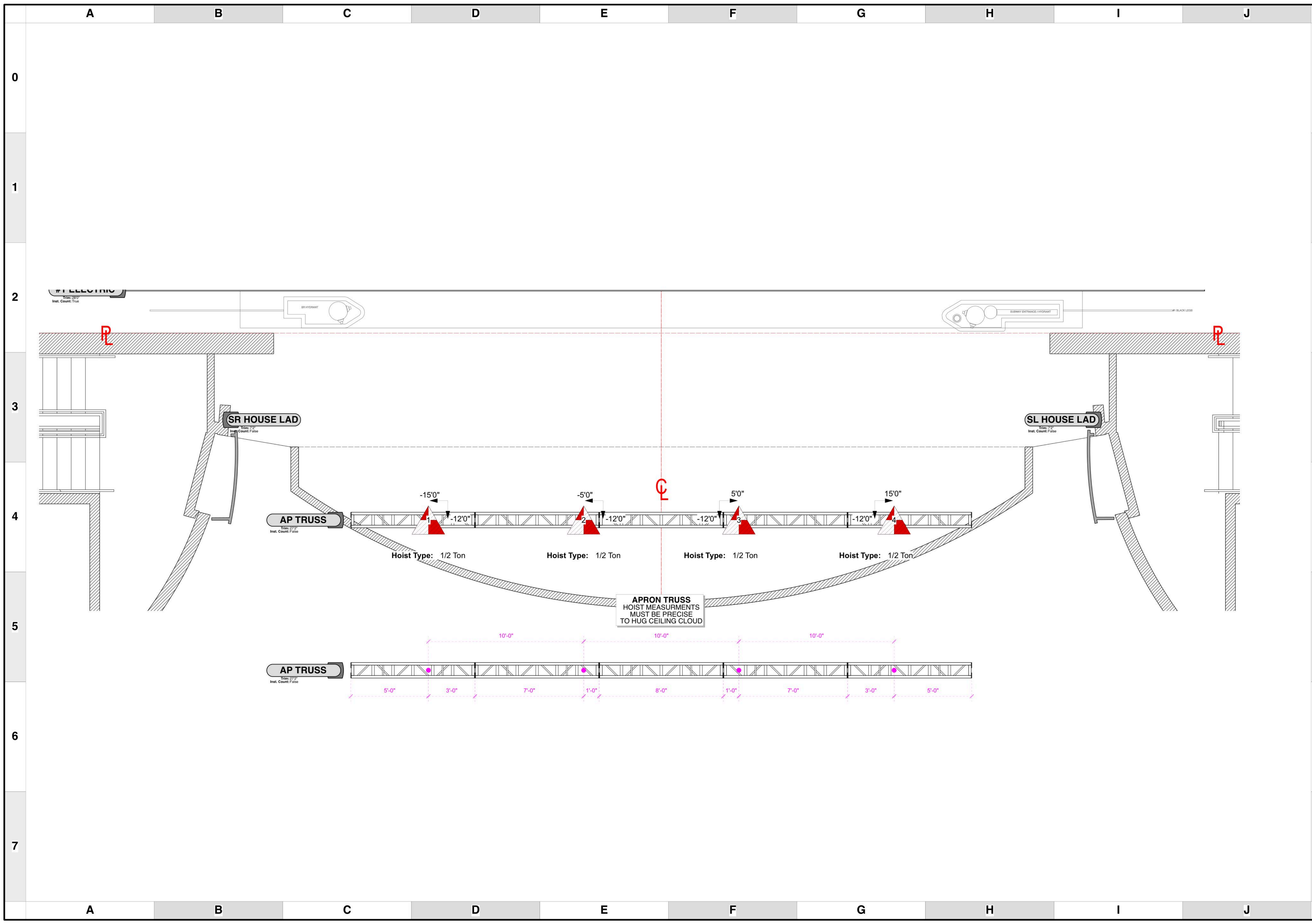
- THE BYERS THEATRE -  
 SANDY SPRINGS, GA - OCTOBER / NOVEMBER 2022

SCALE 3/8" = 1'  
 UNLESS OTHERWISE NOTED

PG SIZE ARCH D

DWG NUMBER **5** OF 6

LIGHTING PLOT  
 MOTORS PLAN



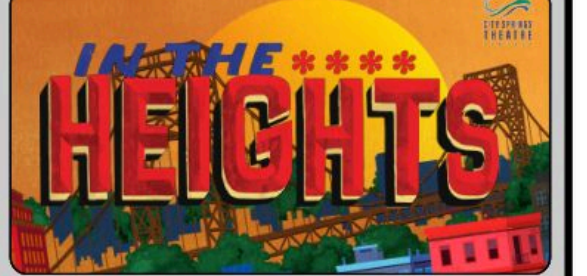
**KEY TO INSTRUMENTATION**

	Robe BMFL & LightMaster Followspot Controller	3
	Martin Mac Ultra Performance	12
	Martin Mac Encore Performance CLD	7
	High End SolaSpot 1000	12
	High End SolaFrame Theatre	6
	CHAUVET R2 WASH	21
	ETC 14" 750w	4
	ETC 26" 750w	10
	ETC 36" 750w	4
	ETC S4-10" LED Lustr	4
	ETC S4-14" LED Lustr	2
	ETC S4-19" LED Lustr	16
	ETC S4-26" LED Lustr	39
	ETC S4-36" LED Lustr	22
	ETC S4-10" LED Tungsten	14
	ETC S4-19" LED Tungsten	6
	ETC S4-26" LED Tungsten	4
	ETC S4-36" LED Tungsten	1
	Ovation E260 14"	4
	Ovation E260 36"	9
	Ovation E260 36"	9
	ETC S4-PAR (MFL)	15
	ETC S4-PAR (WFL)	8
	ETC ColorSource PAR (No Lens)	32
	ETC ColorSource PAR (Med. Ovl)	2
	ETC ColorSource PAR (Wide Rnd)	4
	Chauvet Strike 4	3
	Clay Paky Stormy Strobe	2
	ETC ColorSource Linear 4	14
	Color Kinetics Colorblast 12	19

**LEGEND**

ABBREVIATIONS:  
 R = Rosco  
 G = GAM  
 A = Apollo  
 LS = Line Set  
 GP = Ground Plan  
 LX = Electric  
 TD = Tech. Direct.  
 LD = Lighting Dsgnr

FOCUS COLOR  
 LENS  
 TEMPLATE  
 UNIT #  
 ENGINE TYPE  
 CHANNEL #



**MW LIGHTING** LD# 10574  
<http://www.mwlighting.com>

**REVISION HISTORY**

NO.	REVISION	DATE	BY
001	SCENIC LAYOUT / DOC PREP	31 AUG 22	MYW
002	FINAL RELEASE / FDS	14 SEPT 22	MYW
003	STROBE UPDATES	14 SEPT 22	MYW
004	PROCESSED	22 SEPT 22	MYW
005	LOAD IN	11 OCT 22	MYW

**IN THE HEIGHTS**

**PRODUCTION STAFF**  
 DIRECTOR ..... NATALIE CARUNCHO  
 LIGHTING DESIGNER ..... MIKE WOOD  
 ASSOC. PROGRAMMER ..... DALTON HAMILTON  
 ASSOC. LIGHTING DSGNR ..... ASBY MAY  
 ASST. LIGHTING DSGNR ..... MARCELLA BARBEAU  
 PROD. ELEC ..... MATTHEW PEDDIE

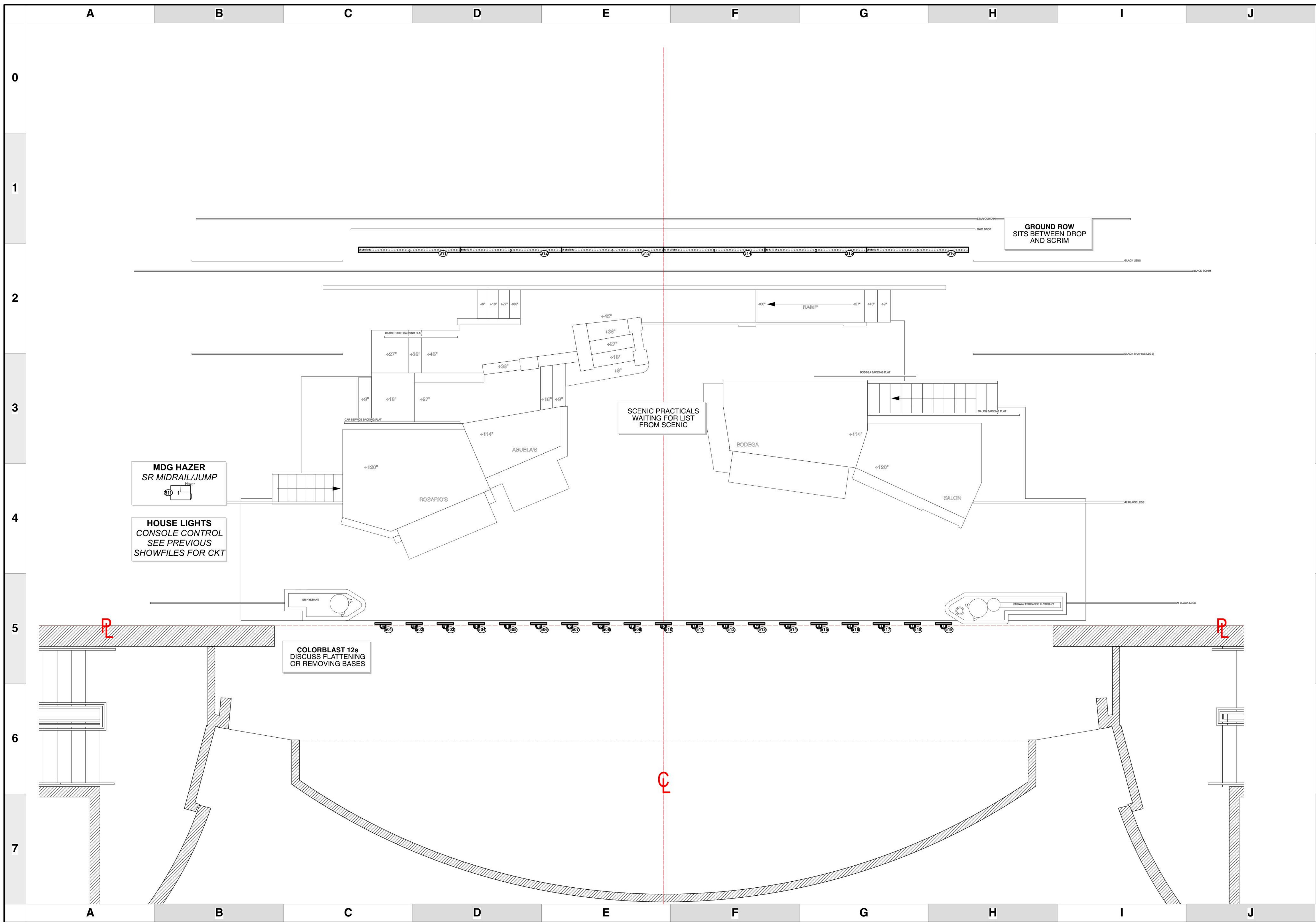
**- THE BYERS THEATRE -**  
 SANDY SPRINGS, GA - OCTOBER / NOVEMBER 2022

SCALE **3/8" = 1'**  
UNLESS OTHERWISE NOTED

PG SIZE **ARCH D**

DWG NUMBER **5**  
OF 6

**LIGHTING PLOT**  
 MOTORS PLAN



**KEY TO INSTRUMENTATION**

	Robe BMFL & LightMaster Followspot Controller	3
	Martin Mac Ultra Performance	12
	Martin Mac Encore Performance CLD	7
	High End SolaSpot 1000	12
	High End SolaFrame Theatre	6
	CHAUVET R2 WASH	21
	ETC 14" 750w	4
	ETC 26" 750w	10
	ETC 36" 750w	4
	ETC S4-10" LED Lustr	4
	ETC S4-14" LED Lustr	2
	ETC S4-19" LED Lustr	16
	ETC S4-26" LED Lustr	39
	ETC S4-36" LED Lustr	22
	ETC S4-10" LED Tungsten	14
	ETC S4-19" LED Tungsten	6
	ETC S4-26" LED Tungsten	4
	ETC S4-36" LED Tungsten	1
	Ovation E260 14"	4
	Ovation E260 36"	9
	Ovation E260 36"	9
	ETC S4-PAR (MFL)	15
	ETC S4-PAR (WFL)	8
	ETC ColorSource PAR (No Lens)	32
	ETC ColorSource PAR (Med. Ovl.)	2
	ETC ColorSource PAR (Wide Rnd)	4
	Chauvet Strike 4	3
	Clay Paky Stormy Strobe	2
	ETC ColorSource Linear 4	14
	Color Kinetics Colorblast 12	19

**LEGEND**

ABBREVIATIONS: R = Rosco, G = GAM, A = Apollo, LS = Line Set, GP = Ground Plan, LX = Electric, TD = Tech. Direct., LD = Lighting Dsgnr.

FOCUS CLR, COLOR CLR, LENS, TEMPLATE, UNIT #, ENGINE TYPE, CHANNEL #



**MW LIGHTING** LD# 10574  
 www.mwlighting.com

**REVISION HISTORY**

NO.	REVISION	DATE	BY
001	SCENIC LAYOUT / DOC PREP	31 AUG 22	MIW
002	FINAL RELEASE / FDS	14 SEPT 22	MIW
003	STRUC UPDATES	14 SEPT 22	MIW
004	PRODUCTION	22 SEPT 22	MIW
005	LOAD IN	11 OCT 22	MIW

**IN THE HEIGHTS**

**PRODUCTION STAFF**  
 DIRECTOR: NATALIE CARUNCHO  
 LIGHTING DESIGNER: MIKE WOOD  
 ASSOC. PROGRAMMER: DALTON HAMILTON  
 ASSOC. LIGHTING DSGNR: ASBY MAY  
 ASST. LIGHTING DSGNR: MARCELLA BARBEAU  
 PROD. ELEC: MATTHEW PEDDIE

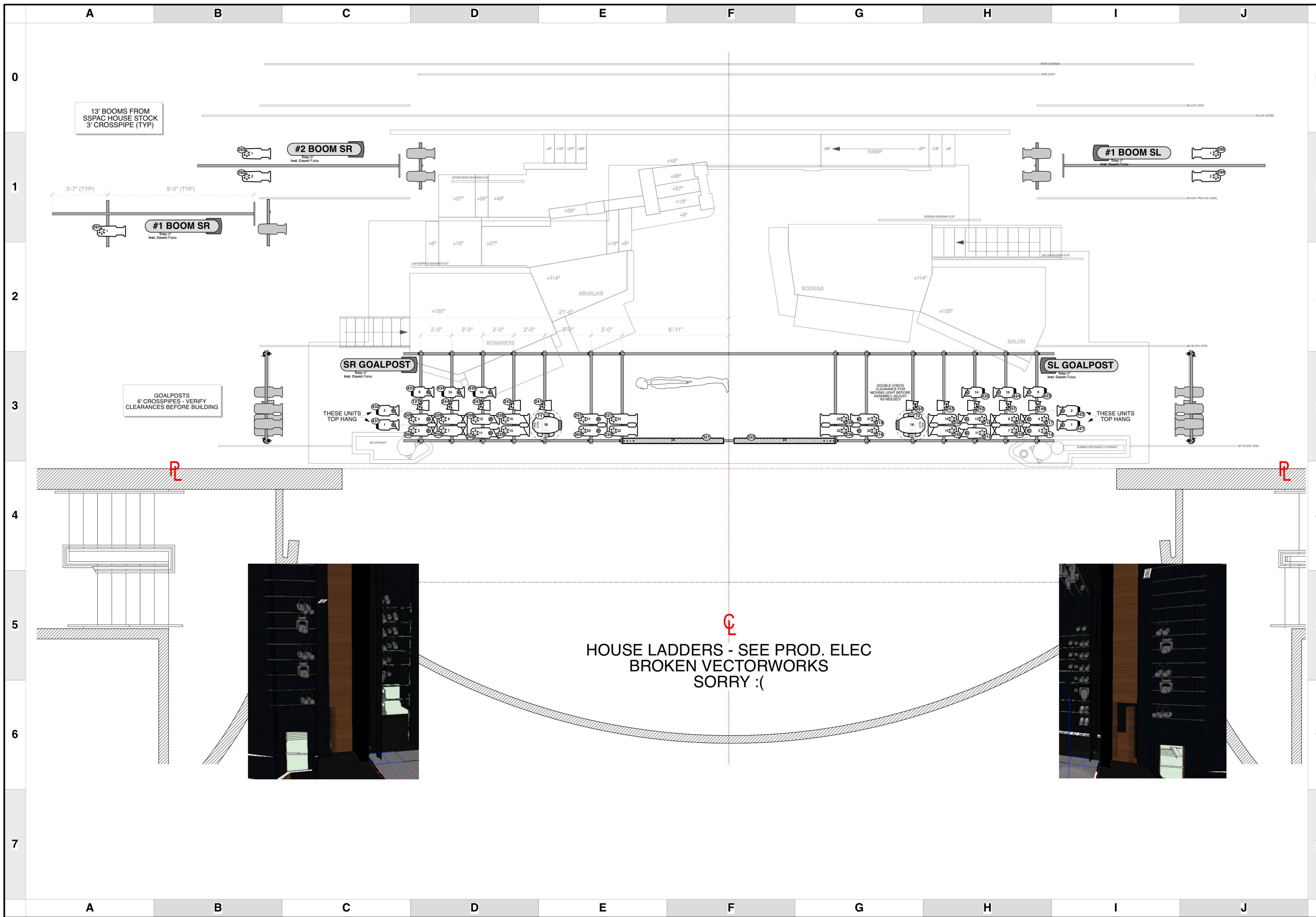
**- THE BYERS THEATRE -**  
 SANDY SPRINGS, GA - OCTOBER / NOVEMBER 2022

SCALE **3/8" = 1'**  
UNLESS OTHERWISE NOTED

PG SIZE **ARCH D**

DWG NUMBER **4** OF 6

**LIGHTING PLOT**  
 DECK & SCENIC



**KEY TO INSTRUMENTATION**

	Robe BMFL & LightMaster Followspot Controller	3
	Martin Mac Ultra Performance	12
	Martin Mac Encore Performance CLD	7
	High End SolaSpot 1000	12
	High End SolaFrame Theatre	6
	CHAUVET R2 WASH	21
	ETC 14\"/>	4
	ETC 26\"/>	10
	ETC 36\"/>	4
	ETC S4-10\"/>	4
	ETC S4-14\"/>	2
	ETC S4-19\"/>	16
	ETC S4-26\"/>	39
	ETC S4-36\"/>	22
	ETC S4-10\"/>	14
	ETC S4-19\"/>	6
	ETC S4-26\"/>	4
	ETC S4-36\"/>	1
	Ovation E260 14\"/>	4
	Ovation E260 36\"/>	9
	Ovation E260 36\"/>	9
	ETC S4-PAR (MFL)	15
	ETC S4-PAR (WFL)	8
	ETC ColorSource PAR (No Lens)	32
	ETC ColorSource PAR (Med. Ovl)	2
	ETC ColorSource PAR (Wide Rnd)	4
	Chauvet Strike 4	3
	Clay Paky Stormy Strobe	2
	ETC ColorSource Linear 4	14
	Color Kinetics Colorblast 12	19

**LEGEND**

ABBREVIATIONS: R = Rosco, G = GAM, A = Apollo, LS = Line Set, GP = Ground Plan, TD = Tech. Direct., LD = Lighting Dsgnr.

FOCUS COLOR: FOC CLR

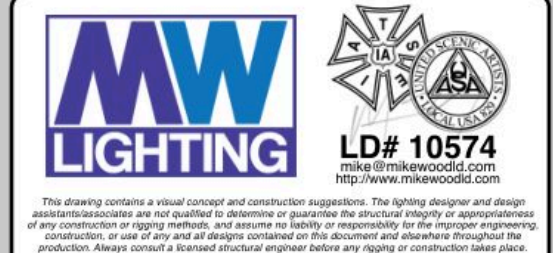
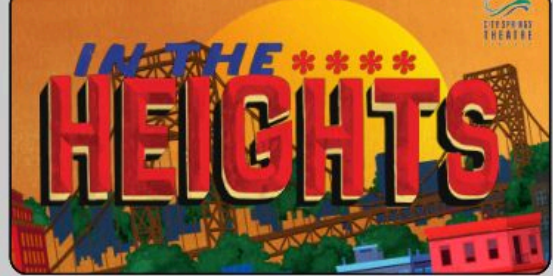
LENS: LENS

TEMPLATE: TEMPLATE

UNIT #: UNIT #

ENGINE TYPE: ENGINE TYPE

CHANNEL #: CHANNEL #



**REVISION HISTORY**

NO.	REVISION	DATE	BY
001	SCENE LAYOUT / DOC PREP	31 AUG 22	MIW
002	FINAL RELEASE / FISC	14 SEPT 22	MIW
003	STROBE UPDATES	14 SEPT 22	MIW
004	PROCESSES	22 SEPT 22	MIW
005	LOAD IN	11 OCT 22	MIW

**IN THE HEIGHTS**

**PRODUCTION STAFF**

DIRECTOR: NATALIE CARUNCHO  
 LIGHTING DESIGNER: MIKE WOOD  
 ASSOC. PROGRAMMER: DALTON HAMILTON  
 ASSOC. LIGHTING DSGNR: ASBY MAY  
 ASST. LIGHTING DSGNR: MARCELLA BARBEAU  
 PROD. ELEC: MATTHEW PEDDIE

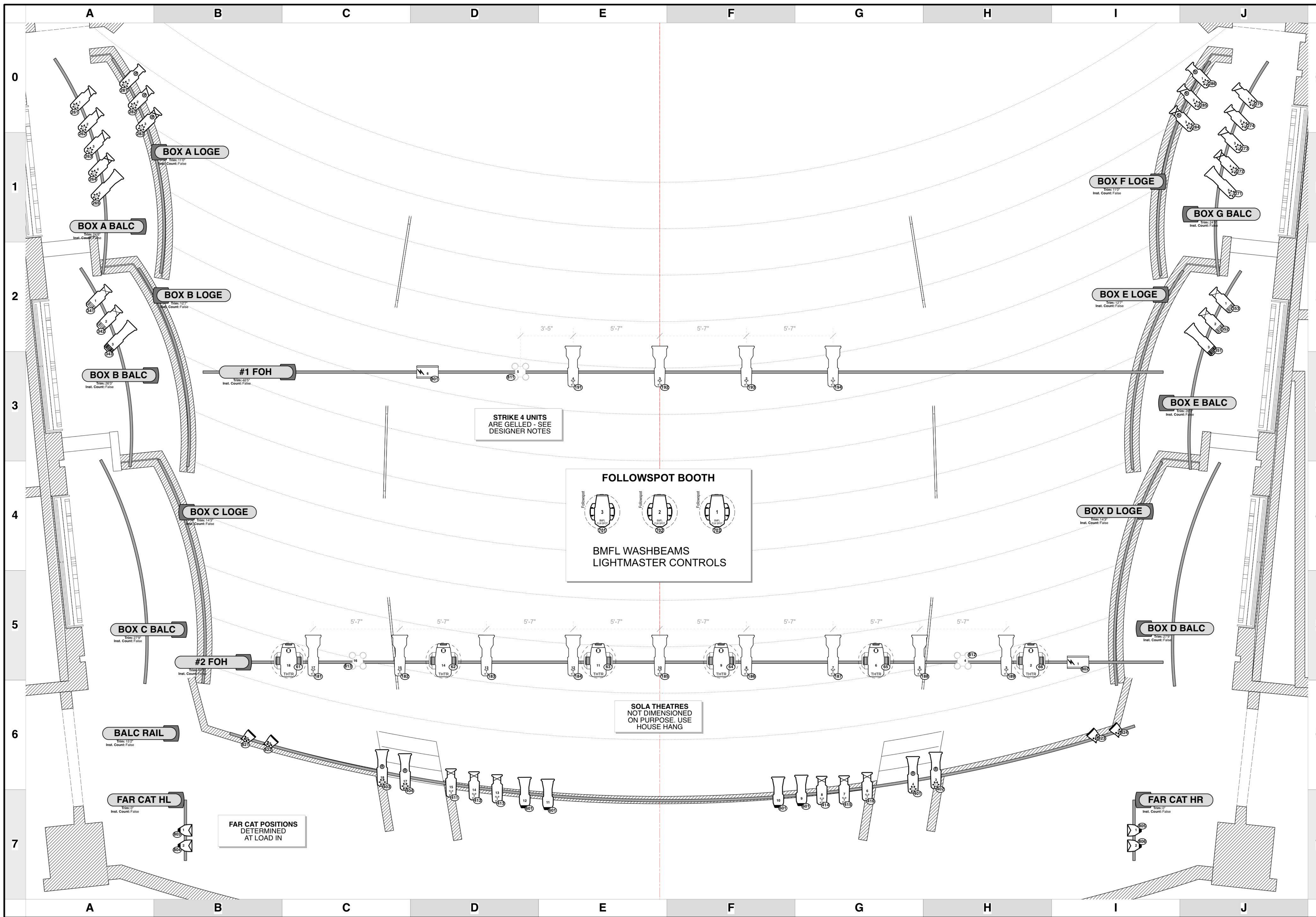
**- THE BYERS THEATRE -**  
 SANDY SPRINGS, GA - OCTOBER / NOVEMBER 2022

SCALE **3/8" = 1'**  
UNLESS OTHERWISE NOTED

PG SIZE **ARCH D**

DWG NUMBER **3**  
OF 6

**LIGHTING PLOT**  
 SIDE POSITIONS



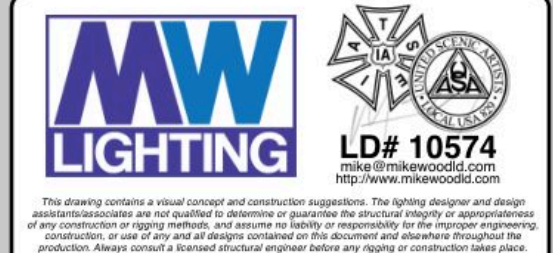
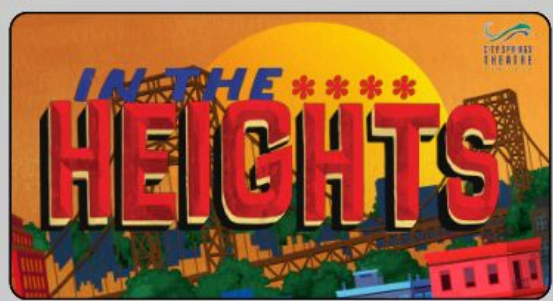
**KEY TO INSTRUMENTATION**

	Robe BMFL & LightMaster Followspot Controller	3
	Martin Mac Ultra Performance	12
	Martin Mac Encore Performance CLD	7
	High End SolaSpot 1000	12
	High End SolaFrame Theatre	6
	CHAUVET R2 WASH	21
	ETC 14" 750w	4
	ETC 26" 750w	10
	ETC 36" 750w	4
	ETC S4-10" LED Lustr	4
	ETC S4-14" LED Lustr	2
	ETC S4-19" LED Lustr	16
	ETC S4-26" LED Lustr	39
	ETC S4-36" LED Lustr	22
	ETC S4-10" LED Tungsten	14
	ETC S4-19" LED Tungsten	6
	ETC S4-26" LED Tungsten	4
	ETC S4-36" LED Tungsten	1
	Ovation E260 14"	4
	Ovation E260 36"	9
	Ovation E260 36"	9
	ETC S4-PAR (MFL)	15
	ETC S4-PAR (WFL)	8
	ETC ColorSource PAR (No Lens)	32
	ETC ColorSource PAR (Med. Ovl)	2
	ETC ColorSource PAR (Wide Rnd)	4
	Chauvet Strike 4	3
	Clay Paky Stormy Strobe	2
	ETC ColorSource Linear 4	14
	Color Kinetics Colorblast 12	19

**LEGEND**

ABBREVIATIONS: FOCUS CLR, COLOR CLR, R = Rosco, G = GAM, A = Apollo, LS = Line Set, GP = Ground Plan, TD = Tech. Direct., LD = Lighting Dsgnr

LENS: TEMPLATE, UNIT #, ENGINE TYPE, CHANNEL #



**REVISION HISTORY**

NO	REVISION	DATE	BY
001	SCENIC LAYOUT / DOC PREP	31 AUG 22	MYW
002	FINAL RELEASE / FROD	14 SEPT 22	MYW
003	STROBE UPDATES	14 SEPT 22	MYW
004	PRODUCTION	22 SEPT 22	MYW
005	LOAD IN	11 OCT 22	MYW

**IN THE HEIGHTS**

**PRODUCTION STAFF**  
 DIRECTOR: NATALIE CARUNCHO  
 LIGHTING DESIGNER: MIKE WOOD  
 ASSOC. PROGRAMMER: DALTON HAMILTON  
 ASSOC. LIGHTING DESIGNER: ASBY MAY  
 ASST. LIGHTING DESIGNER: MARCELLA BARBEAU  
 PROD. ELEC: MATTHEW PEDDIE

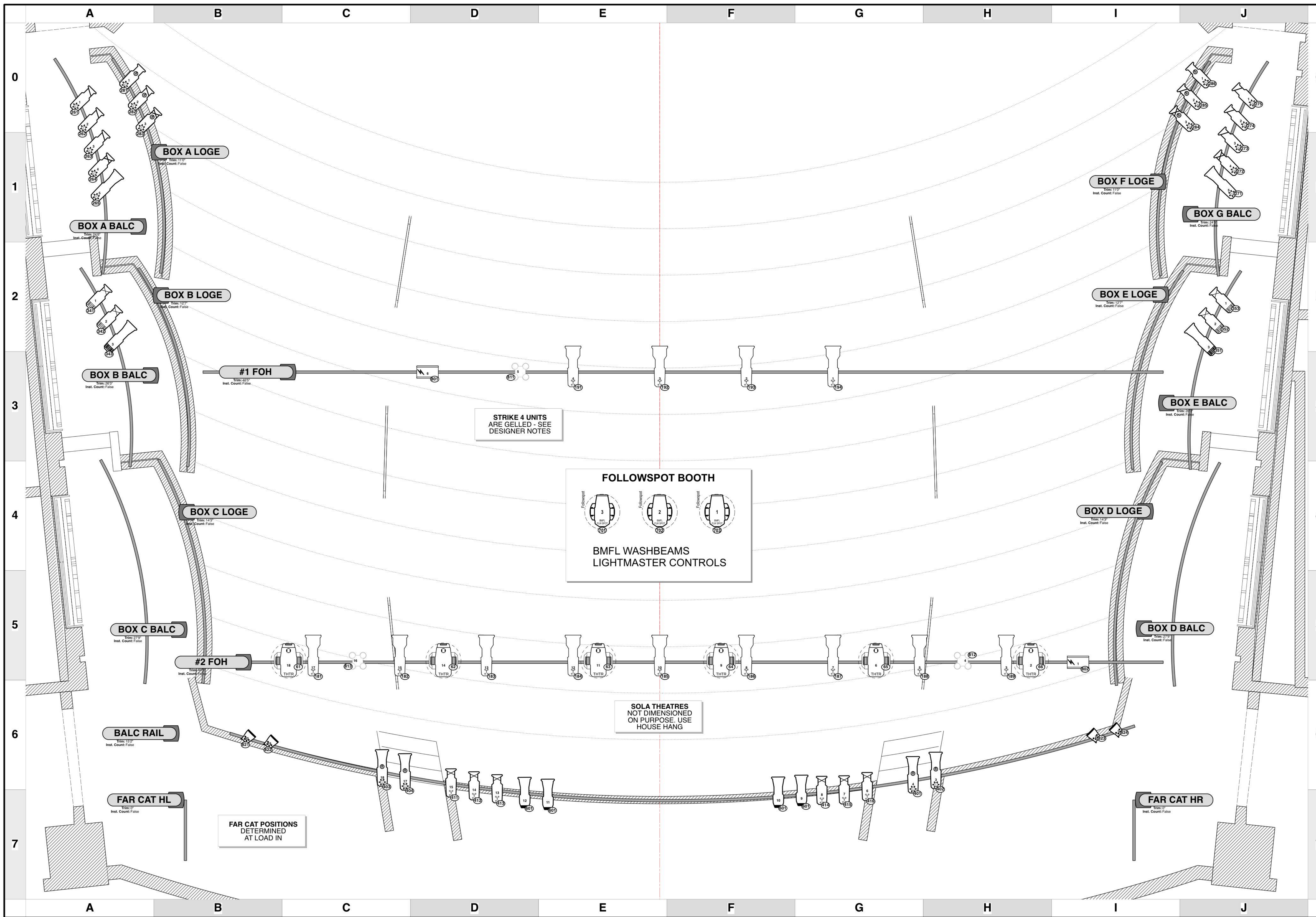
**- THE BYERS THEATRE -**  
 SANDY SPRINGS, GA - OCTOBER / NOVEMBER 2022

SCALE 3/8" = 1'  
 UNLESS OTHERWISE NOTED

PG SIZE ARCH D

DWG NUMBER **2**

**LIGHTING PLOT**  
 FRONT OF HOUSE



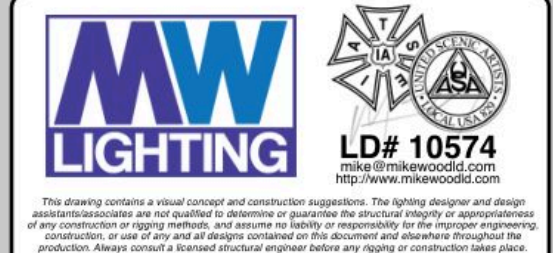
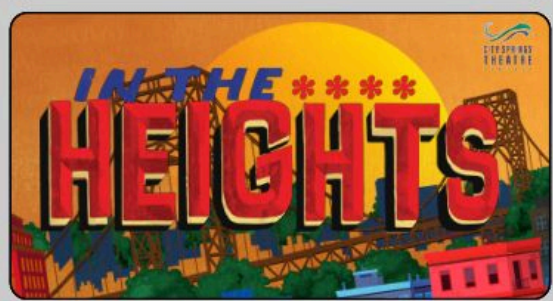
**KEY TO INSTRUMENTATION**

	Robe BMFL & LightMaster Followspot Controller	3
	Martin Mac Ultra Performance	12
	Martin Mac Encore Performance CLD	7
	High End SolaSpot 1000	12
	High End SolaFrame Theatre	6
	CHAUVET R2 WASH	21
	ETC 14" 750w	4
	ETC 26" 750w	10
	ETC 36" 750w	4
	ETC S4-10" LED Lustr	4
	ETC S4-14" LED Lustr	2
	ETC S4-19" LED Lustr	16
	ETC S4-26" LED Lustr	39
	ETC S4-36" LED Lustr	22
	ETC S4-10" LED Tungsten	14
	ETC S4-19" LED Tungsten	6
	ETC S4-26" LED Tungsten	4
	ETC S4-36" LED Tungsten	1
	Ovation E260 14"	4
	Ovation E260 36"	9
	Ovation E260 36"	9
	ETC S4-PAR (MFL)	15
	ETC S4-PAR (WFL)	8
	ETC ColorSource PAR (No Lens)	32
	ETC ColorSource PAR (Med. Ovl.)	2
	ETC ColorSource PAR (Wide Rnd)	4
	Chauvet Strike 4	3
	Clay Paky Stormy Strobe	2
	ETC ColorSource Linear 4	14
	Color Kinetics Colorblast 12	19

**LEGEND**

ABBREVIATIONS: FOCUS, COLOR, FOC, CLR  
 R = Rosco  
 G = GAM  
 A = Apollo  
 LS = Line Set  
 GP = Ground Plan  
 LX = Electric  
 TD = Tech. Direct.  
 LD = Lighting Dsgnr

LENS', TEMPLATE, UNIT #, ENGINE TYPE, CHANNEL #



**REVISION HISTORY**

NO.	REVISION	DATE	BY
001	SCENIC LAYOUT / DOC PREP	31 AUG 22	MYW
002	FINAL RELEASE / FROD	14 SEPT 22	MYW
003	STROBE UPDATES	14 SEPT 22	MYW
004	PROCESSED	22 SEPT 22	MYW
005	LOAD IN	11 OCT 22	MYW

**IN THE HEIGHTS**

**PRODUCTION STAFF**

DIRECTOR: NATALIE CARUNCHO  
 LIGHTING DESIGNER: MIKE WOOD  
 ASSOC. PROGRAMMER: DALTON HAMILTON  
 ASSOC. LIGHTING DESIGNER: ASBY MAY  
 ASST. LIGHTING DESIGNER: MARCELLA BARBEAU  
 PROD. ELEC: MATTHEW PEDDIE

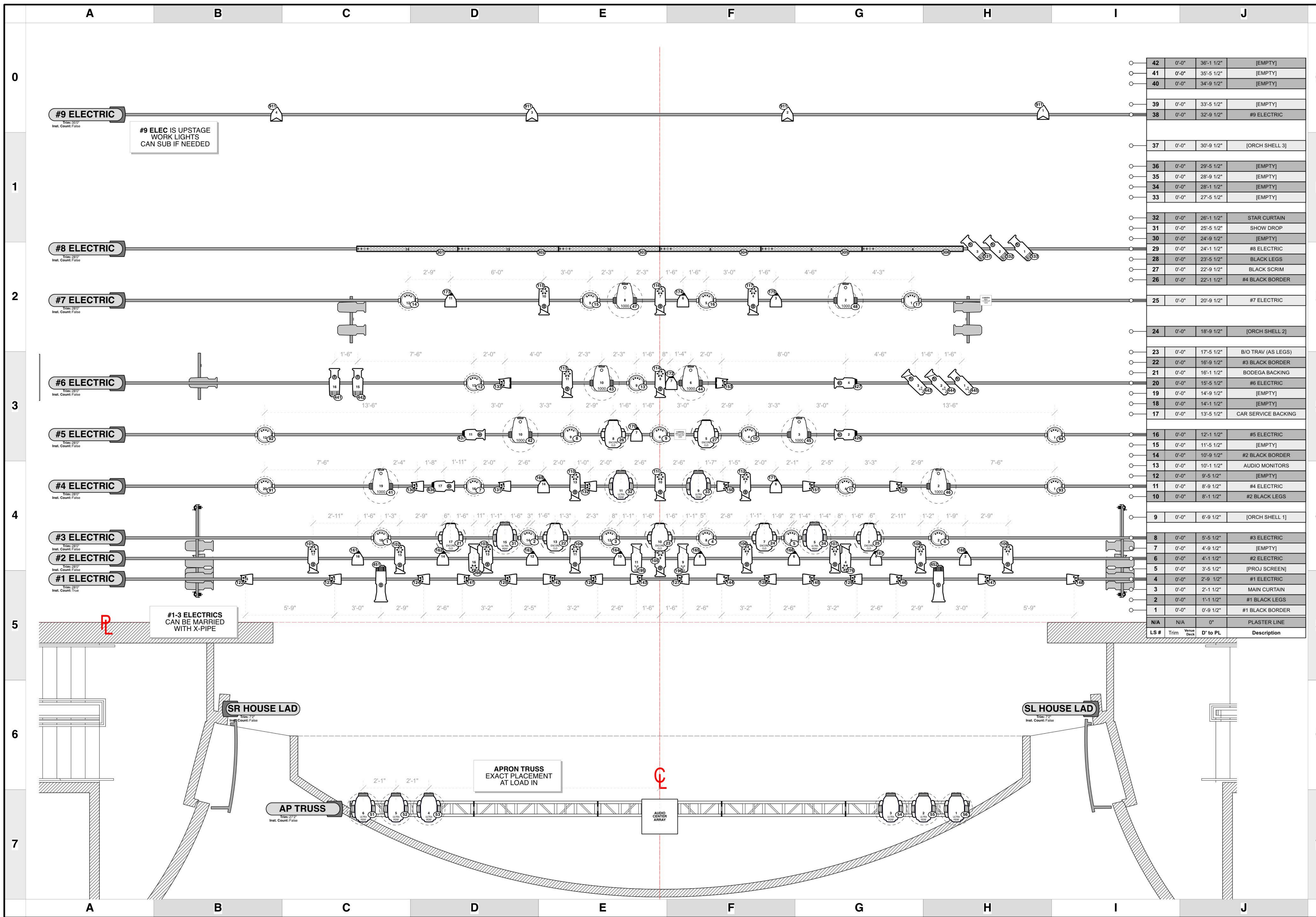
**- THE BYERS THEATRE -**  
 SANDY SPRINGS, GA - OCTOBER / NOVEMBER 2022

SCALE 3/8" = 1'  
 UNLESS OTHERWISE NOTED

PG SIZE ARCH D

DWG NUMBER **2**

**LIGHTING PLOT**  
 FRONT OF HOUSE



LS #	Trim	Vertex Deck	D' to PL	Description
42	0'-0"	36'-1 1/2"		[EMPTY]
41	0'-0"	35'-5 1/2"		[EMPTY]
40	0'-0"	34'-9 1/2"		[EMPTY]
39	0'-0"	33'-5 1/2"		[EMPTY]
38	0'-0"	32'-9 1/2"		#9 ELECTRIC
37	0'-0"	30'-9 1/2"		[ORCH SHELL 3]
36	0'-0"	29'-5 1/2"		[EMPTY]
35	0'-0"	28'-9 1/2"		[EMPTY]
34	0'-0"	28'-1 1/2"		[EMPTY]
33	0'-0"	27'-5 1/2"		[EMPTY]
32	0'-0"	26'-1 1/2"		STAR CURTAIN
31	0'-0"	25'-5 1/2"		SHOW DROP
30	0'-0"	24'-9 1/2"		[EMPTY]
29	0'-0"	24'-1 1/2"		#8 ELECTRIC
28	0'-0"	23'-5 1/2"		BLACK LEGS
27	0'-0"	22'-9 1/2"		BLACK SCRIM
26	0'-0"	22'-1 1/2"		#4 BLACK BORDER
25	0'-0"	20'-9 1/2"		#7 ELECTRIC
24	0'-0"	18'-9 1/2"		[ORCH SHELL 2]
23	0'-0"	17'-5 1/2"		B/O TRAV (AS LEGS)
22	0'-0"	16'-9 1/2"		#3 BLACK BORDER
21	0'-0"	16'-1 1/2"		BODEGA BACKING
20	0'-0"	15'-5 1/2"		#6 ELECTRIC
19	0'-0"	14'-9 1/2"		[EMPTY]
18	0'-0"	14'-1 1/2"		[EMPTY]
17	0'-0"	13'-5 1/2"		CAR SERVICE BACKING
16	0'-0"	12'-1 1/2"		#5 ELECTRIC
15	0'-0"	11'-5 1/2"		[EMPTY]
14	0'-0"	10'-9 1/2"		#2 BLACK BORDER
13	0'-0"	10'-1 1/2"		AUDIO MONITORS
12	0'-0"	9'-5 1/2"		[EMPTY]
11	0'-0"	8'-9 1/2"		#4 ELECTRIC
10	0'-0"	8'-1 1/2"		#2 BLACK LEGS
9	0'-0"	6'-9 1/2"		[ORCH SHELL 1]
8	0'-0"	5'-5 1/2"		#3 ELECTRIC
7	0'-0"	4'-9 1/2"		[EMPTY]
6	0'-0"	4'-1 1/2"		#2 ELECTRIC
5	0'-0"	3'-5 1/2"		[PROJ SCREEN]
4	0'-0"	2'-9 1/2"		#1 ELECTRIC
3	0'-0"	2'-1 1/2"		MAIN CURTAIN
2	0'-0"	1'-1 1/2"		#1 BLACK LEGS
1	0'-0"	0'-9 1/2"		#1 BLACK BORDER
N/A	N/A	0"		PLASTER LINE

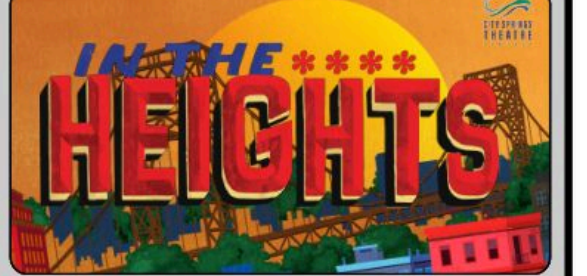
### KEY TO INSTRUMENTATION

	Robe BMFL & LightMaster Followspot Controller	3
	Martin Mac Ultra Performance	12
	Martin Mac Encore Performance CLD	7
	High End SolaSpot 1000	12
	High End SolaFrame Theatre	6
	CHAUVET R2 WASH	21
	ETC 14" 750w	4
	ETC 26" 750w	10
	ETC 36" 750w	4
	ETC S4-10" LED Lustr	4
	ETC S4-14" LED Lustr	2
	ETC S4-19" LED Lustr	16
	ETC S4-26" LED Lustr	39
	ETC S4-36" LED Lustr	22
	ETC S4-10" LED Tungsten	14
	ETC S4-19" LED Tungsten	6
	ETC S4-26" LED Tungsten	4
	ETC S4-36" LED Tungsten	1
	Ovation E260 14"	4
	Ovation E260 36"	9
	ETC S4-PAR (MFL)	15
	ETC S4-PAR (WFL)	8
	ETC ColorSource PAR (No Lens)	32
	ETC ColorSource PAR (Med. Ovl)	2
	ETC ColorSource PAR (Wide Rnd)	4
	Chauvet Strike 4	3
	Clay Paky Stormy Strobe	2
	ETC ColorSource Linear 4	14
	Color Kinetics Colorblast 12	19

### LEGEND

ABBREVIATIONS:  
 R = Rosco  
 G = GAM  
 A = Apollo  
 LS = Line Set  
 GP = Ground Plan  
 LX = Electric  
 TD = Tech. Direct.  
 LD = Lighting Dsgnr

FOCUS COLOR  
 CLR  
 LENS  
 TEMPLATE  
 UNIT #  
 ENGINE TYPE  
 CHANNEL #



**MW LIGHTING** LD# 10574  
 www.mwlighting.com

### REVISION HISTORY

NO	REVISION	DATE	BY
001	SCHEMATIC / DOC PREP	31 AUG 22	MW
002	INITIAL RELEASE / EDC	14 SEPT 22	MW
003	STROKE UPDATES	14 SEPT 22	MW
004	PROCESSED	22 SEPT 22	MW
005	LOAD IN	11 OCT 22	MW

### IN THE HEIGHTS

PRODUCTION STAFF  
 DIRECTOR: NATALIE CARUNCHO  
 LIGHTING DESIGNER: MIKE WOOD  
 ASSOC. PROGRAMMER: DALTON HAMILTON  
 ASSOC. LIGHTING DSGNR: ASBY MAY  
 ASST. LIGHTING DSGNR: MARCELLA BARBEAU  
 PROD. ELEC: MATTHEW PEDDIE

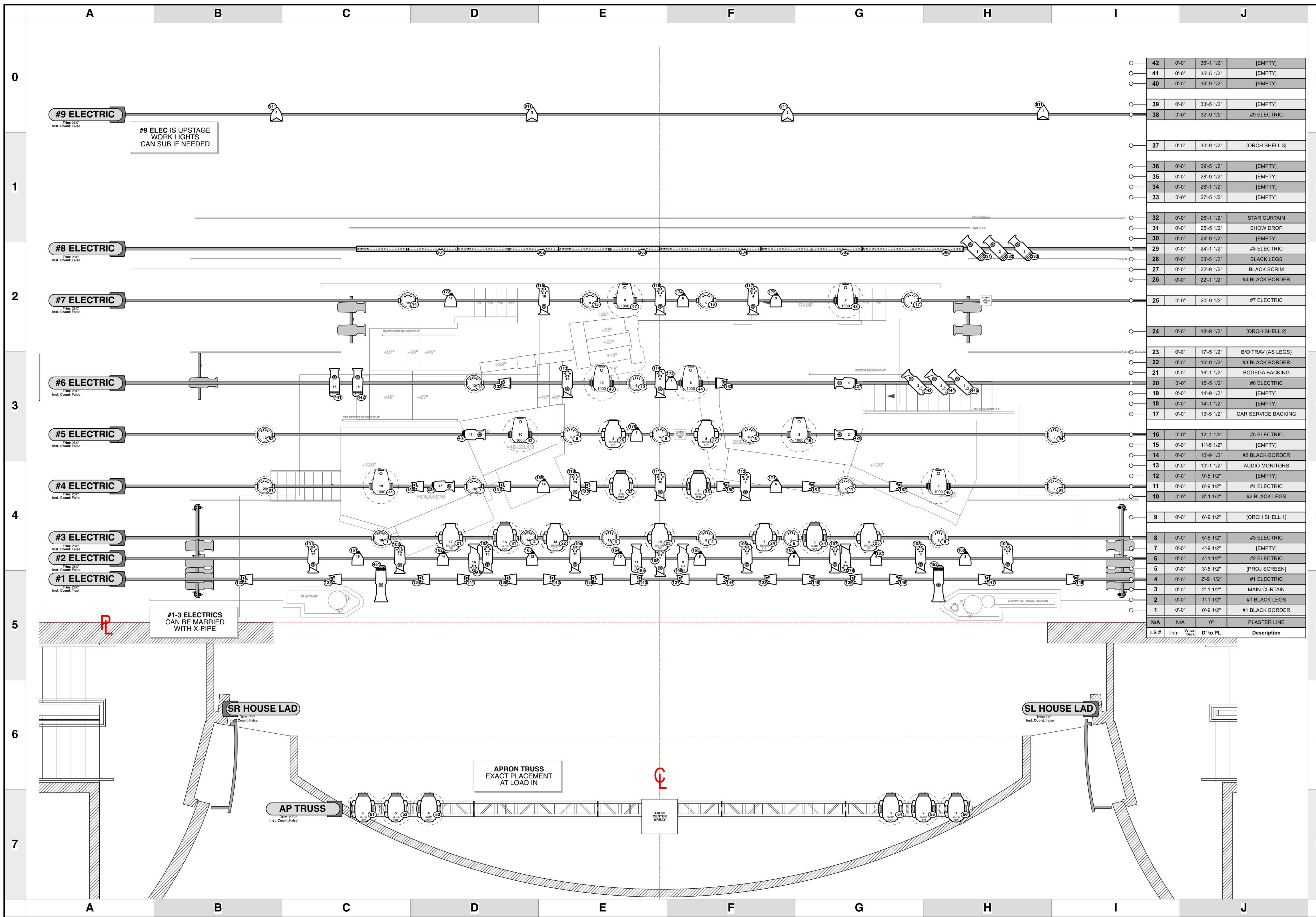
**THE BYERS THEATRE**  
 SANDY SPRINGS, GA - OCTOBER / NOVEMBER 2022

SCALE 3/8" = 1'  
 UNLESS OTHERWISE NOTED

PG SIZE ARCH D

DWG NUMBER **1** OF 6

**LIGHTING PLOT**  
 OVERTAGE HANG



LS #	Trim	Vendor Deck	D' to PL	Description
42	0'-0"	36'-1 1/2"		[EMPTY]
41	0'-0"	35'-5 1/2"		[EMPTY]
40	0'-0"	34'-9 1/2"		[EMPTY]
39	0'-0"	33'-5 1/2"		[EMPTY]
38	0'-0"	32'-9 1/2"		#9 ELECTRIC
37	0'-0"	30'-9 1/2"		[ORCH SHELL 3]
36	0'-0"	29'-5 1/2"		[EMPTY]
35	0'-0"	28'-9 1/2"		[EMPTY]
34	0'-0"	28'-1 1/2"		[EMPTY]
33	0'-0"	27'-5 1/2"		[EMPTY]
32	0'-0"	26'-1 1/2"		STAR CURTAIN
31	0'-0"	25'-5 1/2"		SHOW DROP
30	0'-0"	24'-9 1/2"		[EMPTY]
29	0'-0"	24'-1 1/2"		#8 ELECTRIC
28	0'-0"	23'-5 1/2"		BLACK LEGS
27	0'-0"	22'-9 1/2"		BLACK SCRIM
26	0'-0"	22'-1 1/2"		#4 BLACK BORDER
25	0'-0"	20'-9 1/2"		#7 ELECTRIC
24	0'-0"	18'-9 1/2"		[ORCH SHELL 2]
23	0'-0"	17'-5 1/2"		B/O TRAV (AS LEGS)
22	0'-0"	16'-9 1/2"		#3 BLACK BORDER
21	0'-0"	16'-1 1/2"		BODEGA BACKING
20	0'-0"	15'-5 1/2"		#6 ELECTRIC
19	0'-0"	14'-9 1/2"		[EMPTY]
18	0'-0"	14'-1 1/2"		[EMPTY]
17	0'-0"	13'-5 1/2"		CAR SERVICE BACKING
16	0'-0"	12'-1 1/2"		#5 ELECTRIC
15	0'-0"	11'-5 1/2"		[EMPTY]
14	0'-0"	10'-9 1/2"		#2 BLACK BORDER
13	0'-0"	10'-1 1/2"		AUDIO MONITORS
12	0'-0"	9'-5 1/2"		[EMPTY]
11	0'-0"	8'-9 1/2"		#4 ELECTRIC
10	0'-0"	8'-1 1/2"		#2 BLACK LEGS
9	0'-0"	6'-9 1/2"		[ORCH SHELL 1]
8	0'-0"	5'-5 1/2"		#3 ELECTRIC
7	0'-0"	4'-9 1/2"		[EMPTY]
6	0'-0"	4'-1 1/2"		#2 ELECTRIC
5	0'-0"	3'-5 1/2"		[PROJ SCREEN]
4	0'-0"	2'-9 1/2"		#1 ELECTRIC
3	0'-0"	2'-1 1/2"		MAIN CURTAIN
2	0'-0"	1'-1 1/2"		#1 BLACK LEGS
1	0'-0"	0'-9 1/2"		#1 BLACK BORDER
N/A	N/A	0"		PLASTER LINE

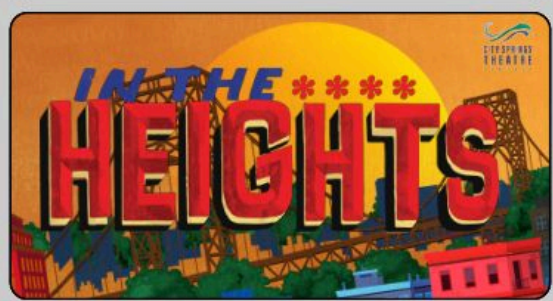
### KEY TO INSTRUMENTATION

	Robe BMFL & LightMaster Followspot Controller	3
	Martin Mac Ultra Performance	12
	Martin Mac Encore Performance CLD	7
	High End SolaSpot 1000	12
	High End SolaFrame Theatre	6
	CHAUVET R2 WASH	21
	ETC 14" 750w	4
	ETC 26" 750w	10
	ETC 36" 750w	4
	ETC S4-10" LED Lustr	4
	ETC S4-14" LED Lustr	2
	ETC S4-19" LED Lustr	16
	ETC S4-26" LED Lustr	38
	ETC S4-36" LED Lustr	22
	ETC S4-10" LED Tungsten	14
	ETC S4-19" LED Tungsten	6
	ETC S4-26" LED Tungsten	4
	ETC S4-36" LED Tungsten	1
	Ovation E260 14"	4
	Ovation E260 36"	9
	ETC S4-PAR (MFL)	15
	ETC S4-PAR (WFL)	8
	ETC ColorSource PAR (No Lens)	32
	ETC ColorSource PAR (Med. Ovl)	2
	ETC ColorSource PAR (Wide Rnd)	4
	Chauvet Strike 4	3
	Clay Paky Stormy Strobe	2
	ETC ColorSource Linear 4	14
	Color Kinetics Colorblast 12	19

### LEGEND

ABBREVIATIONS: R = Rosco, G = GAM, A = Apollo, LS = Line Set, GP = Ground Plan, LX = Electric, TD = Tech. Direct, LD = Lighting Dsgnr

FOCUS COLOR, LENS, TEMPLATE, UNIT #, ENGINE TYPE, CHANNEL #



**MW LIGHTING** LD# 10574  
 800.888.8888  
 www.mwlighting.com

### REVISION HISTORY

NO	REVISION	DATE	BY
001	SCENE LAYOUT / DOC PREP	31 AUG 22	MWY
002	FINAL RELEASE / FDS	14 SEPT 22	MWY
003	STRIKE UPDATES	14 SEPT 22	MWY
004	PRODUCTION	22 SEPT 22	MWY
005	LOAD IN	11 OCT 22	MWY

### IN THE HEIGHTS

PRODUCTION STAFF  
 DIRECTOR: NATALIE CARUNCHO  
 LIGHTING DESIGNER: MIKE WOOD  
 ASSOC. PROGRAMMER: DALTON HAMILTON  
 ASSOC. LIGHTING DSGNR: ASBY MAY  
 ASST. LIGHTING DSGNR: MARCELLA BARBEAU  
 PROD. ELEC: MATTHEW PEDDIE

**THE BYERS THEATRE**  
 SANDY SPRINGS, GA - OCTOBER / NOVEMBER 2022

SCALE 3/8" = 1'  
 UNLESS OTHERWISE NOTED

PG SIZE ARCH D

DWG NUMBER **1** OF 6

**LIGHTING PLOT**  
 OVERTAGE HANG