

KEY TO INSTRUMENTATION

	Chauvet Rogue R2X Spot	3
	Chauvet Rogue R1 Wash	8
	36° Prolights Eclipse	12
	50° Prolights Eclipse	12
	Colordash Par	8
	Elation SixPar	8
	ETC Vivid 11	5
	S4 Junior 36°	22
	S4 PARNel	4
	Colorforce II 72	5
	ChromaQ Scroller	10
	RGB Various	See Dwg

LEGEND

ABBREVIATIONS:
 R = Rocco
 G = GAM
 A = Apollo
 LS = Line Set
 GP = Ground Plan
 LX = Electric
 TD = Tech. Direct.
 LD = Lighting Diagram

FOCUS
 FOC CLR

LENS
 LENS

TEMPLATE
 TEMPLATE

UNIT #
 UNIT #

ENGINE TYPE
 ENGINE TYPE

CHANNEL #
 CHANNEL #



MW LIGHTING LD# 10574
 www.mwlighting.com

REVISION HISTORY

NO.	REVISION	DATE	BY

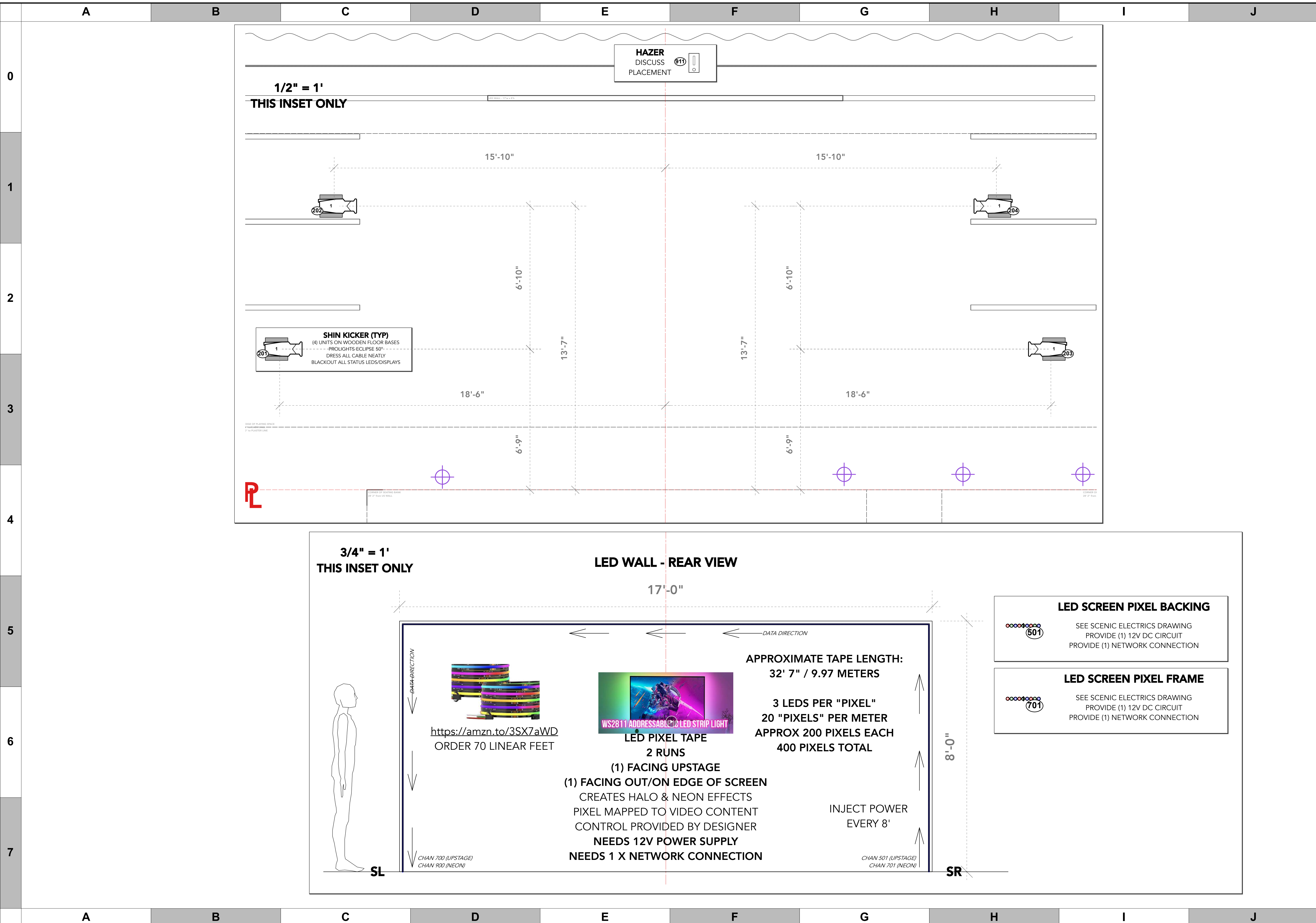
THE HOUSE OF FUTURE MEMORY

PRODUCTION STAFF
 DIRECTOR: ERIC DAVIS
 LIGHTING DESIGNER: MIKE WOOD
 SCENIC DESIGNER: ERIC DAVIS
 PRODUCTION ELEC: TRENTEN SZABO

freeFall theatre company
 2023 - St. Petersburg, FL

SCALE 1/2" = 1'
 PG SIZE ARCH D
 DWG NUMBER **L01** OF 5

LIGHT PLOT - OVERHEAD
 OVERSTAGE HANG



KEY TO INSTRUMENTATION

	Chauvet Rogue R2X Spot	3
	Chauvet Rogue R1 Wash	8
	36° Prolights Eclipse	12
	50° Prolights Eclipse	12
	Colordash Par	8
	Elation SixPar	8
	ETC Vivid 11	5
	S4 Junior 36°	22
	S4 PARNel	4
	Colorforce II 72	5
	ChromaQ Scroller	10
	RGB Various	See Dwg

LEGEND

ABBREVIATIONS: R = Focus, G = GAM, A = Apollo, LS = Line Set, GP = Ground Plan, EA = Electric, TD = Tech. Direct, LD = Lighting Dwg.

FOCUS: CLR

LENS: CLR

TEMPLATE: CLR

UNIT #: 5

ENGINE TYPE: CLR

CHANNEL #: CLR



MW LIGHTING LD# 10574

www.mwlighting.com

REVISION HISTORY

NO.	REVISION	DATE	BY

THE HOUSE OF FUTURE MEMORY

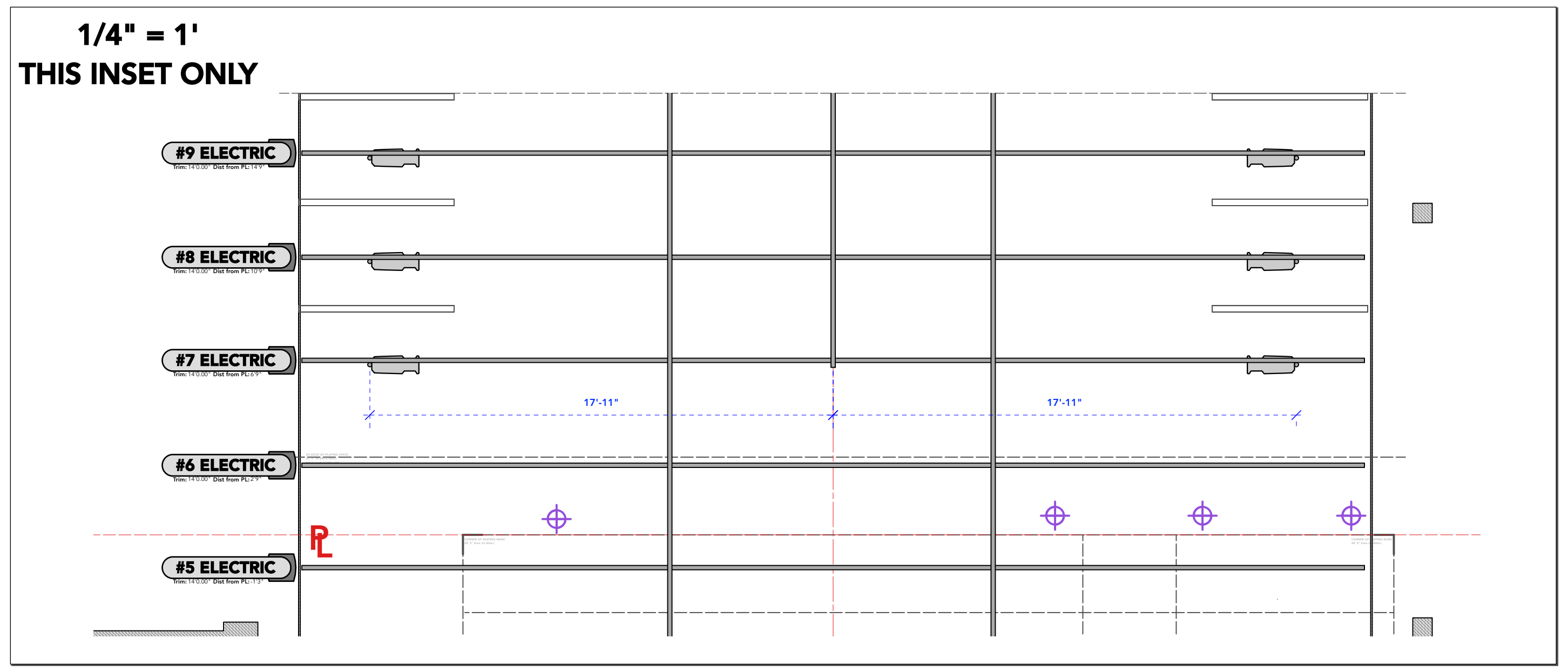
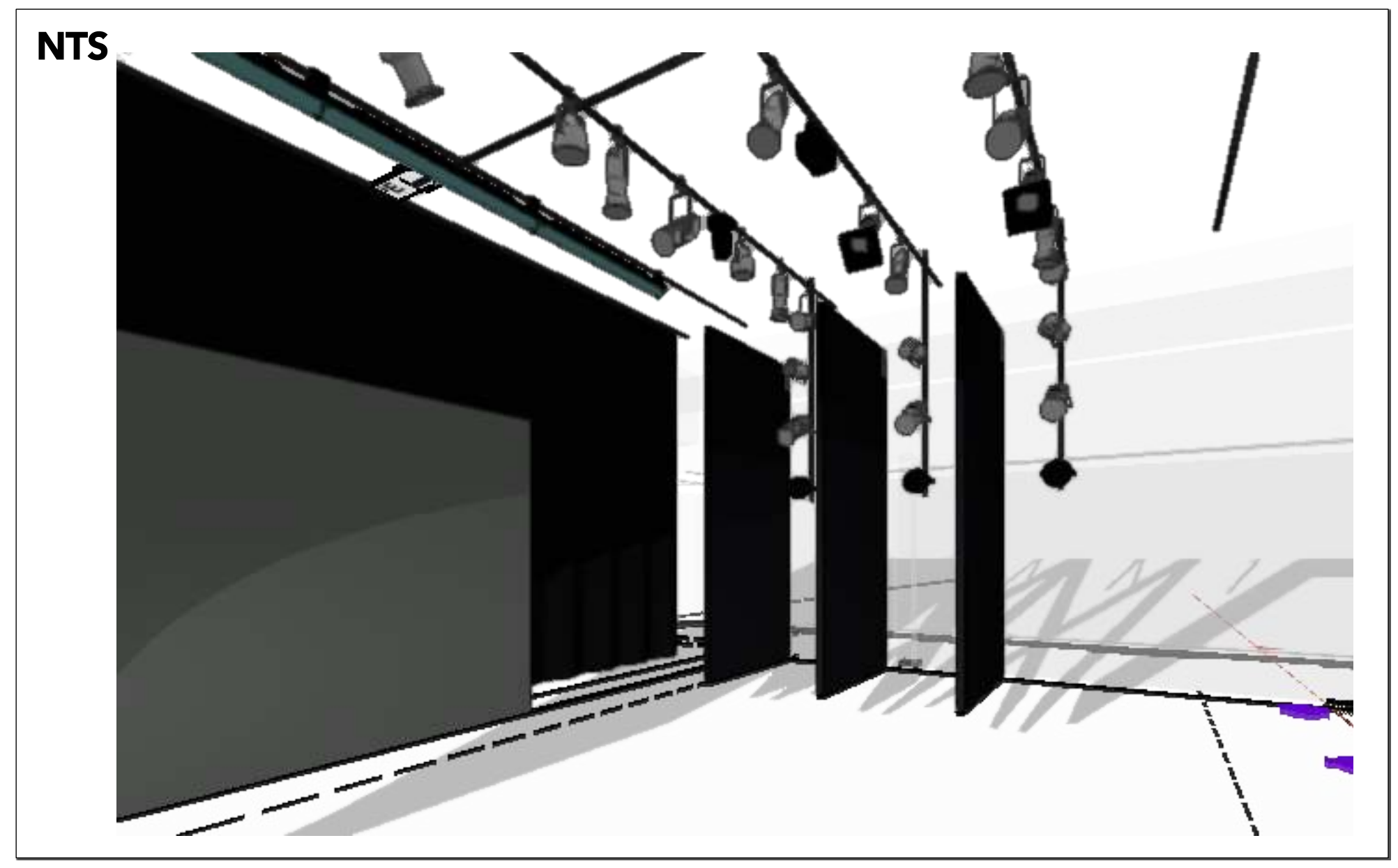
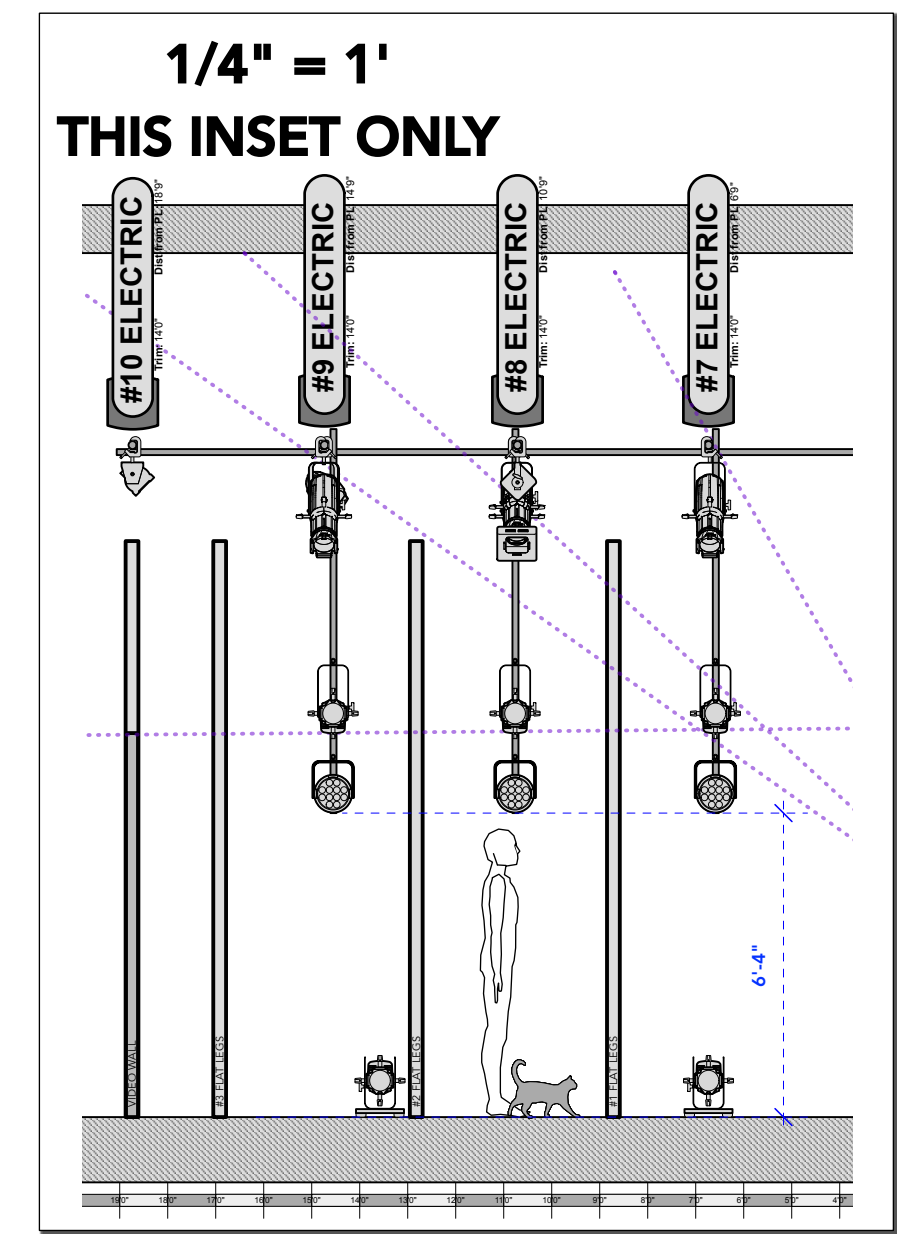
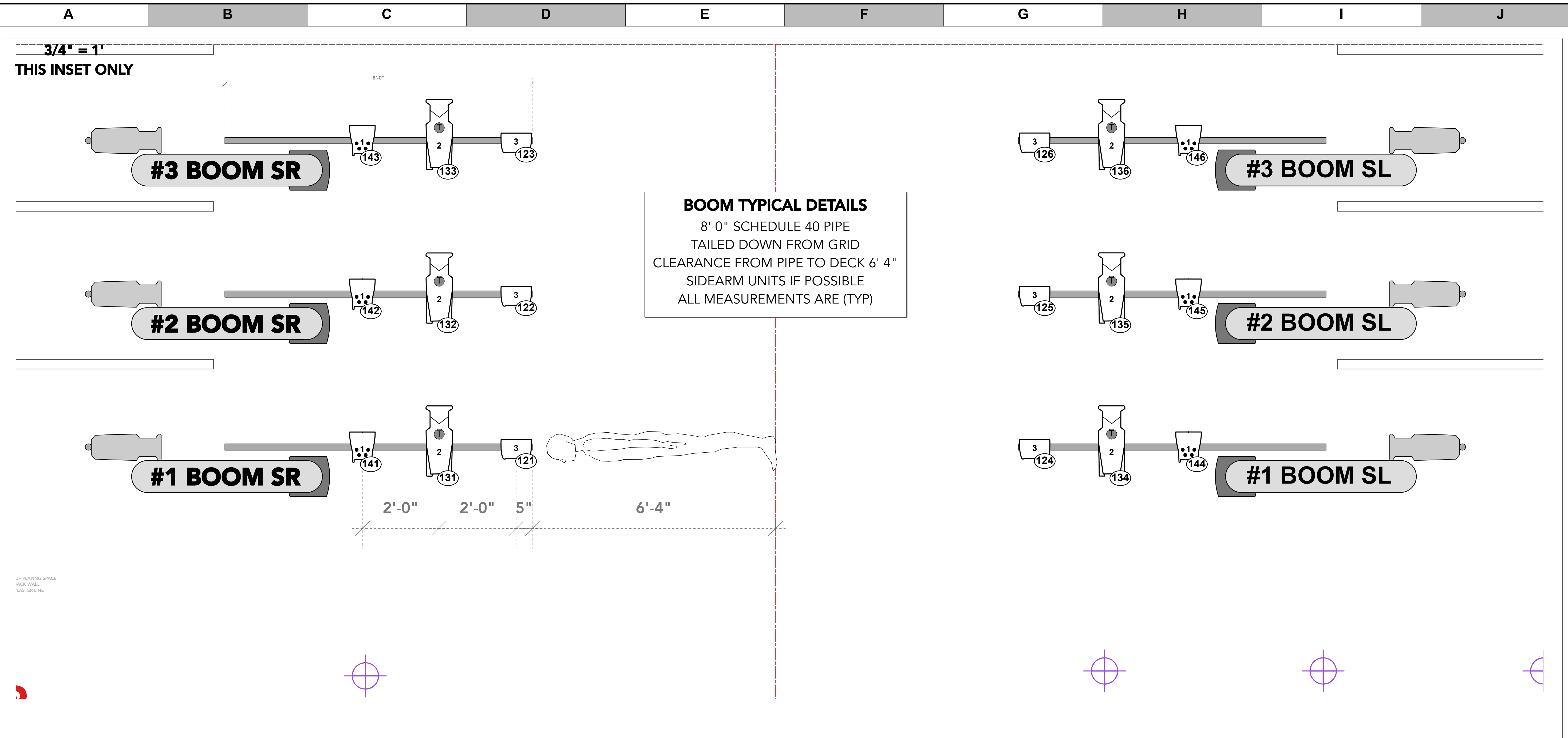
PRODUCTION STAFF
 DIRECTOR: ERIC DAVIS
 LIGHTING DESIGNER: MIKE WOOD
 SCENIC DESIGNER: ERIC DAVIS
 PRODUCTION ELEC: TRENTEN SZABO

freeFall theatre company
 2023 - St. Petersburg, FL

SCALE: NTS DWG NUMBER: L02 OF 5

PG SIZE: ARCH D

LIGHT PLOT - DECK/SET UTILITY / SCENIC



LEGEND

ABBREVIATIONS:
R = Roco
G = GAM
A = Apollo
LS = Line Set
GP = Ground Plan
SE = Electric
TD = Tech. Direct.
LD = Lighting Design

FOCUS
COLOR
LENS
TEMPLATE
UNIT #
ENGINE TYPE
CHANNEL #



MW LIGHTING LD# 10574
www.mwlighting.com

REVISION HISTORY

NO.	REVISION	DATE	BY

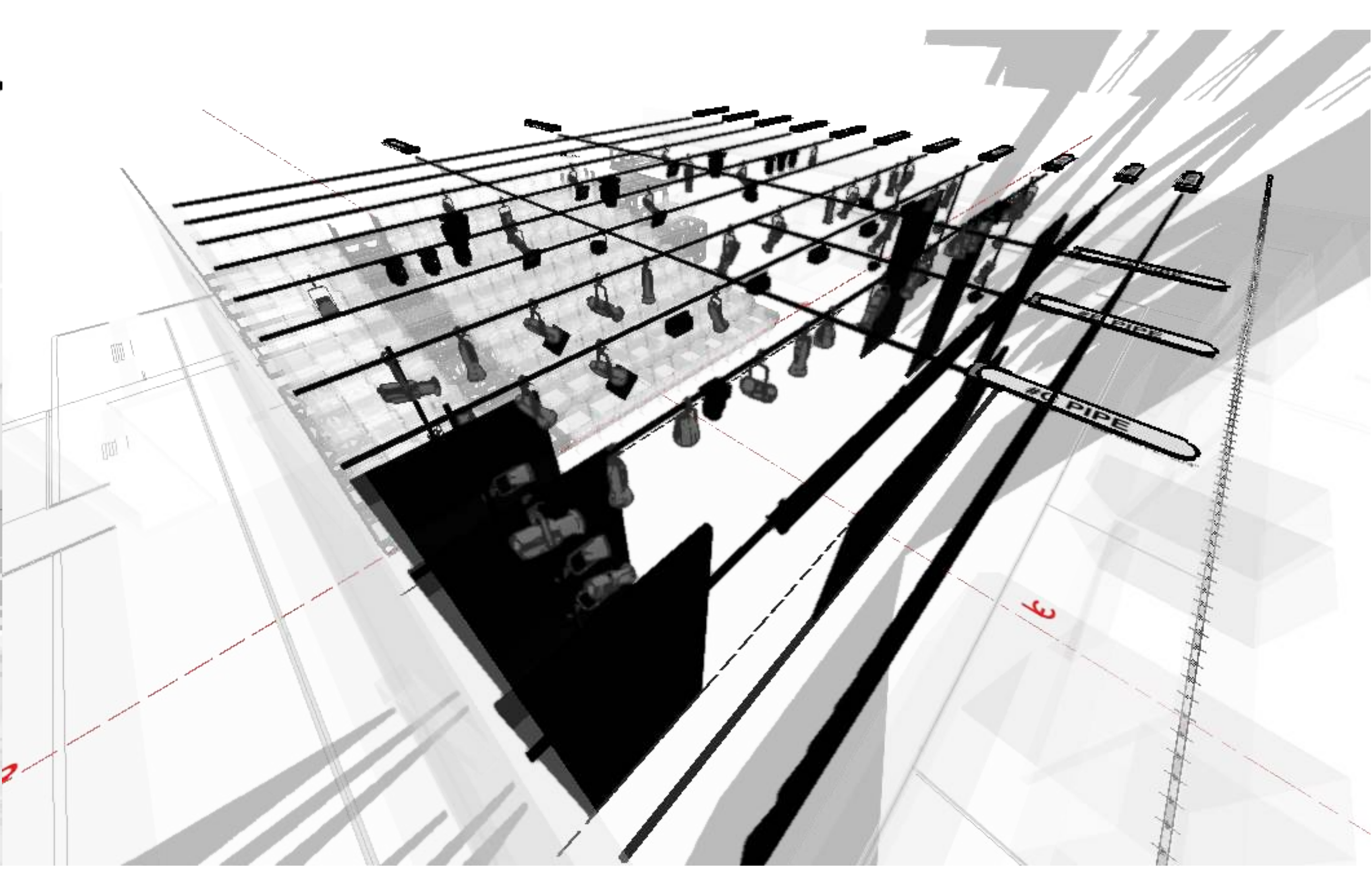
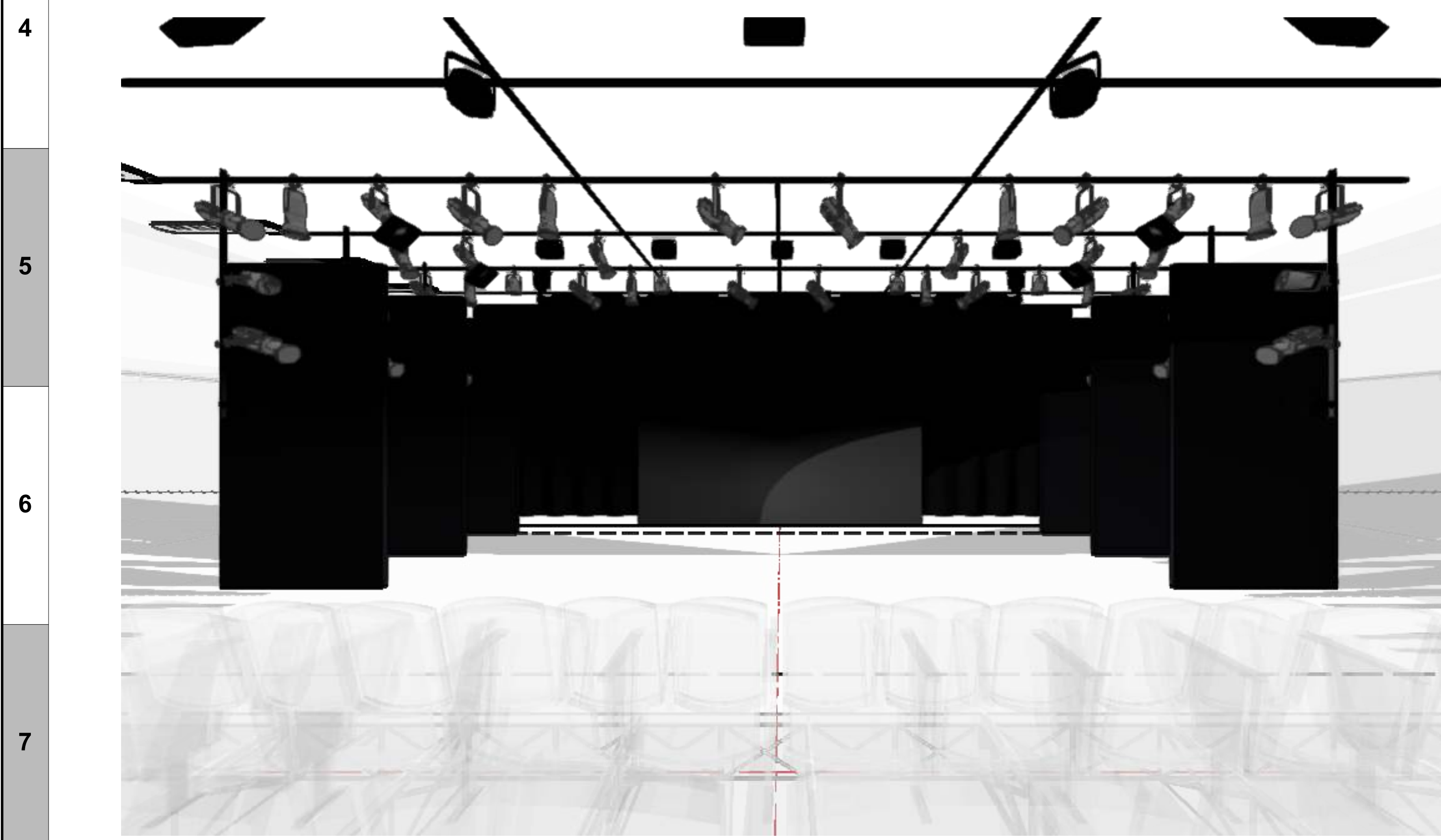
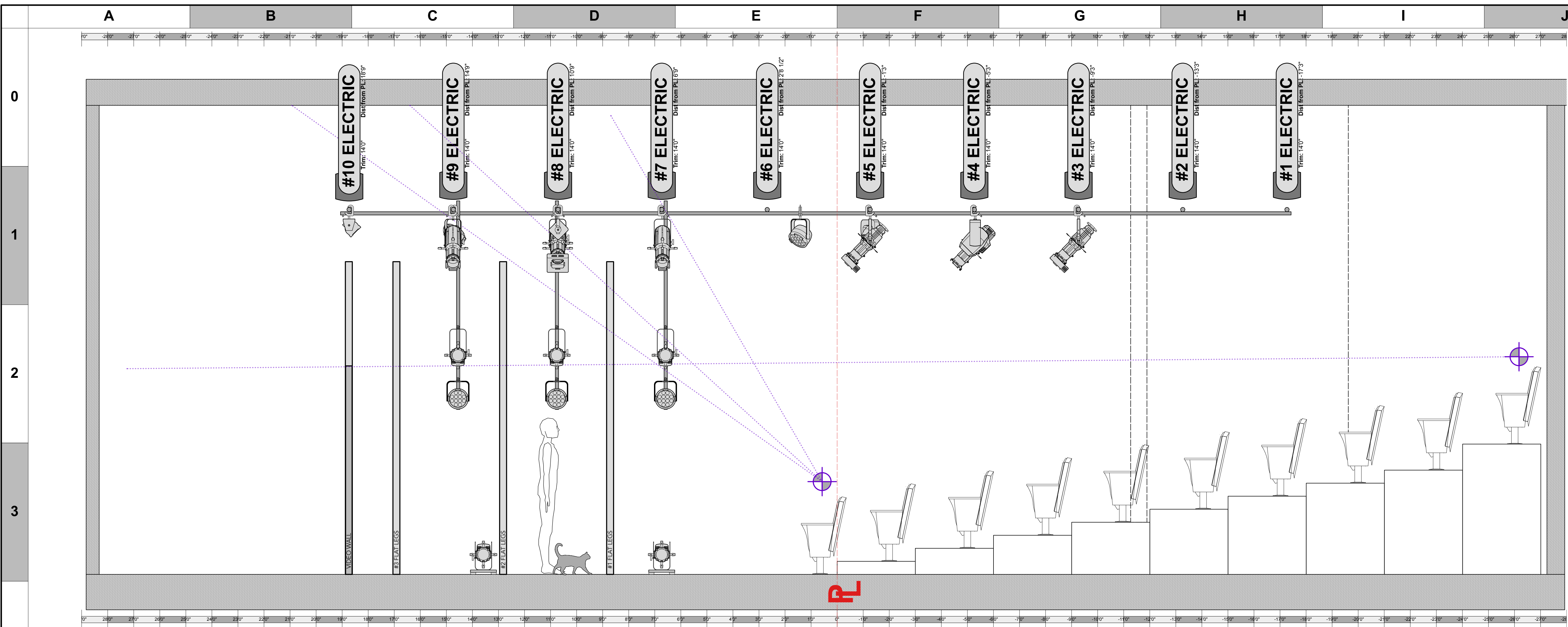
THE HOUSE OF FUTURE MEMORY

PRODUCTION STAFF
DIRECTOR: ERIC DAVIS
LIGHTING DESIGNER: MIKE WOOD
SCENIC DESIGNER: ERIC DAVIS
PRODUCTION ELEC: TRENTEN SZABO

freeFall theatre company
2025 - St. Petersburg, FL

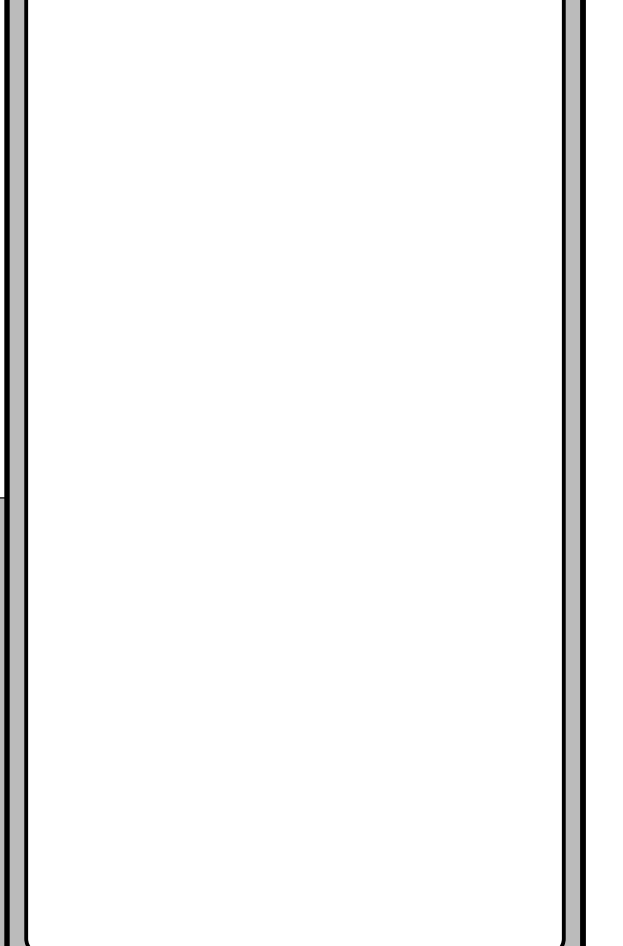
SCALE: **NTS** DWG NUMBER: **L03**
PG SIZE: **ARCH D** OF 5

LIGHT PLOT - SIDES
UTILITY / SCENIC



KEY TO INSTRUMENTATION

	Chauvet Rogue R2X Spot	3
	Chauvet Rogue R1 Wash	8
	36° Prolights Eclipse	12
	50° Prolights Eclipse	12
	Colordash Par	8
	Elation SixPar	8
	ETC Vivid 11	5
	S4 Junior 36°	22
	S4 PARNel	4
	Colorforce II 72	5
	ChromaQ Scroller	10
	RGB Various	See Dwg



LEGEND

ABBREVIATIONS:	FOCUS	COLOR	LEN	TEMP	UNIT	ENGINE TYPE	CHANNEL
R = Rococo	—	—	—	—	—	—	—
G = GAM	—	—	—	—	—	—	—
A = Apollo	—	—	—	—	—	—	—
LS = Line Set	—	—	—	—	—	—	—
GP = Ground Plan	—	—	—	—	—	—	—
SE = Electric	—	—	—	—	—	—	—
TD = Tech. Direct.	—	—	—	—	—	—	—
LD = Lighting Diagram	—	—	—	—	—	—	—



MW LIGHTING LD# 10574
www.mwlighting.com
 This drawing is the property of MW Lighting and is not to be reproduced or used in any way without the written consent of MW Lighting. The company design and other information contained herein are the confidential and proprietary information of MW Lighting and are not to be disclosed to any third party without the written consent of MW Lighting.

REVISION HISTORY

NO.	REVISION	DATE	BY
01	ISSUE	05/23	EW
02	ISSUE	05/23	EW
03	ISSUE	05/23	EW
04	ISSUE	05/23	EW
05	ISSUE	05/23	EW
06	ISSUE	05/23	EW
07	ISSUE	05/23	EW
08	ISSUE	05/23	EW
09	ISSUE	05/23	EW
10	ISSUE	05/23	EW

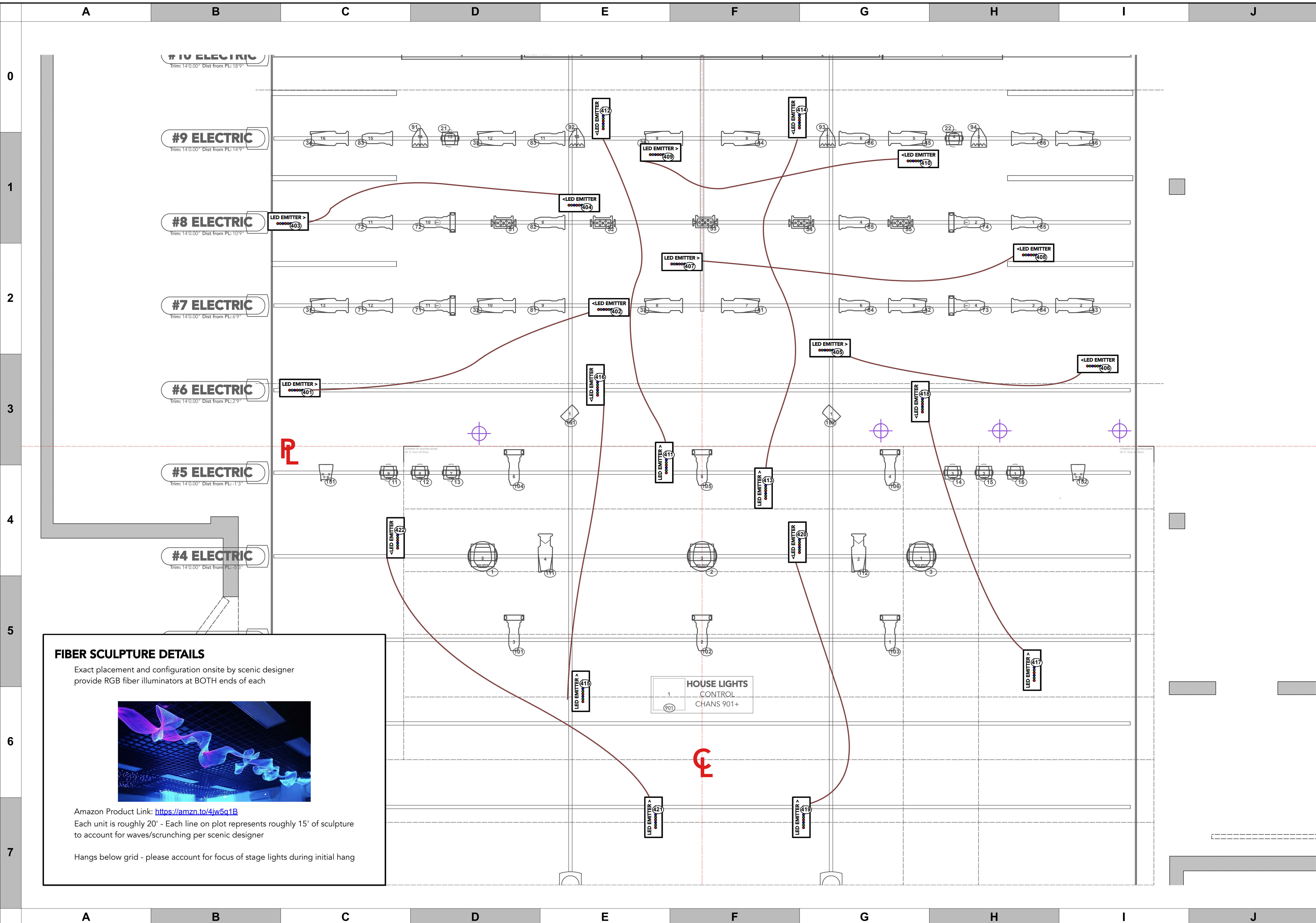
THE HOUSE OF FUTURE MEMORY

PRODUCTION STAFF
 DIRECTOR: ERIC DAVIS
 LIGHTING DESIGNER: MIKE WOOD
 SCENIC DESIGNER: ERIC DAVIS
 PRODUCTION ELEC: TRENTEN SZABO

freeFall theatre company
 2023 - St. Petersburg, FL

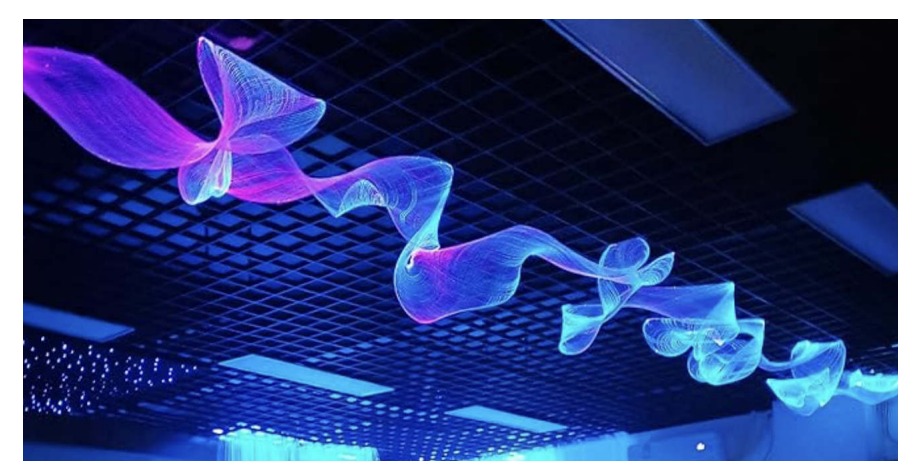
SCALE 1/2" = 1' DWG NUMBER L04 OF 5

LIGHT PLOT - SECTION @CL > SL



FIBER SCULPTURE DETAILS

Exact placement and configuration onsite by scenic designer provide RGB fiber illuminators at BOTH ends of each



Amazon Product Link: <https://amzn.to/4jw5q1B>

Each unit is roughly 20' - Each line on plot represents roughly 15' of sculpture to account for waves/scrunching per scenic designer

Hangs below grid - please account for focus of stage lights during initial hang

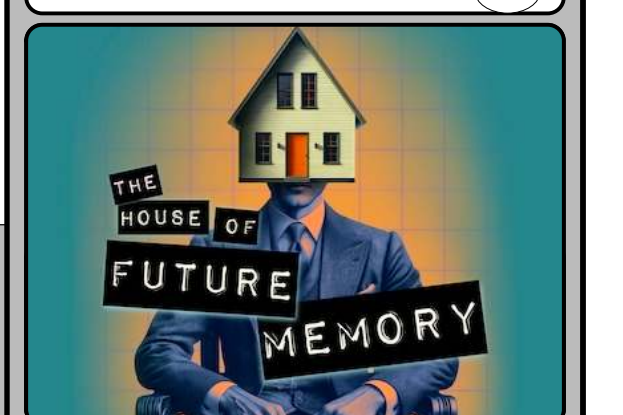
KEY TO INSTRUMENTATION

- Chauvet Rogue R2X Spot 3
- Chauvet Rogue R1 Wash 8
- 36° Prolights Eclipse 12
- 50° Prolights Eclipse 12
- Colordash Par 8
- Elation SixPar 8
- ETC Vivid 11 5
- S4 Junior 36° 22
- S4 PARNel 4
- Colorforce II 72 5
- ChromaQ Scroller 10
- RGB Various See Dwg

LEGEND

ABBREVIATIONS: R = Focus, G = GAM, A = Apollo, LS = Line Set, GP = Ground Plan, LE = Electric, TD = Tech. Direct, LD = Lighting Diag.

FOCUS COLOR, LENS, TEMPLATE, UNIT #, ENGINE TYPE, CHANNEL #



MW LIGHTING LD# 10574

REVISION HISTORY

NO.	REVISION	DATE	BY

THE HOUSE OF FUTURE MEMORY

PRODUCTION STAFF

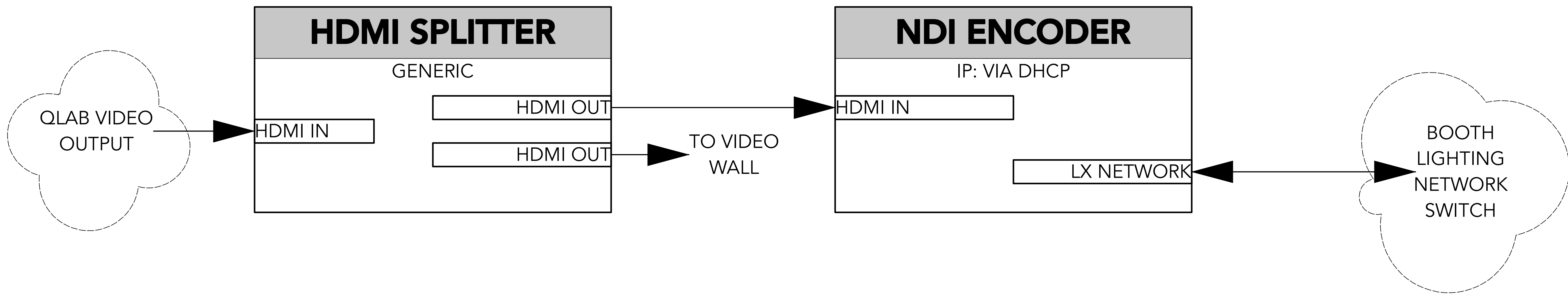
DIRECTOR: ERIC DAVIS
 LIGHTING DESIGNER: MIKE WOOD
 SCENIC DESIGNER: ERIC DAVIS
 PRODUCTION ELEC: TRENTE SZABO

freeFall theatre company
 2023 - St. Petersburg, FL

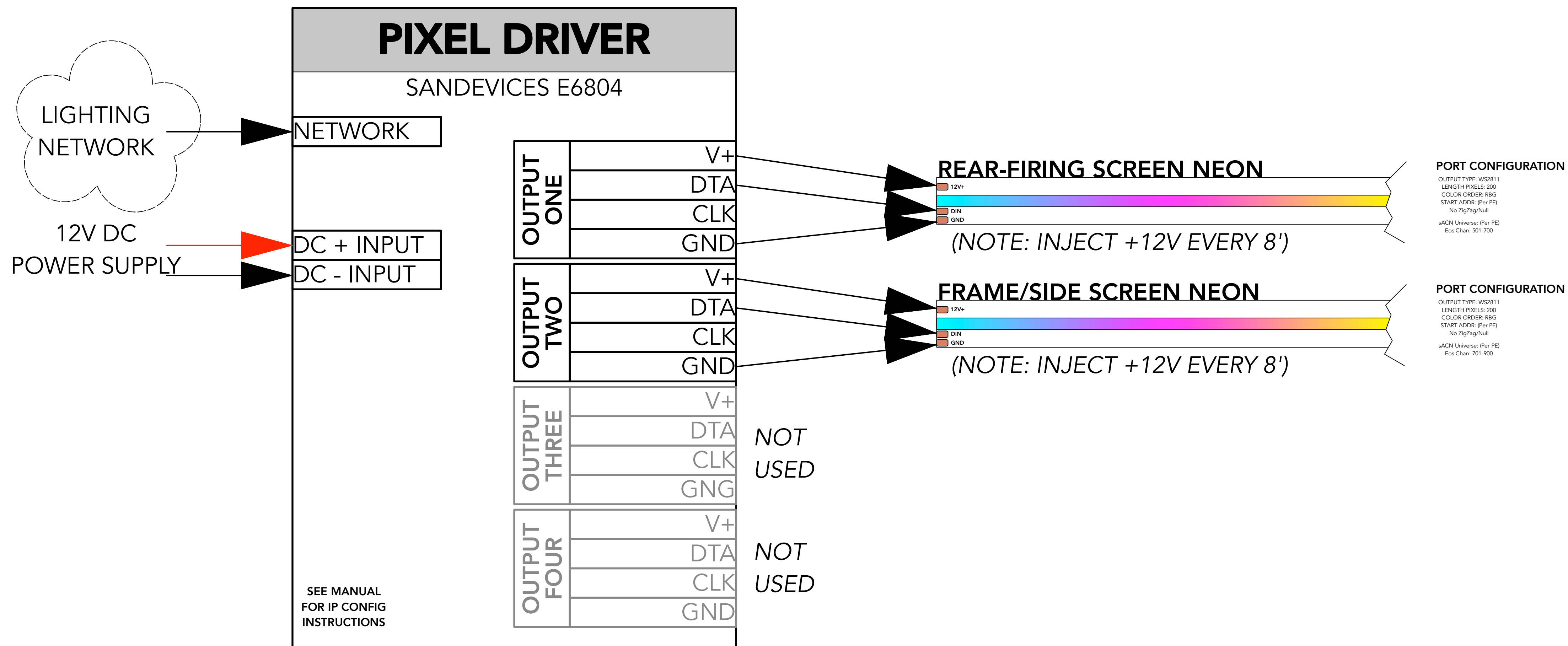
SCALE: NTS DWG NUMBER: L05 OF 5
 PG SIZE: ARCH D

LIGHT PLOT - MESH UTILITY / SCENIC

System Riser - NDI Video



System Riser - Pixel Controller



KEY TO INSTRUMENTATION

	Chauvet Rogue R2X Spot	3
	Chauvet Rogue R1 Wash	8
	36° Prolights Eclipse	12
	50° Prolights Eclipse	12
	Colordash Par	8
	Elation SixPar	8
	ETC Vivid 11	5
	S4 Junior 36°	22
	S4 PARNel	4
	Colorforce II 72	5
	ChromaQ Scroller	10
	RGB Various	See Dwg

LEGEND

ABBREVIATIONS: R = Rosco, G = GAM, A = Apollo, LS = Line Set, GP = Ground Plan, LV = Electric, TD = Tech. Direct, LD = Lighting Diagram.

FOCUS: FOC, CLR

COLOR: COLOR

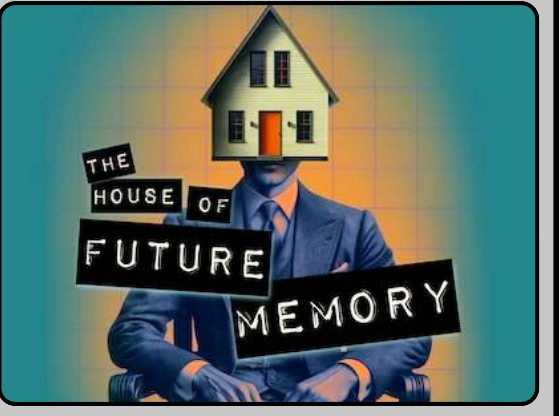
LENSE: LENS

TEMPLATE: TEMPLATE

UNIT #: UNIT #

ENGINE TYPE: ENGINE TYPE

CHANNEL #: CHANNEL #



MW LIGHTING LD# 10574

The lighting content in this drawing and associated equipment. The lighting design and stage plot are provided as a service to the client and are not to be used for any other purpose without the written consent of MW Lighting. All other content is the property of the client and is not to be used for any other purpose without the written consent of the client.

REVISION HISTORY

NO.	REVISION	DATE	BY
01	ISSUED	10/20/23	ED
02	REVISED	10/20/23	ED
03	REVISED	10/20/23	ED

THE HOUSE OF FUTURE MEMORY

PRODUCTION STAFF

DIRECTOR:	ERIC DAVIS
LIGHTING DESIGNER:	MIKE WOOD
SCENIC DESIGNER:	ERIC DAVIS
PRODUCTION ELEC:	TRENTEN SZABO

freeFall theatre company
2025 - St. Petersburg, FL

SCALE	NTS	DWG NUMBER	L06
PG SIZE	ARCH D	OF 5	

RISER - NETWORK DEV SPECIAL DEVICES