

KEY TO INSTRUMENTATION

	Martin Mac Ultra Performance	6
	S4 Revolution	3
	Martin Aura	10
	S4-10°	16
	S4-14°	24
	S4-19°	34
	S4-26°	48
	S4-36°	67
	S4-50°	6
	S4 PAR WNSP	2
	S4 PAR NSP	5
	S4 PAR WFL	9
	3° FRES INKIE	2
	S4-14° LED Lustr II	16
	S4-19° LED Lustr II	16
	S4-26° LED Lustr II	9
	S4-36° LED Lustr II	5
	ETC D60 Lustr	31
	ChromaQ Colorforce II 72	10
	Practical	11

LEGEND

ABBREVIATIONS:
 R = Rosco
 G = GAM
 A = Apollo
 LS = Line Set
 GP = Ground Plan
 LX = Electric
 TD = Tech. Direct.
 LD = Lighting Desgr.

FOCUS COLOR
 LENS
 TEMPLATE
 UNIT #
 ENGINE TYPE
 CHANNEL #



MW LIGHTING LD# 10574
 www.mwlighting.com
 www.thewoodlark.com

REVISION HISTORY

NO.	REVISION	DATE	BY
201	SCENIC LAYOUT / DOC PREP	31 OCT 22	MFY
202	FRES INKIE INCORPORATED	11 NOV 22	MFY
203	SECTION A DUS	30 NOV 22	MFY
204	2 BROWNS 11	2 DEC 22	MFY
205	SUBMITAL v2	10 DEC 22	MFY

THE HOT WING KING

PRODUCTION STAFF
 DIRECTOR KATORI HALL
 LIGHTING DESIGNER MIKE WOOD
 ASST. LIGHTING DSGNR TONI STERLING
 PROD. ELEC RACHAEL BLACKWELL
 SCENIC DESIGN MICHAEL CARNAHAN

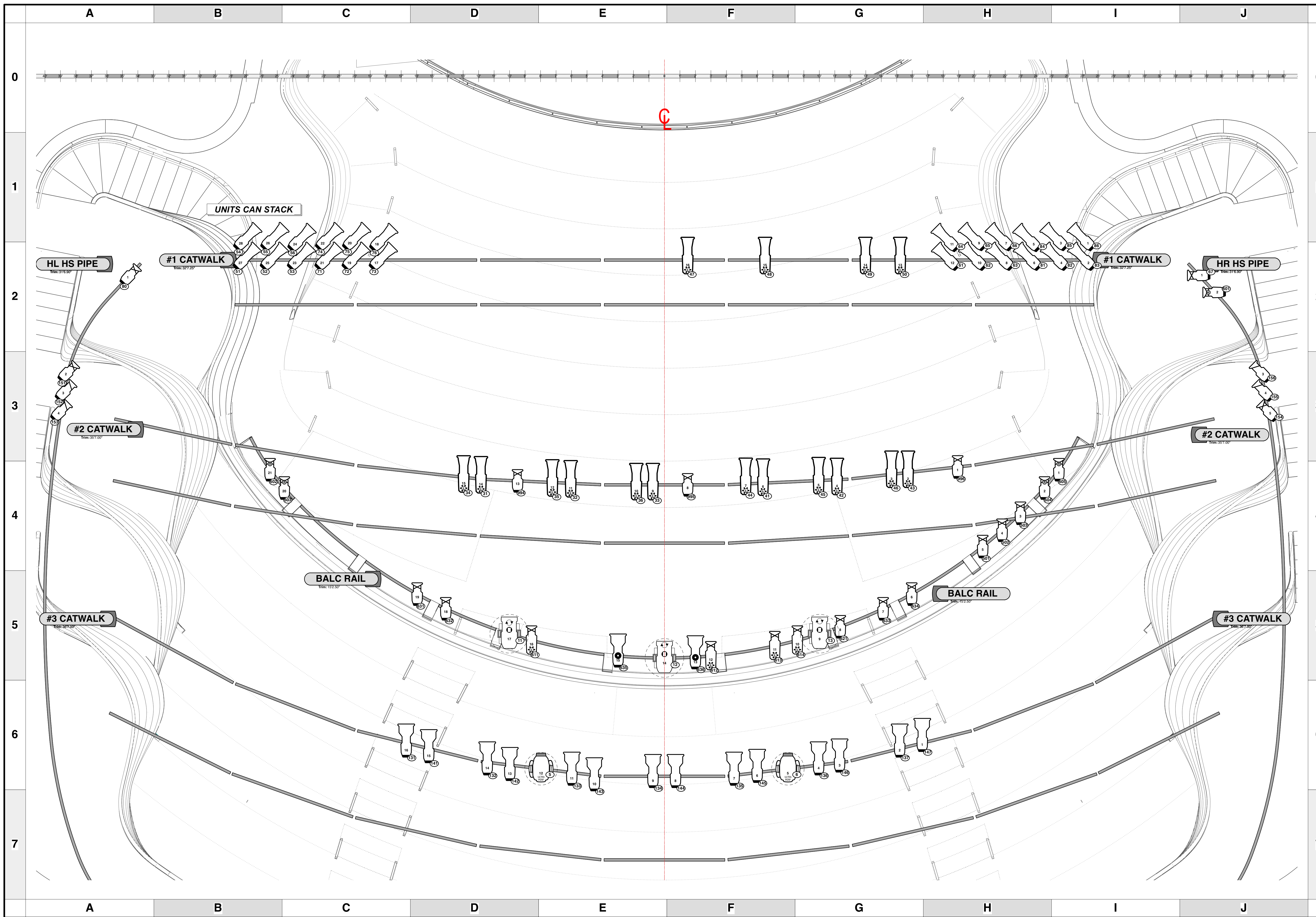
Alliance ATLANTA, GA
 Theatre of the Woodlark
 FEBRUARY/MARCH 2023

SCALE **3/8" = 1'**
 UNLESS OTHERWISE NOTED

PG SIZE ARCH D DWG NUMBER **1** OF 5

LIGHTING PLOT
 OVERSTAGE HANG

LS #	Trim	Wings Deck	D' to PL	Description
59	0'-0"		35'-1"	#7 ELECTRIC
58	0'-0"		34'-7"	[EMPTY]
57	0'-0"		34'-1"	[EMPTY]
56	0'-0"		33'-7"	[EMPTY]
55	0'-0"		33'-1"	[EMPTY]
54	0'-0"		32'-7"	[EMPTY]
53	0'-0"		32'-1"	[EMPTY]
52	0'-0"		31'-7"	[EMPTY]
51	0'-0"		31'-1"	[EMPTY]
50	0'-0"		30'-7"	RP SCREEN
49	0'-0"		30'-1"	[EMPTY]
48	0'-0"		29'-7"	#6 ELECTRIC
47	0'-0"		29'-1"	[EMPTY]
46	0'-0"		27'-7"	BLACK SCRIM
45	0'-0"		27'-1"	RP FRAME LEGS
44	N/A		26'-7"	GRID OBSTRUCTION
43	0'-0"		26'-1"	#5 BLACK BORDER / FSB
42	0'-0"		25'-7"	[EMPTY]
41	0'-0"		25'-1"	[EMPTY]
40	0'-0"		24'-7"	[EMPTY]
39	0'-0"		24'-1"	[EMPTY]
38	0'-0"		23'-7"	[EMPTY]
37	0'-0"		23'-1"	#5 ELECTRIC
36	0'-0"		22'-7"	[EMPTY]
35	0'-0"		22'-1"	[EMPTY]
34	0'-0"		21'-7"	[EMPTY]
33	0'-0"		21'-1"	[EMPTY]
32	0'-0"		20'-7"	[EMPTY]
31	0'-0"		20'-1"	#5 BLACK BORDER
30	0'-0"		19'-7"	[EMPTY]
29	0'-0"		19'-1"	[EMPTY]
28	0'-0"		18'-7"	[EMPTY]
27	0'-0"		18'-1"	[EMPTY]
26	0'-0"		16'-7"	[EMPTY]
25	0'-0"		16'-1"	[EMPTY]
24	0'-0"		15'-7"	[EMPTY]
23	0'-0"		15'-1"	#4 ELECTRIC
22	0'-0"		14'-7"	[EMPTY]
21	0'-0"		14'-1"	[EMPTY]
20	0'-0"		13'-7"	#4 BLACK BORDER
19	0'-0"		13'-1"	[EMPTY]
18	0'-0"		12'-7"	[EMPTY]
17	0'-0"		12'-1"	#3B ELECTRIC
16	0'-0"		11'-7"	[EMPTY]
15	0'-0"		11'-1"	#3A ELECTRIC
14	0'-0"		10'-7"	[EMPTY]
13	0'-0"		10'-1"	#3 BLACK BORDER
12	0'-0"		9'-1"	[EMPTY]
11	0'-0"		8'-7"	#2B ELECTRIC
10	0'-0"		8'-1"	[EMPTY]
9	0'-0"		7'-7"	#2A ELECTRIC
8	0'-0"		7'-1"	AUDIO MONITORS
7	0'-0"		5'-7"	#2 BLACK BORDER
6	0'-0"		5'-1"	[EMPTY]
5	0'-0"		4'-7"	[EMPTY]
4	0'-0"		4'-1"	#1B ELECTRIC
3	0'-0"		3'-1 1/2"	#1A ELECTRIC
2	0'-0"		2'-7 1/2"	[EMPTY]
1	0'-0"		2'-1"	FLOWN SIGNS
0	0'-0"		1'-7"	#1 BLACK BORDER



KEY TO INSTRUMENTATION

	Martin Mac Ultra Performance	6
	S4 Revolution	3
	Martin Aura	10
	S4-10°	16
	S4-14°	24
	S4-19°	34
	S4-26°	48
	S4-36°	67
	S4-50°	6
	S4 PAR VNSP	2
	S4 PAR NSP	5
	S4 PAR WFL	9
	3° FRES INKIE	2
	S4-14° LED Lustr II	16
	S4-19° LED Lustr II	16
	S4-26° LED Lustr II	9
	S4-36° LED Lustr II	5
	ETC D60 Lustr	31
	ChromaColorforce II 72	10
	Practical	11

LEGEND

ABBREVIATIONS:
 R = Rosco
 A = Apollo
 LS = Line Set
 GP = Ground Plan
 LX = Electric
 TD = Tech. Direct.
 LD = Lighting Design

FOCUS COLOR
 LENS
 TEMPLATE
 UNIT #
 ENGINE TYPE
 CHANNEL #



REVISION HISTORY

NO.	REVISION	DATE	BY
001	SCENIC LAYOUT / DOC PREP	31 OCT 22	MAP
002	FRES INKIE'S INCORPORATED	11 NOV 22	MAP
003	SECTION ADDED	30 NOV 22	MAP
004	2 BOXES	2 DEC 22	MAP
005	SUBMITAL V2	18 DEC 22	MAP

THE HOT WING KING

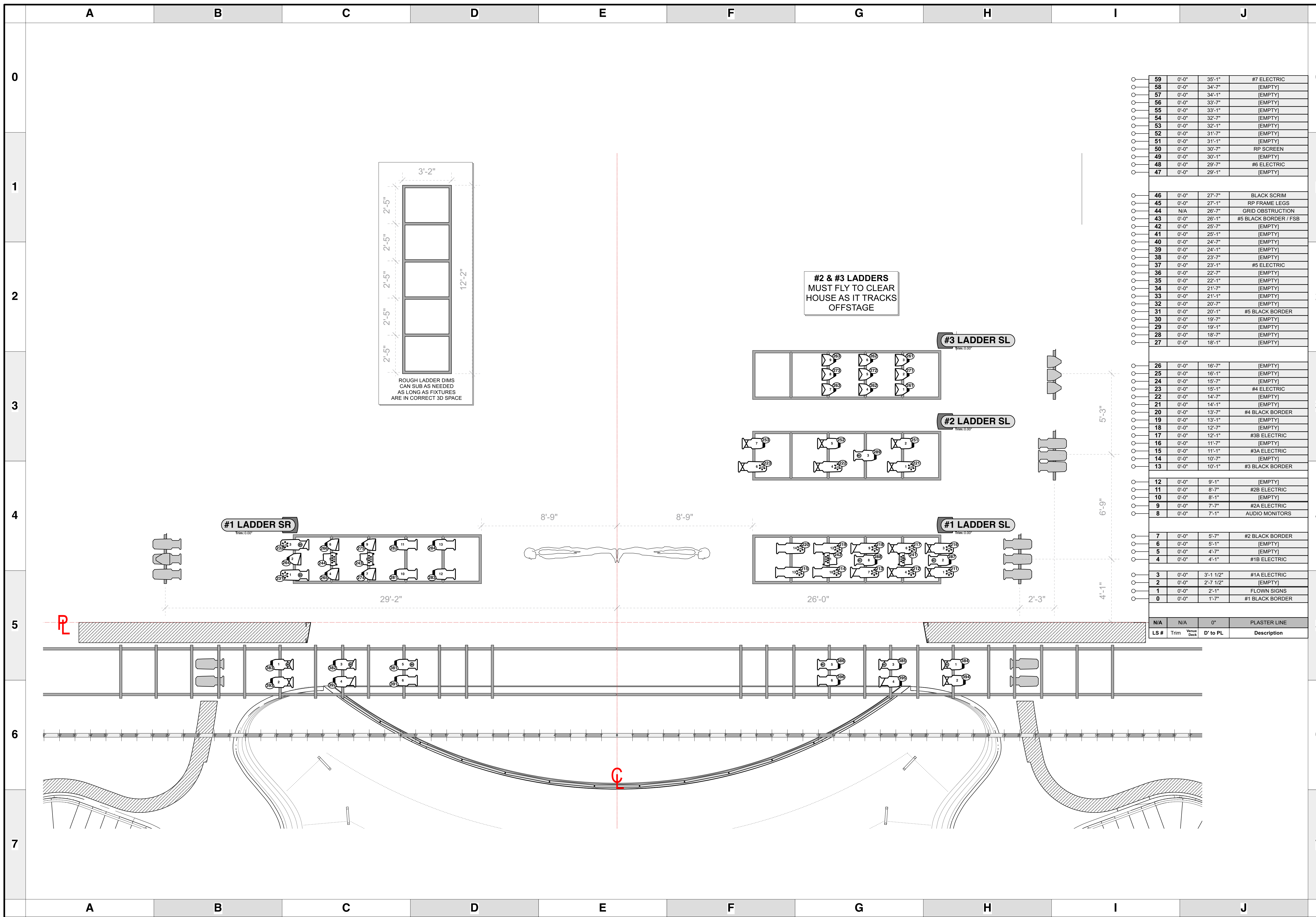
PRODUCTION STAFF
 DIRECTOR KATORI HALL
 LIGHTING DESIGNER MIKE WOOD
 ASST. LIGHTING DSGNR TONI STERLING
 PROD. ELEC RACHAEL BLACKWELL
 SCENIC DESIGN MICHAEL CARNAHAN

Alliance ATLANTA, GA
 FEBRUARY/MARCH 2023

SCALE **3/8" = 1'**
 UNLESS OTHERWISE NOTED

PG SIZE ARCH D DWG NUMBER **2** OF 5

LIGHTING PLOT
 FOH



KEY TO INSTRUMENTATION

	Martin Mac Ultra Performance	6
	S4 Revolution	3
	Martin Aura	10
	S4-10°	16
	S4-14°	24
	S4-19°	34
	S4-26°	48
	S4-36°	67
	S4-50°	6
	S4 PAR WNSP	2
	S4 PAR NSP	5
	S4 PAR WFL	9
	3° FRES INKIE	2
	S4-14° LED Lustr II	16
	S4-19° LED Lustr II	16
	S4-26° LED Lustr II	9
	S4-36° LED Lustr II	5
	ETC D60 Lustr	31
	ChromaQ Colorforce II 72	10
	Practical	11

59	0'-0"	35'-1"	#7 ELECTRIC	
58	0'-0"	34'-7"	[EMPTY]	
57	0'-0"	34'-1"	[EMPTY]	
56	0'-0"	33'-7"	[EMPTY]	
55	0'-0"	33'-1"	[EMPTY]	
54	0'-0"	32'-7"	[EMPTY]	
53	0'-0"	32'-1"	[EMPTY]	
52	0'-0"	31'-7"	[EMPTY]	
51	0'-0"	31'-1"	[EMPTY]	
50	0'-0"	30'-7"	RP SCREEN	
49	0'-0"	30'-1"	[EMPTY]	
48	0'-0"	29'-7"	#6 ELECTRIC	
47	0'-0"	29'-1"	[EMPTY]	
46	0'-0"	27'-7"	BLACK SCRIM	
45	0'-0"	27'-1"	RP FRAME LEGS	
44	N/A	26'-7"	GRID OBSTRUCTION	
43	0'-0"	26'-1"	#5 BLACK BORDER / FSB	
42	0'-0"	25'-7"	[EMPTY]	
41	0'-0"	25'-1"	[EMPTY]	
40	0'-0"	24'-7"	[EMPTY]	
39	0'-0"	24'-1"	[EMPTY]	
38	0'-0"	23'-7"	[EMPTY]	
37	0'-0"	23'-1"	#5 ELECTRIC	
36	0'-0"	22'-7"	[EMPTY]	
35	0'-0"	22'-1"	[EMPTY]	
34	0'-0"	21'-7"	[EMPTY]	
33	0'-0"	21'-1"	[EMPTY]	
32	0'-0"	20'-7"	[EMPTY]	
31	0'-0"	20'-1"	#5 BLACK BORDER	
30	0'-0"	19'-7"	[EMPTY]	
29	0'-0"	19'-1"	[EMPTY]	
28	0'-0"	18'-7"	[EMPTY]	
27	0'-0"	18'-1"	[EMPTY]	
26	0'-0"	16'-7"	[EMPTY]	
25	0'-0"	16'-1"	[EMPTY]	
24	0'-0"	15'-7"	[EMPTY]	
23	0'-0"	15'-1"	#4 ELECTRIC	
22	0'-0"	14'-7"	[EMPTY]	
21	0'-0"	14'-1"	[EMPTY]	
20	0'-0"	13'-7"	#4 BLACK BORDER	
19	0'-0"	13'-1"	[EMPTY]	
18	0'-0"	12'-7"	[EMPTY]	
17	0'-0"	12'-1"	#3B ELECTRIC	
16	0'-0"	11'-7"	[EMPTY]	
15	0'-0"	11'-1"	#3A ELECTRIC	
14	0'-0"	10'-7"	[EMPTY]	
13	0'-0"	10'-1"	#3 BLACK BORDER	
12	0'-0"	9'-1"	[EMPTY]	
11	0'-0"	8'-7"	#2B ELECTRIC	
10	0'-0"	8'-1"	[EMPTY]	
9	0'-0"	7'-7"	#2A ELECTRIC	
8	0'-0"	7'-1"	AUDIO MONITORS	
7	0'-0"	5'-7"	#2 BLACK BORDER	
6	0'-0"	5'-1"	[EMPTY]	
5	0'-0"	4'-7"	[EMPTY]	
4	0'-0"	4'-1"	#1B ELECTRIC	
3	0'-0"	3'-1 1/2"	#1A ELECTRIC	
2	0'-0"	2'-7 1/2"	[EMPTY]	
1	0'-0"	2'-1"	FLOWN SIGNS	
0	0'-0"	1'-7"	#1 BLACK BORDER	
N/A	N/A	0"	PLASTER LINE	
LS #	Trim	Wash Deck	D' to PL	Description

LEGEND

ABBREVIATIONS:
 R = Rosco
 G = GAM
 A = Apollo
 LS = Line Set
 GP = Ground Plan
 LX = Electric
 TD = Tech. Direct.
 LD = Lighting Design

FOCUS COLOR
 FOC CLR
 LENS
 TEMPLATE
 UNIT #
 ENGINE TYPE
 CHANNEL #



REVISION HISTORY

NO.	REVISION	DATE	BY
001	SCENIC LAYOUT / DOC PREP	31 OCT 22	MMW
002	PRELIMS V1 INCOMPLETE	11 NOV 22	MMW
003	SECTION A&D	30 NOV 22	MMW
004	2-8&9	2 DEC 22	MMW
005	SUBMITAL v2	18 DEC 22	MMW

THE HOT WING KING

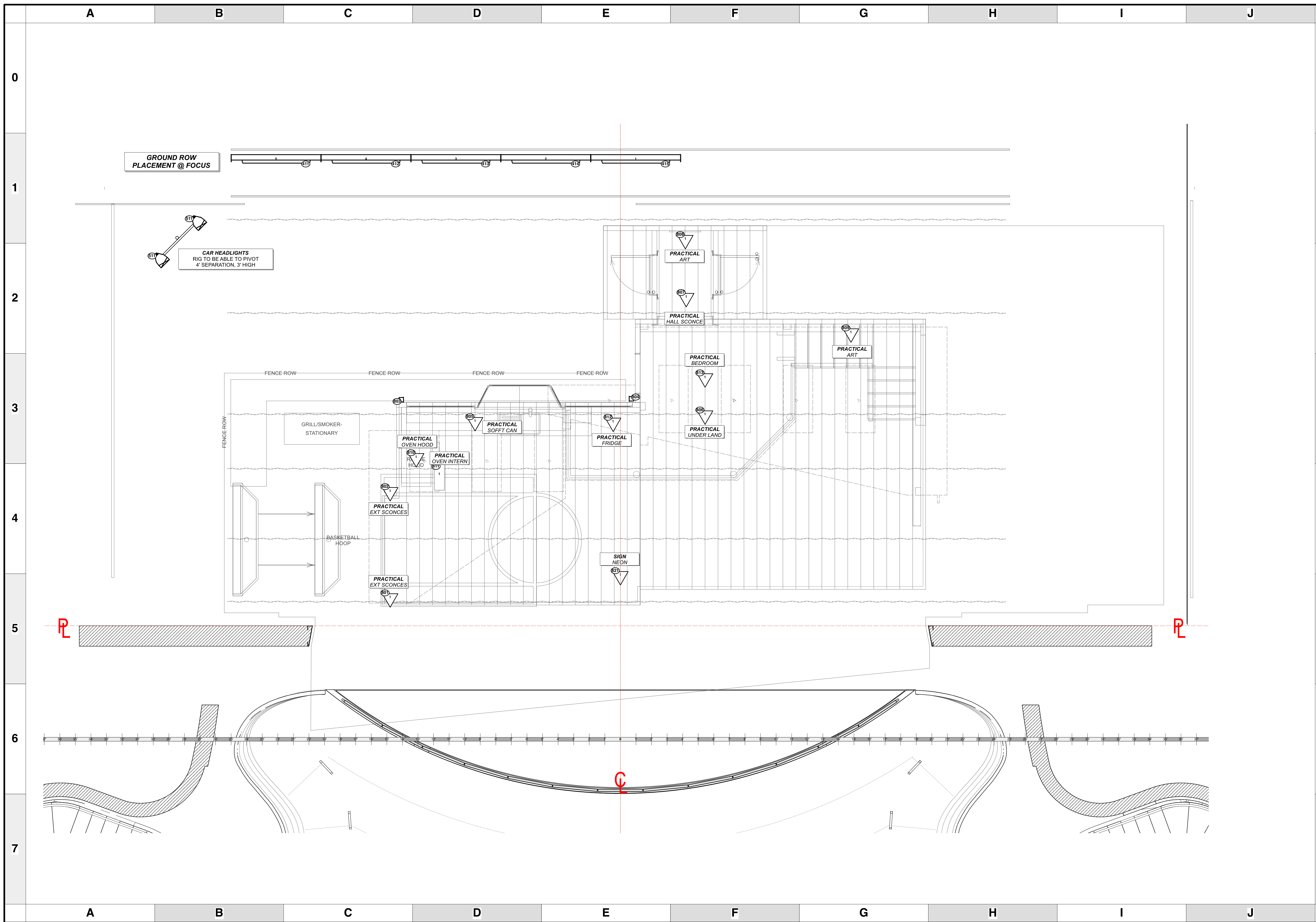
PRODUCTION STAFF
 DIRECTOR KATORI HALL
 LIGHTING DESIGNER MIKE WOOD
 ASST. LIGHTING DESIGNER TONI STERLING
 PROD. ELEC RACHAEL BLACKWELL
 SCENIC DESIGN MICHAEL CARNAHAN

Alliance ATLANTA, GA
 Theatre of the Woodlark
 FEBRUARY/MARCH 2023

SCALE **3/8" = 1'**
 UNLESS OTHERWISE NOTED

PG SIZE ARCH D DWG NUMBER **3** OF 5

LIGHTING PLOT
 LADDERS



KEY TO INSTRUMENTATION

	Martin Mac Ultra Performance	6
	S4 Revolution	3
	Martin Aura	10
	S4-10°	16
	S4-14°	24
	S4-19°	34
	S4-26°	48
	S4-36°	67
	S4-50°	6
	S4 PAR WNSP	2
	S4 PAR NSP	5
	S4 PAR WFL	9
	3° FRES INKIE	2
	S4-14° LED Lustr II	16
	S4-19° LED Lustr II	16
	S4-26° LED Lustr II	9
	S4-36° LED Lustr II	5
	ETC D60 Lustr	31
	ChromaColorforce II 72	10
	Practical	11

LEGEND

ABBREVIATIONS: R = Rosco, G = GAM, A = Apollo, LS = Line Set, GP = Ground Plan, LX = Electric, TD = Tech. Direct, LD = Lighting Dsgnr

FOCUS COLOR: FOC CLR

LENS: LENS

TEMPLATE: TEMPLATE

UNIT #: UNIT #

ENGINE TYPE: ENGINE TYPE

CHANNEL #: CHANNEL #



MW LIGHTING LD# 10574

www.mwlighting.com

REVISION HISTORY

NO.	REVISION	DATE	BY
001	SCENIC LAYOUT / DOC PREP	31 OCT 22	MMW
002	FRES INKIE INCOMPLETED	11 NOV 22	MMW
003	SECTION ADEUS	30 NOV 22	MMW
004	3 BATHS	2 DEC 22	MMW
005	SUBMITAL v2	19 DEC 22	MMW

THE HOT WING KING

PRODUCTION STAFF

DIRECTOR: KATORI HALL
 LIGHTING DESIGNER: MIKE WOOD
 ASST. LIGHTING DSGNR: TONI STERLING
 PROD. ELEC: RACHAEL BLACKWELL
 SCENIC DESIGN: MICHAEL CARNAHAN

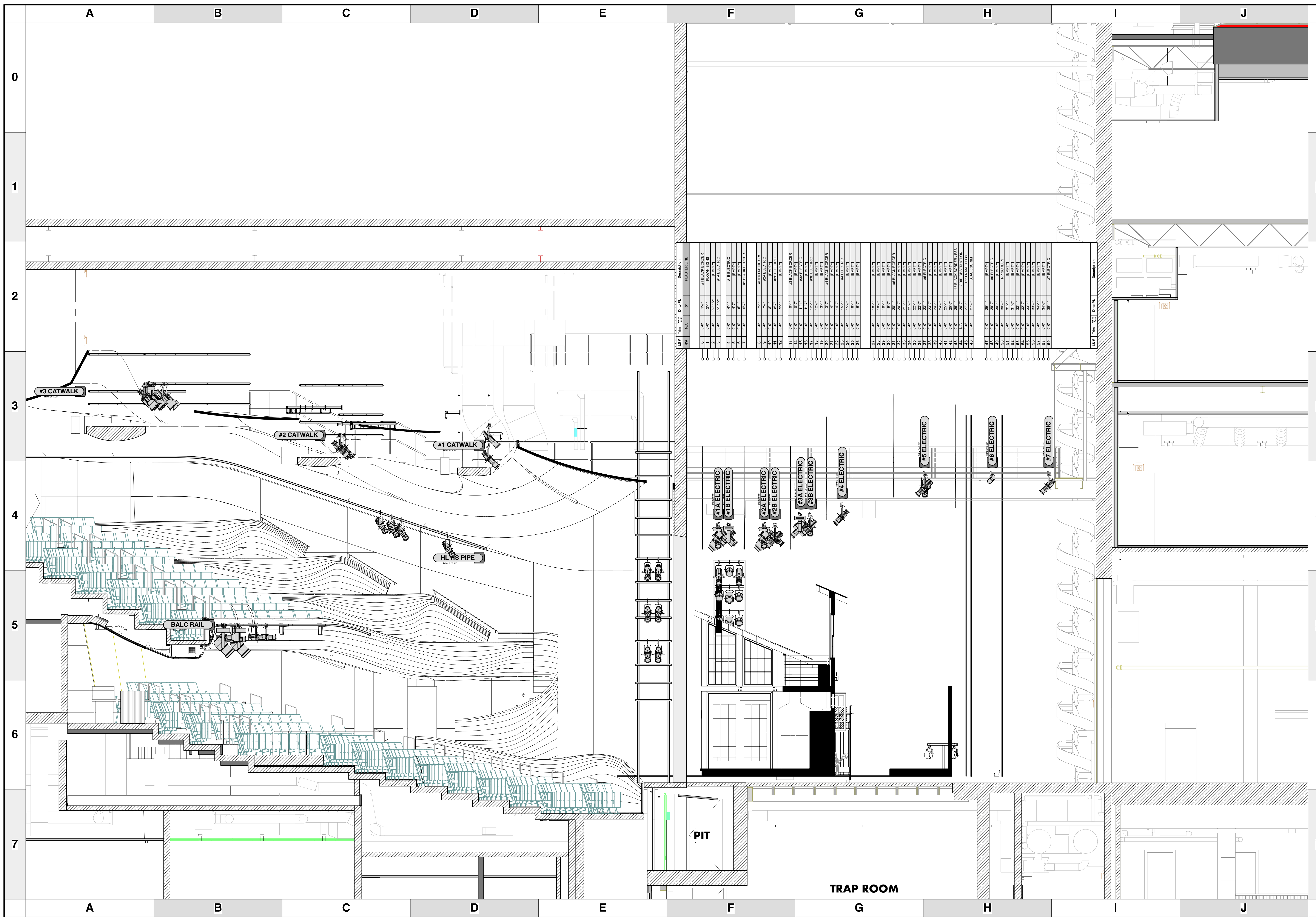
Alliance ATLANTA, GA
 Theatre of the Woodluff
 FEBRUARY/MARCH 2023

SCALE: 3/8" = 1'
 UNLESS OTHERWISE NOTED

PG SIZE: ARCH D

DWG NUMBER: **4** OF 5

LIGHTING PLOT
 DECK & PRACTICALS



KEY TO INSTRUMENTATION

	Martin Mac Ultra Performance	6
	S4 Revolution	3
	Martin Aura	10
	S4-10°	16
	S4-14°	24
	S4-19°	34
	S4-26°	48
	S4-36°	67
	S4-50°	6
	S4 PAR WNSP	2
	S4 PAR NSP	5
	S4 PAR WFL	9
	3° FRES INKIE	2
	S4-14° LED Lustr II	16
	S4-19° LED Lustr II	16
	S4-26° LED Lustr II	9
	S4-36° LED Lustr II	5
	ETC D60 Lustr	31
	ChromaQ Colorforce II 72	10
	Practical	11

LEGEND

ABBREVIATIONS:
 R = Rosco
 G = GAM
 A = Apollo
 LS = Line Set
 GP = Ground Plan
 LX = Electric
 TD = Tech. Direct.
 LD = Lighting Desgr

FOCUS COLOR
 LENS
 TEMPLATE
 UNIT #
 ENGINE TYPE
 CHANNEL #



MW LIGHTING LD# 10574
 www.mwlighting.com
 www.mwlighting.com

REVISION HISTORY

NO.	REVISION	DATE	BY
001	SCENIC LAYOUT / DOC PREP	31 OCT 22	HAF
002	FRES INKIE'S COMPLETED	11 NOV 22	MYW
003	SECTION AIDS	30 NOV 22	HAF
004	2-BLOCK	2 DEC 22	MYW
005	SUBMITAL V2	10 DEC 22	MYW

THE HOT WING KING

PRODUCTION STAFF
 DIRECTOR: KATORI HALL
 LIGHTING DESIGNER: MIKE WOOD
 ASST. LIGHTING DESIGNER: TONI S. STERLING
 PROD. ELEC: RACHAEL BLACKWELL
 SCENIC DESIGN: MICHAEL CARNAHAN

Alliance ATLANTA, GA
 Theatre of the Woodstock
 FEBRUARY-MARCH 2023

SCALE 1/4" = 1'
 UNLESS OTHERWISE NOTED

PG SIZE ARCH D

DWG NUMBER **5** OF 5

LIGHTING PLOT
 SECTION @ CL