

LS #	Trim	D' to PL	Description
46	0-0"	38-9 1/2"	
45	0-0"	38-1 1/2"	
44	0-0"	37-5 1/2"	
43	0-0"	36-9 1/2"	
42	0-0"	36-3 1/2"	
41	0-0"	35-5 1/2"	
40	0-0"	34-9 1/2"	
39	0-0"	33-5 1/2"	
38	0-0"	32-9 1/2"	
37	0-0"	30-9 1/2"	JORCH SHELL R2 - NOT USED
36	0-0"	29-5 1/2"	
35	0-0"	28-9 1/2"	
34	0-0"	28-1 1/2"	
33	0-0"	27-5 1/2"	#4 BLACK BORDER
32	0-0"	26-1 1/2"	
31	0-0"	25-5 1/2"	VIDEO WALL
30	0-0"	24-9 1/2"	VIDEO COVER
29	0-0"	24-1 1/2"	
28	0-0"	23-5 1/2"	#4 ELECTRIC
27	0-0"	22-9 1/2"	#3 BLACK BORDER
26	0-0"	22-1 1/2"	HIGH HURST
25	0-0"	20-9 1/2"	MONTY EYES
24	0-0"	18-9 1/2"	JORCH SHELL R2 - NOT USED
23	0-0"	17-5 1/2"	MONTY I
22	0-0"	16-9 1/2"	PORTRAIT WALL
21	0-0"	16-1 1/2"	SIBELLA
20	0-0"	15-5 1/2"	
19	0-0"	14-9 1/2"	AUSTRIAN CURTAIN
18	0-0"	14-1 1/2"	
17	0-0"	13-5 1/2"	UPSTAGE PORTAL
16	0-0"	12-1 1/2"	#2 BLACK BORDER
15	0-0"	11-5 1/2"	
14	0-0"	10-9 1/2"	#3 ELECTRIC
13	0-0"	10-1 1/2"	
12	0-0"	9-5 1/2"	PRISON LAMPS
11	0-0"	8-9 1/2"	
10	0-0"	8-1 1/2"	#2 ELECTRIC
9	0-0"	6-9 1/2"	JORCH SHELL R1 - NOT USED
8	0-0"	5-5 1/2"	HOUSE PROUL SCREEN
7	0-0"	4-9 1/2"	MIDSTAGE PORTAL
6	0-0"	4-1 1/2"	#1 BLACK BORDER
5	0-0"	3-5 1/2"	HOUSE PROUL SCREEN
4	0-0"	2-9 1/2"	#1B ELECTRIC
3	0-0"	2-1 1/2"	MAIN CURTAIN (NOT USED)
2	0-0"	1-1 1/2"	#1A ELECTRIC
1	0-0"	0-9 1/2"	DOWNSTAGE PORTAL
N/A	N/A	0"	Plaster Line
LS #	Trim	D' to PL	Description

KEY TO INSTRUMENTATION

- ROBE BMFL
- Elation Artiste Picasso
- High End SoloFrame Theatre
- High End SoloSpot 1000
- CHAUVET R2 WASH
- ETC Source-4 10"
- ETC S4-14" LED Tungsten
- ETC S4-19" LED Tungsten
- ETC S4-26" LED Tungsten
- ETC S4-36" LED Tungsten
- ETC S4-50" LED Tungsten
- ETC S4-14" LED Lustr
- ETC S4-19" LED Lustr
- ETC S4-26" LED Lustr
- ETC S4-36" LED Lustr
- ETC S4 Fresnel Lustr
- ETC ColorSource PAR-MR
- ETC ColorSource PAR-WO-
- ETC S4-PAR (MFL)
- ETC ColorSource Linear 4 Deep Blue
- Practical

GENERAL NOTES

- Please have ample R119, R132, and blackwrap available at focus call.
- Please have all color, templates, and accessories framed and loaded prior to focus. See Channel Hoopup and Instrument Schedule for details.
- Please have top hats and barn doors unframed at focus call - all sizes.
- Fixtures hung on 18" centers unless otherwise noted here.

LEGEND

ABBREVIATIONS:
 R = Rosco
 A = Apollo
 LS = Line Set
 GP = Ground Plan
 LX = Tech. Direct.
 LD = Lighting Design

FOCUS COLOR
 FOC CLR
 LENS
 TEMPLATE
 UNIT #
 CHANNEL #

REVISION HISTORY

NO.	REVISION	DATE	BY
A01	SCENIC LAYOUT / DOC PREP	06 JAN 20	MW
A02	SCENIC LAYOUT V2	14 JAN 20	MW
B01	SUBMITTAL / DRAFT 1	28 JAN 20	MW
B02	SHOP PREP / DRAFT 2	05 FEB 20	MW
B03	SHOP PREP / DRAFT 3 / ILS CHANGES	08 FEB 20	MW
C01	LOADS	11 FEB 20	MW
C02	LOADS IN V2 / FRISE LADDER ADDS	18 FEB 20	MW
D000	LOADS IN V3 / ADDRESSING	26 FEB 20	MW

GENTLEMAN'S GUIDE

PRODUCTION STAFF

DIRECTOR BRANDT BLOCKER
 LIGHTING DESIGNER MIKE WOOD
 ASSOC LD/PROGRAMMER DALTON HAMILTON
 ASSOC LIGHTING DSGNR ABBY MAY

PROD. ELEC LUCAS SEVEDGE
 PROD. MANAGER BRIAN FREY

- THE BYERS THEATRE -
 SANDY SPRINGS, GA - MARCH 2020

SCALE 1/4" = 1'
 UNLESS OTHERWISE NOTED

PG SIZE ARCH D

DWG NUMBER
1
 OF 8

LIGHT PLOT
 OVER STAGE



Item	Qty	Part #	Description
1	1	1000000	ROBE BMFL
2	1	1000000	Elation Artiste Picasso
3	1	1000000	High End SoloSpot Theatre
4	1	1000000	High End SoloSpot 1000
5	1	1000000	CHAUVET R2 WASH
6	1	1000000	ETC Source-4 10"
7	1	1000000	ETC S4-14" LED Tungsten
8	1	1000000	ETC S4-19" LED Tungsten
9	1	1000000	ETC S4-26" LED Tungsten
10	1	1000000	ETC S4-36" LED Tungsten
11	1	1000000	ETC S4-50" LED Tungsten
12	1	1000000	ETC S4-14" LED Lustr
13	1	1000000	ETC S4-19" LED Lustr
14	1	1000000	ETC S4-26" LED Lustr
15	1	1000000	ETC S4-36" LED Lustr
16	1	1000000	ETC S4 Fresnel Lustr
17	1	1000000	ETC ColorSource PAR-MR
18	1	1000000	ETC ColorSource PAR-WO-
19	1	1000000	ETC S4-PAR (MFL)
20	1	1000000	ETC ColorSource Linear 4 Deep Blue
21	1	1000000	Practical

KEY TO INSTRUMENTATION

- ROBE BMFL
- Elation Artiste Picasso
- High End SoloSpot Theatre
- High End SoloSpot 1000
- CHAUVET R2 WASH
- ETC Source-4 10"
- ETC S4-14" LED Tungsten
- ETC S4-19" LED Tungsten
- ETC S4-26" LED Tungsten
- ETC S4-36" LED Tungsten
- ETC S4-50" LED Tungsten
- ETC S4-14" LED Lustr
- ETC S4-19" LED Lustr
- ETC S4-26" LED Lustr
- ETC S4-36" LED Lustr
- ETC S4 Fresnel Lustr
- ETC ColorSource PAR-MR
- ETC ColorSource PAR-WO-
- ETC S4-PAR (MFL)
- ETC ColorSource Linear 4 Deep Blue
- Practical

GENERAL NOTES

- Please have ample R119, R132, and blackwrap available at focus call.
- Please have all color, templates, and accessories framed and loaded prior to focus. See Channel Hoopup and Instrument Schedule for details.
- Please have top hats and barn doors unframed at focus call - all sizes.
- Installments hung on 18" centers unless otherwise noted herein.

LEGEND

ABBREVIATIONS:
 R = Rosco
 G = GAM
 A = Apollo
 LS = Line Set
 GP = Ground Plan
 LX = Electric
 TD = Tech. Direct.
 LD = Lighting Design

FOCUS COLOR
 LENS
 TEMPLATE
 UNIT #
 CHANNEL #

REVISION HISTORY

NO.	REVISION	DATE	BY
A01	SCENIC LAYOUT / DOC PREP	06 JAN 20	MW
A02	SCENIC LAYOUT V2	14 JAN 20	MW
B01	SUBMITTAL / DRAFT 1	28 JAN 20	MW
B02	SHOP PREP / DRAFT 2	05 FEB 20	MW
B03	SHOP PREP / DRAFT 3 / LS CHANGES	09 FEB 20	MW
C01	LOADS	13 FEB 20	MW
C02	LOADS IN V2 / FIRE LADDER ADDS	19 FEB 20	MW
D000	LOADS IN V3 / ADDRESSING	26 FEB 20	MW

GENTLEMAN'S GUIDE

PRODUCTION STAFF

DIRECTOR BRANDT BLOCKER
 LIGHTING DESIGNER MIKE WOOD
 ASSOC LD/PROGRAMMER DALTON HAMILTON
 ASSOC LIGHTING DESGNR ABBY MAY

PROD. ELEC LUCAS SEVEDGE
 PROD. MANAGER BRIAN FREY

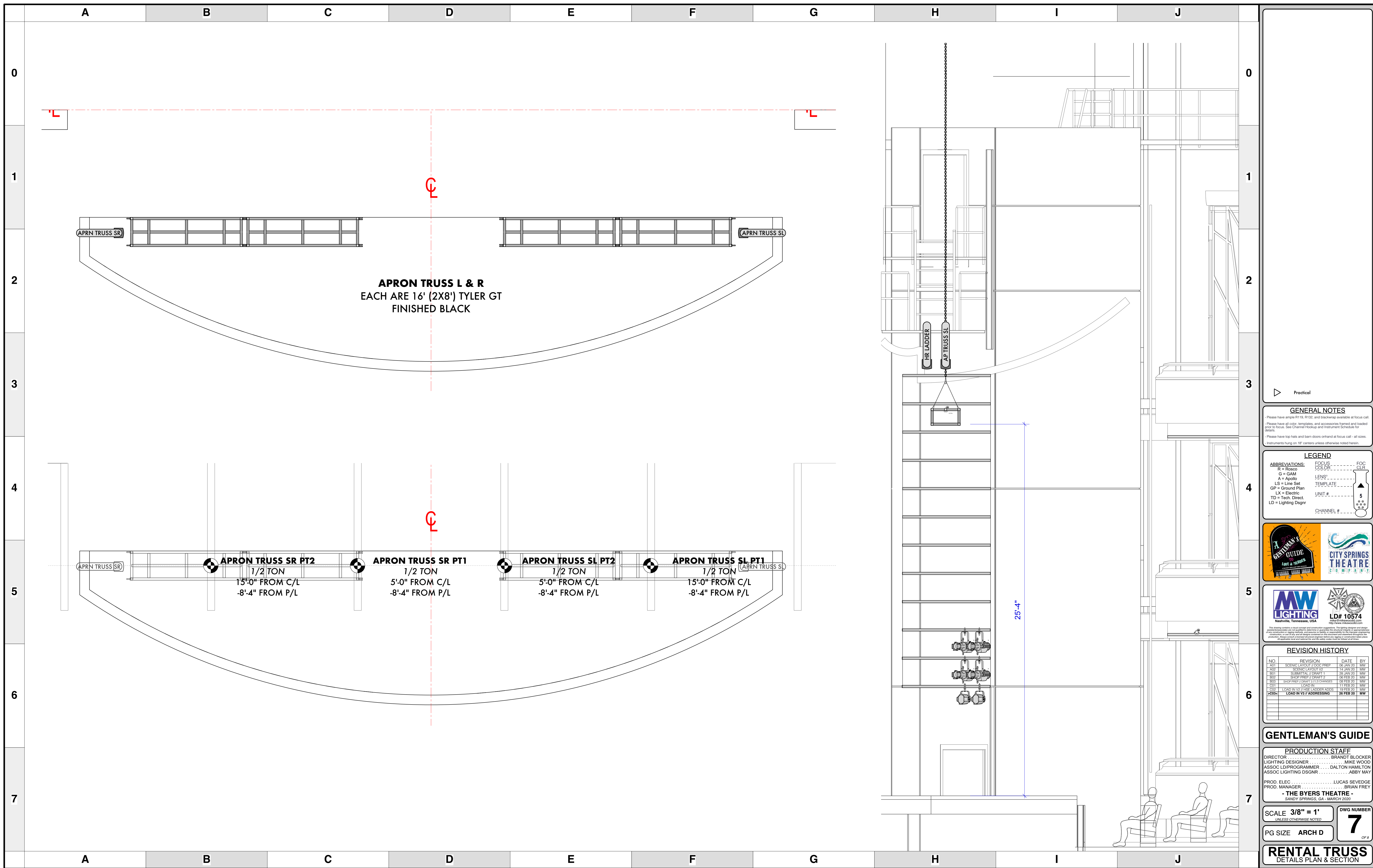
- THE BYERS THEATRE -
 SANDY SPRINGS, GA - MARCH 2020

SCALE 3/16" = 1'0"
 UNLESS OTHERWISE NOTED

PG SIZE ARCH D

DWG NUMBER **8** OF 8

LIGHT PLOT
 SL SECTION THRU CL



APRON TRUSS L & R
EACH ARE 16' (2X8') TYLER GT
FINISHED BLACK

APRON TRUSS SR PT2 1/2 TON
15'-0" FROM C/L
-8'-4" FROM P/L

APRON TRUSS SR PT1 1/2 TON
5'-0" FROM C/L
-8'-4" FROM P/L

APRON TRUSS SL PT2 1/2 TON
5'-0" FROM C/L
-8'-4" FROM P/L

APRON TRUSS SL PT1 1/2 TON
15'-0" FROM C/L
-8'-4" FROM P/L

Practical

GENERAL NOTES
- Please have ample R119, R132, and blackwrap available at focus call.
- Please have all color, templates, and accessories framed and loaded prior to focus. See Channel Hoopup and Instrument Schedule for details.
- Please have top hats and barn doors onhand at focus call - all sizes.
- Instruments hung on 18" centers unless otherwise noted here.

LEGEND

ABBREVIATIONS:
R = Rosco
G = GAM
A = Apollo
LS = Line Set
GP = Ground Plan
TD = Tech. Direct.
LD = Lighting Design

FOCUS COLOR
LENS
TEMPLATE
UNIT #
CHANNEL #



MW LIGHTING
Nashville, Tennessee, USA
LD# 10574
http://www.mwlighting.com

REVISION HISTORY

NO.	REVISION	DATE	BY
A01	SCENIC LAYOUT / DOC PREP	06 JAN 20	MW
A02	SCENIC LAYOUT V2	14 JAN 20	MW
B01	SUBMITTAL / DRAFT 1	28 JAN 20	MW
B02	SHOP PREP / DRAFT 2	02 FEB 20	MW
B03	SHOP PREP / DRAFT 3 / LIS CHANGES	09 FEB 20	MW
C01	LOADS	11 FEB 20	MW
C02	LOADS IN V2 / FIRE LADDER ADDS	19 FEB 20	MW
D000	LOADS IN V3 / ADDRESSING	26 FEB 20	MW

GENTLEMAN'S GUIDE

PRODUCTION STAFF
DIRECTOR BRANDT BLOCKER
LIGHTING DESIGNER MIKE WOOD
ASSOC LD/PROGRAMMER DALTON HAMILTON
ASSOC LIGHTING DESIGNER ABBY MAY

PROD. ELEC LUCAS SEVEDGE
PROD. MANAGER BRIAN FREY

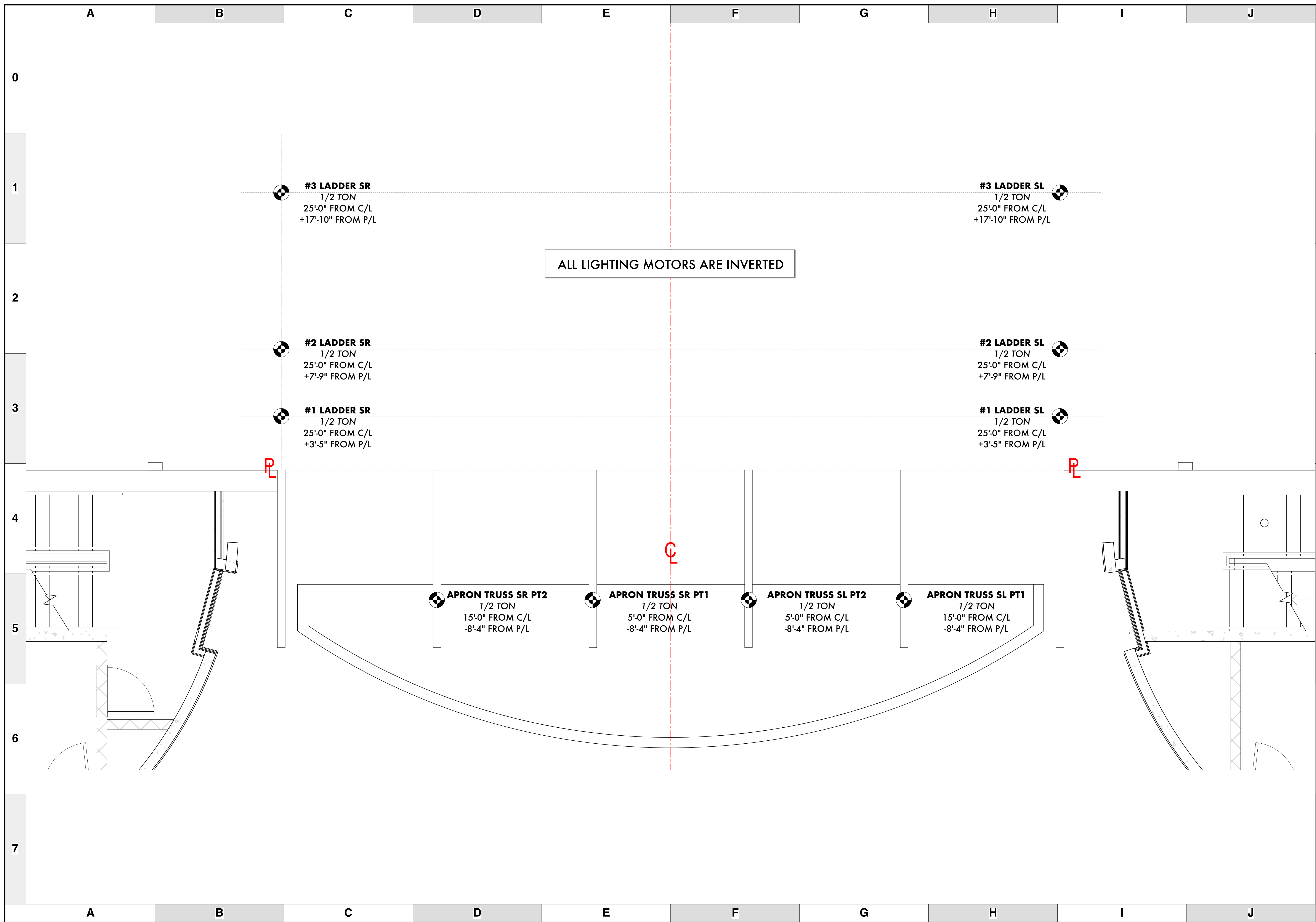
- THE BYERS THEATRE -
SANDY SPRINGS, GA - MARCH 2020

SCALE 3/8" = 1'
UNLESS OTHERWISE NOTED

PG SIZE ARCH D

DWG NUMBER **7** OF 8

RENTAL TRUSS
DETAILS PLAN & SECTION



ALL LIGHTING MOTORS ARE INVERTED

#3 LADDER SR
1/2 TON
25'-0" FROM C/L
+17'-10" FROM P/L

#3 LADDER SL
1/2 TON
25'-0" FROM C/L
+17'-10" FROM P/L

#2 LADDER SR
1/2 TON
25'-0" FROM C/L
+7'-9" FROM P/L

#2 LADDER SL
1/2 TON
25'-0" FROM C/L
+7'-9" FROM P/L

#1 LADDER SR
1/2 TON
25'-0" FROM C/L
+3'-5" FROM P/L

#1 LADDER SL
1/2 TON
25'-0" FROM C/L
+3'-5" FROM P/L

APRON TRUSS SR PT2
1/2 TON
15'-0" FROM C/L
-8'-4" FROM P/L

APRON TRUSS SR PT1
1/2 TON
5'-0" FROM C/L
-8'-4" FROM P/L

APRON TRUSS SL PT2
1/2 TON
5'-0" FROM C/L
-8'-4" FROM P/L

APRON TRUSS SL PT1
1/2 TON
15'-0" FROM C/L
-8'-4" FROM P/L

Practical

GENERAL NOTES

- Please have ample R119, R132, and blacktop available at focus call.
- Please have all color, templates, and accessories framed and loaded prior to focus. See Channel Hoopup and Instrument Schedule for details.
- Please have top hats and barn doors unhooked at focus call - all sizes.
- Instruments hung on 18" centers unless otherwise noted herein.

LEGEND

ABBREVIATIONS: R = Rosco, G = GAM, A = Apollo, LS = Line Set, GP = Ground Plan, LX = Electric, TD = Tech. Direct, LD = Lighting Design

FOCUS COLOR: FOC CLR

LENS: LENS

TEMPLATE: TEMPLATE

UNIT #: UNIT #

CHANNEL #: CHANNEL #

MW LIGHTING
Nashville, Tennessee, USA
LD# 10574

REVISION HISTORY

NO.	REVISION	DATE	BY
A01	SCENIC LAYOUT / DOC PREP	06 JAN 20	MW
A02	SCENIC LAYOUT V2	14 JAN 20	MW
B01	SUBMITTAL / DRAFT 1	28 JAN 20	MW
B02	SHOP PREP / DRAFT 2	02 FEB 20	MW
B03	SHOP PREP / DRAFT 3 / LIS CHANGES	09 FEB 20	MW
C01	LOADS	11 FEB 20	MW
C02	LOADS IN V2 / FIRE LADDER ADDS	19 FEB 20	MW
D001	LOADS IN V3 / ADDRESSING	26 FEB 20	MW

GENTLEMAN'S GUIDE

PRODUCTION STAFF

DIRECTOR: BRANDT BLOCKER
 LIGHTING DESIGNER: MIKE WOOD
 ASSOC LD/PROGRAMMER: DALTON HAMILTON
 ASSOC LIGHTING DSGNR: ABBY MAY

PROD. ELEC: LUCAS SEVEDGE
 PROD. MANAGER: BRIAN FREY

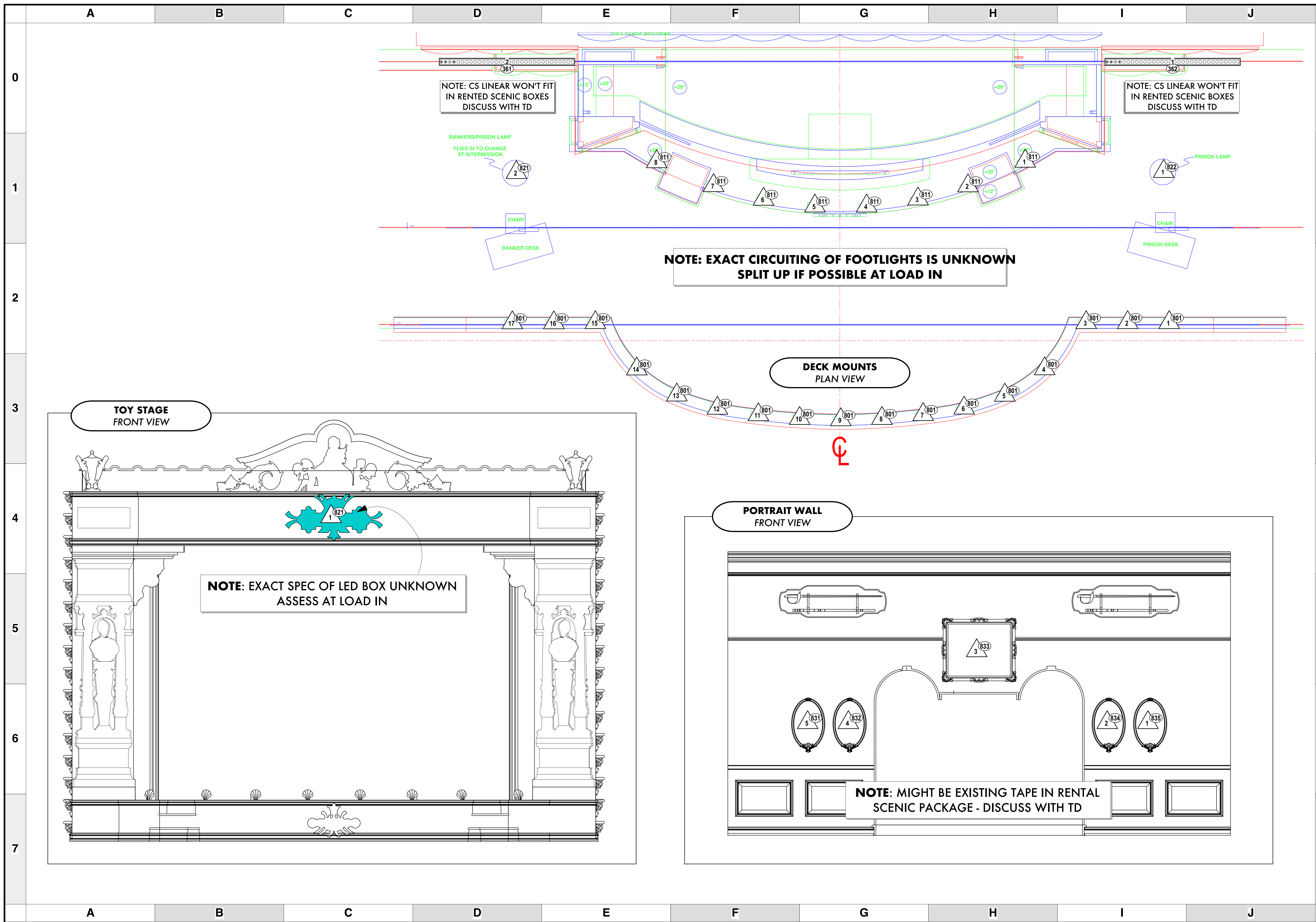
- THE BYERS THEATRE -
SANDY SPRINGS, GA - MARCH 2020

SCALE 3/8" = 1'
UNLESS OTHERWISE NOTED

PG SIZE ARCH D

DWG NUMBER **6** OF 8

RIGGING PLOT
LIGHTING MOTOR POINTS



KEY TO INSTRUMENTATION

- ROBE BMFL
- Elation Artiste Picasso
- High End SoloFrame Theatre
- High End SoloSpot 1000
- CHAUVET R2 WASH
- ETC Source-4 10"
- ETC S4-14" LED Tungsten
- ETC S4-19" LED Tungsten
- ETC S4-26" LED Tungsten
- ETC S4-36" LED Tungsten
- ETC S4-50" LED Tungsten
- ETC S4-14" LED Lustr
- ETC S4-19" LED Lustr
- ETC S4-26" LED Lustr
- ETC S4-36" LED Lustr
- ETC S4 Fresnel Lustr
- ETC ColorSource PAR-MR
- ETC ColorSource PAR-WO-
- ETC S4-PAR (MFL)
- ETC ColorSource Linear 4 Deep Blue
- Practical

GENERAL NOTES

- Please have ample R119, R132, and backdrops available at load call.
- Please have all color, templates, and accessories framed and loaded prior to focus. See Channel Hookup and Instrument Schedule for details.
- Please have top hats and barn doors unframed at focus call - all sizes.
- Instruments hung on 18" centers unless otherwise noted herein.

LEGEND

ABBREVIATIONS: R = Rosco, A = Apollo, LS = Line Set, GP = Ground Plan, LX = Electric, TD = Tech. Direct., LD = Lighting Design.

FOCUS COLOR, LENS, TEMPLATE, UNIT #, CHANNEL #

REVISION HISTORY

NO.	REVISION	DATE	BY
A01	SCENIC LAYOUT / DOC PREP	06 JAN 20	MW
A02	SCENIC LAYOUT V2	14 JAN 20	MW
B01	SUBMITTAL / DRAFT 1	28 JAN 20	MW
B02	SHOP PREP / DRAFT 2	09 FEB 20	MW
B03	SHOP PREP / DRAFT 3 / LIS CHANGES	09 FEB 20	MW
C01	LOAD IN	11 FEB 20	MW
C02	LOAD IN V2 / FIRE LADDER ADDS	19 FEB 20	MW
D001	LOAD IN V3 / ADDRESSING	26 FEB 20	MW

GENTLEMAN'S GUIDE

PRODUCTION STAFF

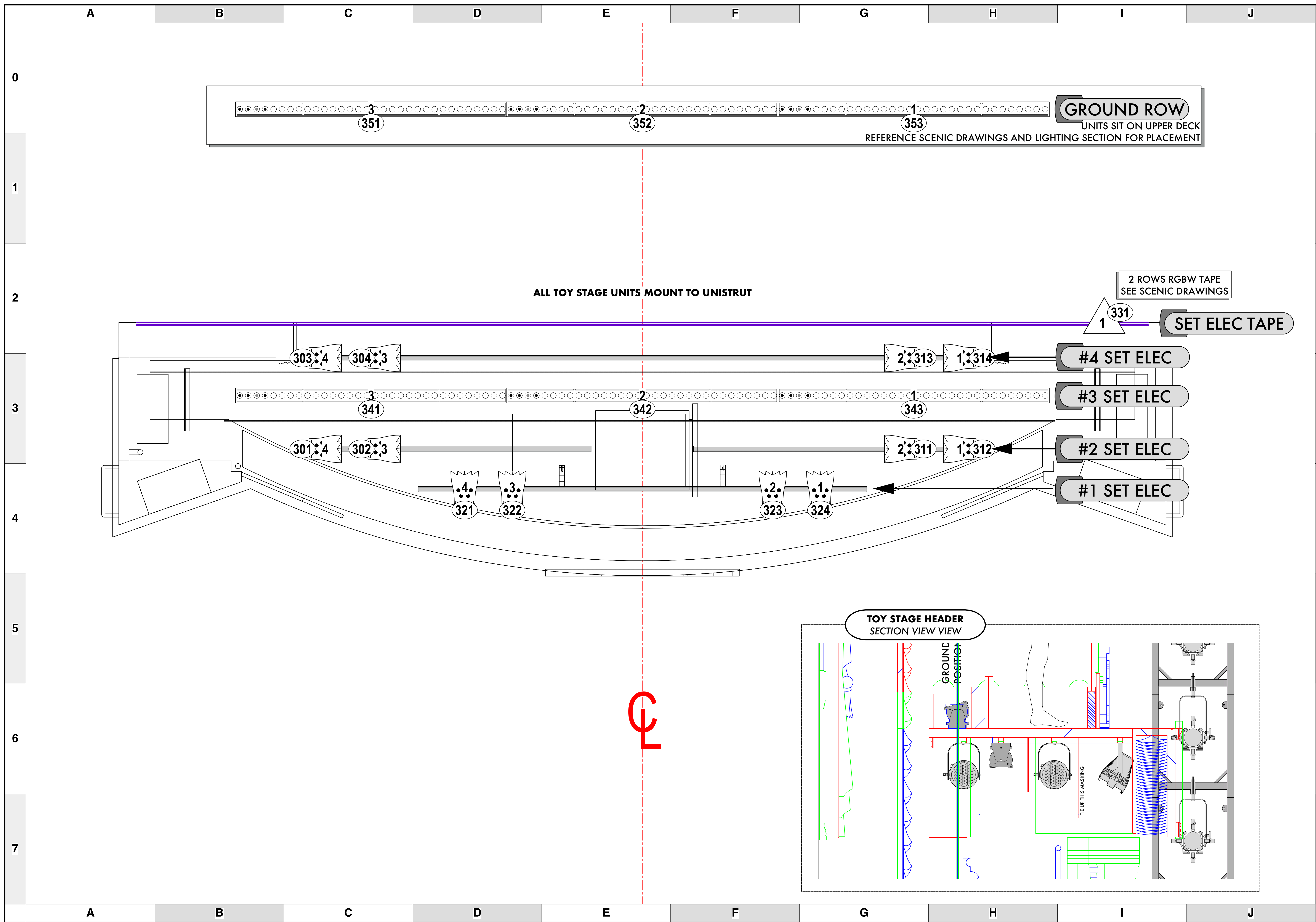
DIRECTOR: BRANDT BLOCKER
 LIGHTING DESIGNER: MIKE WOOD
 ASSOC LD/PROGRAMMER: DALTON HAMILTON
 ASSOC LIGHTING DESIGNER: ABBY MAY

PROD. ELEC: LUCAS SEVEDGE
 PROD. MANAGER: BRIAN FREY

- THE BYERS THEATRE -
 SANDY SPRINGS, GA - MARCH 2020

SCALE 3/8" = 1'
 PG SIZE ARCH D
 DWG NUMBER 5 OF 8

LIGHT PLOT
 SET MOUNTS - TOY STAGE HDR



KEY TO INSTRUMENTATION

- ROBE BMFL
- Elation Artiste Picasso
- High End SoloFrame Theatre
- High End SoloSpot 1000
- CHAUVET R2 WASH
- ETC Source-4 10°
- ETC S4-14° LED Tungsten
- ETC S4-19° LED Tungsten
- ETC S4-26° LED Tungsten
- ETC S4-36° LED Tungsten
- ETC S4-50° LED Tungsten
- ETC S4-14° LED Lustr
- ETC S4-19° LED Lustr
- ETC S4-26° LED Lustr
- ETC S4-36° LED Lustr
- ETC S4 Fresnel Lustr
- ETC ColorSource PAR-MR
- ETC ColorSource PAR-WO
- ETC S4-PAR (MFL)
- ETC ColorSource Linear 4 Deep Blue
- Practical

GENERAL NOTES
 - Please have ample R119, R132, and backdrops available at focus call.
 - Please have all color, templates, and accessories framed and loaded prior to focus. See Channel Hookup and Instrument Schedule for details.
 - Please have top hats and barn doors unframed at focus call - all sizes.
 - Instruments hung on 18" centers unless otherwise noted here.

LEGEND

ABBREVIATIONS:	FOCUS	FOC
R = Rosco	COLOR	CLR
G = GAM	LENS	
A = Apollo	TEMPLATE	
LS = Line Set	UNIT #	
GP = Ground Plan	LD #	
LX = Electric	CHANNEL #	
TD = Tech. Direct.		
LD = Lighting Design		



MW LIGHTING
 Nashville, Tennessee, USA
 LD# 10574
 www.mwlighting.com

REVISION HISTORY

NO.	REVISION	DATE	BY
A01	SCENIC LAYOUT / DOC PREP	06 JAN 20	MW
A02	SCENIC LAYOUT V2	14 JAN 20	MW
B01	SUBMITTAL / DRAFT 1	28 JAN 20	MW
B02	SHOP PREP / DRAFT 2	02 FEB 20	MW
B03	SHOP PREP / DRAFT 3 / LIS CHANGES	09 FEB 20	MW
C01	LOADS	11 FEB 20	MW
C02	LOADS IN V2 / FIRE LADDER ADDS	19 FEB 20	MW
D001	LOADS IN V3 / ADDRESSING	26 FEB 20	MW

GENTLEMAN'S GUIDE

PRODUCTION STAFF
 DIRECTOR BRANDT BLOCKER
 LIGHTING DESIGNER MIKE WOOD
 ASSOC LD/PROGRAMMER DALTON HAMILTON
 ASSOC LIGHTING DSGNR ASBY MAY

PROD. ELEC LUCAS SEVEDGE
 PROD. MANAGER BRIAN FREY

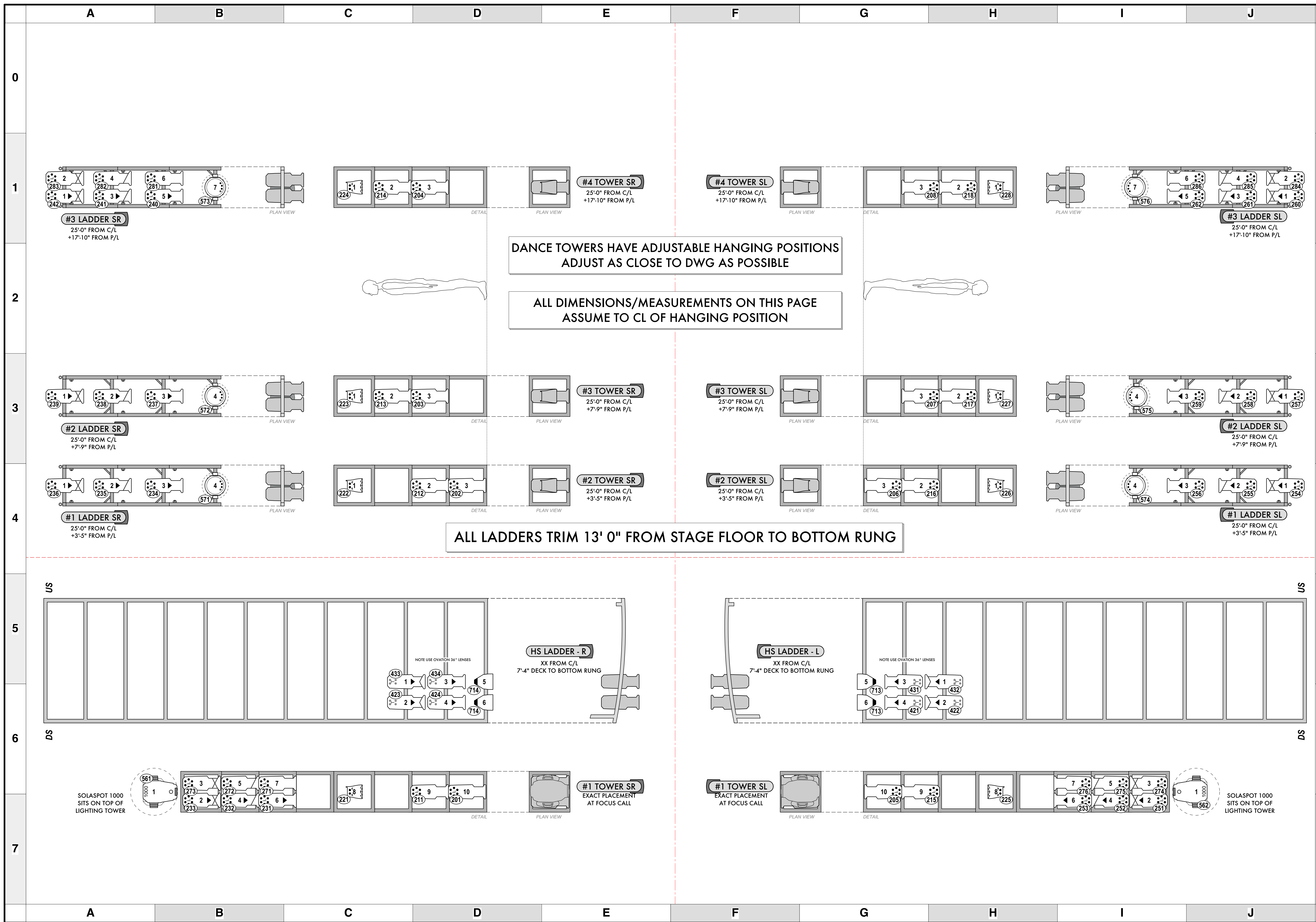
- THE BYERS THEATRE -
 SANDY SPRINGS, GA - MARCH 2020

SCALE 1" = 1'
 UNLESS OTHERWISE NOTED

PG SIZE ARCH D

DWG NUMBER **4** OF 8

LIGHT PLOT
 SET MOUNTS - TOY STAGE HDR



DANCE TOWERS HAVE ADJUSTABLE HANGING POSITIONS
ADJUST AS CLOSE TO DWG AS POSSIBLE

ALL DIMENSIONS/MEASUREMENTS ON THIS PAGE
ASSUME TO CL OF HANGING POSITION

ALL LADDERS TRIM 13' 0" FROM STAGE FLOOR TO BOTTOM RUNG

KEY TO INSTRUMENTATION

- ROBE BMFL
- Elation Artiste Picasso
- High End SoloFrame Theatre
- High End SoloSpot 1000
- CHAUVET R2 WASH
- ETC Source-4 10"
- ETC S4-14" LED Tungsten
- ETC S4-19" LED Tungsten
- ETC S4-26" LED Tungsten
- ETC S4-36" LED Tungsten
- ETC S4-50" LED Tungsten
- ETC S4-14" LED Lustr
- ETC S4-19" LED Lustr
- ETC S4-26" LED Lustr
- ETC S4-36" LED Lustr
- ETC S4 Fresnel Lustr
- ETC ColorSource PAR-MR
- ETC ColorSource PAR-WO
- ETC S4-PAR (MFL)
- ETC ColorSource Linear 4 Deep Blue
- Practical

GENERAL NOTES

- Please have ample R119, R132, and backscaps available at focus call.
- Please have all color, templates, and accessories framed and loaded prior to focus. See Channel Hookup and Instrument Schedule for details.
- Please have top hats and barn doors on hand at focus call - all sizes.
- Instruments hung on 18" centers unless otherwise noted here.

LEGEND

ABBREVIATIONS:
R = Rosco
G = GDM
A = Apollo
LS = Line Set
GP = Ground Plan
LX = Electric
TD = Tech. Direct.
LD = Lighting Design

FOCUS COLOR
LENS
TEMPLATE
UNIT #
CHANNEL #

REVISION HISTORY

NO.	REVISION	DATE	BY
A01	SCENIC LAYOUT / DOC PREP	06 JAN 20	MW
A02	SCENIC LAYOUT V2	14 JAN 20	MW
B01	SUBMITTAL / DRAFT 1	28 JAN 20	MW
B02	SHOP PREP / DRAFT 2	10 FEB 20	MW
B03	SHOP PREP / DRAFT 3 / LIS CHANGES	09 FEB 20	MW
C01	LOADS	11 FEB 20	MW
C02	LOADS IN V2 / FINE LADDER ADDS	19 FEB 20	MW
C03	LOADS IN V3 / ADDRESSING	26 FEB 20	MW

GENTLEMAN'S GUIDE

PRODUCTION STAFF

DIRECTOR BRANDT BLOCKER
LIGHTING DESIGNER MIKE WOOD
ASSOC LD/PROGRAMMER DALTON HAMILTON
ASSOC LIGHTING DESIGNER ABBY MAY

PROD. ELEC LUCAS SEVEDGE
PROD. MANAGER BRIAN FREY

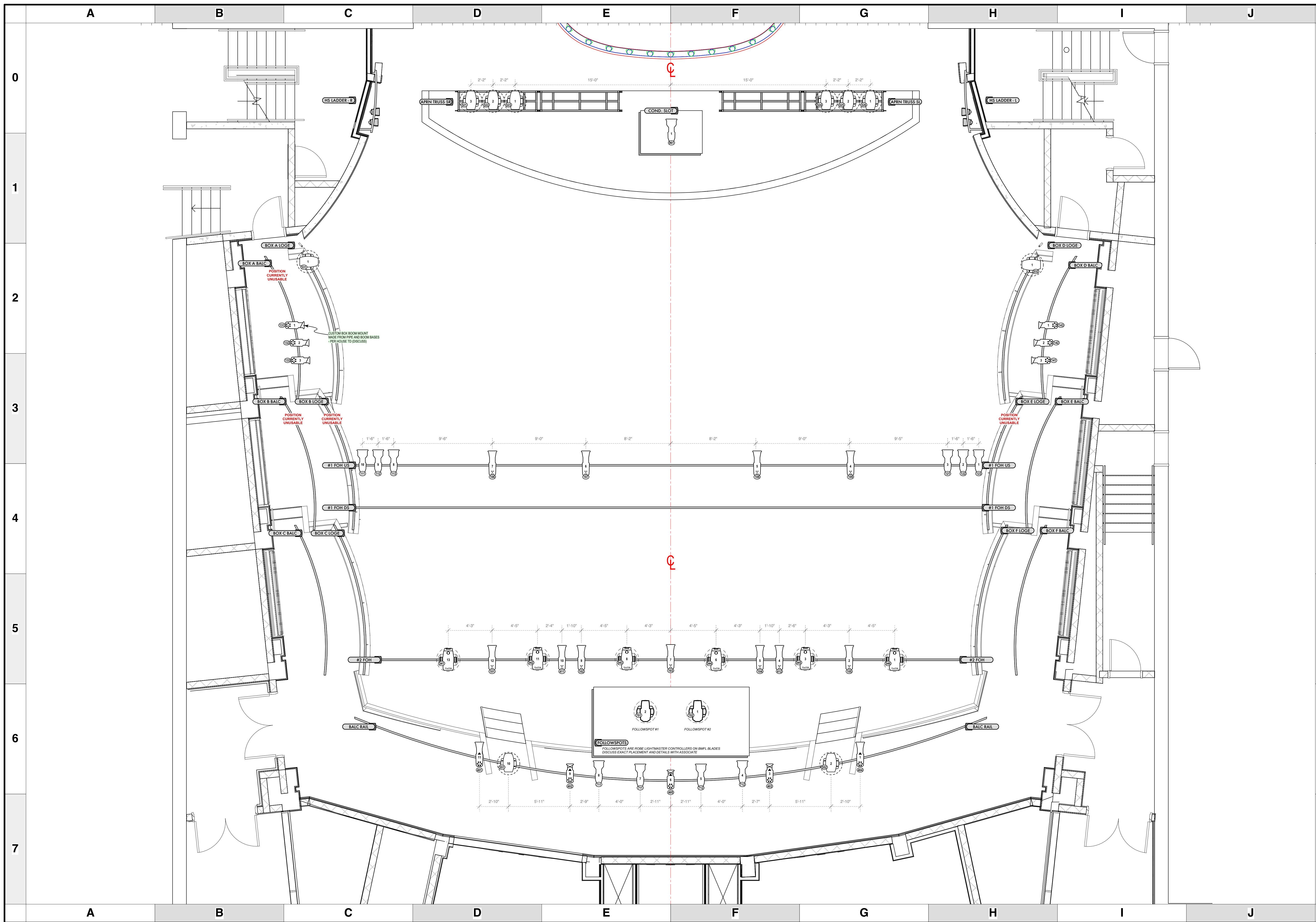
- THE BYERS THEATRE -
SANDY SPRINGS, GA - MARCH 2020

SCALE 1/2" = 1'
UNLESS OTHERWISE NOTED

PG SIZE ARCH D

DWG NUMBER **3** OF 8

LIGHT PLOT
SIDE LIGHT



KEY TO INSTRUMENTATION

- ROBE BMFL
- Elation Artiste Picasso
- High End SoloFrame Theatre
- High End SoloSpot 1000
- CHAUVET R2 WASH
- ETC Source-4 10°
- ETC S4-14° LED Tungsten
- ETC S4-19° LED Tungsten
- ETC S4-26° LED Tungsten
- ETC S4-36° LED Tungsten
- ETC S4-50° LED Tungsten
- ETC S4-14° LED Lustr
- ETC S4-19° LED Lustr
- ETC S4-26° LED Lustr
- ETC S4-36° LED Lustr
- ETC S4 Fresnel Lustr
- ETC ColorSource PAR-MR
- ETC ColorSource PAR-WO
- ETC S4-PAR (MFL)
- ETC ColorSource Linear 4 Deep Blue
- Practical

GENERAL NOTES

- Please have ample R119, R132, and blackwrap available at focus call.
- Please have all color, templates, and accessories framed and loaded prior to focus. See Channel Hookup and Instrument Schedule for details.
- Please have top hats and barn doors onhand at focus call - all sizes.
- Instruments hung on 18" centers unless otherwise noted herein.

LEGEND

ABBREVIATIONS: R = Rosco, G = GAM, A = Apollo, LS = Line Set, GP = Ground Plan, LX = Electric, TD = Tech. Direct, LD = Lighting Design

FOCUS COLOR: FOC CLR

LENS: LENS

TEMPLATE: TEMPLATE

UNIT #: UNIT #

CHANNEL #: CHANNEL #



MW LIGHTING
Nashville, Tennessee, USA

LD# 10574
http://www.mwlighting.com

No liability is assumed for errors or omissions. The user of this document is responsible for the accuracy of the information provided. The user of this document is responsible for the accuracy of the information provided. The user of this document is responsible for the accuracy of the information provided.

REVISION HISTORY

NO.	REVISION	DATE	BY
A01	SCENIC LAYOUT / DOC PREP	06 JAN 20	MW
A02	SCENIC LAYOUT #2	14 JAN 20	MW
B01	SUBMITTAL / DRAFT 1	28 JAN 20	MW
B02	SHOP PREP / DRAFT 2	02 FEB 20	MW
B03	SHOP PREP / DRAFT 3 / LIS CHANGES	09 FEB 20	MW
C01	LOADS	11 FEB 20	MW
C02	LOADS IN V2 / FIRE LADDER ADDS	19 FEB 20	MW
LD001	LOAD IN V3 / ADDRESSING	26 FEB 20	MW

GENTLEMAN'S GUIDE

PRODUCTION STAFF

DIRECTOR BRANDT BLOCKER
 LIGHTING DESIGNER MIKE WOOD
 ASSOC LD/PROGRAMMER DALTON HAMILTON
 ASSOC LIGHTING DESIGNER ASBY MAY

PROD. ELEC LUCAS SEVEDGE
 PROD. MANAGER BRIAN FREY

- THE BYERS THEATRE -
 SANDY SPRINGS, GA - MARCH 2020

SCALE 1/4" = 1'
UNLESS OTHERWISE NOTED

PG SIZE ARCH D

DWG NUMBER **2**
OF 8

LIGHT PLOT
FOH