

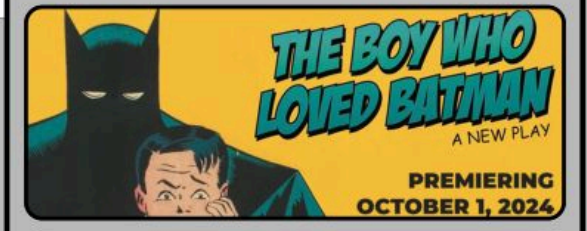
KEY TO INSTRUMENTATION

	SolaFrame Theatre	6
	Robe Spider	5
	ETC S4-19° Lustr S2	4
	ETC S4-26° Lustr S2	20
	ETC S4-36° Lustr S2	13
	ETC S4-50° Lustr S2	4
	ETC Source-4 19°	30
	ETC Source 4 26°	69
	ETC Source-4 36°	33
	ETC Source-4 50°	11

LEGEND

ABBREVIATIONS:
 R = Rosco
 G = GAM
 A = Apollo
 LS = Line Set
 GP = Ground Plan
 LX = Electric
 TD = Tech. Direct.
 LD = Lighting Design

FOCUS COLOR
 LENS
 TEMPLATE
 UNIT #
 ENGINE TYPE
 CHANNEL #



MW LIGHTING LD# 10574
 www.mwlighting.com

REVISION HISTORY

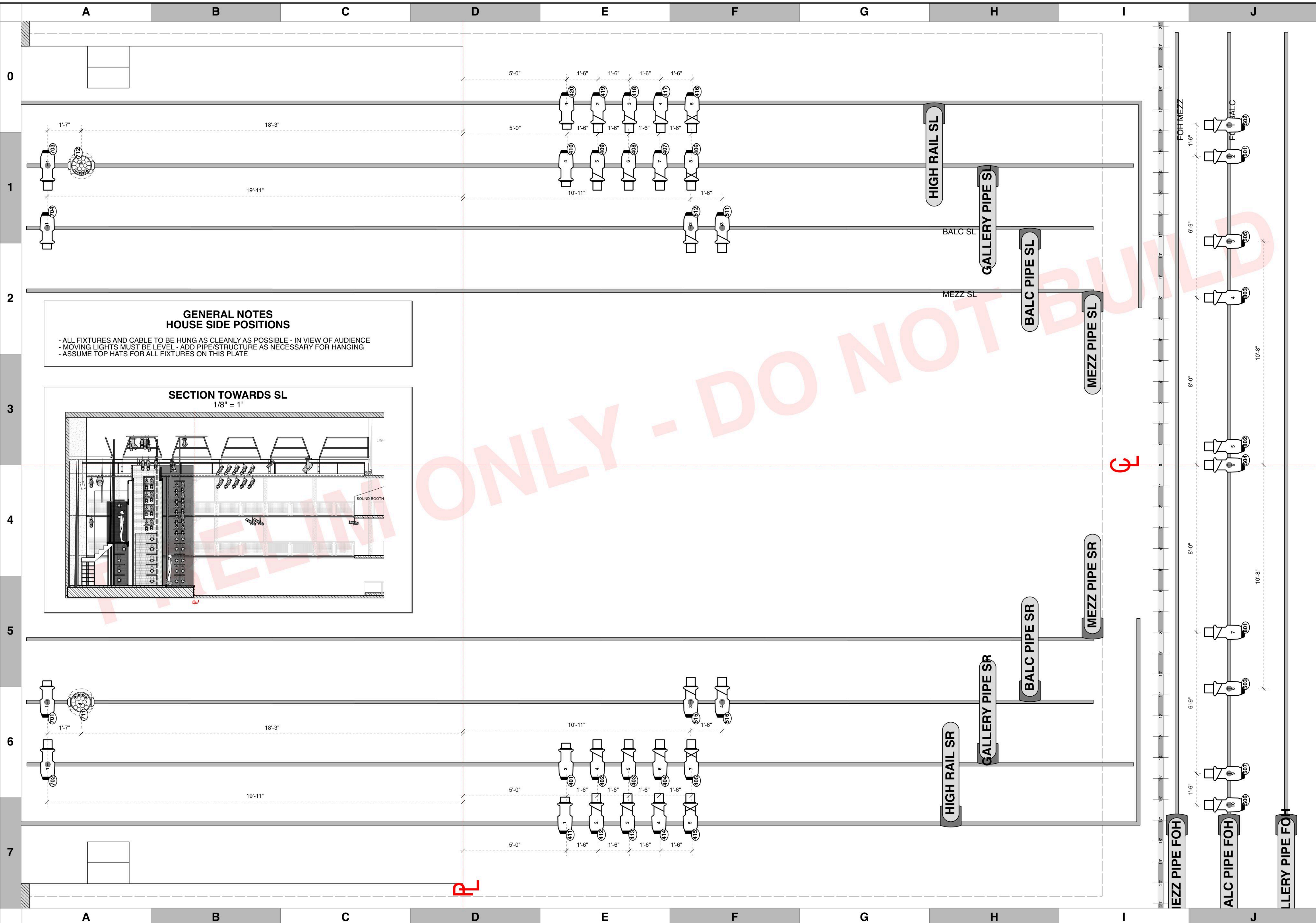
NO.	REVISION	DATE	BY
A01	SET LX SHOP BUILD	7/15/24	MTW
A02	PRELIM RELEASE - ROUGHS	8/1/24	MTW
A03	PRELIM RELEASE	8/15/24	MTW
A04	PRELIM REVISIONS v1	8/15/24	MTW
B01	SHOP PREP	8/20/24	MTW

THE BOY WHO LOVED BATMAN

PRODUCTION STAFF
 DIRECTOR: JEFF CALHOUN
 LIGHTING DESIGNER: MIKE WOOD
 SCENIC DESIGNER: DANIEL ALLEN
 ASST LD: MACK SCALES
 PROGRAMMER: DALTON HAMILTON
 PROD ELEC: REUBEN HIRSH
 PROJECTION DESIGNER: CAITE HEWNER
 JAEB THEATRE
 STRAZ CENTER, TAMPA FL

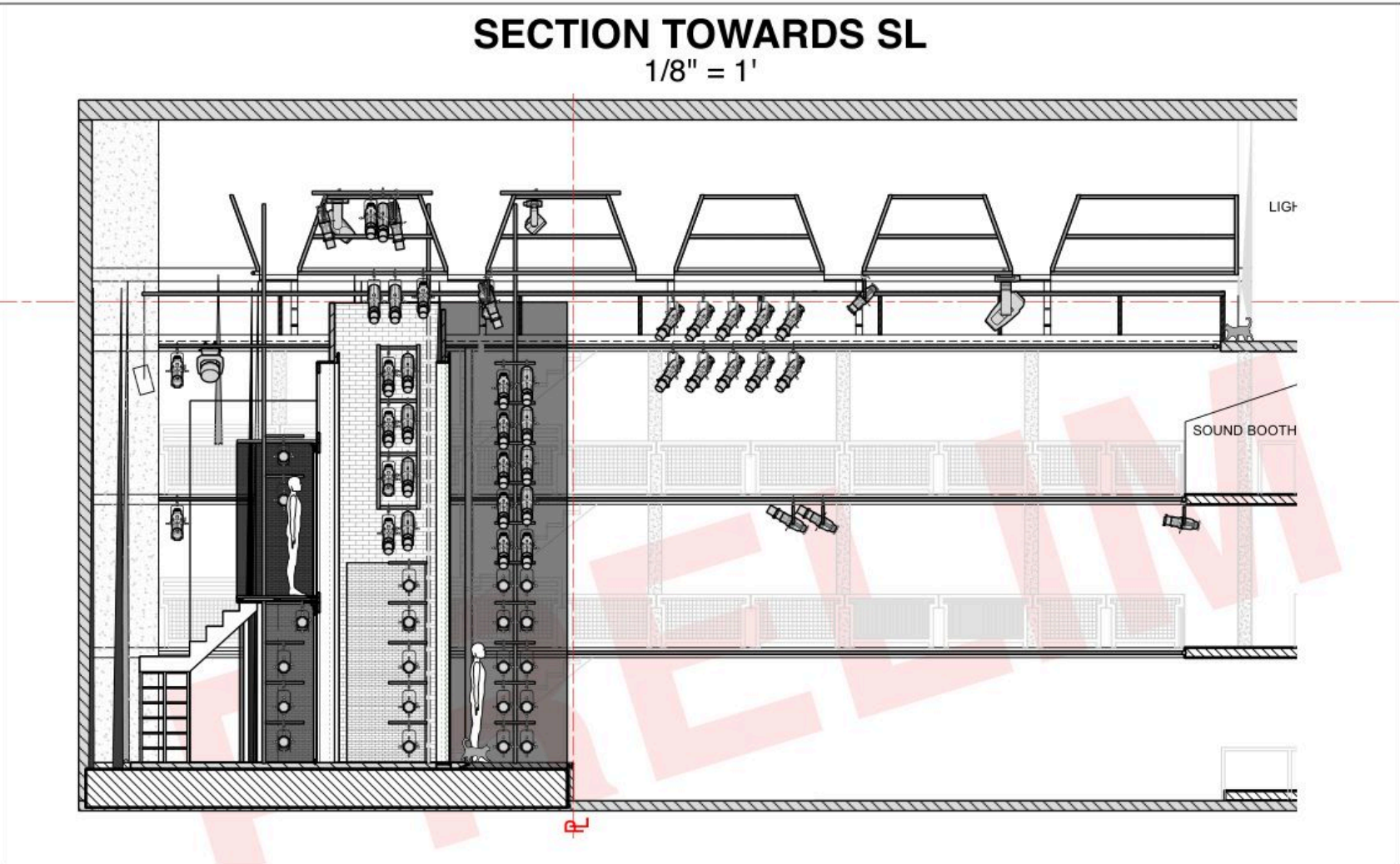
SCALE 1/2" = 1'
 PG SIZE ARCH D
 DWG NUMBER **L01**

LIGHT PLOT - OVERHEAD
 OVERSTAGE HANG



**GENERAL NOTES
HOUSE SIDE POSITIONS**

- ALL FIXTURES AND CABLE TO BE HUNG AS CLEANLY AS POSSIBLE - IN VIEW OF AUDIENCE
- MOVING LIGHTS MUST BE LEVEL - ADD PIPE/STRUCTURE AS NECESSARY FOR HANGING
- ASSUME TOP HATS FOR ALL FIXTURES ON THIS PLATE



KEY TO INSTRUMENTATION

	SolaFrame Theatre	6
	Robe Spider	5
	ETC S4-19° Lustr S2	4
	ETC S4-26° Lustr S2	20
	ETC S4-36° Lustr S2	13
	ETC S4-50° Lustr S2	4
	ETC Source-4 19°	30
	ETC Source 4 26°	69
	ETC Source-4 36°	33
	ETC Source-4 50°	11

LEGEND

ABBREVIATIONS:
R = Rosco
A = Apollo
G = GAM
LS = Line Set
GP = Ground Plan
LX = Electric
TD = Tech. Direct.
LD = Lighting Design

FOCUS COLOR
LENS
TEMPLATE
UNIT #
ENGINE TYPE
CHANNEL #



MW LIGHTING
LD# 10574
www.mwlighting.com

REVISION HISTORY

NO.	REVISION	DATE	BY
A01	SET LX SHOP BUILD	7/15/24	MTW
A02	PRELIM RELEASE - ROUGHS	8/15/24	MTW
A03	PRELIM RELEASE	8/15/24	MTW
A04	PRELIM REVISIONS v1	8/15/24	MTW
B01	SHOP PREP	8/20/24	MTW

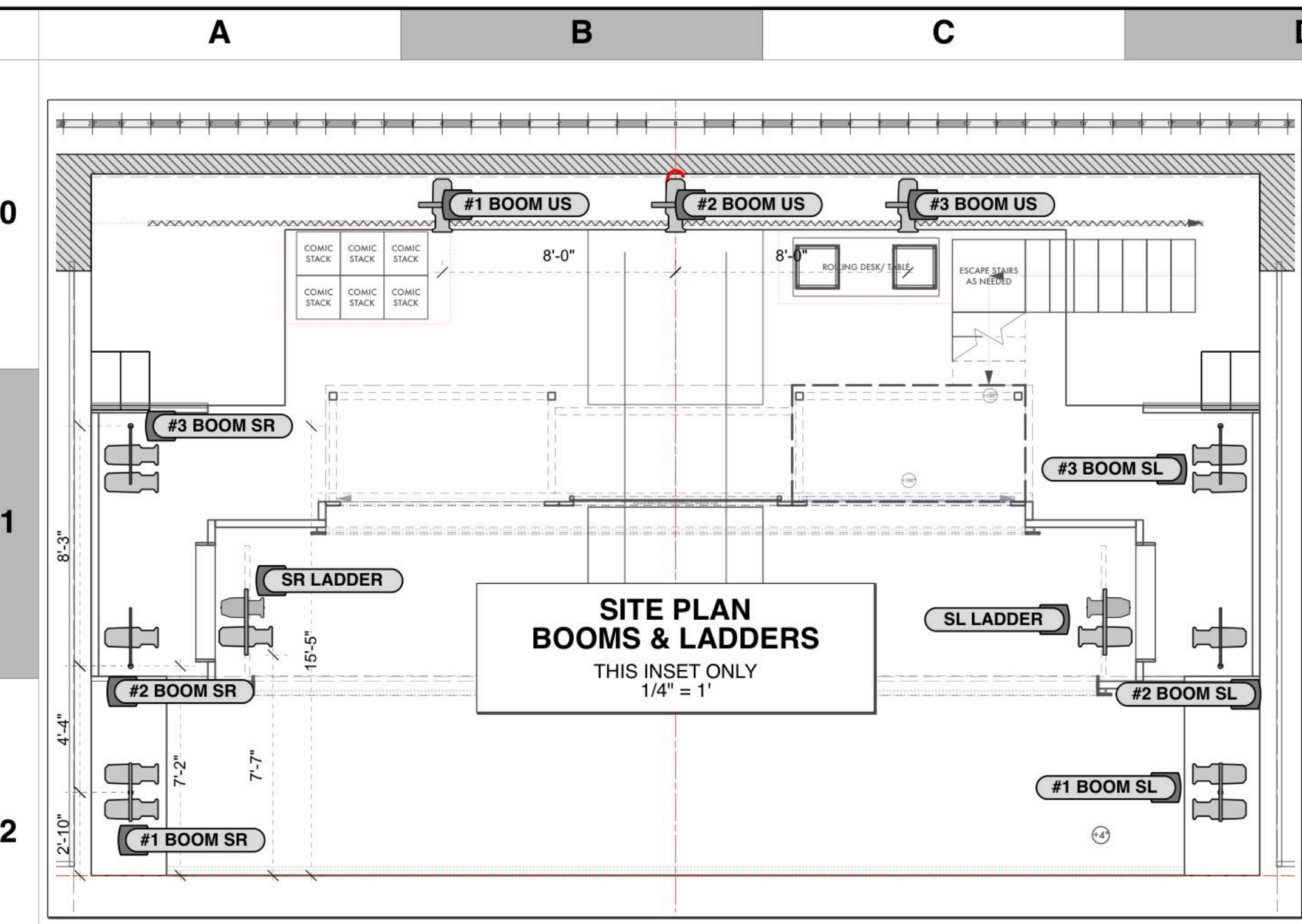
THE BOY WHO LOVED BATMAN

PRODUCTION STAFF
 DIRECTOR: JEFF CALHOUN
 LIGHTING DESIGNER: MIKE WOOD
 SCENIC DESIGNER: DANIEL ALLEN
 ASST. LD: MACK SCALES
 PROGRAMMER: DALTON HAMILTON
 PROD. ELEC: REUBEN HIRSH
 PROJECTION DESIGNER: CAITE HEWNER

JAEB THEATRE
STRAZ CENTER, TAMPA FL

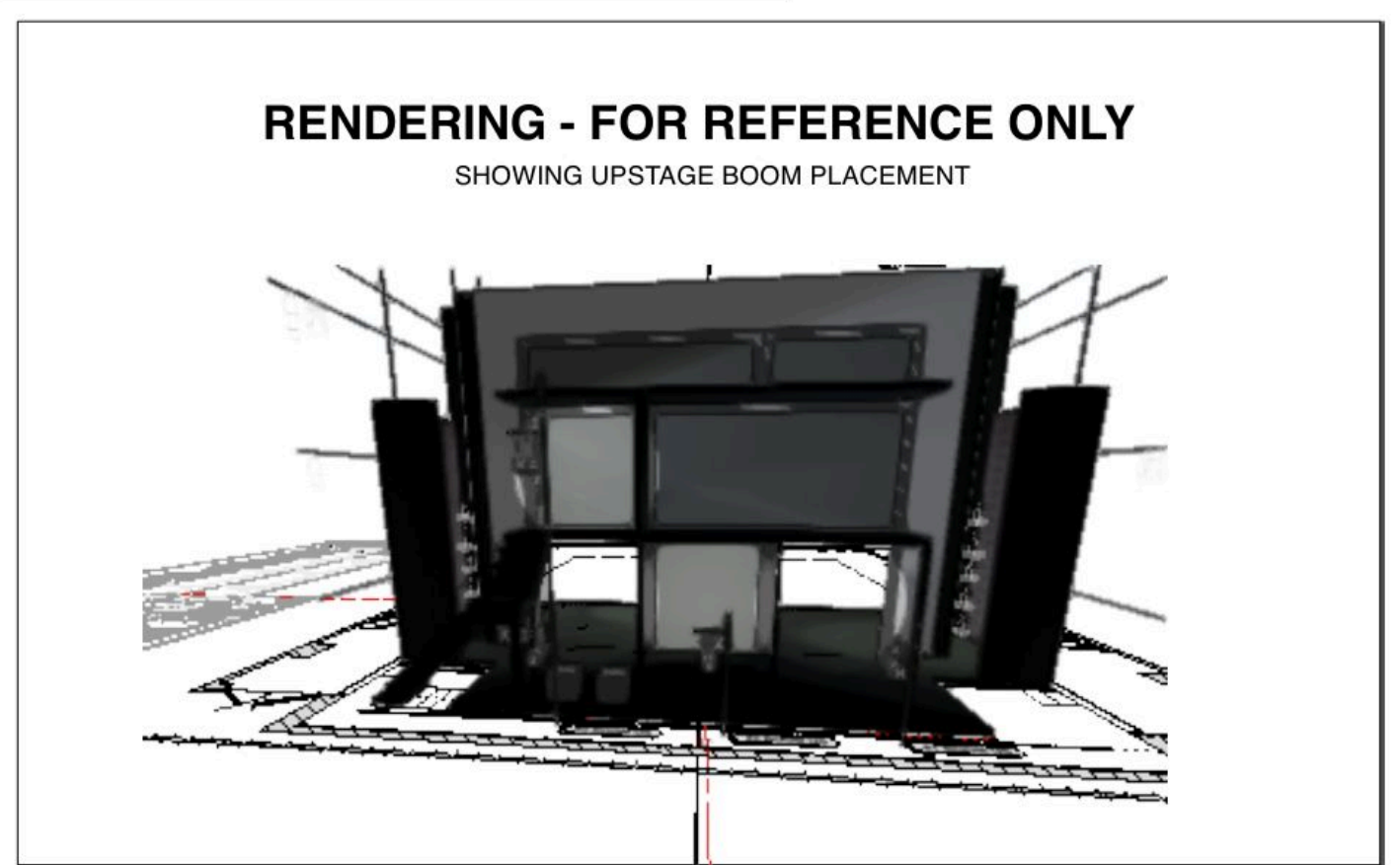
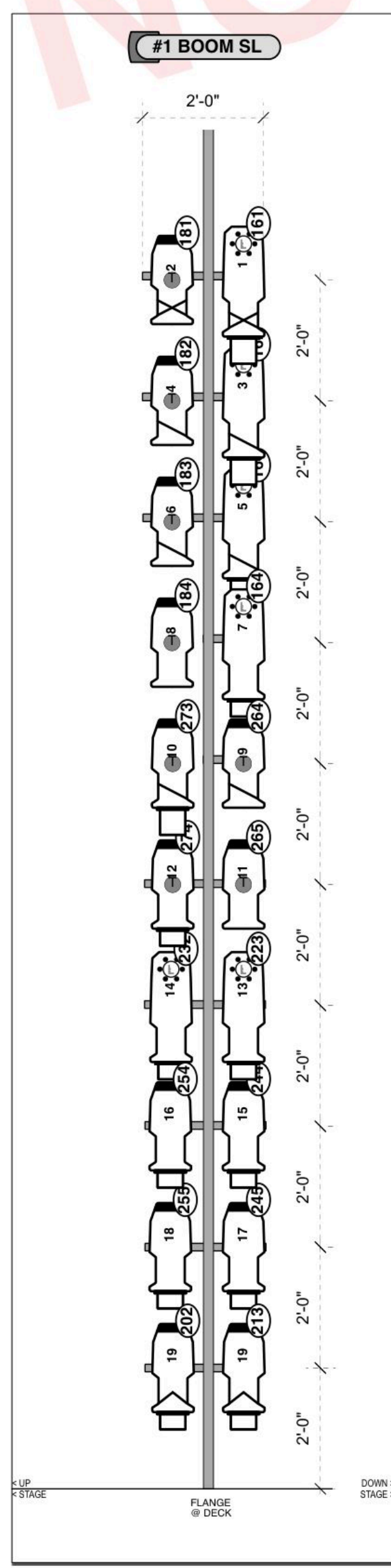
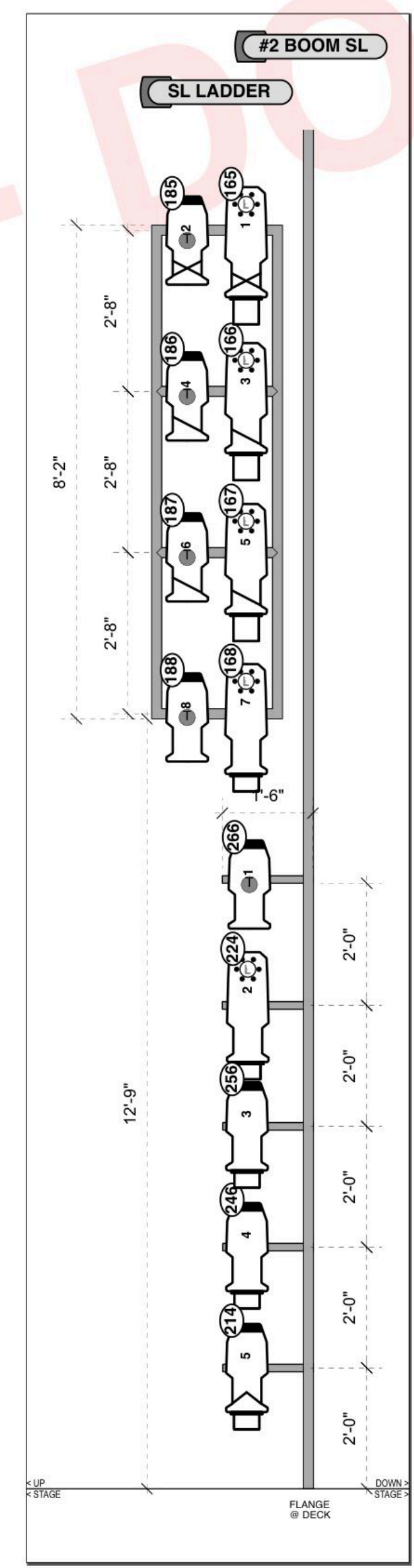
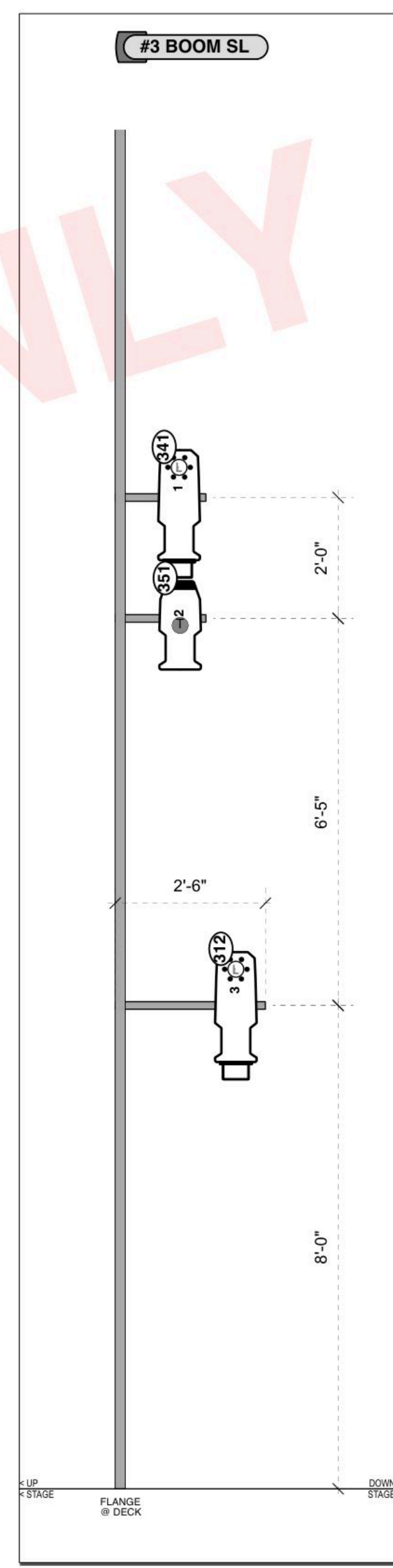
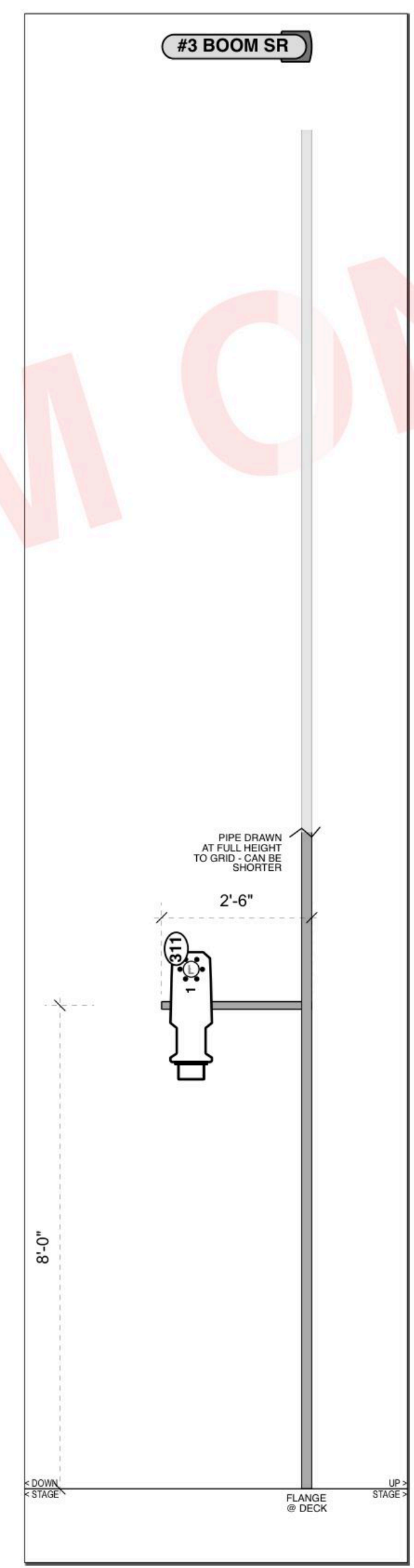
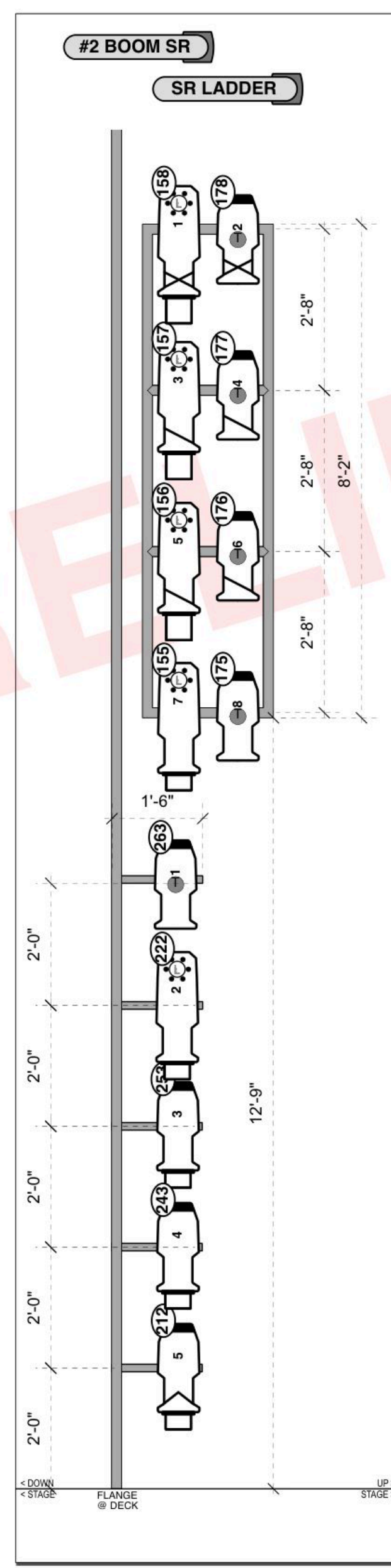
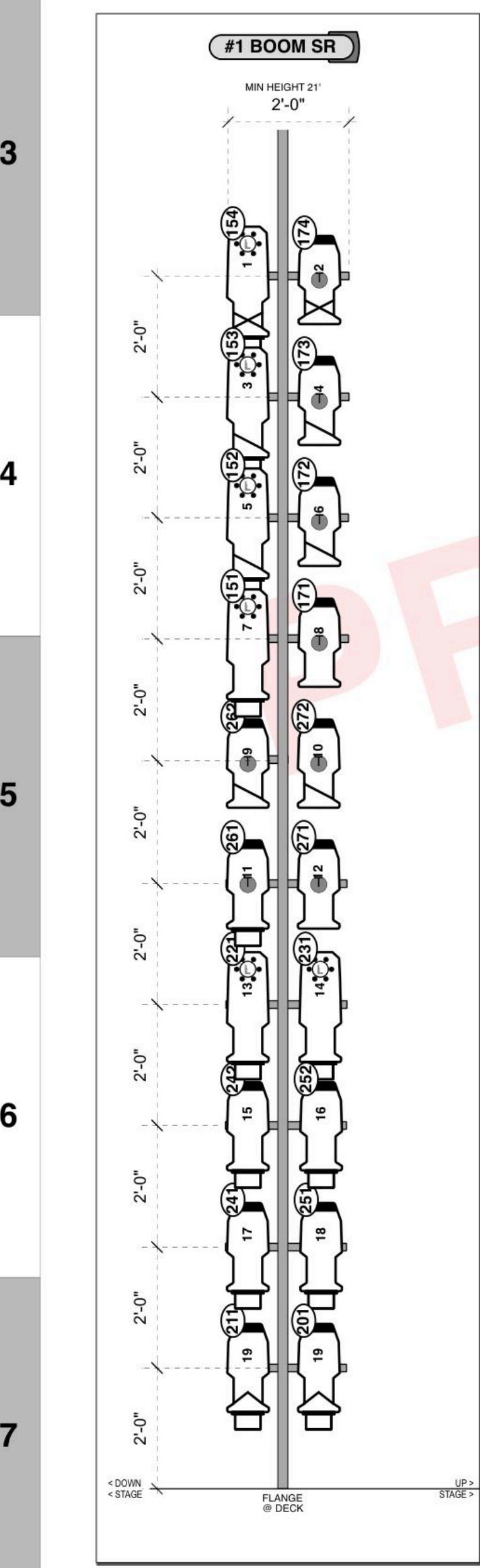
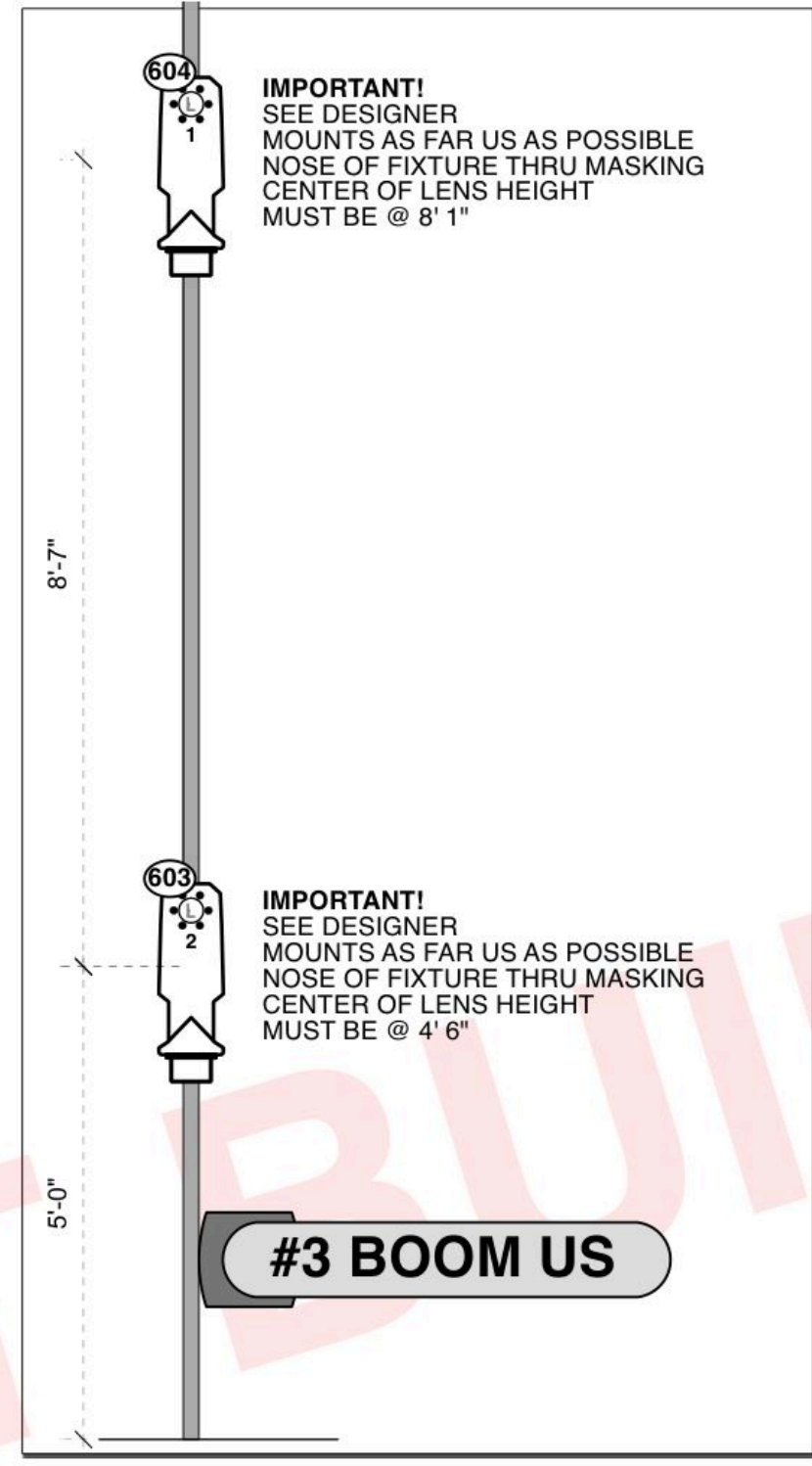
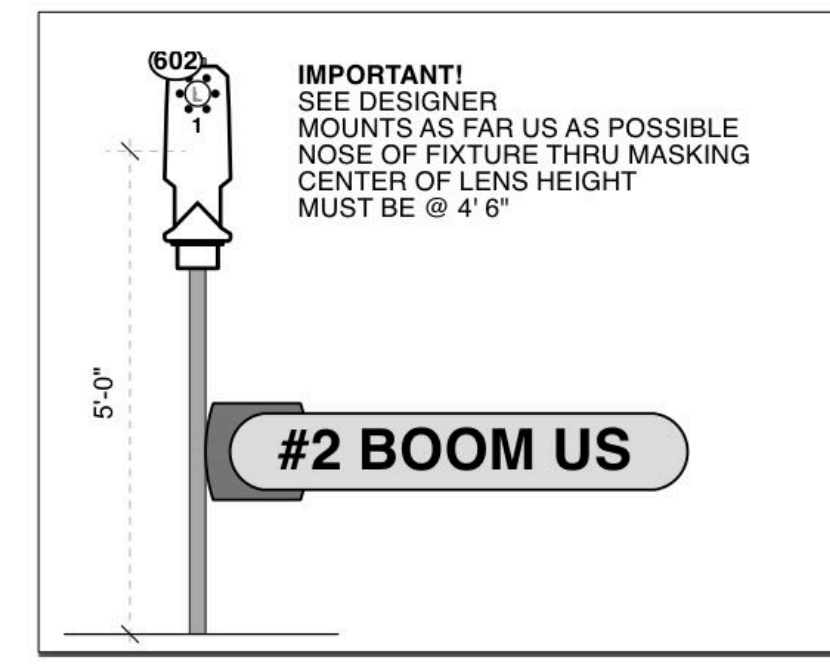
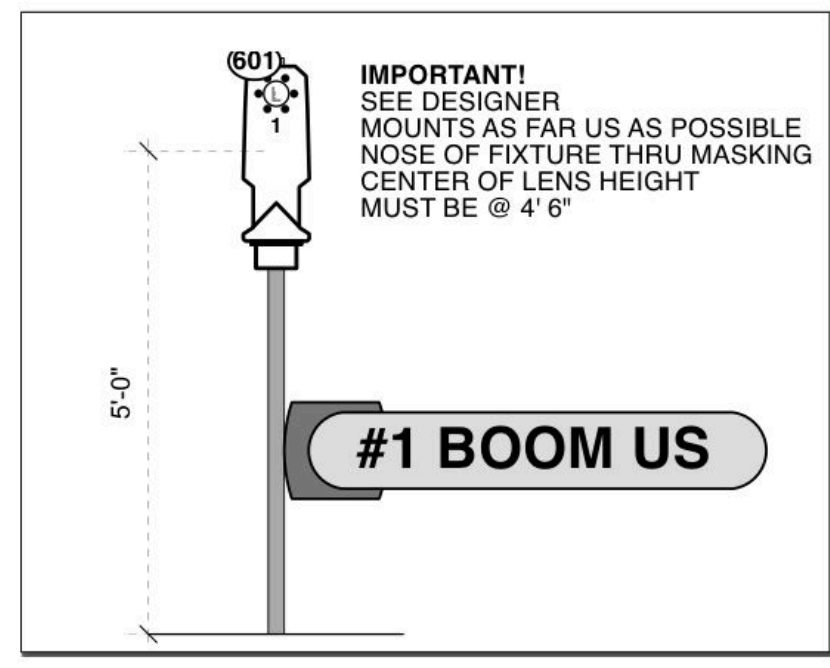
SCALE 1/2" = 1'
PG SIZE ARCH D
DWG NUMBER **L02**

**LIGHT PLOT - SIDES
HOUSE PIPES**



**GENERAL NOTES
BOOMS & LADDERS**

- ALL PIPE TO BE FINISHED OR PAINTED FLAT BLACK
- PREFERENCE IS FOR ALL CROSSBARS TO BE PIPE, BUT SIDEARMS ARE ACCEPTABLE IF NECESSARY
- NO SIDE MOUNTING/YOKING - ALL FIXTURES MUST HANG DOWN
- LADDERS CAN BE STOCK, ADJUST TO MATCH DIMENSIONS AS CLOSELY AS POSSIBLE
- ALL CABLE TO BE DRESSED CLEANLY - BOOMS ARE IN VIEW OF AUDIENCE
- NO BOOM BASES ON GROUND - FLANGES ONLY
- **ALL BOOM LUSTR UNITS MUST BE SHORT-YOKED**
- BOOMS ARE DRAWN TO GO FROM FLOOR TO OVERHEAD GRID - CAN BE SHORTER IF NECESSARY
- LADDER RIGGING PER PRODUCTION CARPENTER & ELECTRICIAN



KEY TO INSTRUMENTATION

	SolaFrame Theatre	6
	Robe Spider	5
	ETC S4-19\" Lustr S2	4
	ETC S4-26\" Lustr S2	20
	ETC S4-36\" Lustr S2	13
	ETC S4-50\" Lustr S2	4
	ETC Source-4 19\"	30
	ETC Source 4 26\"	69
	ETC Source-4 36\"	33
	ETC Source-4 50\"	11

LEGEND

ABBREVIATIONS:	FOCUS	—	FOC
R = Rosco	COLOR	—	CLR
A = Apollo	LENS	—	
G = GAM	TEMPLATE	—	
LS = Line Set	UNIT	—	5
GP = Ground Plan	ENGINE TYPE	—	
LX = Electric	CHANNEL #	—	
TD = Tech. Direct.			
LD = Lighting Design			



MW LIGHTING LD# 10574
www.mwlighting.com

REVISION HISTORY

NO.	REVISION	DATE	BY
AB1	SET LX SHOP BUILD	7/15/24	MTW
AB2	PRELIM RELEASE - ROUGHS	8/15/24	MTW
AB3	PRELIM RELEASE	8/15/24	MTW
AB4	PRELIM REVISIONS v1	8/15/24	MTW
BB1	SHOP PREP	8/20/24	MTW

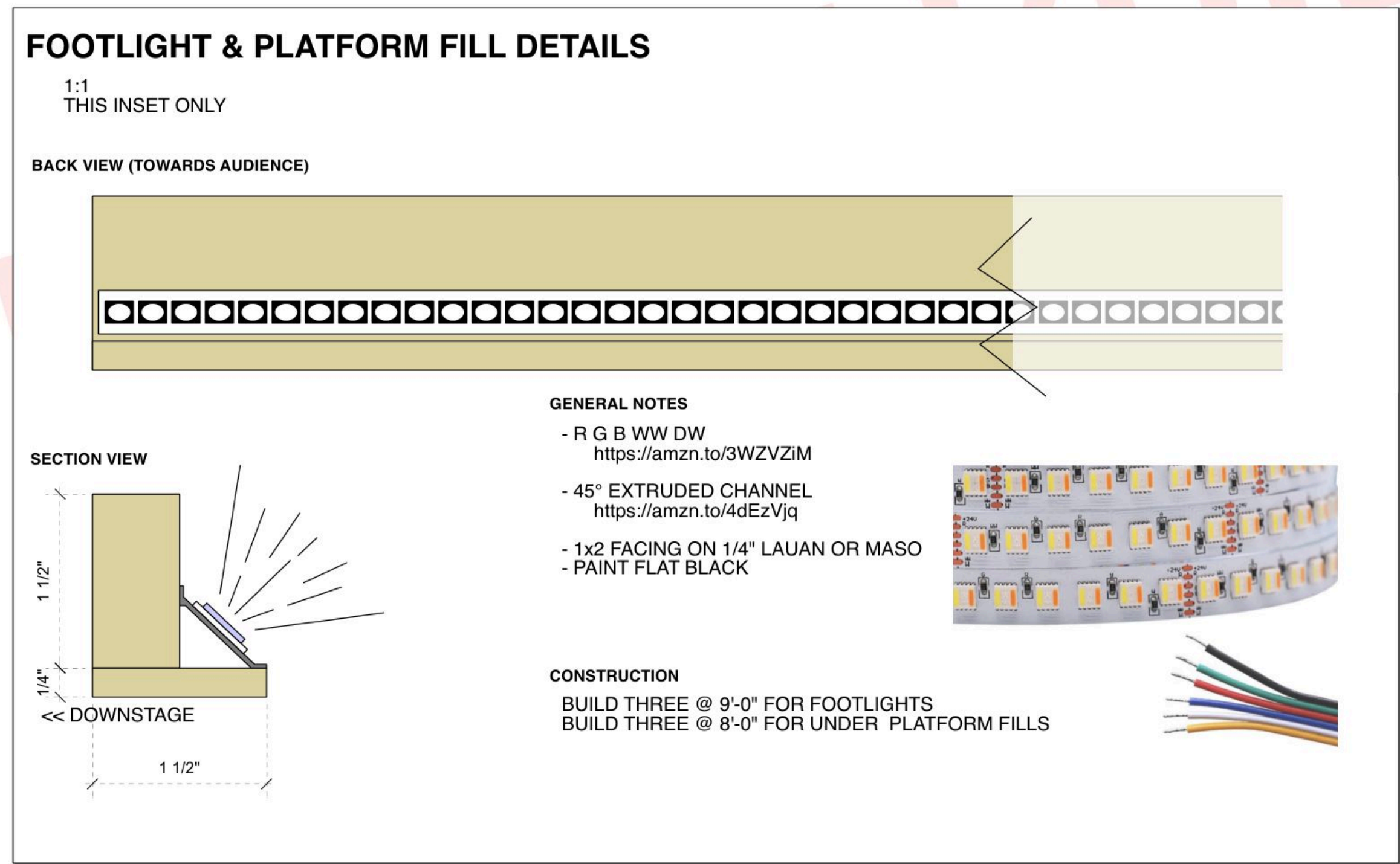
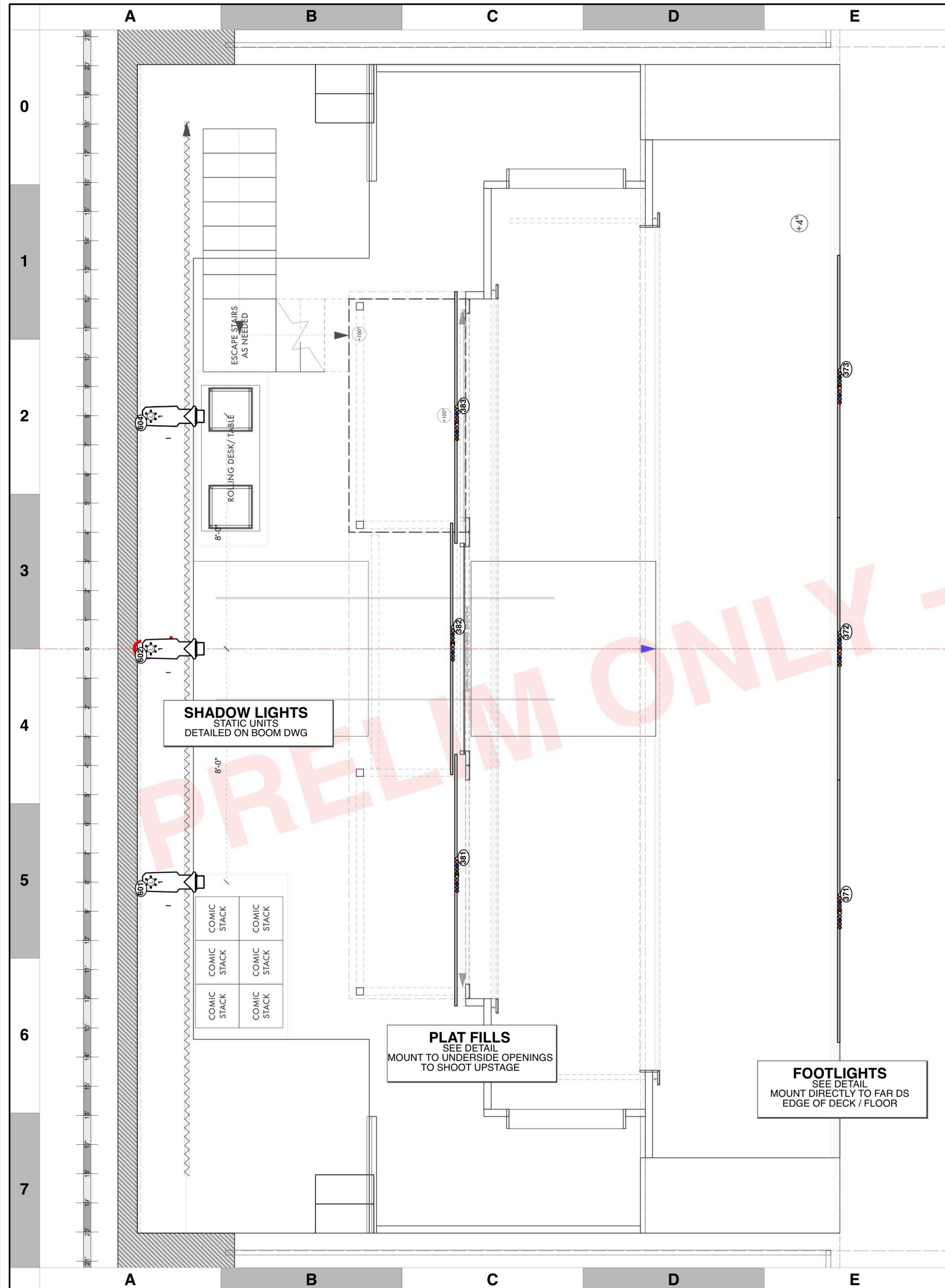
THE BOY WHO LOVED BATMAN

PRODUCTION STAFF
 DIRECTOR: JEFF CALHOUN
 LIGHTING DESIGNER: MIKE WOOD
 SCENIC DESIGNER: DANIEL ALLEN
 ASST LD: MACK SCALES
 PROGRAMMER: DALTON HAMILTON
 PROD ELEC: REUBEN HIRSH
 PROJECTION DESIGNER: CAITE HEVNER

JAEB THEATRE
STRAZ CENTER, TAMPA FL

SCALE 1/2" = 1'
PG SIZE ARCH D
DWG NUMBER **L03**

**LIGHT PLOT - BOOMS
BOOMS & LADDERS**



KEY TO INSTRUMENTATION		
	SolaFrame Theatre	6
	Robe Spider	5
	ETC S4-19° Lustr S2	4
	ETC S4-26° Lustr S2	20
	ETC S4-36° Lustr S2	13
	ETC S4-50° Lustr S2	4
	ETC Source-4 19°	30
	ETC Source 4 26°	69
	ETC Source-4 36°	33
	ETC Source-4 50°	11

LEGEND		
ABBREVIATIONS:	FOCUS	FOC
R = Rosco	COLOR	CLR
G = GAM	LENS	
A = Apollo	TEMPLATE	
LS = Line Set	UNIT #	5
GP = Ground Plan	ENGINE TYPE	
LX = Electric	CHANNEL #	
TD = Tech. Direct.		
LD = Lighting Design		



MW LIGHTING LD# 10574
<http://www.mwlighting.com>

This document is the property of MW Lighting. It is to be used only for the production specified. The lighting design and any other information contained herein is confidential and proprietary to MW Lighting. It is to be used only for the production specified and is not to be distributed, copied, or otherwise used without the written consent of MW Lighting. All rights reserved.

REVISION HISTORY			
NO.	REVISION	DATE	BY
A01	SET LX SHOP BUILD	7/15/24	MTW
A02	PRELIM RELEASE - ROUGHS	8/1/24	MTW
A03	PRELIM RELEASE	8/15/24	MTW
A04	PRELIM REVISIONS v1	8/15/24	MTW
B01	SHOP PREP	8/20/24	MTW

THE BOY WHO LOVED BATMAN

PRODUCTION STAFF

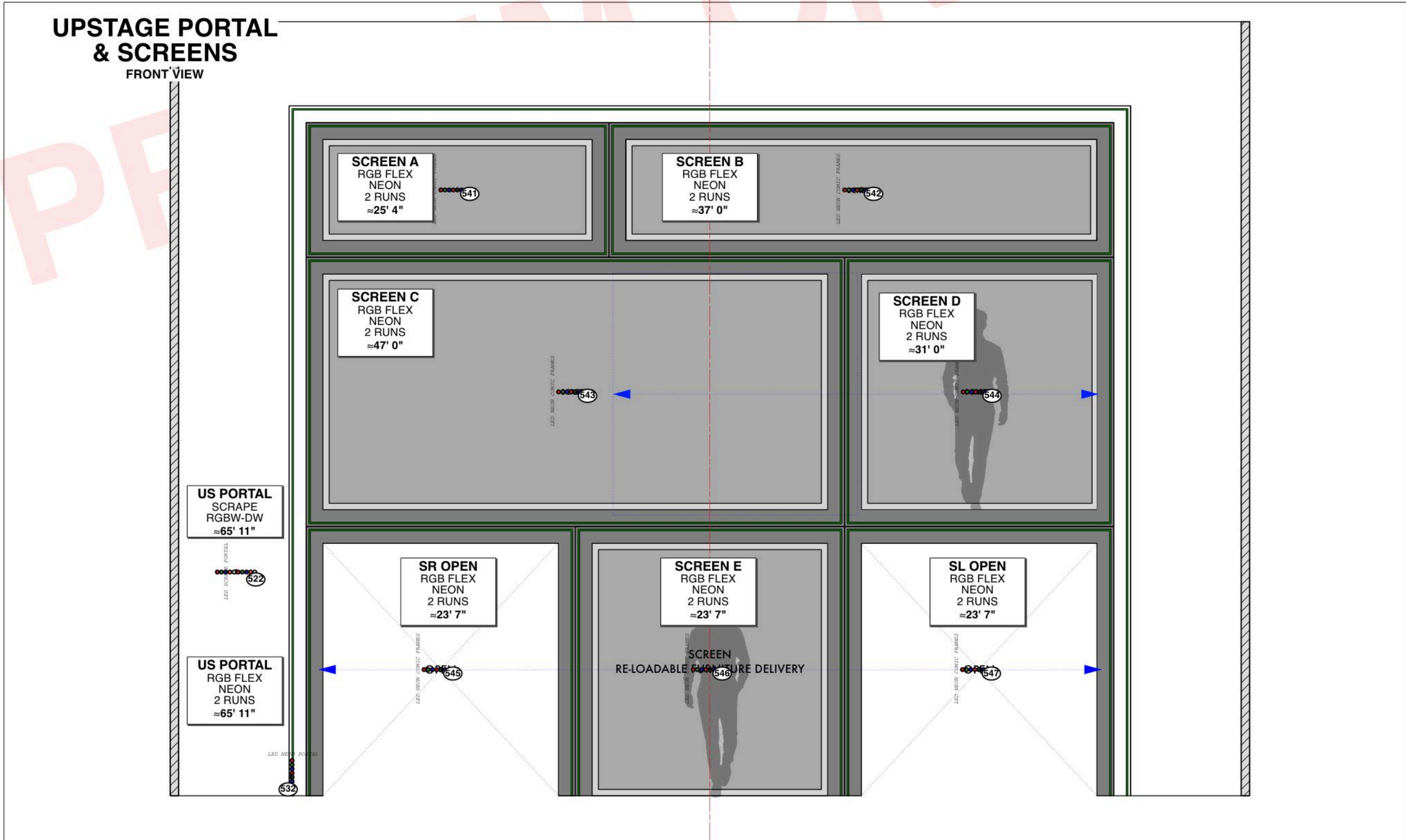
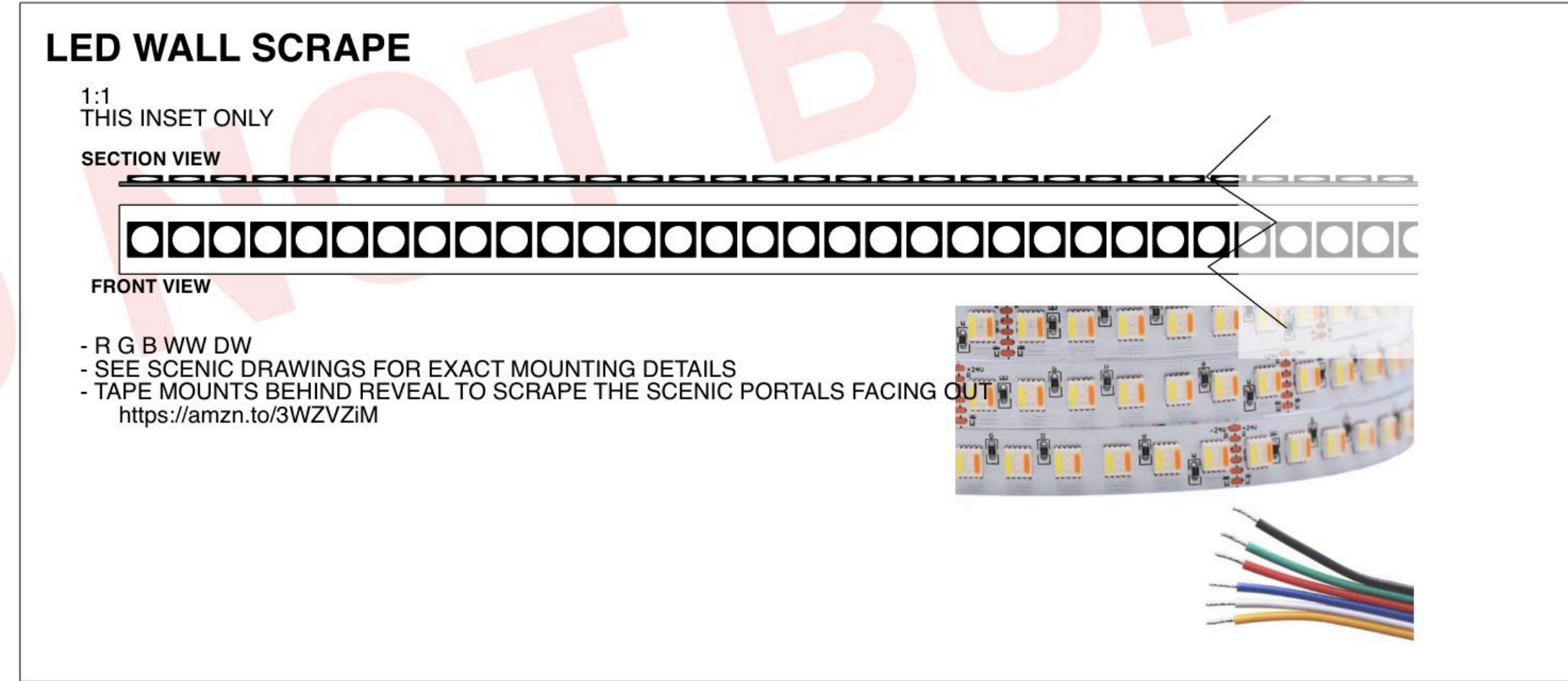
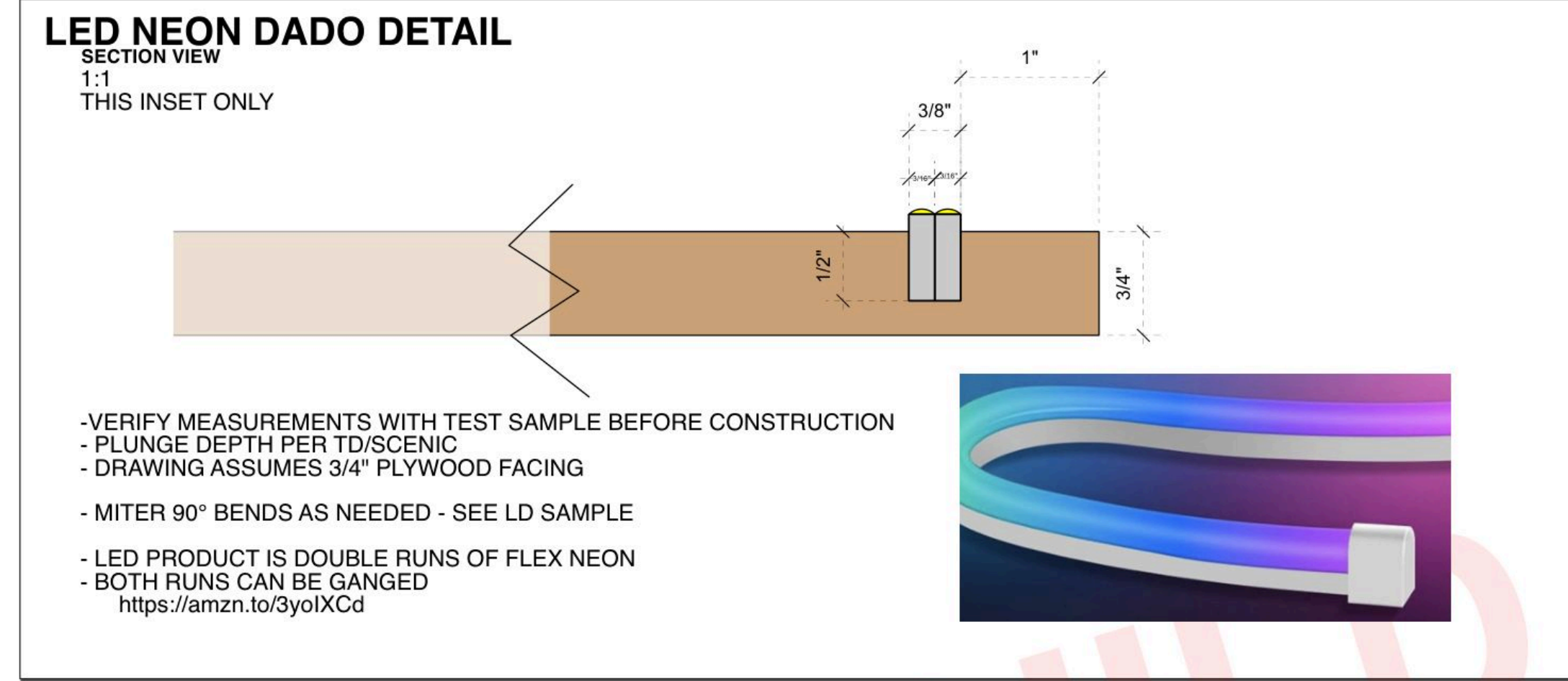
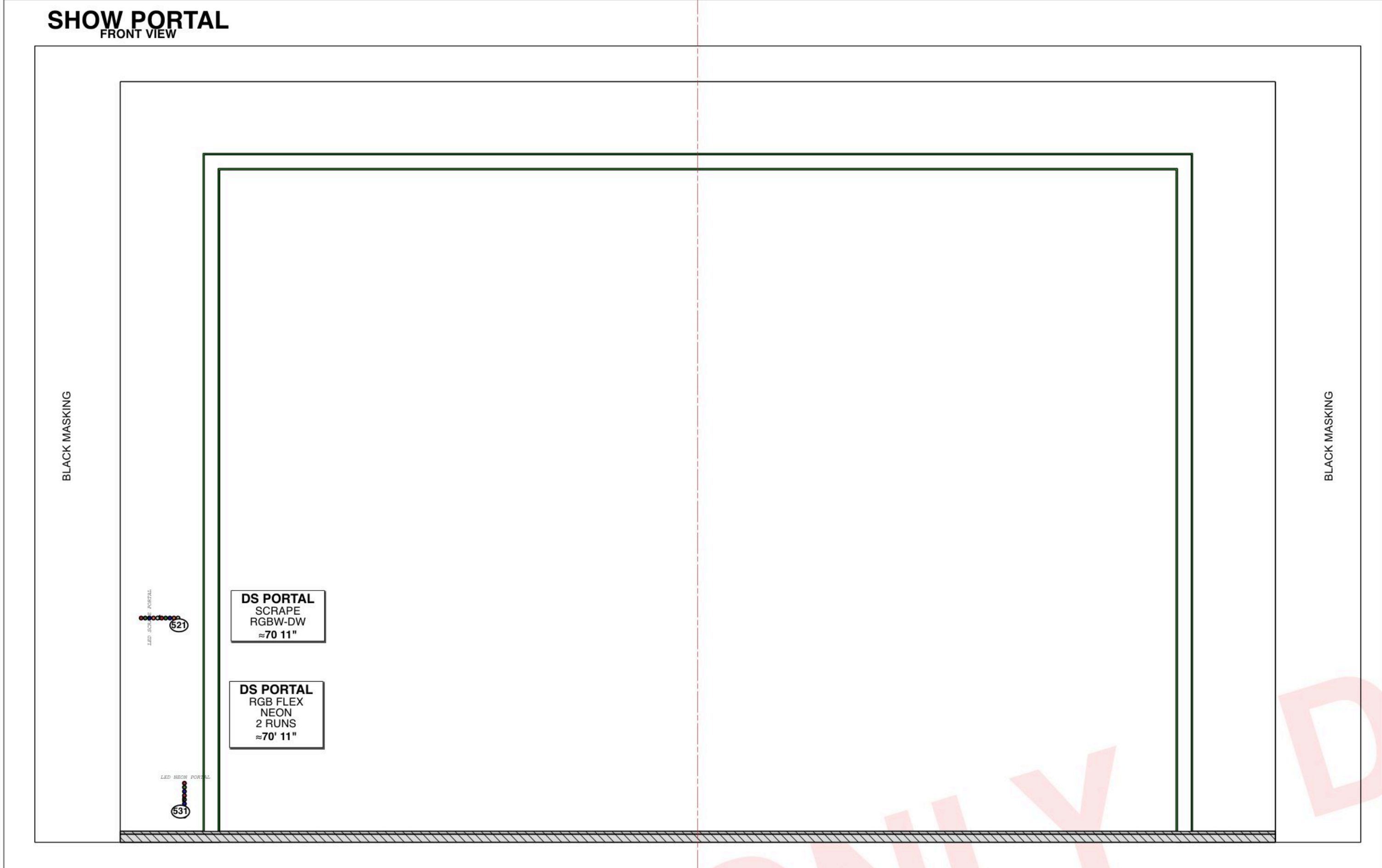
DIRECTOR: JEFF CALHOUN
 LIGHTING DESIGNER: MIKE WOOD
 SCENIC DESIGNER: DANIEL ALLEN
 ASST LD: MACK SCALLES
 PROGRAMMER: DALTON HAMILTON
 PROD ELEC: REUBEN HIRSH
 PROJECTION DESIGNER: CAITE HEVNER

JAEB THEATRE
 STRAZ CENTER, TAMPA FL

SCALE 1/2" = 1'
 PG SIZE ARCH D
 DWG NUMBER **L04**

LIGHT PLOT - DECK
 DECK FIXTURES

A B C D E F G H I J



A B C D E F G H I J

KEY TO INSTRUMENTATION

	SolaFrame Theatre	6
	Robe Spider	5
	ETC S4-19° Lustr S2	4
	ETC S4-26° Lustr S2	20
	ETC S4-36° Lustr S2	13
	ETC S4-50° Lustr S2	4
	ETC Source-4 19°	30
	ETC Source 4 26°	69
	ETC Source-4 36°	33
	ETC Source-4 50°	11

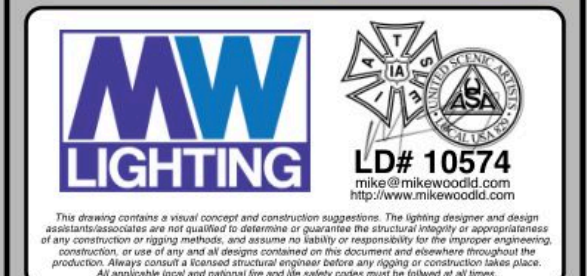
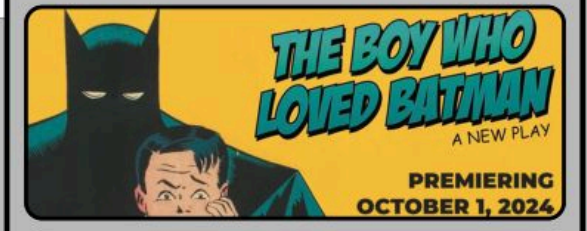
LEGEND

ABBREVIATIONS:
R = Rosco
A = Apollo
G = GAM
LS = Line Set
GP = Ground Plan
LX = Electric
TD = Tech. Direct.
LD = Lighting Design

FOCUS COLOR
FOC CLR

LENS
TEMPLATE

UNIT #
ENGINE TYPE
CHANNEL #



REVISION HISTORY

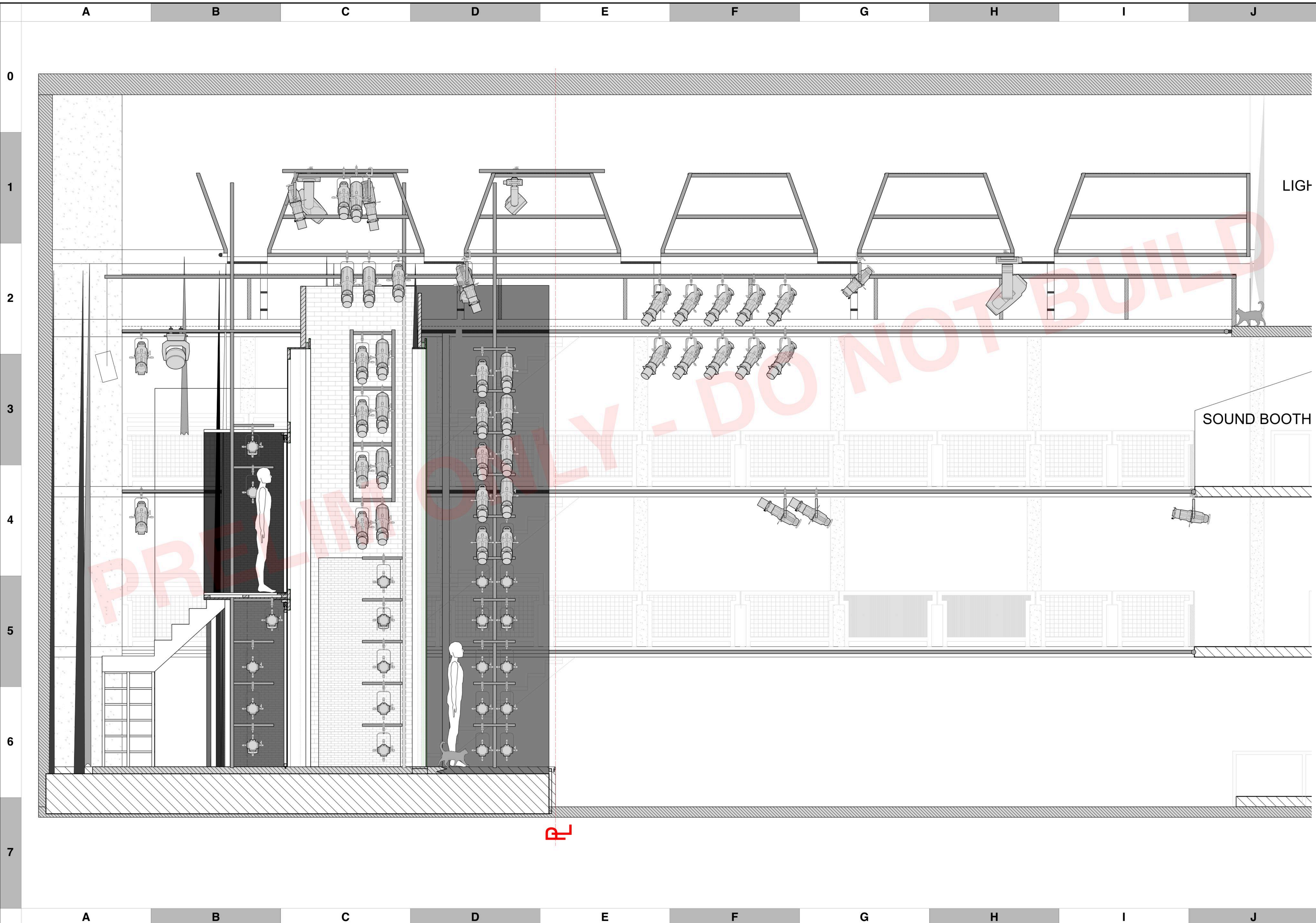
NO.	REVISION	DATE	BY
A01	SET LX SHOP BUILD	7/15/24	MTW
A02	PRELIM RELEASE - ROUGHS	8/15/24	MTW
A03	PRELIM RELEASE	8/19/24	MTW
A04	PRELIM REVISIONS v1	8/19/24	MTW
B01	SHOP PREP	8/20/24	MTW

THE BOY WHO LOVED BATMAN

PRODUCTION STAFF
DIRECTOR: JEFF CALHOUN
LIGHTING DESIGNER: MIKE WOOD
SCENIC DESIGNER: DANIEL ALLEN
ASST LD: MACK SCALES
PROGRAMMER: DALTON HAMILTON
PROD ELEC: REUBEN HIRSH
PROJECTION DESIGNER: CAITE HEVNER

JAEB THEATRE
STRAZ CENTER, TAMPA FL

SCALE 3/8" = 1'
PG SIZE ARCH D
DWG NUMBER **L05**
LIGHT PLOT - SET ELEC PORTALS AND NEON



KEY TO INSTRUMENTATION

	SolaFrame Theatre	6
	Robe Spider	5
	ETC S4-19° Lustr S2	4
	ETC S4-26° Lustr S2	20
	ETC S4-36° Lustr S2	13
	ETC S4-50° Lustr S2	4
	ETC Source-4 19°	30
	ETC Source 4 26°	69
	ETC Source-4 36°	33
	ETC Source-4 50°	11

LEGEND

ABBREVIATIONS:
 R = Rosco
 G = GAM
 A = Apollo
 LS = Line Set
 GP = Ground Plan
 LX = Electric
 TD = Tech. Direct.
 LD = Lighting Design

FOCUS COLOR
 LENS
 TEMPLATE
 UNIT #
 ENGINE TYPE
 CHANNEL #



MW LIGHTING LD# 10574
 www.mwlighting.com

REVISION HISTORY

NO.	REVISION	DATE	BY
A01	SET LX SHOP BUILD	7/15/24	MTW
A02	PRELIM RELEASE - ROUGHS	8/1/24	MTW
A03	PRELIM RELEASE	8/15/24	MTW
A04	PRELIM REVISIONS - Y1	8/15/24	MTW
B01	SHOP PREP	8/20/24	MTW

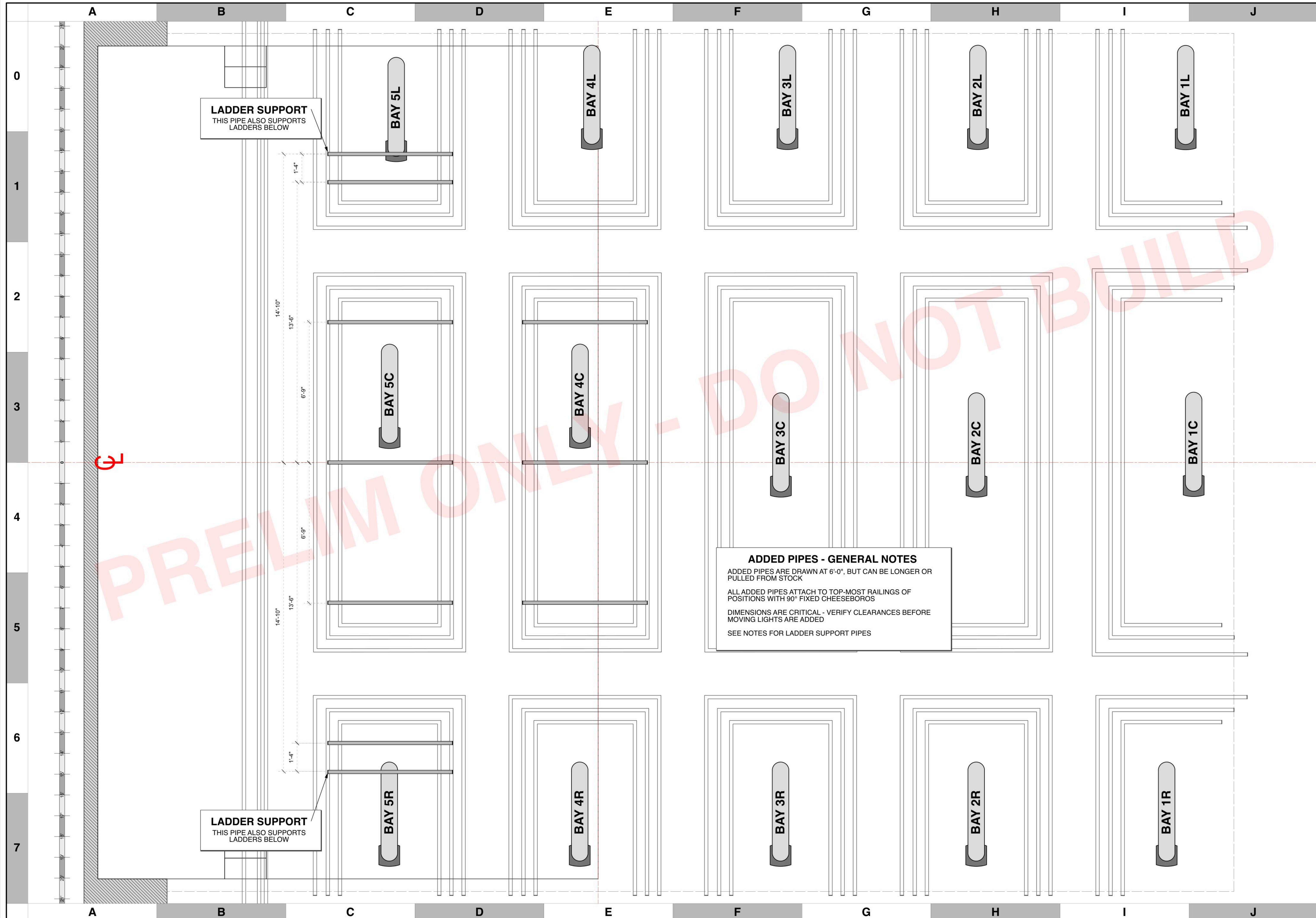
THE BOY WHO LOVED BATMAN

PRODUCTION STAFF
 DIRECTOR: JEFF CALHOUN
 LIGHTING DESIGNER: MIKE WOOD
 SCENIC DESIGNER: DANIEL ALLEN
 ASST. LD: MACK SCALES
 PROGRAMMER: DALTON HAMILTON
 PROD. ELEC.: REUBEN HIRSH
 PROJECTION DESIGNER: CAITE HEVNER

JAEB THEATRE
 STRAZ CENTER, TAMPA FL

SCALE 1/2" = 1'
 PG SIZE ARCH D
 DWG NUMBER **L06**

LIGHT PLOT - SECTION
 SECTION THRU CENTER



LADDER SUPPORT
THIS PIPE ALSO SUPPORTS
LADDERS BELOW

LADDER SUPPORT
THIS PIPE ALSO SUPPORTS
LADDERS BELOW

ADDED PIPES - GENERAL NOTES
ADDED PIPES ARE DRAWN AT 6'-0", BUT CAN BE LONGER OR PULLED FROM STOCK
ALL ADDED PIPES ATTACH TO TOP-MOST RAILINGS OF POSITIONS WITH 90° FIXED CHEESEBOROS
DIMENSIONS ARE CRITICAL - VERIFY CLEARANCES BEFORE MOVING LIGHTS ARE ADDED
SEE NOTES FOR LADDER SUPPORT PIPES

KEY TO INSTRUMENTATION

	SolaFrame Theatre	6
	Robe Spider	5
	ETC S4-19° Lustr S2	4
	ETC S4-26° Lustr S2	20
	ETC S4-36° Lustr S2	13
	ETC S4-50° Lustr S2	4
	ETC Source-4 19°	30
	ETC Source 4 26°	69
	ETC Source-4 36°	33
	ETC Source-4 50°	11

LEGEND

ABBREVIATIONS:	FOCUS	FOC
R = Rosco	COLOR	CLR
A = Apollo	LENS	
G = GAM	TEMPLATE	
LS = Line Set	UNIT #	5
GP = Ground Plan	ENGINE TYPE	
LX = Electric	CHANNEL #	
TD = Tech. Direct.		
LD = Lighting Design		



REVISION HISTORY

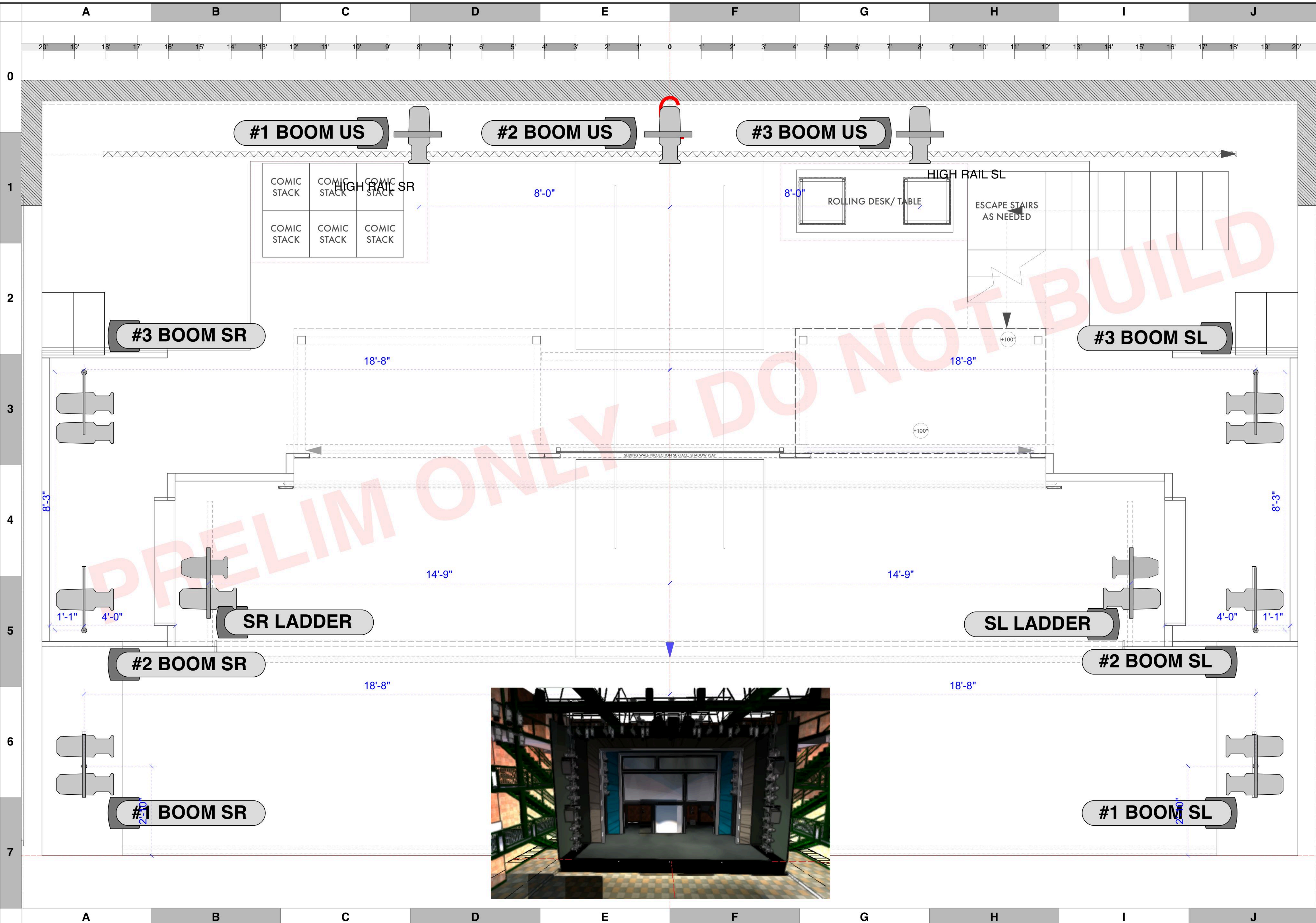
NO.	REVISION	DATE	BY
A01	SET LX SHOP BUILD	7/15/24	MTW
A02	PRELIM RELEASE - ROUGHS	8/15/24	MTW
A03	PRELIM RELEASE	8/15/24	MTW
A04	PRELIM REVISIONS v1	8/15/24	MTW
B01	SHOP PREP	8/24/24	MTW

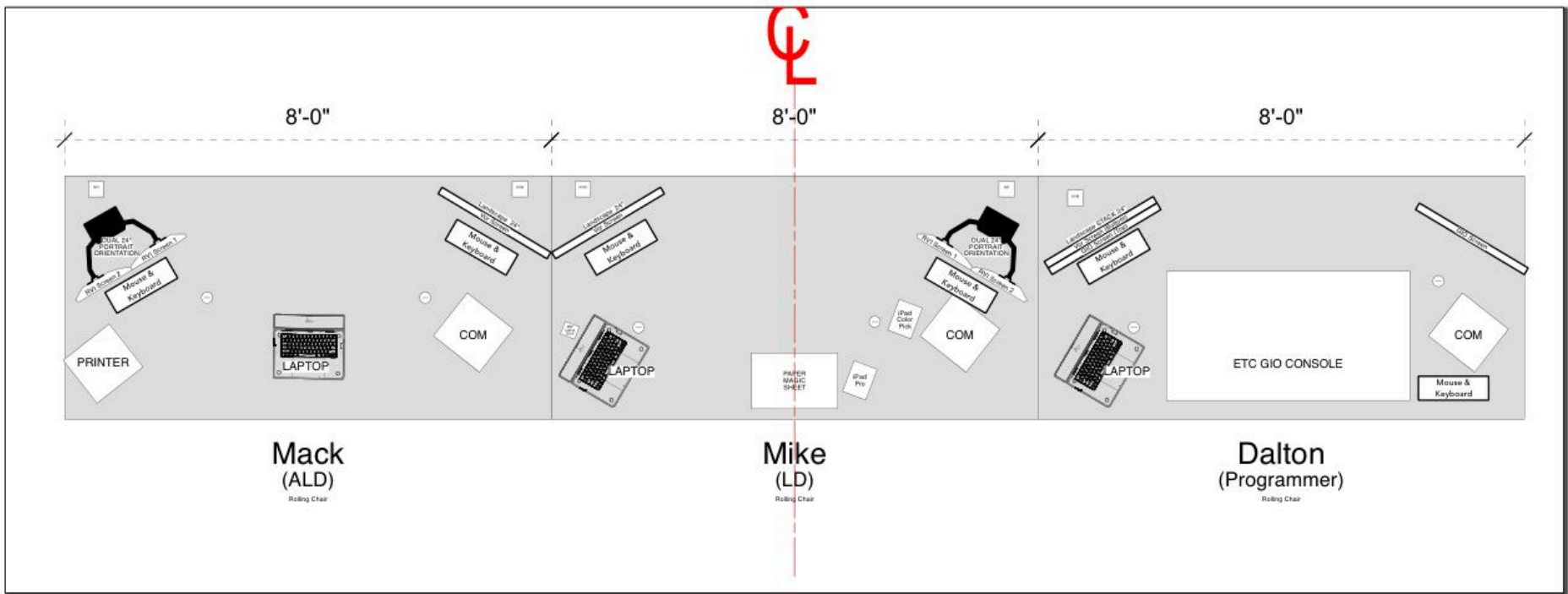
THE BOY WHO LOVED BATMAN

PRODUCTION STAFF
 DIRECTOR: JEFF CALHOUN
 LIGHTING DESIGNER: MIKE WOOD
 SCENIC DESIGNER: DANIEL ALLEN
 ASST LD: MACK SCALES
 PROGRAMMER: DALTON HAMILTON
 PROD ELEC: REUBEN HIRSH
 PROJECTION DESIGNER: CAITE HEVNER
 JAEB THEATRE
 STRAZ CENTER, TAMPA FL

SCALE 1/2" = 1'
 PG SIZE ARCH D
 DWG NUMBER L07

LIGHT PLOT - ADDED PIPES
 OVERSTAGE HANG





LIGHTING NETWORK DROPS

PROVIDE ETC LIGHTING NETWORK AT

- ALD PUCK
- LD PUCK
- LD DOCK
- LD IPAD
- PROGRAMMER

LIGHTING INTERCOM

MINIMUM OF (2) TWO CHANNELS OF INTERCOM

- LIGHTING PUBLIC
- LIGHTING PRIVATE

DESIGNER AND PROGRAMMER TO PROVIDE OWN HEADSETS
 DESIGNER COM STATION TO BE CONFIGURED TO OUTPUT ELECTRET MIC POWER

GENERAL NOTES

- TECH TABLES SHOULD HAVE HARD TOPS
- TECH TABLES SHOULD BE FINISHED IN BLACK
- PROVIDE AMPLE POWER OUTLETS THROUGHOUT



THE BOY WHO LOVED BATMAN

SCALE **3/8" = 1'**
UNLESS OTHERWISE NOTED

DWG NUMBER

PG SIZE **LETTER**
1/2"

L09

TECH TABLE DRAWING
 LIGHTING TABLES

