

LS #	Trim	Venue Deck	D' to PL	Description
46	0'-0"	38'-9 1/2"		CYCLORAMA
45	0'-0"	38'-1 1/2"		STAR CURTAIN B/O
44	36'-0"	37'-5 1/2"		#7 ELECTRIC
43	0'-0"	36'-9 1/2"		#5 LEGS
42	0'-0"	36'-1 1/2"		#4 BORDER
41	0'-0"	35'-5 1/2"		
40	0'-0"	34'-9 1/2"		SMOKE STACK
39	0'-0"	33'-5 1/2"		
38	32'-0"	32'-9 1/2"		#6 ELECTRIC
37	0'-0"	30'-9 1/2"		[ORCH SHELL #3 - NOT USED]
36	32'-0"	29'-5 1/2"		#5 ELECTRIC
35	0'-0"	28'-9 1/2"		
34	28'-0"	28'-1 1/2"		
33	0'-0"	27'-5 1/2"		
32	31'-0"	26'-1 1/2"		#4 ELECTRIC
31	0'-0"	25'-5 1/2"		
30	0'-0"	24'-9 1/2"		#4 LEGS
29	0'-0"	24'-1 1/2"		#3 BORDER
28	0'-0"	23'-5 1/2"		
27	0'-0"	22'-9 1/2"		
26	30'-0"	22'-1 1/2"		#3 ELECTRIC
25	0'-0"	20'-9 1/2"		
24	0'-0"	18'-9 1/2"		[ORCH SHELL #2 - NOT USED]
23	0'-0"	17'-5 1/2"		B/O TRAY (USED AS LEGS)
22	0'-0"	16'-9 1/2"		
21	0'-0"	16'-1 1/2"		#2 BORDER
20	0'-0"	15'-5 1/2"		
19	0'-0"	14'-9 1/2"		#2 LADDERS UPSTAGE PICKS
18	29'-0"	14'-1 1/2"		#2 ELECTRIC
17	0'-0"	13'-5 1/2"		#2 LADDERS DOWNSTAGE PICKS
16	0'-0"	12'-1 1/2"		
15	0'-0"	11'-5 1/2"		
14	0'-0"	10'-9 1/2"		
13	0'-0"	10'-1 1/2"		#2 PORTAL & LEGS
12	0'-0"	9'-5 1/2"		NIGHTCLUB DECODRAPES
11	0'-0"	8'-9 1/2"		BLACK SCRIM (HOUSE)
10	0'-0"	8'-1 1/2"		#1 BORDER
9	0'-0"	6'-9 1/2"		[ORCH SHELL #1 - NOT USED]
8	0'-0"	5'-5 1/2"		#1 LADDERS UPSTAGE PICKS
7	29'-0"	4'-9 1/2"		#1 ELECTRIC
6	0'-0"	4'-1 1/2"		#1 LADDERS DOWNSTAGE PICKS
5	0'-0"	3'-5 1/2"		[PJ SCREEN - NOT USED]
4	0'-0"	2'-9 1/2"		HANGING BULB (JAIL)
3	0'-0"	2'-1 1/2"		MAIN CURTAIN
2	0'-0"	1'-1 1/2"		#1 LEGS
1	0'-0"	0'-9 1/2"		#1 PORTAL
N/A	N/A	0'		Plaster Line
LS #	Trim	Venue Deck	D' to PL	Description

KEY TO INSTRUMENTATION

Martin MAC Encore Performance CLD

- High End SolaFrame Theatre
- High End SolaSpot 1000
- Robe BMFL Followspot
- CHAUVET R2 WASH
- ETC Source-4 10"
- S4-14" LED Tung
- ETC S4-19" LED Tungsten
- ETC S4-50" LED Tungsten
- Ovation E260 36"
- Ovation E260 36"
- ETC S4-14" LED Lustr
- ETC S4-19" LED Lustr
- ETC S4-36" LED Lustr
- ETC S4-50 LED Lustr
- ETC S4-70" LED Lustr-S2
- ETC ColorSource PAR-MR
- ETC ColorSource PAR
- ETC ColorSource Linear 4 Deep Blue
- GAM TwinSpin
- GAM Film Loop
- S4A Template Holder
- ETC S4-PAR (MFL)

LEGEND

ABBREVIATIONS:
 R = Rosco
 G = GAM
 A = Apollo
 LS = Line Set
 GP = Ground Plan
 LX = Electric
 TD = Tech. Direct.
 LD = Lighting Design

FOCUS COLOR
 LENS
 TEMPLATE
 UNIT #
 ENGINE TYPE
 CHANNEL #



MW LIGHTING LD# 10574
 www.mwlighting.com

REVISION HISTORY

NO.	REVISION	DATE	BY
A01	SCENIC LAYOUT / DOC PREP	09 JULY 22	MMT
A02	PRELIM V/P FOR SHOP BID	12 AUG 22	MMT
A03	SCENIC UPDATES - SHOP	08 AUG 22	MMT
A04	REVISIONS	11 AUG 22	MMT
A05	ERROR FIXES / ADDED TEMPLATES	19 AUG 22	MMT
LD#10574	LOAD IN	27 AUG 22	MMT

ANYTHING GOES

PRODUCTION STAFF
 DIRECTOR: SARA EDWARDS
 SCENIC DESIGNER: STEVEN K. MITCHELL
 LIGHTING DESIGNER: MIKE WOOD
 ASSOC. PROGRAMMER: DALTON HAMILTON
 ASST. LIGHTING DSGNR: DIONTE MERCADO
 ASST. LIGHTING DSGNR: TRULY CATES
 PROD. ELEC: MATTHEW PEDDIE

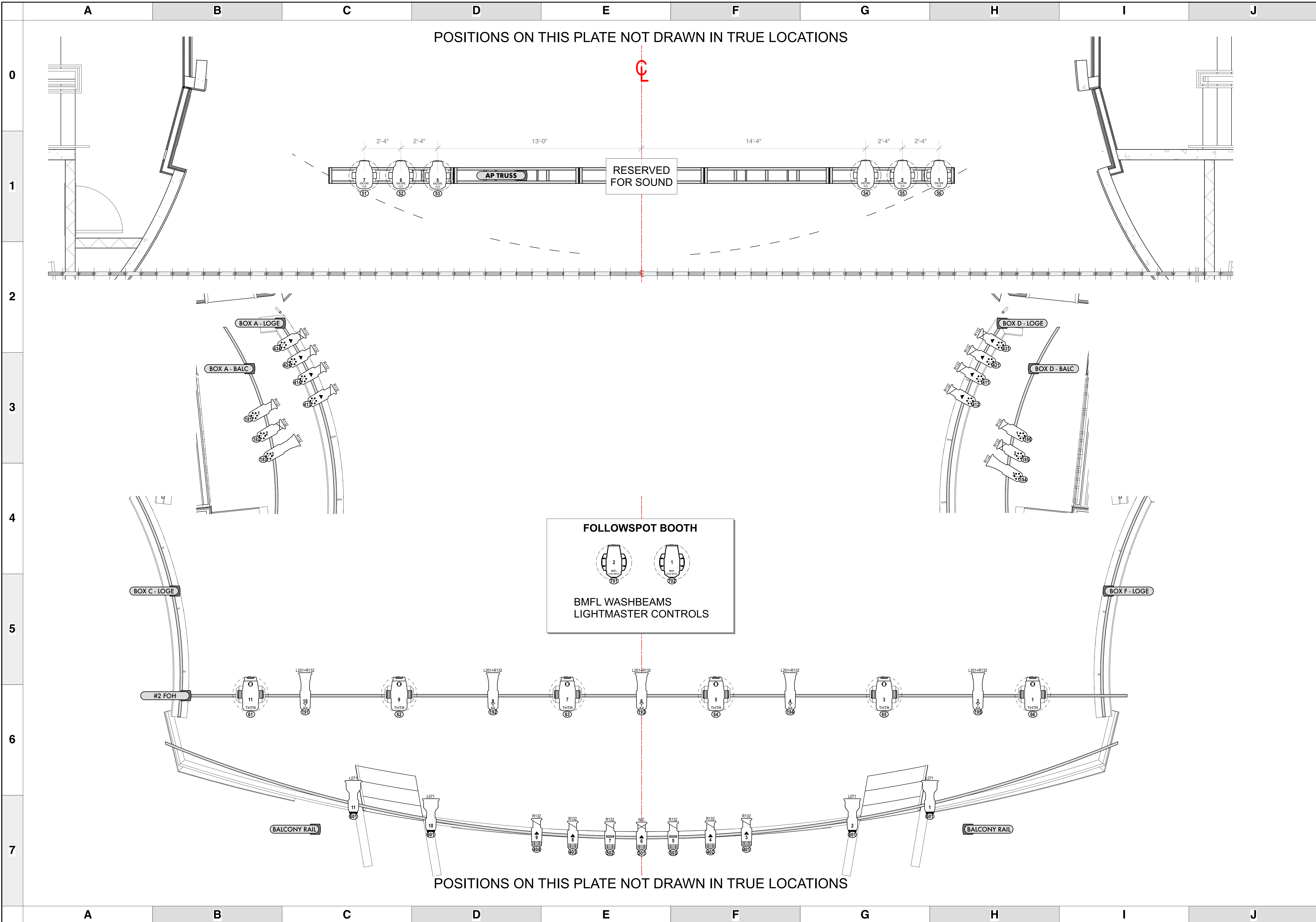
THE BYERS THEATRE
 SANDY SPRINGS, GA - SEPTEMBER 2022

SCALE **3/8" = 1'**
 UNLESS OTHERWISE NOTED

PG SIZE **ARCH D**

DWG NUMBER **1**
 OF 6

LIGHT PLOT OVER STAGE



POSITIONS ON THIS PLATE NOT DRAWN IN TRUE LOCATIONS

POSITIONS ON THIS PLATE NOT DRAWN IN TRUE LOCATIONS

KEY TO INSTRUMENTATION

- Martin MAC Encore Performance CLD
- High End SolaFrame Theatre
- High End SolaSpot 1000
- Robe BMFL Followspot
- CHAUVET R2 WASH
- ETC Source-4 10"
- S4-14" LED Tung
- ETC S4-19" LED Tungsten
- ETC S4-50" LED Tungsten
- Ovation E260 36"
- Ovation E260 36"
- ETC S4-14" LED Lustr
- ETC S4-19" LED Lustr
- ETC S4-26" LED Lustr
- ETC S4-36" LED Lustr
- ETC S4-50 LED Lustr
- ETC S4-70" LED Lustr-S2
- ETC ColorSource PAR-MR
- ETC ColorSource PAR
- ETC ColorSource Linear 4 Deep Blue
- GAM TwinSpin
- GAM Film Loop
- S4A Template Holder
- ETC S4-PAR (MFL)

LEGEND

ABBREVIATIONS:	FOCUS	FOC
R = Rosco	COLOR	CLR
G = GAM	LENS	
A = Apollo	TEMPLATE	
LS = Line Set	UNIT #	5
GP = Grand Plan	LX = Electric	
TD = Tech. Direct.	ENGINE TYPE	
LD = Lighting Desgr.	CHANNEL #	



MW LIGHTING LD# 10574
10574

REVISION HISTORY

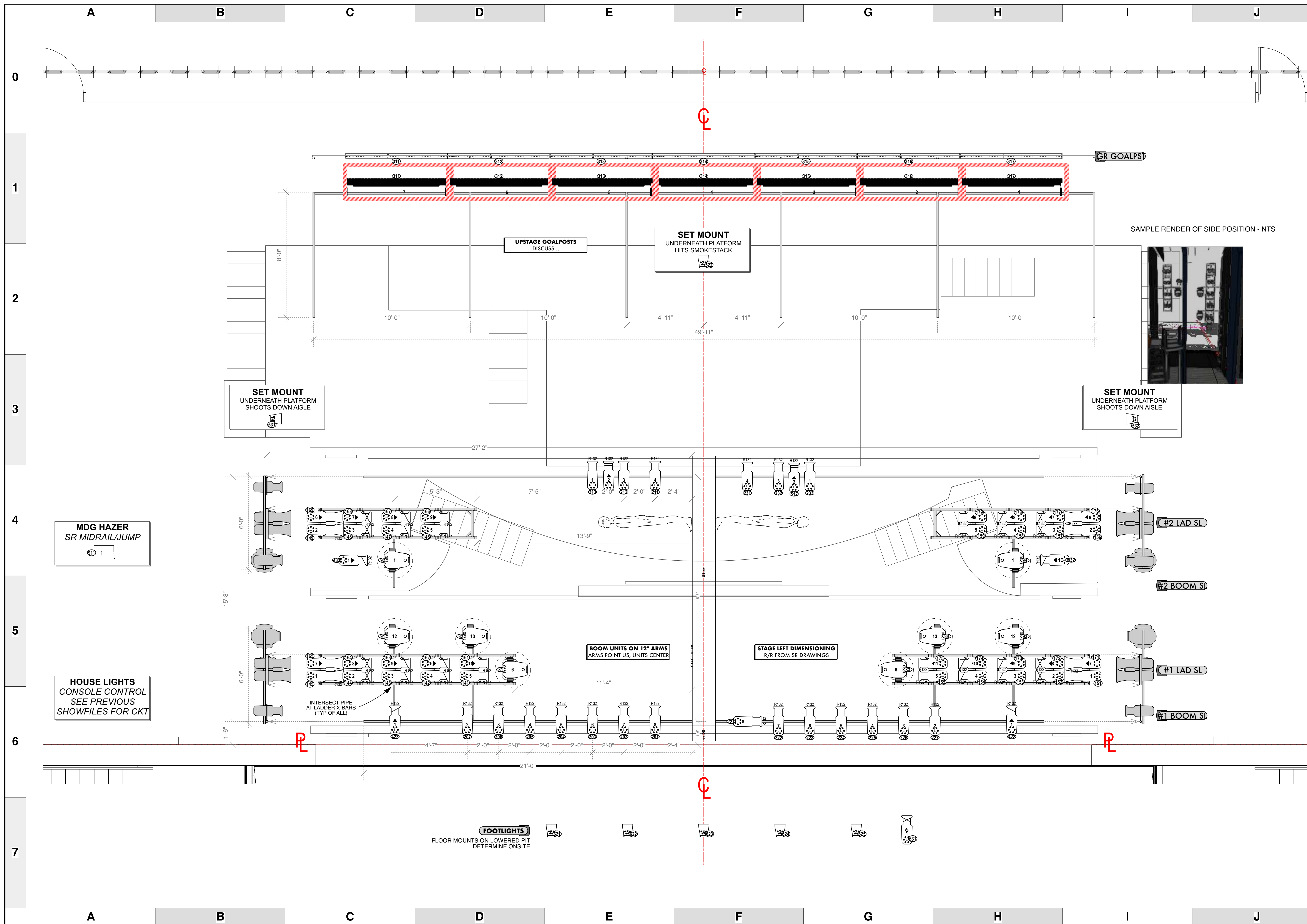
NO.	REVISION	DATE	BY
A01	SCENIC LAYOUT / DOC PREP	09 JULY 22	MTW
A02	PRELIMINARY FOC SHIP ED	12 AUG 22	MTW
A03	SCENIC UPDATES / SHIP	08 AUG 22	MTW
A04	REPAIR FIXES	11 AUG 22	MTW
A05	ERROR FIXES / ADDED TEMPLATES	19 AUG 22	MTW
A06	LOAD IN	27 AUG 22	MTW

ANYTHING GOES

PRODUCTION STAFF
 DIRECTOR: SARA EDWARDS
 SCENIC DESIGNER: STEVEN K. MITCHELL
 LIGHTING DESIGNER: MIKE WOOD
 ASSOC. PROGRAMMER: DALTON HAMILTON
 ASST. LIGHTING DSGNR: DIONTE MERCADO
 ASST. LIGHTING DSGNR: TRULY CATES
 PROD. ELEC: MATTHEW PEDDIE
THE BYERS THEATRE
 SANDY SPRINGS, GA - SEPTEMBER 2022

SCALE **3/8" = 1'**
UNLESS OTHERWISE NOTED
 PG SIZE ARCH D
 DWG NUMBER **2**
OF 6

LIGHT PLOT
 FRONT OF HOUSE



KEY TO INSTRUMENTATION

Martin MAC Encore Performance CLD

- High End SolaFrame Theatre
- High End SolaSpot 1000
- Robe BMFL Followspot
- CHAUVET R2 WASH
- ETC Source-4 10°
- S4-14° LED Tung
- ETC S4-19° LED Tungsten
- ETC S4-50° LED Tungsten
- Ovation E260 36°
- Ovation E260 36°
- ETC S4-14° LED Lustr
- ETC S4-19° LED Lustr
- ETC S4-26° LED Lustr
- ETC S4-50 LED Lustr
- ETC S4-70° LED Lustr-S2
- ETC ColorSource PAR-MR
- ETC ColorSource PAR
- ETC ColorSource Linear 4 Deep Blue
- GAM TwinSpin
- GAM Film Loop
- S4A Template Holder
- ETC S4-PAR (MFL)

LEGEND

ABBREVIATIONS:
 R = Rosco
 G = GAM
 A = Apollo
 LS = Line Set
 GP = Grand Plan
 LX = Electric
 TD = Tech. Direct.
 LD = Lighting Desgr.

FOCUS COLOR
 LENS
 TEMPLATE
 UNIT #
 ENGINE TYPE
 CHANNEL #



MW LIGHTING LD# 10574
 www.mwlighting.com

REVISION HISTORY

NO.	REVISION	DATE	BY
A01	SCENIC LAYOUT / BOG PREP	09 JULY 22	MTW
A02	PRELIM 10' FOR SHOP BID	12 AUG 22	MTW
A03	SCENIC UPDATES / SHOP	08 AUG 22	MTW
A04	SCENIC UPDATES / SHOP	11 AUG 22	MTW
A05	ERROR FIXES / ADDED TEMPLATES	19 AUG 22	MTW
A06	LOAD IN	27 AUG 22	MTW

ANYTHING GOES

PRODUCTION STAFF

DIRECTOR: SARA EDWARDS
 SCENIC DESIGNER: STEVEN K. MITCHELL
 LIGHTING DESIGNER: MIKE WOOD
 ASSOC. PROGRAMMER: DALTON HAMILTON
 ASST. LIGHTING DSGNR: DIONTE MERCADO
 ASST. LIGHTING DSGNR: TRULY CATES
 PROD. ELEC: MATTHEW PEDDIE

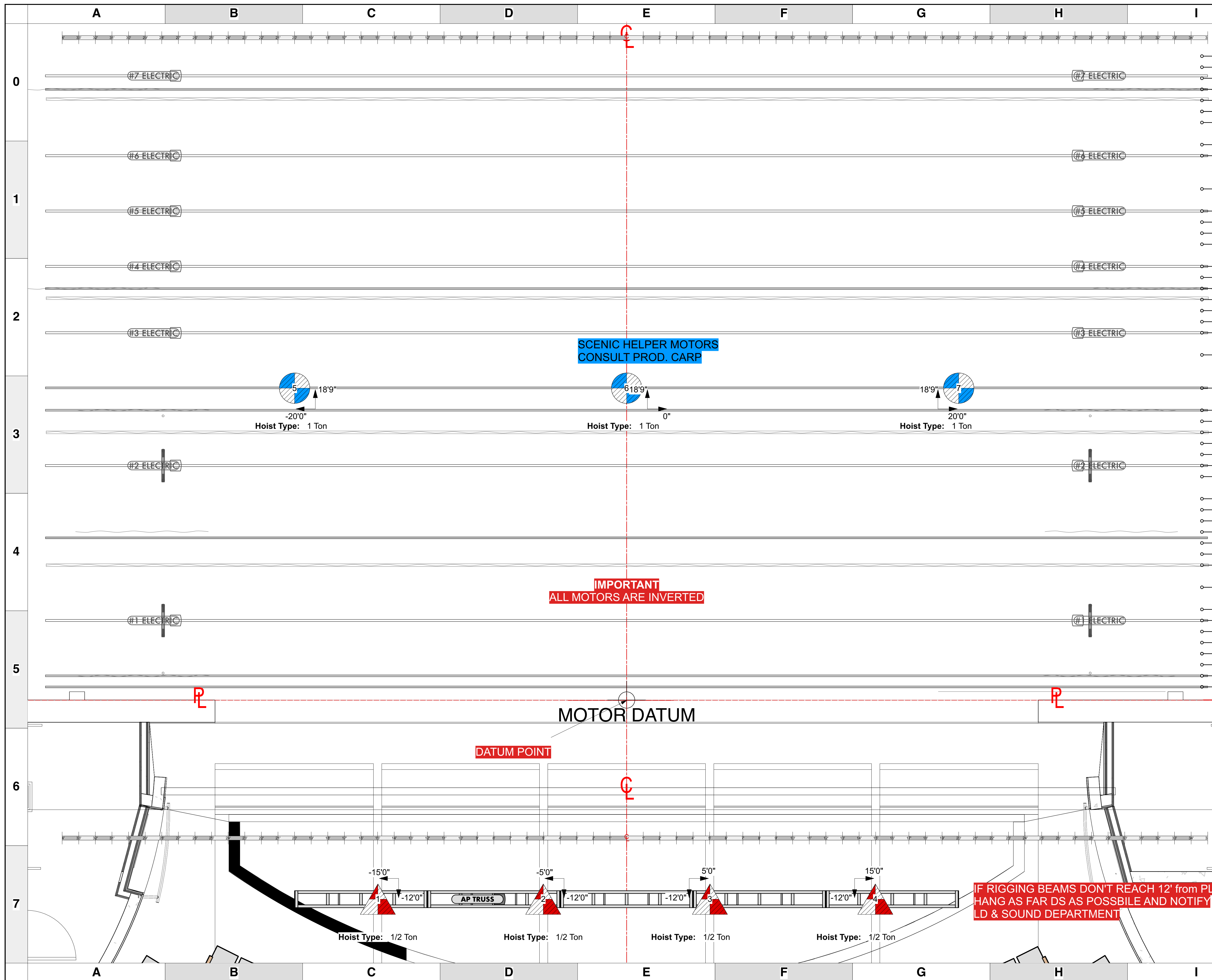
THE BYERS THEATRE
 SANDY SPRINGS, GA - SEPTEMBER 2022

SCALE: 3/8" = 1'
 UNLESS OTHERWISE NOTED

PG SIZE: ARCH D

DWG NUMBER: **3** OF 6

LIGHT PLOT
 BOOMS & LADDERS



LS #	Trim	Venue Deck	D' to PL	Description
46	0'-0"		38'-9 1/2"	CYCLORAMA
45	0'-0"		38'-1 1/2"	STAR CURTAIN B/O
44	36'-0"		37'-5 1/2"	#7 ELECTRIC
43	0'-0"		36'-9 1/2"	#5 LEGS
42	0'-0"		36'-1 1/2"	#4 BORDER
41	0'-0"		35'-5 1/2"	
40	0'-0"		34'-9 1/2"	SMOKE STACK
39	0'-0"		33'-5 1/2"	
38	32'-0"		32'-9 1/2"	#6 ELECTRIC
37	0'-0"		30'-9 1/2"	[ORCH SHELL #3 - NOT USED]
36	32'-0"		29'-5 1/2"	#5 ELECTRIC
35	0'-0"		28'-9 1/2"	
34	28'-0"		28'-1 1/2"	
33	0'-0"		27'-5 1/2"	
32	31'-0"		26'-1 1/2"	#4 ELECTRIC
31	0'-0"		25'-5 1/2"	
30	0'-0"		24'-9 1/2"	#4 LEGS
29	0'-0"		24'-1 1/2"	#3 BORDER
28	0'-0"		23'-5 1/2"	
27	0'-0"		22'-9 1/2"	
26	30'-0"		22'-1 1/2"	#3 ELECTRIC
25	0'-0"		20'-9 1/2"	
24	0'-0"	BREASTS DOWNSTAGE	18'-9 1/2"	[ORCH SHELL #2 - NOT USED]
23	0'-0"		17'-5 1/2"	B/O TRAV (USED AS LEGS)
22	0'-0"		16'-9 1/2"	
21	0'-0"		16'-1 1/2"	#2 BORDER
20	0'-0"		15'-5 1/2"	
19	0'-0"		14'-9 1/2"	#2 LADDERS UPSTAGE PICKS
18	29'-0"		14'-1 1/2"	#2 ELECTRIC
17	0'-0"		13'-5 1/2"	#2 LADDERS DOWNSTAGE PICKS
16	0'-0"		12'-1 1/2"	
15	0'-0"		11'-5 1/2"	
14	0'-0"		10'-9 1/2"	
13	0'-0"		10'-1 1/2"	#2 PORTAL & LEGS
12	0'-0"		9'-5 1/2"	NIGHTCLUB DECODRAPES
11	0'-0"		8'-9 1/2"	BLACK SCRIM (HOUSE)
10	0'-0"		8'-1 1/2"	#1 BORDER
9	0'-0"		6'-9 1/2"	[ORCH SHELL #1 - NOT USED]
8	0'-0"		5'-5 1/2"	#1 LADDERS UPSTAGE PICKS
7	29'-0"		4'-9 1/2"	#1 ELECTRIC
6	0'-0"		4'-1 1/2"	#1 LADDERS DOWNSTAGE PICKS
5	0'-0"		3'-5 1/2"	[PJ SCREEN - NOT USED]
4	0'-0"		2'-9 1/2"	HANGING BULB (JAIL)
3	0'-0"		2'-1 1/2"	MAIN CURTAIN
2	0'-0"		1'-1 1/2"	#1 LEGS
1	0'-0"		0'-9 1/2"	#1 PORTAL
N/A	N/A		0"	Plaster Line
LS #	Trim	Venue Deck	D' to PL	Description

KEY TO INSTRUMENTATION

Martin MAC Encore Performance CLD

- High End SolaFrame Theatre
- High End SolaSpot 1000
- Robe BMFL Followspot
- CHAUVET R2 WASH
- ETC Source-4 10"
- S4-14" LED Tung
- ETC S4-19" LED Tungsten
- ETC S4-50" LED Tungsten
- Ovation E260 36"
- Ovation E260 36"
- ETC S4-14" LED Lustr
- ETC S4-19" LED Lustr
- ETC S4-26" LED Lustr
- ETC S4-36" LED Lustr
- ETC S4-50 LED Lustr
- ETC S4-70" LED Lustr-S2
- ETC ColorSource PAR-MR
- ETC ColorSource PAR
- ETC ColorSource Linear 4 Deep Blue
- GAM TwinSpin
- GAM Film Loop
- S4A Template Holder
- ETC S4-PAR (MFL)

LEGEND

ABBREVIATIONS: R = Rosco, G = GAM, A = Apollo, LS = Line Set, GP = Ground Plan, LX = Electric, TD = Tech. Direct, LD = Lighting Design

FOCUS COLOR, LENS, TEMPLATE, UNIT #, ENGINE TYPE, CHANNEL

REVISION HISTORY

NO.	REVISION	DATE	BY
A01	SCENIC LAYOUT / DOC PREP	09 JULY 22	MTW
A02	PRELIMS / PCB SHOP BID	12 AUG 22	MTW
A03	SCENIC UPDATES / SHOP	08 AUG 22	MTW
A04	REVISIONS	11 AUG 22	MTW
A05	ERROR FIXES / ADDED TEMPLATE	19 AUG 22	MTW
A06	LOAD IN	27 AUG 22	MTW

ANYTHING GOES

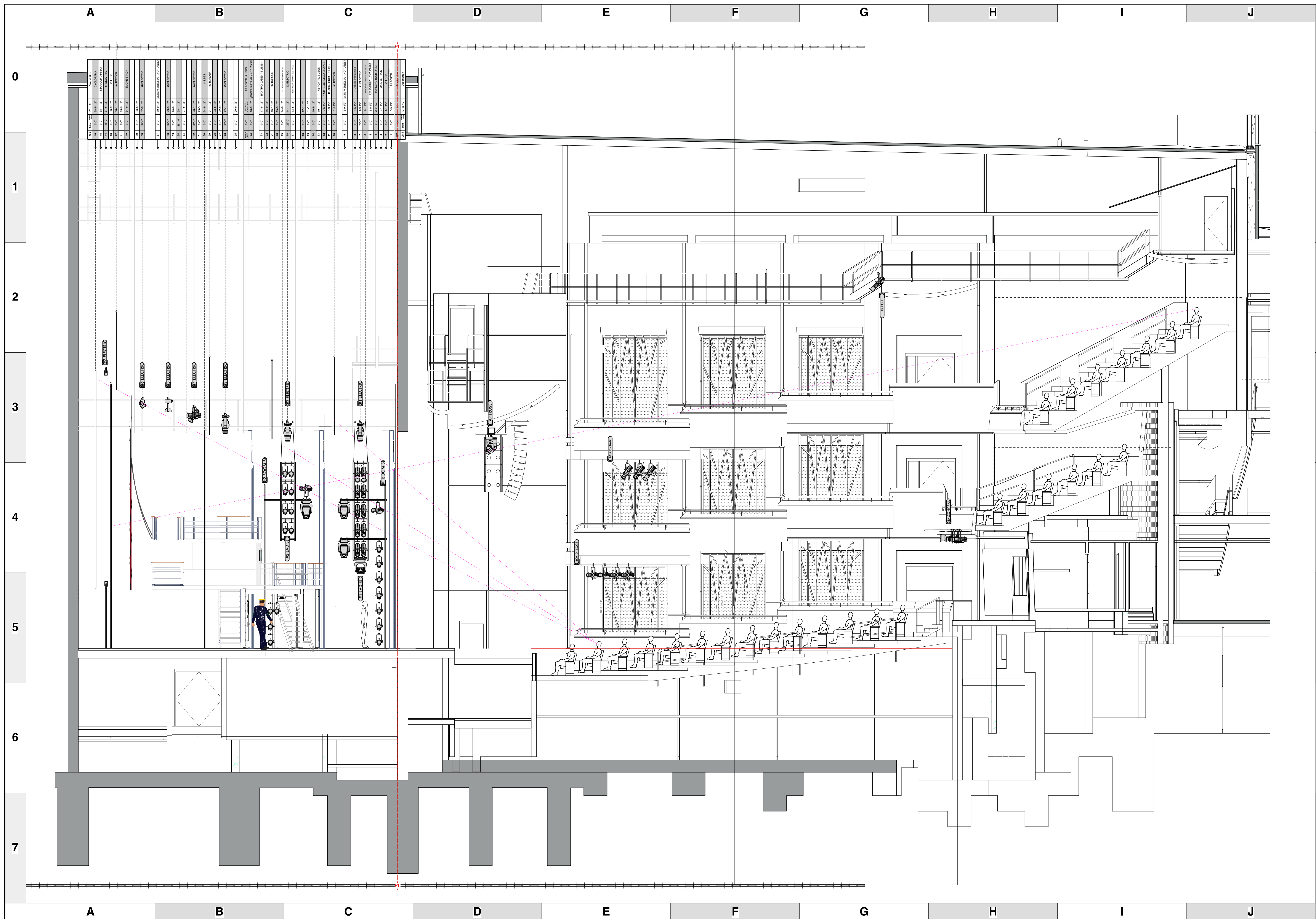
PRODUCTION STAFF

DIRECTOR: SARA EDWARDS
 SCENIC DESIGNER: STEVEN K. MITCHELL
 LIGHTING DESIGNER: MIKE WOOD
 ASSOC. PROGRAMMER: DALTON HAMILTON
 ASST. LIGHTING DSGNR: DIONTE MERCADO
 ASST. LIGHTING DSGNR: TRULY CATES
 PROD. ELEC: MATTHEW PEDDIE

THE BYERS THEATRE
 SANDY SPRINGS, GA - SEPTEMBER 2022

SCALE: 3/8" = 1'
 PG SIZE: ARCH D
 DWG NUMBER: 5 OF 6

MOTOR PLOT OVER STAGE



KEY TO INSTRUMENTATION

Martin MAC Encore Performance CLD

- High End SolaFrame Theatre
- High End SolaSpot 1000
- Robe BMFL Followspot
- CHAUVET R2 WASH
- ETC Source-4 10°
- S4-14° LED Tung
- ETC S4-19° LED Tungsten
- ETC S4-50° LED Tungsten
- Ovation E260 36°
- Ovation E260 36°
- ETC S4-14° LED Lustr
- ETC S4-19° LED Lustr
- ETC S4-36° LED Lustr
- ETC S4-50 LED Lustr
- ETC S4-70° LED Lustr-S2
- ETC ColorSource PAR-MR
- ETC ColorSource PAR
- ETC ColorSource Linear 4 Deep Blue
- GAM TwinSpin
- GAM Film Loop
- S4A Template Holder
- ETC S4-PAR (MFL)

LEGEND

ABBREVIATIONS:
 R = Rosco
 G = GAM
 A = Apollo
 LS = Line Set
 GP = Grand Plan
 LX = Electric
 TD = Tech. Direct.
 LD = Lighting Desgr.

FOCUS COLOR
 LENS
 TEMPLATE
 UNIT #
 ENGINE TYPE
 CHANNEL #



REVISION HISTORY

NO.	REVISION	DATE	BY
A01	SCENIC LAYOUT / DOC PREP	09 JULY 22	MTW
A02	PRELIM VP / PCB SHOP BID	12 AUG 22	MTW
A03	SCENIC UPDATES / SHOP	08 AUG 22	MTW
A04	REVISIONS	11 AUG 22	MTW
A05	ERROR FIXES / ADDED TEMPLATES	19 AUG 22	MTW
LD#10574	LOAD IN	27 AUG 22	MTW

ANYTHING GOES

PRODUCTION STAFF

DIRECTOR SARA EDWARDS
 SCENIC DESIGNER STEVEN K. MITCHELL
 LIGHTING DESIGNER MIKE WOOD
 ASSOC. PROGRAMMER DALTON HAMILTON
 ASST. LIGHTING DSGNR DIONTE MERCADO
 ASST. LIGHTING DSGNR TRULY CATES
 PROD. ELEC MATTHEW PIEDIE

THE BYERS THEATRE
 SANDY SPRINGS, GA - SEPTEMBER 2022

SCALE 3/16" = 1'
 UNLESS OTHERWISE NOTED

PG SIZE ARCH D

DWG NUMBER **6** OF 6

LX SECTION THRU CENTER