

KEY TO INSTRUMENTATION

	ETC High End Lonestar	5
	Chauvet Rogue R2X Spot	3
	Chauvet Rogue R1 Wash	4
	26° Prolights Eclipse	10
	36° Prolights Eclipse	18
	50° Prolights Eclipse	13
	COLORdash Par H12 IP	8
	ETC Vivid 11	5
	ETC S4 Junior 36°	14
	ETC S4-PARnel	7
	ETC S4-PAR (WFL)	2
	ChromaQ Chroma-Q	8

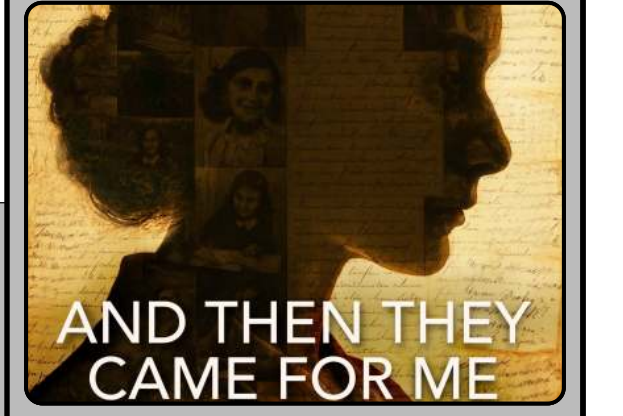
LEGEND

ABBREVIATIONS:
 R = Rocco
 G = GAM
 A = Apollo
 LS = Line Set
 GP = Ground Plan
 LE = Electric
 TD = Tech. Direct.
 LD = Lighting Diagram

FOCUS
 COLOR
 CLR

LENS
 TEMPLATE

UNIT #
 ENGINE TYPE
 CHANNEL #



MW LIGHTING LD# 10574
 www.mwlighting.com

REVISION HISTORY

NO.	REVISION	DATE	BY
1	PRELIMINARY	3/13/26	ER
2	REVISED	3/23/26	ER
3	REVISED	3/23/26	ER

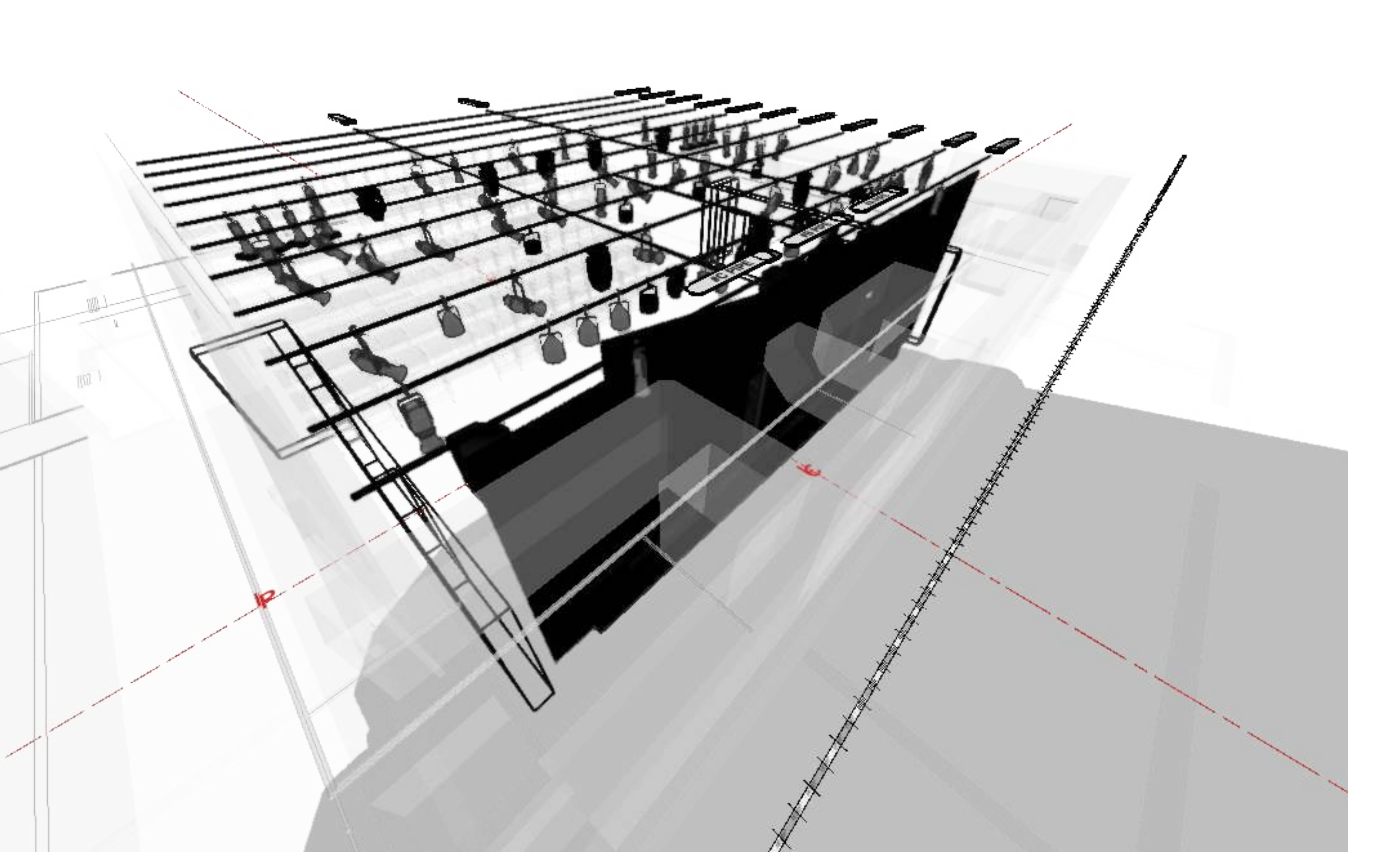
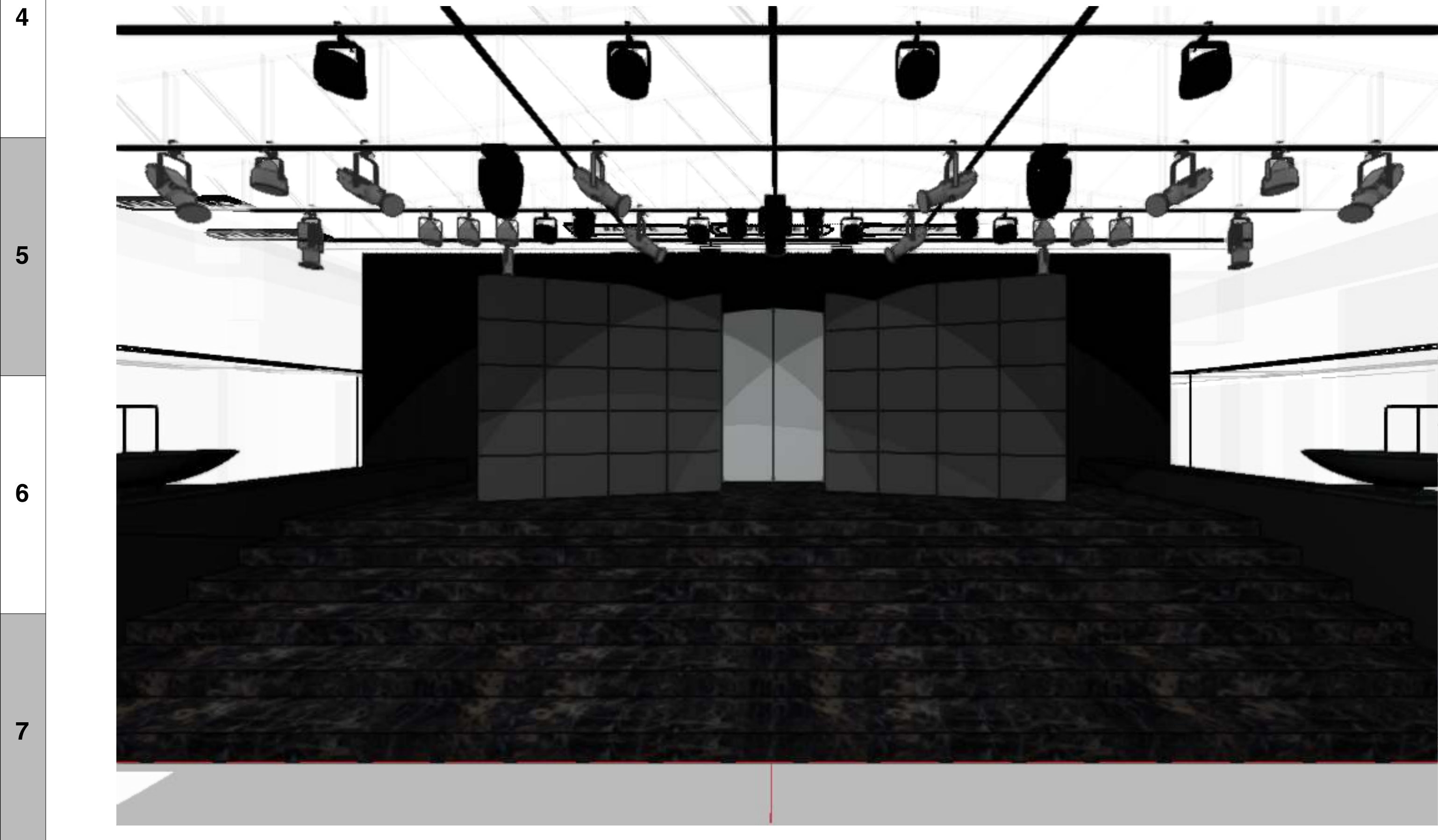
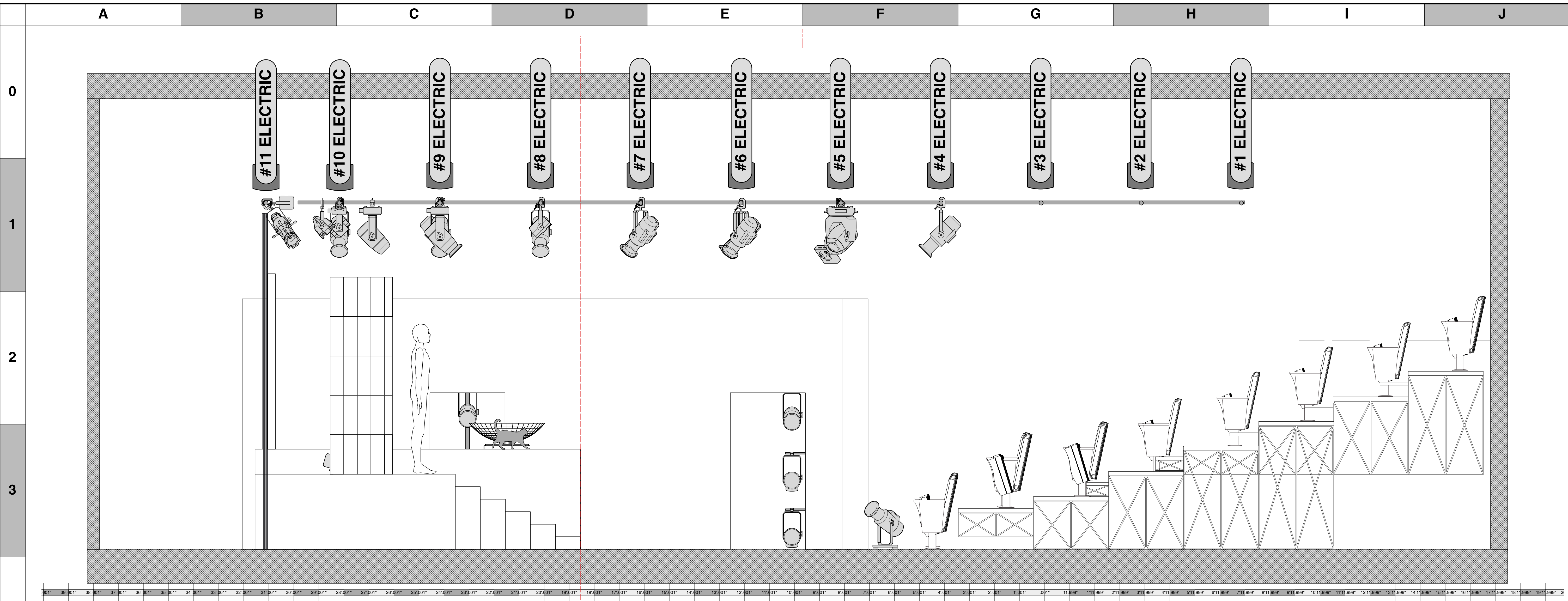
AND THEN THEY CAME FOR ME

PRODUCTION STAFF
 DIRECTOR: ERIC DAVIS
 LIGHTING DESIGNER: MIKE WOOD
 SCENIC DESIGNER: ERIC DAVIS
 PRODUCTION ELEC: TRENTEN SZABO

freeFall theatre company
 2024 - St. Petersburg, FL

SCALE 1/2" = 1'
 PG SIZE ARCH D
 DWG NUMBER **L01**
 OF 4

LIGHT PLOT - OVERHEAD
 OVERSTAGE HANG



KEY TO INSTRUMENTATION

	ETC High End Lonestar	5
	Chauvet Rogue R2X Spot	3
	Chauvet Rogue R1 Wash	4
	26° Prolights Eclipse	10
	36° Prolights Eclipse	18
	50° Prolights Eclipse	13
	COLORdash Par H12 IP	8
	ETC Vivid 11	5
	ETC S4 Junior 36°	14
	ETC S4-PARnel	7
	ETC S4-PAR (WFL)	2
	ChromaQ Chroma-Q	8

LEGEND

ABBREVIATIONS:
 R = Roco
 G = GAM
 A = Apollo
 LS = Line Set
 GP = Ground Plan
 LE = Electric
 TD = Tech. Direct.
 LD = Lighting Design

FOCUS CLR
 — FOC
 — CLR

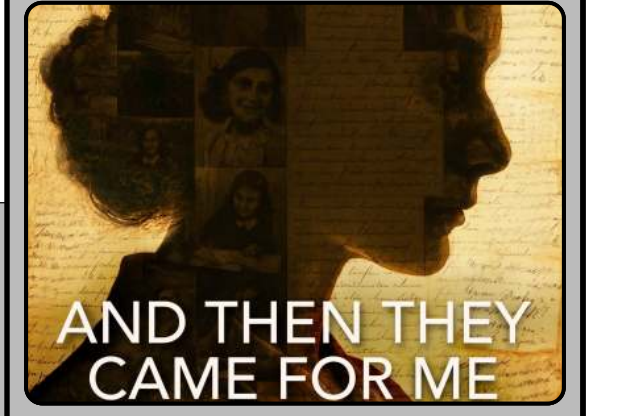
LENS
 — LENS

TEMPLATE
 — TEMPLATE

UNIT #
 — UNIT #

ENGINE TYPE
 — ENGINE TYPE

CHANNEL #
 — CHANNEL #



MW LIGHTING LD# 10574
www.mwlighting.com
 This lighting system is a design and construction system. The lighting design and construction are the responsibility of the user. The manufacturer is not responsible for any damage or injury resulting from the use of this system. The user must read and understand the instructions and safety warnings before using this system.

REVISION HISTORY

NO.	REVISION	DATE	BY
1	PRELIMINARY	3/1/24	ED
2	REVISED	3/15/24	ED
3	ADDED PANEL	3/28/24	ED

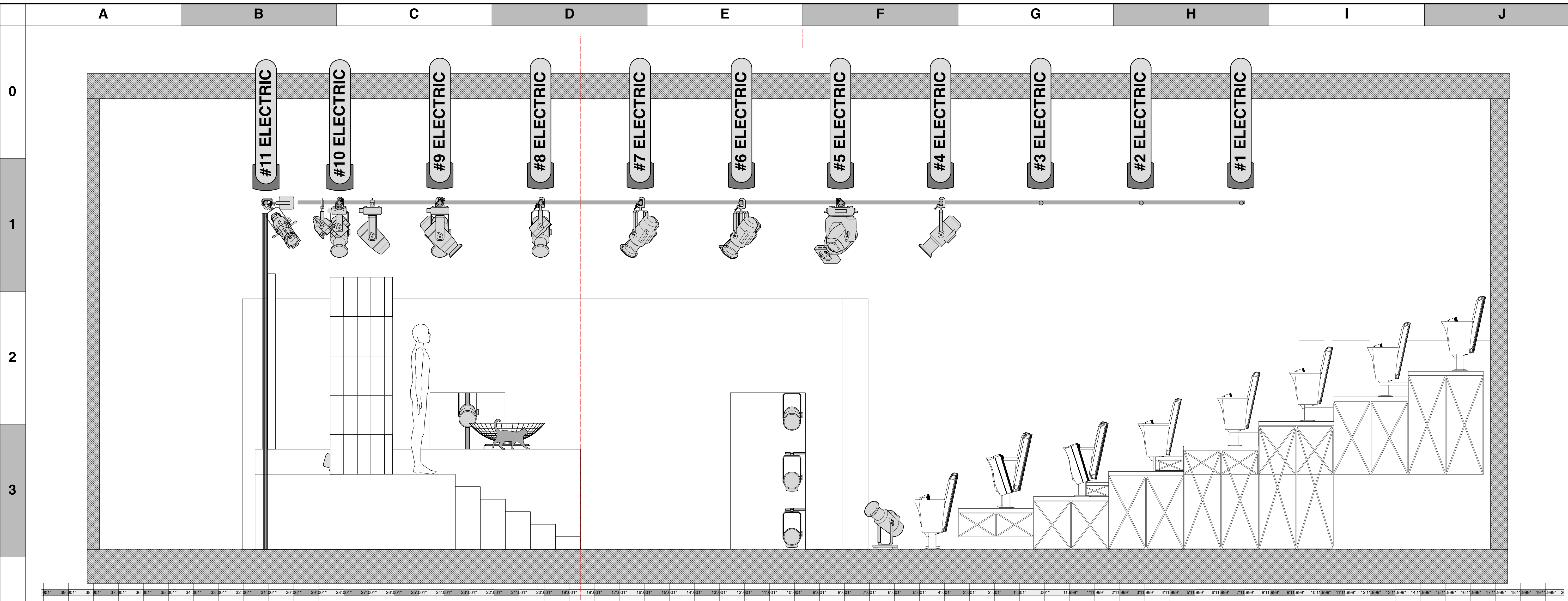
AND THEN THEY CAME FOR ME

PRODUCTION STAFF
 DIRECTOR: ERIC DAVIS
 LIGHTING DESIGNER: MIKE WOOD
 SCENIC DESIGNER: ERIC DAVIS
 PRODUCTION ELEC: TRENTEN SZABO

freeFall theatre company
 2024 - St. Petersburg, FL

SCALE 1/2" = 1'
 PG SIZE ARCH D
L03
 OF 4

LIGHT PLOT - SECTION
 @CL > SL



KEY TO INSTRUMENTATION

	ETC High End Lonestar	5
	Chauvet Rogue R2X Spot	3
	Chauvet Rogue R1 Wash	4
	26° Prolights Eclipse	10
	36° Prolights Eclipse	18
	50° Prolights Eclipse	13
	COLORdash Par H12 IP	8
	ETC Vivid 11	5
	ETC S4 Junior 36°	14
	ETC S4-PARnel	7
	ETC S4-PAR (WFL)	2
	ChromaQ Chroma-Q	8

LEGEND

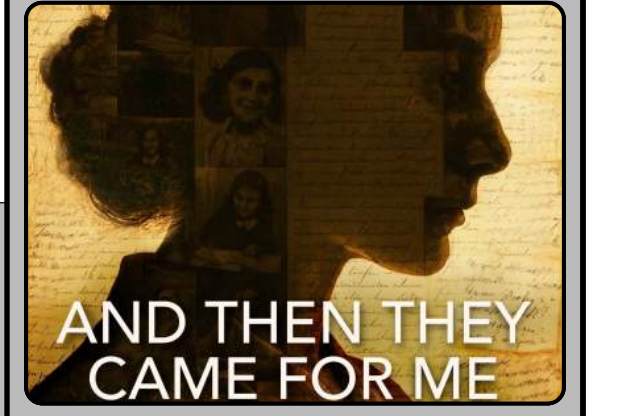
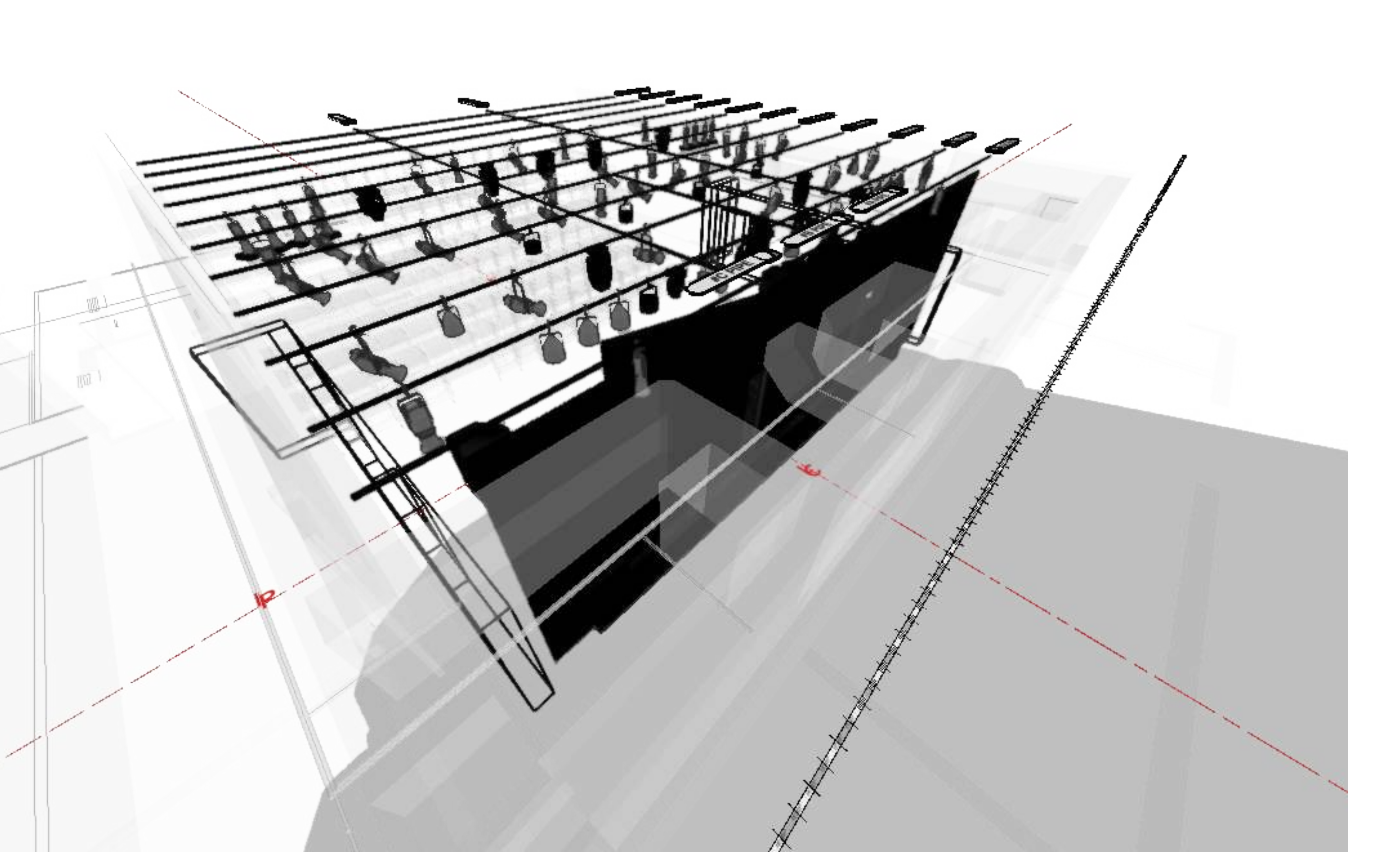
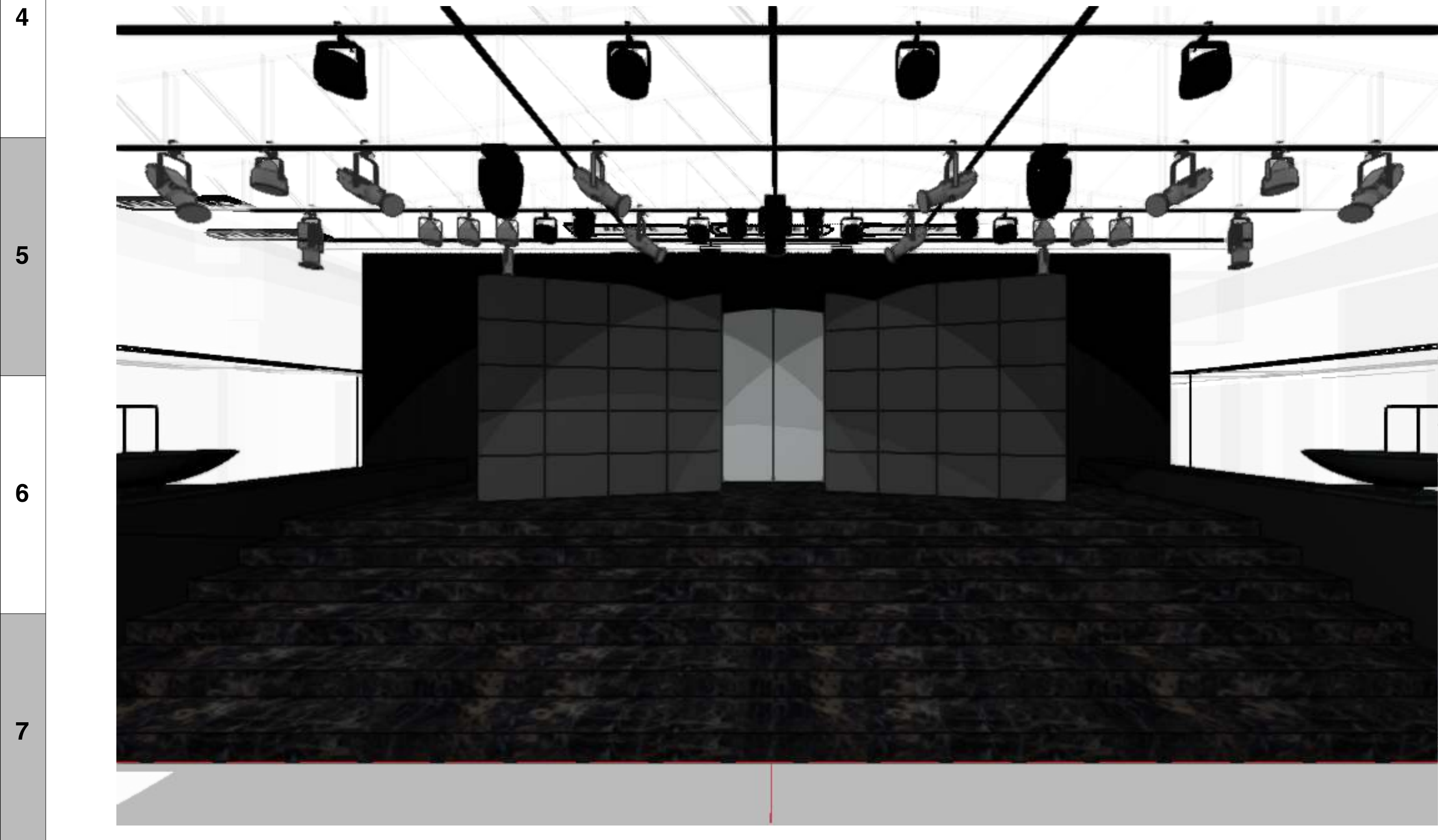
ABBREVIATIONS:
 R = Roco
 G = GAM
 A = Apollo
 LS = Line Set
 GP = Ground Plan
 LE = Electric
 TD = Tech. Direct.
 LD = Lighting Design

FOCUS CLR
 — FOC
 — CLR

LENS
 — LENS²
 — TEMPLATE

UNIT #
 — 5

ENGINE TYPE
 — CHANNEL #



MW LIGHTING LD# 10574
 www.mwlighting.com
 This lighting system is a design and construction system. The lighting design and construction are the responsibility of the user. The manufacturer is not responsible for any damage or injury to persons or property resulting from the use of this system. Always consult a qualified professional before using any lighting system.

REVISION HISTORY

NO.	REVISION	DATE	BY
1	PRELIMINARY	3/1/24	ER
2	REVISED	3/15/24	ER
3	ADD PANEL	3/28/24	ER

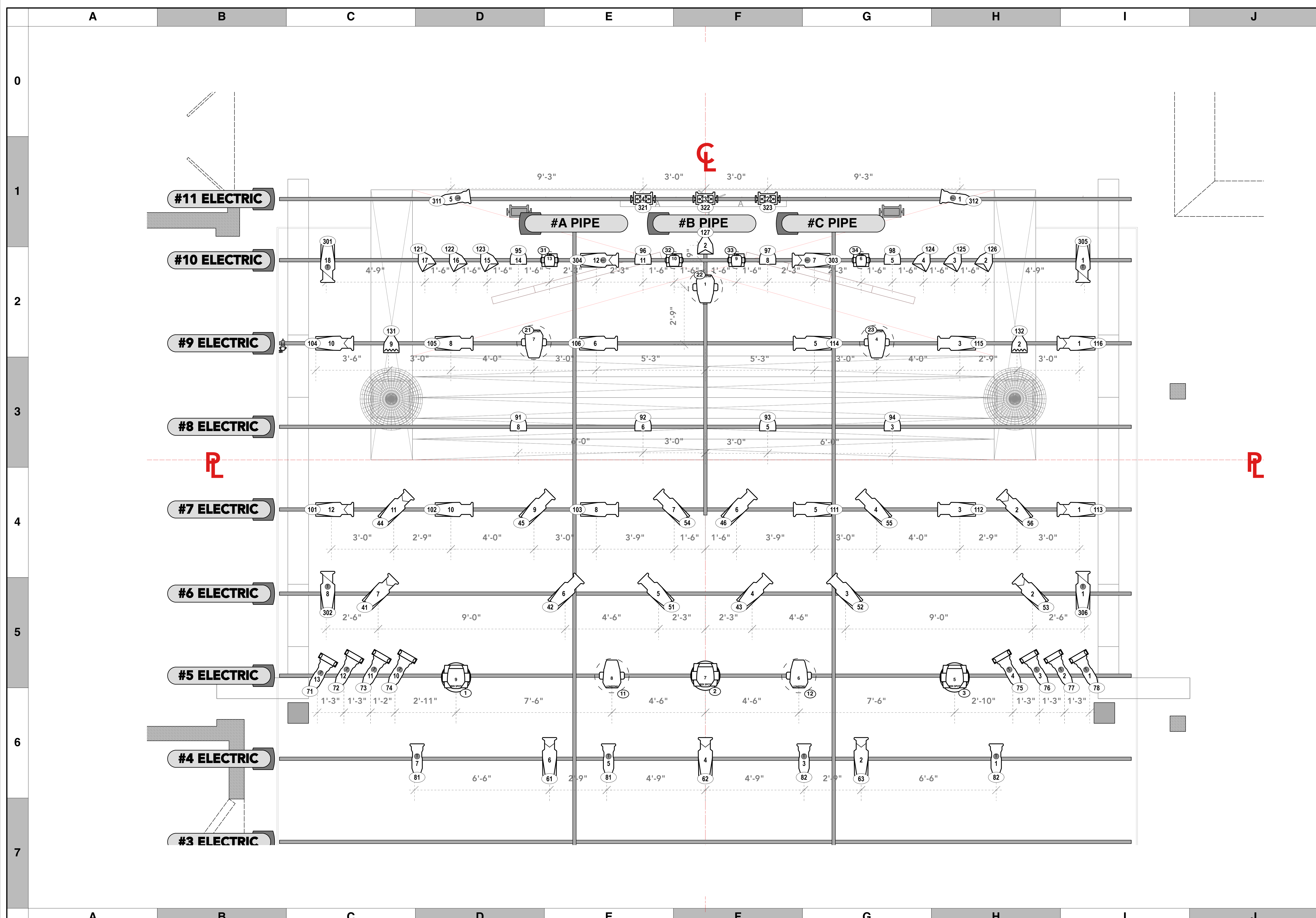
AND THEN THEY CAME FOR ME

PRODUCTION STAFF
 DIRECTOR: ERIC DAVIS
 LIGHTING DESIGNER: MIKE WOOD
 SCENIC DESIGNER: ERIC DAVIS
 PRODUCTION ELEC: TRENTEN SZABO

freeFall theatre company
 2024 - St. Petersburg, FL

SCALE 1/2" = 1'
 DWG NUMBER **L03**
 PG SIZE ARCH D OF 4

LIGHT PLOT - SECTION
 @CL > SL



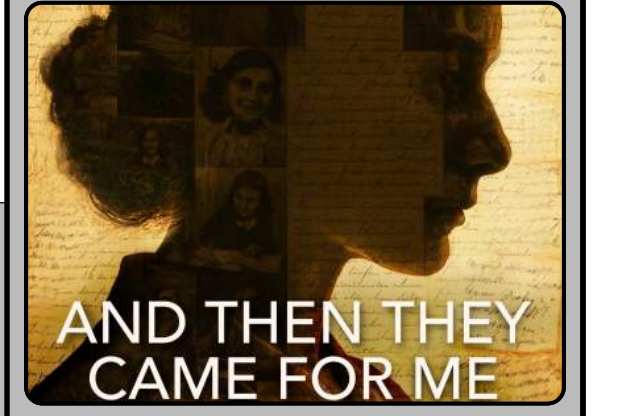
KEY TO INSTRUMENTATION

	ETC High End Lonestar	5
	Chauvet Rogue R2X Spot	3
	Chauvet Rogue R1 Wash	4
	26° Prolights Eclipse	10
	36° Prolights Eclipse	18
	50° Prolights Eclipse	13
	COLORdash Par H12 IP	8
	ETC Vivid 11	5
	ETC S4 Junior 36°	14
	ETC S4-PARnel	7
	ETC S4-PAR (WFL)	2
	ChromaQ Chroma-Q	8

LEGEND

ABBREVIATIONS: R = Rococo, G = GAM, A = Apollo, LS = Line Set, GP = Ground Plan, LE = Electric, TD = Tech. Direct, LD = Lighting Diagram

FOCUS CLR, COLOR CLR, LENS, TEMPLATE, UNIT #, ENGINE TYPE, CHANNEL #



MW LIGHTING LD# 10574

www.mwlighting.com

REVISION HISTORY

NO.	REVISION	DATE	BY
1	PRELIMINARY	3/13/26	ED
2	REVISED	3/23/26	ED
3	REVISED	3/23/26	ED

AND THEN THEY CAME FOR ME

PRODUCTION STAFF
 DIRECTOR: ERIC DAVIS
 LIGHTING DESIGNER: MIKE WOOD
 SCENIC DESIGNER: ERIC DAVIS
 PRODUCTION ELEC: TRENTEN SZABO

freeFall theatre company
 2024 - St. Petersburg, FL

SCALE 1/2" = 1'
 PG SIZE ARCH D
 DWG NUMBER **L01**
 OF 4

LIGHT PLOT - OVERHEAD
 OVERSTAGE HANG

